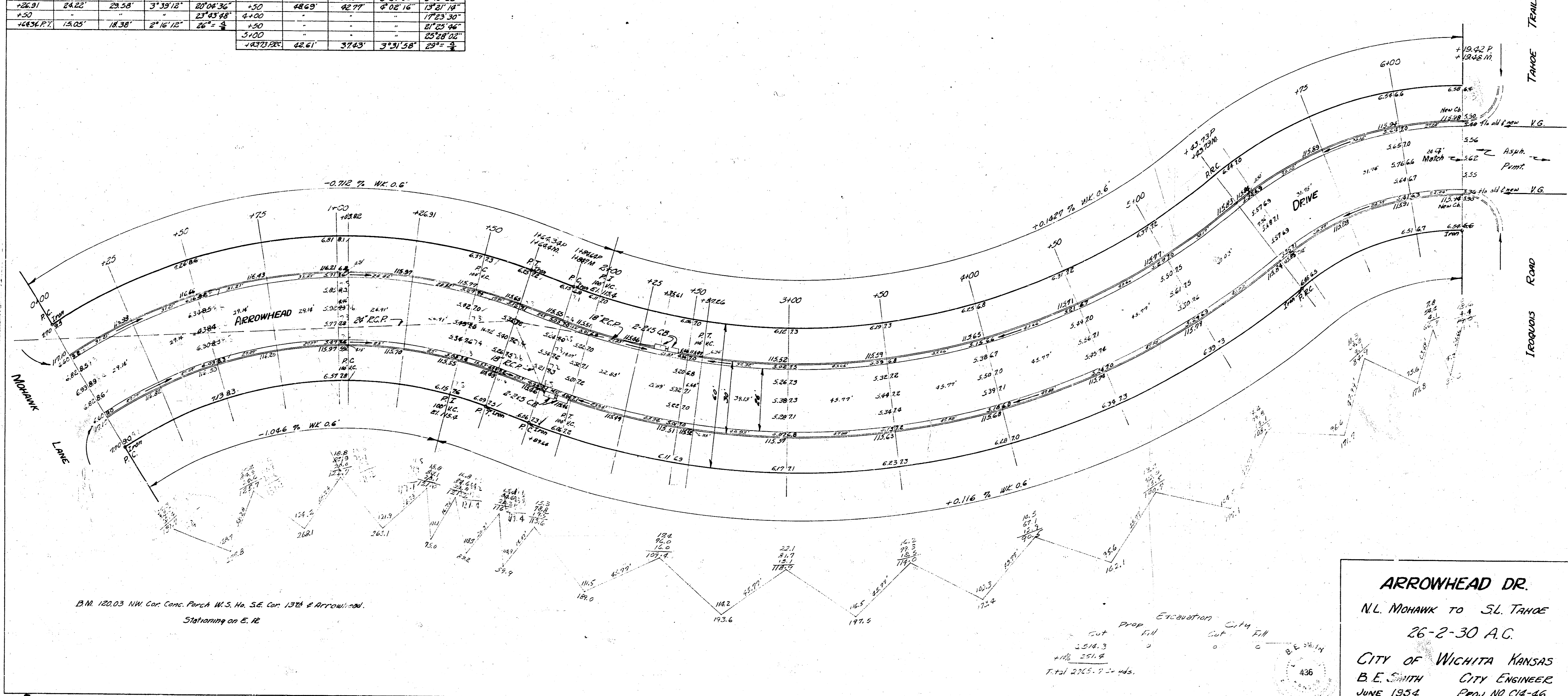
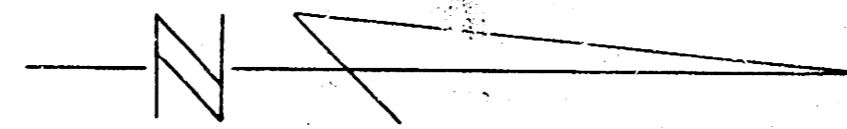


Curve Data for P.C. to P.T. on E. of S. 34.543213 N 61° 20' 00" W R=220.0'					Curve Data for P.C. to P.T. on E. of S. 34.543213 N 61° 20' 00" W R=220.0'					Curve Data for P.C. to P.T. on E. of S. 34.543213 N 61° 20' 00" W R=220.0'				
Sta	Dist from P.C.	Dist from P.T.	Dist from P.C.	Dist from P.T.	Sta	Dist from P.C.	Dist from P.T.	Dist from P.C.	Dist from P.T.	Sta	Dist from P.C.	Dist from P.T.	Dist from P.C.	Dist from P.T.
0+00	0.00	220.00	0.00	220.00	0+00	0.00	220.00	0.00	220.00	0+00	0.00	220.00	0.00	220.00
+25	26.22'	193.78'	31.57'	188.43'	+25	26.22'	193.78'	31.57'	188.43'	+25	26.22'	193.78'	31.57'	188.43'
+50	52.44'	167.56'	63.14'	163.08'	+50	52.44'	167.56'	63.14'	163.08'	+50	52.44'	167.56'	63.14'	163.08'
+75	78.66'	141.34'	94.71'	158.73'	+75	78.66'	141.34'	94.71'	158.73'	+75	78.66'	141.34'	94.71'	158.73'
+100	104.88'	115.12'	126.28'	154.38'	+100	104.88'	115.12'	126.28'	154.38'	+100	104.88'	115.12'	126.28'	154.38'
+125	131.10'	88.90'	157.85'	150.03'	+125	131.10'	88.90'	157.85'	150.03'	+125	131.10'	88.90'	157.85'	150.03'
+150	157.32'	62.68'	189.42'	145.68'	+150	157.32'	62.68'	189.42'	145.68'	+150	157.32'	62.68'	189.42'	145.68'
+175	183.54'	36.46'	220.99'	141.33'	+175	183.54'	36.46'	220.99'	141.33'	+175	183.54'	36.46'	220.99'	141.33'
+200	209.76'	10.24'	252.56'	136.98'	+200	209.76'	10.24'	252.56'	136.98'	+200	209.76'	10.24'	252.56'	136.98'
+220	220.00'	0.00'	220.00'	136.98'	+220	220.00'	0.00'	220.00'	136.98'	+220	220.00'	0.00'	220.00'	136.98'



B.M. 182.03 NW Cor. Conc. Par. W.S. No. SE. Cor. 1374 & Arrowhead.  
 Stationing on E. R.

Station	Cut	Prop	Fill	Equation	Cut	Fill
1+00	2.54	0.00	0.00		0.00	0.00
1+25	2.54	0.00	0.00		0.00	0.00
1+50	2.54	0.00	0.00		0.00	0.00
1+75	2.54	0.00	0.00		0.00	0.00
2+00	2.54	0.00	0.00		0.00	0.00

**ARROWHEAD DR.**  
 N.L. MOHAWK TO S.L. TANOE  
 26-2-30 A.C.  
 CITY OF WICHITA KANSAS  
 B.E. SMITH  
 CITY ENGINEER  
 JUNE 1954  
 PROJ. NO. C14-46

436