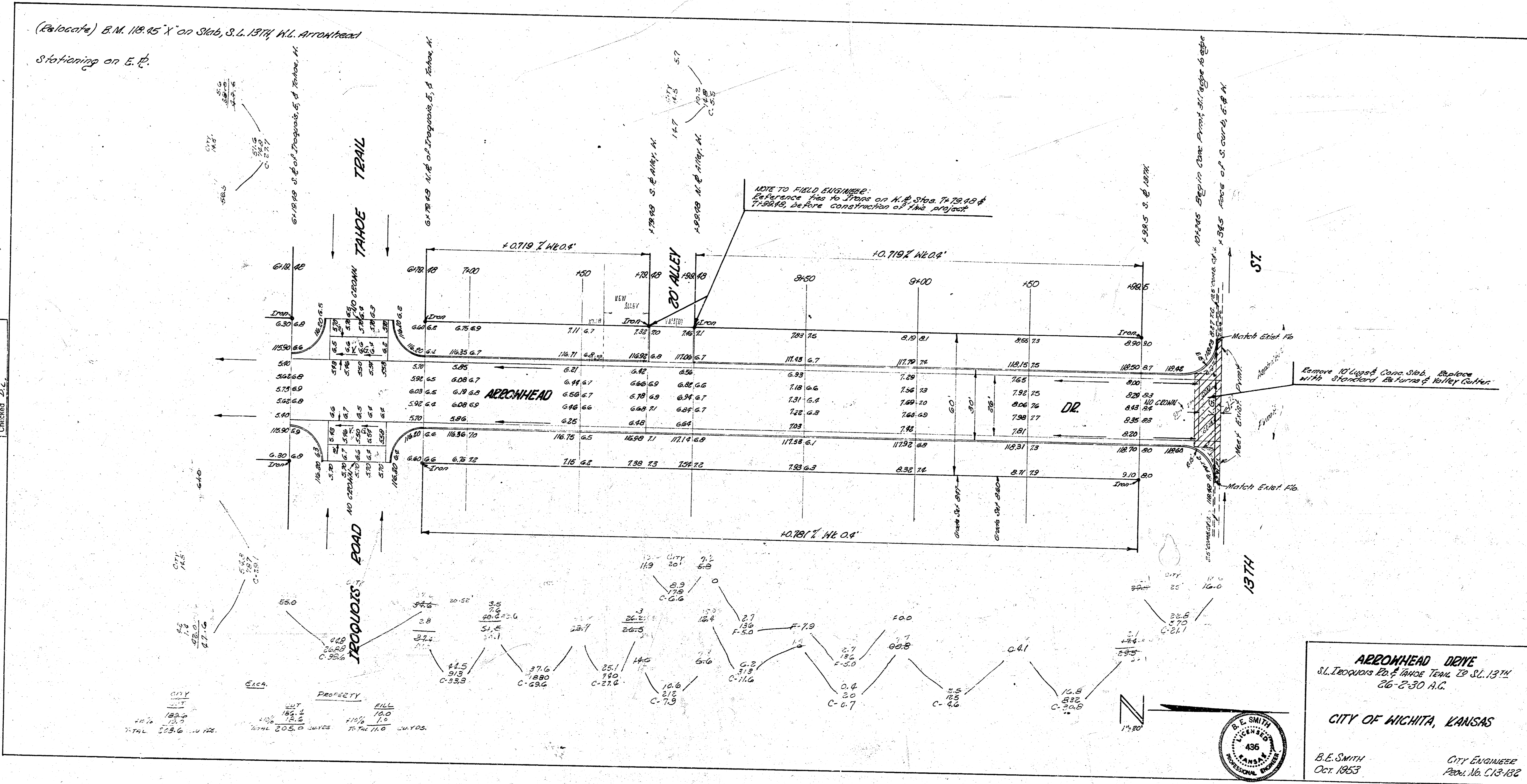


(Relocate) B.M. 116.85' X on Slab, S.L. 137th W.G. Arrowhead
 Stationing on E.P.

Survey Booklet BK 47
 Plan 18
 Checked by D.L.



ARROWHEAD DRIVE
 S.L. 137th W.G. of Arrowhead Trench, S.L. 137th
 26-2-30 A.C.
CITY OF WICHITA, KANSAS
 B.E. SMITH
 Oct. 1953
 CITY ENGINEER
 Proj. No. C13-122

