

SIGNALIZED IMPROVEMENTS

TO

29TH STREET NORTH

FROM MIDON AVE. TO ARKANSAS AVE.

SIGNALIZED MID-BLOCK PEDESTRIAN CROSSING

ON 29TH ST. BETWEEN HOOD AND SALINA

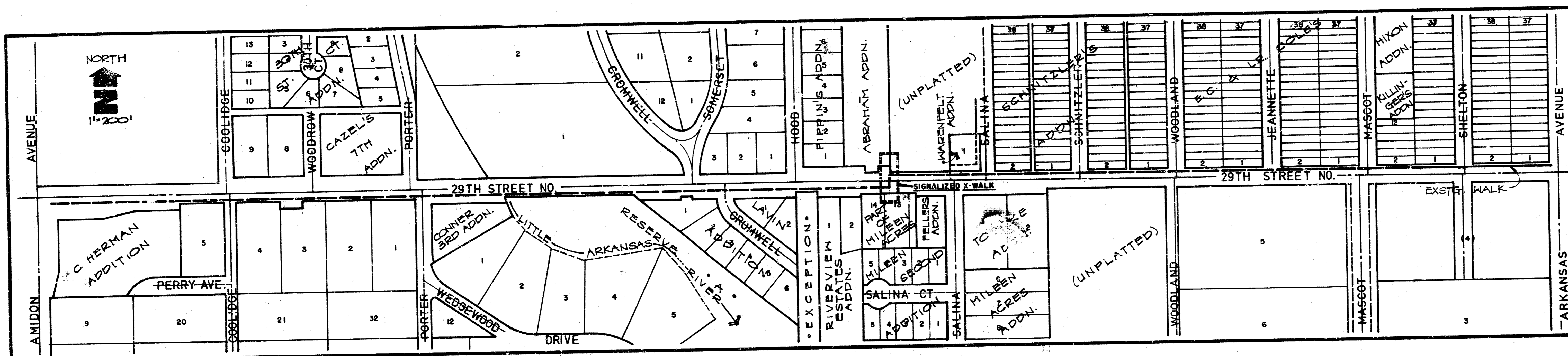
PROJECT NUMBER

472-76-245-81905-000-000-001

INDEX CODE 608133

CITY OF WICHITA, KANSAS

MICHAEL E. LINDEBAK
CITY ENGINEER



BENCHMARKS

1. City Plat 44.5' S. and 40.8' W. of centerlines 29th St. N. and Midon; elevation 127.22.
2. Chiseled square cut in top of curb W. side Coplidge on N. side 25'h. sta 6+45; elev. 127.85.
3. R.R. spike in P.P. (e. side) sta. 13+22, 25.8' ft. of section line; elev. 127.44.
4. City Plat 44' N. and 32' E. of centerlines 29th St. N. and Hood; elevation 128.91.
5. R.R. spike in P.P. (n. side) sta. 34+70, 1.18 at ft. of section line; elevation 127.86.
6. R.R. spike in P.P. (n. side) sta. 41+05, 26.5' ft. of section line; elevation 127.86.
7. R.R. spike in S.L.P. (n. side) sta 46+05.5, 15.1' ft. of section line; elevation 132.24.

GENERAL NOTES

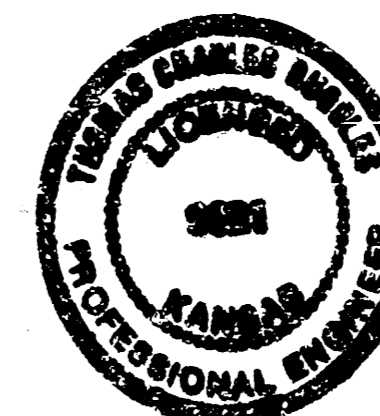
1. Interurban traffic generated outside the project area and local business or apartment traffic generated within the project area are to be carried through construction as further promulgated by project special provisions.
2. Utility service lines, poles, valve boxes, meters, and etcetera are to be adjusted as necessary by others prior to construction unless the plans specifically call for their adjustment by the Contractor or unless the plans specifically identify a utility to be adjusted by its owner during construction. Existing utilities and their location, as shown on the plans, represent the best information obtainable for design. The contractor will be required to work around existing utilities within the right-of-way which do not conflict with proposed construction.
3. Rubble from the removal of miscellaneous structures and excess excavation which is to be wasted shall be disposed of on sites to be provided by the Contractor. These sites shall be approved by the Engineer as to suitability, appearance and site location. Locations that, in the opinion of the Engineer, will leave an unsightly appearance will not be approved.
4. Properties within the project limits may have underground sprinkler systems in public right-of-way which conflict with new construction. Contractor will be required to remove such improvements should they not be removed by their owner at the time of construction of the project. The Contractor will be required to salvage all sprinkler heads and/or valves and give such material to their owner. Portions of underground sprinkler systems not in conflict with new construction shall be protected from damage and shall remain in place. All work in connection with underground sprinkler systems shall be considered as subsidiary to the contract pay items of work.
5. Mailboxes within the limits of the project shall be removed and replaced by the Contractor as approved by the Engineer. Contractor will be required to make satisfactory provisions for mail delivery to properties affected by this project during its construction.
6. Trees and shrubs in public right-of-way which are in direct conflict with proposed new construction shall be removed by the Contractor with the Engineer's approval. Trees and shrubs which are not in direct conflict with proposed new construction shall be saved and protected from damage.
7. The Contractor shall be responsible for preserving property irons. The Contractor will be required to re-establish any property irons which are damaged or destroyed by his construction operations. Such irons shall be re-established by a licensed land surveyor in accordance with state laws.
8. Removal of existing concrete parking lot pavements, asphalt parking lot pavements, asphalt driveway pavements and/or asphalt sidewalk pavements will be paid for as square feet of walk and drive removed.
9. Construction of asphalt parking lot pavement shall be paid for at the unit price bid per square yard of 6" asphalt parking lot construction (4" bituminous base).
10. Construction of concrete parking lot pavement will be paid as square feet of drive for the thickness indicated.
11. The Contractor shall give all property owners and/or tenants of developed property abutting the project limits a minimum of ten (10) days advance notice prior to start of construction. All sidewalk to be constructed with this project shall be 4" thick, except where noted otherwise on the plans.
12. All grassed areas disturbed by construction operations shall be fertilized and seeded, using Rebel fescue seed. Pitch slopes which are seeded shall be mulched. All such work shall be per standard City of Wichita specifications.
13. Offset distances left and right indicated on the plans are from section line (centerline 29th Street North).

INDEX of SHEETS

- 1..... TITLE SHEET
- 2..... TYPICAL SECTIONS & DETAILS
- 3-11..... SIDEWALK PLANS
- 12..... SIGNALIZED CROSSING PLAN SHEET

REVISIONS: 5/14/80 SH-T-7.12.12 31 JULY 80

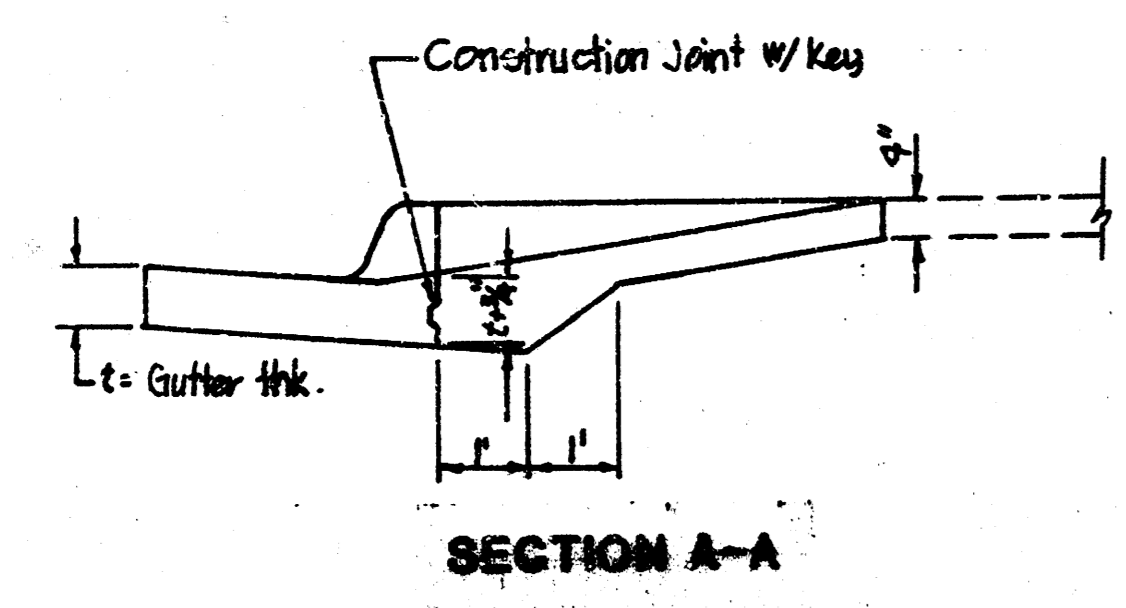
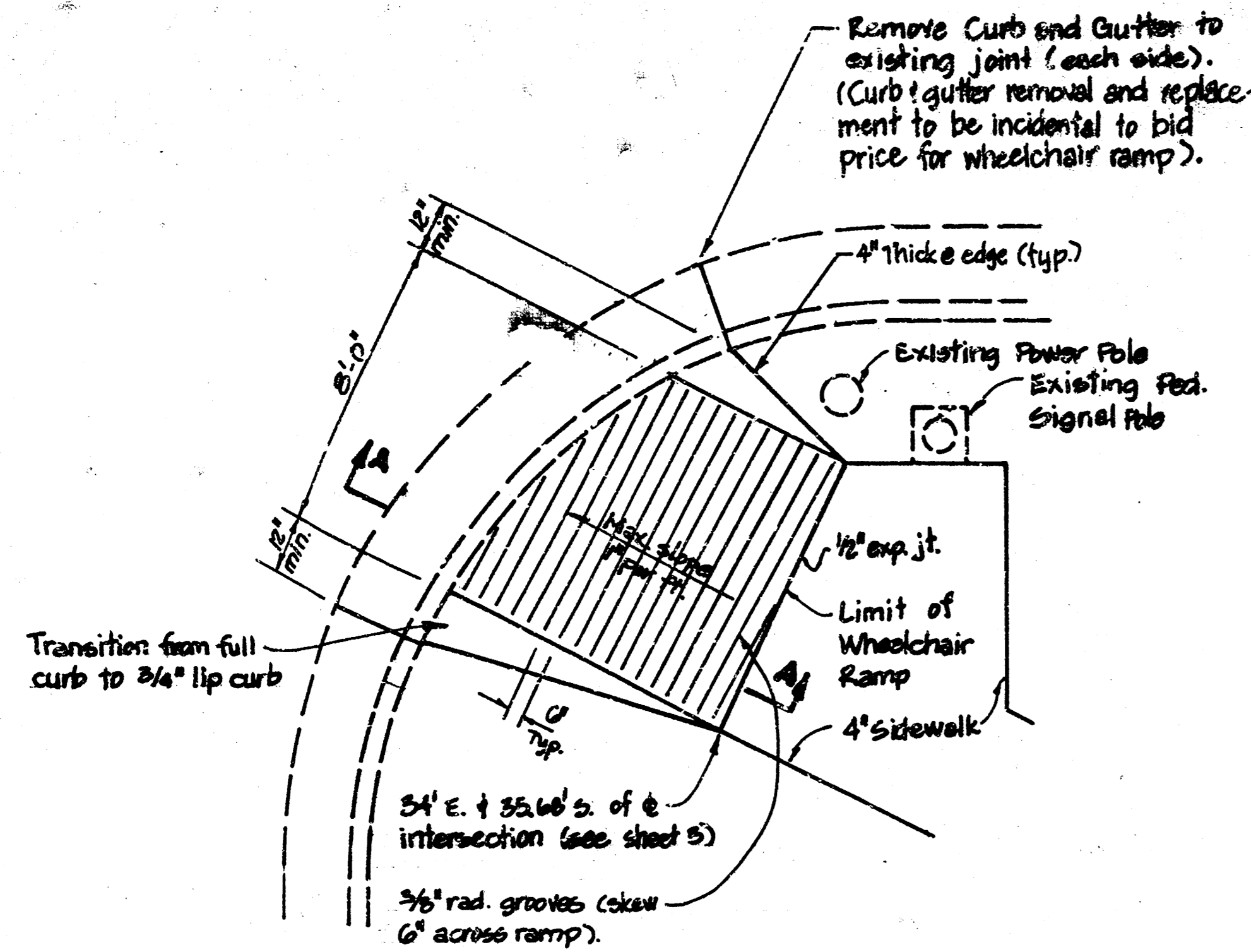
JULY 13, 1980



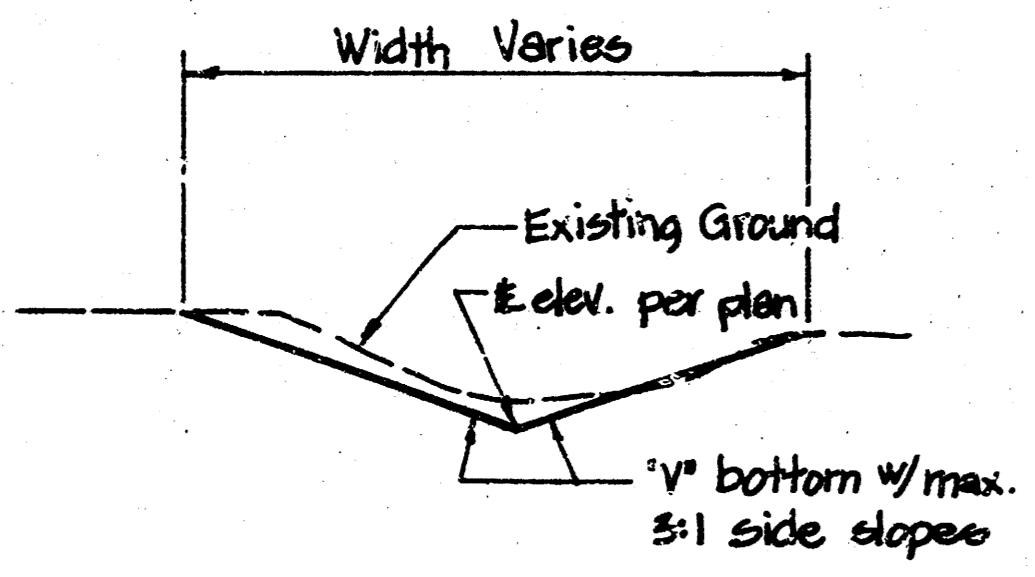
TITLE SHEET	
BAUGHMAN COMPANY, P.A. SURVEYING & ENGINEERING 312022-7271 • 215 ELLIS • WICHITA, KANSAS 67211	
Scale: TCR	Notes: PLUGS, NEW, JUN 80, NOTED
Sheet: 1	Total: 12

FILMED FROM THE BEST AVAILABLE COPY

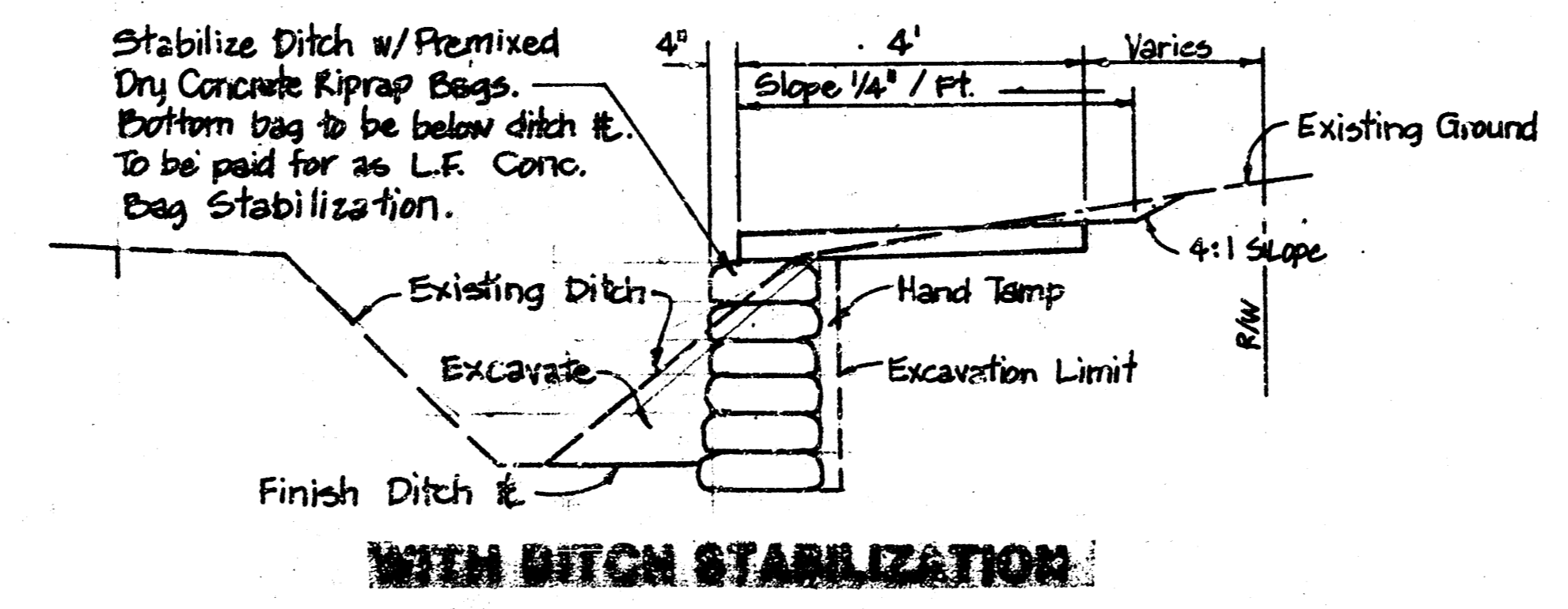
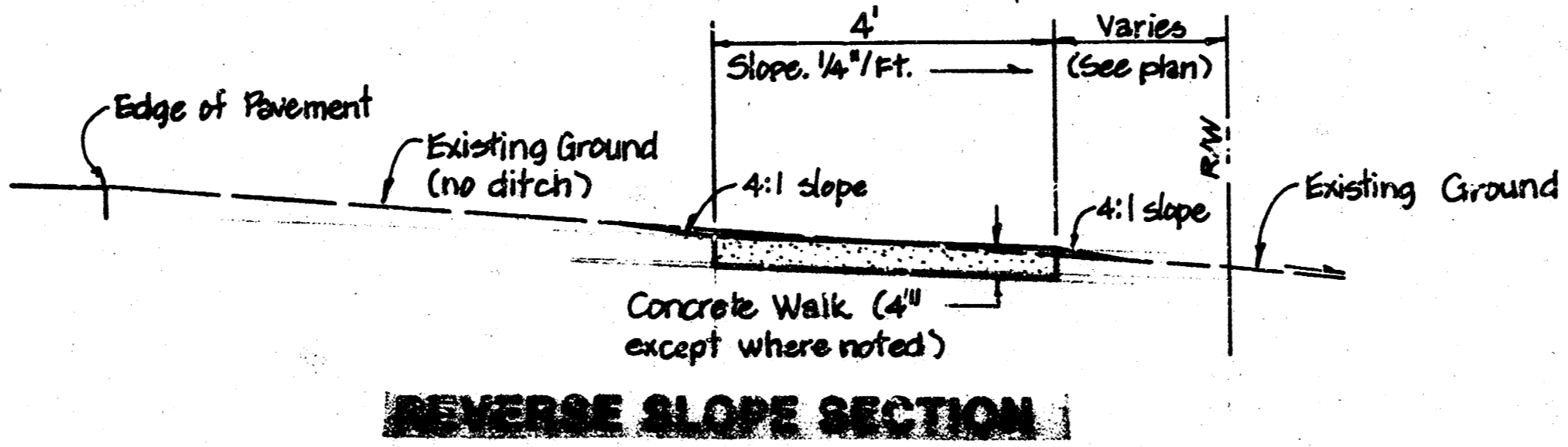
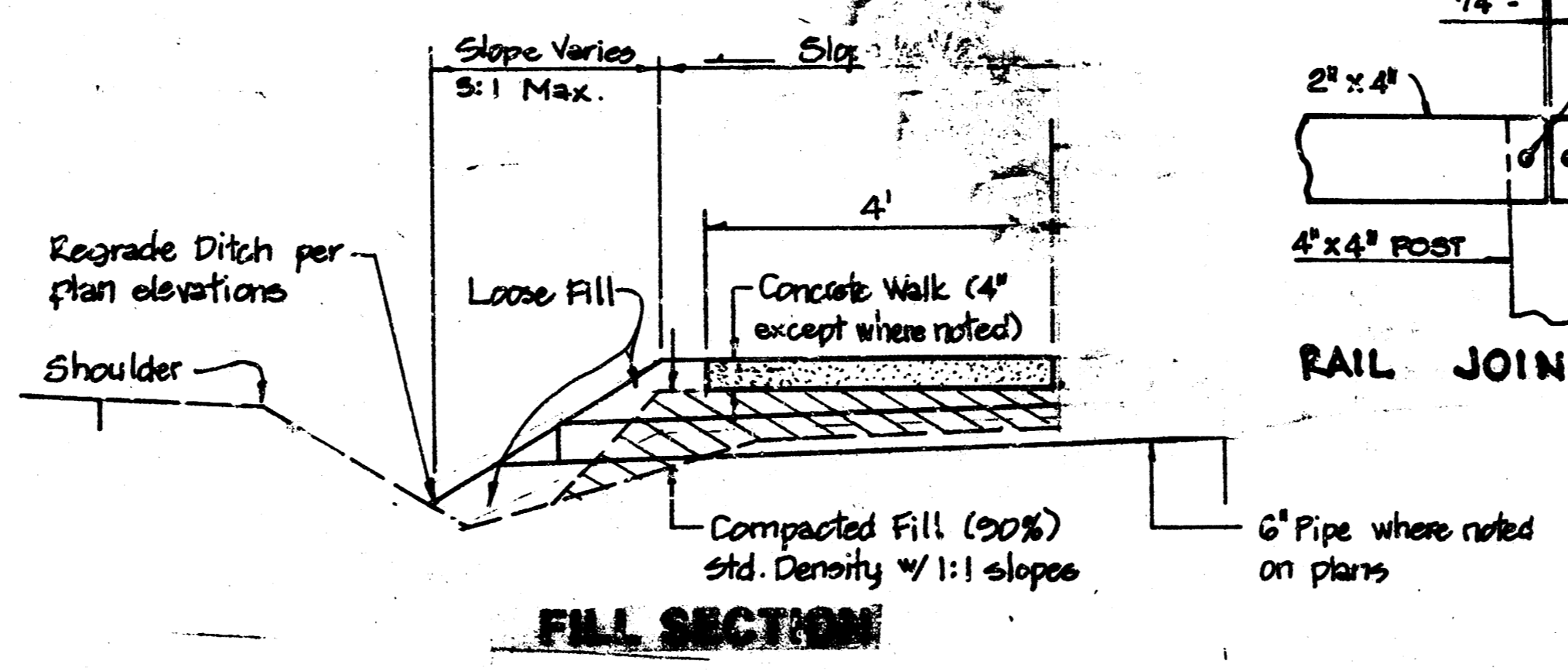
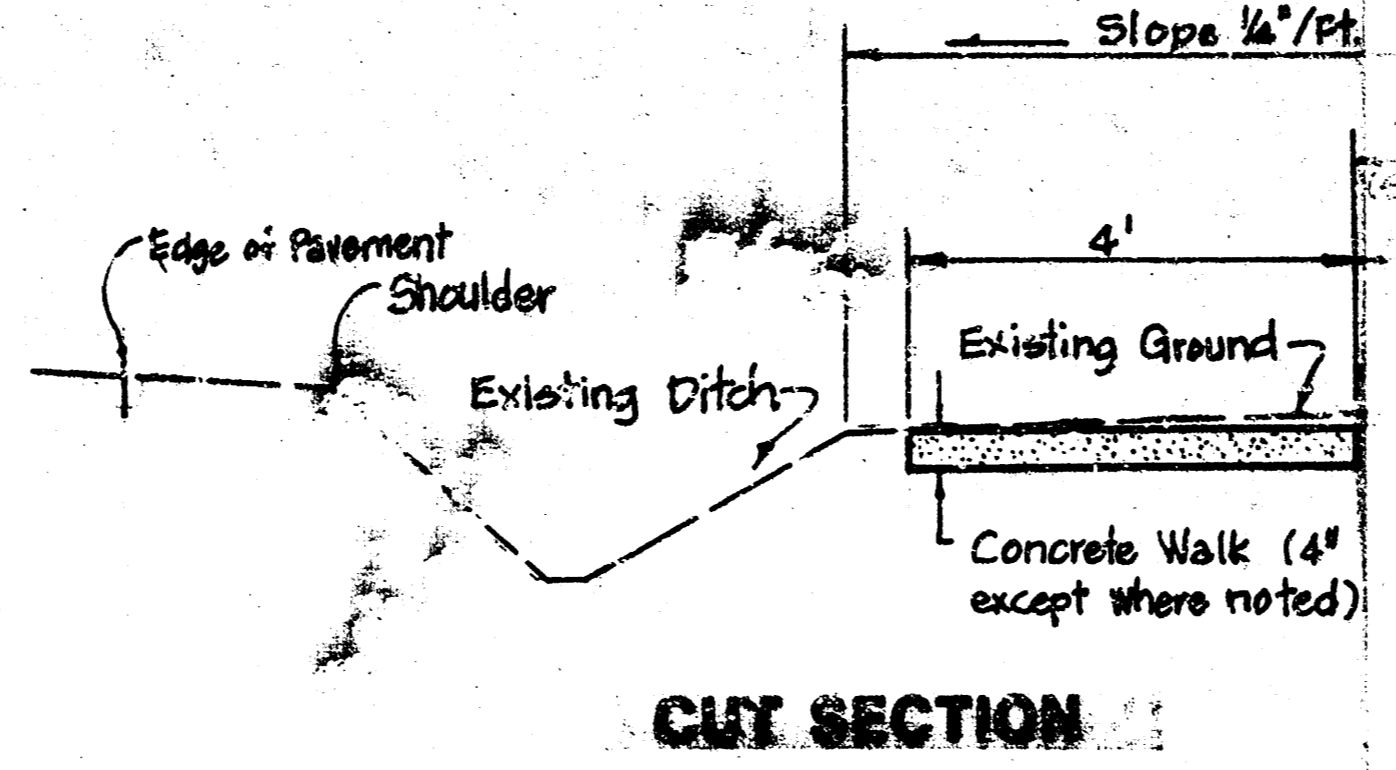
**29TH ST. BRIDGE ACROSS LITTLE ARKANSAS RIVER
WOOD PEDESTRIAN RAIL
DETAILS**



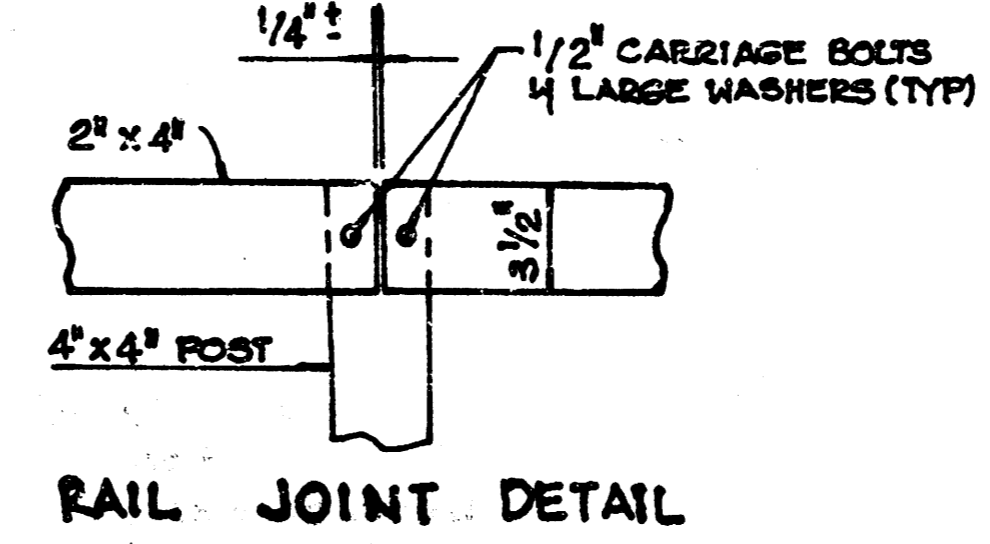
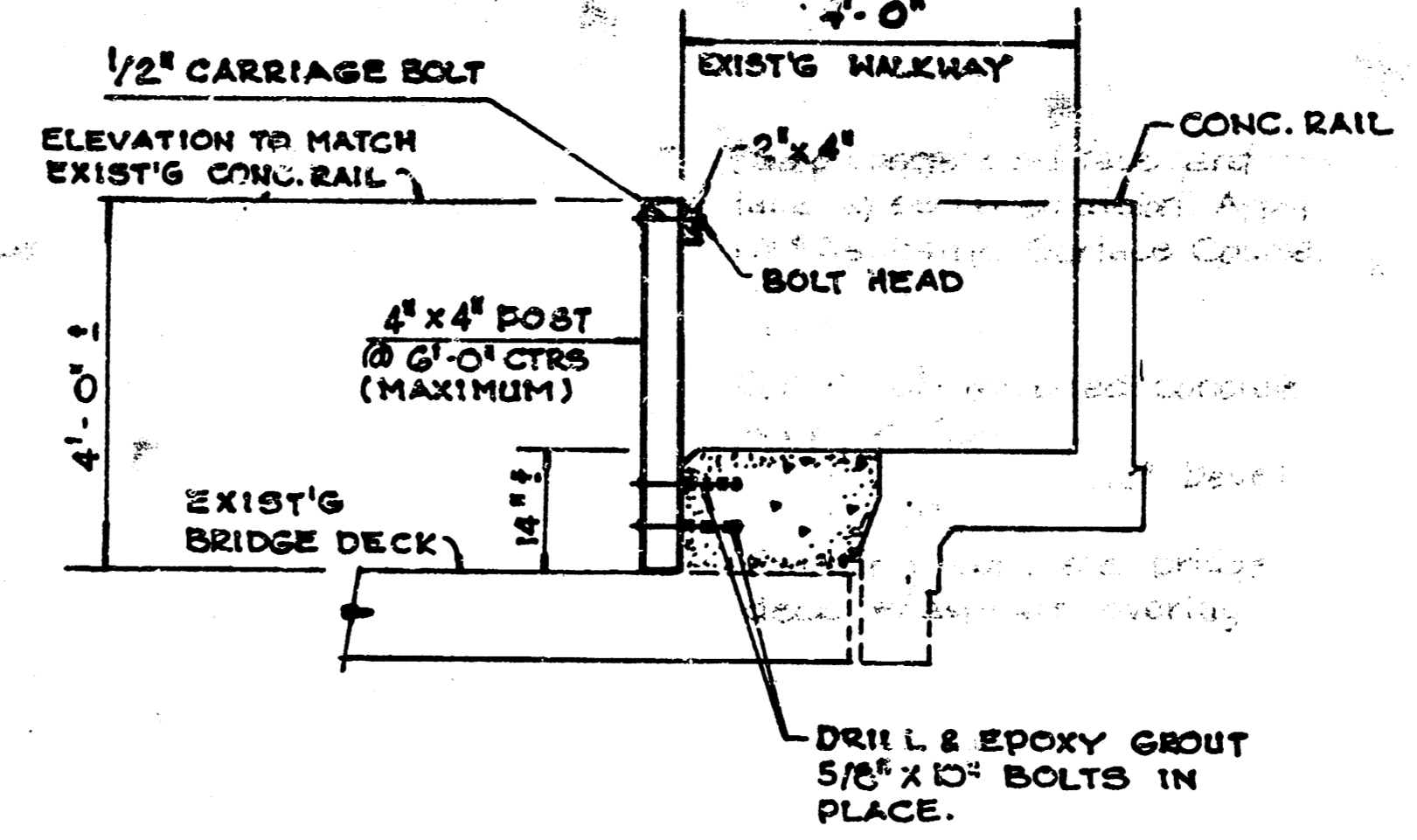
WHEELCHAIR RAMP DETAIL



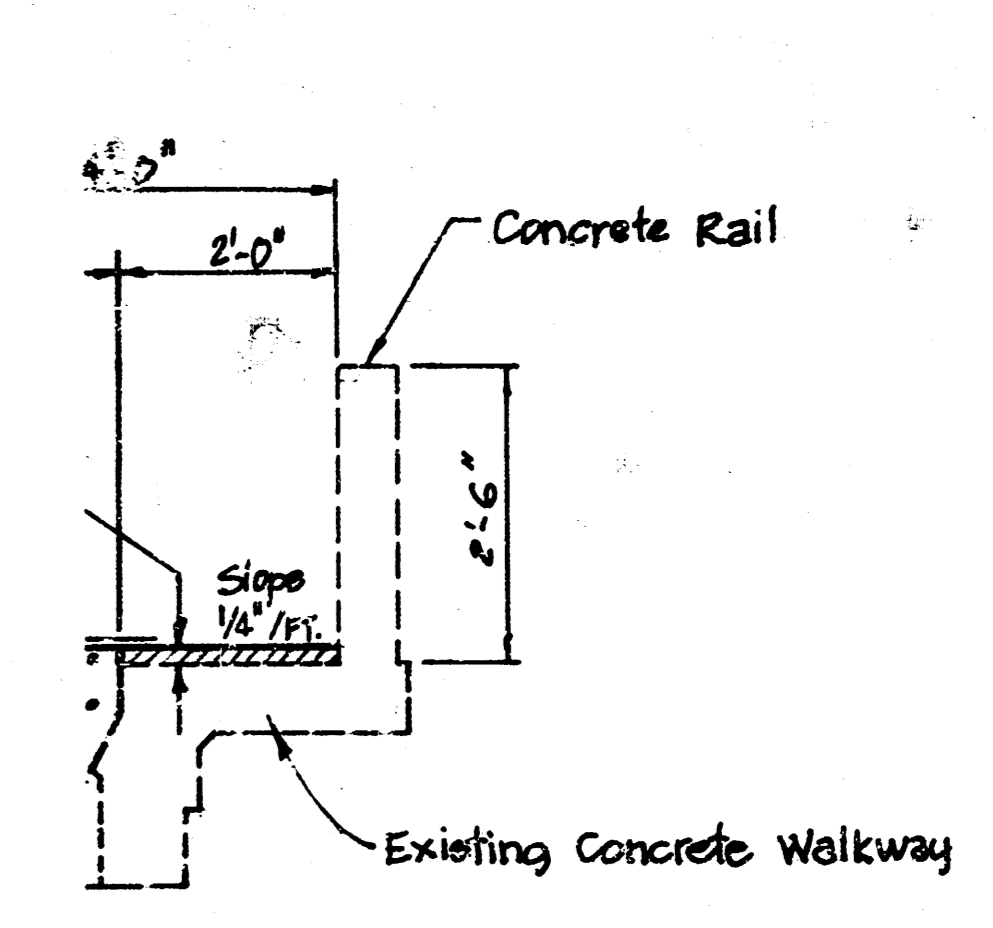
TYPICAL DITCH SECTION



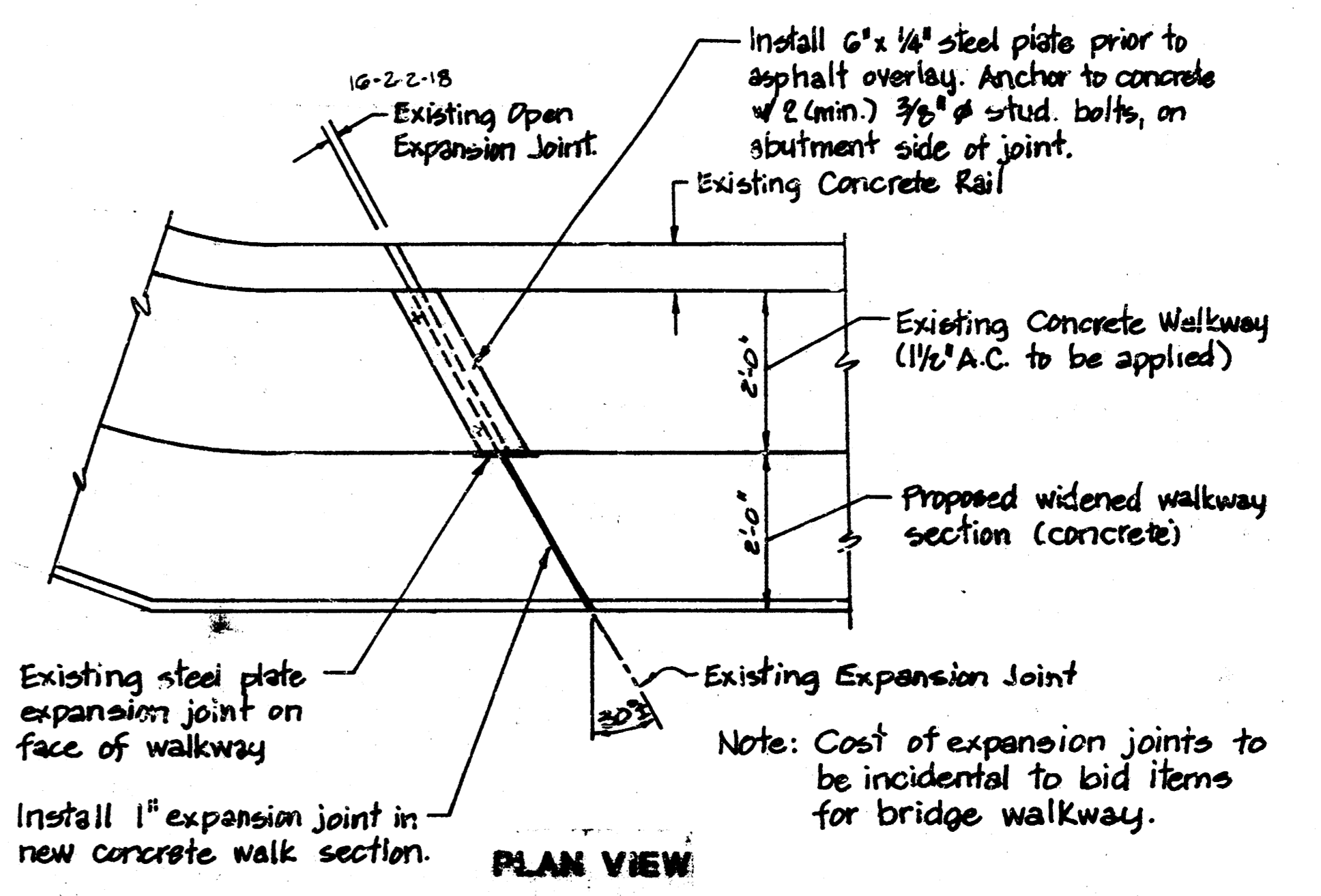
TYPICAL SIDEWALK SYSTEMS



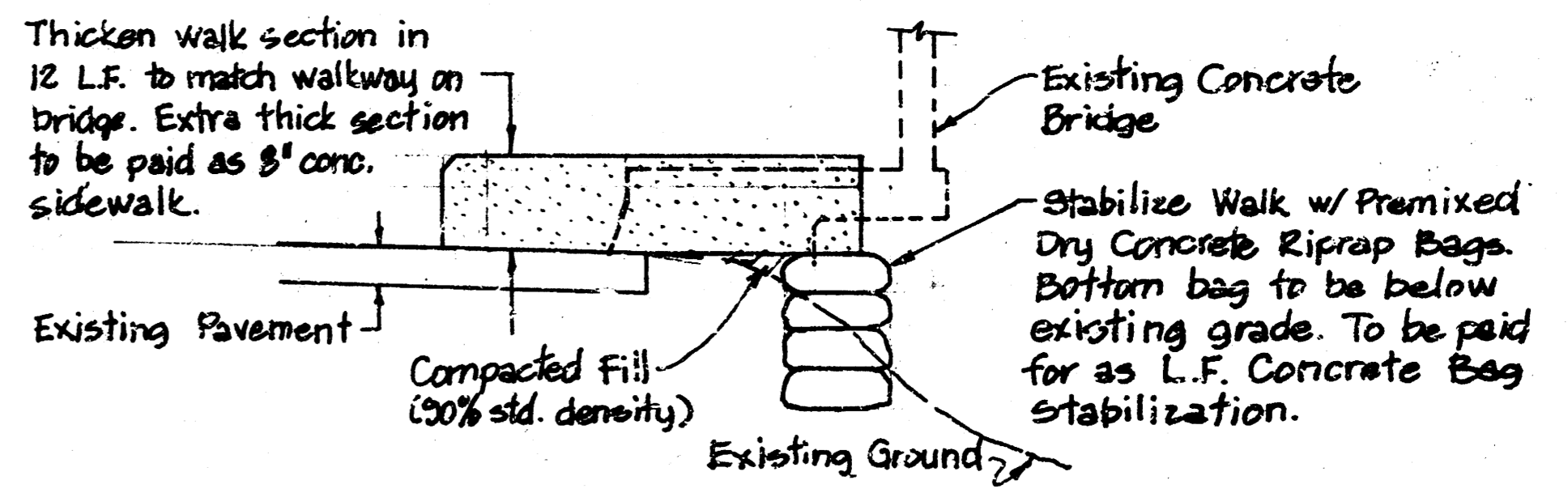
NOTE: TIMBERS TO BE SOUTHERN YELLOW PINE OR APPROVED EQUAL, 40 CCA TREATED AND SURFACED TIMBERS. ALL NUTS, BOLTS AND WASHERS TO BE GALVANIZED.



DETAIL



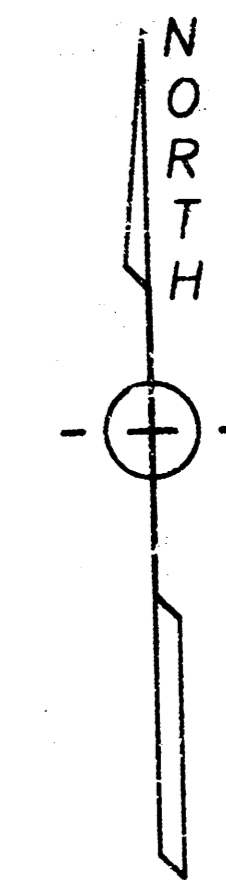
WALKWAY EXPANSION JOINT AT BRIDGE ABUTMENT



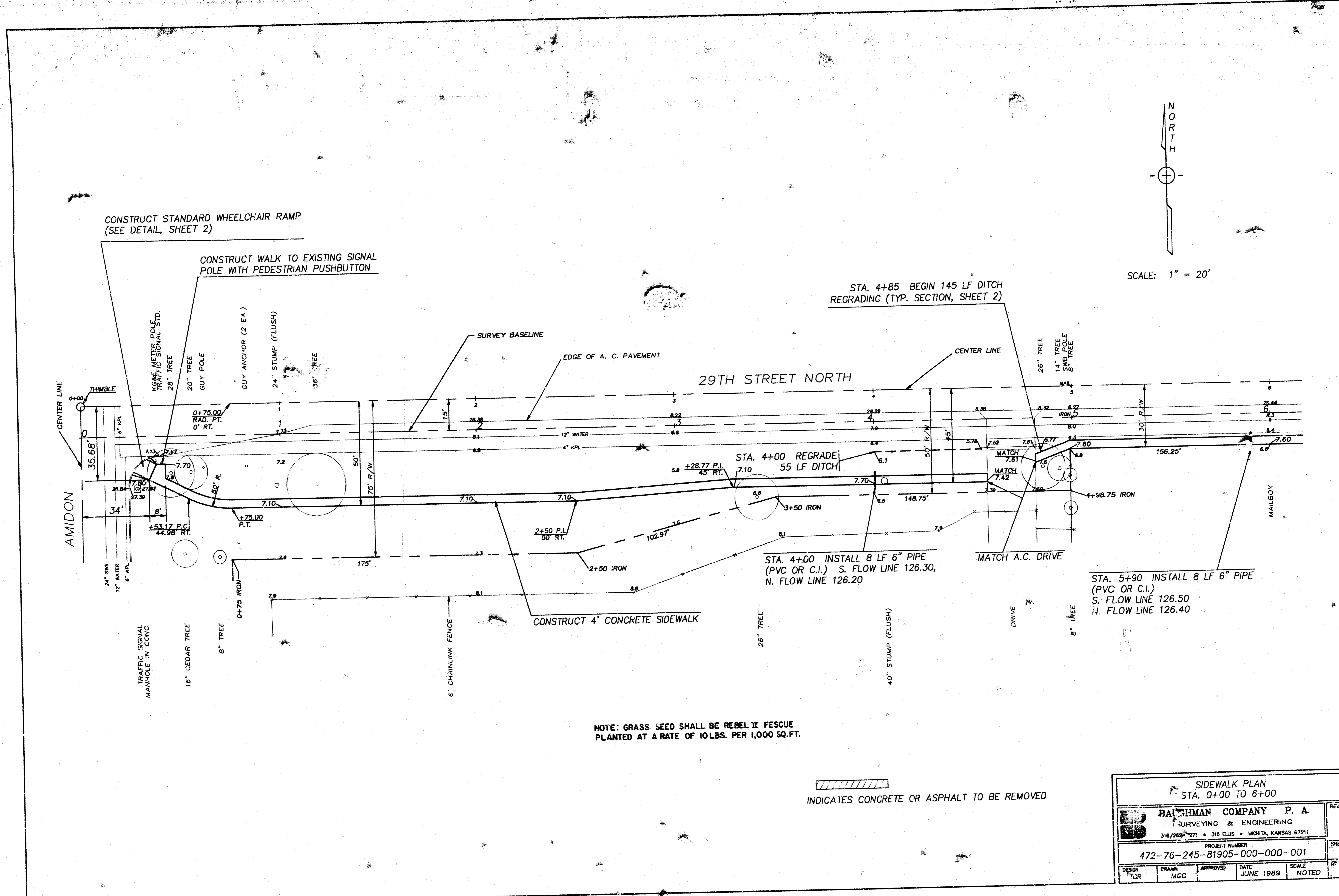
WALK STABILIZATION AT BRIDGE APPROACH

TYPICAL SECTIONS AND DETAILS					
29th STREET W. SIDEWALK					
BAUGHMAN COMPANY P. A. SURVEYING & ENGINEERING 315/282-7271 • 315 ELLIS • WICHITA, KANSAS 67211					REV.
PROJECT NUMBER 473-28-002-31601-000-000-001					SHEET 2
DESIGN TCR	DRAWN TCR	APPROVED	DATE JULY 1989	SCALE NONE	OF 12

FILMED FROM THE BEST AVAILABLE COPY

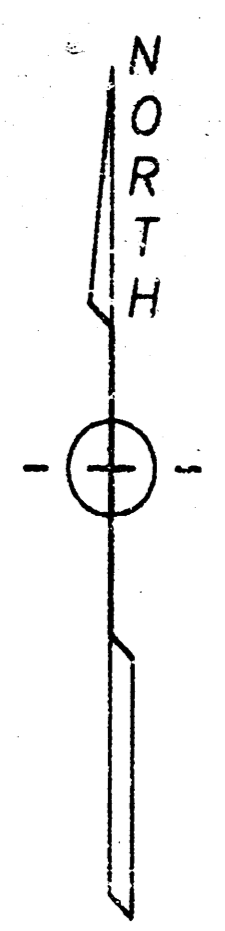


SCALE: 1" = 20'

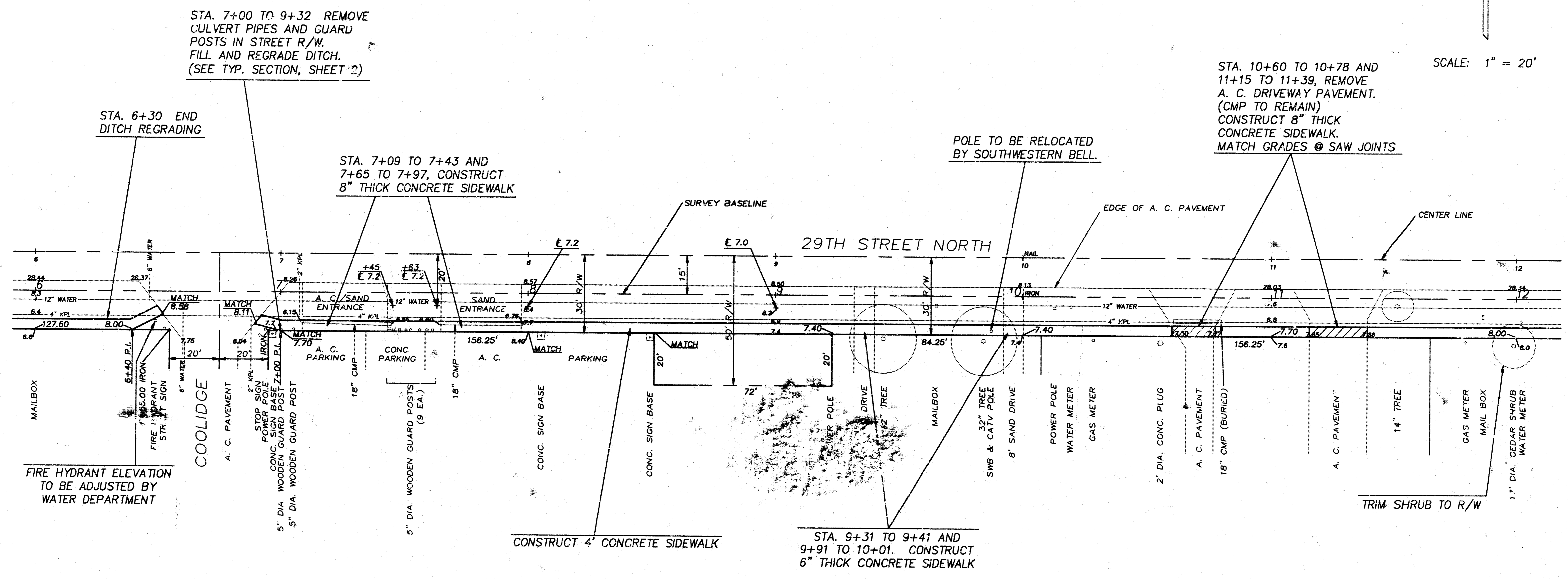


SIDEWALK PLAN STA. 0+00 TO 6+00				
BALTHMAN COMPANY P. A. SURVEYING & ENGINEERING 316/282-271 • 315 ELLIS • WICHITA, KANSAS 67211				
PROJECT NUMBER 472-76-245-81905-000-001				
DESIGN TCR	DRAWN MGC	APPROVED	DATE JUNE 1989	SCALE NOTED
				REV. SHEET 3 OF 12

FILMED FROM THE BEST AVAILABLE COPY



SCALE: 1" = 20'

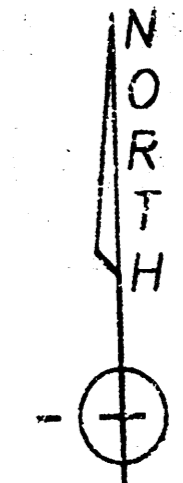


FIRE HYDRANT ELEVATION TO BE ADJUSTED BY WATER DEPARTMENT

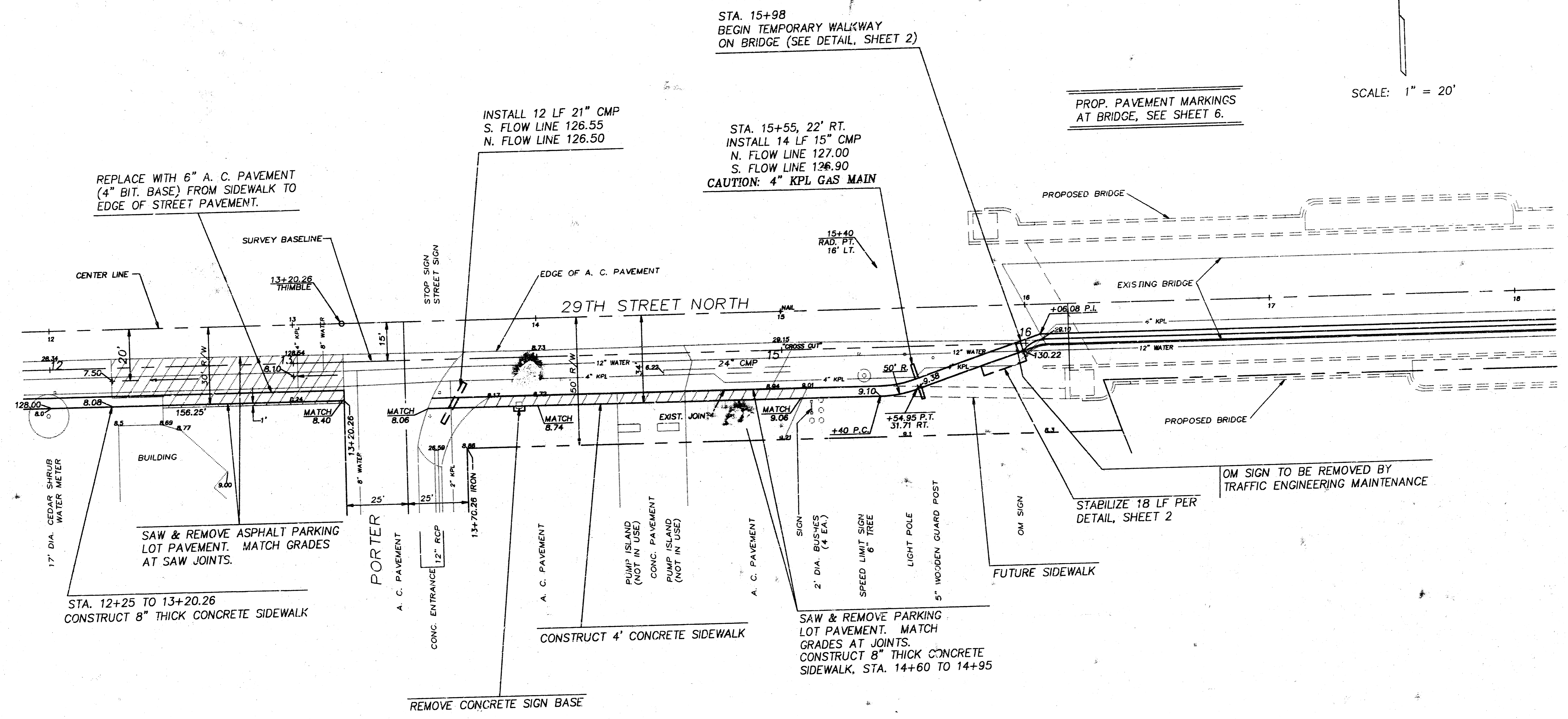
CONSTRUCT 4\"/>

SIDEWALK PLAN STA. 6+00 TO 12+00				
BAUGHMAN COMPANY P. A. SURVEYING & ENGINEERING 316/282-7271 • 315 ELLIS • WICHITA, KANSAS 67211				REV.
PROJECT NUMBER 472-76-245-81905-000-000-001				SHEET 4
DESIGN TWP	DR. W/M MGC	APPROVED	DATE JUNE 1999	SCALE NOTED

FILMED FROM THE BEST AVAILABLE COPY



SCALE: 1" = 20'



STA. 15+98
BEGIN TEMPORARY WALKWAY
ON BRIDGE (SEE DETAIL, SHEET 2)

PROP. PAVEMENT MARKINGS
AT BRIDGE, SEE SHEET 6.

STA. 15+55, 22' RT.
INSTALL 14 LF 15" CMP
N. FLOW LINE 127.00
S. FLOW LINE 126.90
CAUTION: 4" KPL GAS MAIN

INSTALL 12 LF 21" CMP
S. FLOW LINE 126.55
N. FLOW LINE 126.50

REPLACE WITH 6" A. C. PAVEMENT
(4" BIT. BASE) FROM SIDEWALK TO
EDGE OF STREET PAVEMENT.

STA. 12+25 TO 13+20.26
CONSTRUCT 8" THICK CONCRETE SIDEWALK

SAW & REMOVE ASPHALT PARKING
LOT PAVEMENT. MATCH GRADES
AT SAW JOINTS.

SAW & REMOVE PARKING
LOT PAVEMENT. MATCH
GRADES AT JOINTS.
CONSTRUCT 8" THICK CONCRETE
SIDEWALK, STA. 14+60 TO 14+95

CONSTRUCT 4' CONCRETE SIDEWALK

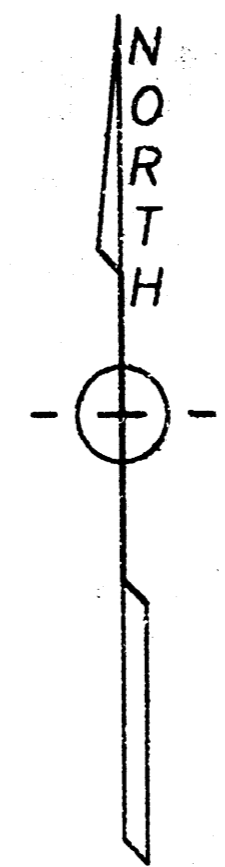
REMOVE CONCRETE SIGN BASE

OM SIGN TO BE REMOVED BY
TRAFFIC ENGINEERING MAINTENANCE

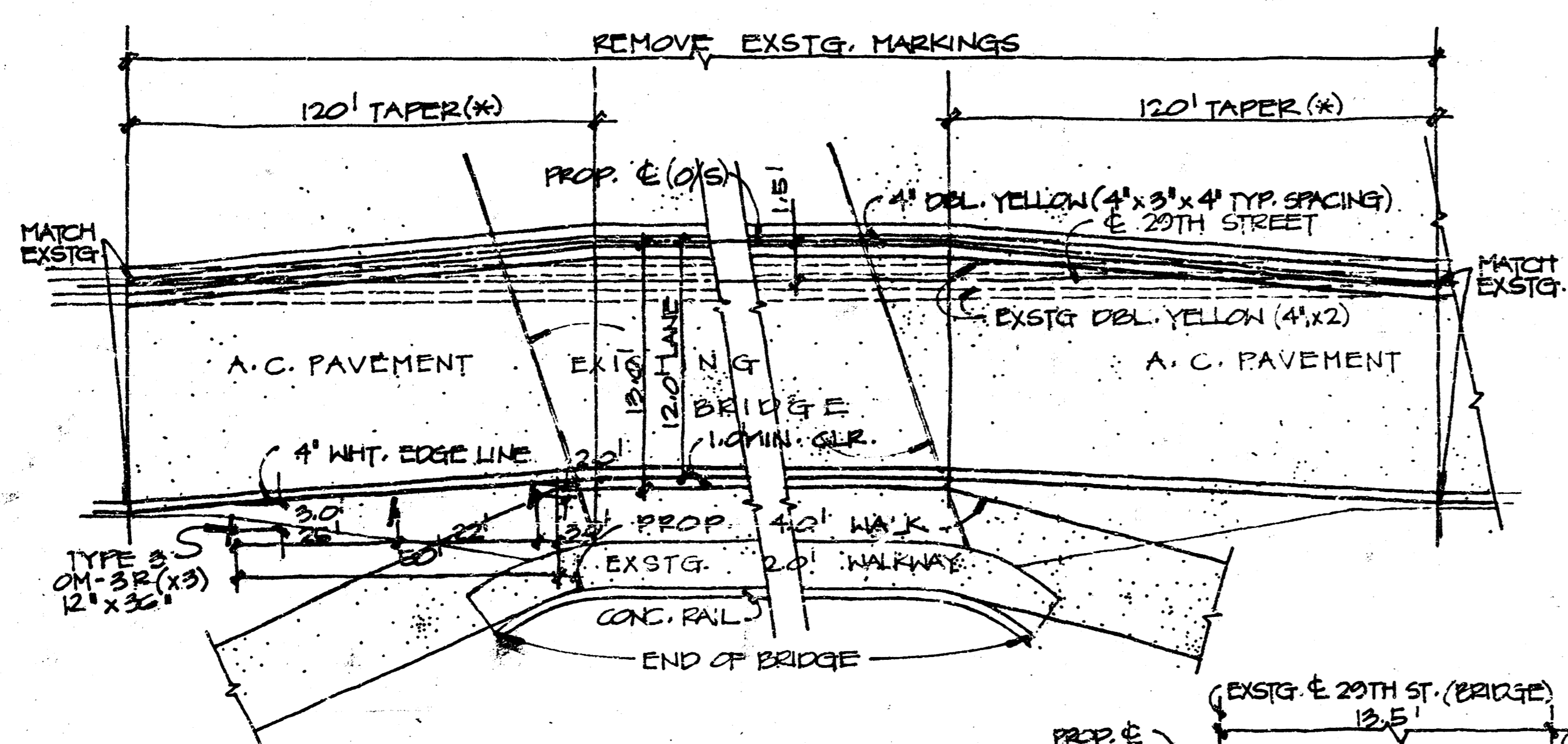
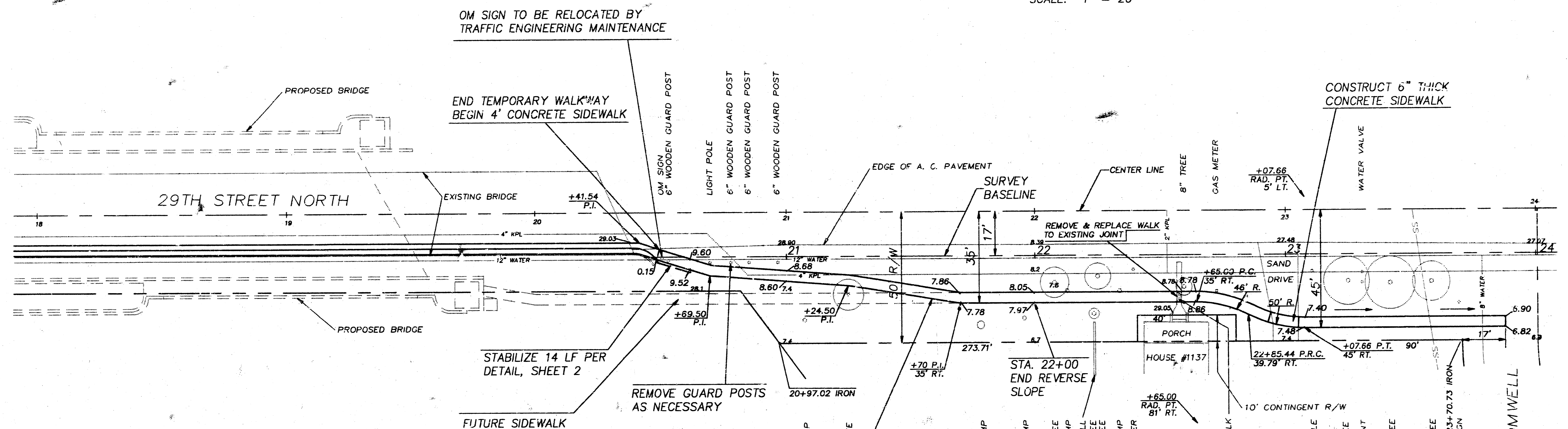
STABILIZE 18 LF PER
DETAIL, SHEET 2

SIDEWALK PLAN				
STA. 12+00 TO 18+00				
BAUGHMAN COMPANY P. A.				REV.
SURVEYING & ENGINEERING				
316/282-7271 • 315 ELLIS • WICHITA, KANSAS 67211				
PROJECT NUMBER				
472-76-245-81905-000-000-001				
DESIGN	DRAWN	APPROVED	DATE	SCALE
TCR	MPC		JUNE 1989	NOTED
				SHEET
				5
				OF
				12

FILMED FROM THE BEST
AVAILABLE COPY

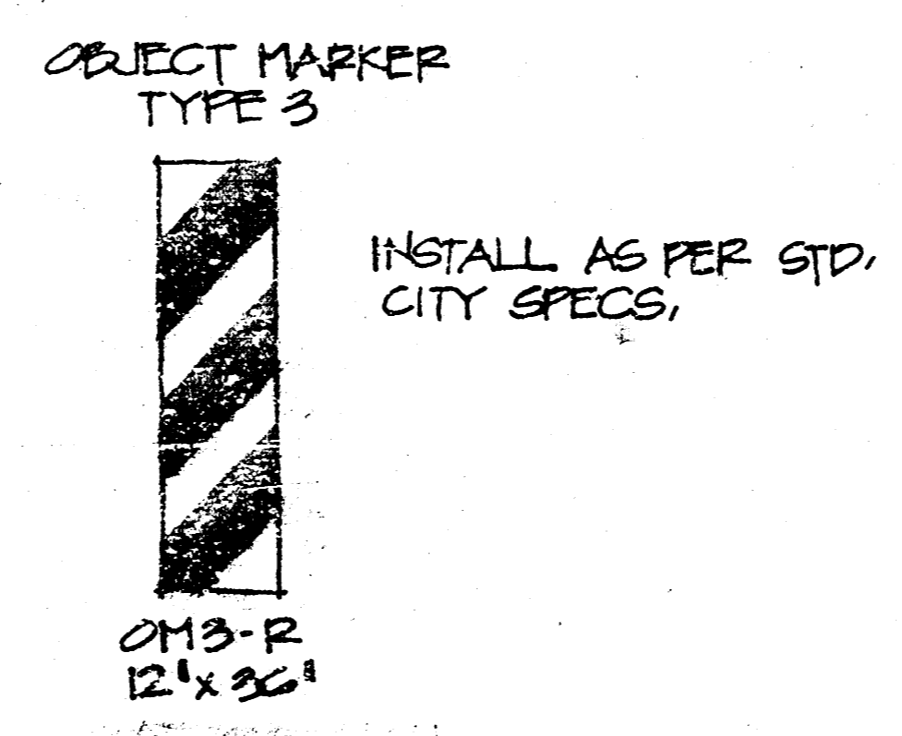
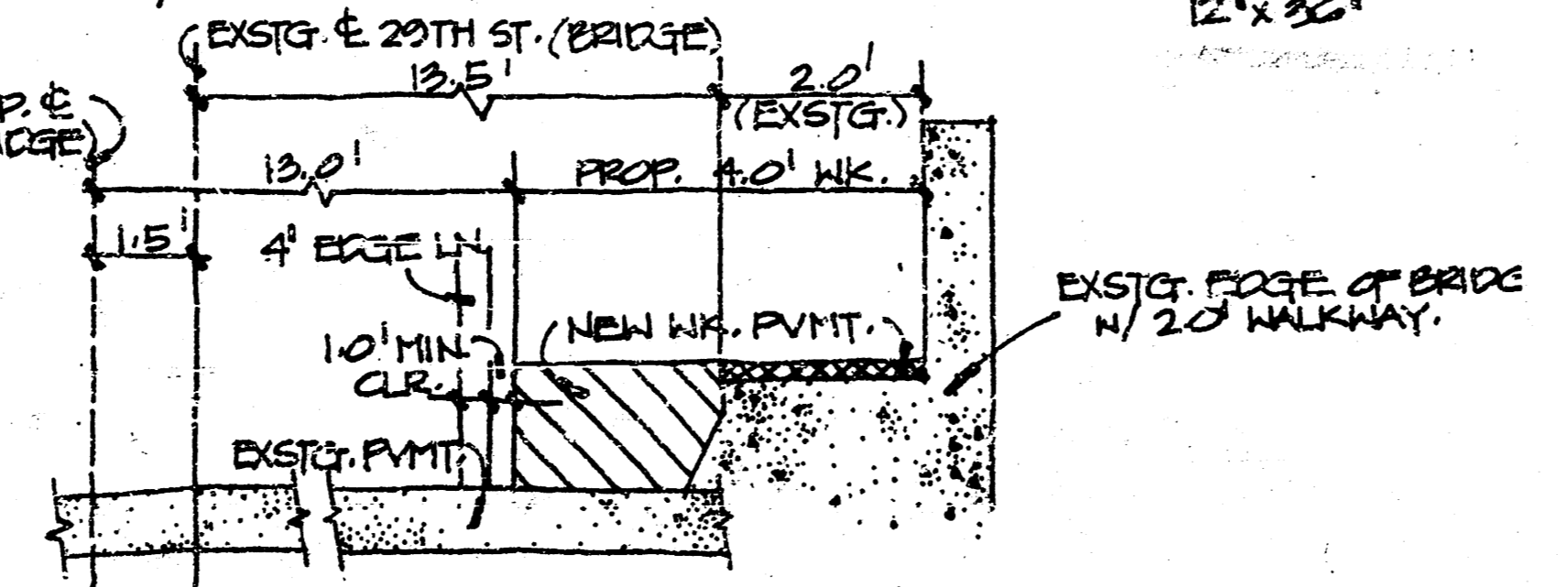


SCALE: 1" = 20'



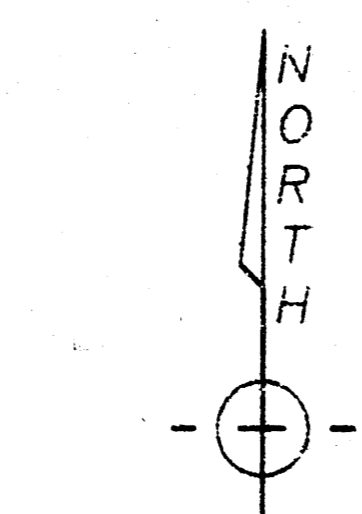
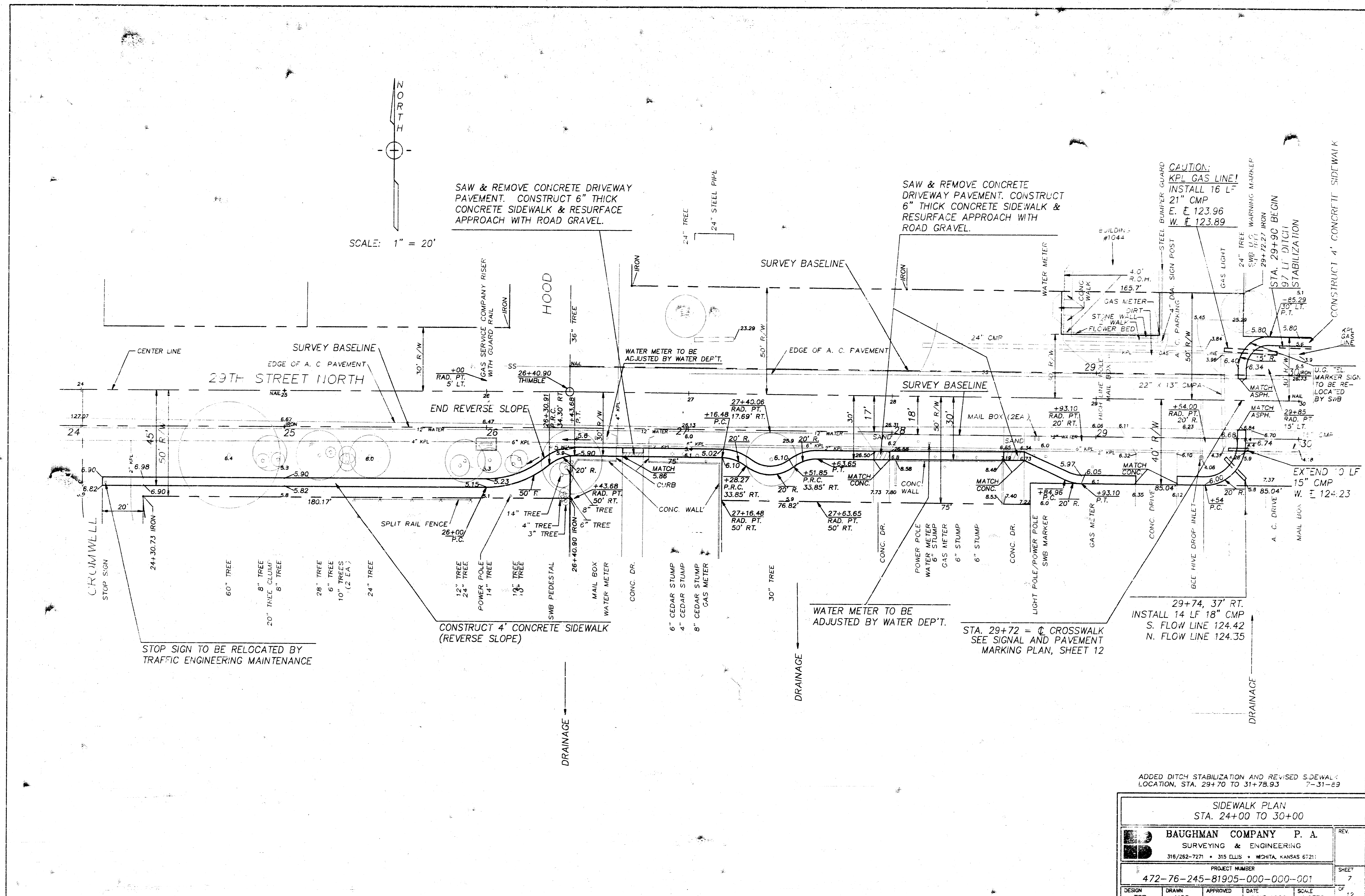
Note: Contractor to install pavement markings and object marker signs.

PAVEMENT MARKINGS AT BRIDGE
• NO SCALE •



REVISED: OMS SIGN FACE 31 JULY 89 ESB					
SIDEWALK PLAN STA. 18+00 TO 24+00					
BAUGHMAN COMPANY P. A. SURVEYING & ENGINEERING 316/262-7271 • 315 ELLIS • WICHITA, KANSAS 67211					REV.
PROJECT NUMBER 472-76-245-81905-000-000-001					SHEET 6
DESIGN TCR	DRAWN MGC	APPROVED	DATE JUNE 1989	SCALE NOTED	

FILMED FROM THE BEST AVAILABLE COPY.....



SCALE: 1" = 20'

SAW & REMOVE CONCRETE DRIVEWAY PAVEMENT. CONSTRUCT 6" THICK CONCRETE SIDEWALK & RESURFACE APPROACH WITH ROAD GRAVEL.

SAW & REMOVE CONCRETE DRIVEWAY PAVEMENT. CONSTRUCT 6" THICK CONCRETE SIDEWALK & RESURFACE APPROACH WITH ROAD GRAVEL.

CAUTION: KPL GAS LINE! INSTALL 16 LF 21" CMP
E. E 123.96
W. E 123.89

29+74, 37' RT. INSTALL 14 LF 18" CMP S. FLOW LINE 124.42 N. FLOW LINE 124.35

STA. 29+72 = ⊕ CROSSWALK SEE SIGNAL AND PAVEMENT MARKING PLAN, SHEET 12

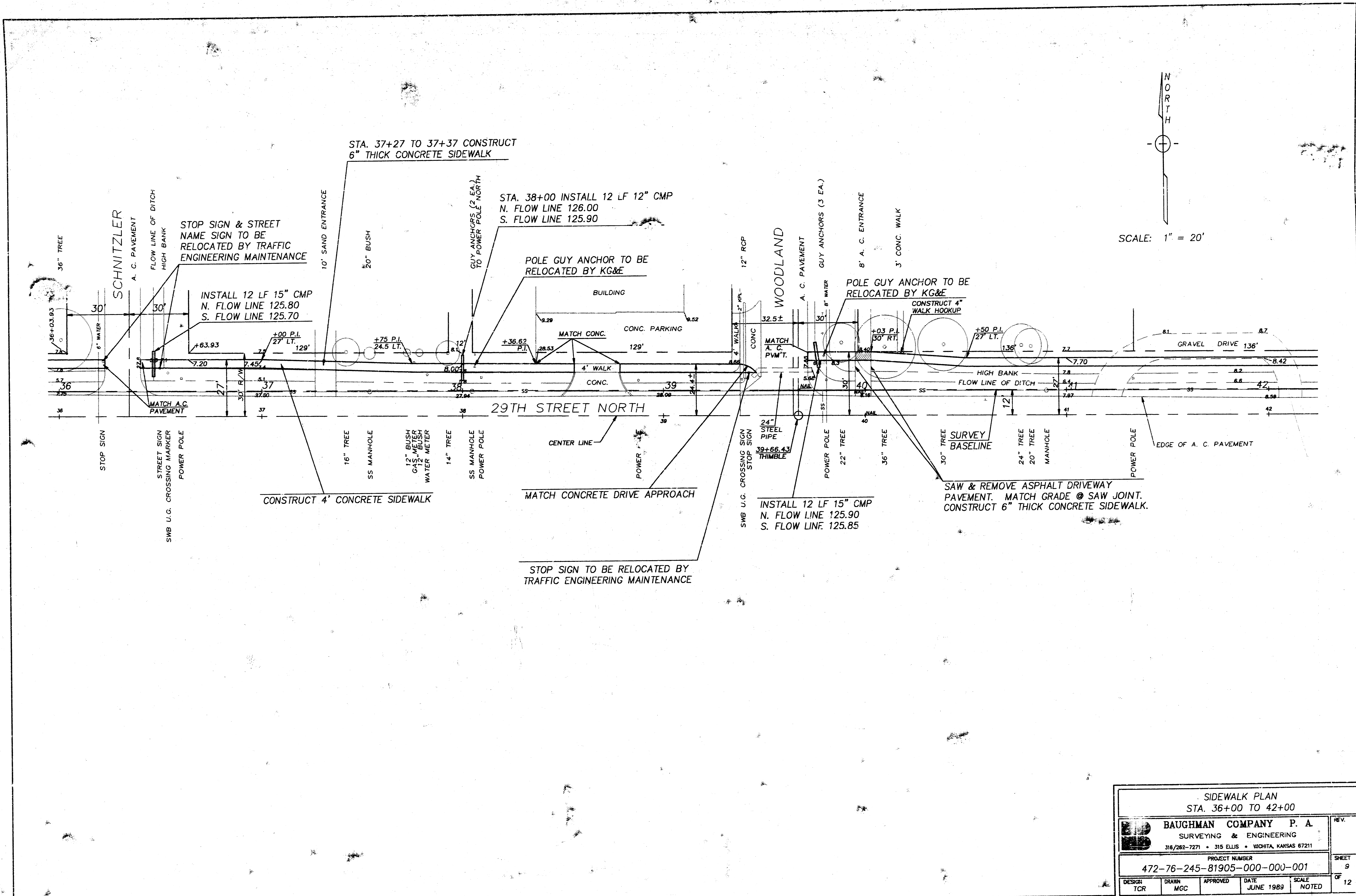
STOP SIGN TO BE RELOCATED BY TRAFFIC ENGINEERING MAINTENANCE

CONSTRUCT 4' CONCRETE SIDEWALK (REVERSE SLOPE)

ADDED DITCH STABILIZATION AND REVISED SIDEWALK LOCATION. STA. 29+70 TO 31+78.93 7-31-29

SIDEWALK PLAN STA. 24+00 TO 30+00				
BAUGHMAN COMPANY P. A. SURVEYING & ENGINEERING 316/282-7271 • 315 ELLIS • WICHITA, KANSAS 67211				
PROJECT NUMBER 472-76-245-81905-000-000-001				
DESIGN TCR	DRAWN MGC	APPROVED	DATE JUNE 1969	SCALE NOTED
				SHEET 7 OF 12

FILMED FROM THE BEST AVAILABLE COPY

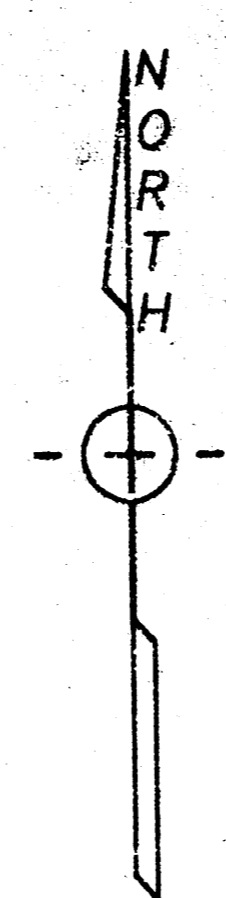
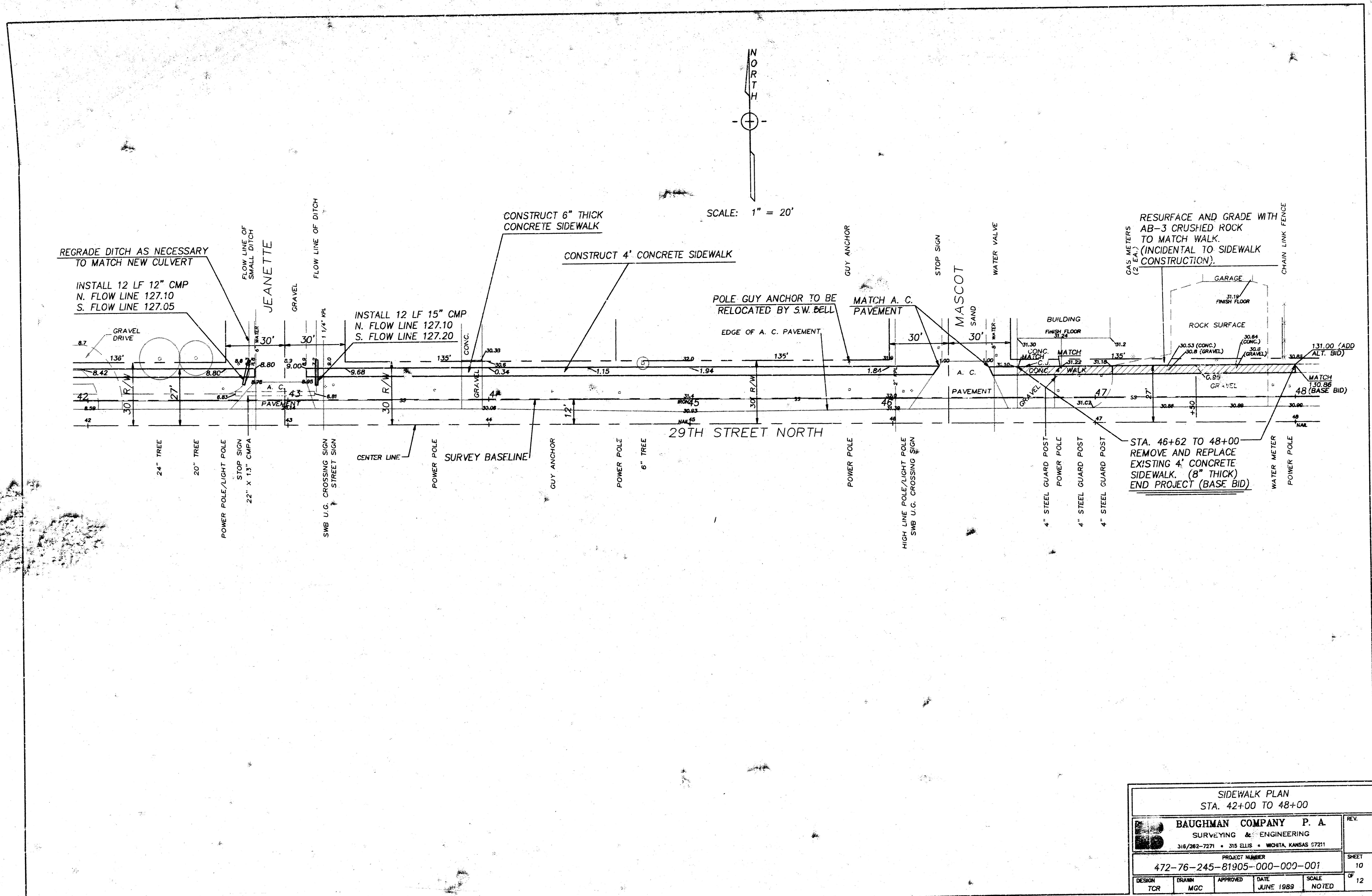


N
O
R
T
H

SCALE: 1" = 20'

SIDEWALK PLAN STA. 36+00 TO 42+00				
BAUGHMAN COMPANY P. A. SURVEYING & ENGINEERING <small>316/282-7271 • 315 ELLIS • WICHITA, KANSAS 67211</small>				
PROJECT NUMBER 472-76-245-81905-000-001				
DESIGN TCR	DRAWN MCC	APPROVED	DATE JUNE 1989	SCALE NOTED
				REV. SHEET 9 OF 12

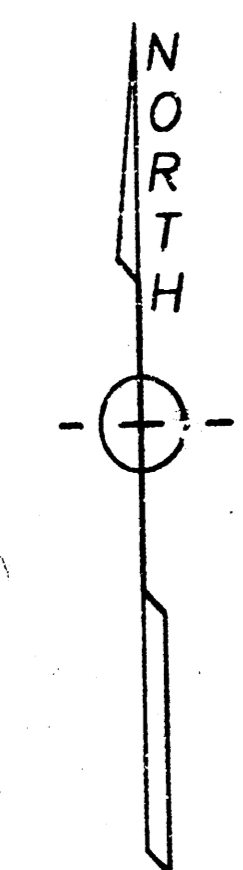
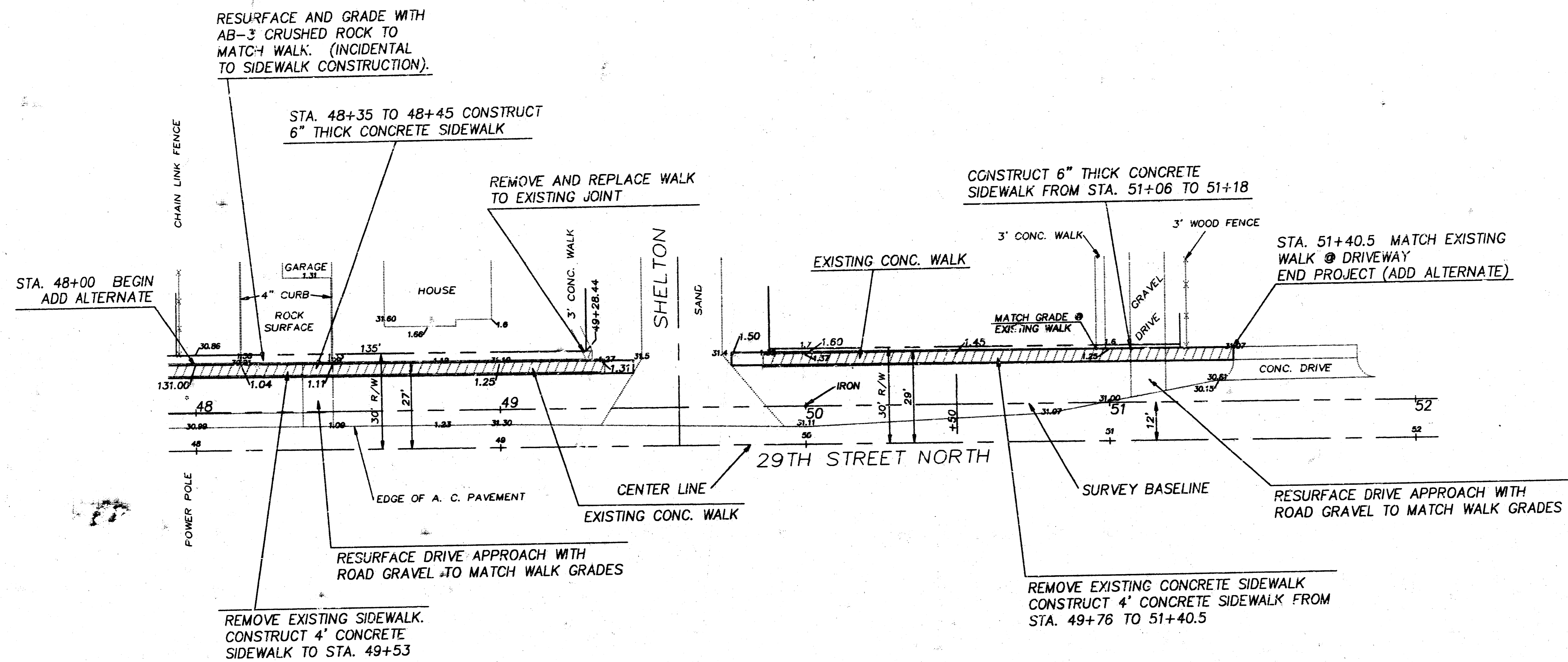
FILMED FROM THE BEST
AVAILABLE COPY



SCALE: 1" = 20'

SIDEWALK PLAN STA. 42+00 TO 48+00				
BAUGHMAN COMPANY P. A. SURVEYING & ENGINEERING 318/262-7271 • 315 ELLIS • WICHITA, KANSAS 67211				
PROJECT NUMBER 472-76-245-81905-000-001				
DESIGN TCR	DRAWN MGC	APPROVED	DATE JUNE 1989	SCALE NOTED
REV.				SHEET 10 OF 12

FILMED FROM THE BEST AVAILABLE COPY



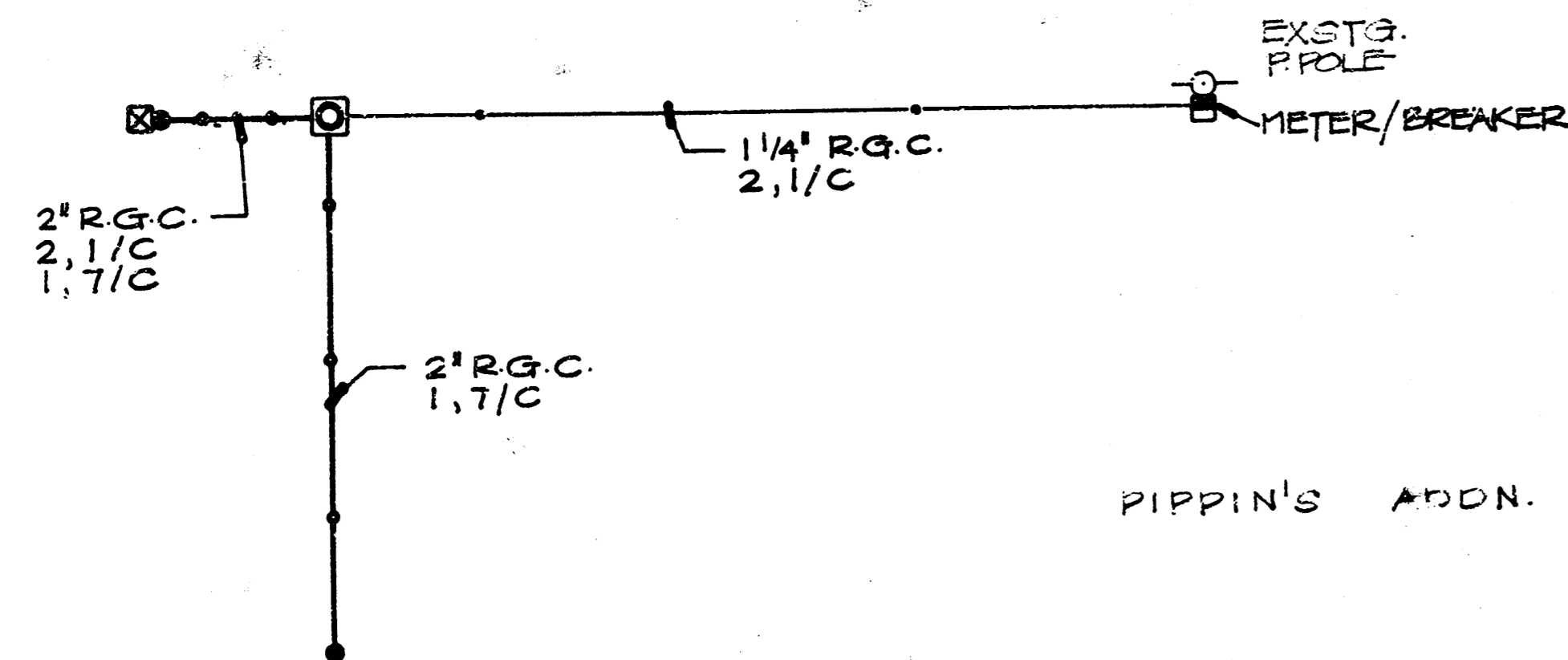
SCALE: 1" = 20'

NOTE: ALL WORK INDICATED ON THIS SHEET TO BE INCLUDED IN ADD ALTERNATE BID.

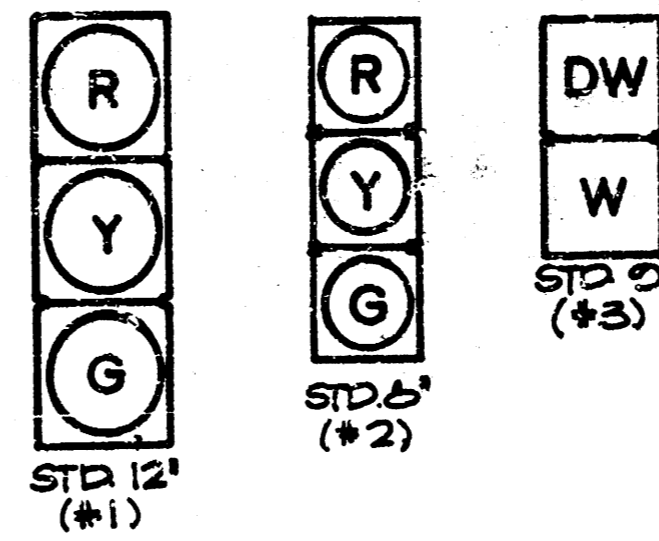
SIDEWALK PLAN (ADD ALTERNATE)				
STA. 48+00 TO 52+00				
BAUGHMAN COMPANY P. A.				REV.
SURVEYING & ENGINEERING				
262-7271 • 315 ELLIS • WICHITA, KANSAS 67211				
PROJECT NUMBER				
472-76-245-81905-000-001				
DESIGN	DRAWN	APPROVED	DATE	SCALE
TCR	MCC		JUNE 1989	NOTED
				SHEET
				11
				OF
				12

FILMED FROM THE BEST AVAILABLE COPY

CONDUCTOR RUNS



SIGNAL HEADS

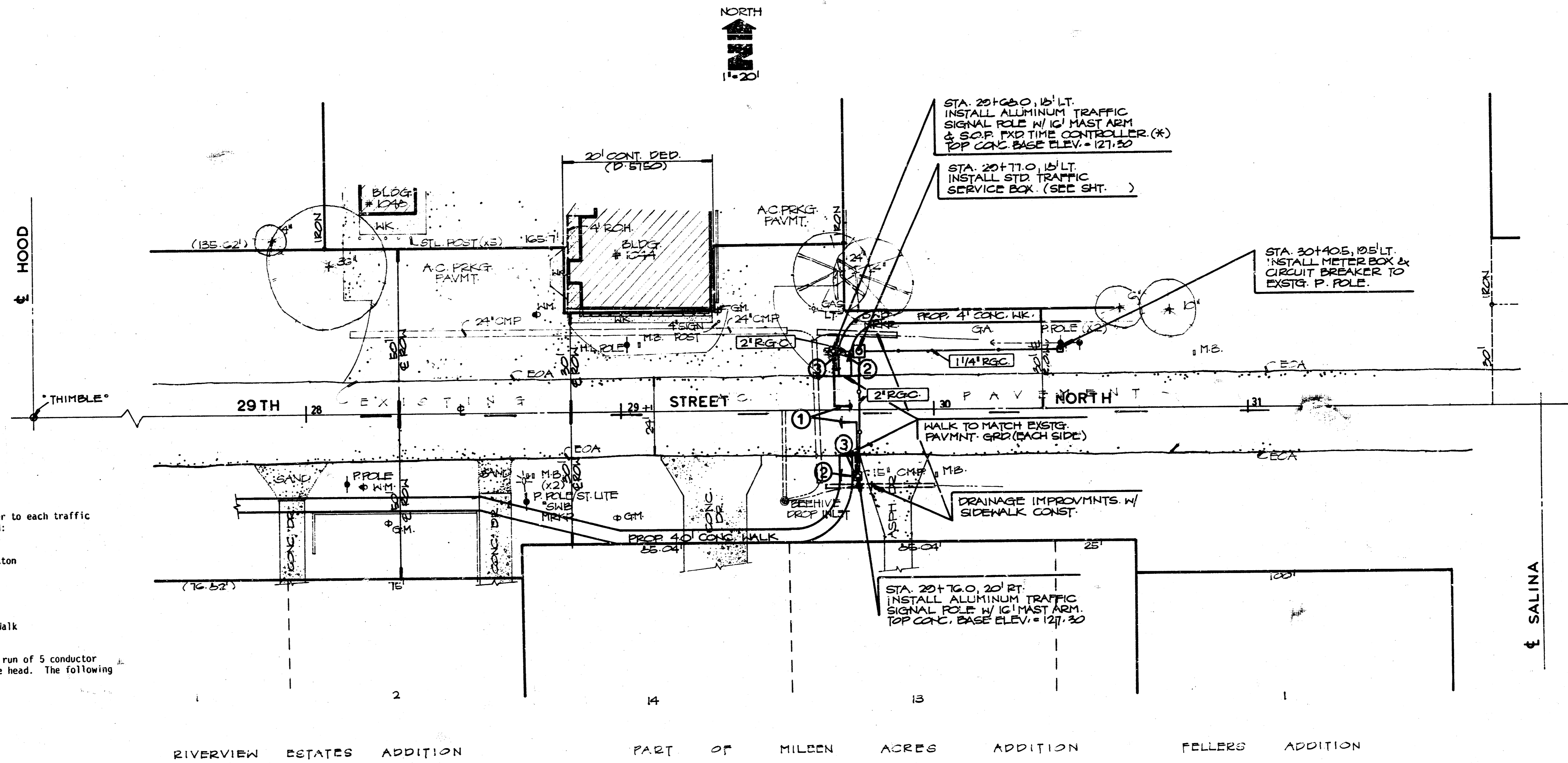


SEQUENCE CHART

SIGNAL HEAD	NORMAL DWELL	PED ACTUATION	ALL RED	PED CROSSING	PED CLEAR	ALL RED	20TH ST. MINIMUM
1 & 2	GREEN	YELLOW	RED	RED	RED	RED	GREEN
3	DONT WALK	DONT WALK	DONT WALK	WALK	FLASHING DONT WALK	DONT WALK	DONT WALK
TIME SETTING	3 SEC.	3 SEC.	3 SEC.	7 SEC.	12 SEC.	3 SEC.	20 SEC.

TOTAL CYCLE LENGTH = 60 SECONDS

PIPPIN'S ADDN. ABRAHAM ADDITION (UNPLATTED) WARENFELT ADDN.



WIRING INFORMATION

One seven conductor cable shall be run from the controller to each traffic signal pole base. The following color code shall be used:

COLOR	USE
Black	Pushbutton
White	Common
Red	Red
Green	Green
Orange	Yellow
Blue	Walk
White w/Black Tracer	Don't Walk

Each Three Section Signal head shall have one continuous run of 5 conductor cable from the pole base to the terminal block within the head. The following color code shall be used:

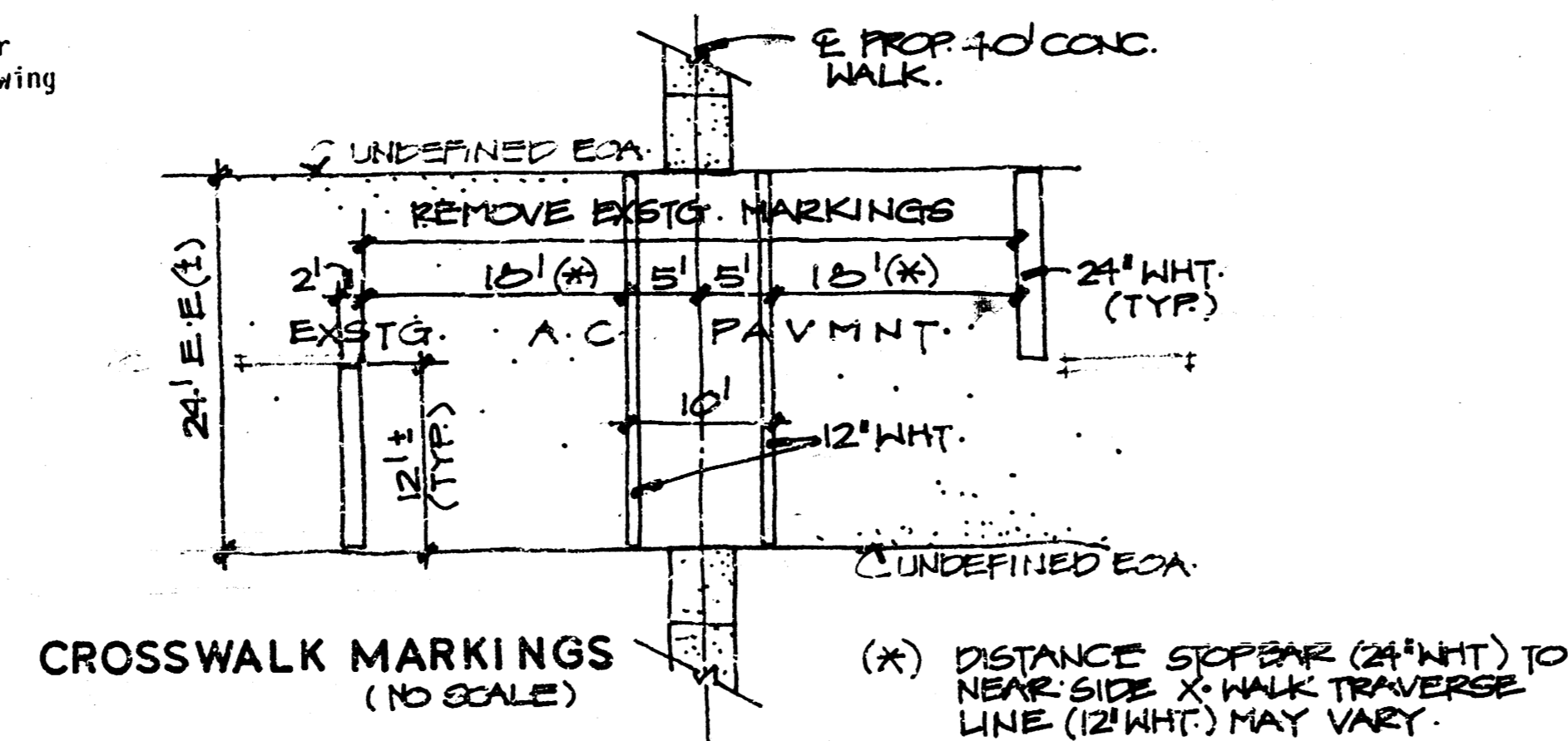
COLOR	USE
Black	Spare
White	Common
Red	Red
Green	Green
Orange	Yellow

Each two section signal head shall have one continuous run of a 3 conductor cable from the pole base to the terminal block within the head. The following color code shall be used:

COLOR	USE
Black	Walk
White	Common
Red	Don't Walk

Each Pedestrian Pushbutton shall have one continuous run of two conductor cable from the base of the signal pole to the pushbutton. The following color code shall be used:

COLOR	USE
Black	Pushbutton
White	Common



CONTROLLER DESCRIPTION
 (*) THE CONTROLLER FOR THIS INSTALLATION SHALL BE A FIXED-TIME, HEAVY DUTY, MID-BLOCK, PEDESTRIAN ACTUATED TRAFFIC CONTROLLER.

NOTE:
 ALL COMPONENTS FOR THE COMPLETE SIGNALIZED CROSSWALK SHALL BE FURNISHED AND INSTALLED BY THE CITY OF WICHITA. TRAFFIC ENG. MAINTENANCE DEPT. EXCEPT THAT ALL PAVEMENT MARKINGS SHALL BE FURNISHED AND INSTALLED BY THE CONTRACTOR.

REVISED: S.W. ALLEN N.S. 31 JULY 69 SRS

SIGNALIZED PEDESTRIAN CROSSWALK
 (29TH ST. N. BETWEEN HOOD & SALINA)

412-76-245-81005-000-000-001

BAUGHMAN COMPANY, P.A.
 SURVEYING & ENGINEERING

316-262-7271 • 315 ELLIS • WICHITA, KANSAS 67211

Design: T.C.E. SONNY Approved: [Signature] Date: JUN 69 Scale: 1"=20'

FILMED FROM THE BEST AVAILABLE COPY