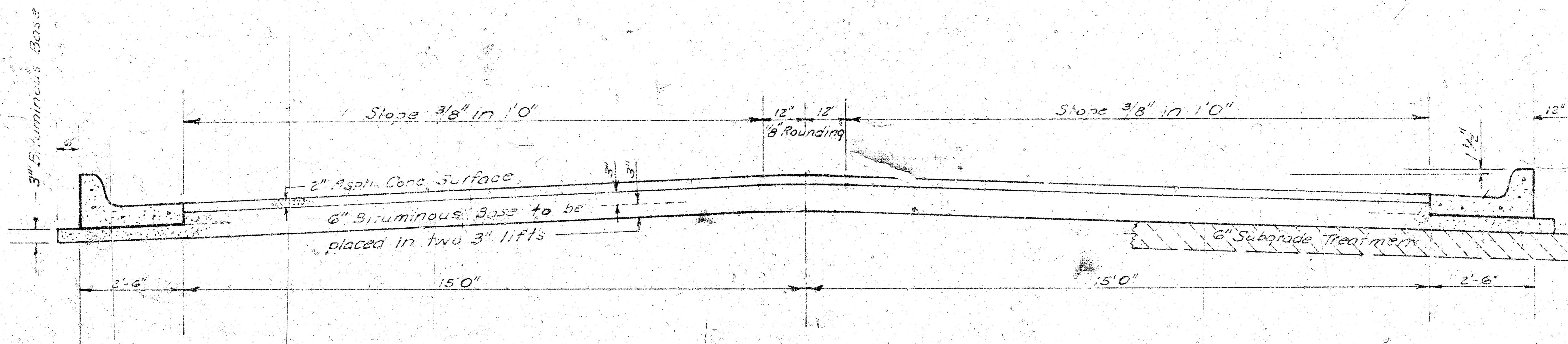


BARTLETT COURT
 Lots 16 - 24, Blk 3, Westlink Village 14th Addn.
 N. L. Bartlett to & Including Cul-de-Sac
CITY OF WICHITA, KANSAS
 R.W. Linn — City Engineer
 Proj. No. DAKS577033



TYPICAL SECTION

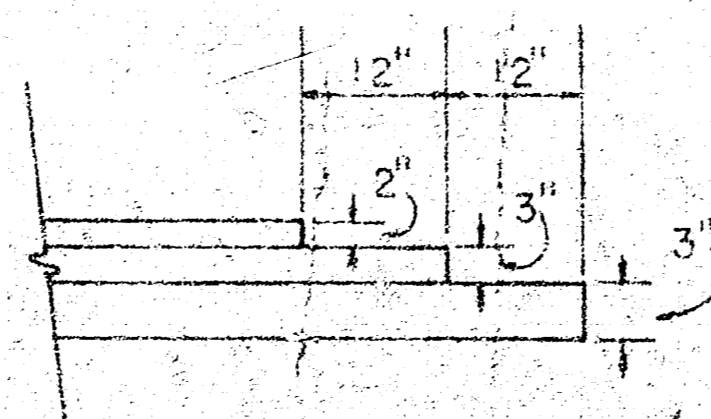
35' ASPHALTIC CONCRETE PAVEMENT WITH BITUMINOUS BASE

The A.C. Pavement between the comb. curb & gutter shall be paid as Sq. Yds. 3" Bituminous Base.
The Bituminous Base under the comb. curb & gutter shall be paid as Sq. Yds. 3" Bituminous Base.

A TACK COAT OF EMULSIFIED ASPHALT (SS-1H) SHALL BE APPLIED AT AN APPROXIMATE RATE 0.05 GALLONS PER SQ. YD. BETWEEN LIFTS OF ASPHALTIC MATERIALS WHEN ORDERED BY THE ENGINEER. TACK COAT WILL NOT BE PAID FOR DIRECTLY AND SHALL BE CONSIDERED AS SUBSIDIARY TO PRICE BID FOR ASPHALTIC PAVEMENT.

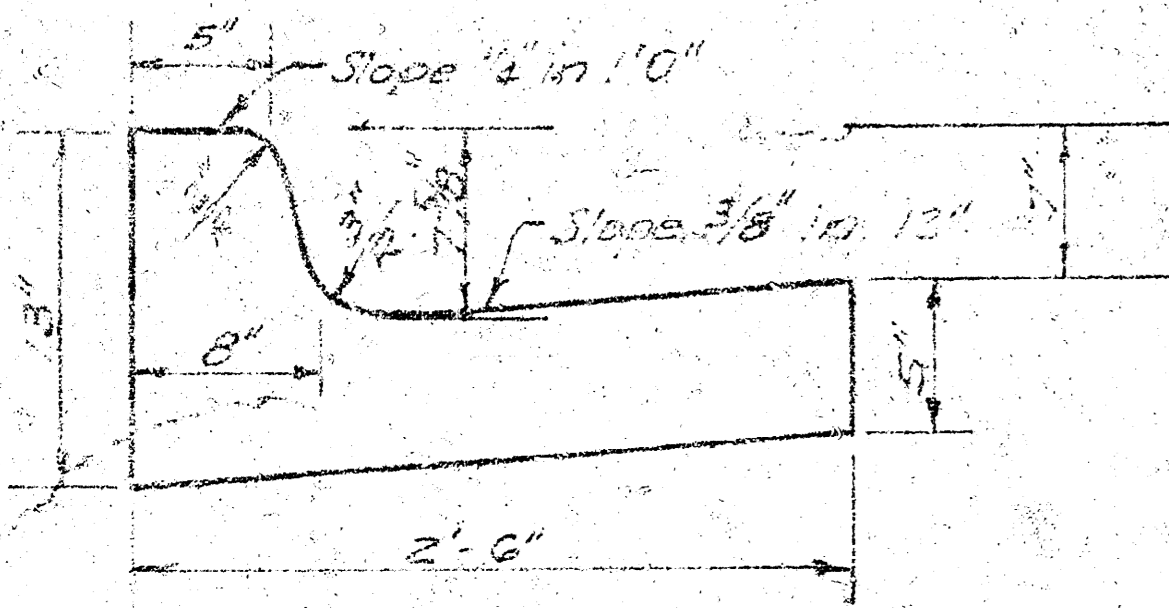
BITUMINOUS BASE AND ASPHALTIC CONCRETE WEARING SURFACE SHALL BE PLACED WITH A LAYDOWN MACHINE HAVING AUTOMATIC ELECTRONIC CONTROLS FOR CROWN AND GRADE. CONSTRUCTION JOINTS IN EACH LIFT SHALL BE STAGGERED A MINIMUM DISTANCE OF 1' WITH JOINTS IN PRECEDING LIFTS AND PLACED SUCH THAT A JOINT WILL BE CONSTRUCTED ON THE CENTERLINE IN THE TOP LIFT.

DETAIL OF TRANSVERSE CONSTRUCTION JOINTS

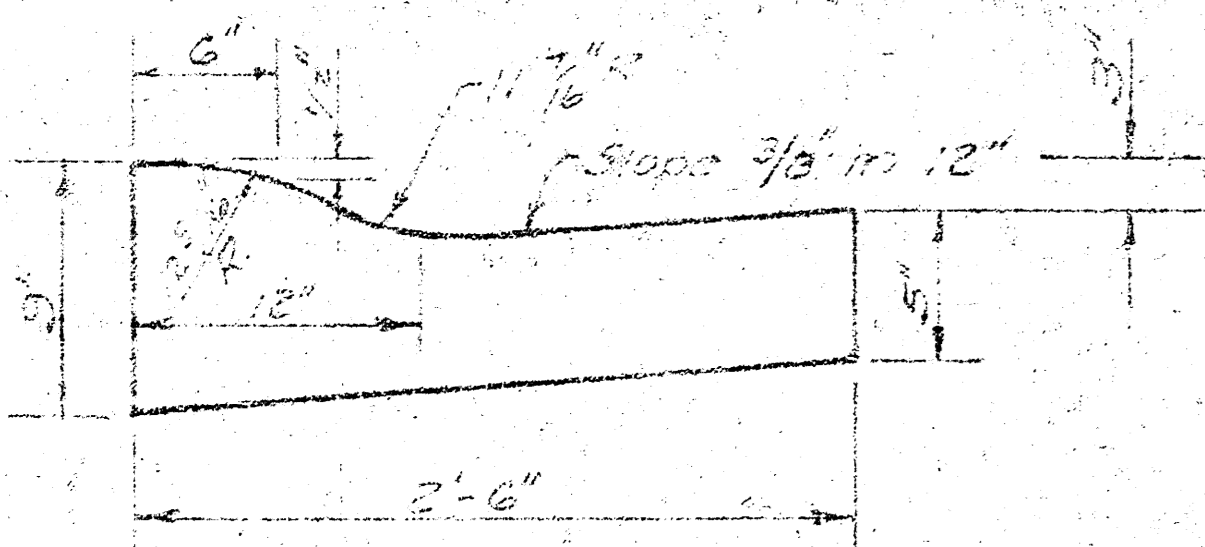


TRANSVERSE CONSTRUCTION JOINTS SHALL BE CONSTRUCTED IN FLEXIBLE BASE PAVEMENTS AT LOCATIONS WHERE PAVEMENT TEMPORARILY ENDS TO FACILITATE FUTURE PAVEMENT CONSTRUCTION AS SHOWN BY DETAIL. THE COST OF CONSTRUCTING THE TRANSVERSE CONSTRUCTION JOINTS SHALL NOT BE MEASURED OR PAID FOR DIRECTLY BUT SHALL BE INCLUDED IN THE BID PRICE FOR SQUARE YARDS OF ASPHALTIC CONCRETE PAVEMENT.

COMBINED CURB & GUTTER



ROLL TYPE CURB & GUTTER



CITY OF WICHITA, KANSAS

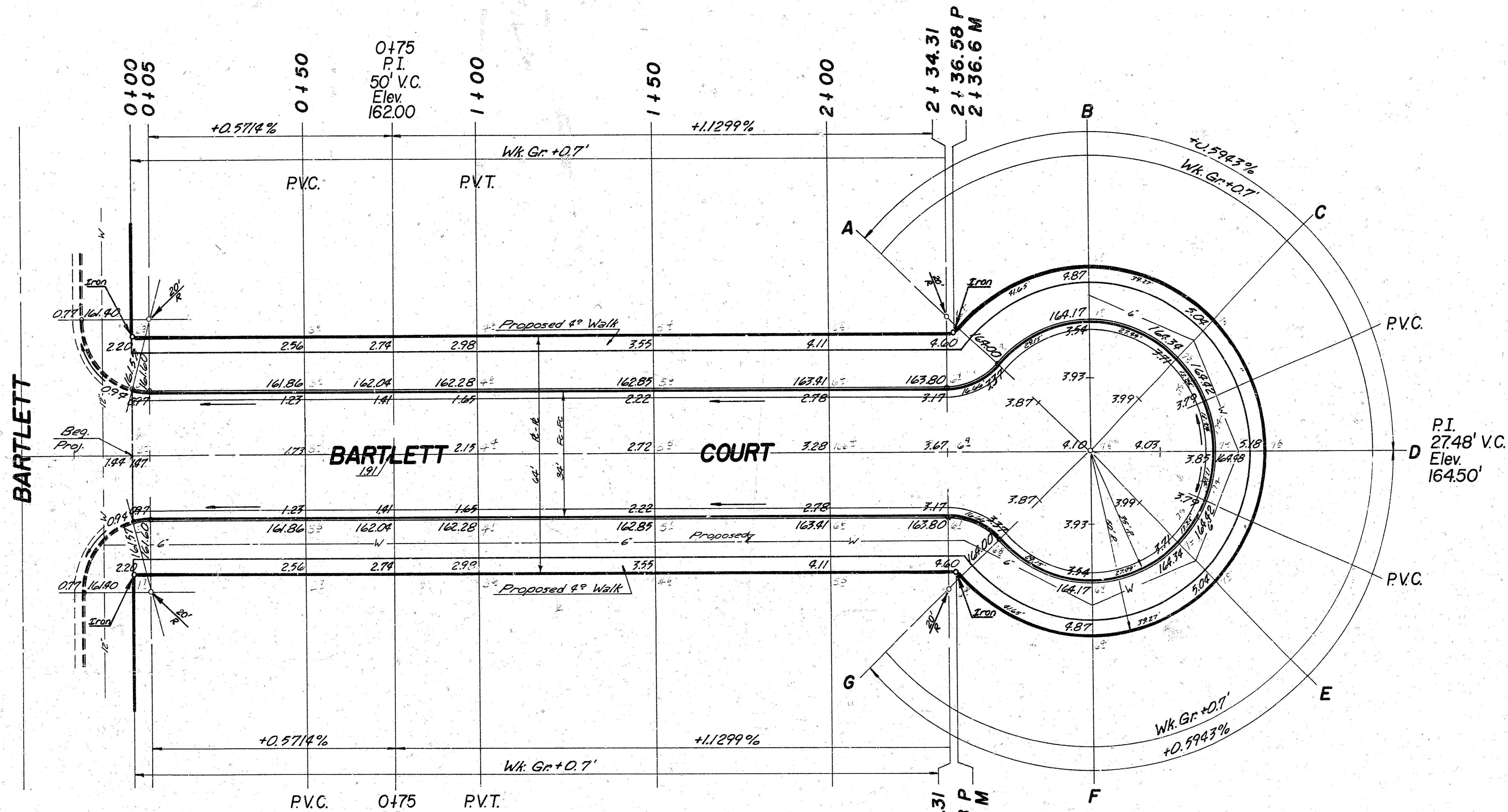
DEPARTMENT of PUBLIC WORKS - Engineering

Division

R.W. LINN CITY ENGINEER

DATE Proj. No. **DAKS577033**

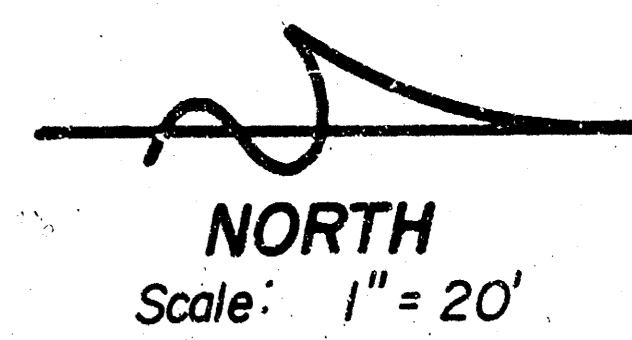
B.M. = 152.11 R.R. Spike W. Fc. P.P. N.W. Cor. Maize Rd. & Bartlett
 B.M. = 164.49 R.R. Spike W. Fc. P.P. S.W. Cor. 17th & Maize Rd.
 Baseline is W. L. Bartlett Ct.



EARTHWORK

Excavation	2309.3	Comp. Fill	0.0
+10%	230.9		
Total	2540.2	C. Y.	
Manipulation	1454.7	S. Y.	

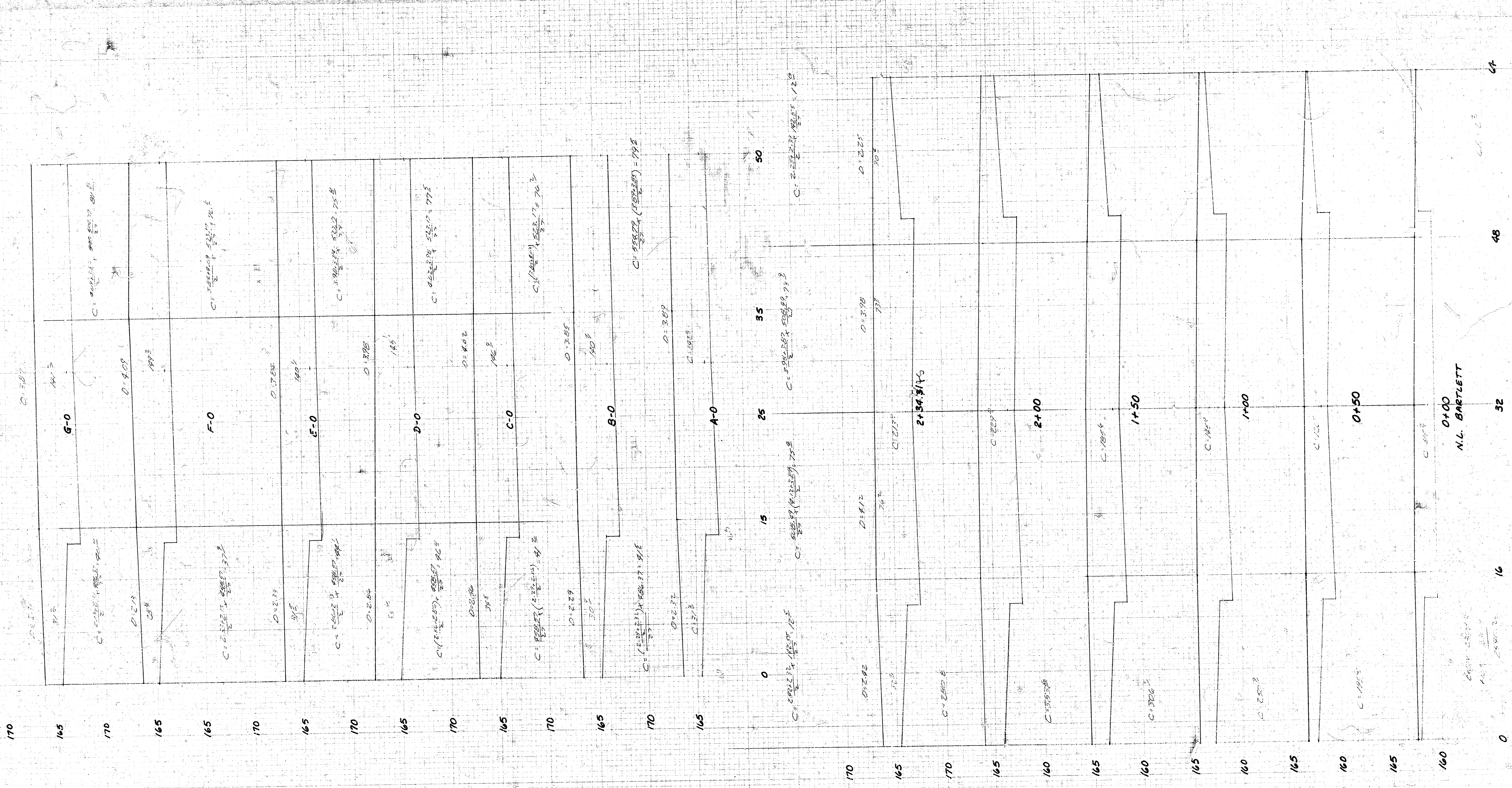
General Notes
 1. No More Than 3-20' Drives or the Equivalent Can be Constructed on this Project.
 2. Extra Excavation from this Project is to be Stockpiled as Designated by the Engineer and Used on Other Projects in Westlink Village 14th Addition.



NOTE TO FIELD ENGINEER & CONTRACTOR
 Grade parking and clear right-of-way for proposed sidewalk. Compact fill in sidewalk area. TO BE CONSTRUCTED BY "OTHERS".

SUB-GRADE
 TYPE OF SUB-GRADE TREATMENT SHALL BE DETERMINED BY THE FIELD ENGINEER. SUB-GRADE TREATMENT SHALL CONSIST OF LIME TREATMENT, CEMENT TREATMENT, SUB-GRADE MODIFICATION, OR ANY COMBINATION OF THESE.

BARTLETT COURT
 Lots 16 thru 24 incl., Blk. 3, Westlink Village 14th Addn.
 N. L. Bartlett to & incl. Cui-de-Sac
 (34' Fc-Fc 8" Asphalt Pavt. w/ Comb. Cb. & Gtr.)
CITY OF WICHITA, KANSAS
 R.W. Linn ——— City Engineer
 Proj. No. DAKS577033
 Date: _____



BARTLETT CT.
DAK5577033