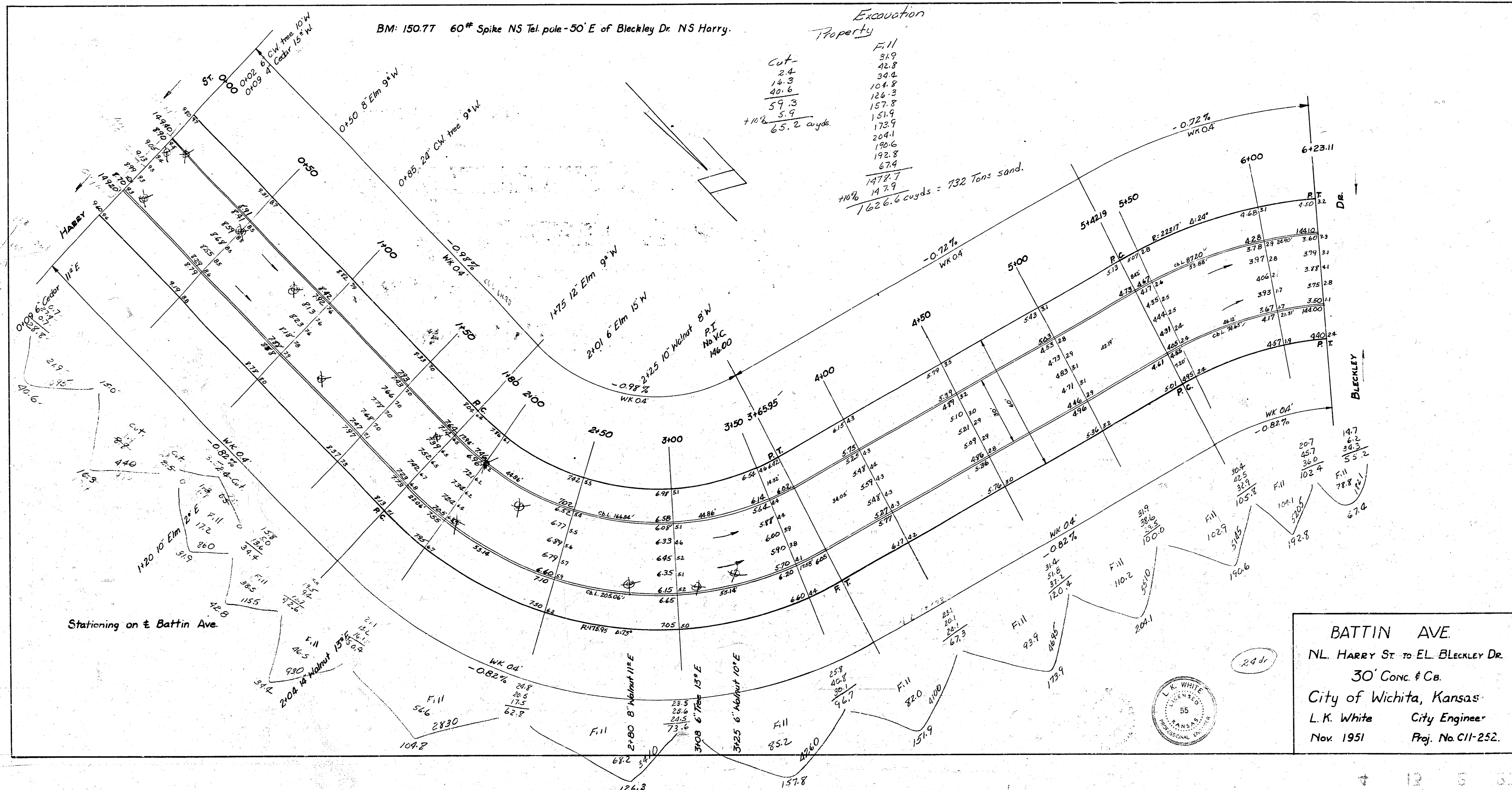


BM: 150.77 60' Spike NS Tol. pole - 50' E of Bleckley Dr. NS Harry.

Excavation Property

Cut-	31.9
	42.8
	2.4
	14.3
	40.6
	59.3
+11% 5.9	151.9
	172.9
	204.1
	190.6
	192.8
	67.4
	1478.7
+10%	147.9
1626.6 cu yds = 732 Tons sand.	



BATTIN AVE.
 NL. HARRY ST. TO EL. BLECKLEY DR.
 30' CONC. & CB.
 City of Wichita, Kansas
 L. K. White City Engineer
 Nov. 1951 Proj. No C11-252.

