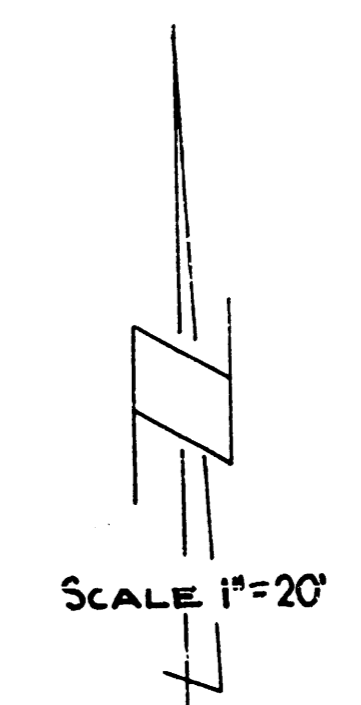
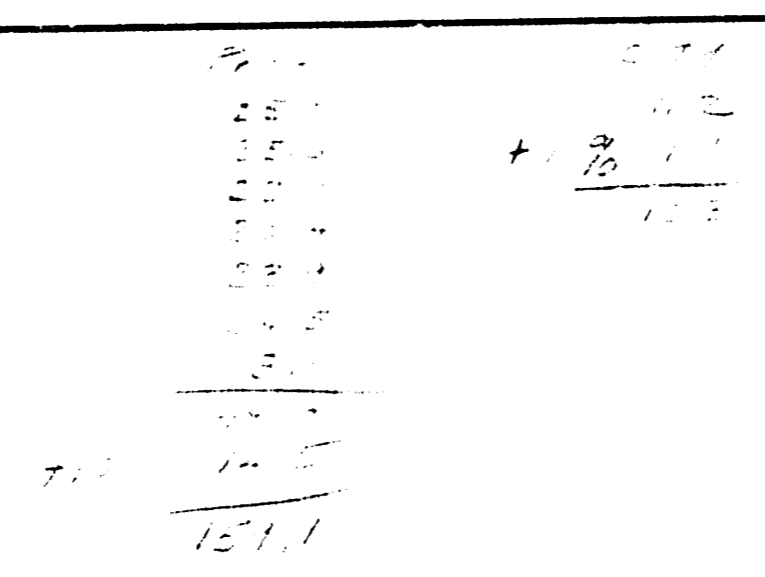


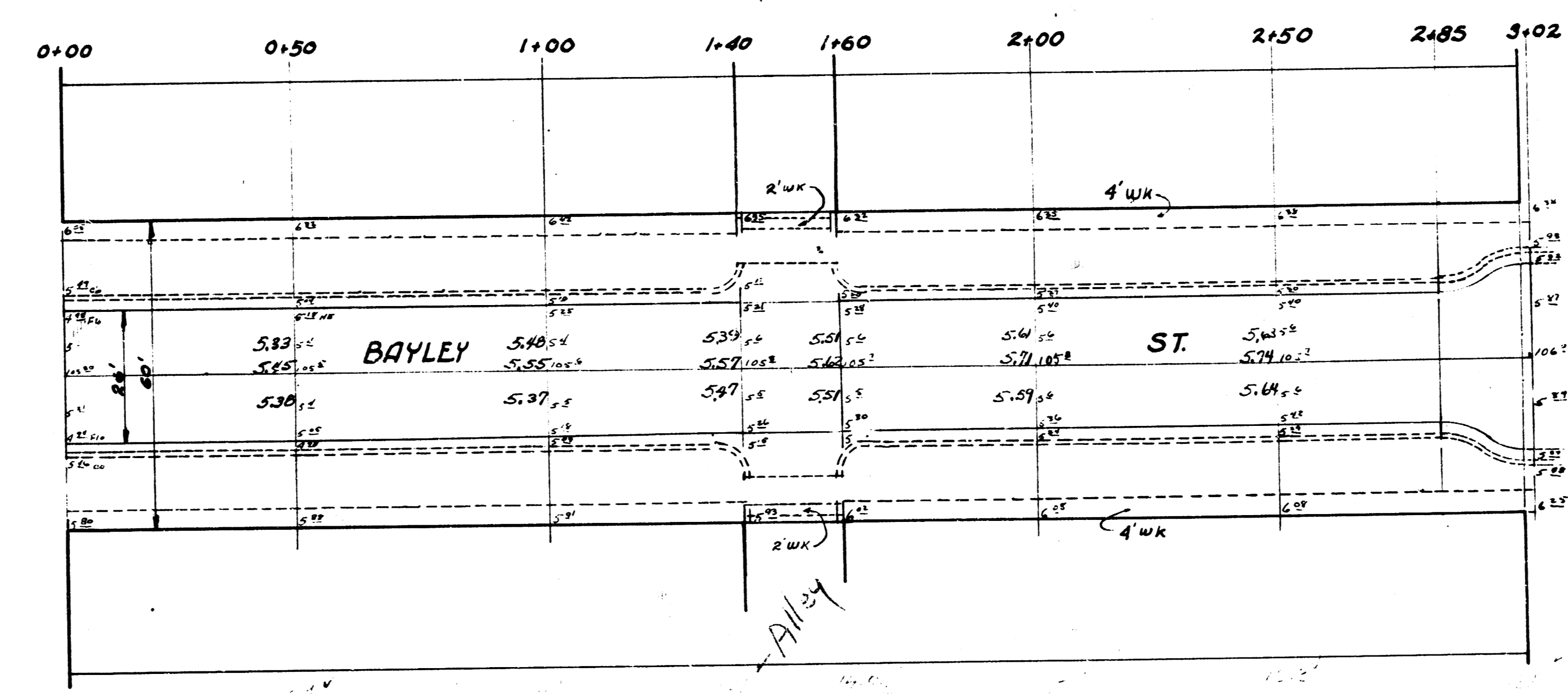
B.M. 105.08 Iron in thimble @ Laura & Bayley
 B.M. 105.94 3" in Globe Top of E.S. Lulu - N.S. Bayley



AVE.

AVE.

0-40 Thimble & Bolt
 Laura & Bayley



LAURA

PATTIE

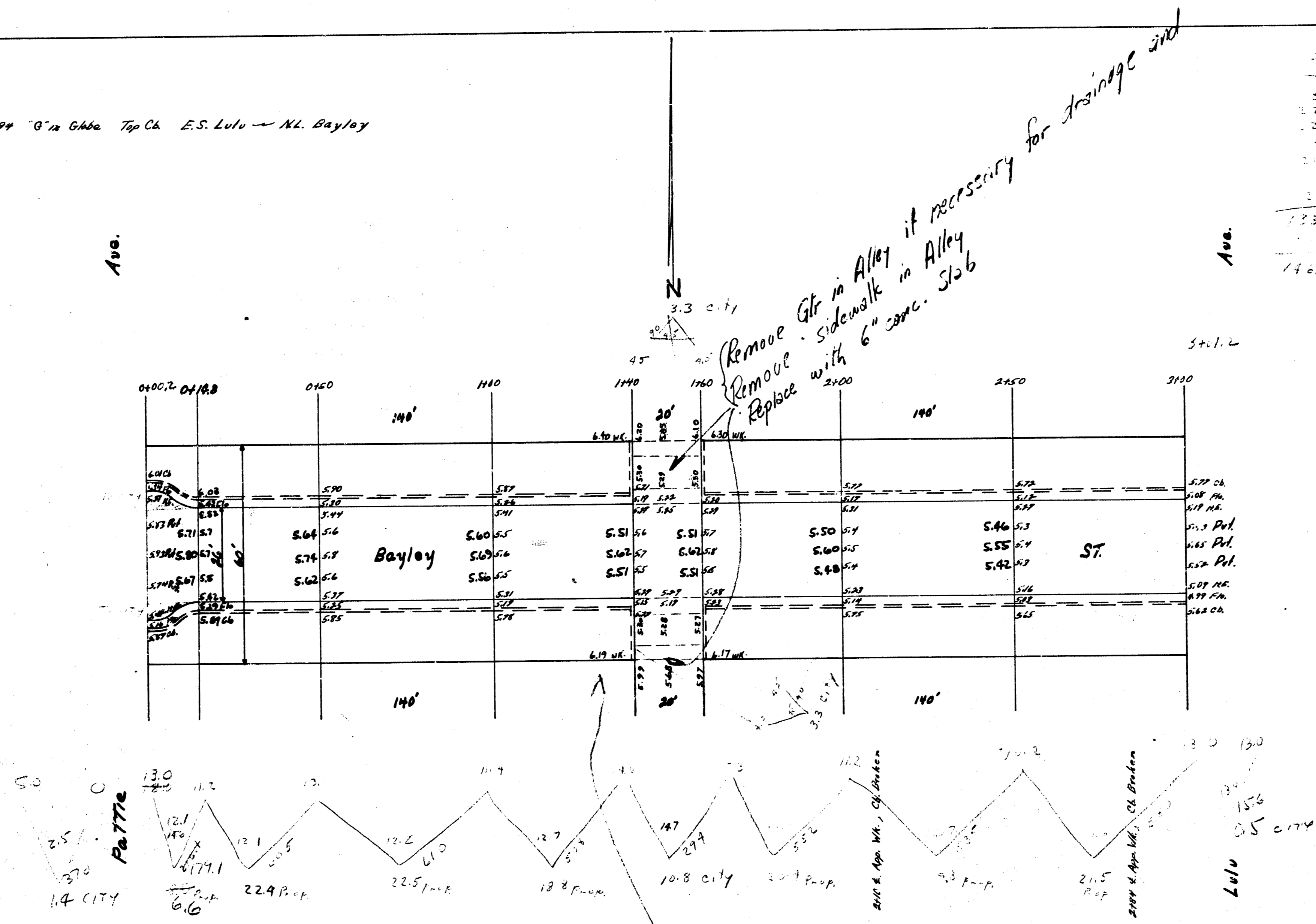
BAYLEY ST.
 ELLAURA AVE TO WL. PATTIE AVE.
 26' Conc.
 CITY OF WICHITA, KANSAS.
 L.K. WHITE CITY ENGINEER
 OCT. 1951 PROJ. NO. C11-152



B.M. 105.94 0' in Gable Top Ch. E.S. Lulu - N.E. Bayley

Ave.

Ave.



Remove enough Comb
to correct low flow line

Bayley Ave.
E.L. Pattie — W.L. Lulo
26' Conc.
City of Wichita, Kansas
L.K. White City Engineer
September 1948 Project C10-198

13