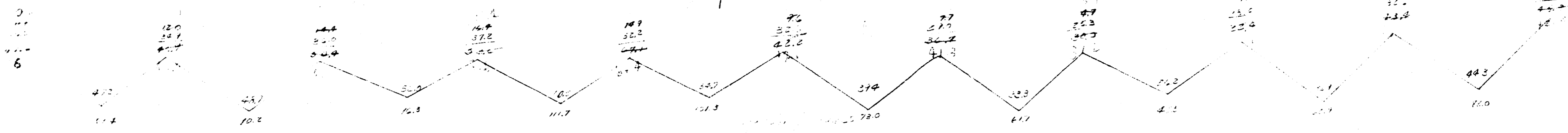
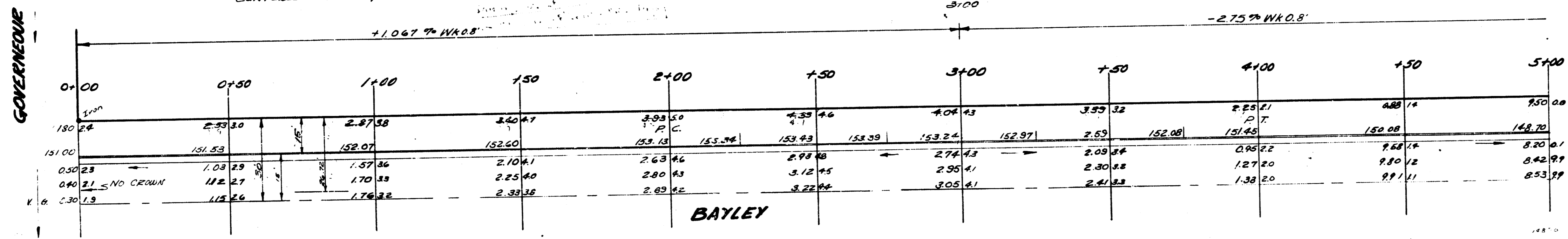


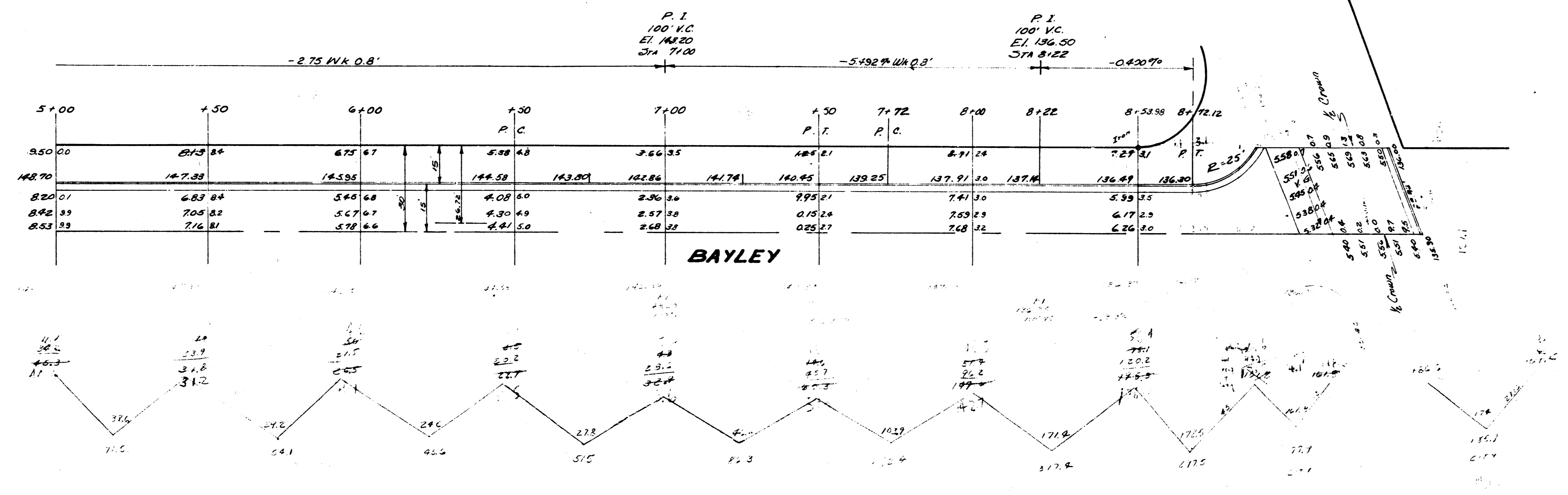
B.M. 158.32 Spike in N Side of P.P. SW Cor. Governour & Lincoln
 Starting on E



NOTE: EASTRIDGE 9TH ADDN. PLATTED ONLY
 26.72' R/W FOR BAYLEY. EASTRIDGE 10TH WEL
 PLAT 33.28' R/W FOR 40' TOLR. PAVT. TO BE
 CENTERED ON 60' R/W.

P.I.
 200' VC
 ELEV. 154.20
 3100





12.11.16
C.B.105