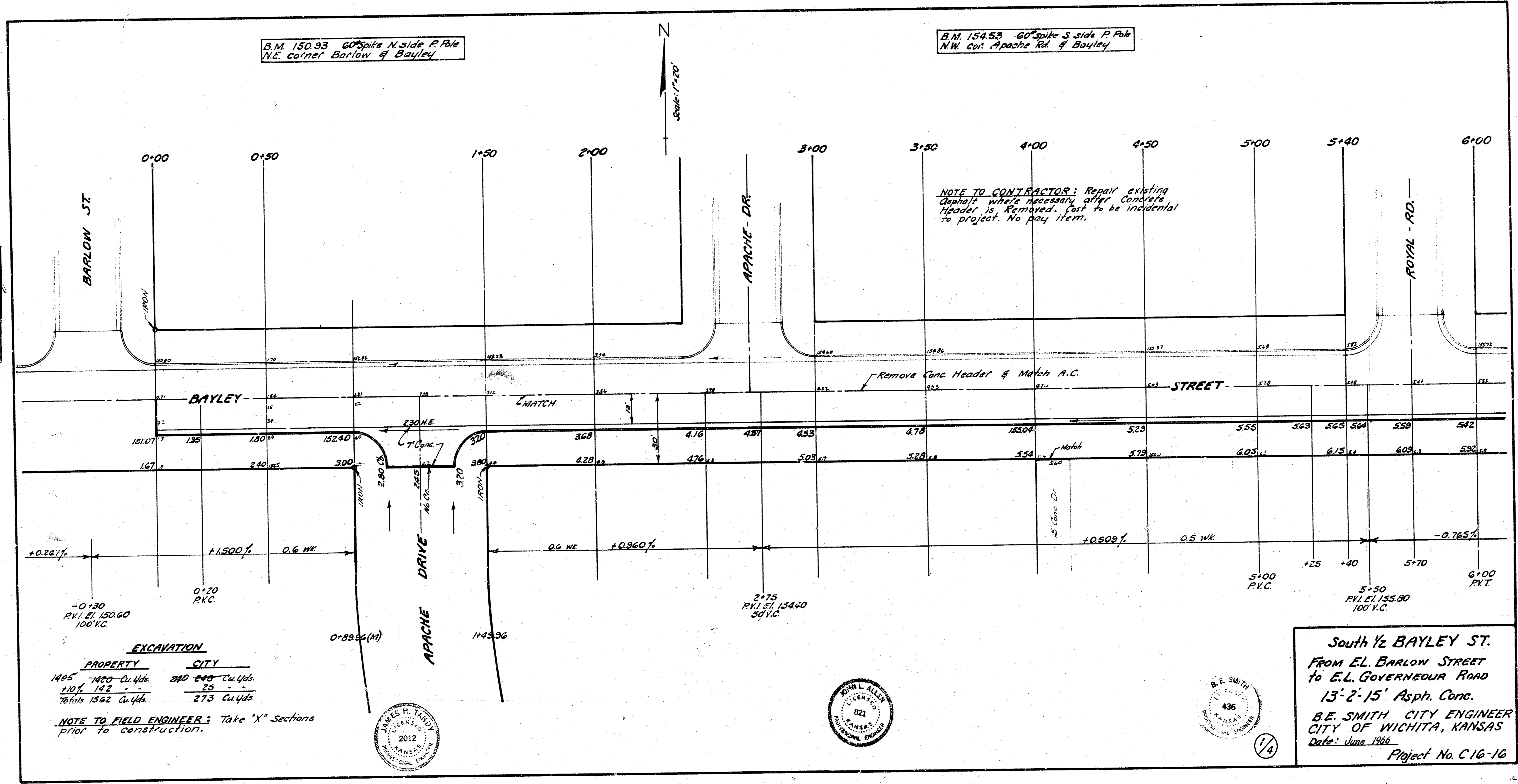


Surveyed by BH 2381  
 Plan 11/14  
 Checked J.L.

B.M. 150.93 60' spike N. side P. Pole  
 N.E. corner Barlow & Bayley

B.M. 154.53 60' spike S. side P. Pole  
 N.W. cor. Apache Rd & Bayley



NOTE TO CONTRACTOR: Repair existing  
 Asphalt where necessary after Concrete  
 Header is Removed. Post to be incidental  
 to project. No pay item.

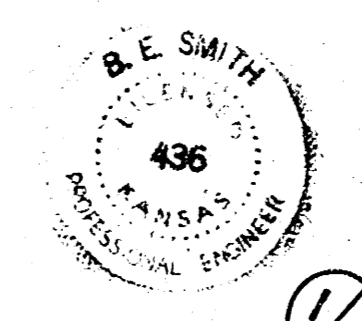
Remove Conc Header & Match A.C.

+0.26%  
 -0.30 PVI EL 150.60 100' V.C.  
 +1.50%  
 0+20 P.V.C.  
 0.6 WK  
 0+33.36 (M)  
 145.96  
 0.6 WK  
 +0.960%  
 2+75 PVI EL 154.40 50' V.C.  
 +0.509%  
 0.5 WK  
 5+00 P.V.C.  
 +25  
 +40  
 5+70  
 5+90 PVI EL 155.80 100' V.C.  
 -0.765%  
 6+00 P.V.T.

**EXCAVATION**

PROPERTY	CITY
1465 7820 Cu Yds	240 240 Cu Yds
107 142	29
76116 1562 Cu Yds	273 Cu Yds

NOTE TO FIELD ENGINEER: Take 'X' Sections  
 prior to construction.

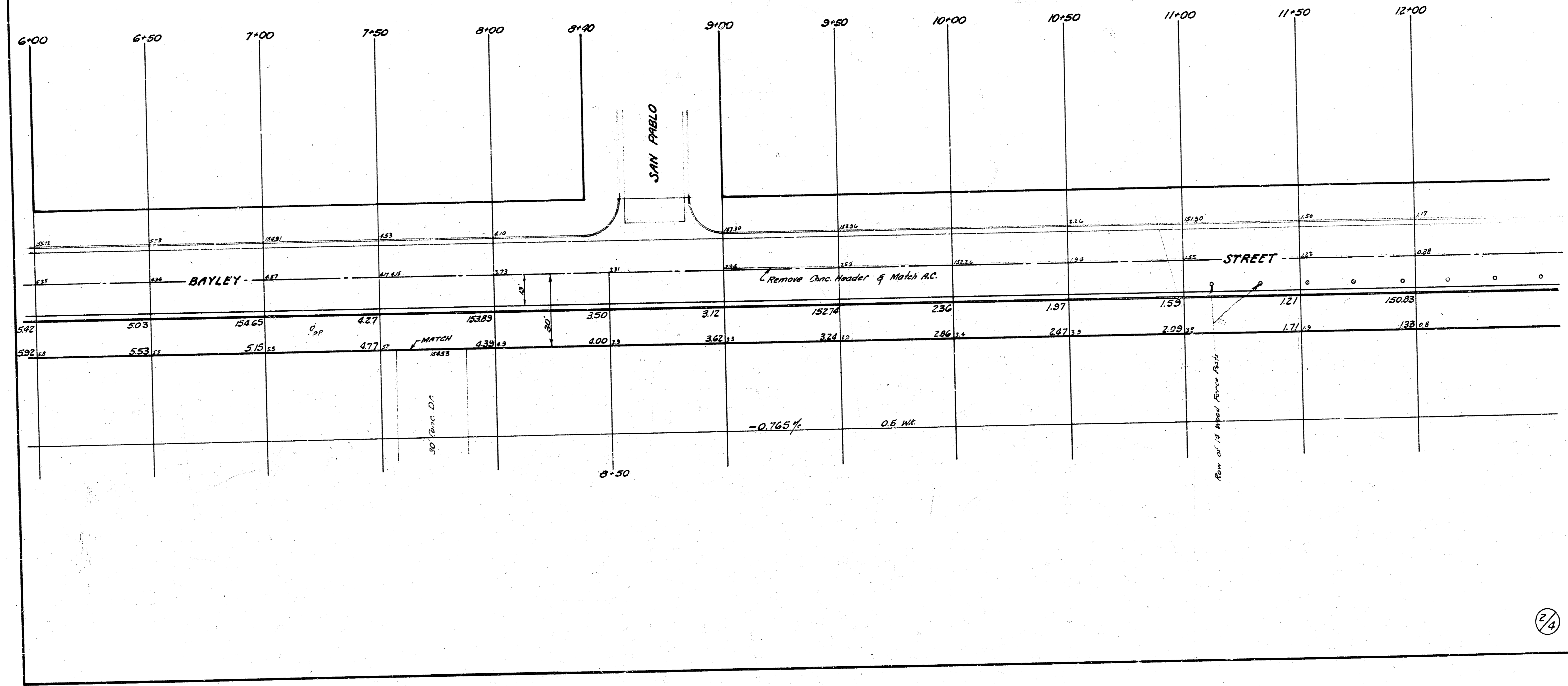


South 1/2 BAYLEY ST.  
 FROM EL. BARLOW STREET  
 TO EL. GOVERNEUR ROAD  
 13'-2'-15" Asph. Conc.  
 B.E. SMITH CITY ENGINEER  
 CITY OF WICHITA, KANSAS  
 Date: June 1966  
 Project No. C 16-16

114

B.M. 15205 60<sup>th</sup> Spike S. side P. Pole  
N.E. Royal Rd. of Bayley

B.M. 15371 60<sup>th</sup> Spike N. side P. Pole  
N.W. Bayley of San Pablo



B.M. 152.70 60' Spike W side P. Pole 50' W  
of 125' N of E. Bayley & Gouverneur

NOTE: Grade hook-up to existing roadway north.

