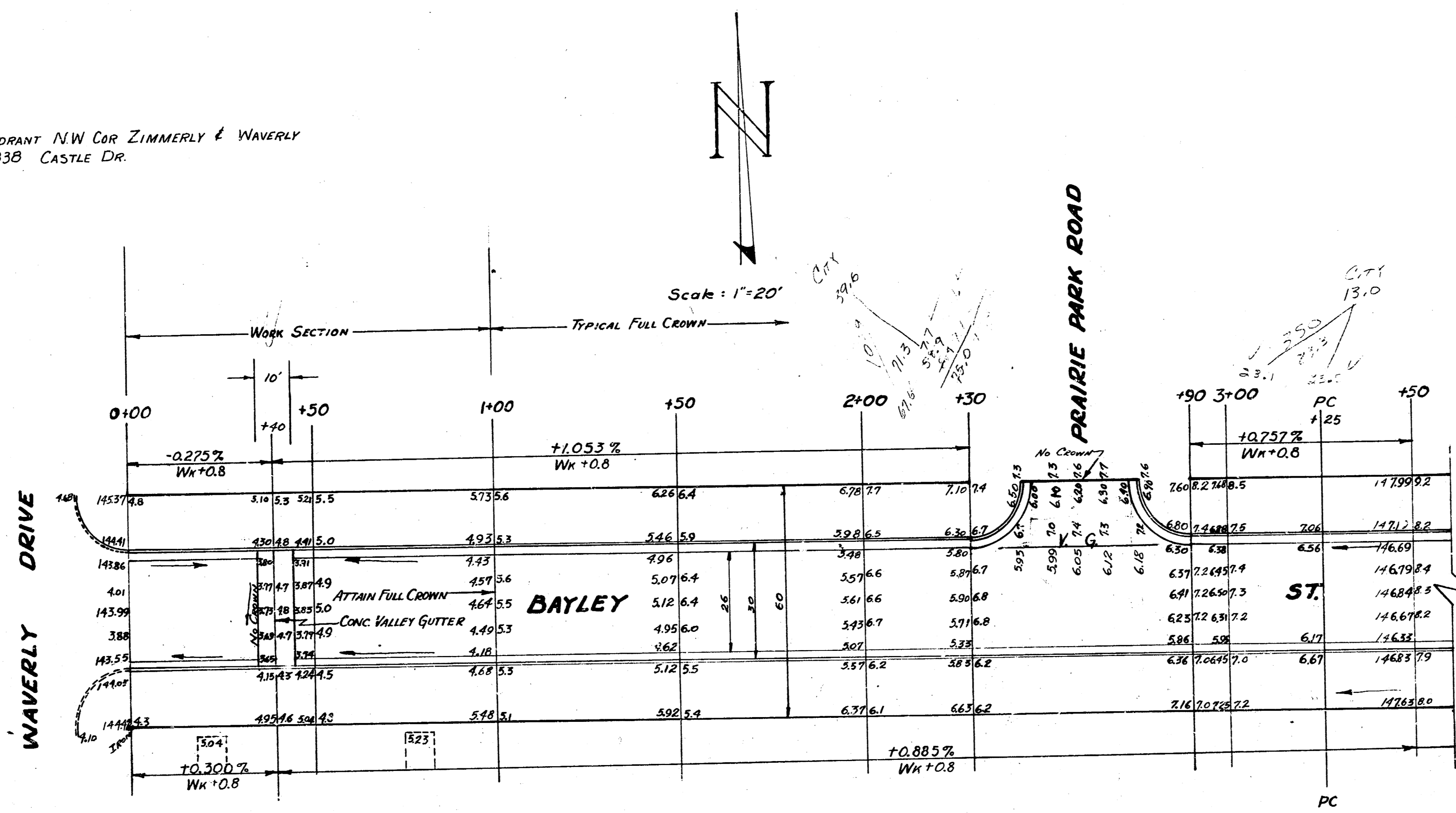


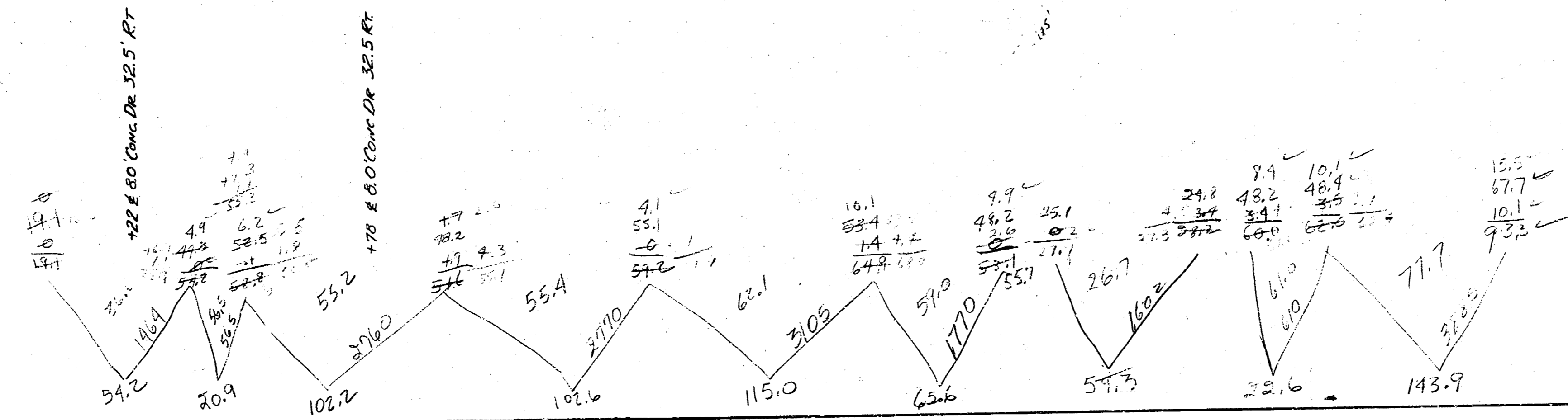
S-5

BM 143.90 1" IN MUELLER FIRE HYDRANT NW COR ZIMMERLY & WAVERLY
 BM 153.50 S.E. COR PORCH HO# 5838 CASTLE DR.



50.0	59.2
13.2	107.1
52.6	122.6
13.2	113.7
57.7	65.4
	22.5
	72.2
	143.9
	150.2
	129.7
	20.0
	143.9
	122.6

1/2



BAYLEY ST.
 EL WAVERLY - WL W FABRIQUE
 26-2-30 AC
 CITY OF WICHITA, KANSAS
 L.K. WHITE CITY ENGINEER
 MAR 52 PROJ. NO. C11-166

