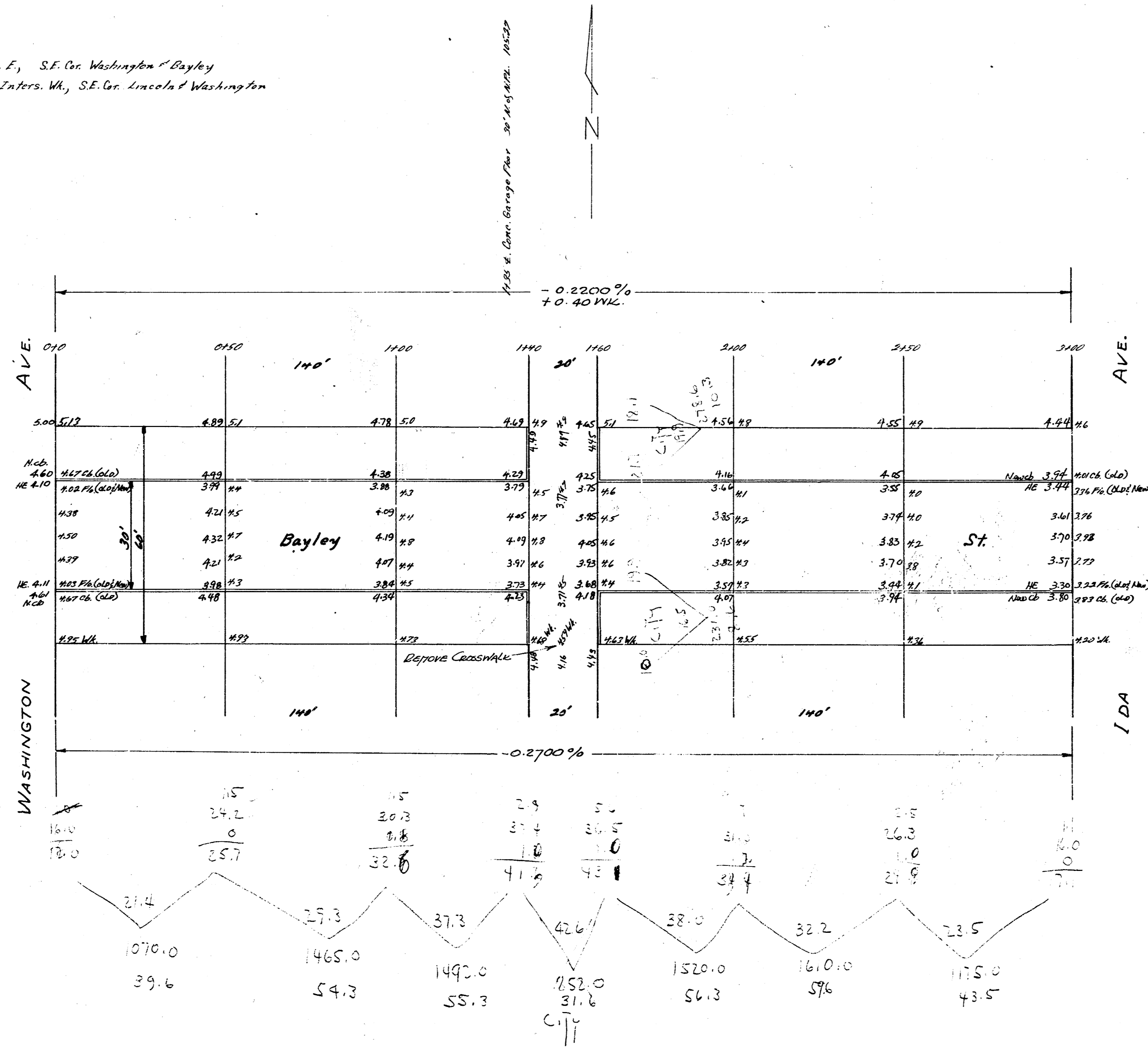


B.M. 124.25, "N in Marker, Bl. of W. E., S.E. Cor. Washington / Bayley  
 B.M. 125.321, "M in M'Dale, N Side Inters. W., S.E. Cor. Lincoln / Washington



**BAYLEY ST.**  
 EL. WASHINGTON AVE. - WILDA AVE.  
 CITY OF WICHITA, KANSAS  
 L. K. WHITE CITY ENGINEER  
 30' CONC. / CB.  
 JUNE 1949 PROJ. No. C.19-102