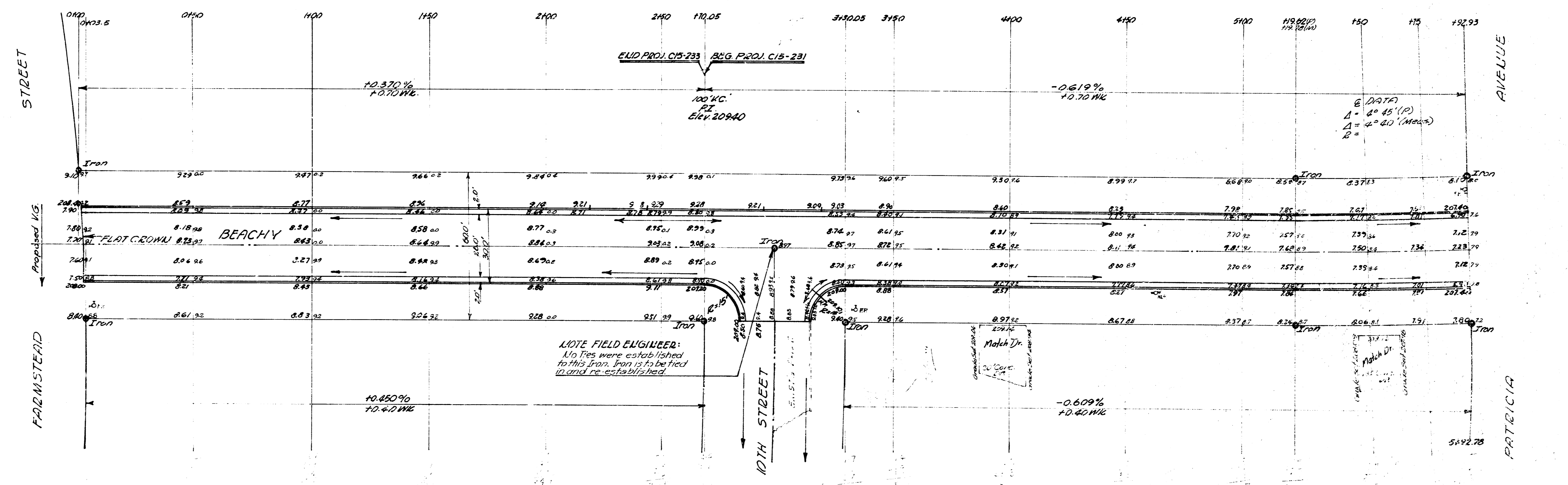
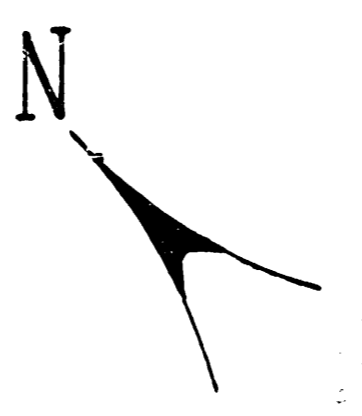


BM - 208.53 NE cor conc. step Ho[#] 1086 Patricia.
 BM - 199.92 R.E. spike NE side H.L.P. SE cor Woodlawn & Beachy
 Stationing on E.



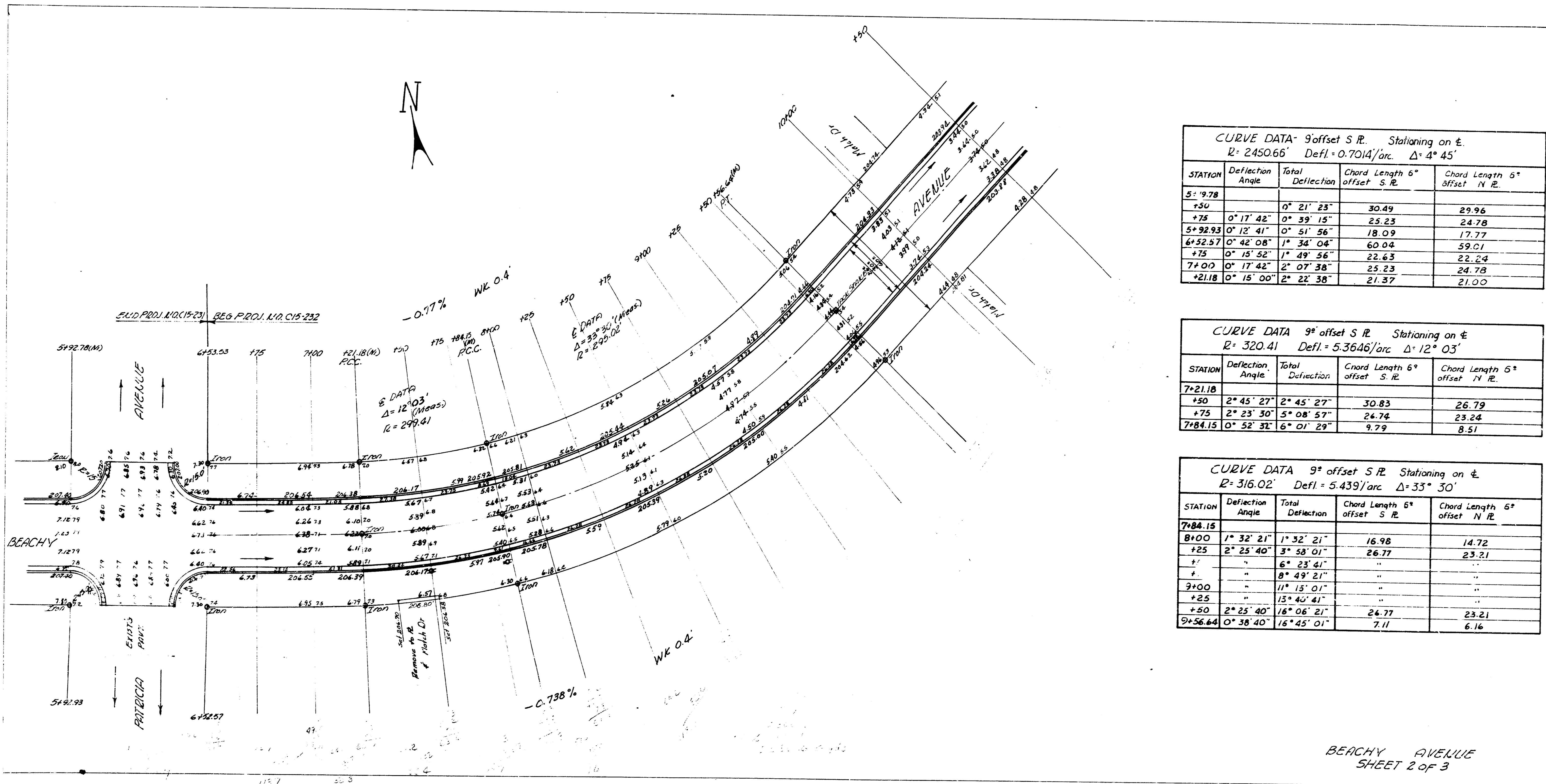
1955
 APR 17 1955

NOTE FIELD ENGINEER:
 No ties were established
 to this from. Ties to be tied
 in and re-established.

BEACHY AVENUE
 W. 10TH ST. - S. FARMSTEAD ST.
 W. 10TH ST. - S. PATRICIA AVE.
 S. PATRICIA AVE. - W. WOODLAWN BLVD.
 26-2-30 R.C.
 CITY OF WICHITA, KANSAS
 B.E. SMITH CITY ENGINEER
 APRIL 1956 PROJ. NO. CB-231-232-233



SHEET 1 OF 3



CURVE DATA 9' offset S.R. Stationing on E.
 $R = 2450.66'$ Defl. = 0.7014'/arc $\Delta = 4^{\circ} 45'$

STATION	Deflection Angle	Total Deflection	Chord Length 6' offset S.R.	Chord Length 6' offset N.R.
5+97.8		0° 21' 23"	30.49	29.96
+75	0° 17' 42"	0° 39' 15"	25.23	24.78
5+92.93	0° 12' 41"	0° 51' 56"	18.09	17.77
6+52.97	0° 42' 08"	1° 34' 04"	60.04	59.01
+75	0° 15' 52"	1° 49' 56"	22.63	22.24
7+00	0° 17' 42"	2° 07' 38"	25.23	24.78
+21.18	0° 15' 00"	2° 22' 38"	21.37	21.00

CURVE DATA 9' offset S.R. Stationing on E.
 $R = 320.41$ Defl. = 5.3646'/arc $\Delta = 12^{\circ} 03'$

STATION	Deflection Angle	Total Deflection	Chord Length 6' offset S.R.	Chord Length 6' offset N.R.
7+21.18		2° 45' 27"	30.83	26.79
+50	2° 45' 27"	2° 45' 27"	30.83	26.79
+75	2° 23' 30"	5° 08' 57"	24.74	23.24
7+84.15	0° 52' 32"	6° 01' 29"	9.79	8.51

CURVE DATA 9' offset S.R. Stationing on E.
 $R = 316.02$ Defl. = 5.439'/arc $\Delta = 33^{\circ} 30'$

STATION	Deflection Angle	Total Deflection	Chord Length 6' offset S.R.	Chord Length 6' offset N.R.
7+84.15		1° 32' 21"	16.98	14.72
8+00	1° 32' 21"	1° 32' 21"	16.98	14.72
+25	2° 25' 40"	3° 58' 01"	26.77	23.21
+	"	6° 23' 41"	"	"
+	"	8° 49' 21"	"	"
9+00	"	11° 15' 01"	"	"
+25	"	13° 40' 41"	"	"
+50	2° 25' 40"	16° 06' 21"	26.77	23.21
9+56.64	0° 38' 40"	16° 45' 01"	7.11	6.16

BEACHY AVENUE
 SHEET 2 of 3

