

TYPICAL SECTION

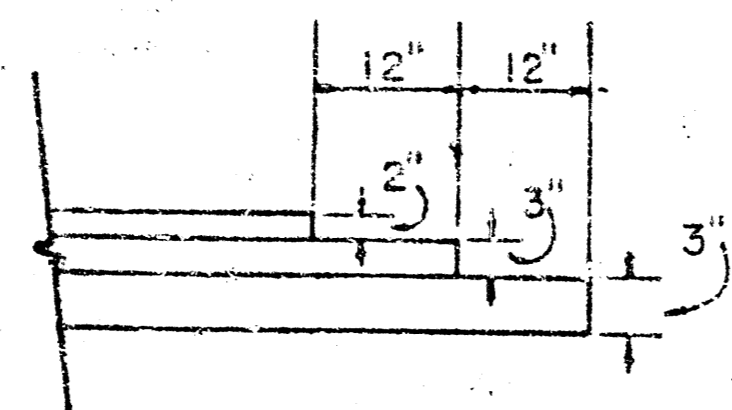
35' ASPHALTIC CONCRETE PAVEMENT WITH BITUMINOUS BASE

*The A.C. Pavement between the comb curb & gutter shall be paid as Sq.Yds. 8" A.C. Pavement (6" Bituminous Base).
The Bituminous Base under the comb curb & gutter shall be paid as Sq.Yds. 3" Bituminous Base.*

A TACK COAT OF EMULSIFIED ASPHALT (SS-1H) SHALL BE APPLIED AT AN APPROXIMATE RATE 0.05 GALLONS PER SQ YD BETWEEN LIFTS OF ASPHALTIC MATERIALS WHEN ORDERED BY THE ENGINEER. TACK COAT WILL NOT BE PAID FOR DIRECTLY AND SHALL BE CONSIDERED AS SUBSIDIARY TO PRICE BID FOR ASPHALTIC PAVEMENT.

BITUMINOUS BASE AND ASPHALTIC CONCRETE WEARING SURFACE SHALL BE PLACED WITH A LAYDOWN MACHINE HAVING AUTOMATIC ELECTRONIC CONTROLS FOR CROWN AND GRADE. CONSTRUCTION JOINTS IN EACH LIFT SHALL BE STAGGERED A MINIMUM DISTANCE OF 1' WITH JOINTS IN PRECEDING LIFTS AND PLACED SUCH THAT A JOINT WILL BE CONSTRUCTED ON THE CENTERLINE IN THE TOP LIFT.

DETAIL OF TRANSVERSE CONSTRUCTION JOINTS



TRANSVERSE CONSTRUCTION JOINTS SHALL BE CONSTRUCTED IN FLEXIBLE BASE PAVEMENTS AT LOCATIONS WHERE PAVEMENT TEMPORARILY ENDS TO FACILITATE FUTURE PAVEMENT CONSTRUCTION AS SHOWN BY DETAIL. THE COST OF CONSTRUCTING THE TRANSVERSE CONSTRUCTION JOINTS SHALL NOT BE MEASURED OR PAID FOR DIRECTLY BUT SHALL BE INCLUDED IN THE BID PRICE FOR SQUARE YARDS OF ASPHALTIC CONCRETE PAVEMENT.

CITY OF WICHITA KANSAS

DEPARTMENT of PUBLIC WORKS - Engineering
Division.

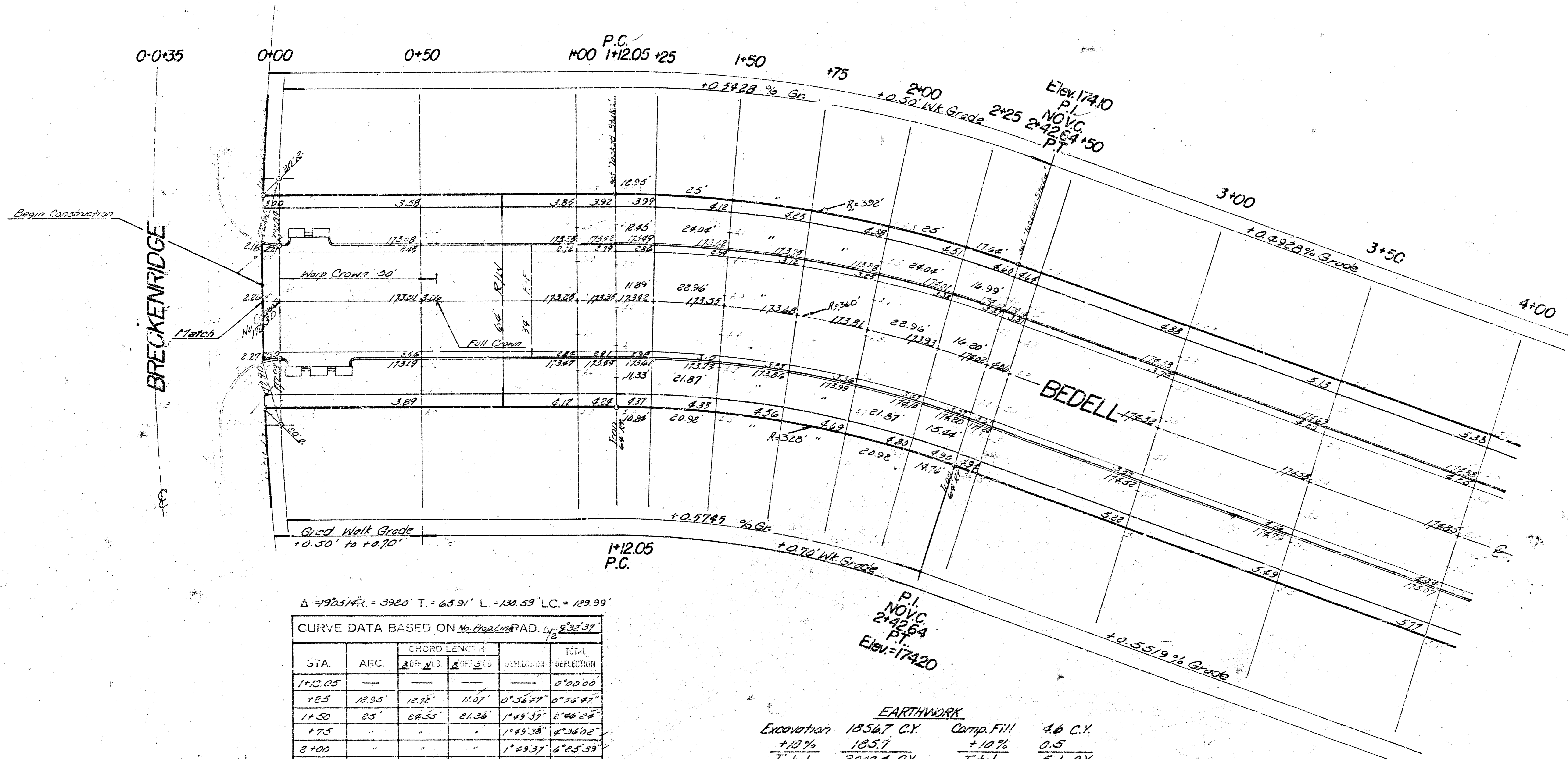
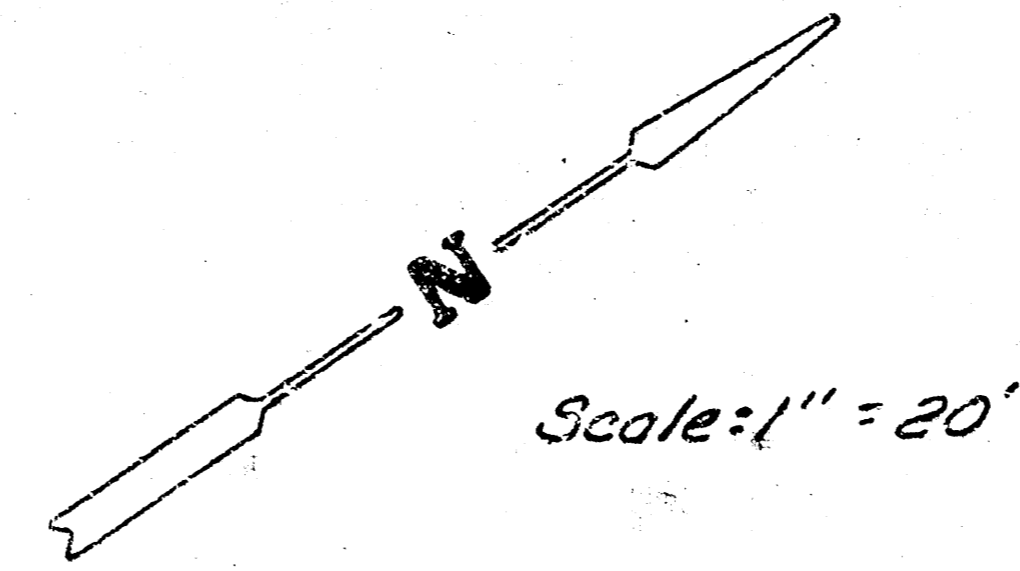
R. W. LINN

CITY ENGINEER

DATE _____

Proj No. _____

B.M. 13460 R.R. Spike, Top of 12" Guard Post, E.S. Webb Rd. and 100' N. of N.L. of Bedell.
 B.M. 17771 "Cut" in Top of So. Co. of Bedell at W.L. Laurel.
 Base Line = North Prop. Line of Bedell.



$\Delta = 99.85^\circ$ AR = 392.0' T = 65.91' L = 130.59' LC = 129.99'

CURVE DATA BASED ON $M = 1.75$ RAD. $L = 2^\circ 32' 37''$

STA.	ARC.	CHORD LENGTH		DEFLECTION	
		20 FT. M.S.	20 FT. S.T.	DEFLECTION	TOTAL DEFLECTION
1+12.05	—	—	—	—	0°00'00"
+25	12.95'	12.72'	11.01'	0°36'47"	0°36'47"
1+50	25'	24.55'	21.38'	1°49'37"	2°16'24"
+75	"	"	"	1°49'38"	4°06'02"
2+00	"	"	"	1°29'37"	5°35'39"
+25	"	"	"	1°49'37"	7°15'16"
2+42.64	17.64'	17.32'	15.07'	1°17'21"	8°32'37"

Def. % = 4.384881 M/ft.

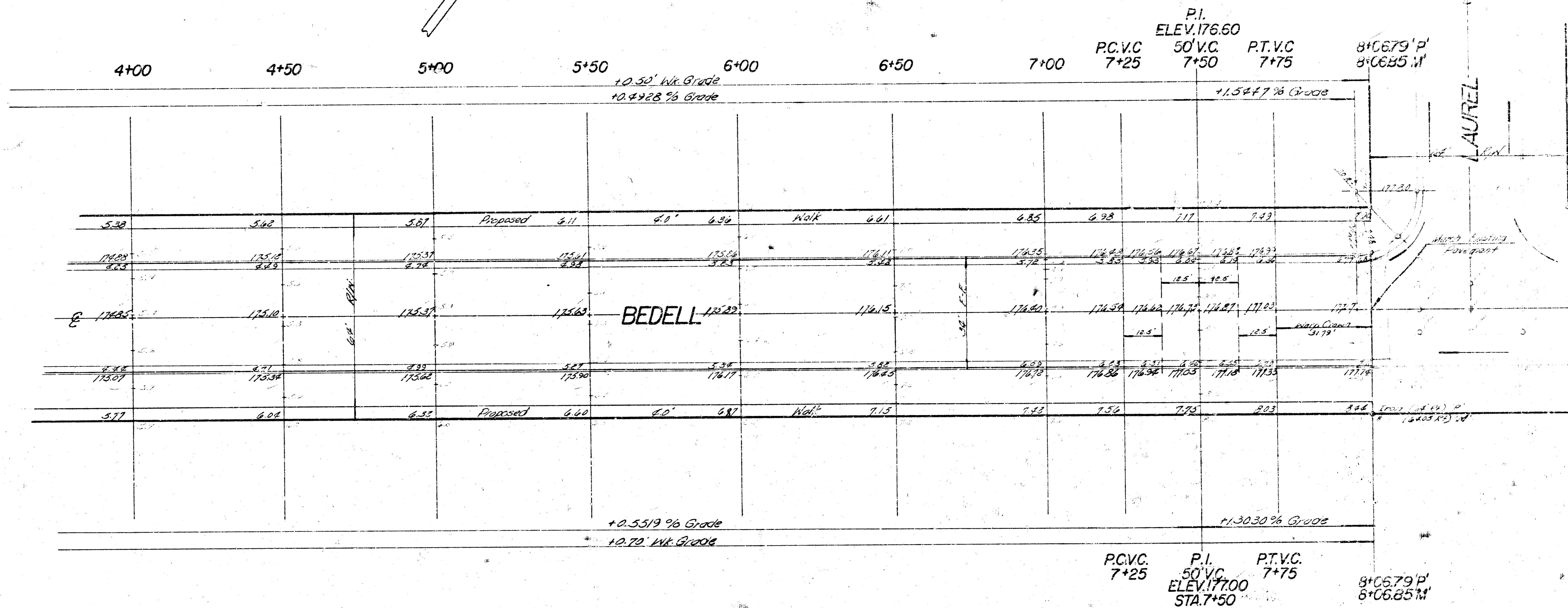
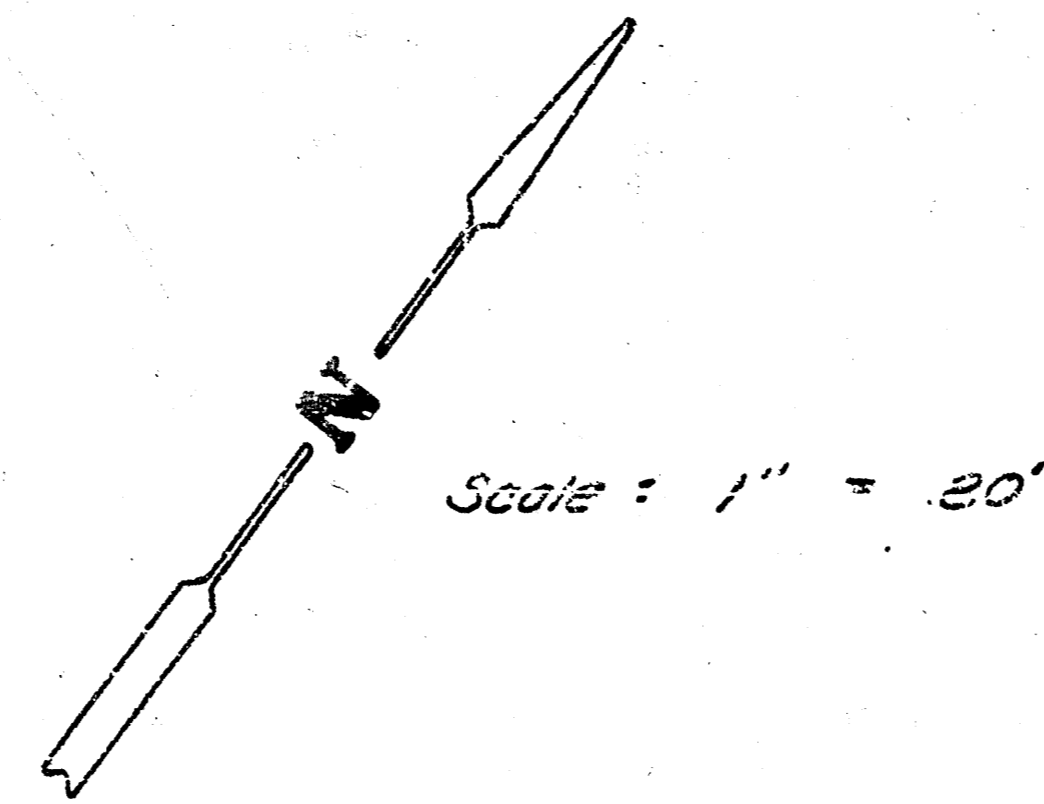
EARTHWORK

Excavation	1856.7 C.Y.	Comp. Fill	4.6 C.Y.
+10%	185.7	+10%	0.5
Total	2042.4 C.Y.	Total	5.1 C.Y.

Manipulation: 3873.051

BEDELL
 E.L. Breckenridge to W.L. Laurel
 Proj. No. DAKS5/4065

B.M. 18460 - R.R. Spike, Top 12' Guard Post, E.S. Webb Rd & 100' N. of N.L. Bedell.
 B.M. 17771 - "□" Cut in Top of So. Curb of Bedell & W.L. Laurel.
 Base Line = North Property Line of Bedell.



BEDELL
 E.L. Breckenridge to W.L. Laurel
 Proj. No. DAKS574065