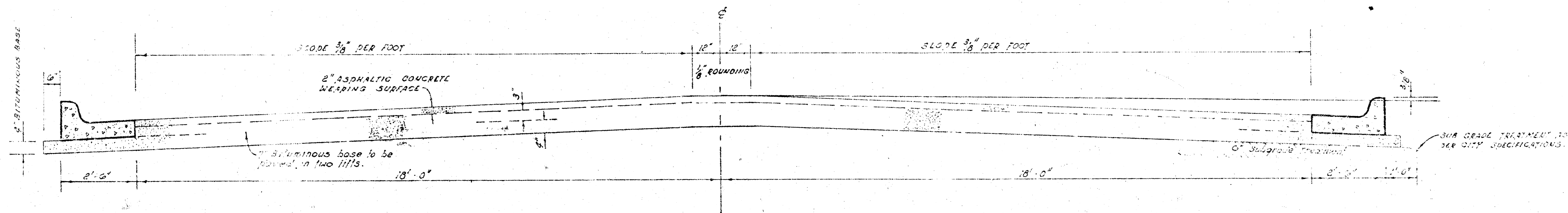


BEDELL
N. L. Harry—S. L. Breckenridge
Proj. No. DAKS574064



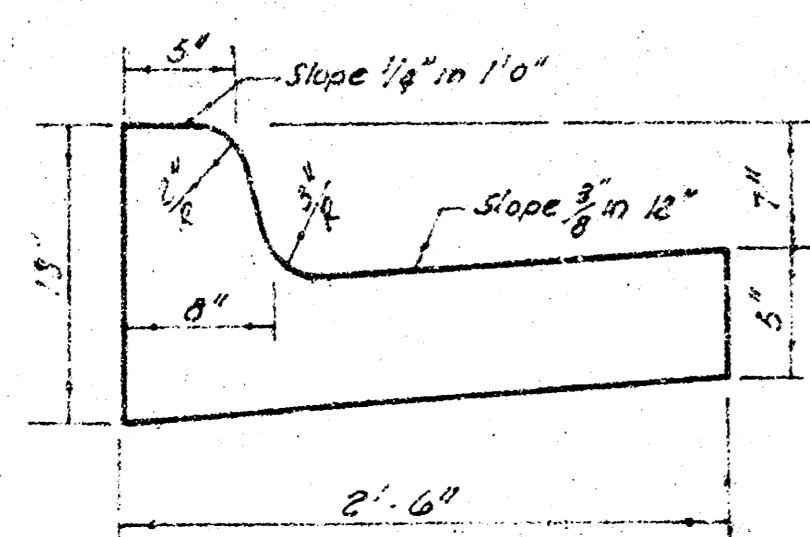
TYPICAL SECTION

41' ASPHALTIC CONCRETE PAVEMENT WITH BITUMINOUS BASE

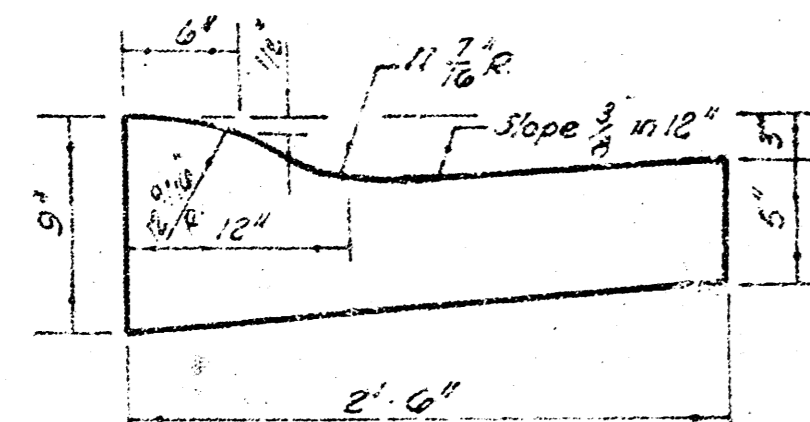
A TACK COAT OF EMULSIFIED ASPHALT (SS-1H) SHALL BE APPLIED AT AN APPROXIMATE RATE 0.05 GALLONS PER SQ YD BETWEEN LIFTS OF ASPHALTIC MATERIALS WHEN ORDERED BY THE ENGINEER. TACK COAT WILL NOT BE PAID FOR DIRECTLY AND SHALL BE CONSIDERED AS SUBSIDIARY TO PRICE BID FOR ASPHALTIC PAVEMENT. BITUMINOUS BASE AND ASPHALTIC CONCRETE WEARING SURFACE SHALL BE PLACED WITH A LAYDOWN MACHINE HAVING AUTOMATIC ELECTRONIC CONTROLS FOR CROWN AND GRADE. CONSTRUCTION JOINTS IN EACH LIFT SHALL BE STAGGERED A MINIMUM DISTANCE OF 1' WITH JOINTS IN PRECEDING LIFTS AND SUCH THAT A JOINT WILL BE CONSTRUCTED ON THE PAVEMENT CENTERLINE IN THE TOP LIFT.

The A.C. pavement between the comb curb & gutter shall be paid as 39 yds 3" A.C. pavement (1" Bituminous Base). The Bituminous Base under the comb curb & gutter shall be paid as 59 yds 4" Bituminous Base.

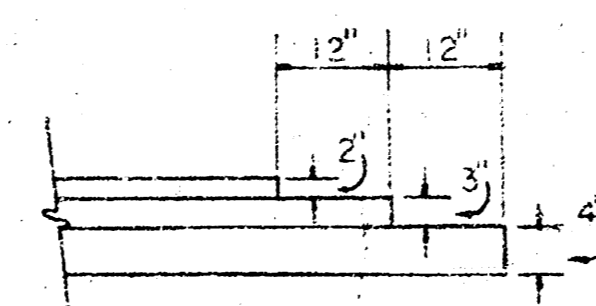
COMBINED CURB & GUTTER



ROLL TYPE CURB & GUTTER

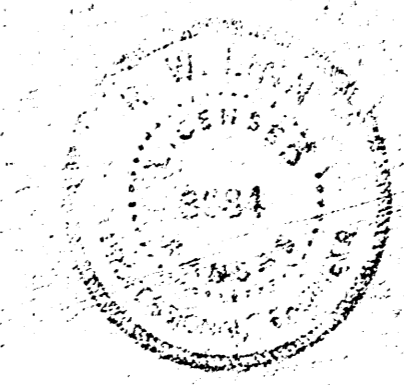


DETAIL OF TRANSVERSE CONSTRUCTION JOINTS



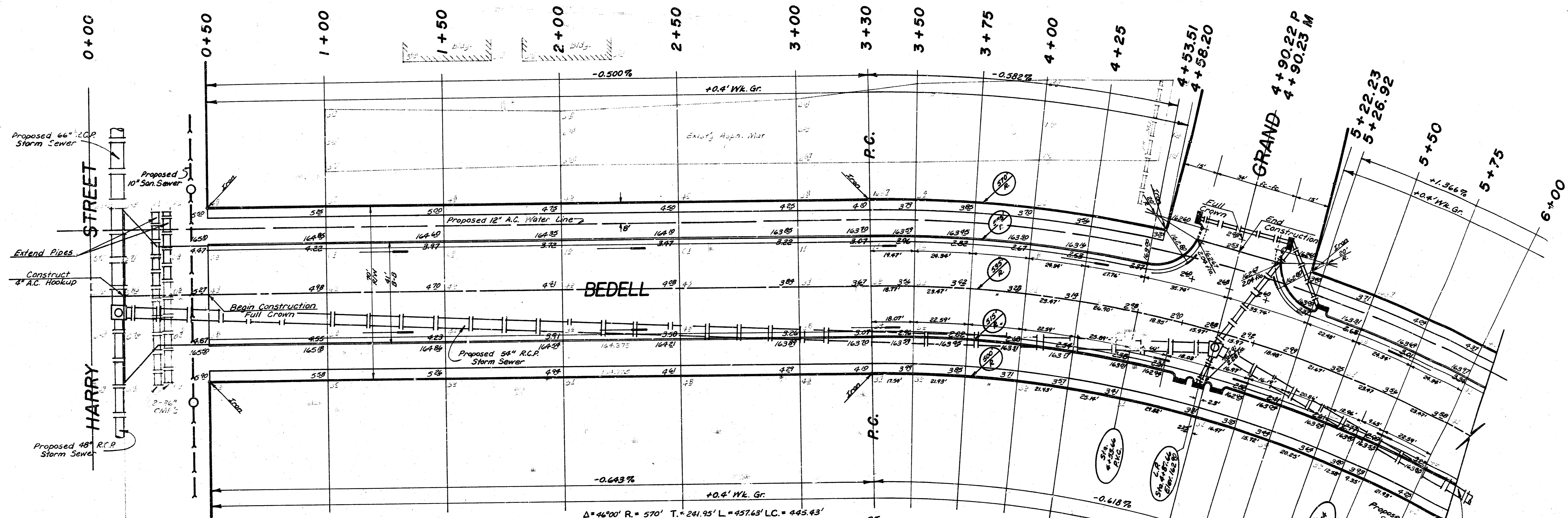
TRANSVERSE CONSTRUCTION JOINTS SHALL BE CONSTRUCTED IN FLEXIBLE BASE PAVEMENTS AT LOCATIONS WHERE PAVEMENT TEMPORARILY ENDS TO FACILITATE FUTURE PAVEMENT CONSTRUCTION AS SHOWN BY DETAIL. THE COST OF CONSTRUCTING THE TRANSVERSE CONSTRUCTION JOINTS SHALL NOT BE MEASURED OR PAID FOR DIRECTLY BUT SHALL BE INCLUDED IN THE BID PRICE FOR SQUARE YARDS OF ASPHALTIC CONCRETE PAVEMENT.

1/6



CITY OF WICHITA, KANSAS
 DEPARTMENT of PUBLIC WORKS - Engineering Division.
 R. W. LINN CITY ENGINEER
 DATE May, 1916 Proj. No. DAKS574064

B.M. = 167.95 R.R. Spike N.S. P Pole N.S. Harry, 25' E. E.L. Bedell
 B.M. = 161.82 City Std. 42' W. & 48' S. of 1/4 Sec. Cor., 1/2 Mi. E. of Rock Rd. on Harry



$\Delta = 46^{\circ}00'$ R = 570' T = 241.95' L = 457.63' LC = 445.43'

CURVE DATA BASED ON W. 2 RAD. $N_2 29^{\circ}00'$

STA.	ARC.	CHORD LENGTH	DEFLECTION	TOTAL
		B' OFFICER	B' OFFICER	DEFLECTION
3+30				00'00" 0'00"00"
3+50	20.00'	19.75'	17.91'	11'00"00" 1'00"00"
3+75	25.00'	24.61'	22.72'	17'30"00" 2'13"53"
4+00				17'30"00" 3'17"07"
4+25	25.00'	24.61'	22.72'	17'30"00" 4'40"59"
4+50	20.00'	19.75'	17.91'	05'24"00" 6'04"52"
4+75	25.00'	24.61'	22.72'	11'34"00" 7'28"45"
5+00	30.00'	31.61'	28.57'	15'34"00" 8'52"37"
5+25	25.00'	24.61'	22.72'	17'30"00" 10'16"30"
5+50	20.00'	19.75'	17.91'	12'18"00" 11'40"22"
5+75	25.00'	24.61'	22.72'	17'30"00" 13'04"15"
6+00				17'30"00" 14'28"07"
6+25				12'18"00" 15'51"59"
6+50				17'30"00" 17'15"52"
6+75				12'18"00" 18'39"44"
7+00				17'30"00" 20'03"37"
7+25				12'18"00" 21'27"29"
7+50	25.00'	24.61'	22.72'	15'34"00" 22'51"21"
7+75	20.00'	19.75'	17.91'	05'24"00" 24'15"14"

Defl./ft. = 3.01556737 Min.

EARTHWORK:

	Property	City
Excavation	1570.4 C.Y.	128.4 C.Y.
+10%	1727.1 C.Y.	141.2 C.Y.
Total	1727.7 C.Y.	141.2 C.Y.
Comp. Fill	433.4 C.Y.	213.6 C.Y.
+10%	476.7 C.Y.	235.0 C.Y.
Total	476.7 C.Y.	235.0 C.Y.
Manipulation = 5193.4 S.Y.		

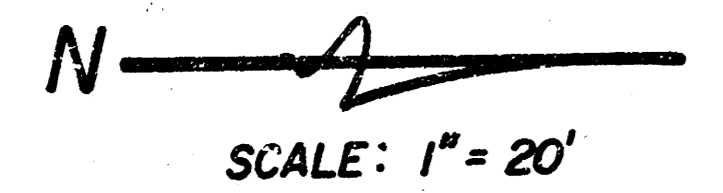
Note to Contractor:
 Contact K.G.F.E. and Bell Telephone Co. for information regarding locations of Underground Utilities.

NOTE TO FIELD ENGINEER & CONTRACTOR
 Note pointing and clear right-of-way for proposed sewerline. Complete fill in driveway area. TO BE CONSTRUCTED BY "OTHERS".

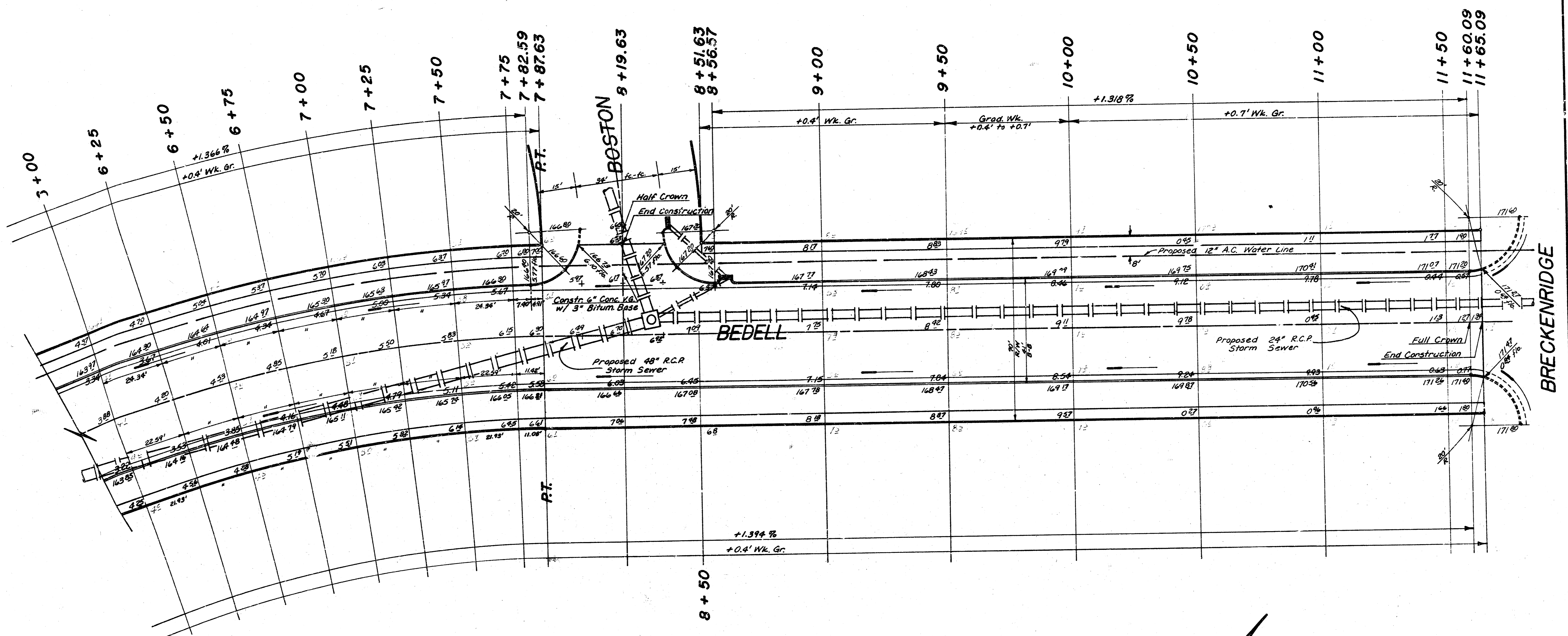
SUB-GRADE
 TYPE OF SUB-GRADE TREATMENT SHALL BE DETERMINED BY THE FIELD ENGINEER. SUB-GRADE TREATMENT MAY CONSIST OF LIME TREATMENT, CEMENT TREATMENT, SUB-GRADE MODIFICATION, OR ANY COMBINATION OF THESE.

NOTE: Drainage & Pavement Contractor to coordinate work.

is West of Bedell



BEDELL
 N.L. Harry St. to S.L. Breckenridge
 41' B-B 9" A.C. Pavt. w/ Comb. C.&G.
CITY of WICHITA, KANSAS
 R.W. Linn — City Engineer
 Proj. No. DAKS574064
 Date _____



N
SCALE: 1" = 20'

3/3