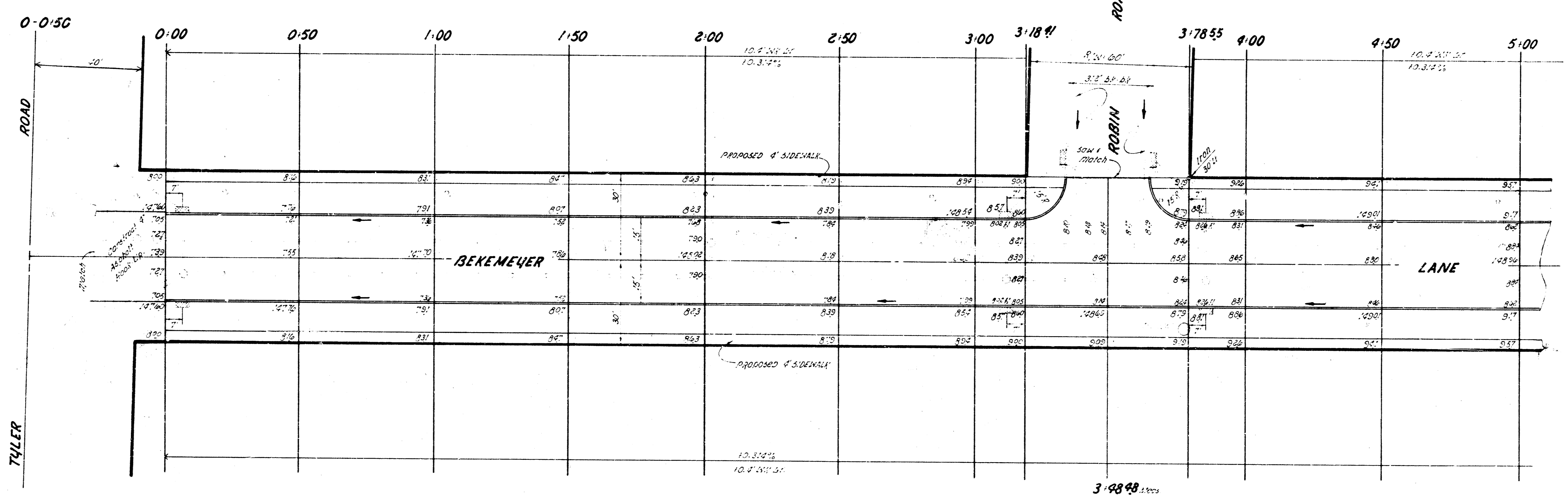
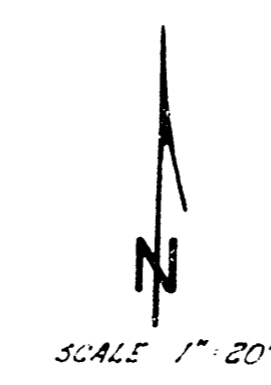


S.M. 140-48 Slip Bench E.S. R.P. N.S. TYLER - N.L. BEKEMEYER

Base Line - Center Line



-STEEL-
 NOTE: See Sheet 3 for steel
 details on South & Bekemeyer
 0+00 to 3+55

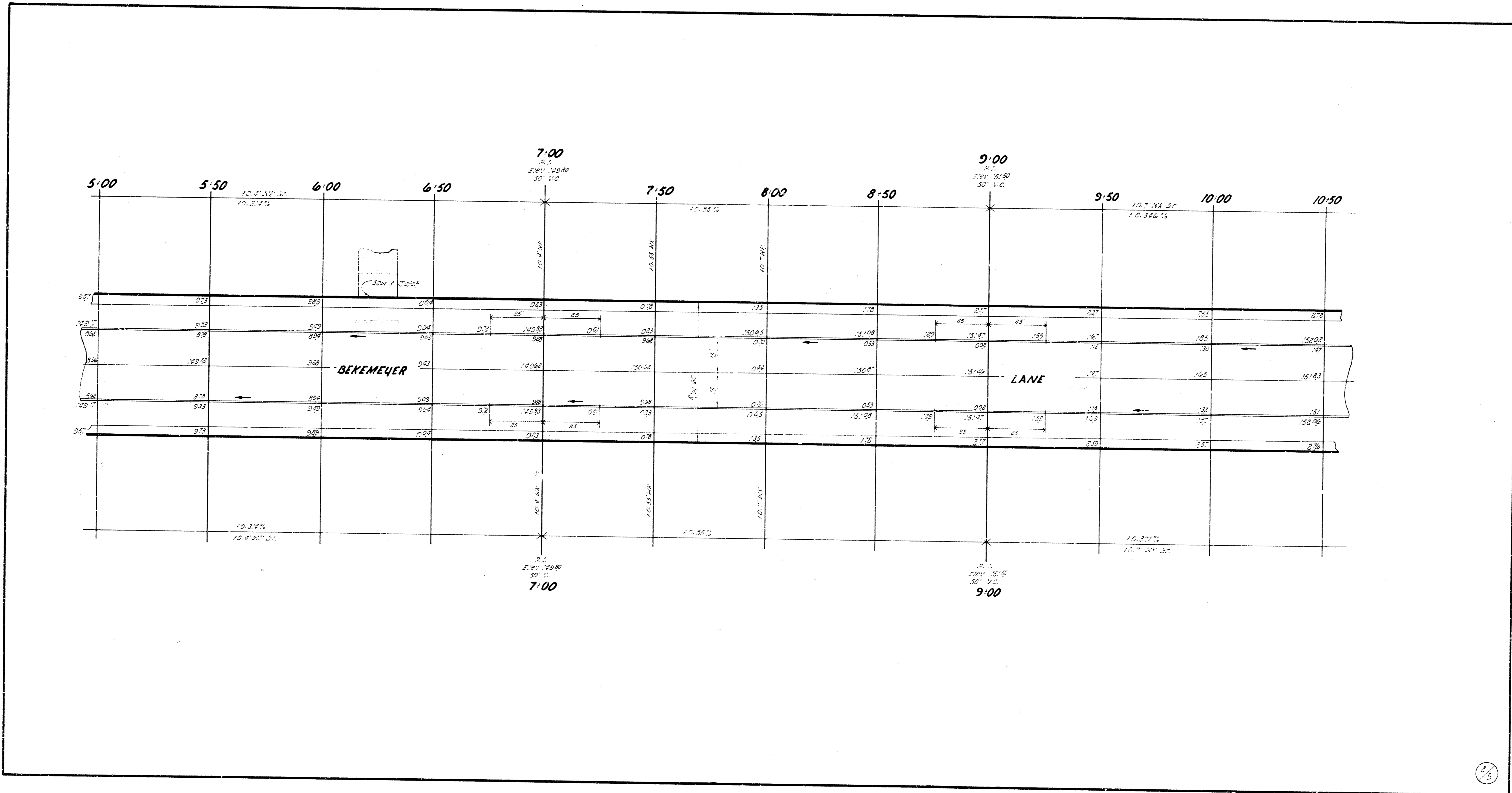
-SIDEWALK-
 Grade, Paving and Clear Drain
 Way for proposed sidewalk to meet
 sidewalk on adjacent street. Sidewalk
 to be constructed by OTHERS.

EARTHWORK		CITY	
Excavation	Gravel Fill	Excavation	Gravel Fill
0.127 cu yds	43.0 cu yds	16.7 cu yds	
10.875 cu yds	122.7 cu yds	12.1 cu yds	
2,334.4 cu lbs	47.3 cu lbs	181.9 cu lbs	

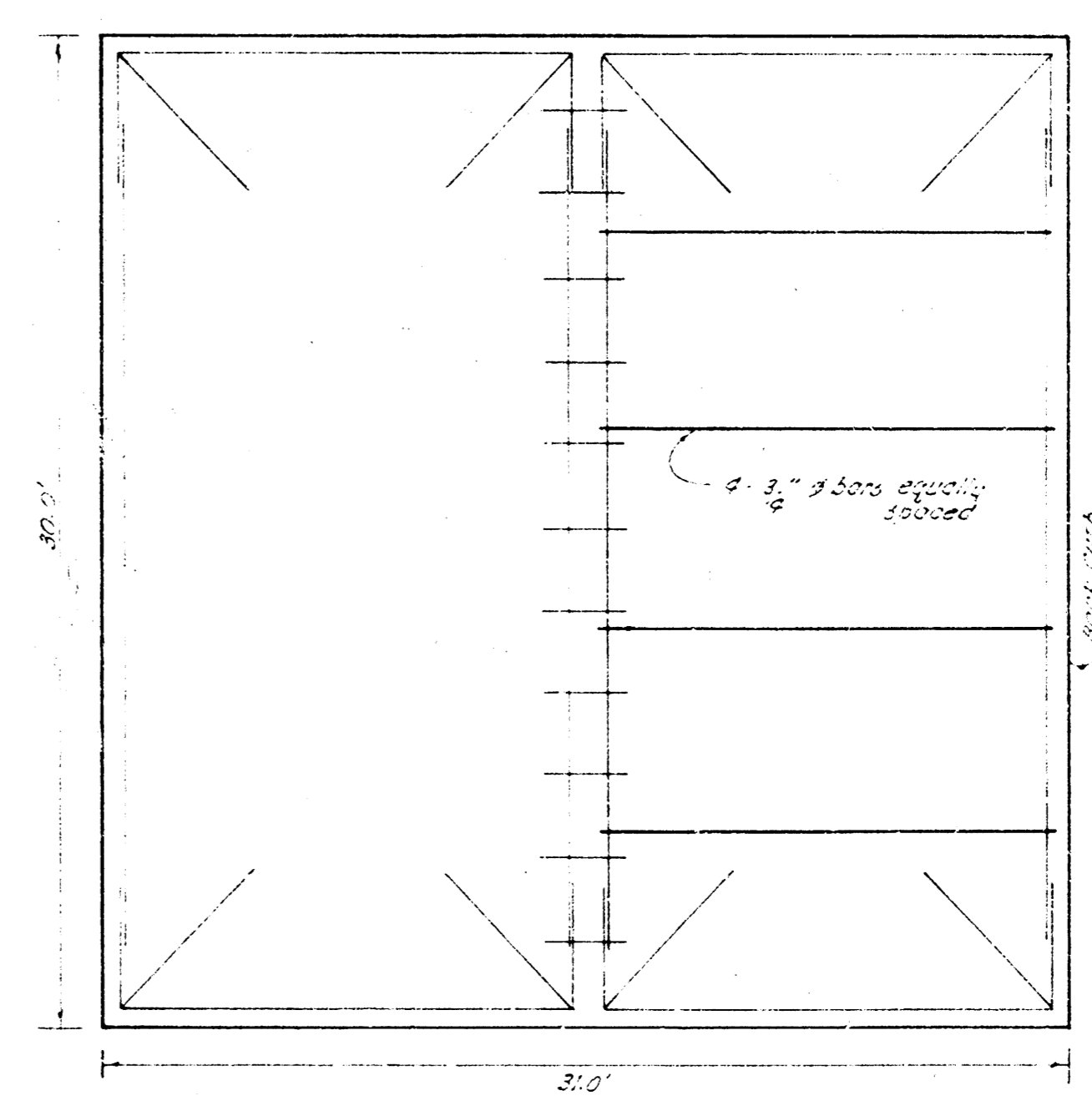
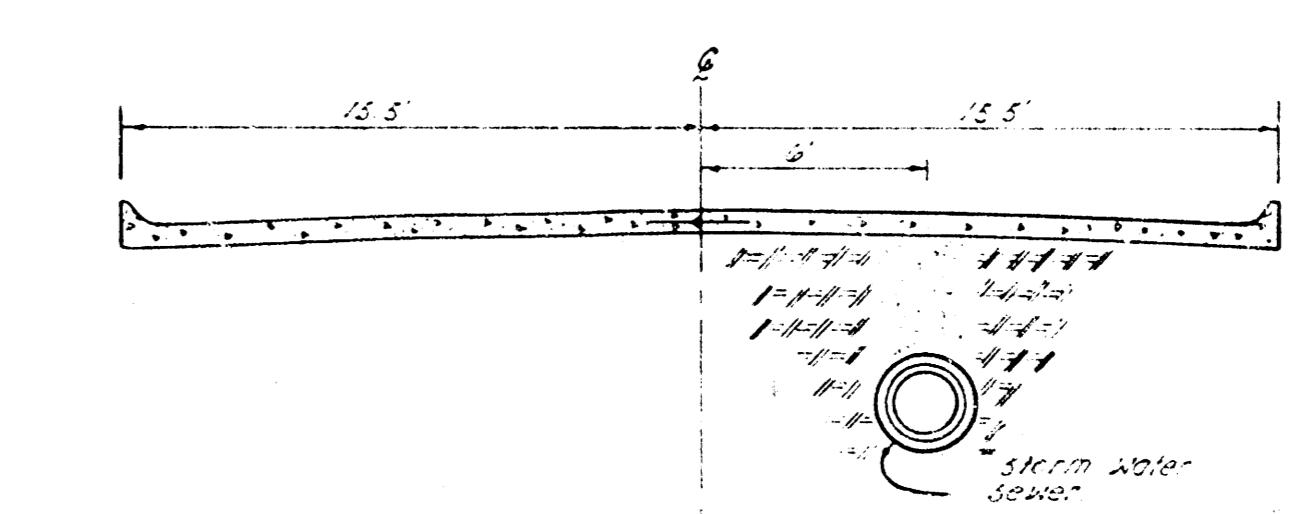
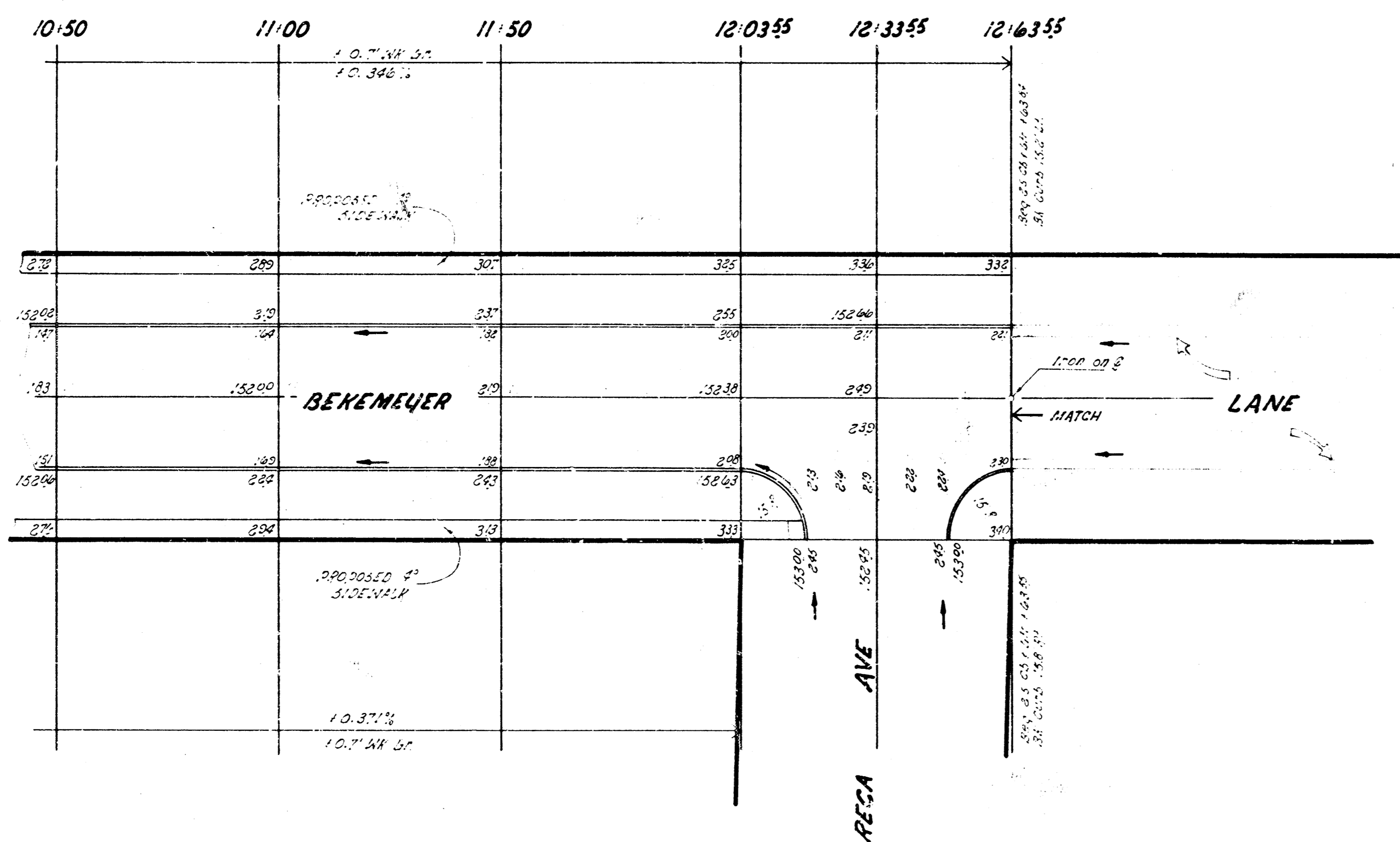
BEKEMEYER LANE
 E.L. TYLER ROAD to E.L. REYN AVENUE
 30" CONCRETE and CURB
CITY OF WICHITA, KANSAS
 S.B. SMITH CITY ENGINEER
 DATE: 3/21/1938 PROJ. NO. 140-48



10.347
10.347



3.11.12280 IS IN SPOTTERS Top 25 1/2" of 21 and Radius
 11.6.384 CHUYER 11.2.1987 10.



STEEL PATTERN TO BE USED FOR SOUTH HALF
 BEKEMEYER BETWEEN 0+00 and 3+85. Same
 as Project to carry Typical Steel Pattern