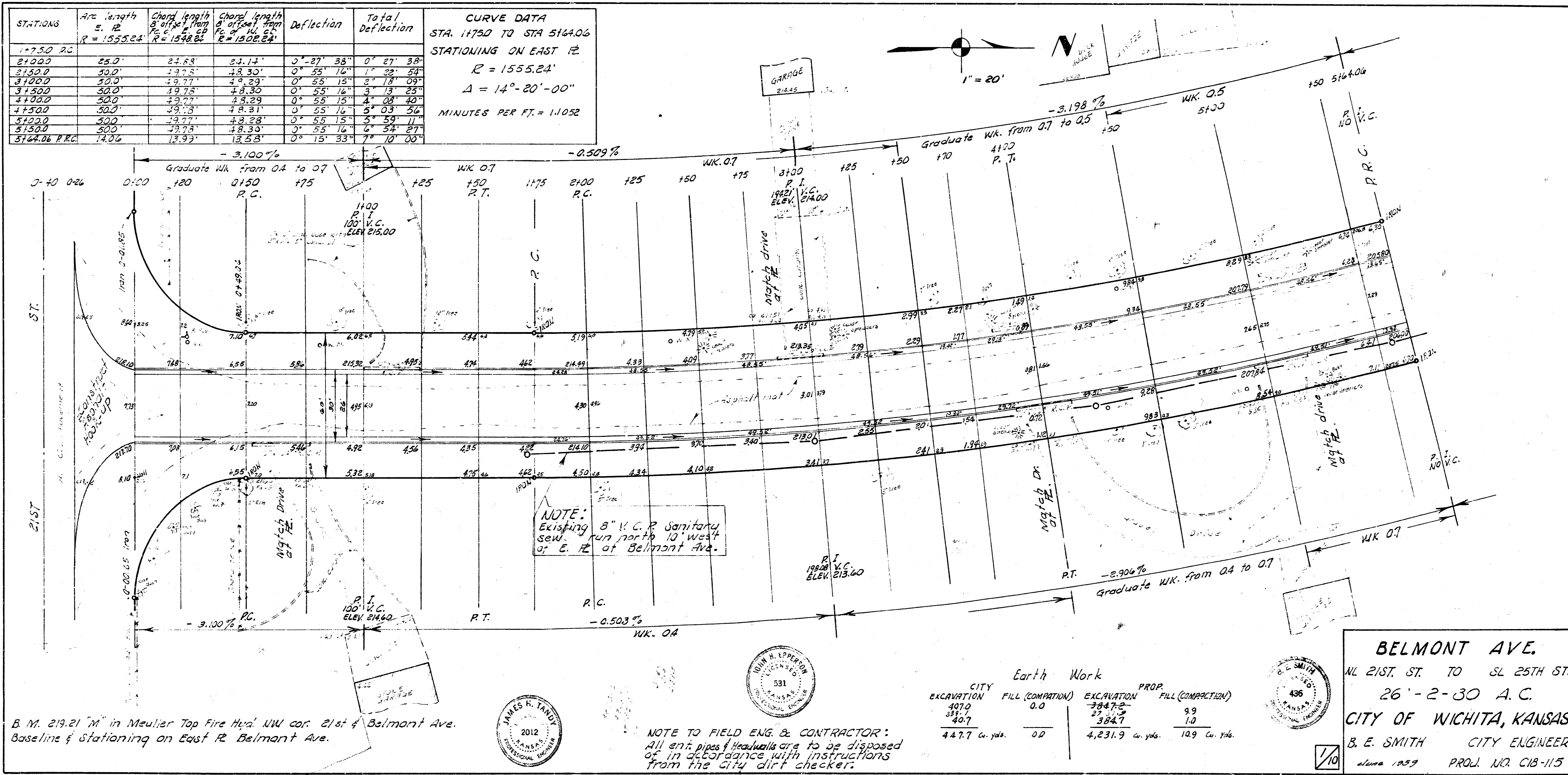


STATIONS	Arc Length S. R.	Chord length B' offset from P.C. to P.T.	Chord length B' offset from P.T. to P.C.	Deflection	Total Deflection
1+750 P.C.					
2+000	25.0'	24.63'	24.17'	0° 27' 38"	0° 27' 38"
2+250	50.0'	49.26'	48.34'	0° 55' 16"	1° 22' 54"
2+500	75.0'	73.89'	72.51'	1° 22' 54"	2° 45' 48"
2+750	100.0'	98.52'	96.04'	1° 50' 32"	4° 06' 20"
3+000	125.0'	123.15'	119.67'	2° 18' 10"	6° 24' 30"
3+250	150.0'	147.78'	143.30'	2° 45' 48"	8° 49' 18"
3+500	175.0'	172.41'	166.93'	3° 13' 26"	11° 02' 44"
3+750	200.0'	197.04'	190.56'	3° 41' 04"	13° 15' 30"
4+000	225.0'	221.67'	214.19'	4° 08' 42"	15° 28' 12"
4+250	250.0'	246.30'	237.82'	4° 36' 20"	17° 40' 58"
4+500	275.0'	270.93'	261.45'	5° 03' 58"	19° 53' 44"
4+750	300.0'	295.56'	285.08'	5° 31' 36"	22° 06' 30"
5+000	325.0'	320.19'	308.71'	5° 59' 14"	24° 19' 16"
5+250	350.0'	344.82'	332.34'	6° 26' 52"	26° 32' 02"
5+500	375.0'	369.45'	355.97'	6° 54' 30"	28° 44' 48"
5+750	400.0'	394.08'	379.60'	7° 22' 08"	30° 57' 34"
6+000 P.T.	425.0'	418.71'	403.23'	7° 49' 46"	33° 10' 20"

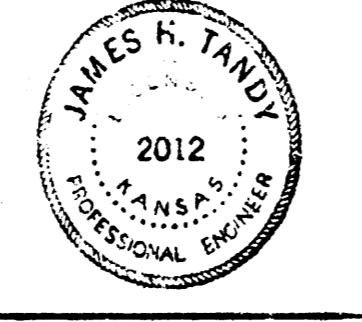
CURVE DATA
 STA. 1+750 TO STA 5+400
 STATIONING ON EAST R.
 R = 1555.24'
 $\Delta = 14^\circ - 20' - 00''$
 MINUTES PER FT. = 1.1052



By: W. G. GENTZ, BUREAU OF
 Plan L.S. 11/11/11
 Lic. 11/11/11

NOTE:
 Existing 8" V.C.P. Sanitary
 Sewer runs north 10' west
 of E. R. of Belmont Ave.

B. M. 219.21 "M" in Mueller Top Fire Hval NW cor. 21st & Belmont Ave.
 Baseline & Stationing on East R. Belmont Ave.



Earth Work

CITY	EXCAVATION	FILL (COMPACTION)	PROP.	EXCAVATION	FILL (COMPACTION)
	407.0	0.0		384.7	9.9
	387.7			384.7	1.0
	447.7 Cu. yds.	0.0		4,231.9 Cu. yds.	10.9 Cu. yds.

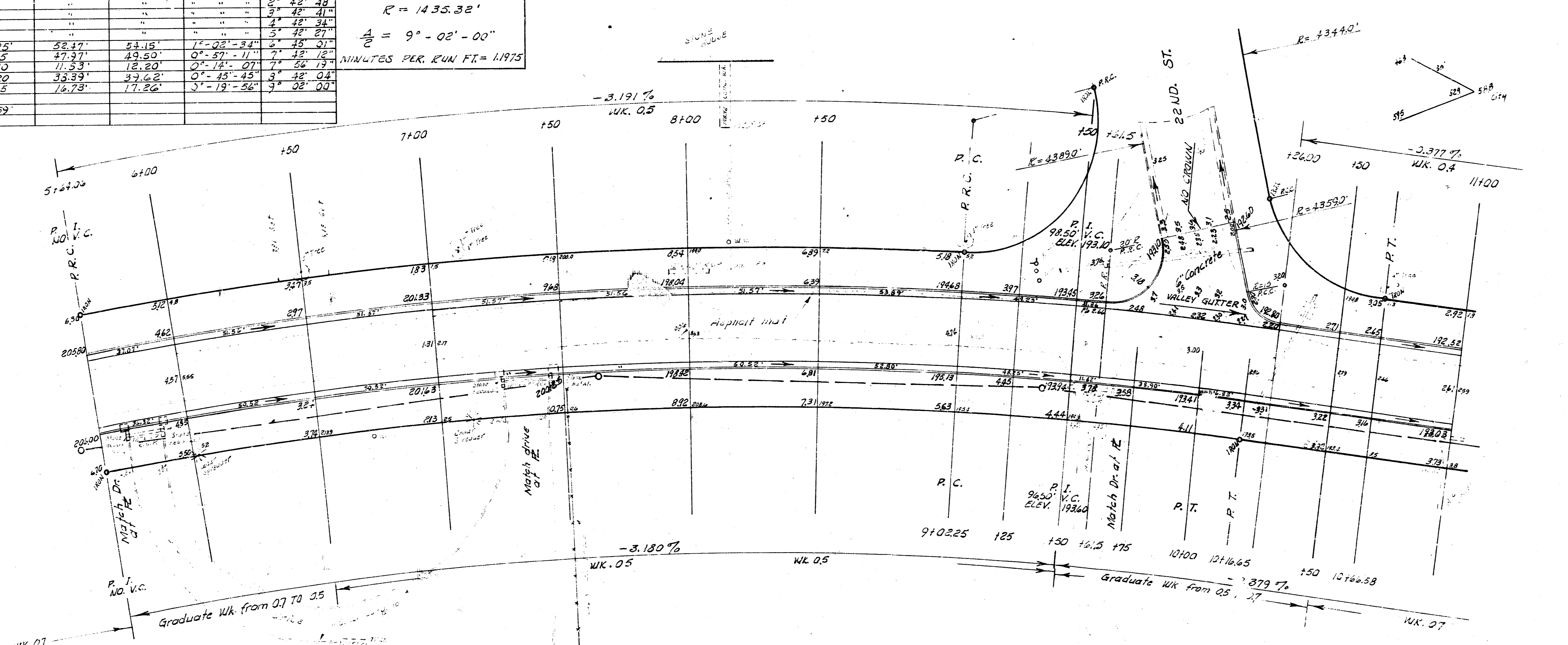
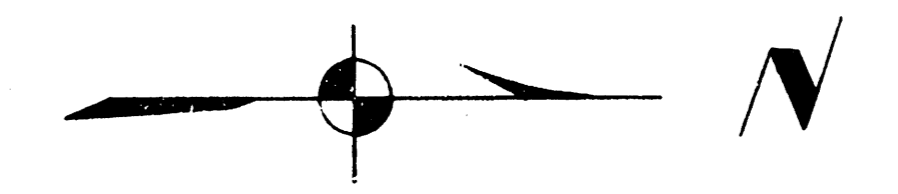
NOTE TO FIELD ENG. & CONTRACTOR:
 All ent. pipes & headwalls are to be disposed
 of in accordance with instructions
 from the city dirt checker.

BELMONT AVE.
 NL 21ST ST. TO SL 25TH ST.
 26'-2-30 A.C.
CITY OF WICHITA, KANSAS
 B. E. SMITH CITY ENGINEER
 1959 PROJ. NO. C18-115

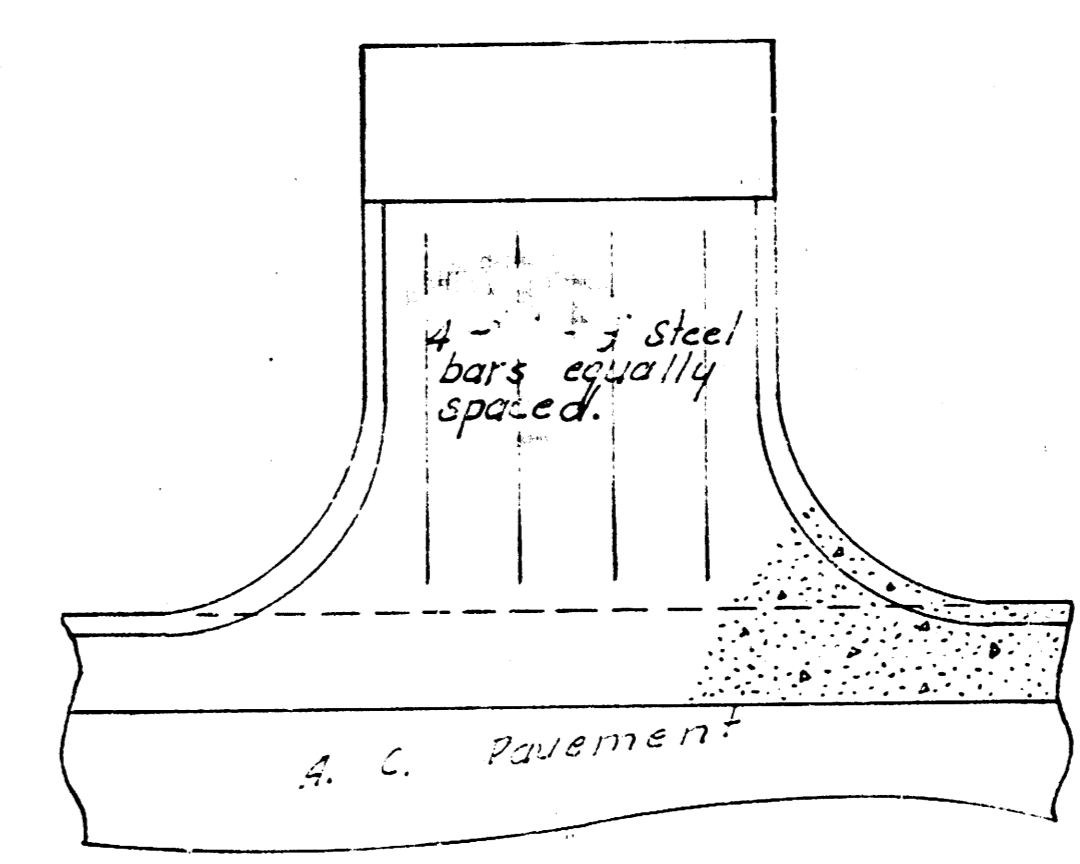
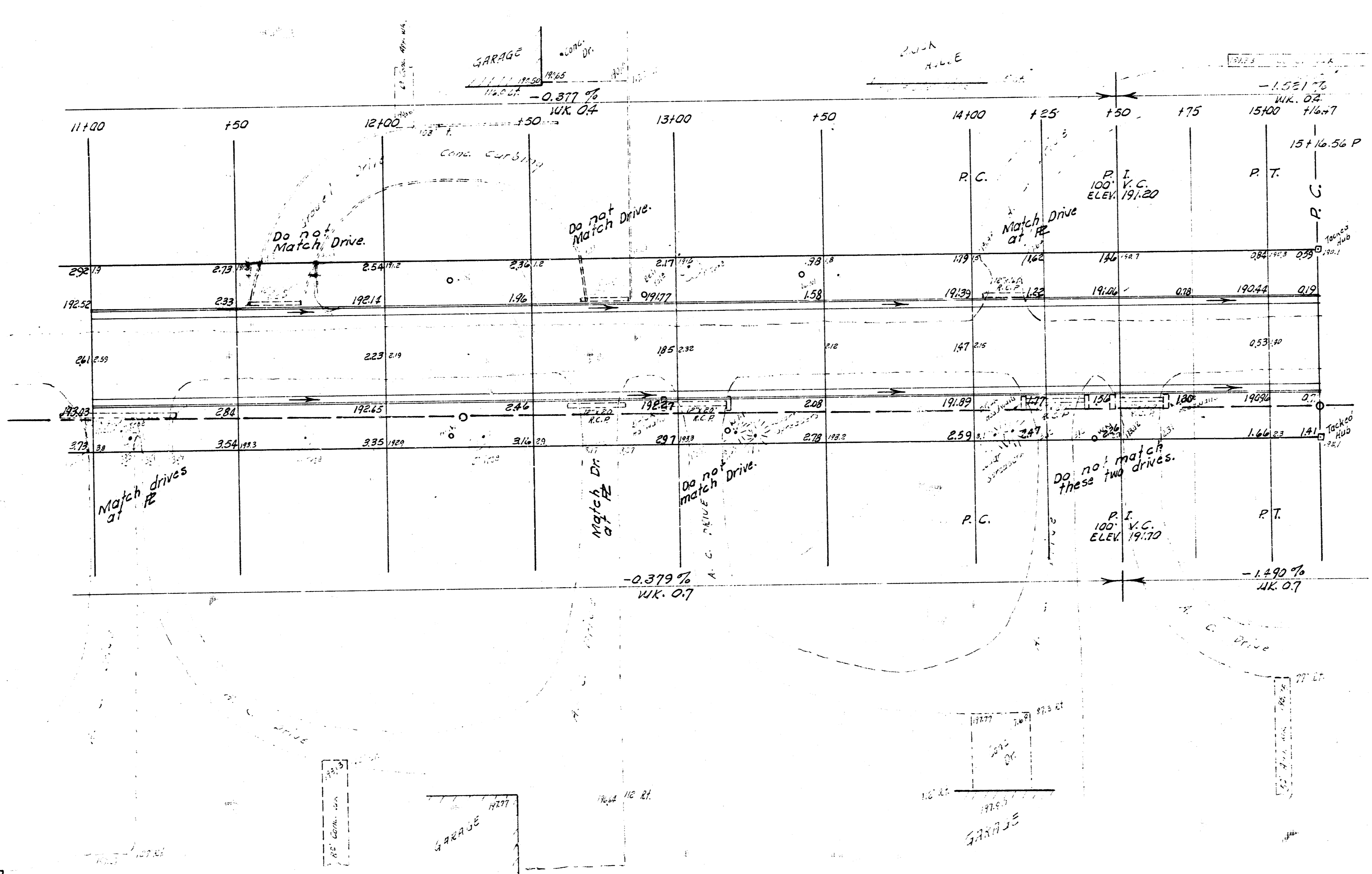
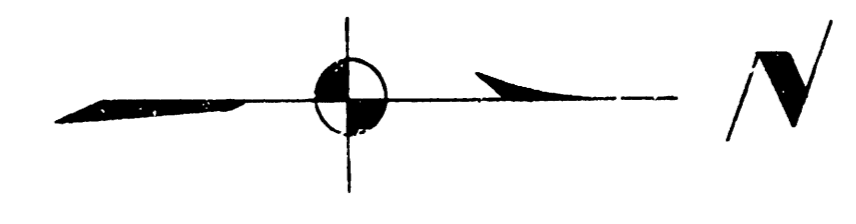
STATION	Chord Length S. of P.C.	Chord Length S. of P.T.	Chord Length S. of V.C.	Deflection at P.C.	Total Deflection
51+00	50.00	50.00	50.00	0°-43'-02"	0°-43'-02"
52+00	50.00	50.00	50.00	0°-59'-53"	1°-42'-55"
53+00	50.00	50.00	50.00	"	2°-42'-48"
54+00	50.00	50.00	50.00	"	3°-42'-41"
55+00	50.00	50.00	50.00	"	4°-42'-34"
56+00	50.00	50.00	50.00	"	5°-42'-27"
57+00	50.00	50.00	50.00	"	6°-42'-20"
58+00	50.00	50.00	50.00	"	7°-42'-12"
59+00	50.00	50.00	50.00	"	8°-42'-05"
60+00	50.00	50.00	50.00	"	9°-02'-00"
61+00	50.00	50.00	50.00	"	"
62+00	50.00	50.00	50.00	"	"
63+00	50.00	50.00	50.00	"	"
64+00	50.00	50.00	50.00	"	"
65+00	50.00	50.00	50.00	"	"
66+00	50.00	50.00	50.00	"	"
67+00	50.00	50.00	50.00	"	"
68+00	50.00	50.00	50.00	"	"
69+00	50.00	50.00	50.00	"	"
70+00	50.00	50.00	50.00	"	"
71+00	50.00	50.00	50.00	"	"
72+00	50.00	50.00	50.00	"	"
73+00	50.00	50.00	50.00	"	"
74+00	50.00	50.00	50.00	"	"
75+00	50.00	50.00	50.00	"	"
76+00	50.00	50.00	50.00	"	"
77+00	50.00	50.00	50.00	"	"
78+00	50.00	50.00	50.00	"	"
79+00	50.00	50.00	50.00	"	"
80+00	50.00	50.00	50.00	"	"
81+00	50.00	50.00	50.00	"	"
82+00	50.00	50.00	50.00	"	"
83+00	50.00	50.00	50.00	"	"
84+00	50.00	50.00	50.00	"	"
85+00	50.00	50.00	50.00	"	"
86+00	50.00	50.00	50.00	"	"
87+00	50.00	50.00	50.00	"	"
88+00	50.00	50.00	50.00	"	"
89+00	50.00	50.00	50.00	"	"
90+00	50.00	50.00	50.00	"	"
91+00	50.00	50.00	50.00	"	"
92+00	50.00	50.00	50.00	"	"
93+00	50.00	50.00	50.00	"	"
94+00	50.00	50.00	50.00	"	"
95+00	50.00	50.00	50.00	"	"
96+00	50.00	50.00	50.00	"	"
97+00	50.00	50.00	50.00	"	"
98+00	50.00	50.00	50.00	"	"
99+00	50.00	50.00	50.00	"	"
100+00	50.00	50.00	50.00	"	"
101+00	50.00	50.00	50.00	"	"
102+00	50.00	50.00	50.00	"	"
103+00	50.00	50.00	50.00	"	"
104+00	50.00	50.00	50.00	"	"
105+00	50.00	50.00	50.00	"	"
106+00	50.00	50.00	50.00	"	"
107+00	50.00	50.00	50.00	"	"
108+00	50.00	50.00	50.00	"	"
109+00	50.00	50.00	50.00	"	"
110+00	50.00	50.00	50.00	"	"
111+00	50.00	50.00	50.00	"	"
112+00	50.00	50.00	50.00	"	"
113+00	50.00	50.00	50.00	"	"
114+00	50.00	50.00	50.00	"	"
115+00	50.00	50.00	50.00	"	"
116+00	50.00	50.00	50.00	"	"
117+00	50.00	50.00	50.00	"	"
118+00	50.00	50.00	50.00	"	"
119+00	50.00	50.00	50.00	"	"
120+00	50.00	50.00	50.00	"	"
121+00	50.00	50.00	50.00	"	"
122+00	50.00	50.00	50.00	"	"
123+00	50.00	50.00	50.00	"	"
124+00	50.00	50.00	50.00	"	"
125+00	50.00	50.00	50.00	"	"
126+00	50.00	50.00	50.00	"	"
127+00	50.00	50.00	50.00	"	"
128+00	50.00	50.00	50.00	"	"
129+00	50.00	50.00	50.00	"	"
130+00	50.00	50.00	50.00	"	"
131+00	50.00	50.00	50.00	"	"
132+00	50.00	50.00	50.00	"	"
133+00	50.00	50.00	50.00	"	"
134+00	50.00	50.00	50.00	"	"
135+00	50.00	50.00	50.00	"	"
136+00	50.00	50.00	50.00	"	"
137+00	50.00	50.00	50.00	"	"
138+00	50.00	50.00	50.00	"	"
139+00	50.00	50.00	50.00	"	"
140+00	50.00	50.00	50.00	"	"
141+00	50.00	50.00	50.00	"	"
142+00	50.00	50.00	50.00	"	"
143+00	50.00	50.00	50.00	"	"
144+00	50.00	50.00	50.00	"	"
145+00	50.00	50.00	50.00	"	"
146+00	50.00	50.00	50.00	"	"
147+00	50.00	50.00	50.00	"	"
148+00	50.00	50.00	50.00	"	"
149+00	50.00	50.00	50.00	"	"
150+00	50.00	50.00	50.00	"	"

CURVE DATA
 STA. 51+64.04 TO STA 101+6.65
 STATIONING ON EAST 12
 R = 1435.32'
 Δ = 9°-02'-00"
 MINUTES PER 1000 FT. = 1.1975

3 in. 200.33 WE corr. stone slab, Top Stone Ret. wall in front of metal yard Light Post E. side to # 2259 Belmont Ave.



BELMONT AVE.



DRIVE DETAIL
FOR EXTRA STEEL
For drives constructed over san.
sewer on east side Belmont Ave.

BELMONT AVE.



PROJ. NO. C-8-115

DATE 1950

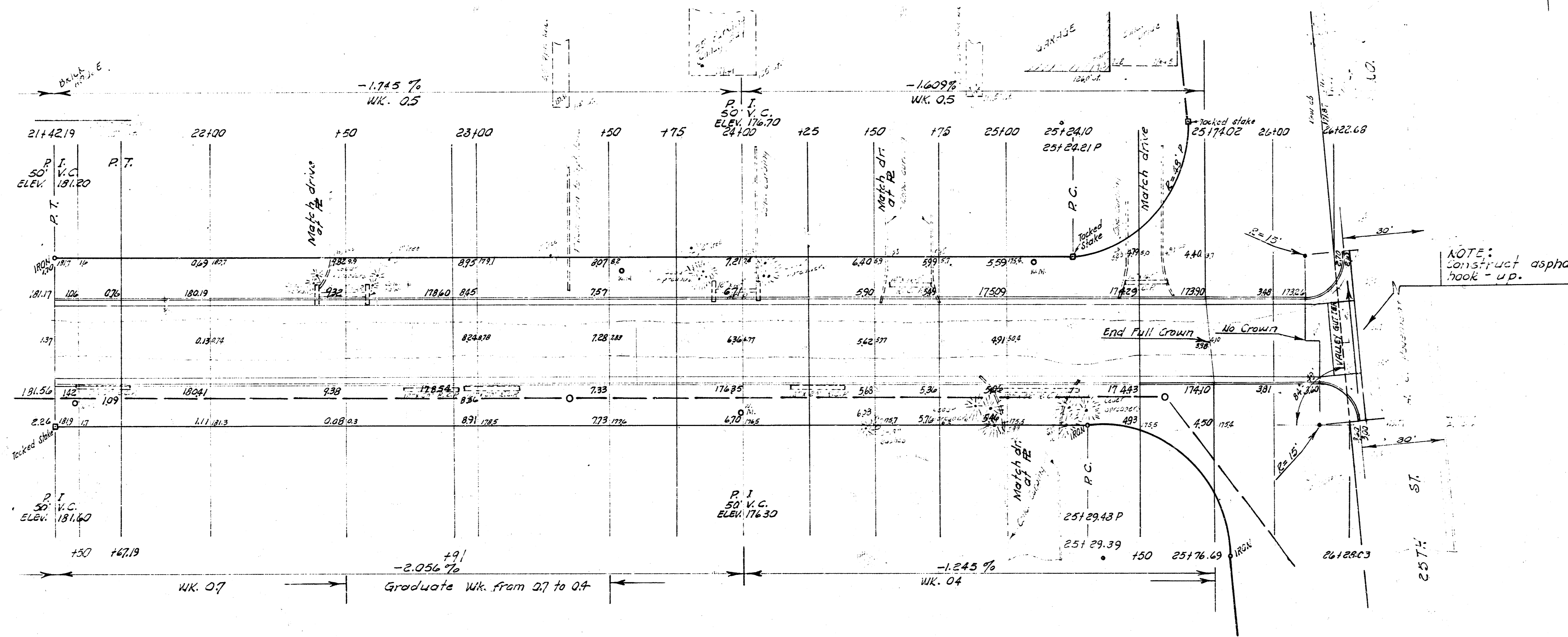
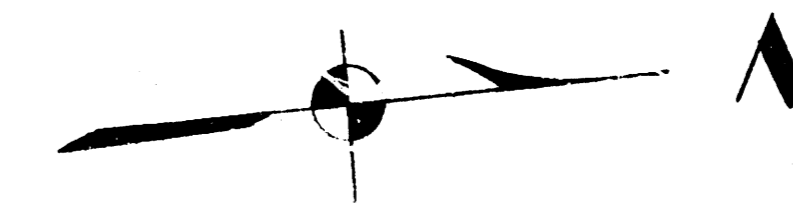
CURVE DATA
Stationing on east 1/2 Sta 1514.47 to Sta. 19149.14
R = 1019.88' $\frac{1}{2} \Delta = 9^{\circ} 27' 00''$
11" 08' 00"

STATIONS	ARC LENGTH E. 1/2	Chord length of offset from % of E. 1/2 R = 1019.88	Chord length of offset from % of W. 1/2 R = 966.88	DEFLECTION	TOTAL DEFLECTION
1514.47 P.C.					
1500.00	33.53	31.72	31.72	0° 56' 31"	0° 56' 31"
1490.00	49.63	47.38	47.38	1° 24' 16"	2° 20' 47"
1480.00	49.63	47.38	47.38	1° 24' 16"	3° 45' 03"
1470.00	49.63	47.38	47.38	1° 24' 16"	5° 09' 19"
1460.00	49.63	47.38	47.38	1° 24' 16"	6° 33' 35"
1450.00	49.63	47.38	47.38	1° 24' 16"	7° 57' 51"
1440.00	49.63	47.38	47.38	1° 24' 16"	9° 22' 07"
1430.00	49.63	47.38	47.38	1° 24' 16"	10° 46' 23"
1420.00	49.63	47.38	47.38	1° 24' 16"	12° 10' 39"
1410.00	49.63	47.38	47.38	1° 24' 16"	13° 34' 55"
1400.00	49.63	47.38	47.38	1° 24' 16"	14° 59' 11"
1390.00	49.63	47.38	47.38	1° 24' 16"	16° 23' 27"
1380.00	49.63	47.38	47.38	1° 24' 16"	17° 47' 43"
1370.00	49.63	47.38	47.38	1° 24' 16"	19° 11' 59"
1360.00	49.63	47.38	47.38	1° 24' 16"	20° 36' 15"
1350.00	49.63	47.38	47.38	1° 24' 16"	22° 00' 31"
1340.00	49.63	47.38	47.38	1° 24' 16"	23° 24' 47"
1330.00	49.63	47.38	47.38	1° 24' 16"	24° 49' 03"
1320.00	49.63	47.38	47.38	1° 24' 16"	26° 13' 19"
1310.00	49.63	47.38	47.38	1° 24' 16"	27° 37' 35"
1300.00	49.63	47.38	47.38	1° 24' 16"	29° 01' 51"
1290.00	49.63	47.38	47.38	1° 24' 16"	30° 26' 07"
1280.00	49.63	47.38	47.38	1° 24' 16"	31° 50' 23"
1270.00	49.63	47.38	47.38	1° 24' 16"	33° 14' 39"
1260.00	49.63	47.38	47.38	1° 24' 16"	34° 38' 55"
1250.00	49.63	47.38	47.38	1° 24' 16"	36° 03' 11"
1240.00	49.63	47.38	47.38	1° 24' 16"	37° 27' 27"
1230.00	49.63	47.38	47.38	1° 24' 16"	38° 51' 43"
1220.00	49.63	47.38	47.38	1° 24' 16"	40° 15' 59"
1210.00	49.63	47.38	47.38	1° 24' 16"	41° 40' 15"
1200.00	49.63	47.38	47.38	1° 24' 16"	43° 04' 31"
1190.00	49.63	47.38	47.38	1° 24' 16"	44° 28' 47"
1180.00	49.63	47.38	47.38	1° 24' 16"	45° 53' 03"
1170.00	49.63	47.38	47.38	1° 24' 16"	47° 17' 19"
1160.00	49.63	47.38	47.38	1° 24' 16"	48° 41' 35"
1150.00	49.63	47.38	47.38	1° 24' 16"	50° 05' 51"
1140.00	49.63	47.38	47.38	1° 24' 16"	51° 30' 07"
1130.00	49.63	47.38	47.38	1° 24' 16"	52° 54' 23"
1120.00	49.63	47.38	47.38	1° 24' 16"	54° 18' 39"
1110.00	49.63	47.38	47.38	1° 24' 16"	55° 42' 55"
1100.00	49.63	47.38	47.38	1° 24' 16"	57° 07' 11"
1090.00	49.63	47.38	47.38	1° 24' 16"	58° 31' 27"
1080.00	49.63	47.38	47.38	1° 24' 16"	59° 55' 43"
1070.00	49.63	47.38	47.38	1° 24' 16"	61° 19' 59"
1060.00	49.63	47.38	47.38	1° 24' 16"	62° 44' 15"
1050.00	49.63	47.38	47.38	1° 24' 16"	64° 08' 31"
1040.00	49.63	47.38	47.38	1° 24' 16"	65° 32' 47"
1030.00	49.63	47.38	47.38	1° 24' 16"	66° 57' 03"
1020.00	49.63	47.38	47.38	1° 24' 16"	68° 21' 19"
1010.00	49.63	47.38	47.38	1° 24' 16"	69° 45' 35"
1000.00	49.63	47.38	47.38	1° 24' 16"	71° 09' 51"
990.00	49.63	47.38	47.38	1° 24' 16"	72° 34' 07"
980.00	49.63	47.38	47.38	1° 24' 16"	73° 58' 23"
970.00	49.63	47.38	47.38	1° 24' 16"	75° 22' 39"
960.00	49.63	47.38	47.38	1° 24' 16"	76° 46' 55"
950.00	49.63	47.38	47.38	1° 24' 16"	78° 11' 11"
940.00	49.63	47.38	47.38	1° 24' 16"	79° 35' 27"
930.00	49.63	47.38	47.38	1° 24' 16"	80° 59' 43"
920.00	49.63	47.38	47.38	1° 24' 16"	82° 23' 59"
910.00	49.63	47.38	47.38	1° 24' 16"	83° 48' 15"
900.00	49.63	47.38	47.38	1° 24' 16"	85° 12' 31"
890.00	49.63	47.38	47.38	1° 24' 16"	86° 36' 47"
880.00	49.63	47.38	47.38	1° 24' 16"	88° 01' 03"
870.00	49.63	47.38	47.38	1° 24' 16"	89° 25' 19"
860.00	49.63	47.38	47.38	1° 24' 16"	90° 49' 35"
850.00	49.63	47.38	47.38	1° 24' 16"	92° 13' 51"
840.00	49.63	47.38	47.38	1° 24' 16"	93° 38' 07"
830.00	49.63	47.38	47.38	1° 24' 16"	95° 02' 23"
820.00	49.63	47.38	47.38	1° 24' 16"	96° 26' 39"
810.00	49.63	47.38	47.38	1° 24' 16"	97° 50' 55"
800.00	49.63	47.38	47.38	1° 24' 16"	99° 15' 11"
790.00	49.63	47.38	47.38	1° 24' 16"	100° 39' 27"
780.00	49.63	47.38	47.38	1° 24' 16"	102° 03' 43"
770.00	49.63	47.38	47.38	1° 24' 16"	103° 27' 59"
760.00	49.63	47.38	47.38	1° 24' 16"	104° 52' 15"
750.00	49.63	47.38	47.38	1° 24' 16"	106° 16' 31"
740.00	49.63	47.38	47.38	1° 24' 16"	107° 40' 47"
730.00	49.63	47.38	47.38	1° 24' 16"	109° 04' 63"
720.00	49.63	47.38	47.38	1° 24' 16"	110° 28' 79"
710.00	49.63	47.38	47.38	1° 24' 16"	111° 52' 95"
700.00	49.63	47.38	47.38	1° 24' 16"	113° 16' 11"
690.00	49.63	47.38	47.38	1° 24' 16"	114° 40' 27"
680.00	49.63	47.38	47.38	1° 24' 16"	116° 04' 43"
670.00	49.63	47.38	47.38	1° 24' 16"	117° 28' 59"
660.00	49.63	47.38	47.38	1° 24' 16"	118° 53' 15"
650.00	49.63	47.38	47.38	1° 24' 16"	120° 17' 31"
640.00	49.63	47.38	47.38	1° 24' 16"	121° 41' 47"
630.00	49.63	47.38	47.38	1° 24' 16"	123° 06' 03"
620.00	49.63	47.38	47.38	1° 24' 16"	124° 30' 19"
610.00	49.63	47.38	47.38	1° 24' 16"	125° 54' 35"
600.00	49.63	47.38	47.38	1° 24' 16"	127° 18' 51"
590.00	49.63	47.38	47.38	1° 24' 16"	128° 43' 07"
580.00	49.63	47.38	47.38	1° 24' 16"	130° 07' 23"
570.00	49.63	47.38	47.38	1° 24' 16"	131° 31' 39"
560.00	49.63	47.38	47.38	1° 24' 16"	132° 55' 55"
550.00	49.63	47.38	47.38	1° 24' 16"	134° 20' 11"
540.00	49.63	47.38	47.38	1° 24' 16"	135° 44' 27"
530.00	49.63	47.38	47.38	1° 24' 16"	137° 08' 43"
520.00	49.63	47.38	47.38	1° 24' 16"	138° 32' 59"
510.00	49.63	47.38	47.38	1° 24' 16"	139° 57' 15"
500.00	49.63	47.38	47.38	1° 24' 16"	141° 21' 31"
490.00	49.63	47.38	47.38	1° 24' 16"	142° 45' 47"
480.00	49.63	47.38	47.38	1° 24' 16"	144° 09' 63"
470.00	49.63	47.38	47.38	1° 24' 16"	145° 33' 79"
460.00	49.63	47.38	47.38	1° 24' 16"	146° 57' 95"
450.00	49.63	47.38	47.38	1° 24' 16"	148° 21' 11"
440.00	49.63	47.38	47.38	1° 24' 16"	149° 45' 27"
430.00	49.63	47.38	47.38	1° 24' 16"	151° 09' 43"
420.00	49.63	47.38	47.38	1° 24' 16"	152° 33' 59"
410.00	49.63	47.38	47.38	1° 24' 16"	153° 58' 15"
400.00	49.63	47.38	47.38	1° 24' 16"	155° 22' 31"
390.00	49.63	47.38	47.38	1° 24' 16"	156° 46' 47"
380.00	49.63	47.38	47.38	1° 24' 16"	158° 10' 63"
370.00	49.63	47.38	47.38	1° 24' 16"	159° 34' 79"
360.00	49.63	47.38	47.38	1° 24' 16"	160° 58' 95"
350.00	49.63	47.38	47.38	1° 24' 16"	162° 22' 11"
340.00	49.63	47.38	47.38	1° 24' 16"	163° 46' 27"
330.00	49.63	47.38	47.38	1° 24' 16"	165° 10' 43"
320.00	49.63	47.38	47.38	1° 24' 16"	166° 34' 59"
310.00	49.63	47.38	47.38	1° 24' 16"	167° 59' 15"
300.00	49.63	47.38	47.38	1° 24' 16"	169° 23' 31"
290.00	49.63	47.38	47.38	1° 24' 16"	170° 47' 47"
280.00	49.63	47.38	47.38	1° 24' 16"	172° 11' 63"
270.00	49.63	47.38	47.38	1° 24' 16"	173° 35' 79"
260.00	49.63	47.38	47.38	1° 24' 16"	174° 59' 95"
250.00	49.63	47.38	47.38	1° 24' 16"	176° 23' 11"
240.00	49.63	47.38	47.38	1° 24' 16"	177° 47' 27"
230.00	49.63	47.38	47.38	1° 24' 16"	179° 11' 43"
220.00	49.63	47.38	47.38	1° 24' 16"	180° 35' 59"
210.00	49.63	47.38	47.38	1° 24' 16"	181° 60' 15"
200.00	49.63	47.38	47.38	1° 24' 16"	182° 24' 31"
190.00	49.63	47.38	47.38	1° 24' 16"	183° 48' 47"
180.00	49.63	47.38	47.38	1° 24' 16"	185° 12' 63"
170.00	49.63	47.38	47.38	1° 24' 16"	186° 36' 79"
160.00	49.63	47.38	47.38	1° 24' 16"	188° 00' 95"
150.00	49.63	47.38	47.38	1° 24' 16"	189° 24' 11"
140.00	49.63	47.38	47.38	1° 24' 16"	190° 48' 27"
130.00	49.63	47.38	47.38	1° 24' 16"	192° 12' 43"
120.00	49.63	47.38	47.38	1° 24' 16"	193° 36' 59"
110.00	49.63	47.38	47.38	1° 24' 16"	195° 01' 15"
100.00	49.63	47.38	47.38	1° 24' 16"	196° 25' 31"
90.00	49.63	47.38	47.38	1° 24' 16"	197° 49' 47"
80.00	49.63	47.38	47.38	1° 24' 16"	199° 13' 63"
70.00	49.63	47.38	47.38	1° 24' 16"	200° 37' 79"
60.00	49.63	47.38	47.38	1° 24' 16"	202° 01' 95"
50.00	49.63	47.38	47.38	1° 24' 16"	203° 25' 11"
40.00	49.63	47.38	47.38	1° 24' 16"	204° 49' 27"
30.00	49.63	47.38	47.38	1° 24' 16"	206° 13' 43"
20.00	49.63	47.38	47.38	1° 24' 16"	207° 37' 59"
10.00	49.63	47.38	47.38	1° 24' 16"	209° 01' 75"
0.00	49.63	47.38	47.38	1° 24' 16"	210° 25' 91"

CURVE DATA
Stationing on east 1/2 Sta 19190.00 to Sta 21142.19
R = 383.04' $\frac{1}{2} \Delta = 8^{\circ} 24' 24''$

STATIONS	ARC LENGTH E. 1/2	Chord length of offset from % of E. 1/2 R = 383.04	Chord length of offset from % of W. 1/2 R = 436.34	DEFLECTION	TOTAL DEFLECTIONS
19190.00					
20148.80	18.80	19.14	21.40	1° 24' 28"	1° 24' 28"
20129.80 P.C.	21.00	21.28	23.50	1° 24' 28"	2° 48' 56"
20113.89	23.59	24.20	26.23	1° 24' 45"	4° 13' 41"
20100.00	26.01	27.27	29.27	1° 24' 18"	5° 38' 29"
20082.19 P.T.	22.19	22.94</			

3.11. 70:55 LE con. conc. slip to # 2551 Belmont.



NOTE: construct asphalt hook - up.

BELMONT AVE.

PRJ. NO. C13-115

