

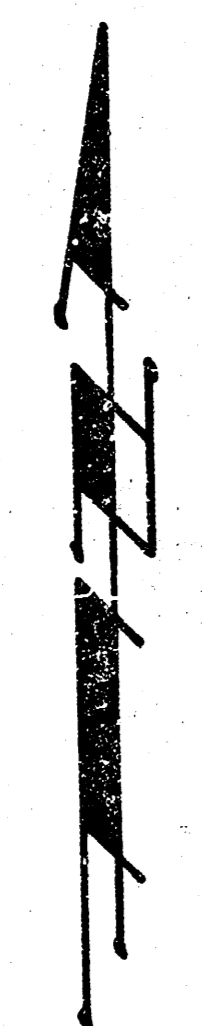
BEECH STREET

S.L. HARRY TO S.L. NIES 3RD ADDITION

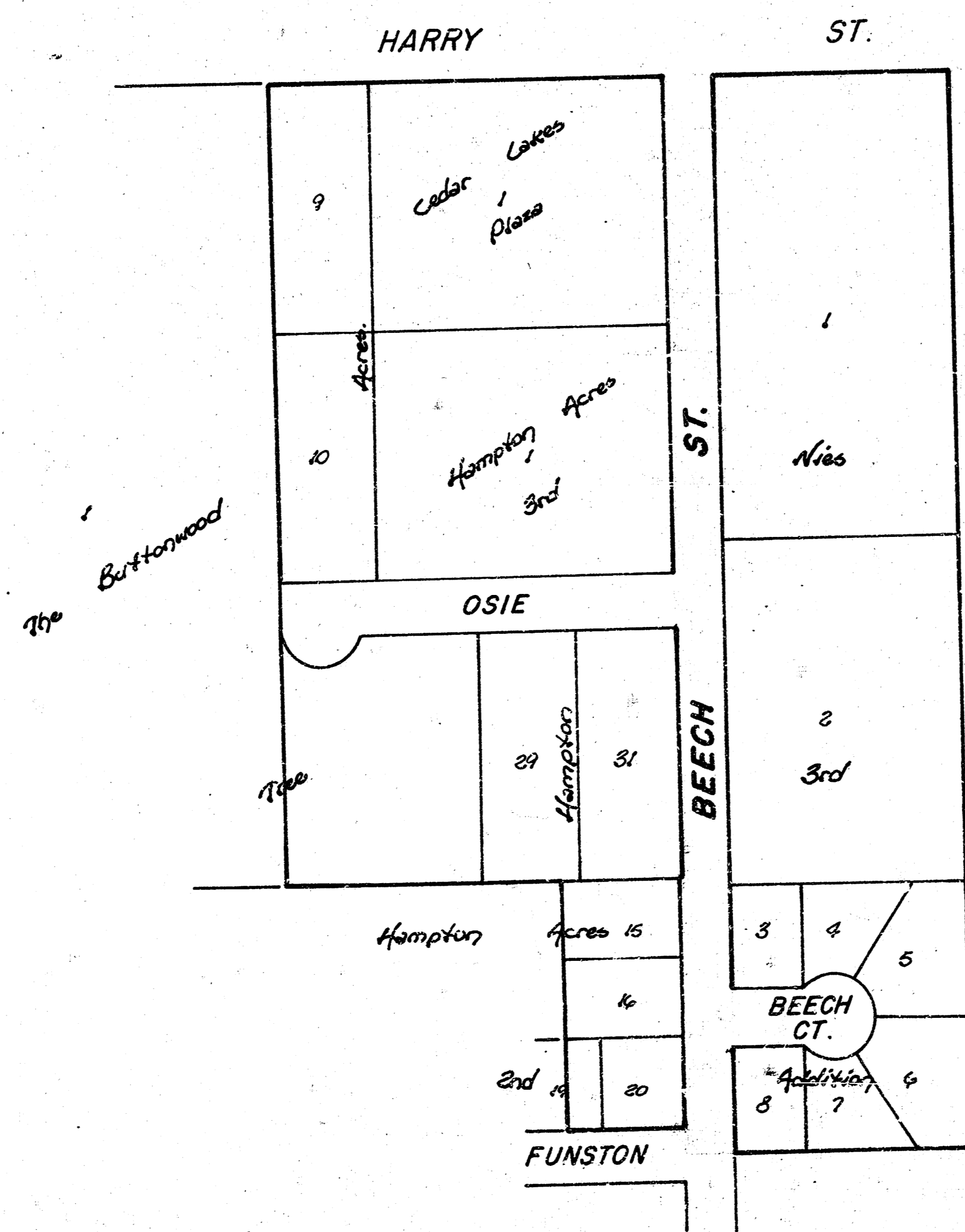
472-76-245-80948-000-000-001

CITY OF WICHITA, KS.

R. W. BRUGGEMAN ——— DIR. ENGINEERING



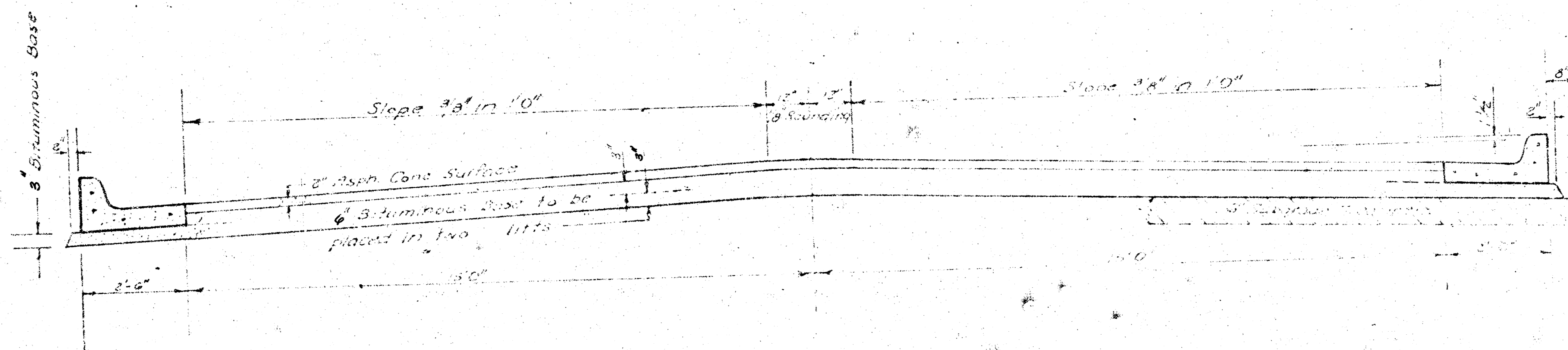
Scale: 1" = 150'



Date

1/5

BAUGHMAN COMPANY, P.A.
SURVEYING & ENGINEERING
316/262-7271 • 330 LAURA • WICHITA, KANSAS 67211

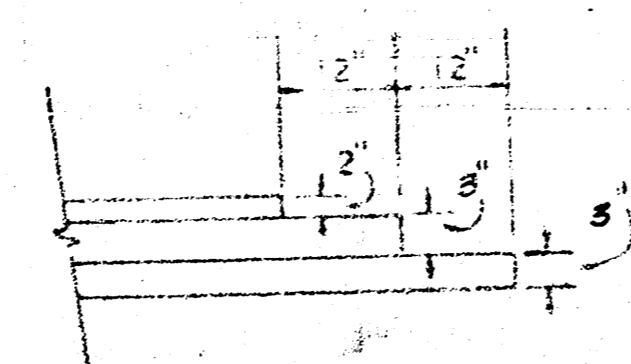


TYPICAL SECTION

35' ASPHALTIC CONCRETE PAVEMENT WITH BITUMINOUS BASE

A TACK COAT OF EMULSIFIED ASPHALT (SS-1H) SHALL BE APPLIED AT AN APPROXIMATE RATE 0.05 GALLONS PER SQ YD BETWEEN LIFTS OF ASPHALTIC MATERIALS WHEN ORDERED BY THE ENGINEER TACK COAT WILL NOT BE PAID FOR DIRECTLY AND SHALL BE CONSIDERED AS SUBSIDIARY TO PRICE BID FOR ASPHALTIC PAVEMENT. BITUMINOUS BASE AND ASPHALTIC CONCRETE WEARING SURFACE SHALL BE PLACED WITH A LAYDOWN MACHINE HAVING AUTOMATIC CONTROLS FOR CROWN AND GRADE. CONSTRUCTION JOINTS IN EACH LIFT SHALL BE STAGGERED A MINIMUM DISTANCE OF 1' WITH JOINTS IN PRECEDING LIFTS AND PLACED SUCH THAT A JOINT WILL BE CONSTRUCTED ON THE CENTERLINE IN THE TOP LIFT.

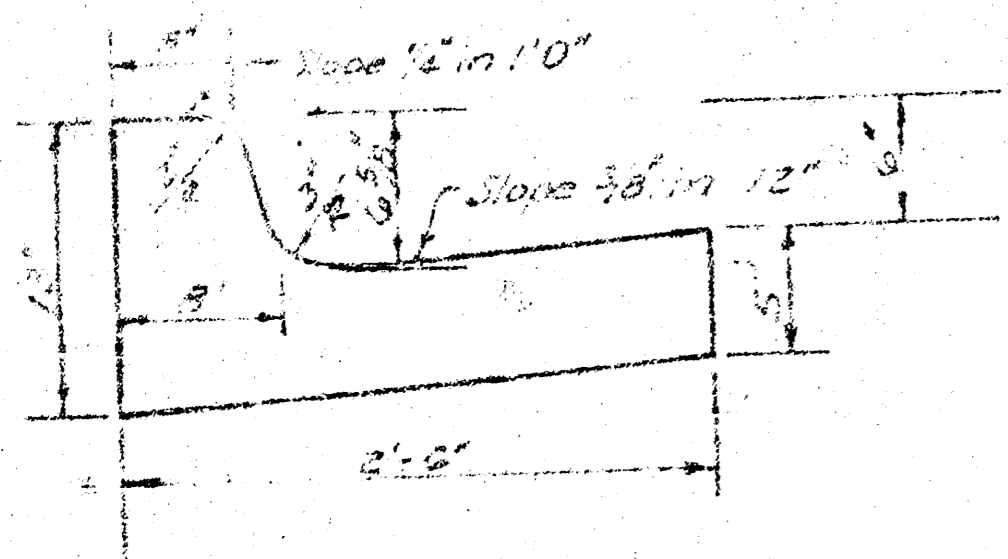
DETAIL OF TRANSVERSE CONSTRUCTION JOINTS



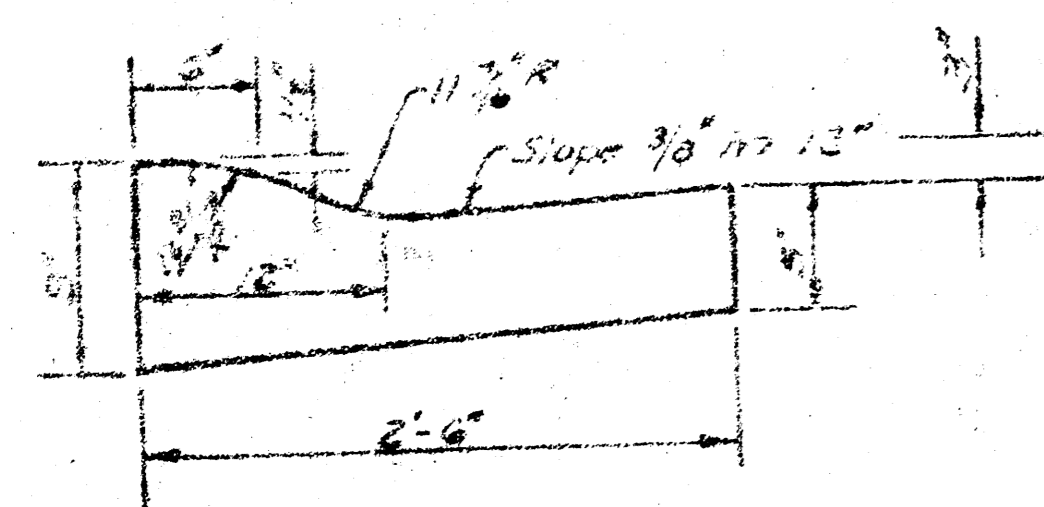
TRANSVERSE CONSTRUCTION JOINTS SHALL BE CONSTRUCTED IN FLEXIBLE BASE PAVEMENTS AT LOCATIONS WHERE PAVEMENT TEMPORARILY ENDS TO FACILITATE FUTURE PAVEMENT CONSTRUCTION AS SHOWN BY DETAIL THE COST OF CONSTRUCTING THE TRANSVERSE CONSTRUCTION JOINTS SHALL NOT BE MEASURED OR PAID FOR DIRECTLY BUT SHALL BE INCLUDED IN THE BID PRICE FOR SQUARE YARDS OF ASPHALTIC CONCRETE PAVEMENT.

The 3" Bituminous Base shown on this detail shall be placed in two lifts of 1.5" each. The Bituminous Base shown on this detail shall be paid as 3" Bituminous Base.

CONTINUED CURB & GUTTER



ROLL TYPE CURB & GUTTER



CITY OF WICHITA KANSAS
DEPARTMENT of PUBLIC WORKS - Engineering
Division.

2/5

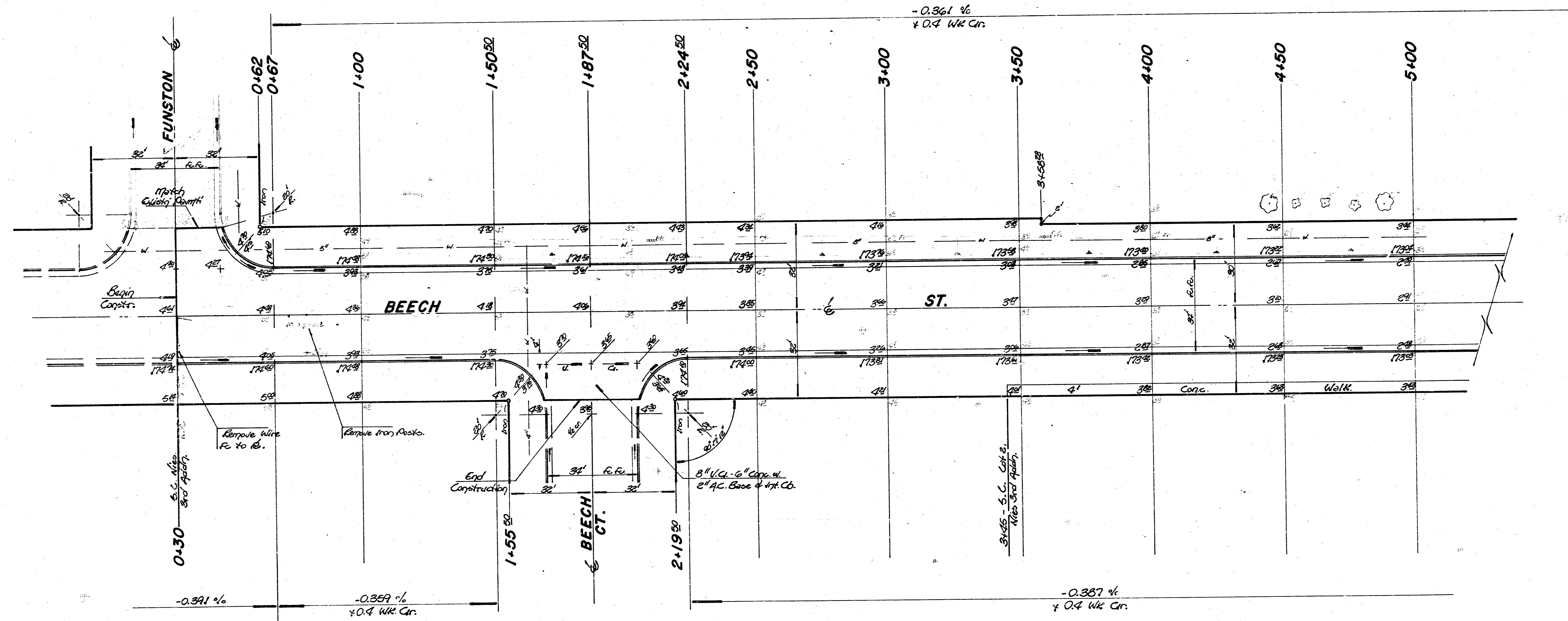
FILMED FROM THE BEST AVAILABLE COPY

B.M. 172.23 R.R. Spk. S. of R.R. e. N.W. Cor. Davis & Beech.
 B.M. 175.03 R.R. Spk. N. of R.R. e. N.W. Cor. Beech & Funston.
 B.M. 172.03 City Std. Elev. 48' S. & 46' W. of E. Webb Ed. & Harry.



Scale:
1" = 20'

Survey - TCO 83
Plan - Buchanan Co. - Full size



Intersection Quantities

3729	Sy.	5"	Asph. Conc. Pavement	6"	Bituminous Base	
190	Sy.	3"	Bituminous Base			
642	Lf.		Combined Cb. & Ctr.			
422	Lf.		Integral Cb.			
1050	Sf.		Wheelchair Ramp			
0	Sf.		4" Walk			
345.7	Cy.		Excavation			
0	Cy.		Comp. Fill			
2326	Lbs.		Reinforcing Steel			
5329	Sy.		Manipulation			
84	Tons		Lime or Cement			
389	Sy.		U.C.	6"	Concrete & 6"	Asphaltic Conc. Base.

B.I.
Elev. 174.60
46 U.C.

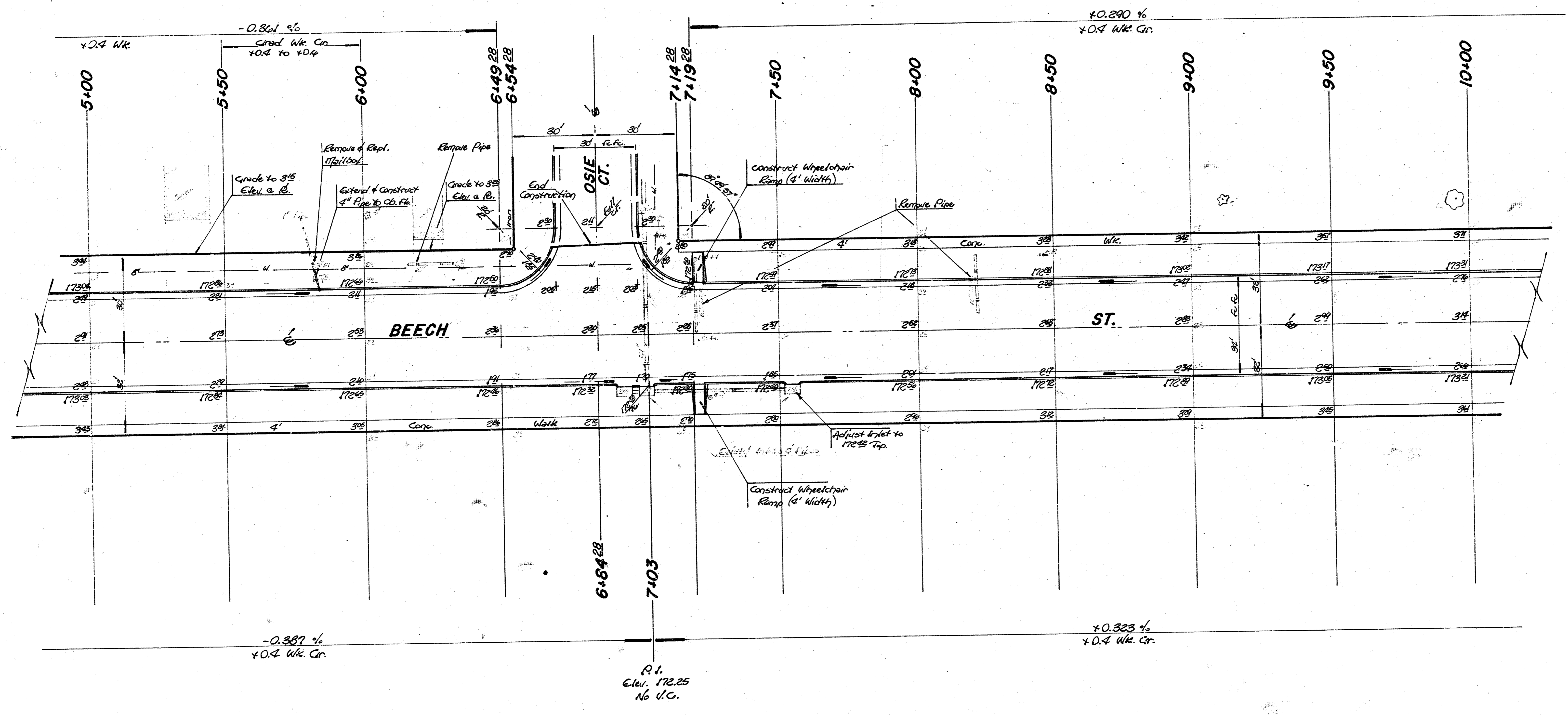
Property		City	
Excavation =	2485.9 cy.	Excavation =	345.7 cy.
+10% =	2734.5 cy.	+10% =	380.3 cy.
Total =	2734.5 cy.	Total =	380.3 cy.
Manipulation =	4633.6 sy.	Manipulation =	672.9 sy.
Comp. Fill =	0	Comp. Fill =	0

Note -
 XXXX Indicates Hedge Removal
 Trees to be taken and any drops mowed or destroyed due to construction shall be replaced.
 Contractor to verify any proposed Gas Service Co. lines for this area.
 Contractor to co-ordinate construction w. that of Beech Ct., Davis Ct. and Beech to the south of this Project.
 Mailboxes are to be removed & replaced.
 Trees to be removed are marked this way (X), except that any tree which in the opinion of the Engineer can be saved, shall be spared.
 NO MORE THAN 11-20' DRIVES.

BEECH ST.
 472-76-245-80948-000-000-001



Scale
1" = 20'





Scale:
1" = 20'

