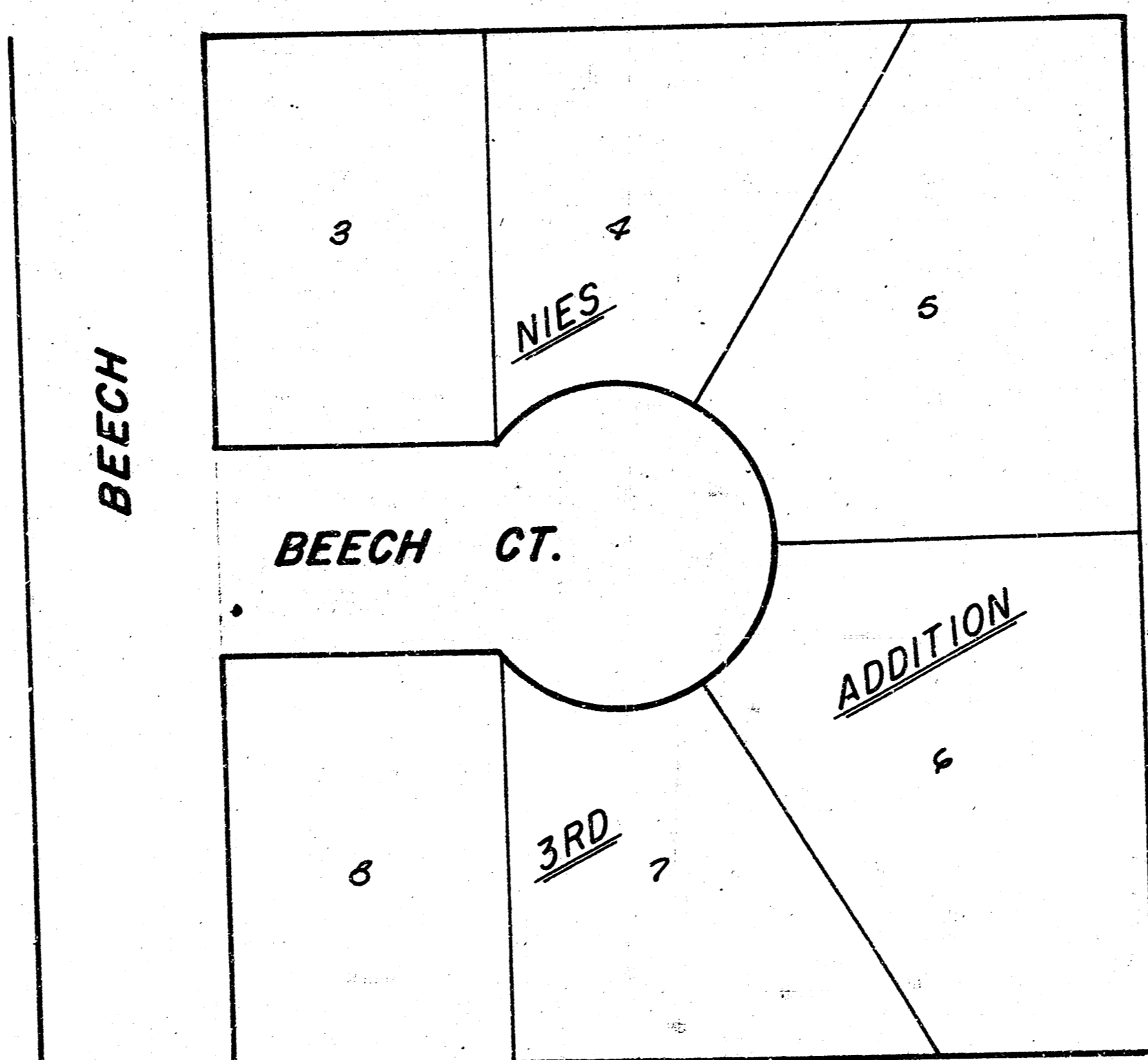
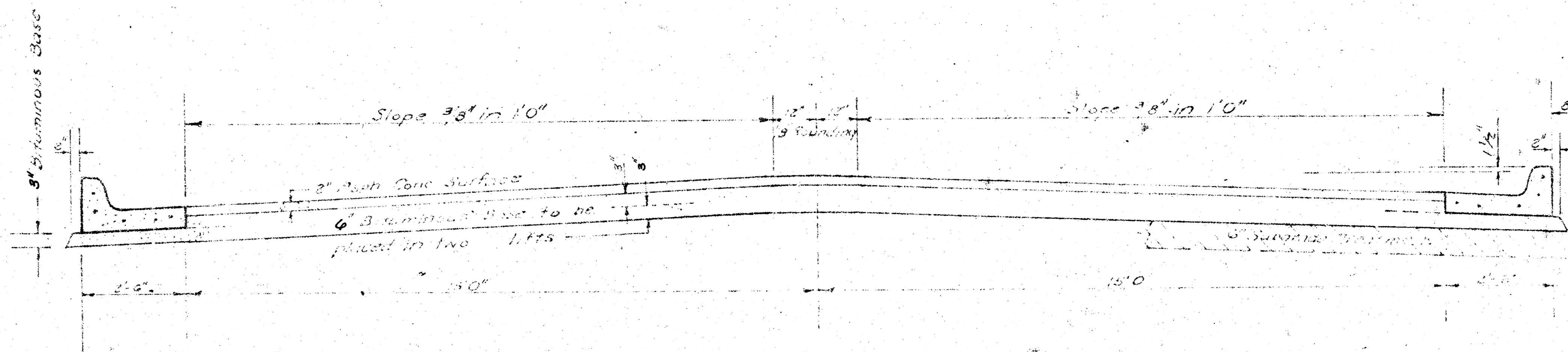


BEECH COURT
E. L. BEECH ST. TO AND INCL. CUL-DE-SAC
472-76-245-80949-000-000-001
CITY OF WICHITA, KS.
R. W. BRUGGEMAN — DIR. ENGINEERING





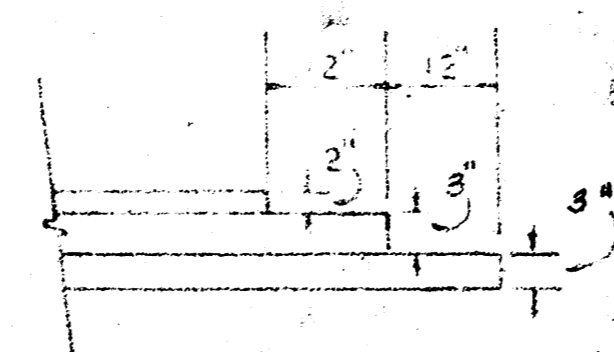
TYPICAL SECTION

35' ASPHALTIC CONCRETE PAVEMENT WITH BITUMINOUS BASE

A TACK COAT OF EMULSIFIED ASPHALT (SS-1H) SHALL BE APPLIED AT AN APPROXIMATE RATE 0.05 GALLONS PER SQ YD BETWEEN LIFTS OF ASPHALTIC MATERIALS WHEN ORDERED BY THE ENGINEER. TACK COAT WILL NOT BE PAID FOR DIRECTLY AND SHALL BE CONSIDERED AS SUBSIDIARY TO PRICE BID FOR ASPHALTIC PAVEMENT.

BITUMINOUS BASE AND ASPHALTIC CONCRETE WEARING SURFACE SHALL BE PLACED WITH A LAYDOWN MACHINE HAVING AUTOMATIC CONTROLS FOR CROWN AND GRADE. CONSTRUCTION JOINTS IN EACH LIFT SHALL BE STAGGERED A MINIMUM DISTANCE OF 1' WITH JOINTS IN PRECEDING LIFTS AND PLACED SUCH THAT A JOINT WILL BE CONSTRUCTED ON THE CENTERLINE IN THE TOP LIFT.

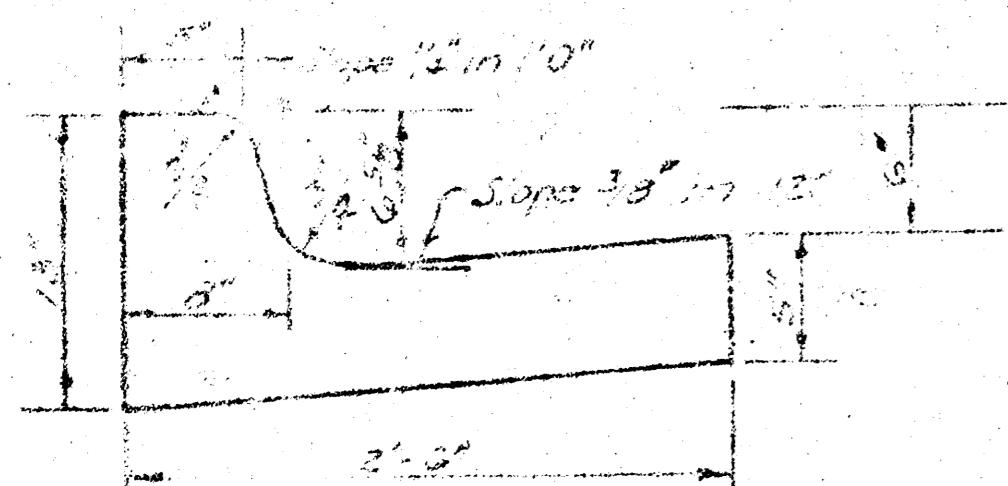
DETAIL OF TRANSVERSE CONSTRUCTION JOINTS



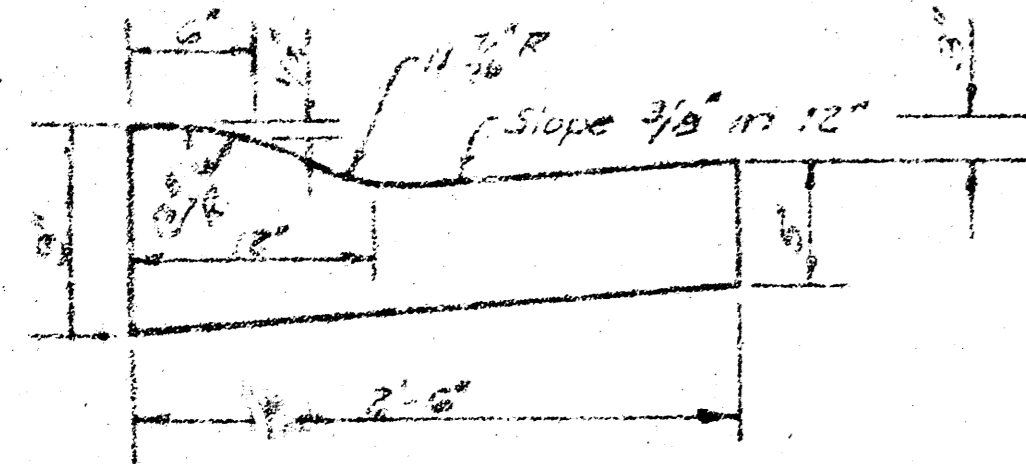
TRANSVERSE CONSTRUCTION JOINTS SHALL BE CONSTRUCTED IN FLEXIBLE BASE PAVEMENTS AT LOCATIONS WHERE PAVEMENT TEMPORARILY ENDS TO FACILITATE FUTURE PAVEMENT CONSTRUCTION AS SHOWN BY DETAIL. THE COST OF CONSTRUCTING THE TRANSVERSE CONSTRUCTION JOINTS SHALL NOT BE MEASURED OR PAID FOR DIRECTLY BUT SHALL BE INCLUDED IN THE BID PRICE FOR SQUARE YARDS OF ASPHALTIC CONCRETE PAVEMENT.

The bid Pavement shall include the bituminous base and shall be paid as shown in the typical section. The bituminous base shall be placed in two lifts and shall be paid as shown in the typical section.

COMBINED CURB & GUTTER



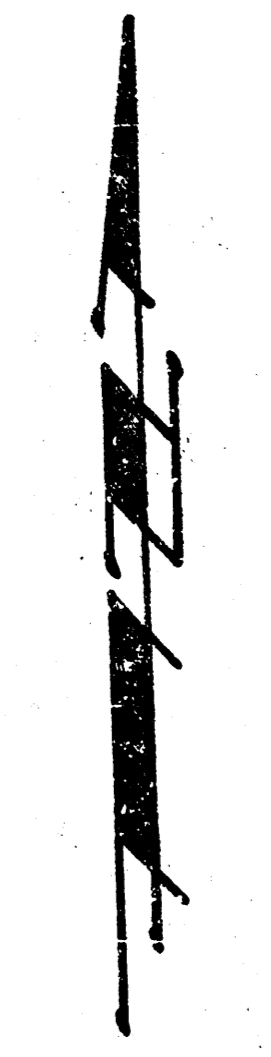
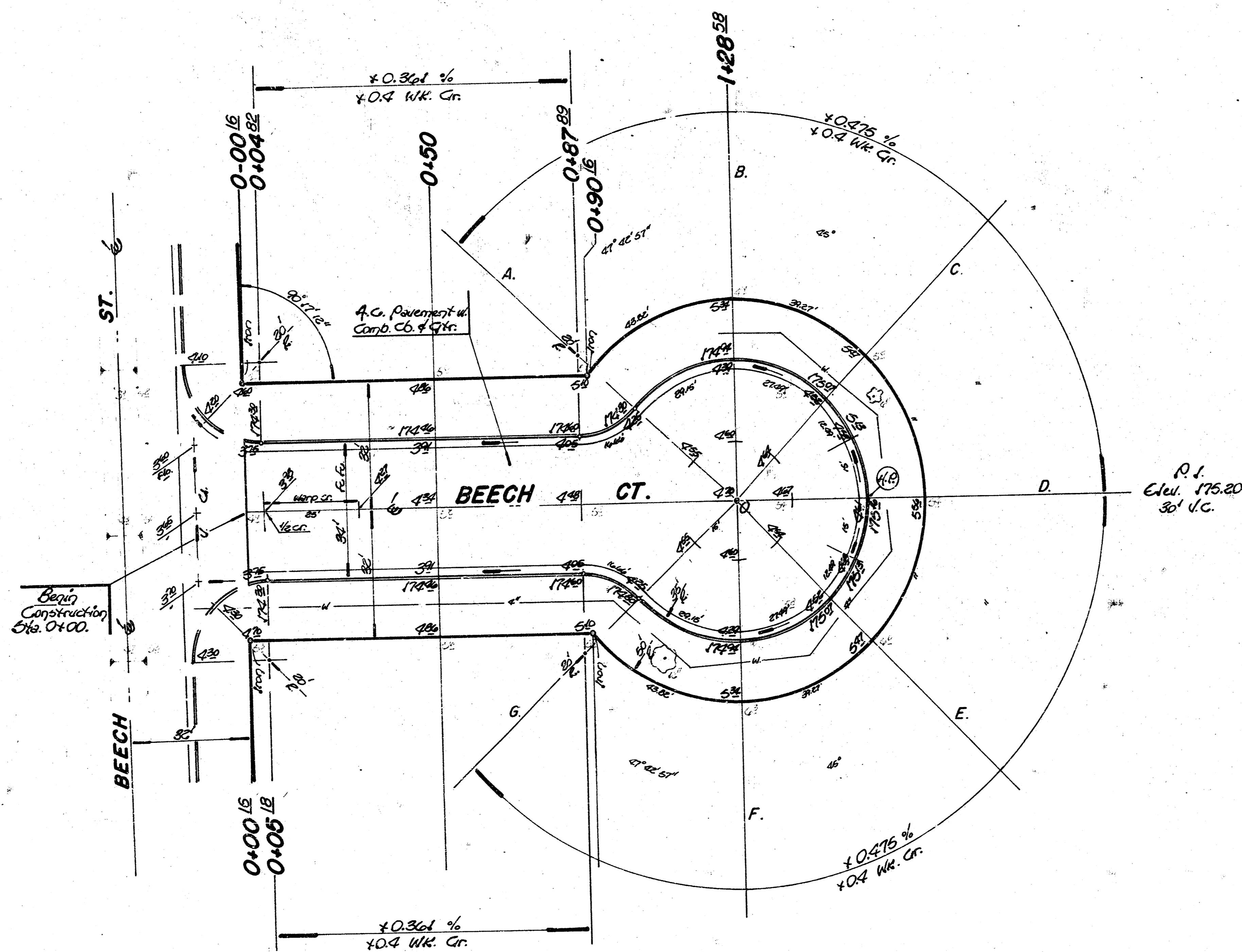
ROLL TYPE CURB & GUTTER



CITY OF WICHITA KANSAS

DEPARTMENT of PUBLIC WORKS - Engineering
Division

B.M. 174.22 S.E. Cor. Conc. Patch to # 9220 Furston.



Scale: 1" = 20'

Note:
 Trees to be taken and any "stumps" moved or destroyed due to construction shall be replaced.
 This project to be co-ordinated with that of Beech St.
 Trees are to be undisturbed during construction unless notice is received otherwise from the Engineer.
 No more than 6-20' drives.

Earthwork Quantities

Excavation = 557.5 cy	Compacted Fill = 0 cy
+ 10.8 cy	
Total = 568.3 cy	
Manipulation = 538.8 cy	

BEECH CT.
 472-76-245-80949-000-000-001

Survey - 842
Plan - 842
Design - 842