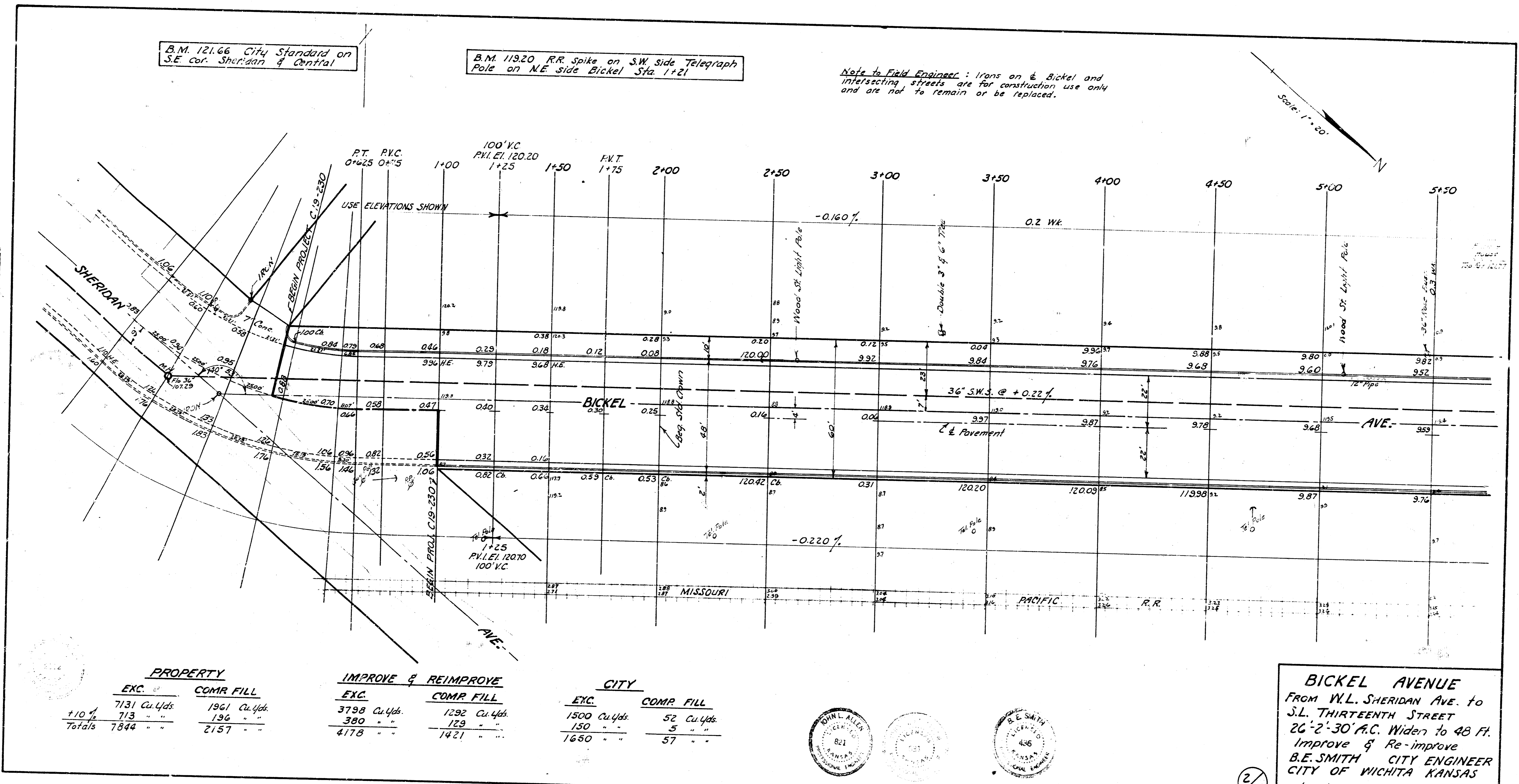
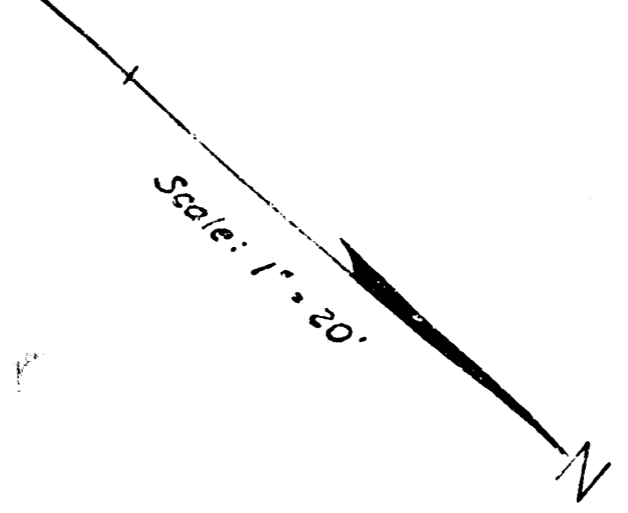


B.M. 121.66 City Standard on
S.E. cor. Sheridan & Central

B.M. 119.20 R.R. Spike on SW side Telegraph
Pole on NE side Bickel Sta 1+21

Note to Field Engineer: Irons on & Bickel and
intersecting streets are for construction use only
and are not to remain or be replaced.

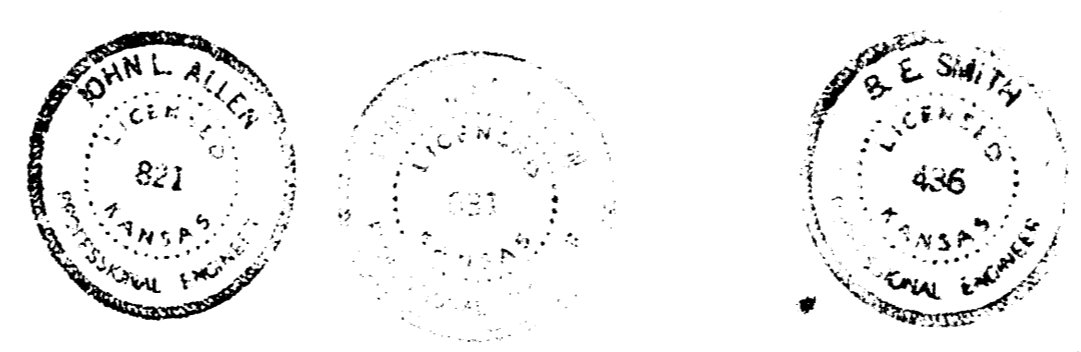


PROPERTY	EXC.		COMR. FILL	
	Exc.	Fill	Exc.	Fill
+10'	7131 Cu.Yds.	1961 Cu.Yds.	713	196
Totals	7844	2157		

IMPROVE & REIMPROVE			
EXC.		COMR. FILL	
Exc.	Fill	Exc.	Fill
3798 Cu.Yds.	1292 Cu.Yds.	390	129
4178	1421		

CITY			
EXC.		COMR. FILL	
Exc.	Fill	Exc.	Fill
1500 Cu.Yds.	52 Cu.Yds.	150	5
1650	57		

BICKEL AVENUE
FROM W.L. SHERIDAN AVE. TO
S.L. THIRTEENTH STREET
26'-2'-30" A.C. WIDEN TO 48 FT.
IMPROVE & RE-IMPROVE
B.E. SMITH CITY ENGINEER
CITY OF WICHITA KANSAS
Date: June 1917 Proj. No. C19-230

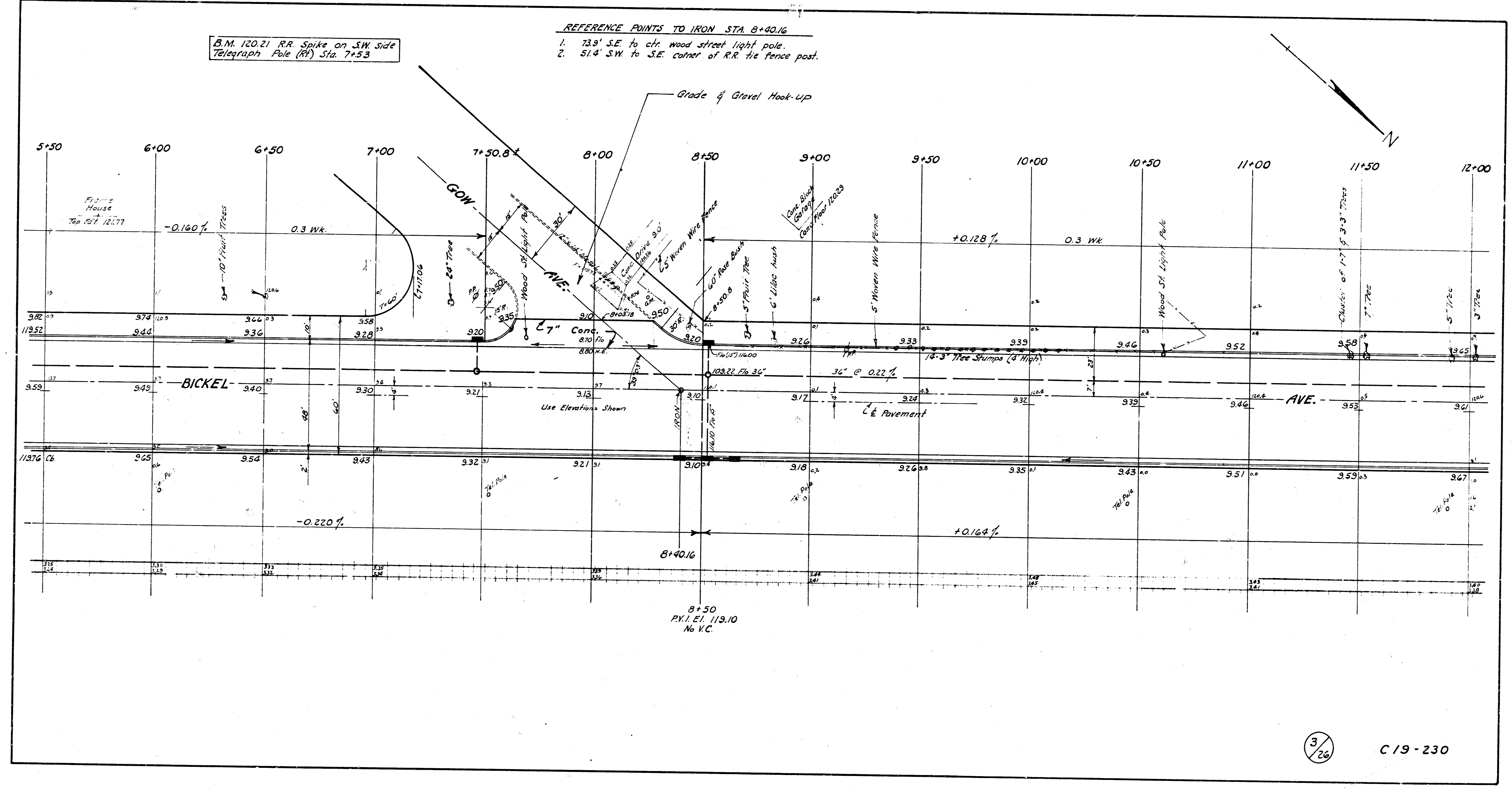


2/26

B.M. 12021 R.R. Spike on SW side
Telegraph Pole (R.R.) Sta. 7+53

REFERENCE POINTS TO IRON STA. 8+40.16

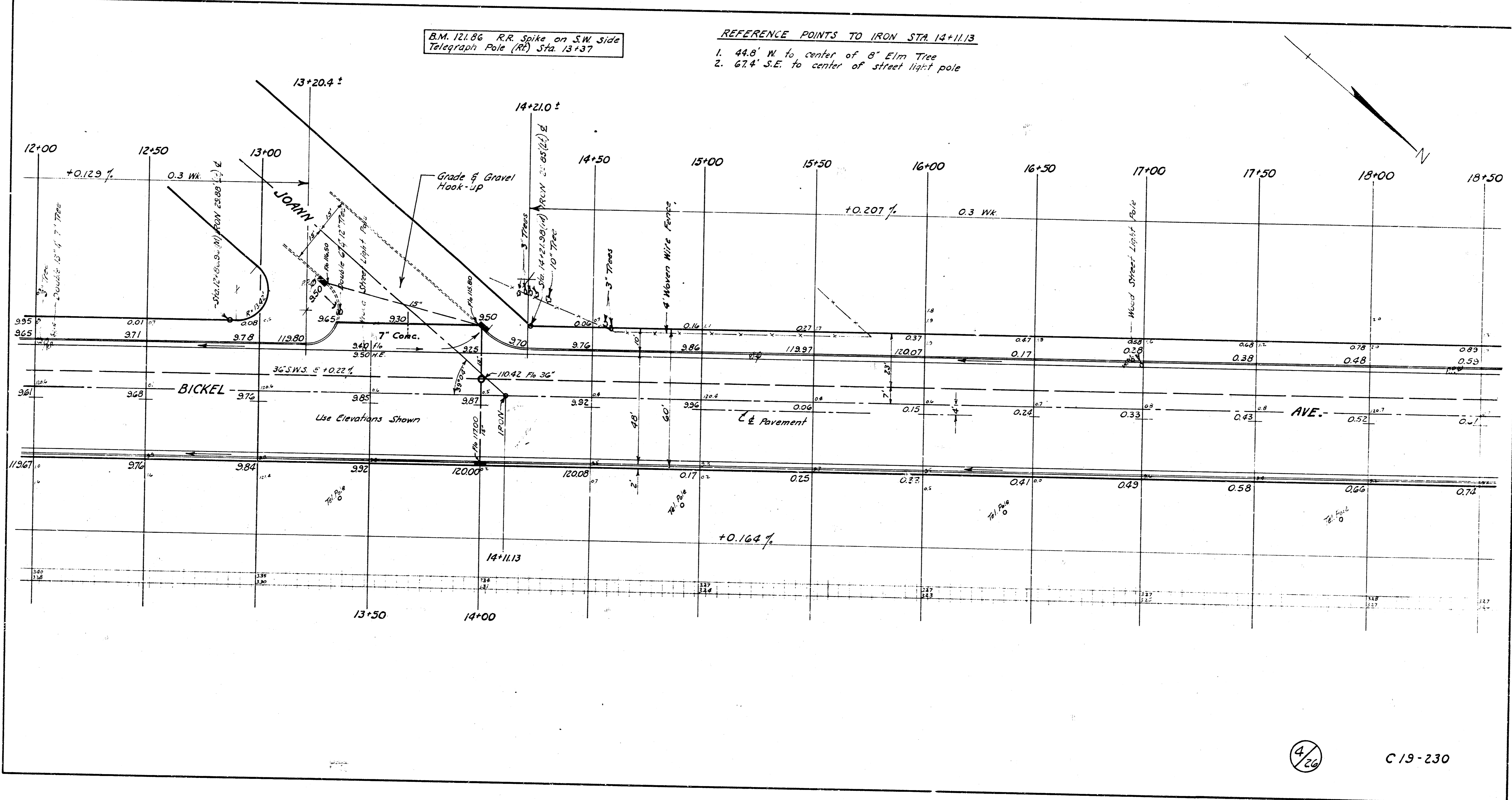
1. 73.9' S.E. to ch. wood street light pole.
2. 51.4' S.W. to S.E. corner of R.R. tie fence post.



8+50
P.Y. I. EL. 119.10
No K.C.

3/26

C 19 - 230



B.M. 121.86 R.R. Spike on S.W. side
Telegraph Pole (Rt) Sta. 13+37

REFERENCE POINTS TO IRON STA 14+11.3

1. 44.8' W to center of 8" Elm Tree
2. 67.4' S.E. to center of street light pole

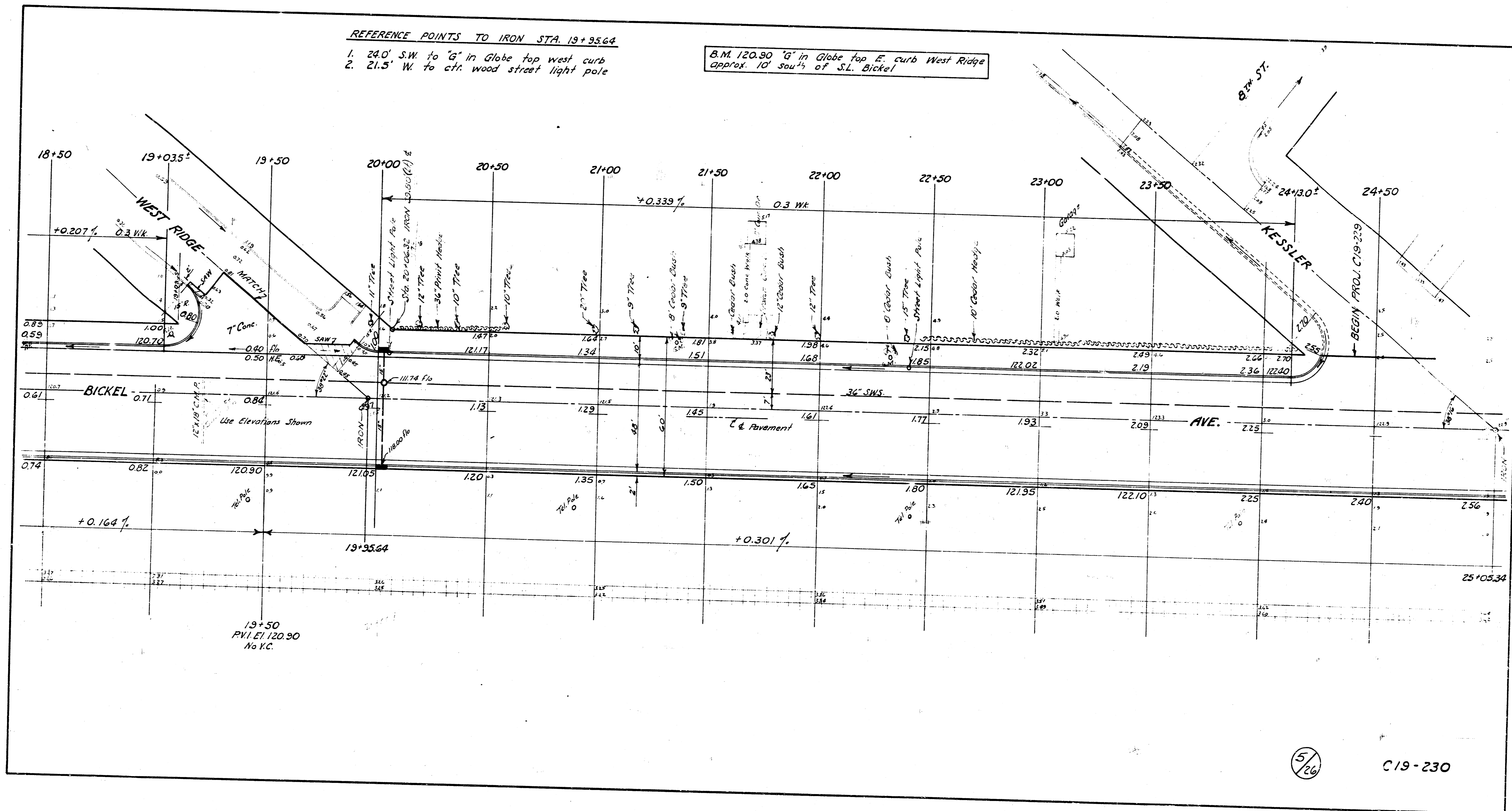
4/26

C 19-230

REFERENCE POINTS TO IRON STA. 19+35.64

1. 24.0' S.W. to 'G' in Globe top west curb
2. 21.5' W. to ch. wood street light pole

B.M. 120.90 'G' in Globe top E. curb West Ridge approx. 10' south of S.L. Bickel



5/26

C19-230

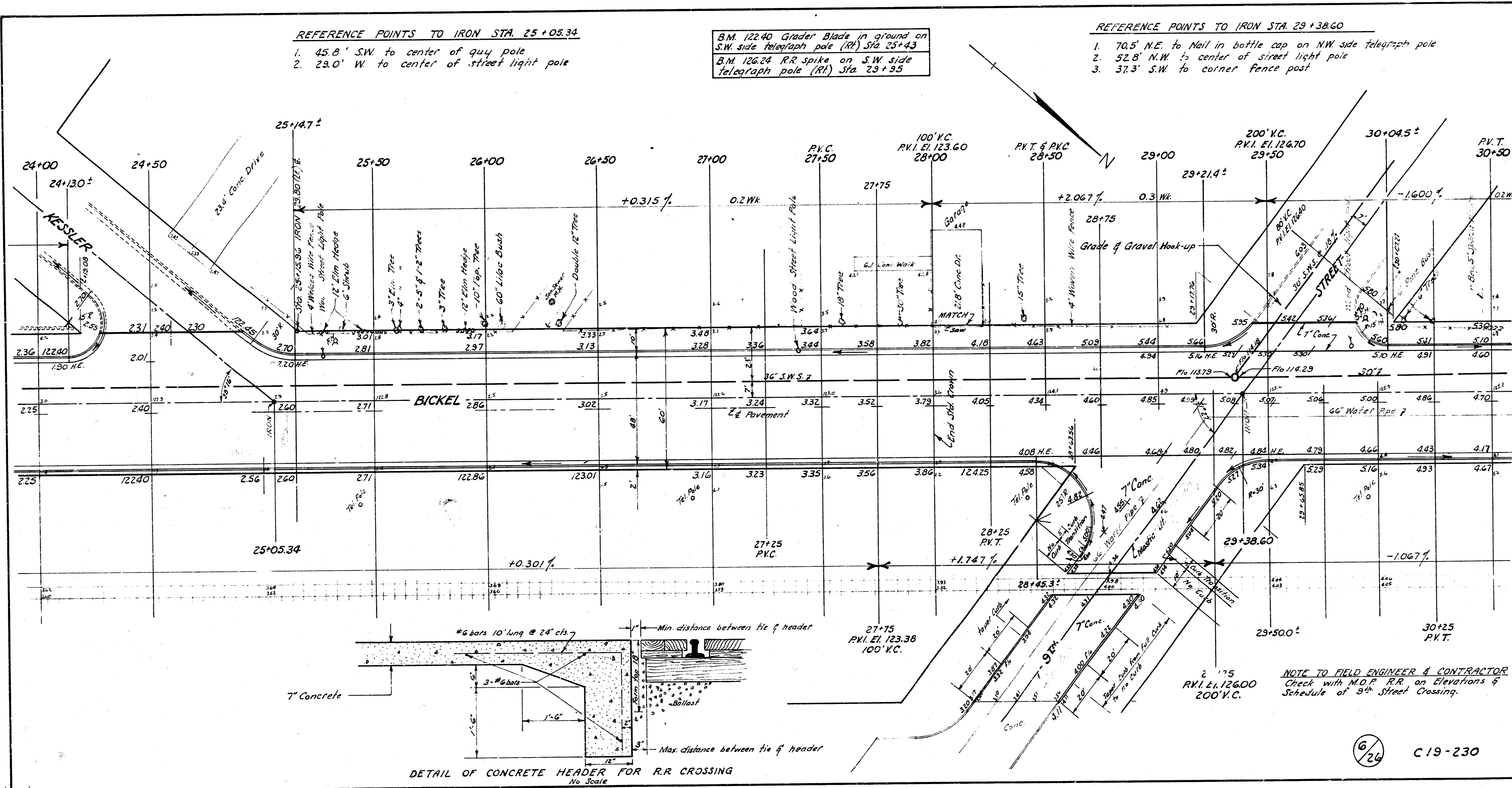
REFERENCE POINTS TO IRON STA. 25+05.34

- 45.8' SW to center of guy pole
- 29.0' W to center of street light pole

B.M. 122.40 Grader Blade in ground on S.W. side telegraph pole (RI) Sta 25+43
 B.M. 126.24 RR spike on S.W. side telegraph pole (RI) Sta 29+35

REFERENCE POINTS TO IRON STA. 29+38.60

- 70.5' N.E. to Nail in bottle cap on NW side telegraph pole
- 52.8' N.W. to center of street light pole
- 37.3' S.W. to corner fence post

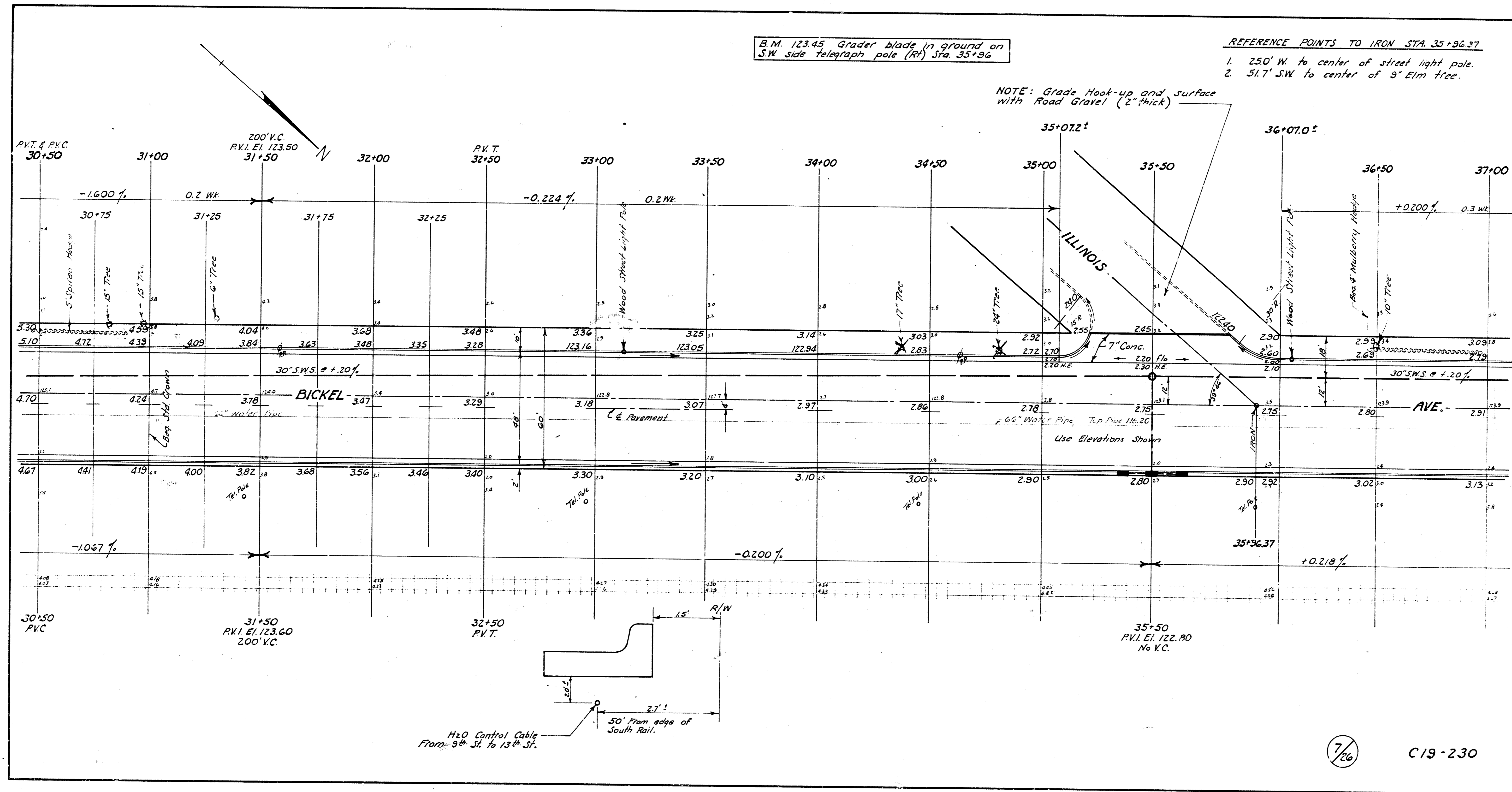


B.M. 123.45 Grader blade in ground on S.W. side telegraph pole (Rt) Sta. 35+96

REFERENCE POINTS TO IRON STA. 35+96.37

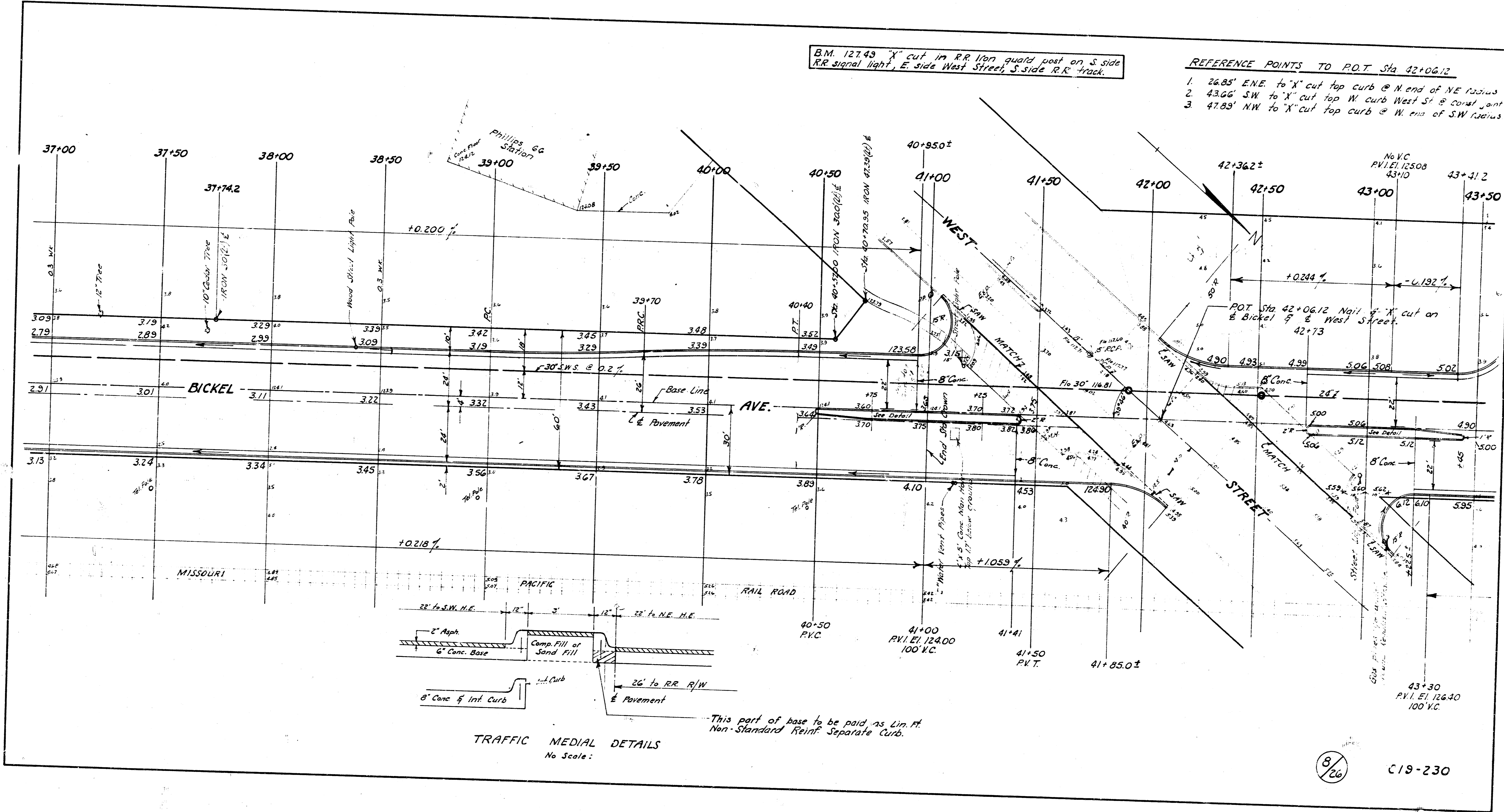
1. 250' W. to center of street light pole.
2. 51.7' SW to center of 9' Elm tree.

NOTE: Grade Hook-up and surface with Road Gravel (2" thick)

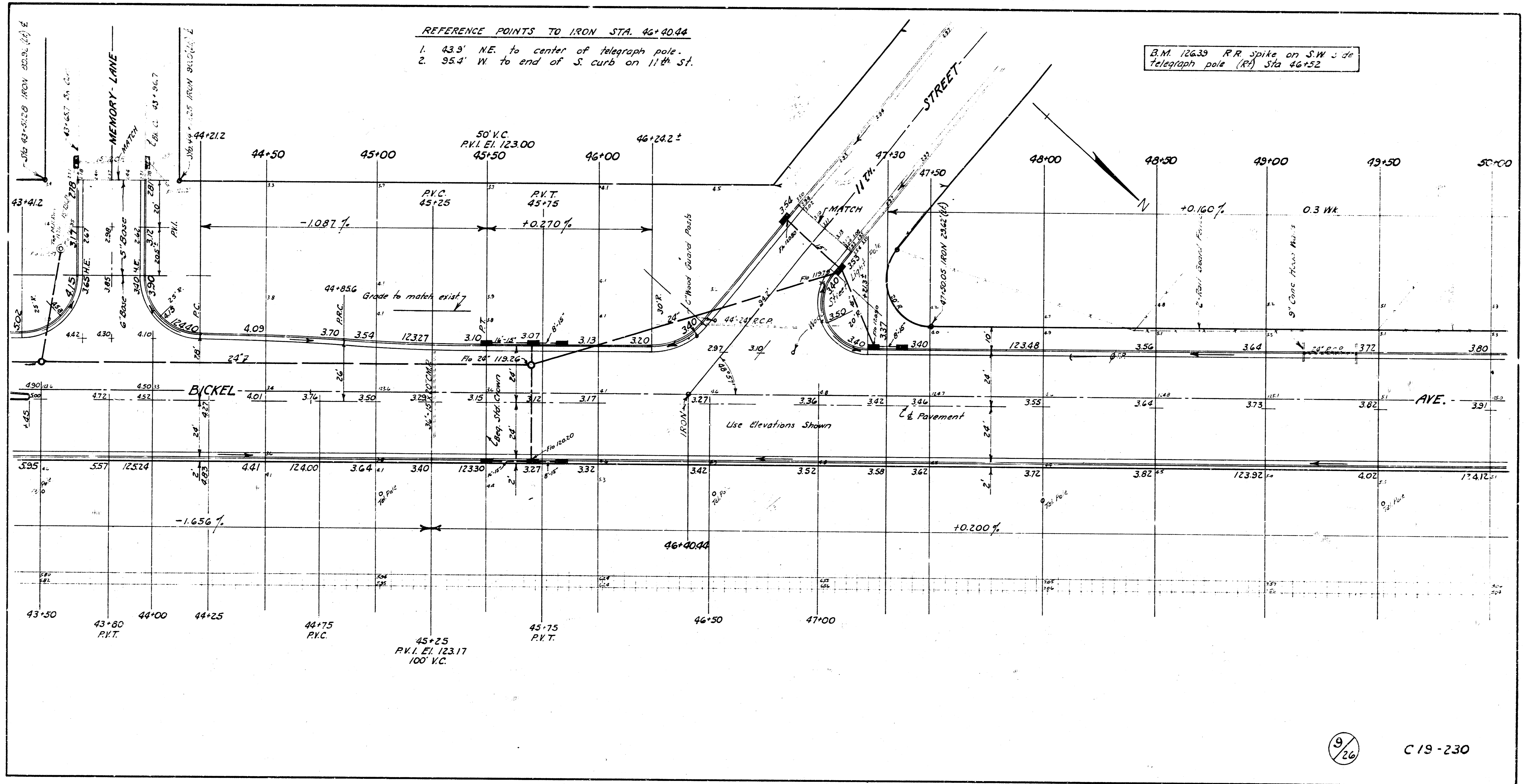


B.M. 12749 "X" cut in RR iron guard post on S side RR signal light, E side West Street, S side R.R. track.

- REFERENCE POINTS TO P.O.T. Sta 42+06.12
1. 26.85' ENE. to "X" cut top curb @ N end of NE Curves
 2. 43.66' SW to "X" cut top W curb West St @ Corral Joint
 3. 47.89' NW to "X" cut top curb @ W end of SW Curves



TRAFFIC MEDIAL DETAILS
No Scale:



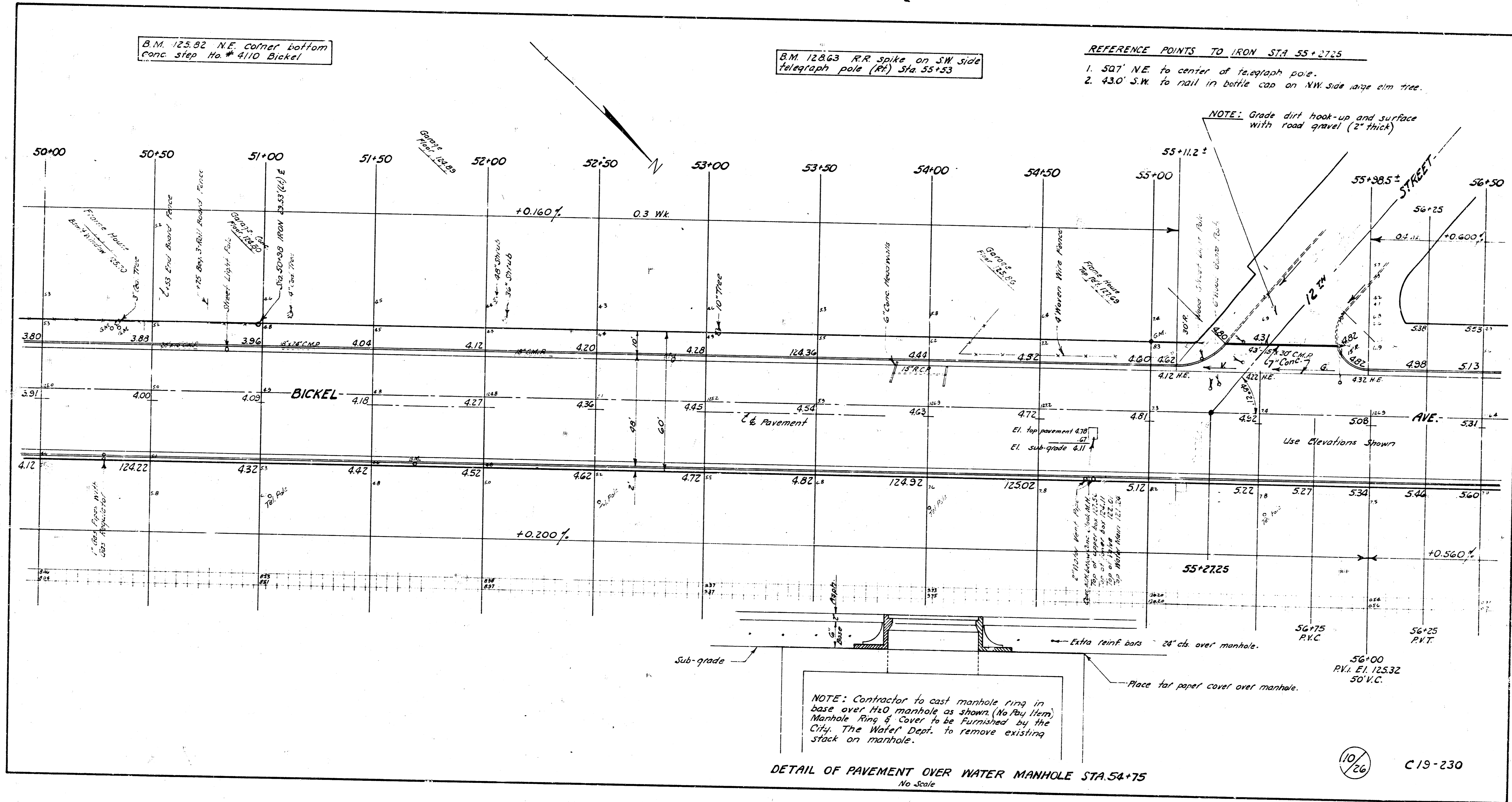
B.M. 125.82 N.E. corner bottom
conc. step No. 4110 Bickel

B.M. 128.63 R.R. spike on SW side
telegraph pole (Rt) Sta. 55+53

REFERENCE POINTS TO IRON STA. 55+27.25

- 507' N.E. to center of telegraph pole.
- 430' S.W. to nail in bottle cap on NW side large elm tree.

NOTE: Grade dirt hook-up and surface
with road gravel (2" thick)

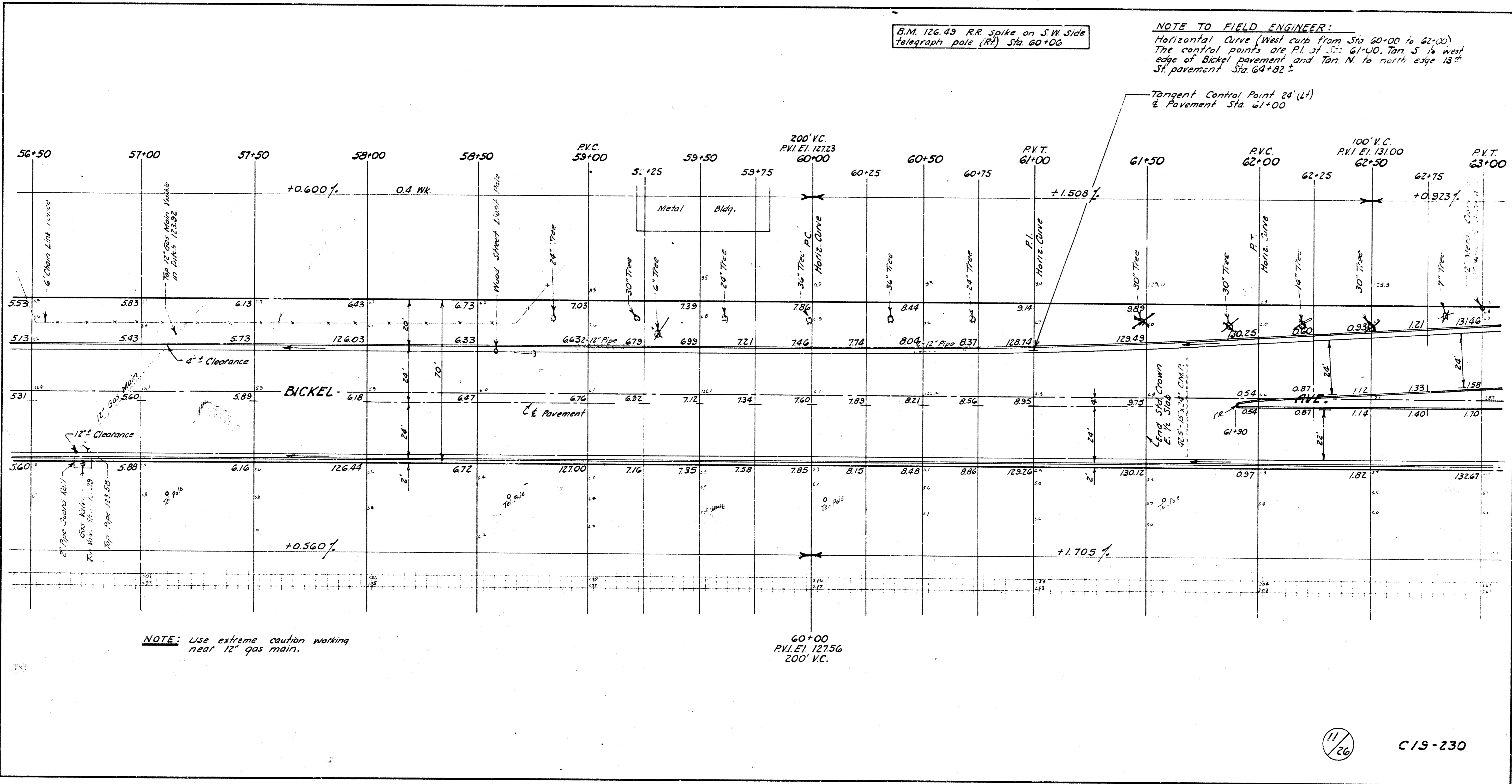


B.M. 126.49 R.R. Spike on S.W. Side
Telegraph pole (RP) Sta. 60+06

NOTE TO FIELD ENGINEER:

Horizontal Curve (West curb from Sta 60+00 to 62+00)
The control points are P.I. 31.71: 61+00, Tan S 1/4 west
edge of Bickel pavement and Tan. N to north edge 13"
St. pavement Sta. 64+82 ±

Tangent Control Point 24' (L)
& Pavement Sta. 61+00



NOTE: Use extreme caution working
near 12" gas main.

60+00
P.V.I. E.I. 127.56
200' V.C.

11/26

C/S-230

