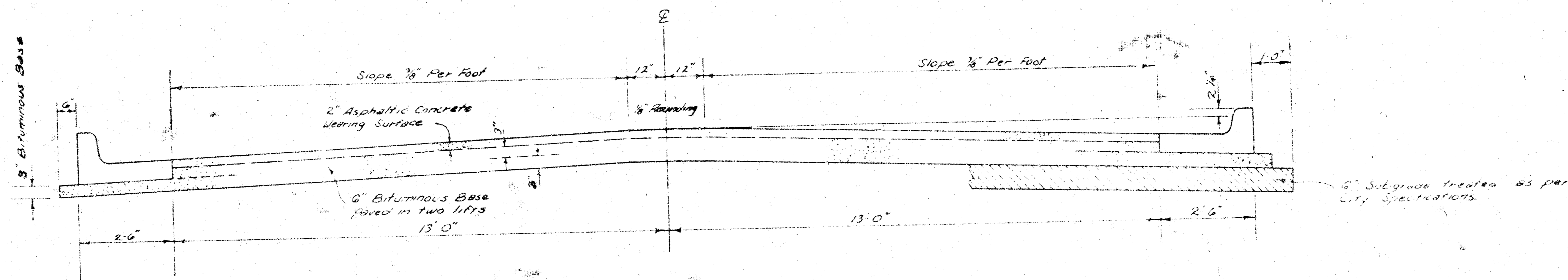


**BIRCH LANE
E.L. TOH-N-HAH TRAIL TO
E. L. BLOCKS A & B, BARTLETT ADD_n**



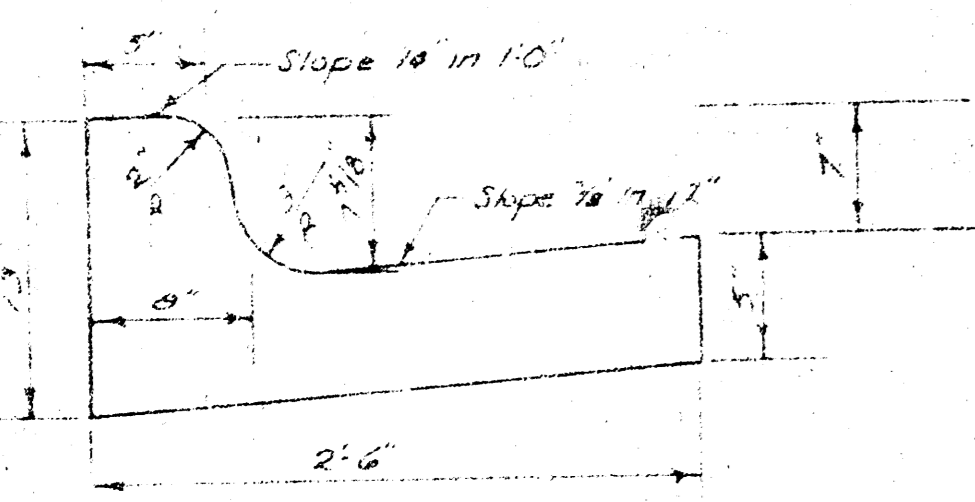
TYPICAL SECTION

3' ASPHALTIC CONCRETE PAVEMENT WITH BITUMINOUS BASE

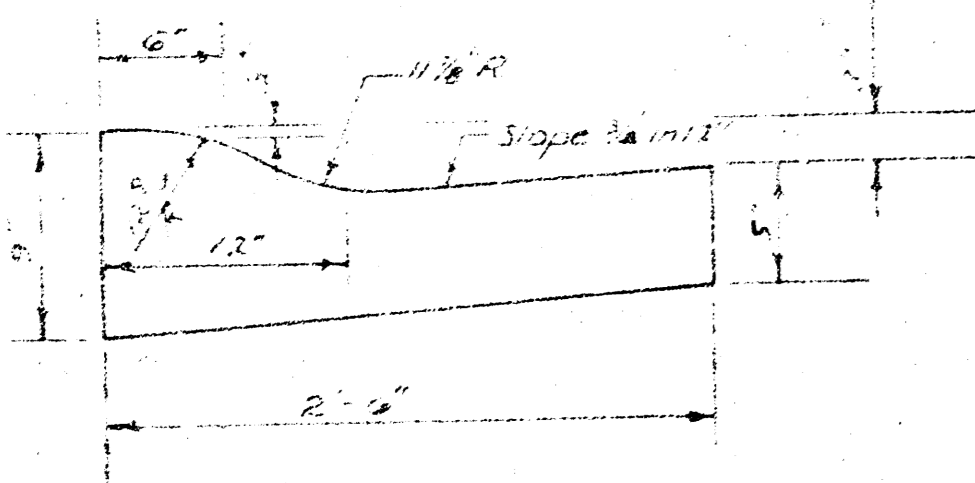
A TACK COAT OF EMULSIFIED ASPHALT (SS-IH) SHALL BE APPLIED AT AN APPROXIMATE RATE OF 0.05 GALLONS PER SQ. YD. BETWEEN LIFTS OF ASPHALTIC MATERIALS WHEN ORDERED BY THE ENGINEER. TACK COAT WILL NOT BE PAID FOR DIRECTLY AND SHALL BE CONSIDERED AS SUBSIDIARY TO PRICE BID FOR ASPHALTIC PAVEMENT. BITUMINOUS BASE AND ASPHALTIC CONCRETE WEARING SURFACE SHALL BE PLACED WITH A LAYDOWN MACHINE HAVING AUTOMATIC ELECTRONIC CONTROLS FOR CROWN AND GRADE. CONSTRUCTION JOINTS IN EACH LIFT SHALL BE STAGGERED A MINIMUM DISTANCE OF 1' WITH JOINTS IN PRECEDING LIFTS AND SUCH THAT A JOINT WILL BE CONSTRUCTED ON THE PAVEMENT CENTERLINE IN THE TOP LIFT.

The AC pavement between the Comb. Curb & Gutter shall be paid as 3" AC pavement (6 Bituminous Base). The Bituminous Base under the Comb. Curb & Gutter shall be paid as 3" Bituminous Base.

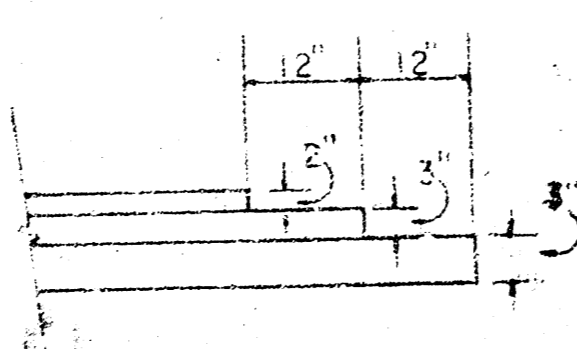
COMBINED CURB & GUTTER



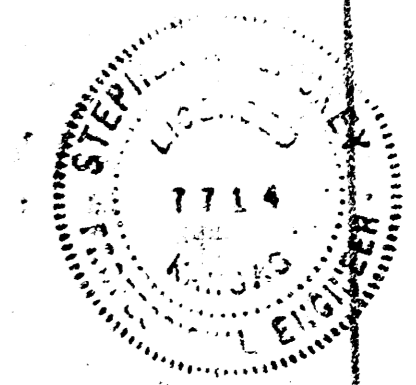
ROLL TYPE CURB & GUTTER



DETAIL OF TRANSVERSE CONSTRUCTION JOINTS



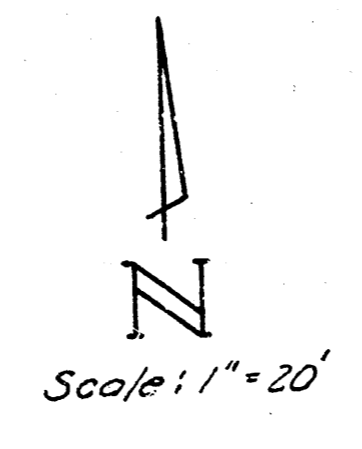
TRANSVERSE CONSTRUCTION JOINTS SHALL BE CONSTRUCTED IN FLEXIBLE BASE PAVEMENTS AT LOCATIONS WHERE PAVEMENT TEMPORARILY ENDS TO FACILITATE FUTURE PAVEMENT CONSTRUCTION AS SHOWN BY DETAIL. THE COST OF CONSTRUCTING THE TRANSVERSE CONSTRUCTION JOINTS SHALL NOT BE MEASURED OR PAID FOR DIRECTLY BUT SHALL BE INCLUDED IN THE BID PRICE FOR SQUARE YARDS OF ASPHALTIC CONCRETE PAVEMENT.



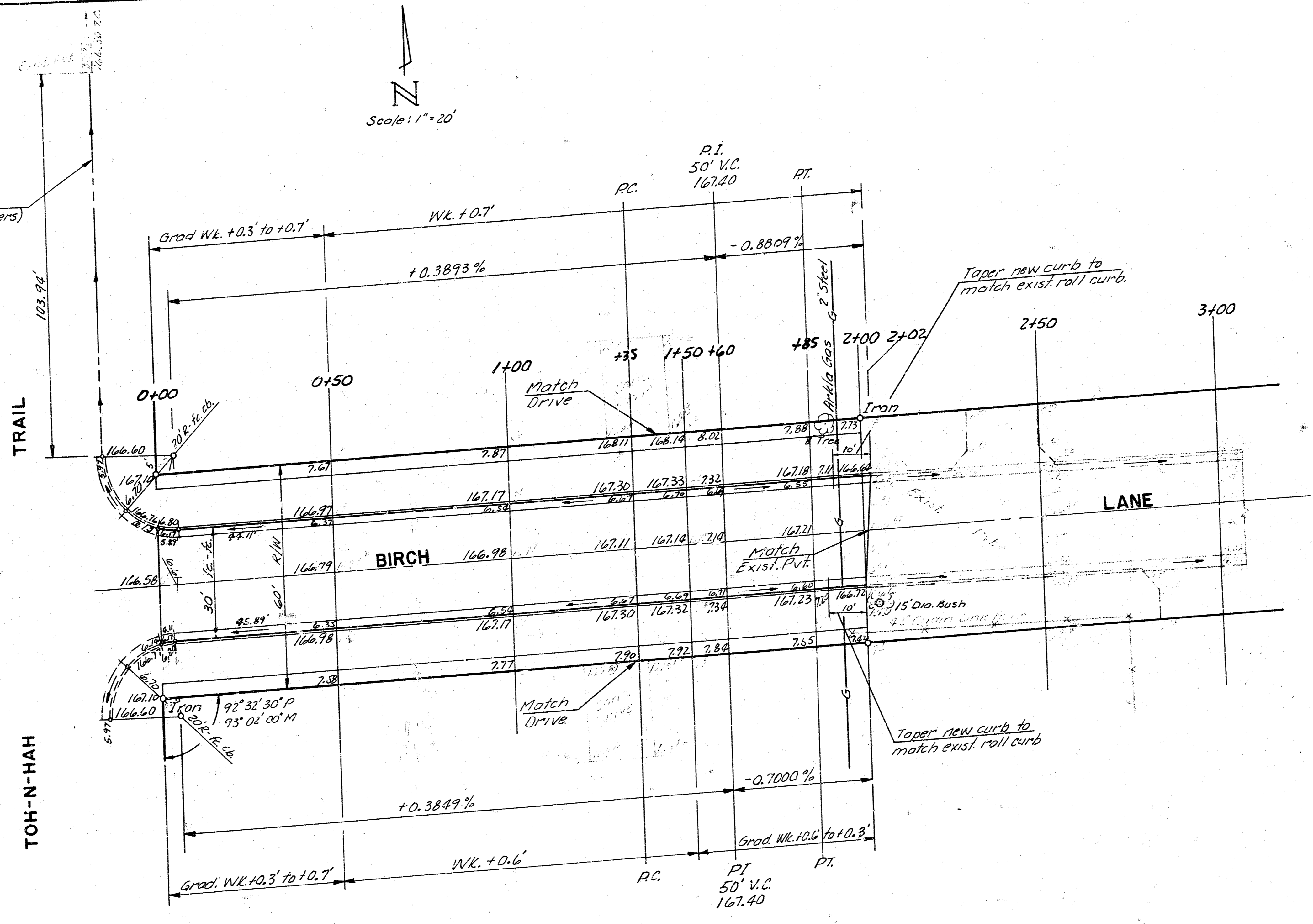
1/3

CITY OF WICHITA, KANSAS
DEPARTMENT OF PUBLIC WORKS — ENGINEERING
R. W. LINN CITY ENGINEER
DATE
PROJ. NO. 472 76 245 80561 000 000 001

B.M. 166.78 N.W. Cor. Conc. Patch # 856 Toh-N-Hah Trail



Cut ditch to drain Birch Lane (By Others)



Survey M.S.L.
Plan 2452
Ext.
Checked

SUB-GRADE
TYPE OF SUB-GRADE TREATMENT SHALL BE DETERMINED BY THE FIELD ENGINEER. SUB-GRADE TREATMENT MAY CONSIST OF LIME TREATMENT, CEMENT TREATMENT, SUB-GRADE MODIFICATION, OR ANY COMBINATION OF THESE.

CAUTION
UNDERGROUND UTILITIES
Please check for all utilities before construction.
Tel. phone 361-3111

Earthwork Quantities
Excavation
+10% 448.2 C.Y.
-10% 44.8
Total 493.0 C.Y.

Total Manipulation 737.0 S.Y.

BIRCH LANE
E.L. TOH-N-HAH TRAIL TO
E.L. BLOCKS A&B BARTLETT ADDN
CITY OF WICHITA, KANSAS
R.W. LINN CITY ENGINEER
DATE
PROJ. NO. 472 76 245 80551 000 000 001