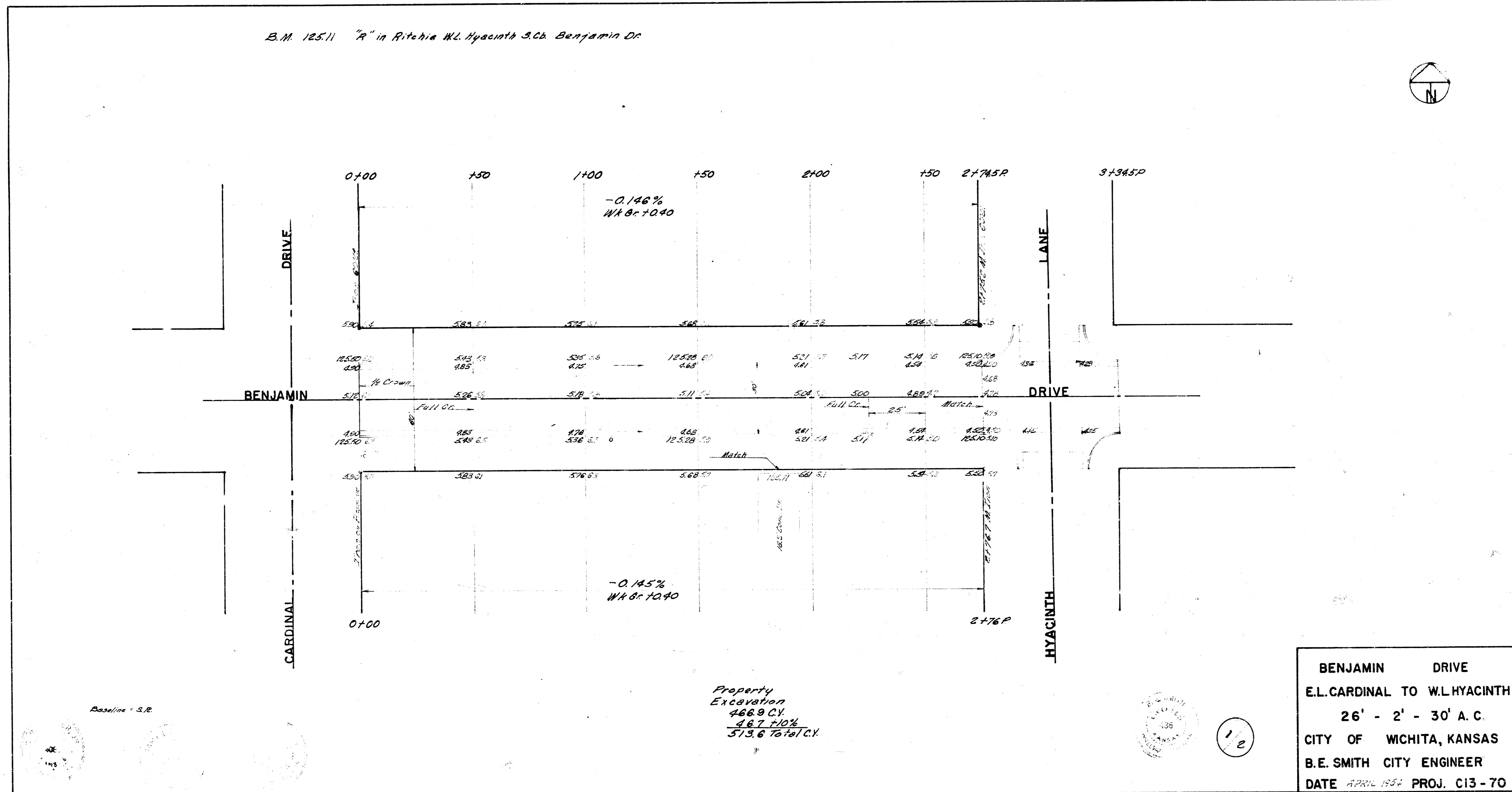
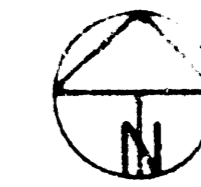


B.M. 125.11 "A" in Rite-his W.L. Hyacinth 3.06 Benjamin Dr



BENJAMIN DRIVE
 E.L. CARDINAL TO W.L. HYACINTH
 26' - 2' - 30' A.C.
 CITY OF WICHITA, KANSAS
 B.E. SMITH CITY ENGINEER
 DATE APRIL 1954 PROJ. C13-70