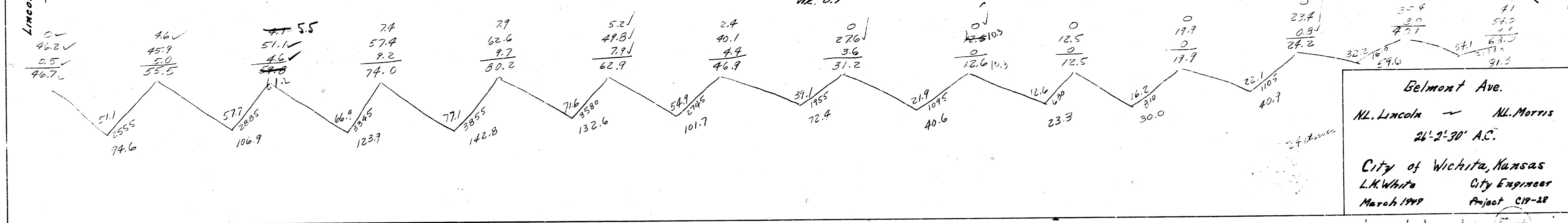
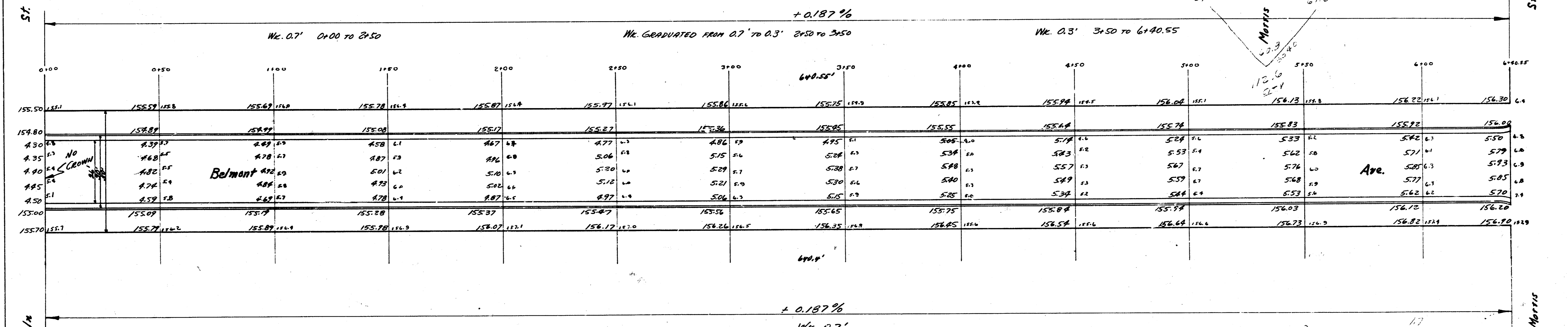
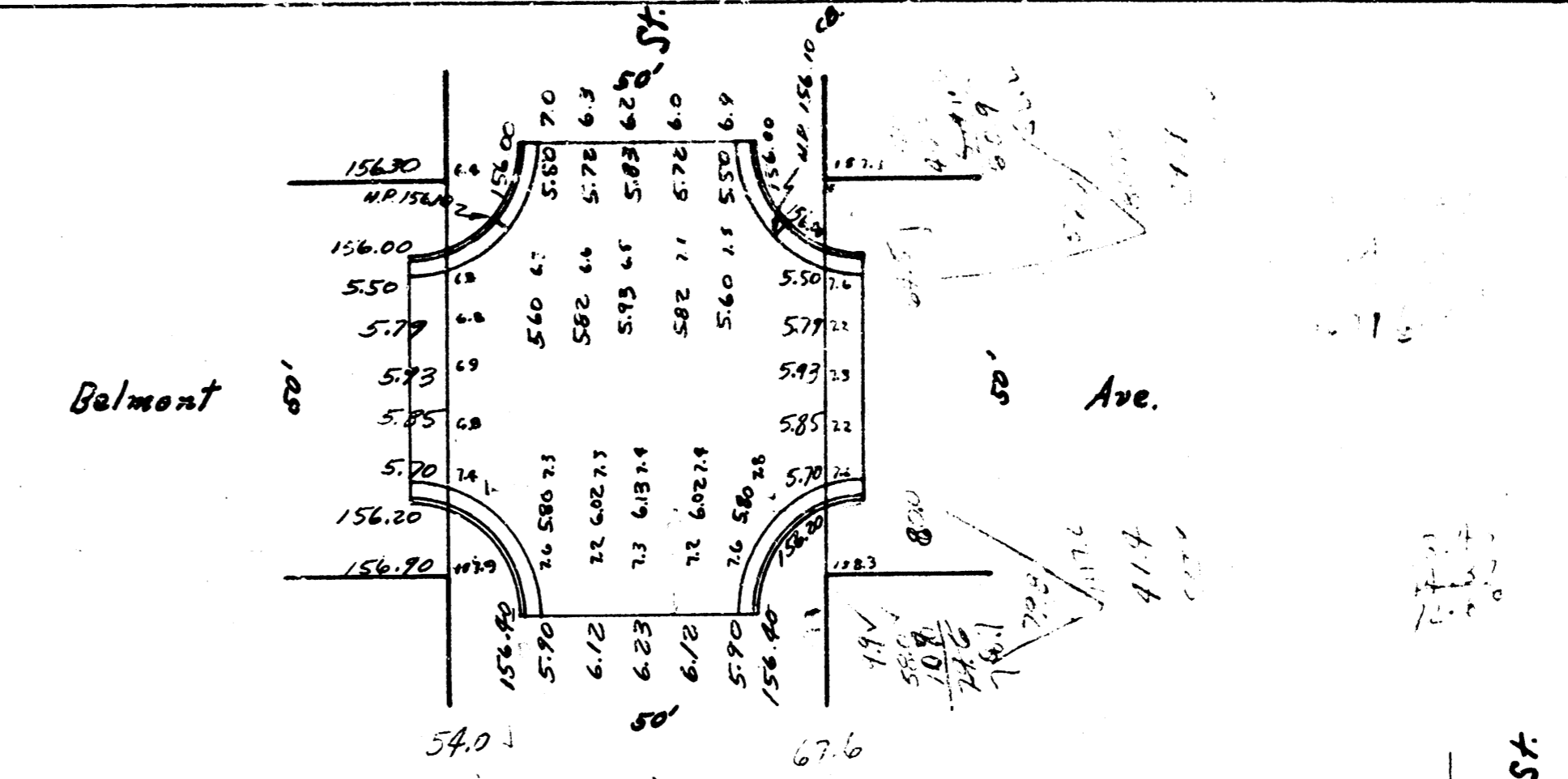


B.M. 157.64 R.R. spike in P.P. S.W. corner Morris & Belmont.
 B.M. 156.79 S.W. Corner conc. porch No. 852 S. Belmont.
 B.M. 156.85 N.W.

PROPERTY	CITY
74.6	112.6
126.7	41.4
123.7	29.9
142.8	153.7
132.6	+10.76
101.7	
72.4	
48.6	
33.3	
30.0	
40.9	
54.6	
81.3	
1053.6	
+10.76	
1155.7	



Belmont Ave.
 N.L. Lincoln - N.L. Morris
 26'-2'-30" A.C.
 City of Wichita, Kansas
 L.H. White City Engineer
 March 1949 Project C19-28