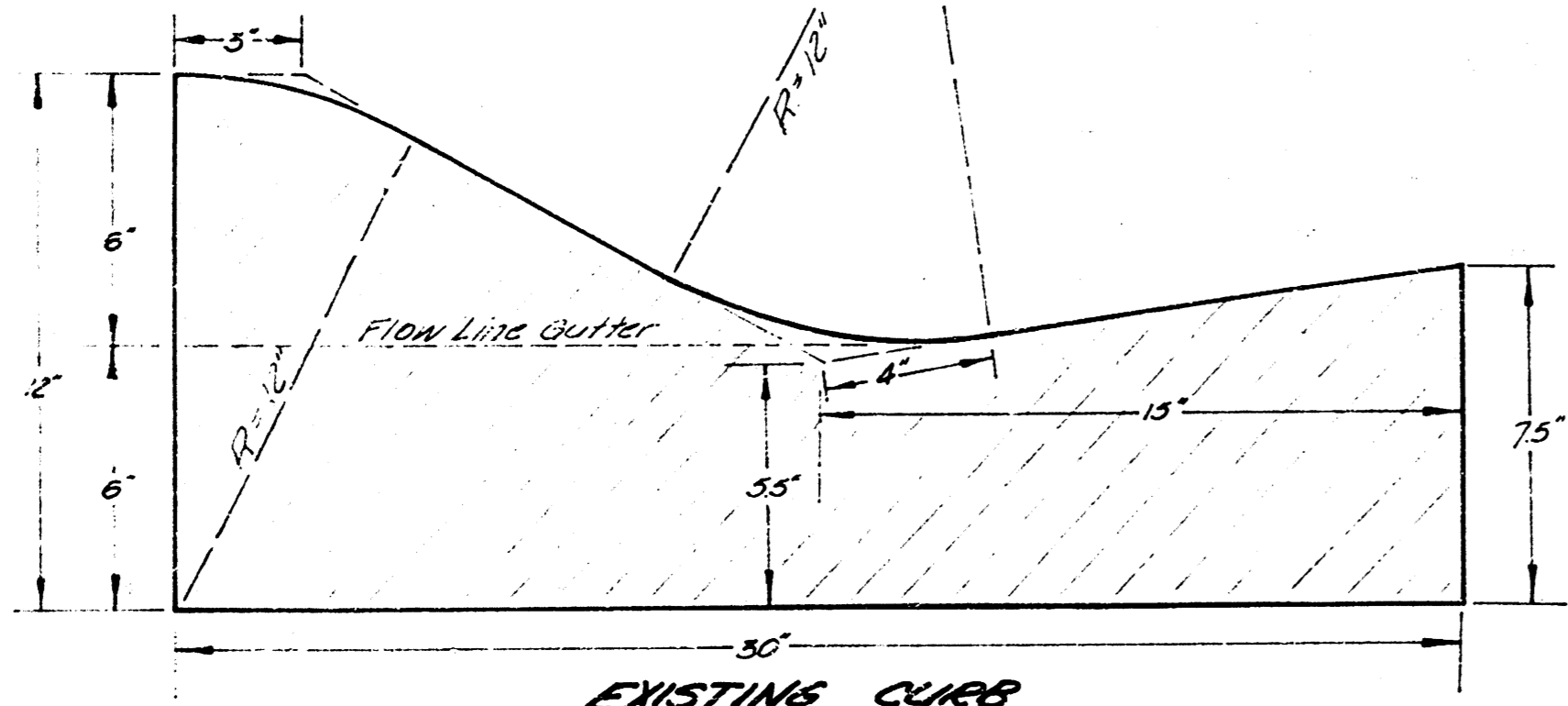
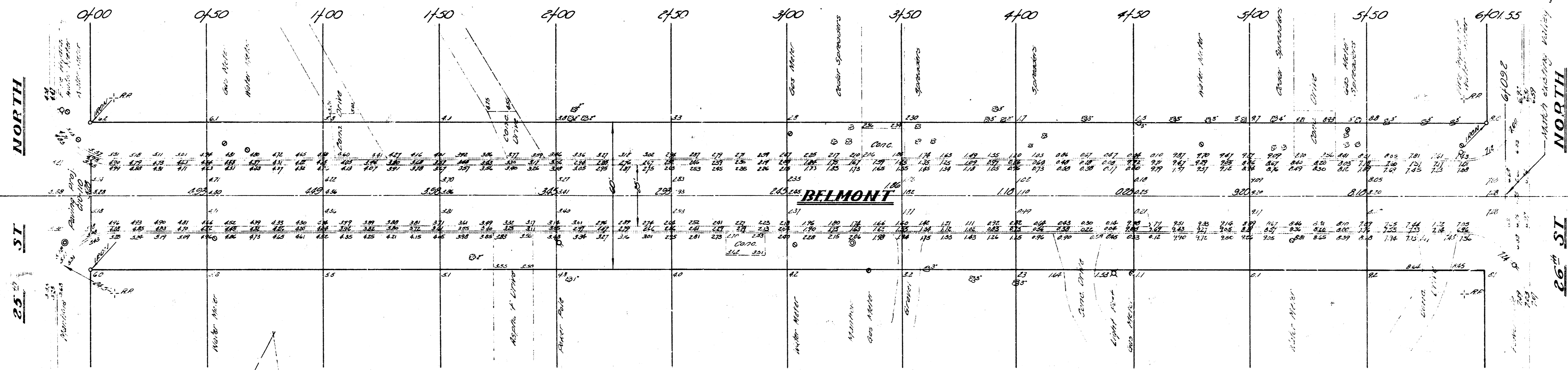
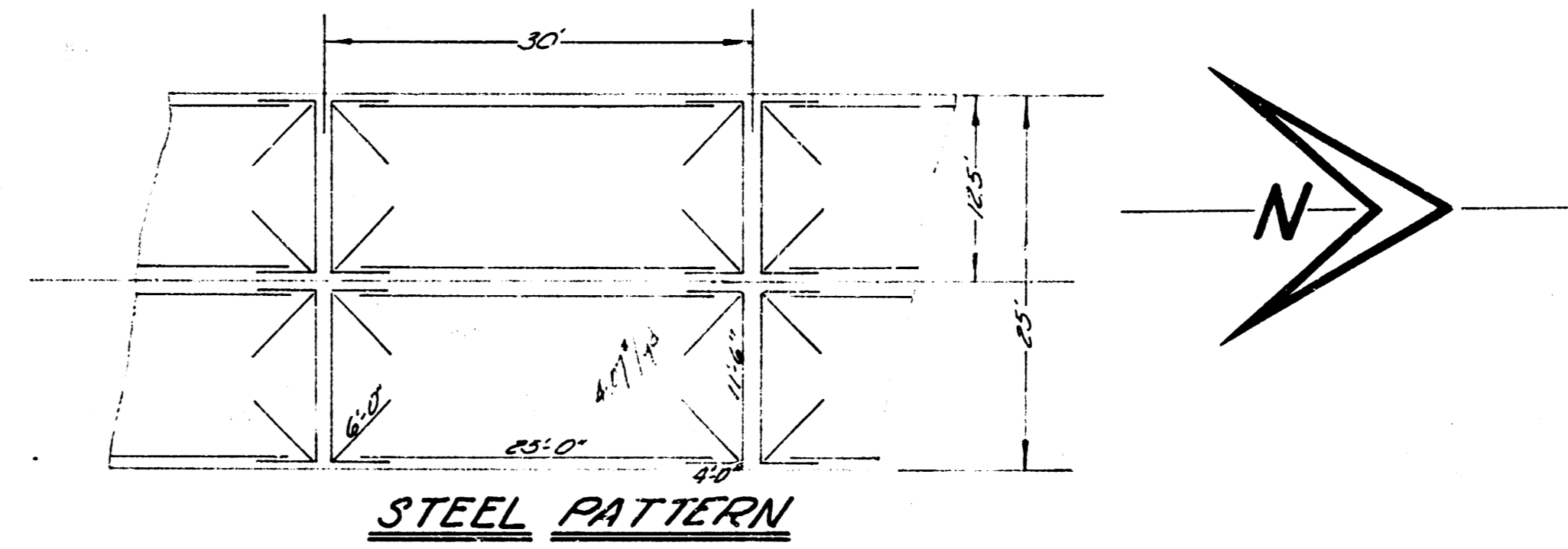
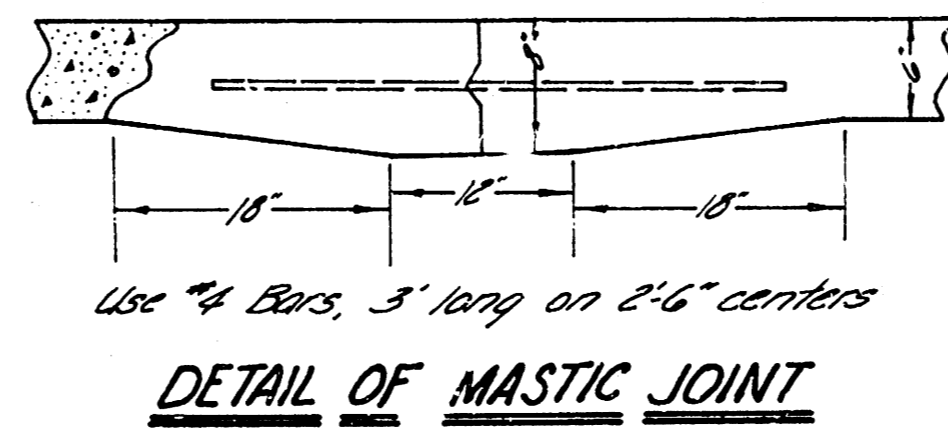
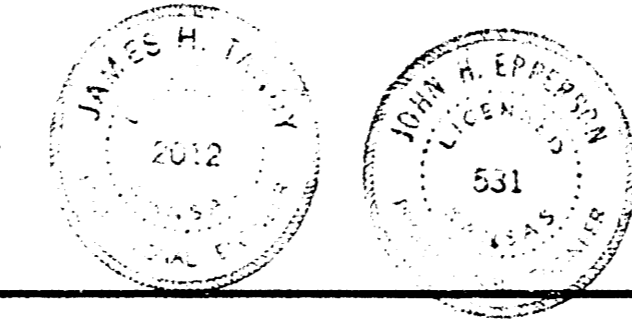
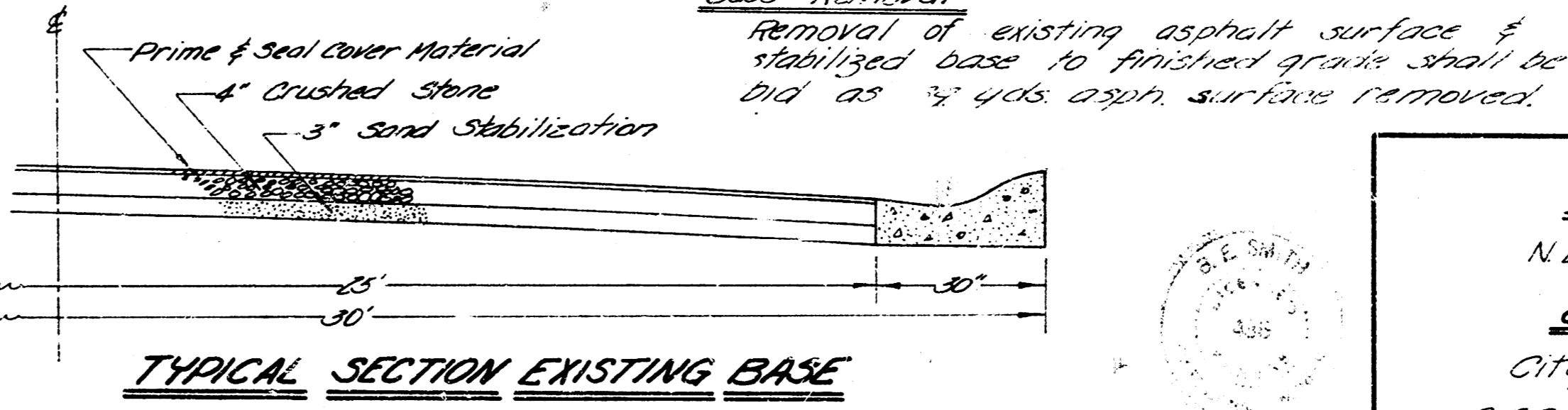


BM 177.55 N.E. Cor Conc. Step, Ho # 2551 Belmont.
 C.M. 174.78 Step Bench in Power Pole 19' Rt of 270.

Note to Contractor:
 Consult property owners about constructing ramp
 type drives in place of existing roll curb approaches.
 If desired, the owner may authorize (in writing)
 removal of the roll curb in front of existing drives
 and the subsequent replacement with a 4'-ramp-
 type opening. All driveway replacement to be approved
 by the city field engineer prior to construction.



Note:
 New 6" concrete pavement to match
 high edge of existing curb &
 gutter throughout length of project



BELMONT
 N.L. 25th to S.L. 26th
25' Concrete
 City of Wichita, Kansas
 B.E. Smith City Engineer
 Date: MAY 1961 Proj No 010-109