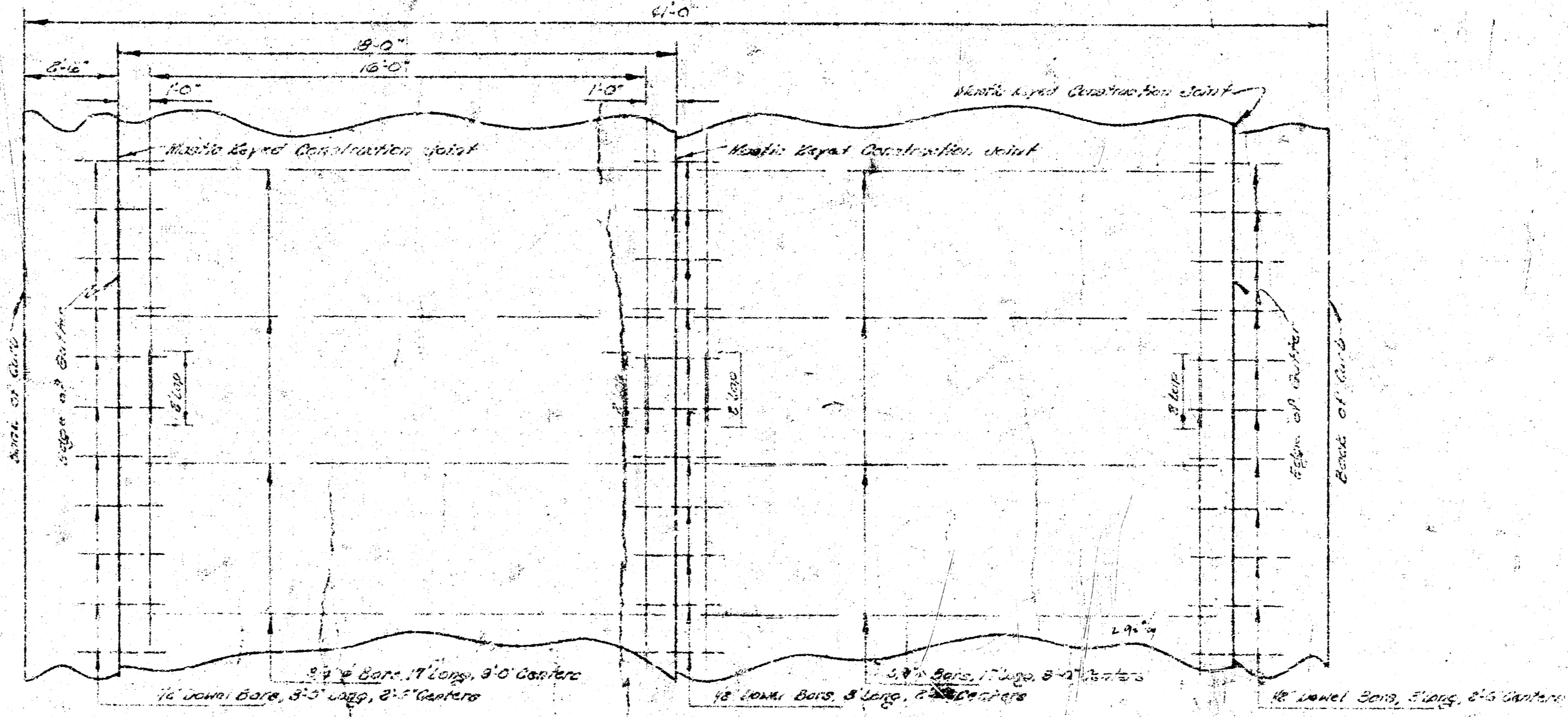


TYPICAL SECTION  
NOT TO SCALE



STEEL PATTERN  
USE 3/4" Ø BARS EXCEPT WHERE NOTED  
NOT TO SCALE

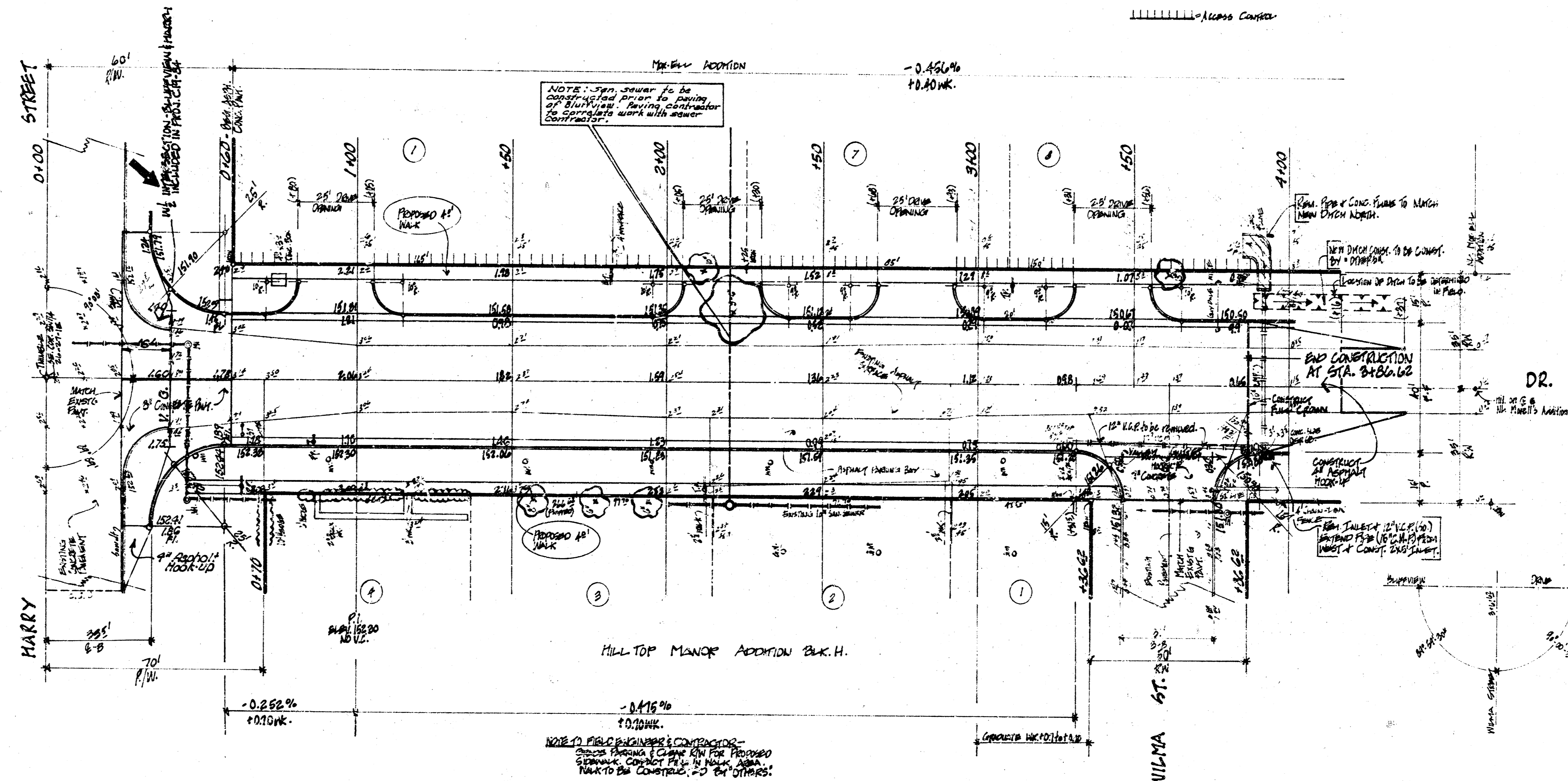
352 F-1002  
3/18/41 R.S.V.

"BLUFFVIEW DRIVE"  
NO. PERRY STREET TO N.W. MILWAU STREET  
C19-82 (2/3)

R.S.V.  
1-11-41

Survey of Bluffview Drive  
Plan  
Checked  
Date

BLUFFVIEW



ITEM	QUANTITY	UNIT
2.83	137	CY
2.84	100	CY
2.85	137	CY
2.86	137	CY
2.87	137	CY
2.88	137	CY
2.89	137	CY
2.90	137	CY
2.91	137	CY
2.92	137	CY
2.93	137	CY
2.94	137	CY
2.95	137	CY
2.96	137	CY
2.97	137	CY
2.98	137	CY
2.99	137	CY
3.00	137	CY
3.01	137	CY
3.02	137	CY
3.03	137	CY
3.04	137	CY
3.05	137	CY
3.06	137	CY
3.07	137	CY
3.08	137	CY
3.09	137	CY
3.10	137	CY
3.11	137	CY
3.12	137	CY
3.13	137	CY
3.14	137	CY
3.15	137	CY
3.16	137	CY
3.17	137	CY
3.18	137	CY
3.19	137	CY
3.20	137	CY
3.21	137	CY
3.22	137	CY
3.23	137	CY
3.24	137	CY
3.25	137	CY
3.26	137	CY
3.27	137	CY
3.28	137	CY
3.29	137	CY
3.30	137	CY
3.31	137	CY
3.32	137	CY
3.33	137	CY
3.34	137	CY
3.35	137	CY
3.36	137	CY
3.37	137	CY
3.38	137	CY
3.39	137	CY
3.40	137	CY
3.41	137	CY
3.42	137	CY
3.43	137	CY
3.44	137	CY
3.45	137	CY
3.46	137	CY
3.47	137	CY
3.48	137	CY
3.49	137	CY
3.50	137	CY
3.51	137	CY
3.52	137	CY
3.53	137	CY
3.54	137	CY
3.55	137	CY
3.56	137	CY
3.57	137	CY
3.58	137	CY
3.59	137	CY
3.60	137	CY
3.61	137	CY
3.62	137	CY
3.63	137	CY
3.64	137	CY
3.65	137	CY
3.66	137	CY
3.67	137	CY
3.68	137	CY
3.69	137	CY
3.70	137	CY
3.71	137	CY
3.72	137	CY
3.73	137	CY
3.74	137	CY
3.75	137	CY
3.76	137	CY
3.77	137	CY
3.78	137	CY
3.79	137	CY
3.80	137	CY
3.81	137	CY
3.82	137	CY
3.83	137	CY
3.84	137	CY
3.85	137	CY
3.86	137	CY
3.87	137	CY
3.88	137	CY
3.89	137	CY
3.90	137	CY
3.91	137	CY
3.92	137	CY
3.93	137	CY
3.94	137	CY
3.95	137	CY
3.96	137	CY
3.97	137	CY
3.98	137	CY
3.99	137	CY
4.00	137	CY

**"BLUFFVIEW DRIVE"**  
 N. HARRY STREET TO N. WILMA STREET.  
 AT 0" ASPHALT CONCRETE & CURB/GUTTER  
 CITY OF WICHITA, KANSAS  
 B.E. SMITH CITY ENGINEER  
 DATE: SEPT. 1970 PROJECT NO. DAKS 54 9082

Plan Revised 3-14-72