

Revised April, 1949. Substituted 1948 traverse for original (1932) traverse. Bluff, Seneca & Douglas Ave.	RIVER	COUNTY	MILEAGE	SHEET	TOTAL
	Arkansas	Sedgwick	20 to 21	17	40

GENERAL NOTE:
 All traverse points above Douglas Ave. are 1948 traverse points. Points indicated thus ● are points on original (1932) traverse. Dotted line traverse indicates original traverse. All 1948 traverse points are marked by iron pins unless otherwise indicated.
 1948 traverse is balanced and adjusted with closure lines as shown. Azimuths and coordinates are from assumed data. Bank lines below Douglas Ave. are as traced from original tracing. Bank lines above Douglas Ave. are from topography, June, 1948.

RIGHT BANK

- Sta 1131+15.36
 N. 9,746.78 E. 7,611.55
 "X" on E. sidewalk S. end Seneca St. Bri.
 7.4' E. to handrail post.
 0.25' S. to end of bridge.
- Sta 1125+14.01
 N. 9,632.24 E. 8,201.90
 9.5' S. to edge of N. curb McLean Blvd.
 9.1' S. W. to Harding & McLean Blvd. Marker
 45.2' N. to St. light conc. post.
- Sta 1119+03.14
 N. 9,516.79 E. 8,140.55
 9.6' S. to base of light post.
 9.7' S. to U.S. Engrs. B.M. TSB-89-1947
- Sta 1112+58.24
 N. 9,234.24 E. 7,386.35
 U.S. Engrs. B.M. TSB-90-1947
- Sta 1106+08.39
 N. 8,968.02 E. 9,148.36
 "X" on N. curb of N. end 2nd St. Bri.
- Sta 1103+07.68
 N. 8,519.00 E. 9,449.01
 Concrete Monument, pipe in center
 193' N. to E. curb McLean Blvd.
- Sta 1098+99.9
 N. 8,119.77 E. 7,054.25
 10.3' S. to N. rail McLean R.R.
 14.0' SE. to N. A. cor. McLean Bri. Abut.
 11.6' S. W. to Western Union T.P.
 16.6' N. W. to base of "X" pole - 485-10
- Sta 1094+75.5
 N. 7,704.67 E. 10,144.87
 "X" on S. sidewalk of N. end Douglas Ave. Bri.
 2.5' S. to handrail about.
 3.7' W. to W. end of bridge.

TIES AND COORDINATES LEFT BANK

- Sta 1123+48.88
 N. 10,209.67 E. 7,810.18
 "X" on S. curb N. of bri. at Seneca
- Sta 1119+78.68
 N. 10,041.58 E. 7,939.79
 36.6' S. W. to red "X" on C.W.
 40.3' E. to steel ft. conc. post.
 City of Wichita Material Yard
- Sta 1115+67.36
 N. 9,942.40 E. 8,336.96
 1.9' N. to corner angle.
 16.6' E. to N. end of conc. spillway
- Sta 1113+19.21
 N. 9,912.28 E. 8,265.27
 53.3' W. to S. W. cor. of ft.
 6.7' S. to cor. of conc. wall.
 17.6' N. E. to S. E. cor. of conc. wall.
 14.8' W. to face of S. H.L.P.
 20.7' N. W. to " " " "
- Sta 1109+94.38
 N. 10,000.00 E. 8,896.03
 Pipe at center 3rd St. & Nims Ave.
 32.4' N. E. to St. Marker.
 45.0' S. E. to fire plug.
- Sta 1099+92.38
 N. 10,000.00 E. 10,000.00
 Thimble at Sherman & 5th St.
- Sta 1093+17.93
 N. 9,425.33 E. 9,996.98
 6" nail in expansion joint.
- Sta 1088+44.92
 N. 9,017.88 E. 10,236.91
 54' N. E. to S. W. cor. post. S.E.T. Co. Bldg.
 26.6' E. to N. cor. of diamond shaped brick building.

LEFT BANK

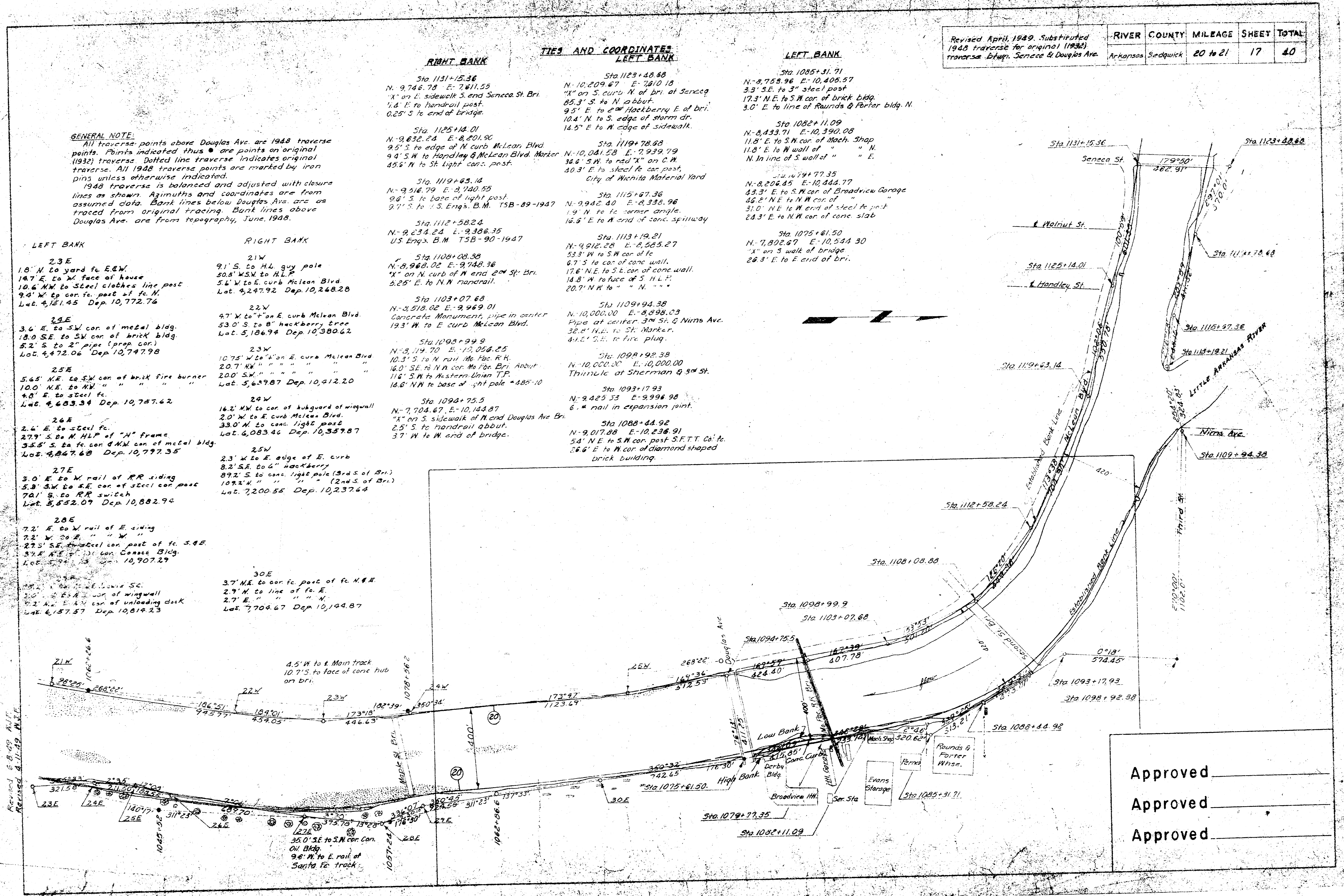
- Sta 1085+31.71
 N. 8,758.96 E. 10,405.57
 3.3' S. E. to 3" steel post
 17.3' N. E. to S. W. cor. of brick Bldg.
 3.0' E. to line of Rounds & Porter bldg. N.
- Sta 1082+11.09
 N. 8,433.71 E. 10,390.08
 11.8' E. to S. W. cor. of Mach. Shop
 11.8' E. to W. wall of " " " "
 N. in line of S. wall of " " " "
- Sta 1074+77.35
 N. 8,206.45 E. 10,444.77
 43.3' E. to S. W. cor. of Broadview Garage
 46.2' N. E. to W. cor. of " " " "
 31.0' N. E. to W. end of steel ft. post
 28.3' E. to N. W. cor. of conc. slab
- Sta 1075+61.50
 N. 7,802.67 E. 10,544.30
 "X" on S. walk of bridge
 26.3' E. to E. end of bri.

LEFT BANK

- 23E
 1.0' N. to yard ft. E.W.
 14.7' E. to W. face of house
 10.4' N. W. to Steel clothes line post
 9.4' W. to cor. of ft. post at ft. N.
 Lat. 4,151.45 Dep. 10,772.74
- 23E
 3.6' E. to S. W. cor. of metal bldg.
 18.0' S. E. to S. W. cor. of brick bldg
 5.2' S. to 2" pipe (prep cor.)
 Lat. 4,472.06 Dep. 10,747.98
- 25E
 5.65' W. E. to S. W. cor. of brick fire burner
 10.0' N. E. to NW " " " "
 4.0' E. to steel ft.
 Lat. 4,603.34 Dep. 10,787.42
- 26E
 2.6' E. to steel ft.
 27.7' S. to M. H.P. of "N" frame
 3.55' S. to ft. cor. of NW cor. of metal bldg.
 Lat. 4,847.68 Dep. 10,797.35
- 27E
 3.0' E. to W. rail of RR siding
 5.3' S. W. to S. E. cor. of steel cor. post
 7.0' S. to RR switch
 Lat. 5,552.07 Dep. 10,882.94
- 28E
 7.2' E. to W. rail of E. siding
 7.2' W. to E. " " " "
 27.5' S. E. to steel cor. post of ft. S. E.
 37.8' N. E. to S. W. cor. of Grass Bldg.
 Lat. 5,711.13 Dep. 10,907.27
- 29E
 1.5' S. to E. corner of SC
 1.5' S. to E. corner of wingwall
 2.1' N. E. to W. cor. of unloading dock
 Lat. 6,157.57 Dep. 10,819.23

RIGHT BANK

- 21W
 9.1' S. to H.L. guy pole
 50.2' W. S. V. to H.L.P.
 5.4' W. to E. curb McLean Blvd.
 Lat. 4,247.92 Dep. 10,248.28
- 22W
 4.7' W. to "X" on E. curb McLean Blvd.
 53.0' S. to 8" hackberry tree
 Lat. 5,186.74 Dep. 10,380.62
- 23W
 10.75' W. to "X" on E. curb McLean Blvd
 20.7' NW " " " " " "
 2.00' SW " " " " " "
 Lat. 5,639.87 Dep. 10,412.20
- 24W
 16.2' N. W. to cor. of bulgward of wingwall
 2.0' W. to E. curb McLean Blvd.
 33.0' W. to conc. light post
 Lat. 6,083.46 Dep. 10,357.87
- 25W
 2.3' W. to E. edge of E. curb
 8.2' S. E. to 6" hackberry
 89.2' S. to conc. light pole (9.4 S. of Bri.)
 107.2' W. " " " " (2.4 S. of Bri.)
 Lat. 7,200.56 Dep. 10,237.64
- 30E
 3.7' N. E. to cor. of post of ft. N. E. E.
 2.9' N. to line of ft. E.
 2.7' E. " " " " " "
 Lat. 7,704.67 Dep. 10,144.87



Approved _____
 Approved _____
 Approved _____

