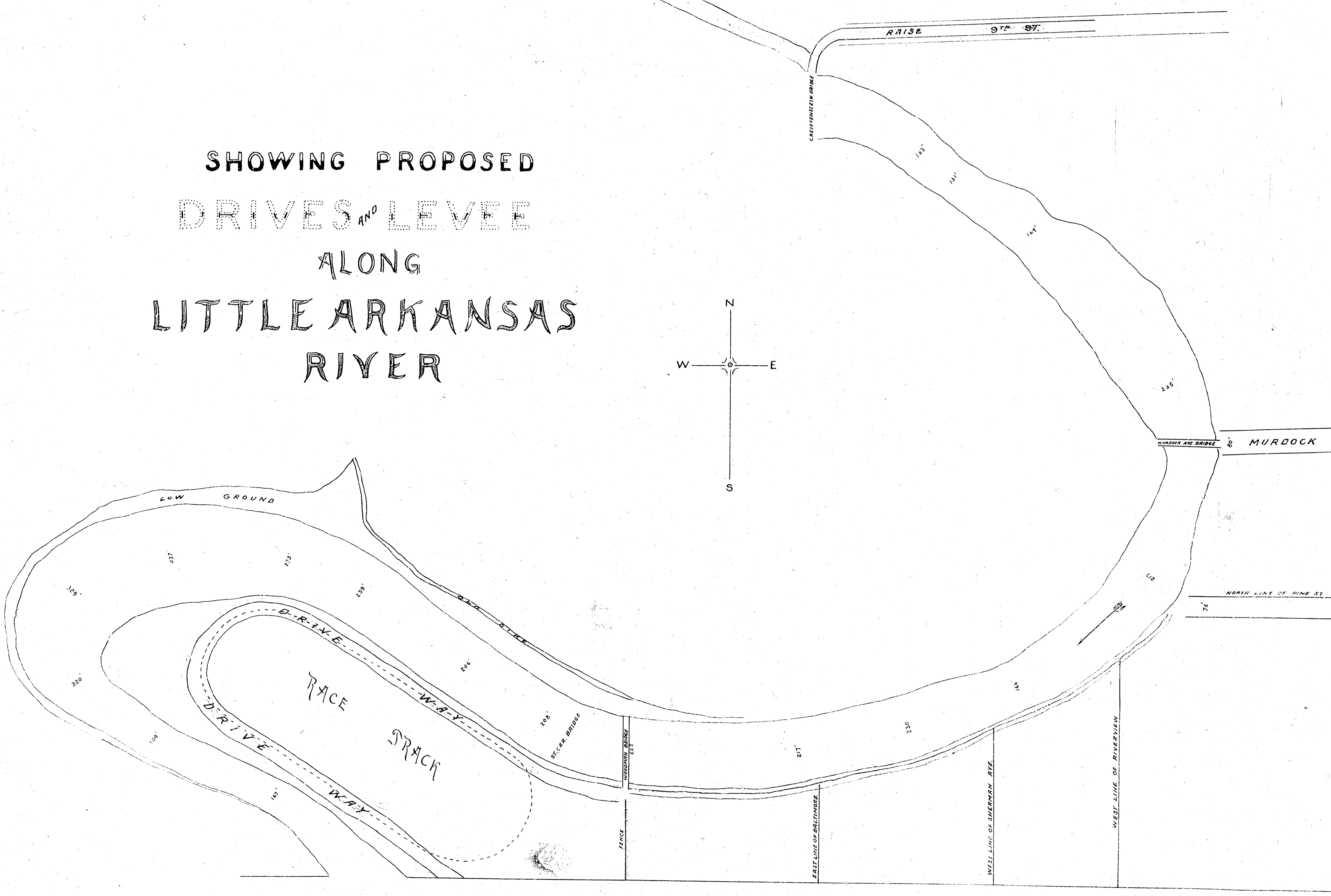
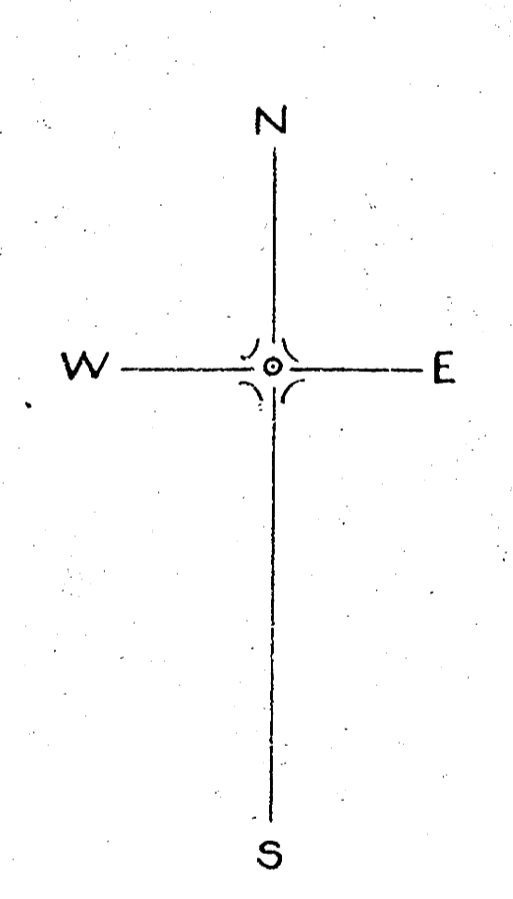
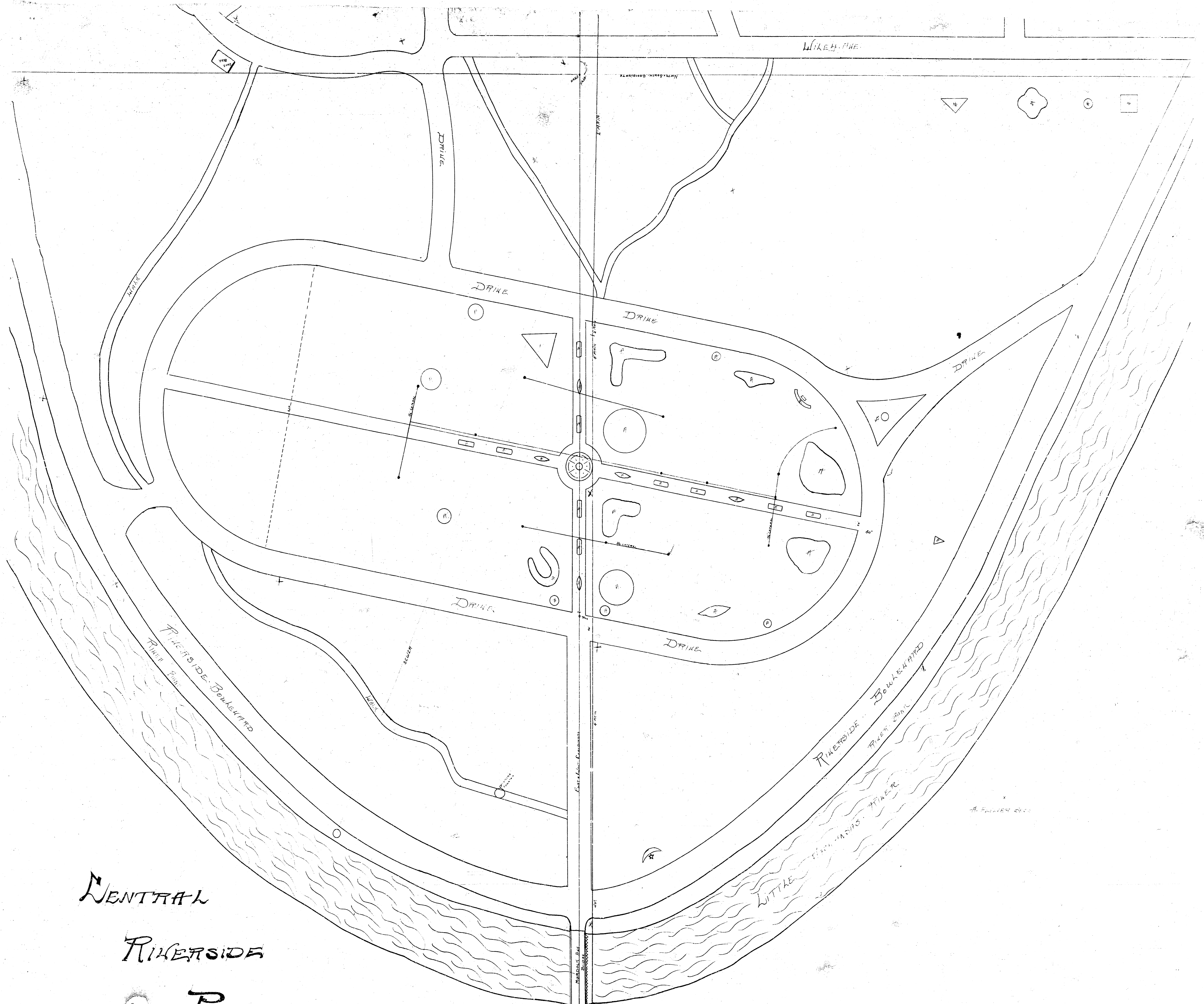


SHOWING PROPOSED  
 DRIVES AND LEVEE  
 ALONG  
 LITTLE ARKANSAS  
 RIVER



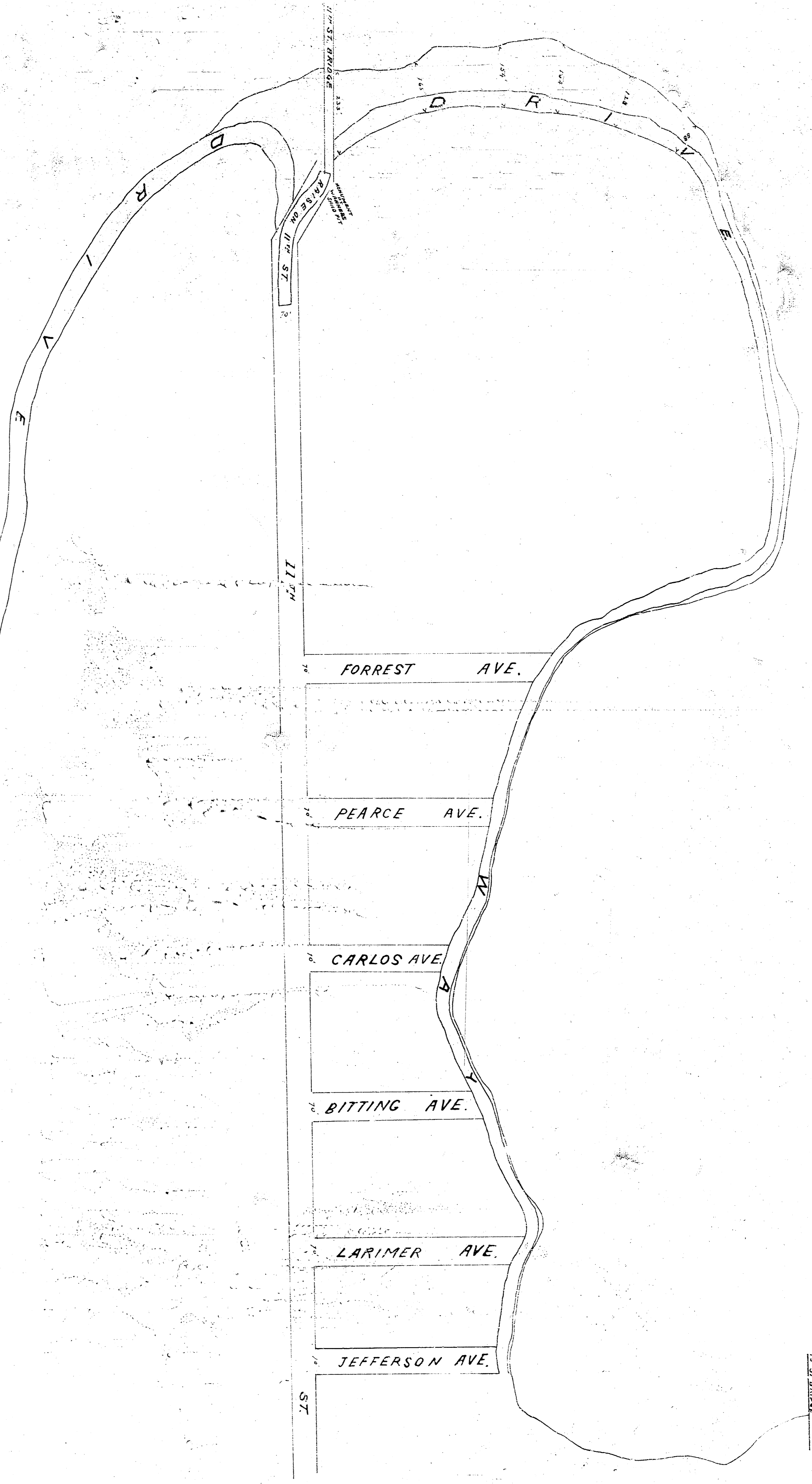
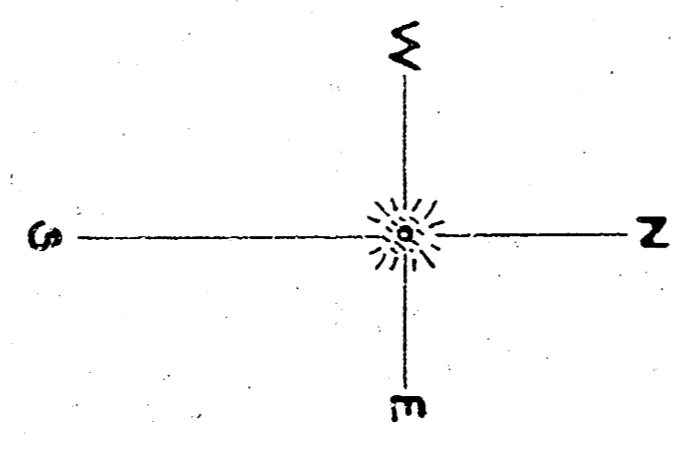
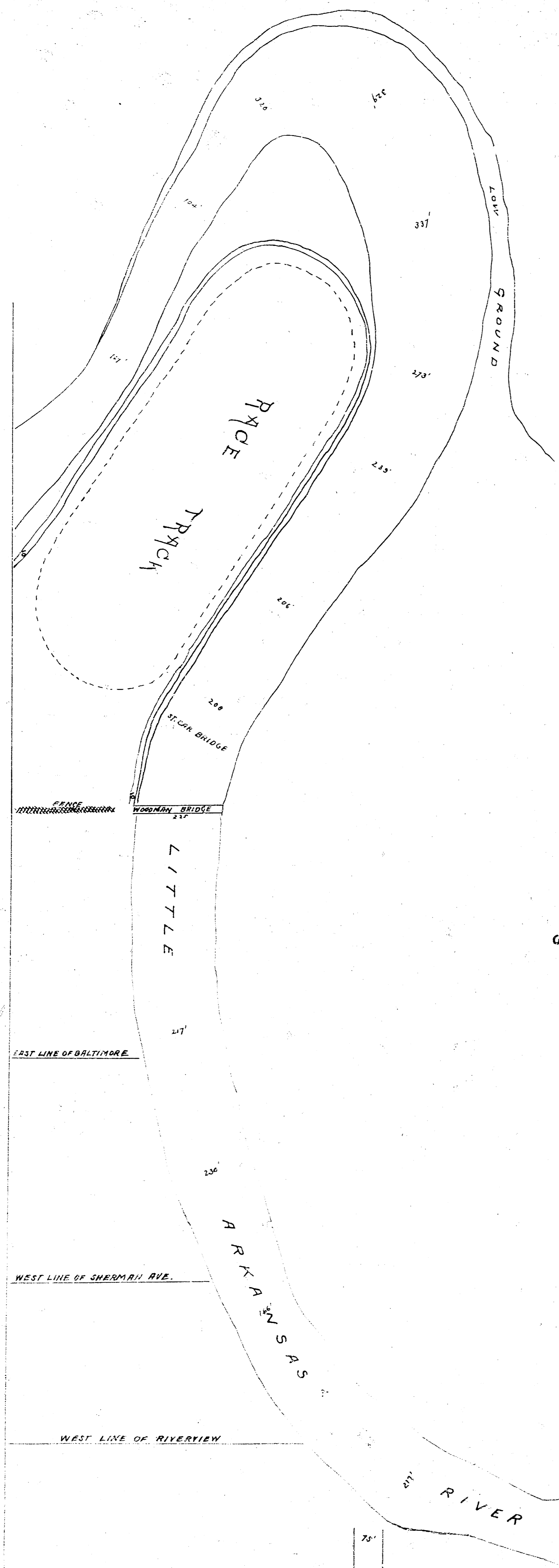


CENTRAL  
RIVERSIDE  
PARK

SCALE 1/4" = 10'



PROPOSED  
DRIVES  
ALONG  
LITTLE ARKANSAS  
RIVER



137th ST