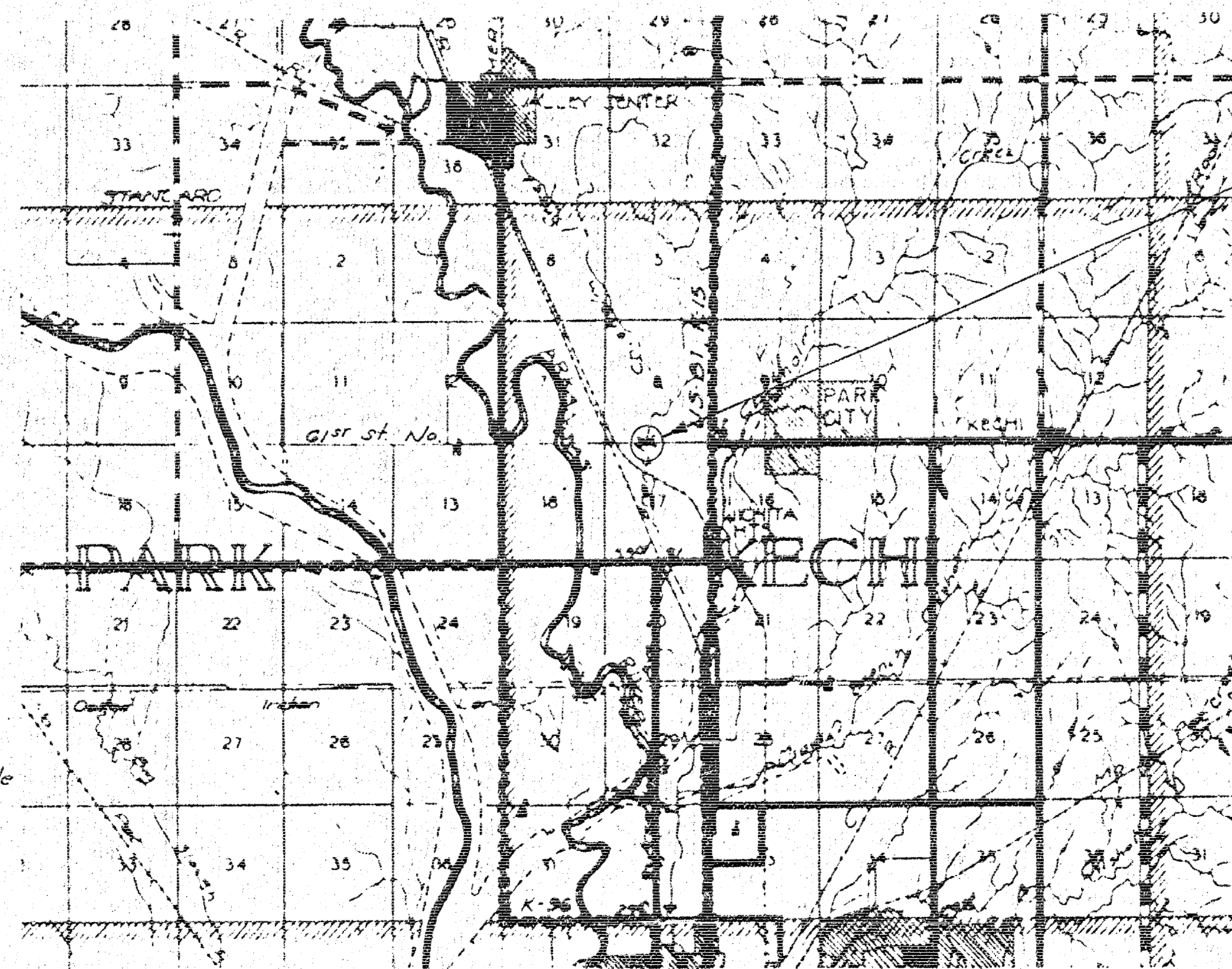


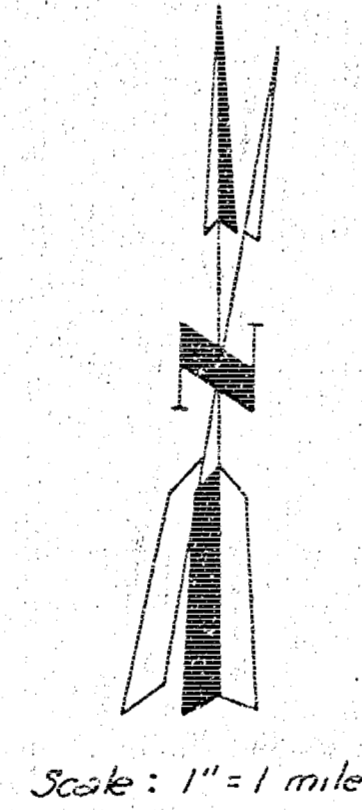
STATE	PROJECT NO.	FISCAL YEAR	SHEET NO.	TOTAL SHEETS
KANSAS				



INDEX OF SHEETS
 SHEET NO.1 TITLE SHEET
 SHEET NO.2 PLAN-PROFILE
 SHEET NO.3 CONSTRUCTION LAYOUT
 SHEET NO.4 REINFORCING DETAILS
 SHEET NO.5 AUXILIARY DETAILS
 SHEET NO.6 PILING DETAILS



Sta 17+83.12 (61' St. W. Br. Chisholm Cr.)
 Construct Mod. T-Beam Bridge
 5 Spans @ 36'-0"



Scale: 1" = 1 mile

CONVENTIONAL SIGNS

- COUNTY LINE
- SECTION LINE
- WIRE FENCE
- HEDGE ROW
- RAILROADS
- SURVEY LINE
- RIGHT OF WAY
- TELEPHONE POLE
- POWER POLE
- TRAVELED WAY

NET LENGTH OF PROJECT	5348.55	FT	1.013	MILES
NET LENGTH OF BRIDGES	182.0	FT	0.034	MILES
NET LENGTH OF ROAD	5166.55	FT	0.979	MILES
EXCEPTIONS	NONE	FT	NONE	MILES
ADDITIONS	NONE	FT	NONE	MILES
GROSS LENGTH OF PROJECT	5348.55	FT	1.013	MILES

PLANS PREPARED BY
 SEDGWICK COUNTY ENGR DEPT.

DATE

APPROVED DATE
[Signature]
 CHAIRMAN
 BOARD OF COUNTY COMMISSIONERS

APPROVED
[Signature]

COUNTY ENGINEER

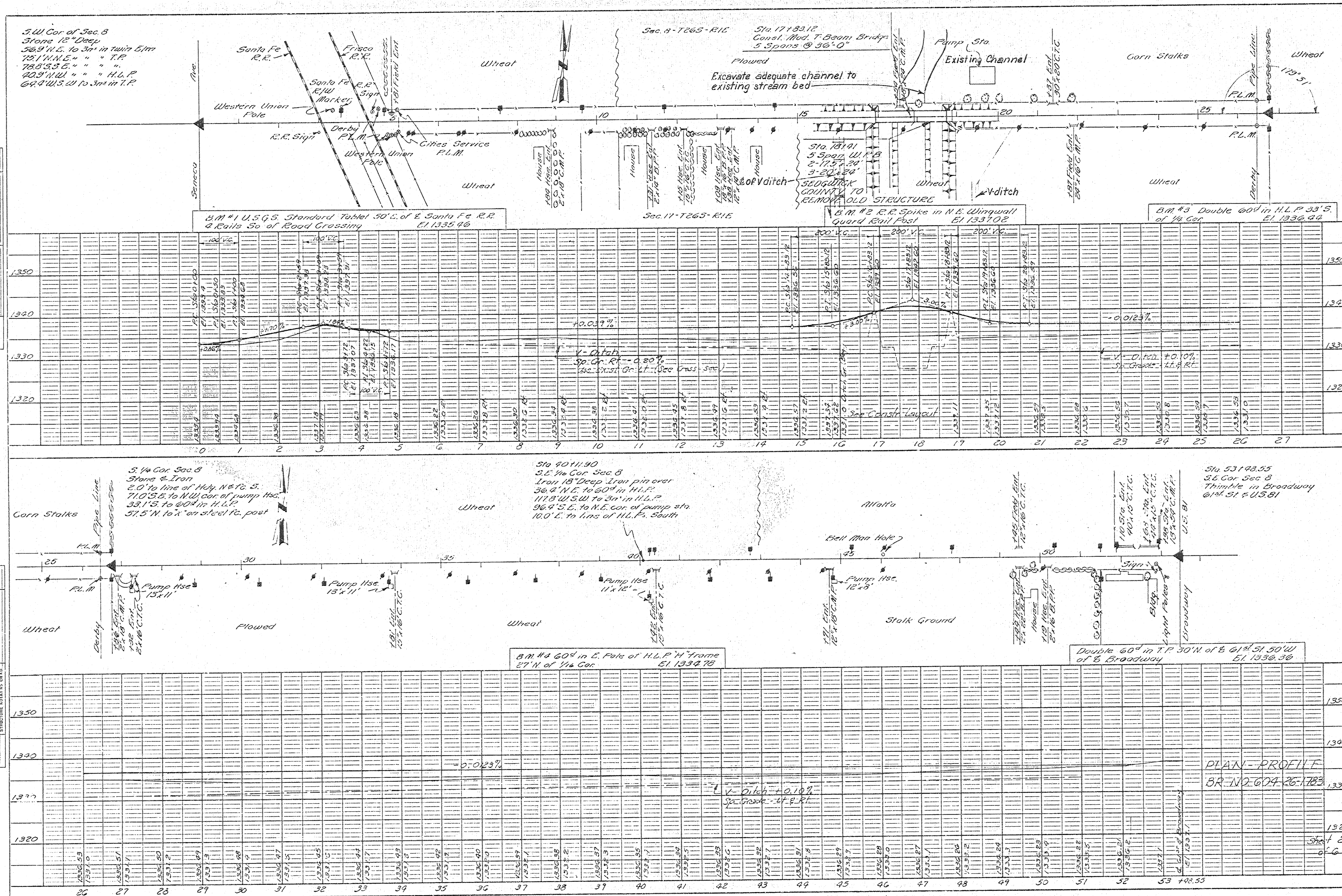
DATE

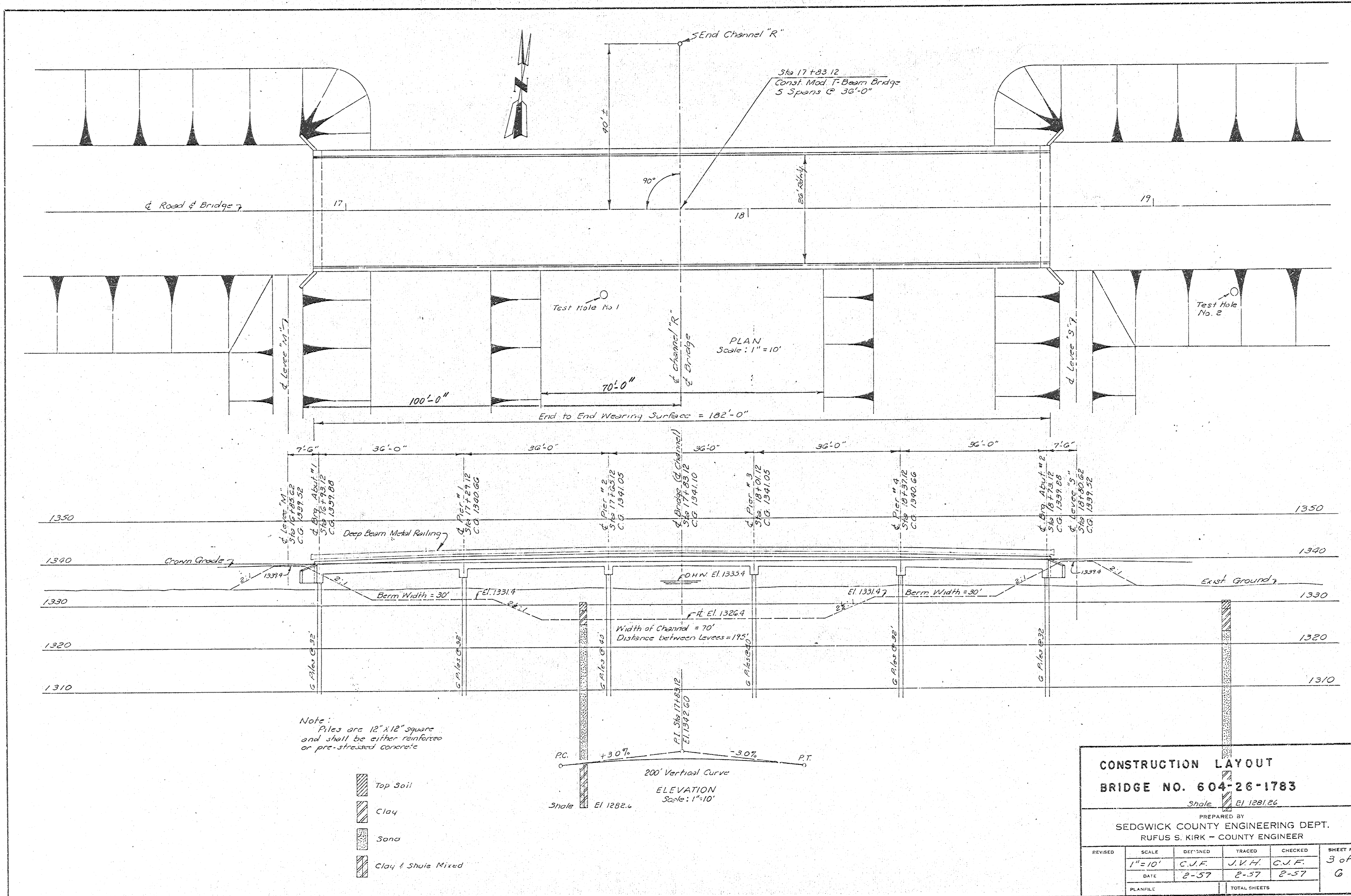
APPROVED DATE

Gist & W. Branch

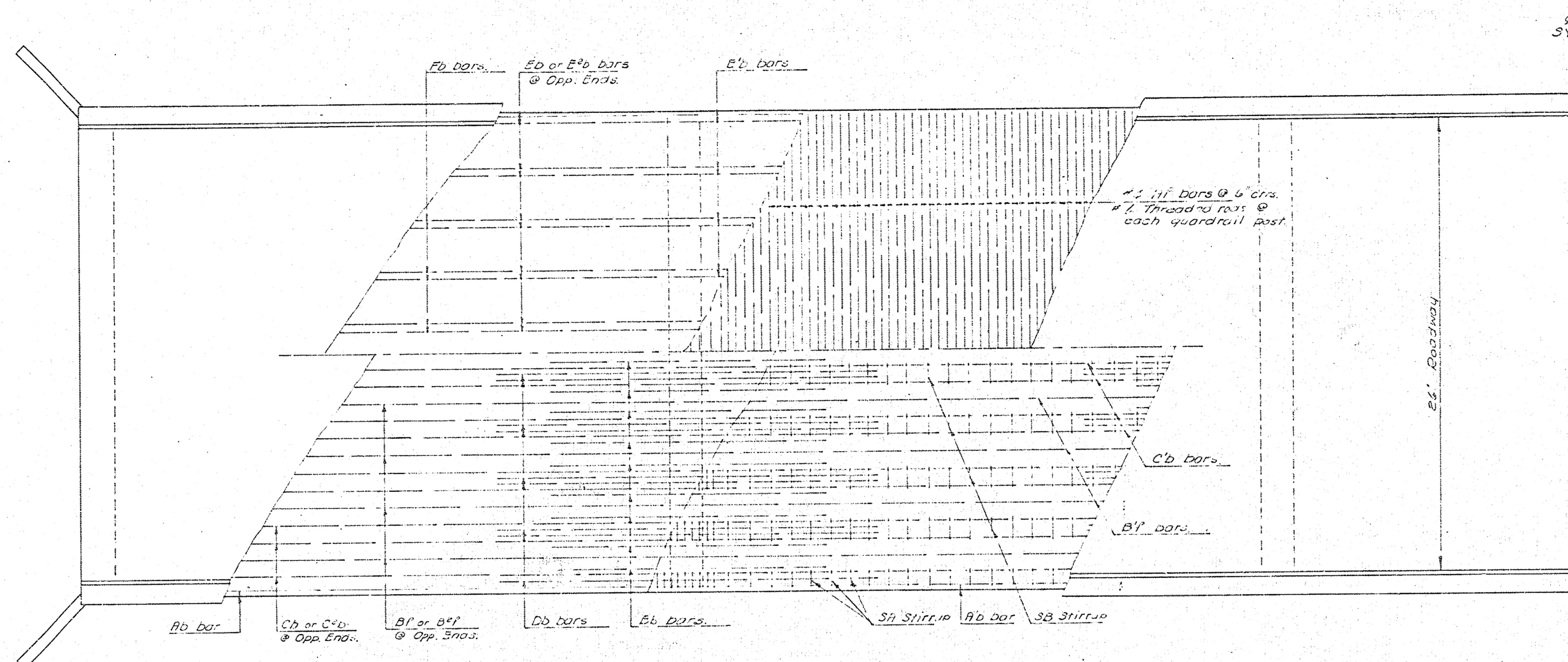
PLAN
 SURVEYED BY: J. H. ...
 DATE: ...

PROFILE
 SURVEYED BY: J. H. ...
 DATE: ...

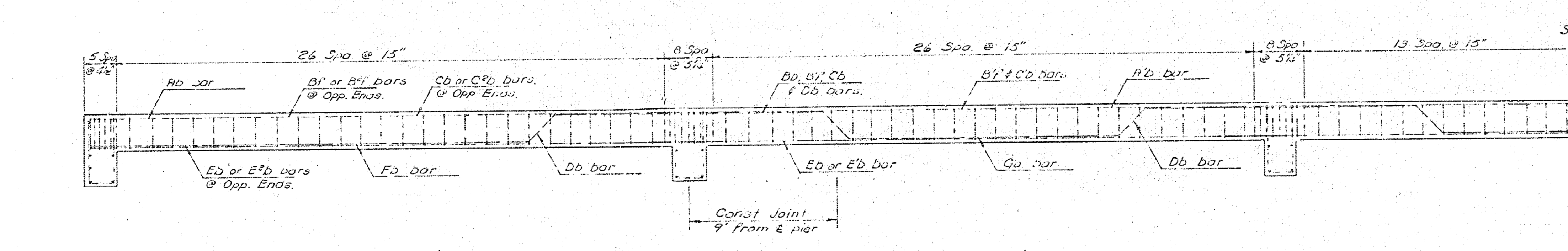
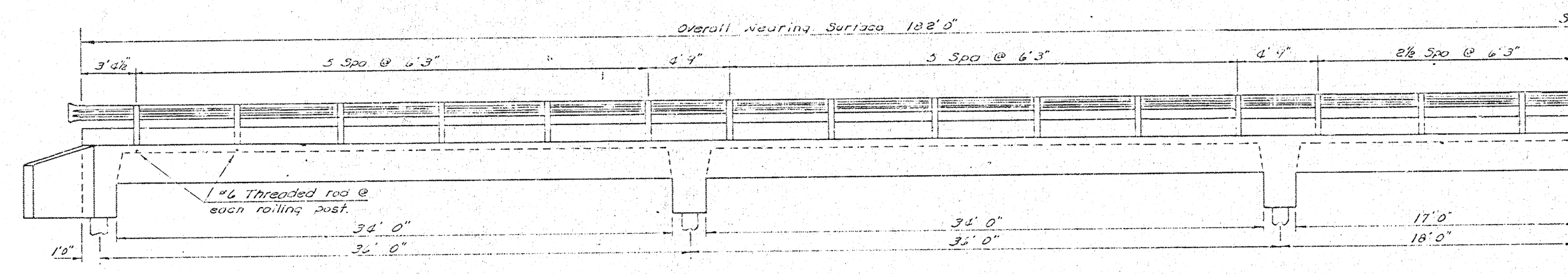




CONSTRUCTION LAYOUT					
BRIDGE NO. 604-26-1783					
Shale El 1281.26					
PREPARED BY SEDGWICK COUNTY ENGINEERING DEPT. RUFUS S. KIRK - COUNTY ENGINEER					
REVISED	SCALE	DESIGNED	TRACED	CHECKED	SHEET NO
	1" = 10'	C.J.F.	J.V.H.	C.J.F.	3 of 6
		DATE 8-37	8-37	8-37	G
	PLANFILE	TOTAL SHEETS			



PLAN VIEW



GENERAL NOTES

DESIGN - Designed for H-20-44 loading AASHTO Specifications. $f'_c = 20,000$ psi; $f_y = 1,200$ psi.

SOUNDING - To be taken by Sedg. Co. Engr. Dept.

PILING - Concrete precast or prestressed piling to be driven to a calculated resistance of 2.5 ton.

OLD STRUCT. - To be removed by Sedg. Co.

CONCRETE - Class A (BE) concrete used throughout. Bevel all exposed edges with a $3/4"$ Δ making unless otherwise noted. Forms shall be preformed steel pans used as directed by the Engr. in charge.

GUARDRAILING - To be standard Deep Beam guardrail as shown on const. layout.

PAINT - All parts of the Metal handrail shall receive one shop coat of red lead paint. All exposed surfaces of structural steel and metal handrail shall receive one coat of zinc aluminum paint followed by one coat of aluminum paint after erection.

**RE CONC. MODIFIED T-BEAM BRIDGE
REINFORCING DETAIL
BRIDGE NO. 604-26-1783**

PREPARED BY
SEDWICK COUNTY ENGINEERING DEPT.
RUFUS S. KIRK - COUNTY ENGINEER

REVISED	SCALE	DESIGNED	TRACED	CHECKED	SHEET NO.
	1/4" = 1'	M.D.	M.D.	C.J.F.	4 of 6
		1-37	Jan. 37	E-57	
	PLANFILE	TOTAL SHEETS			

