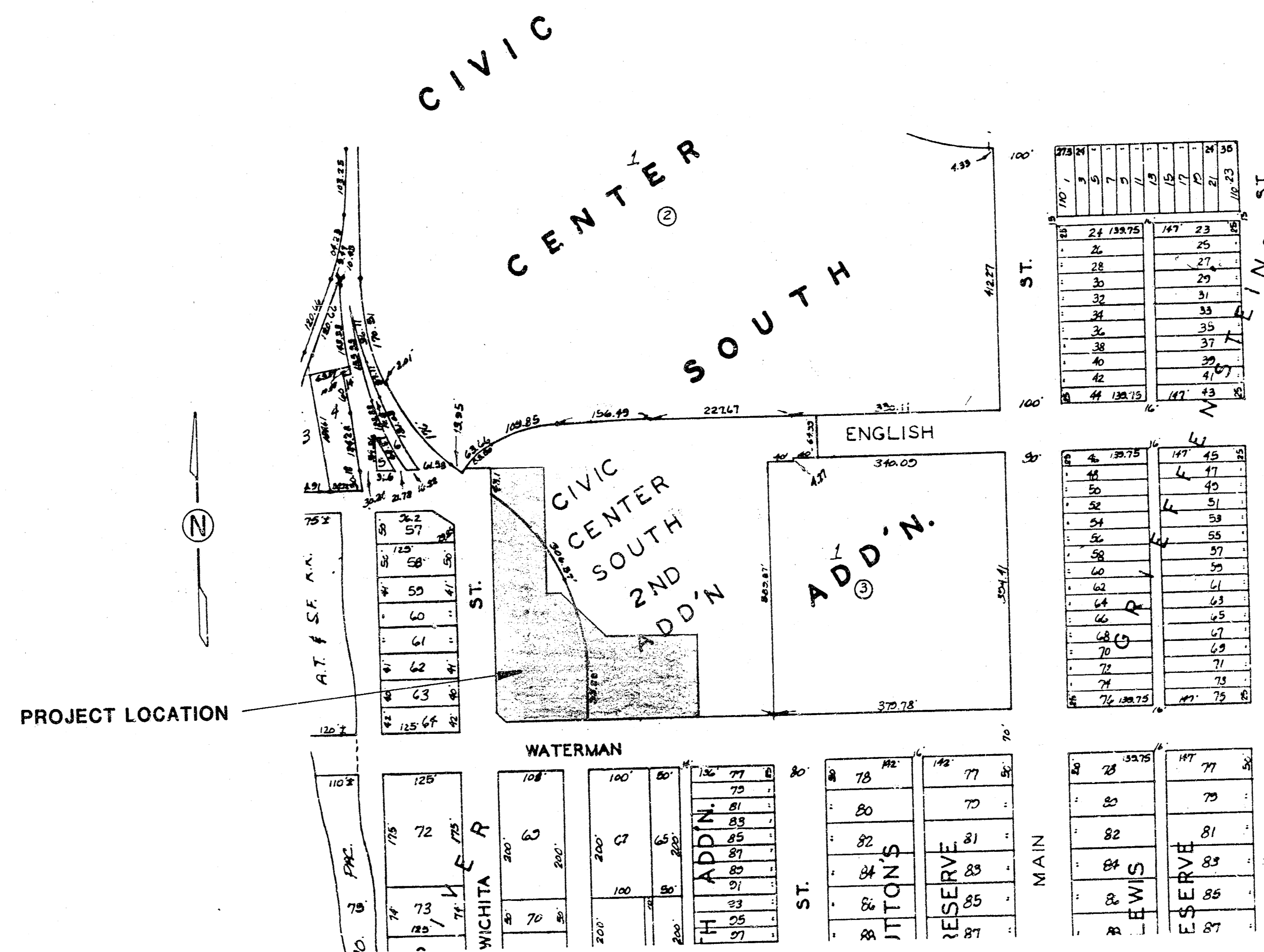


PARKING LOT IMPROVEMENTS FOR

CENTURY II EXHIBITION CENTER

PROJECT NUMBER
472-76-245-81501-000-000-001

- INDEX
1. Title and Location Map
 2. Parking Lot Details
 3. Parking Lot Plan
 4. Incidental Drainage
 5. Type 1A Inlet Details
 6. Drop Inlet Details
 7. Parking Lot Lighting
 - 8-9. Earthwork Cross Sections



NOTE: CONTRACTOR WILL BE REQUIRED TO OBTAIN A PERMIT FROM CENTRAL INSPECTION DIVISION, DEPARTMENT OF HOUSING AND ECONOMIC DEVELOPMENT, PRIOR TO STARTING WORK ON PARKING LOT. CONTRACTOR WILL BE REQUIRED TO PAY THE NORMAL FEE CHARGED FOR SUCH PERMITS.

NOTE:
Site to be cleared of trailers, construction equipment, and materials by "others" prior to issuance of notice to proceed.

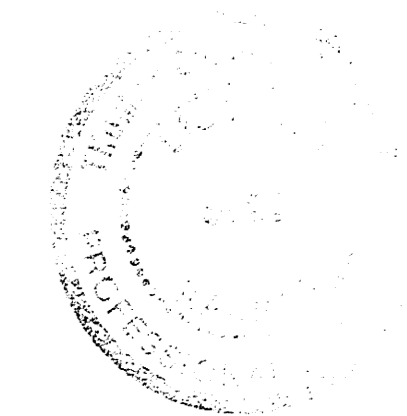
CITY OF WICHITA, KANSAS
MIKE E. LINDEBAK — CITY ENGINEER

BENCH MARKS

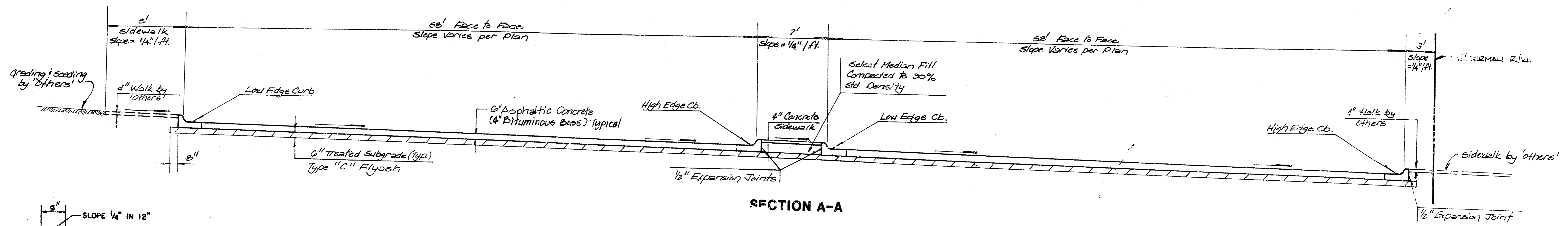
- B.M. 3/4" Iron pipe in thimble at West Side Water Street on Center-line Waterman. Elev. = 110.34
- B.M. Headbolt between "Mueller" and "Chattanooga" on fire hydrant at Northwest Corner Wichita and Waterman. Elev. = 111.56

SEPTEMBER 1985

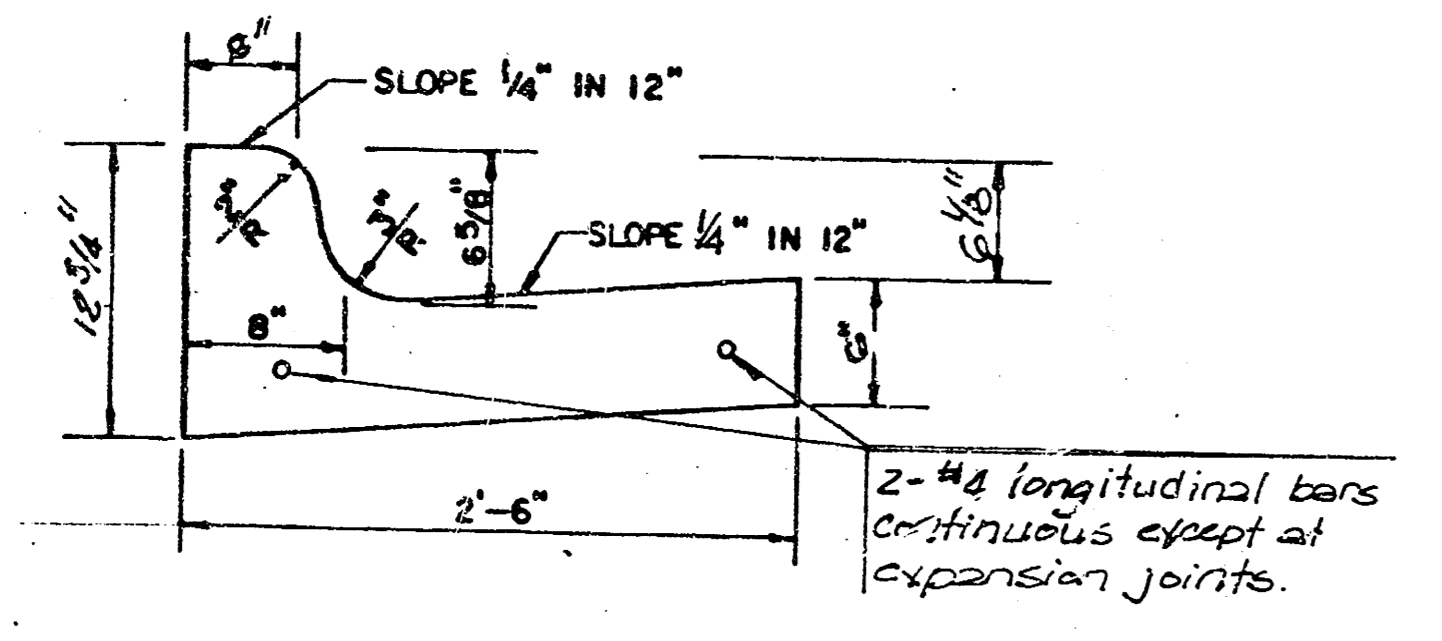
BAUGHMAN COMPANY, P.A.
SURVEYING & ENGINEERING
316/262-7271 • 330 LAURA • WICHITA, KANSAS 67211



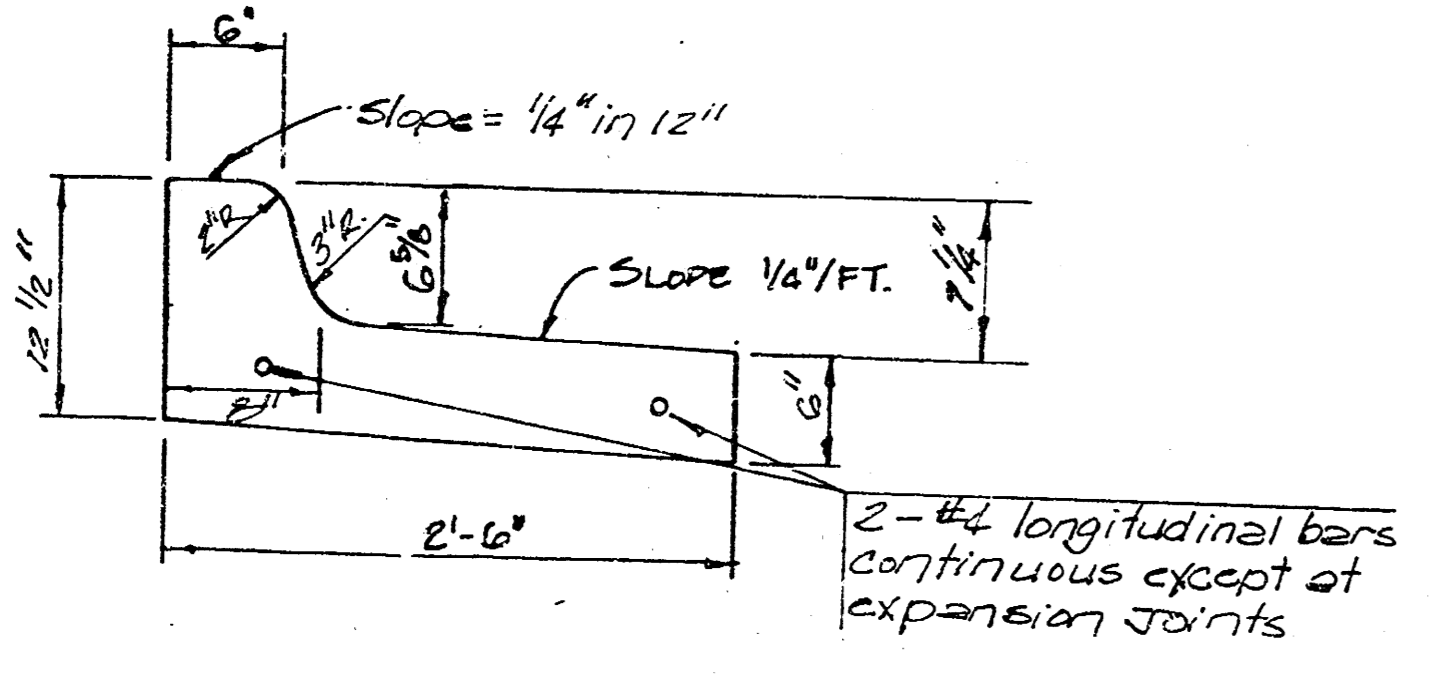
1/4



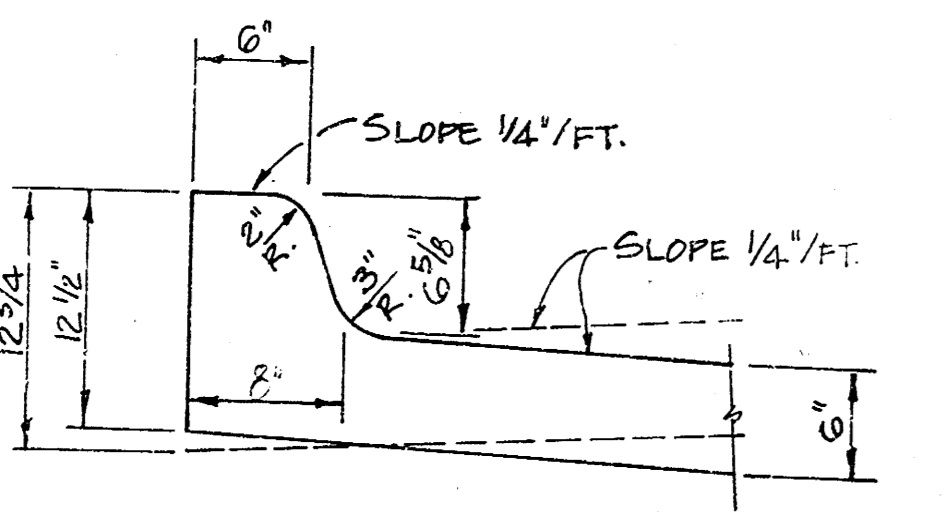
SECTION A-A



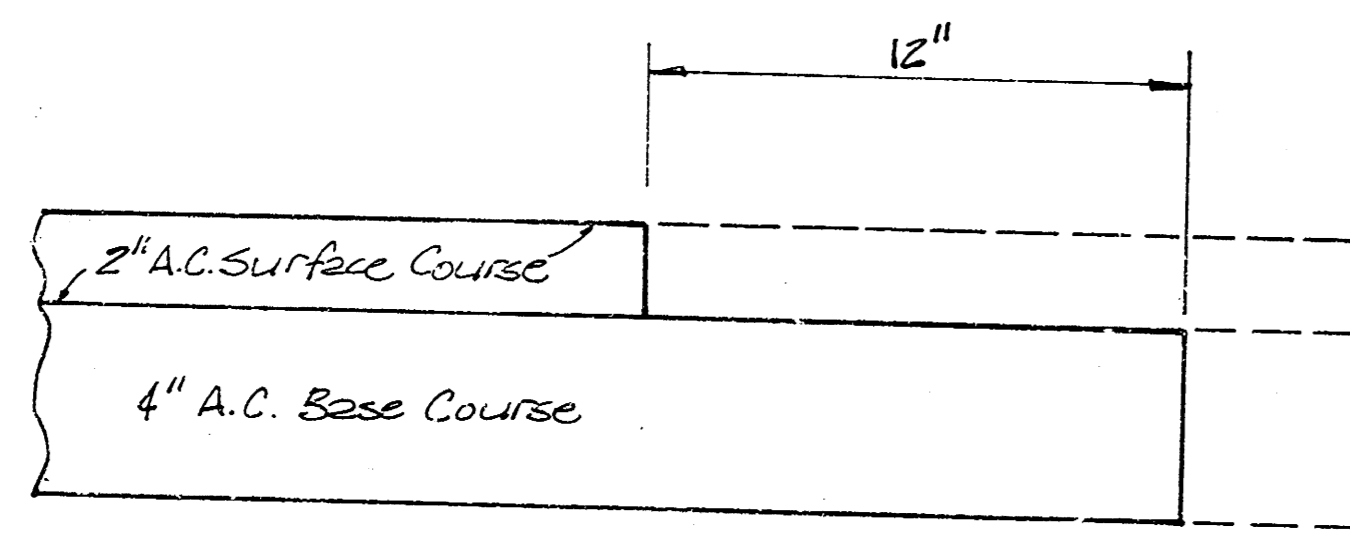
HIGH-EDGE CURB DETAIL



LOW-EDGE CURB DETAIL

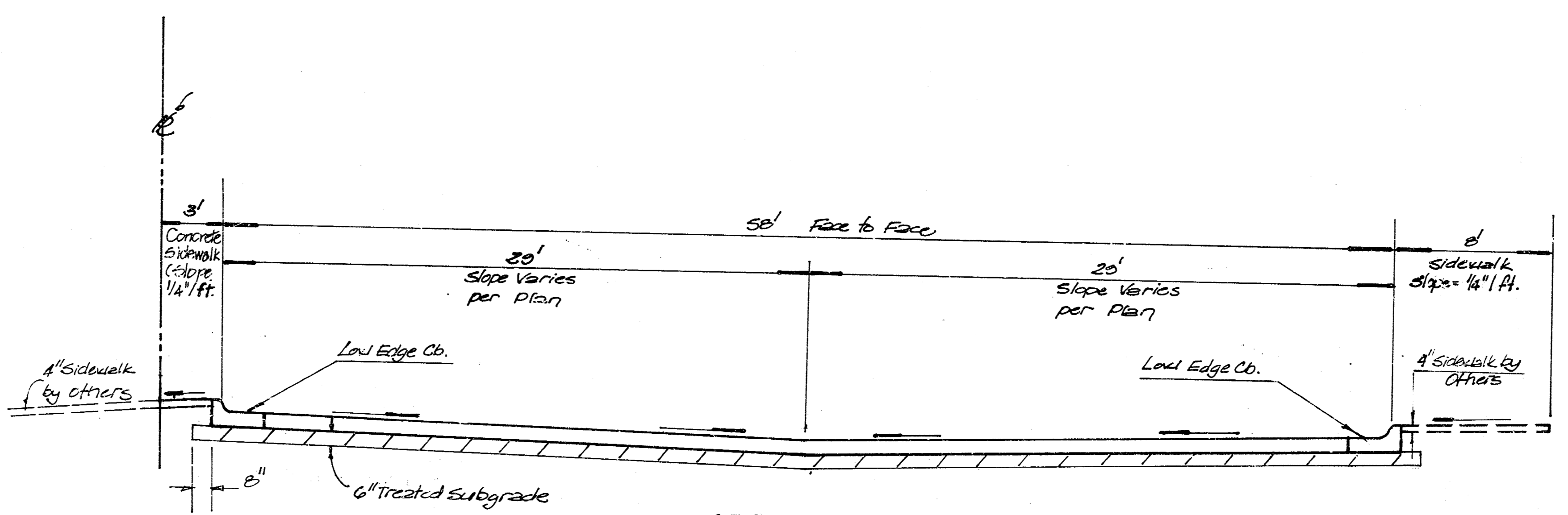


MONOLITHIC CURB DETAIL

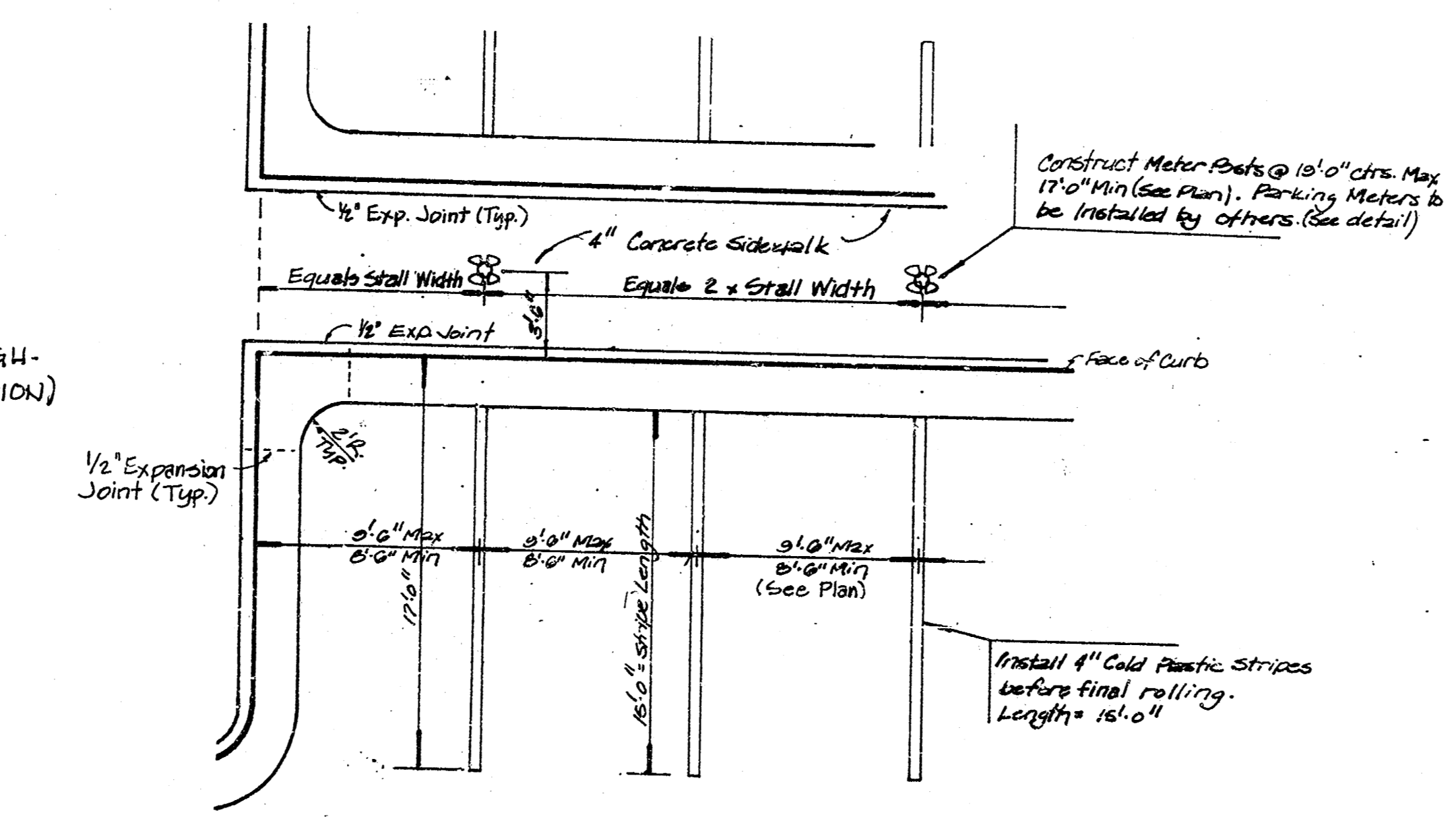


TRANSVERSE CONSTRUCTION JOINTS

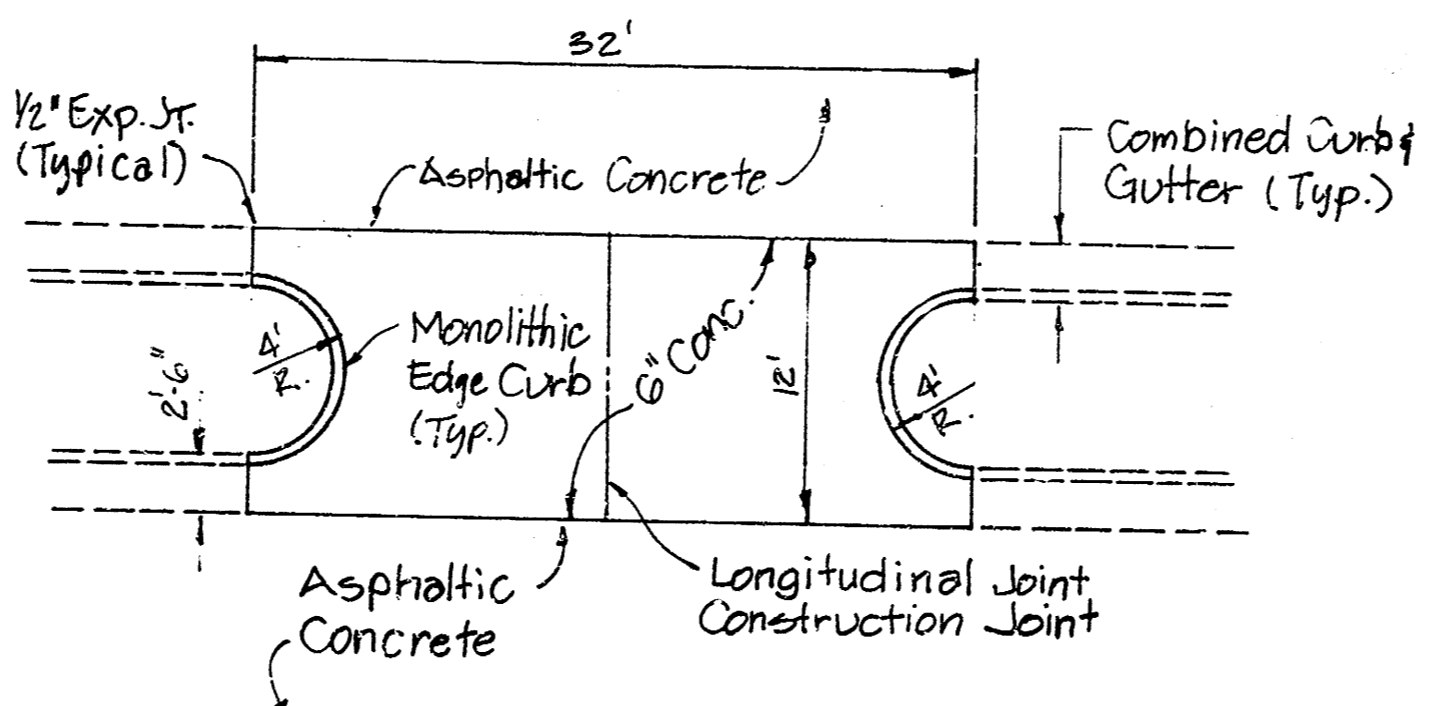
Note: A tack coat of emulsified asphalt (EC-1H or C96-1H) shall be applied at an approximate rate of 0.05 gallons per square yard between each lift of asphaltic material. Joints in asphaltic lifts shall be staggered a distance of 1'-0" from joints in preceding lifts.



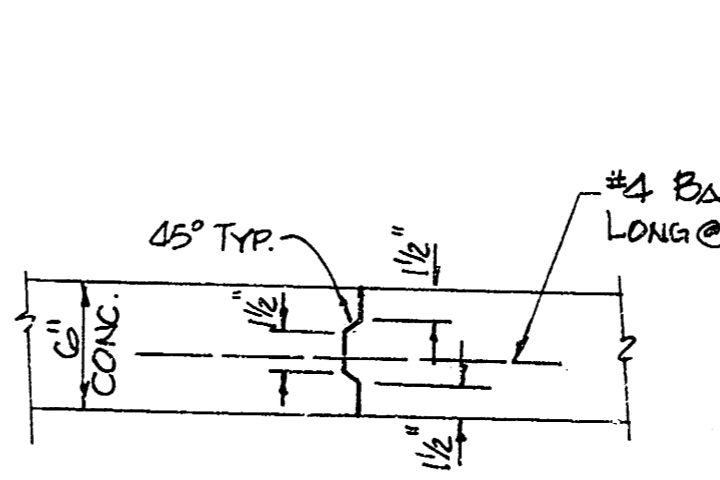
SECTION B-B



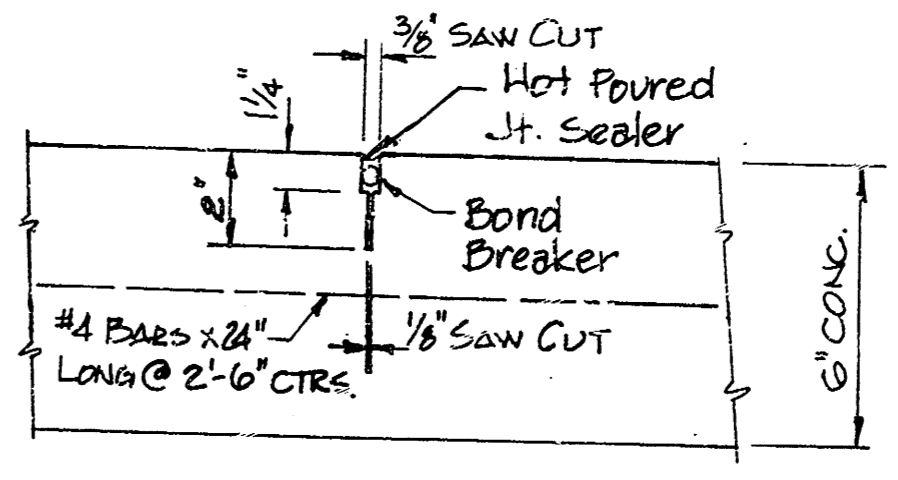
STRIPING AND PARKING METER DETAIL



VALLEY GUTTER DETAIL

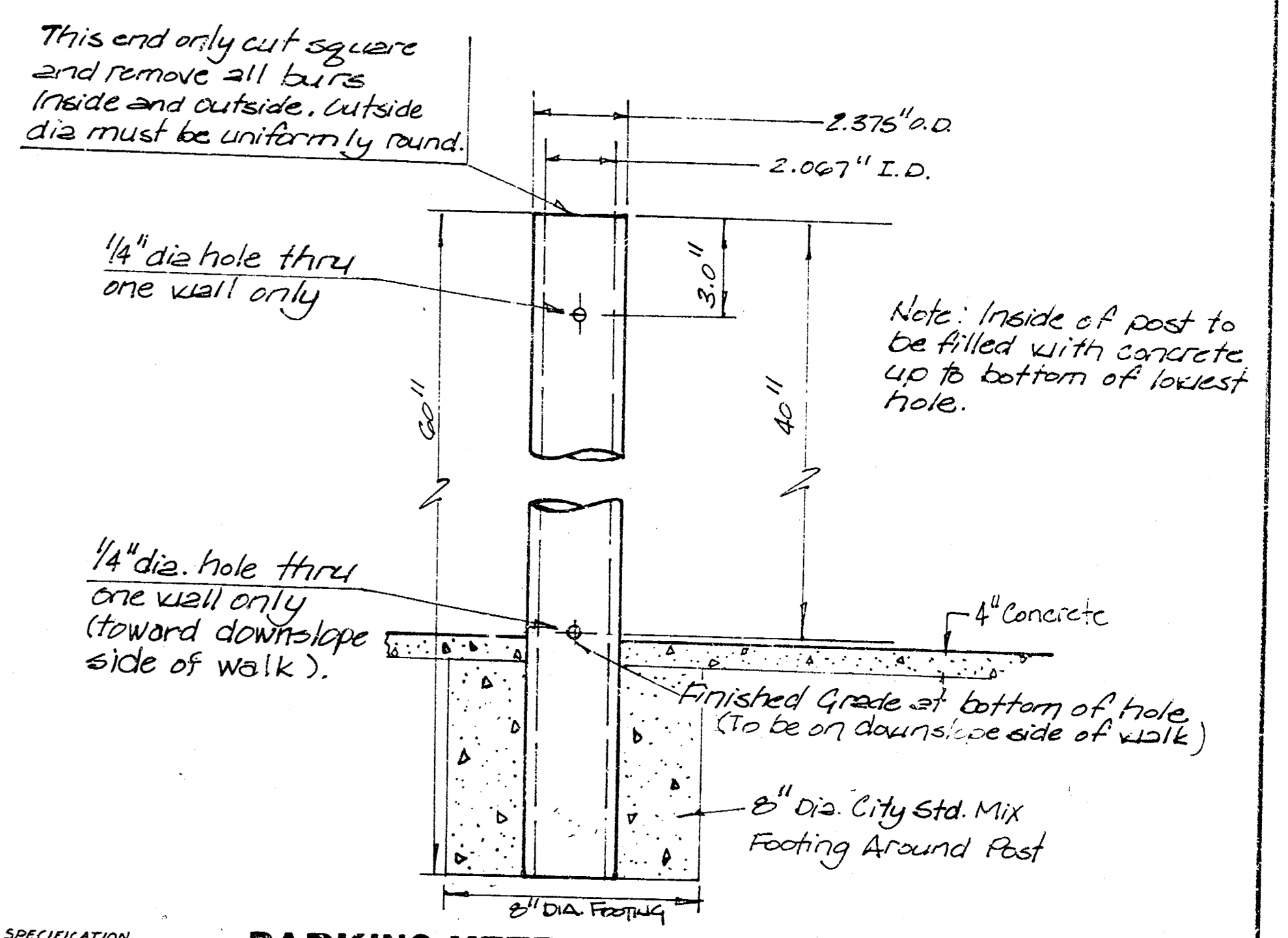
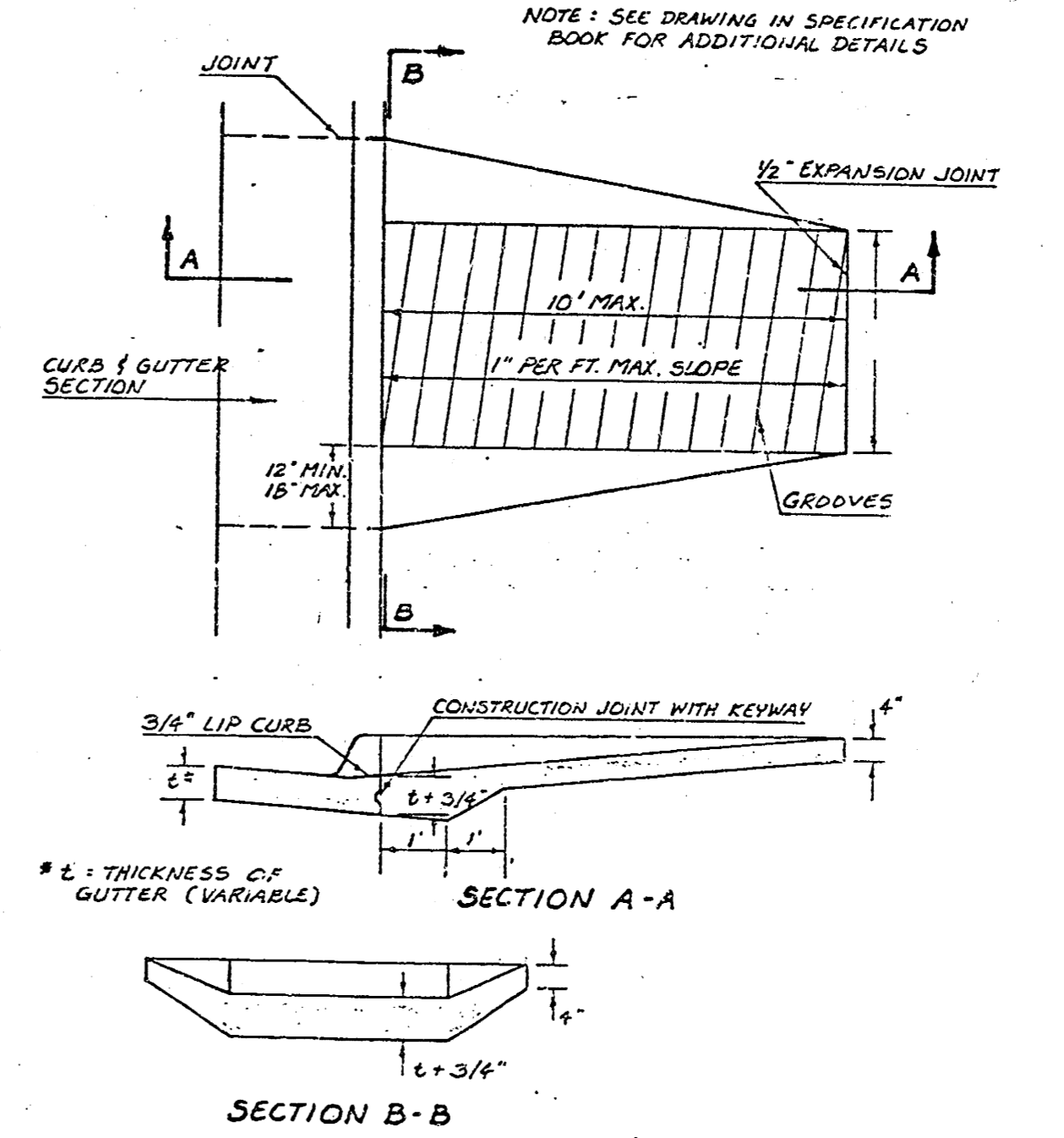


LONGITUDINAL CONSTRUCTION JOINT

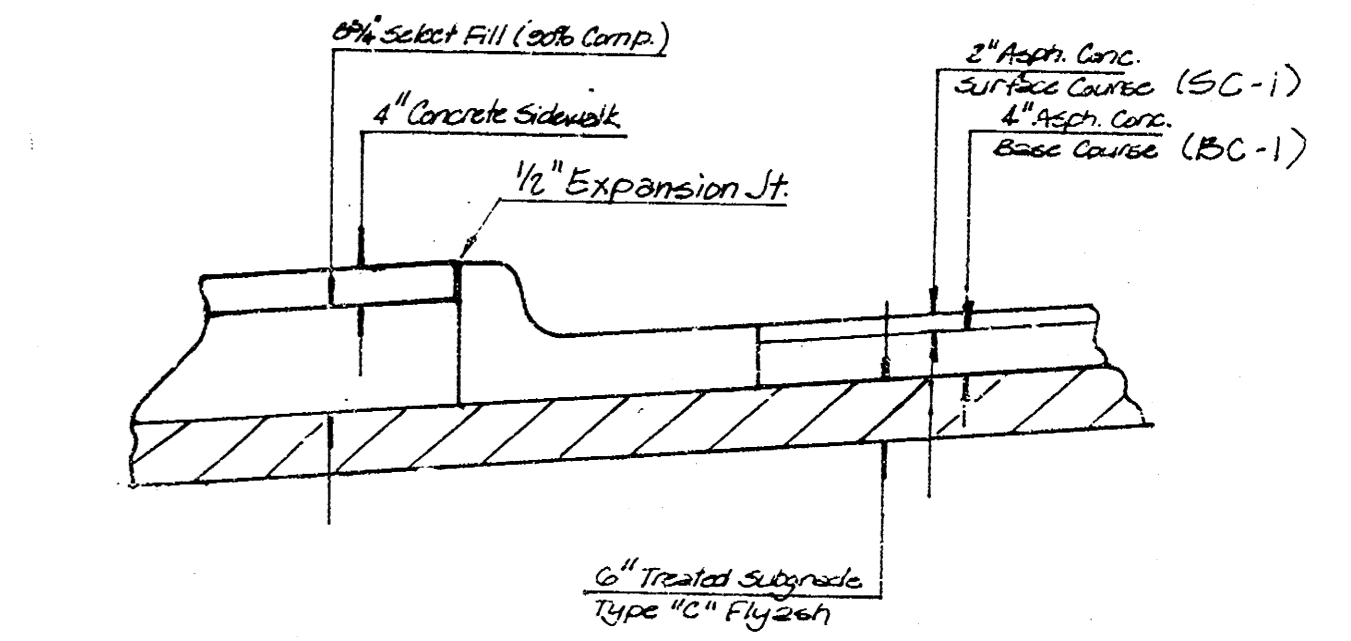


LONGITUDINAL SAWED JOINT

WHEELCHAIR RAMP DETAIL



PARKING METER POST DETAIL

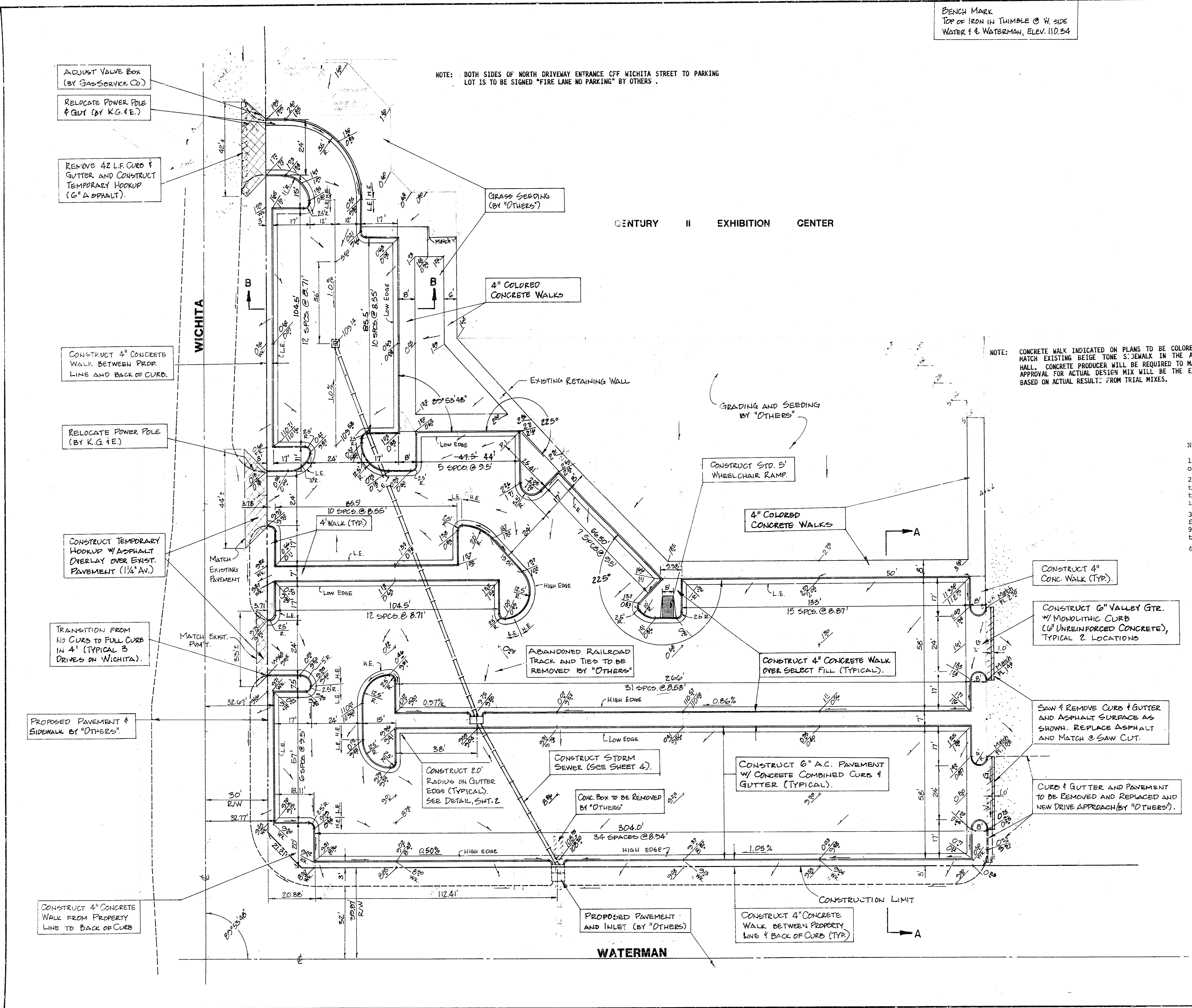


PAVEMENT AND SUBGRADE DETAIL AT CURB AND WALK

PARKING LOT DETAILS
 CENTURY II EXHIBITION CENTER
 CITY OF WICHITA, KS
 472-76-245-81501-000-000-001
BAUGHMAN COMPANY, P.A.
 SURVEYING & ENGINEERING
 316262-7271 • 330 LAURA • WICHITA, KANSAS 67211

BENCH MARK
TOP OF IRON IN THIMBLE @ W. SIDE
WATER & WATERMAN, ELEV. 110.54

NOTE: BOTH SIDES OF NORTH DRIVEWAY ENTRANCE OFF WICHITA STREET TO PARKING LOT IS TO BE SIGNED "FIRE LANE NO PARKING" BY OTHERS.



NOTE: CONCRETE WALK INDICATED ON PLANS TO BE COLORED SHALL BE COLORED TO MATCH EXISTING BEIGE TONE SIDEWALK IN THE AREA OF THE EXHIBITION HALL. CONCRETE PRODUCER WILL BE REQUIRED TO MAKE TRIAL MIXES. FINAL APPROVAL FOR ACTUAL DESIGN MIX WILL BE THE ENGINEER'S DETERMINATION BASED ON ACTUAL RESULT FROM TRIAL MIXES.

NOTES:

1. All dimensions to curbs are to face of curb unless otherwise noted.
2. Transition from high-edge to low-edge curb and gutter section to be constructed in 4' (typical). Transition section shall be located downslope from the point indicated on plan.
3. Area of railroad track removed is to be left unfilled by "others". Fill and compact elevated area to 90% std. density up to bottom of treated subgrade prior to subgrade manipulation.
4. Total number of parking spaces = 173.

EARTHWORK QUANTITIES		Compacted Fill (90% Std. Density)	
Excavation	2075 C.Y.		124 C.Y.
+10%	208	+10%	12
	2283 C.Y.		136 C.Y.
Subgrade Stabilization		Compacted Fill (95% Std. Density)	
Manipulation	5948 S.Y.		78 C.Y.
		+10%	8
			86 C.Y.

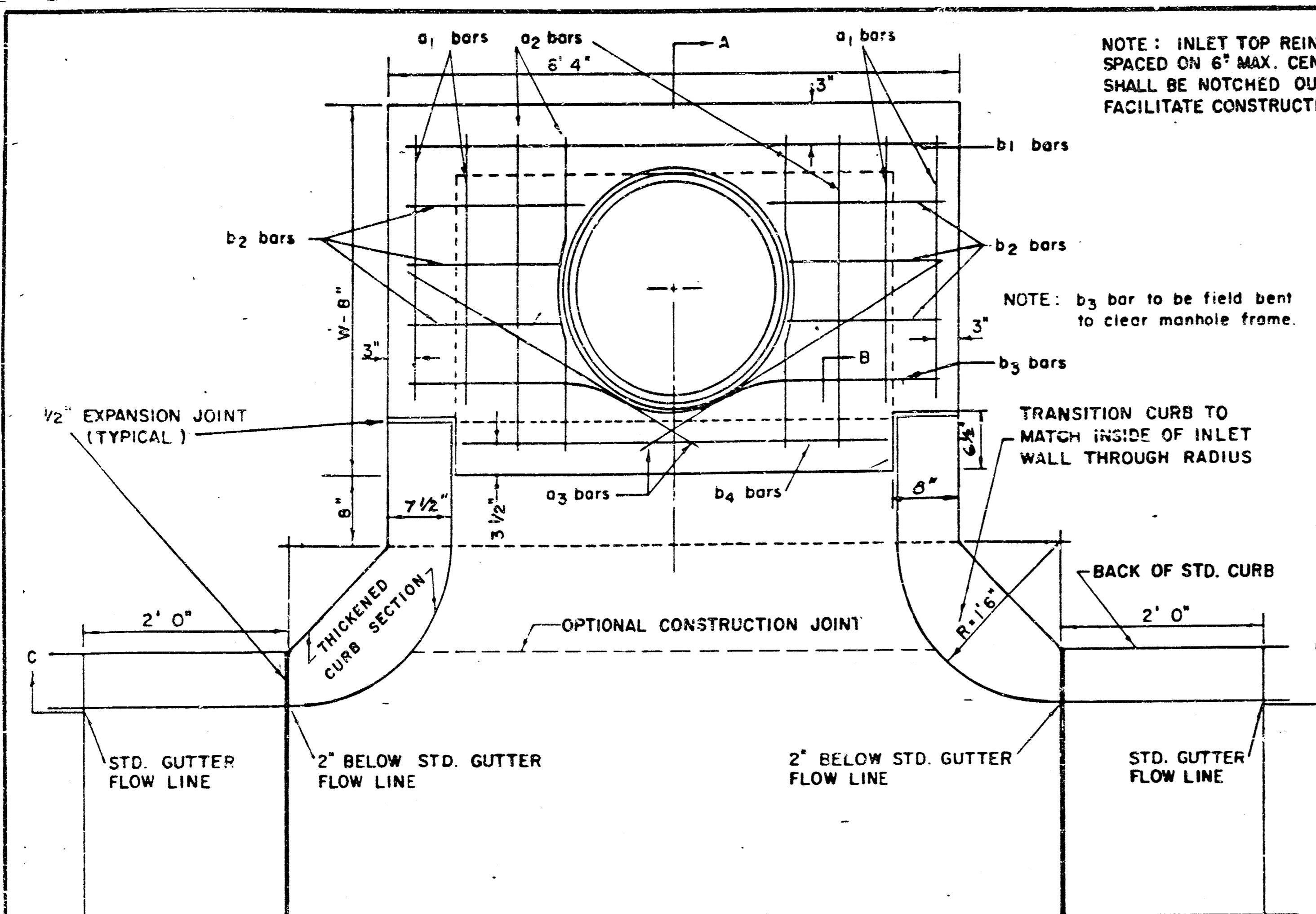
LEGEND

- PAVEMENT TO BE REMOVED
- TEMPORARY ASPHALT HOOKUP
- COLORED CONCRETE WALK
- H.E. HIGH-EDGE GUTTER SECTION (GUTTER SLOPES TOWARD CURB)
- L.E. LOW-EDGE GUTTER SECTION (GUTTER SLOPES AWAY FROM CURB)

PARKING LOT PLAN
PARKING LOT IMPROVEMENTS
CENTURY II EXHIBITION CENTER
CITY OF WICHITA, KANSAS
PROJECT NUMBER
472-76-245-81501-000-000-001

BAUGHMAN COMPANY, P.A.
SURVEYING & ENGINEERING
316/262-7271 • 330 LAURA • WICHITA, KANSAS 67211

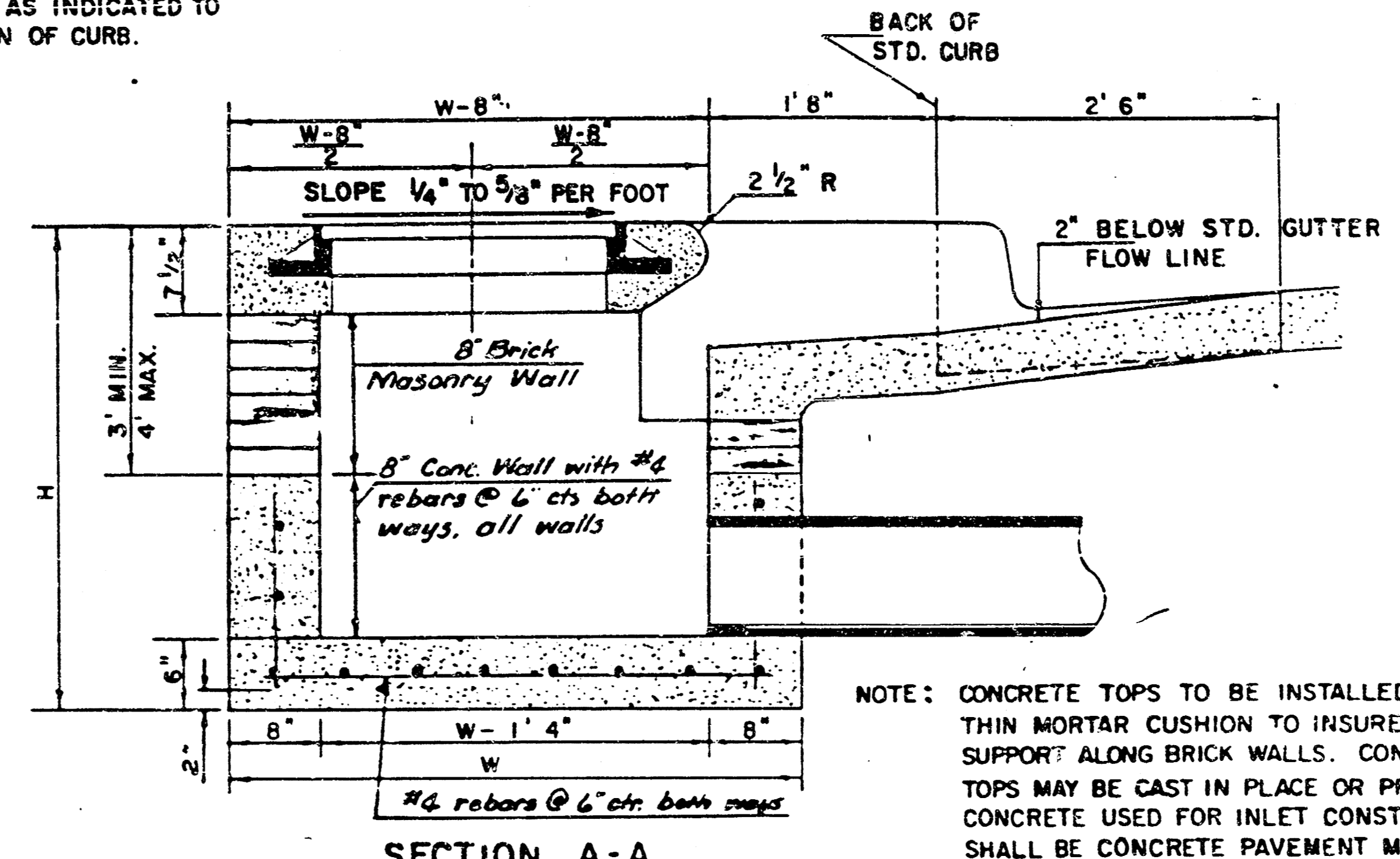
3/9



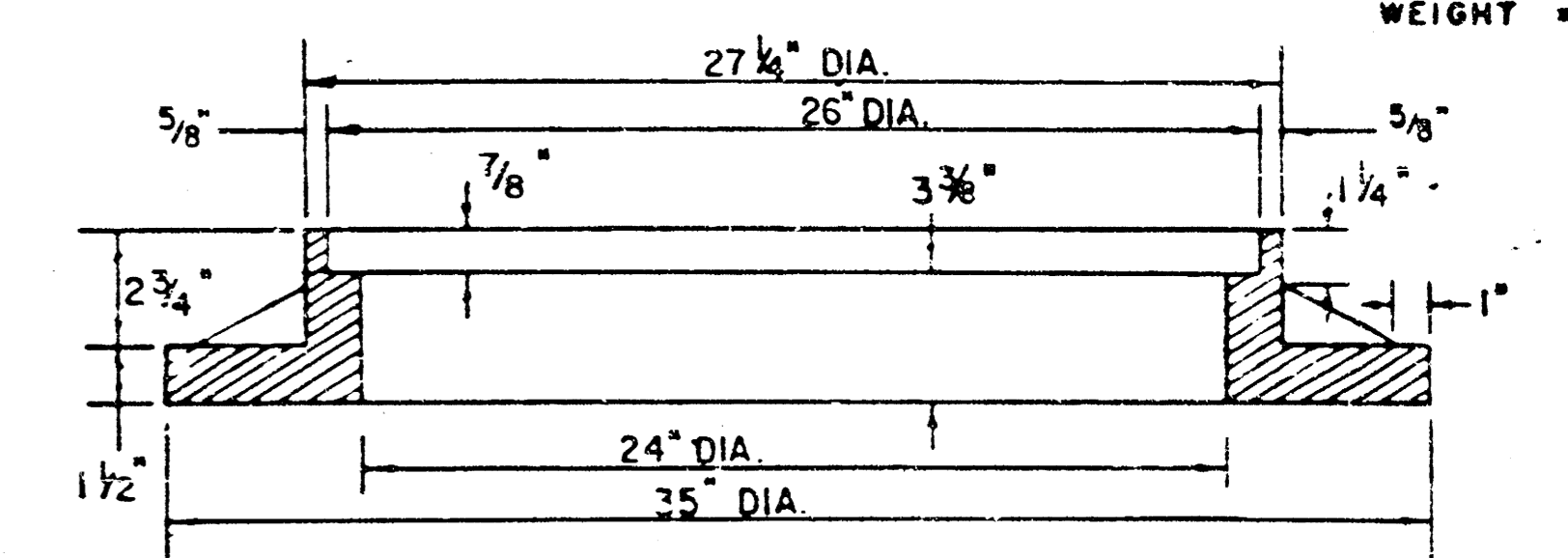
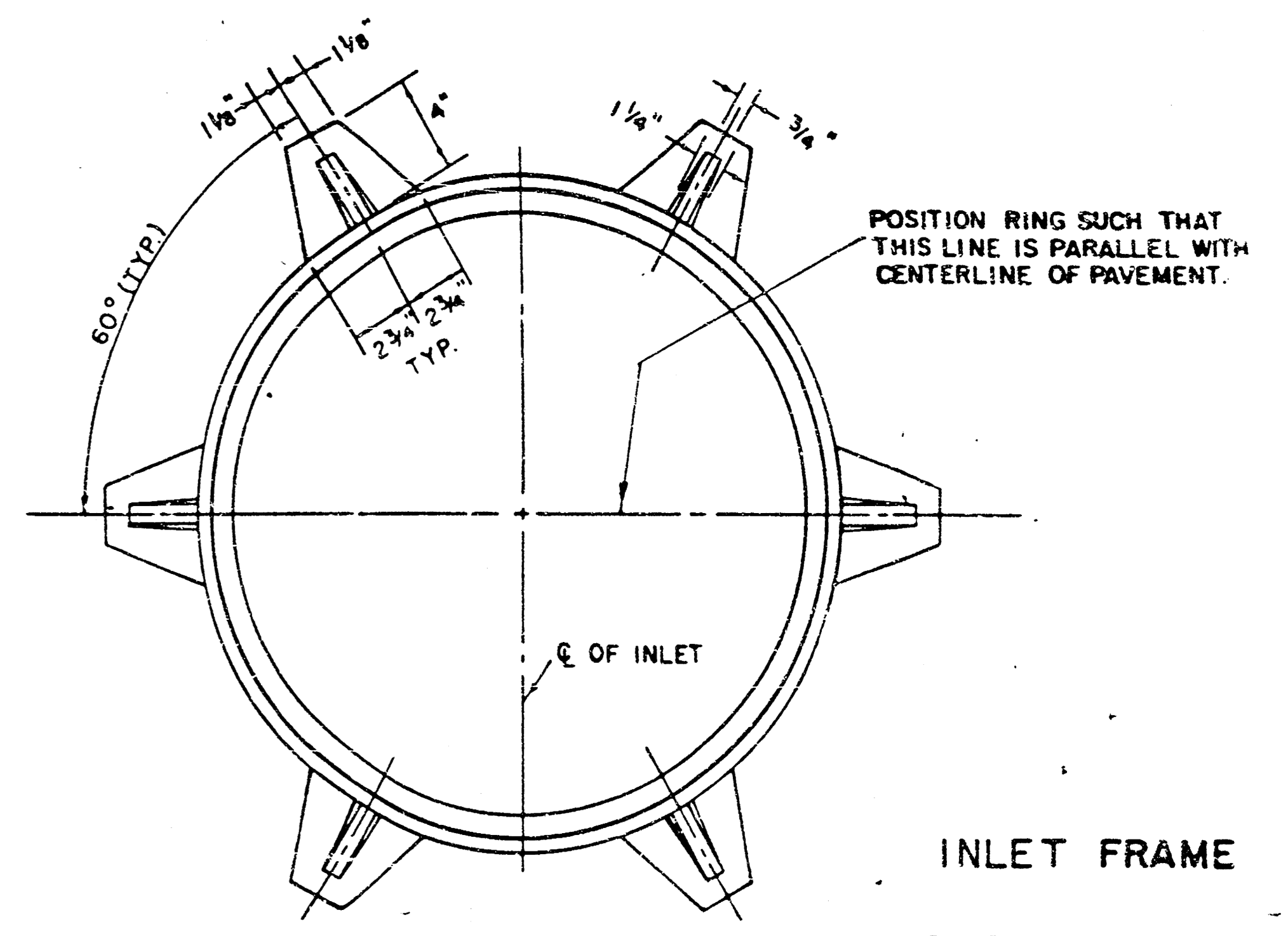
NOTE: INLET TOP REINFORCING SHALL BE SPACED ON 6" MAX. CENTERS. INLET LIDS SHALL BE NOTCHED OUT AS INDICATED TO FACILITATE CONSTRUCTION OF CURB.

NOTE: b₃ bar to be field bent to clear manhole frame.

TRANSITION CURB TO MATCH INSIDE OF INLET WALL THROUGH RADIUS



NOTE: CONCRETE TOPS TO BE INSTALLED ON THIN MORTAR CUSHION TO INSURE FULL SUPPORT ALONG BRICK WALLS. CONCRETE TOPS MAY BE CAST IN PLACE OR PRECAST. CONCRETE USED FOR INLET CONSTRUCTION SHALL BE CONCRETE PAVEMENT MIX.



SEE CITY OF WICHITA STANDARD MANHOLE FRAME AND COVER DETAIL SHEET FOR COVER DETAILS TO BE USED WITH INLET FRAME.

NOTE: CONTRACTOR SHALL HAVE THE OPTION OF CONSTRUCTING 8" BRICK MASONRY WALLS BETWEEN THE CONCRETE INLET BASE AND TOP ON THIS INLET WHEN W = 6'4" AND H = 7'0" OR LESS.

ADDITIONAL CURB AND GUTTER CONSTRUCTION NECESSARY TO CONNECT SET-BACK INLET TO PAVEMENT WILL BE PAID FOR AT THE UNIT PRICE BID FOR EACH INLET HOOKUP.

INLET INVERT SHALL BE SHAPED WITH 8" BACK SAND MIX CONCRETE TO CREATE FLOW CHANNELS AND TO INCREASE HYDRAULIC EFFICIENCY SUCH THAT THE INLET WILL BE SELF-CLEANING BETWEEN ALL INLET AND/OR OUTLET PIPES.

THE ENDS OF ALL PIPES INSTALLED IN INLETS SHALL BE CUT FLUSH WITH THE INSIDE FACE OF THE INLET WALL.

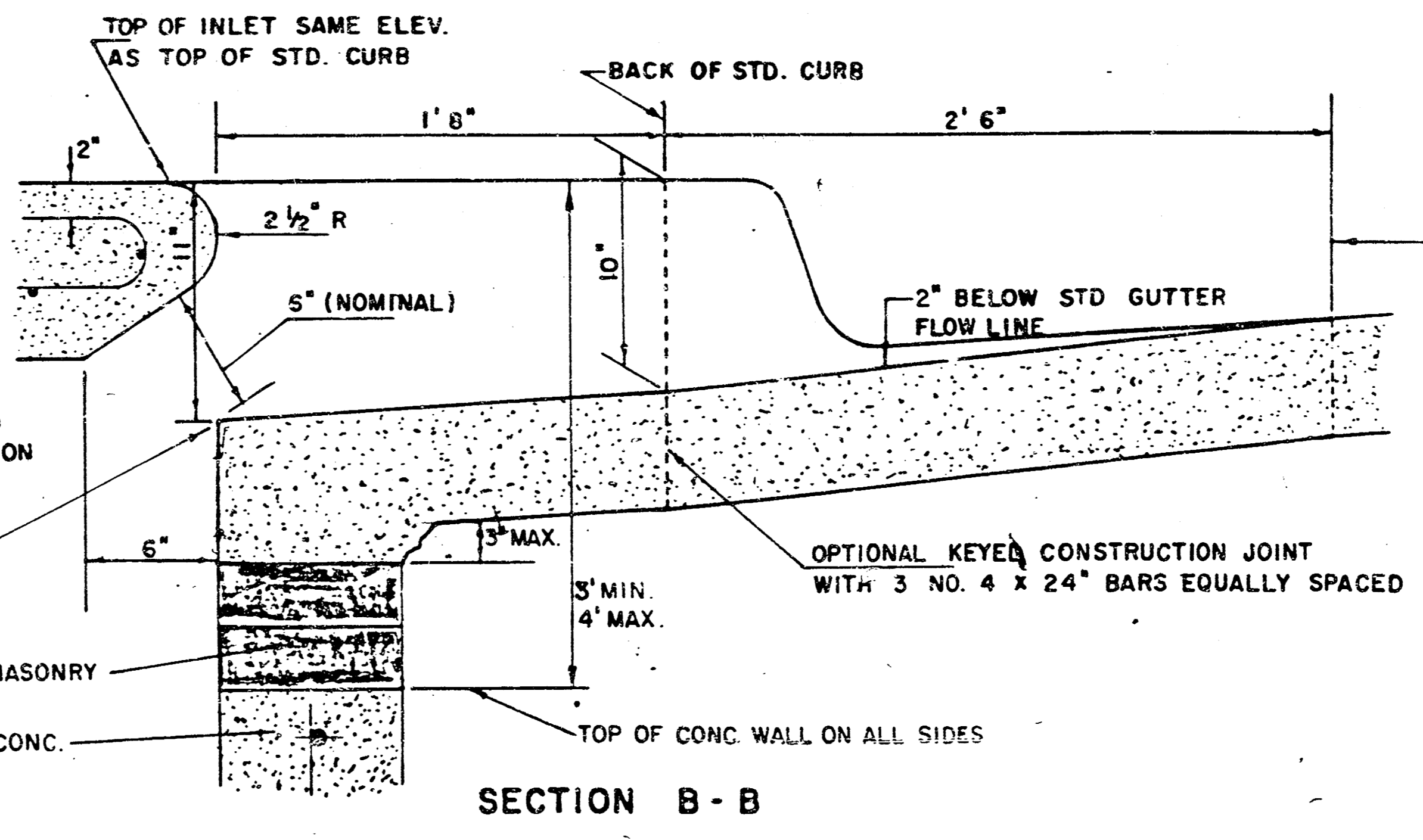
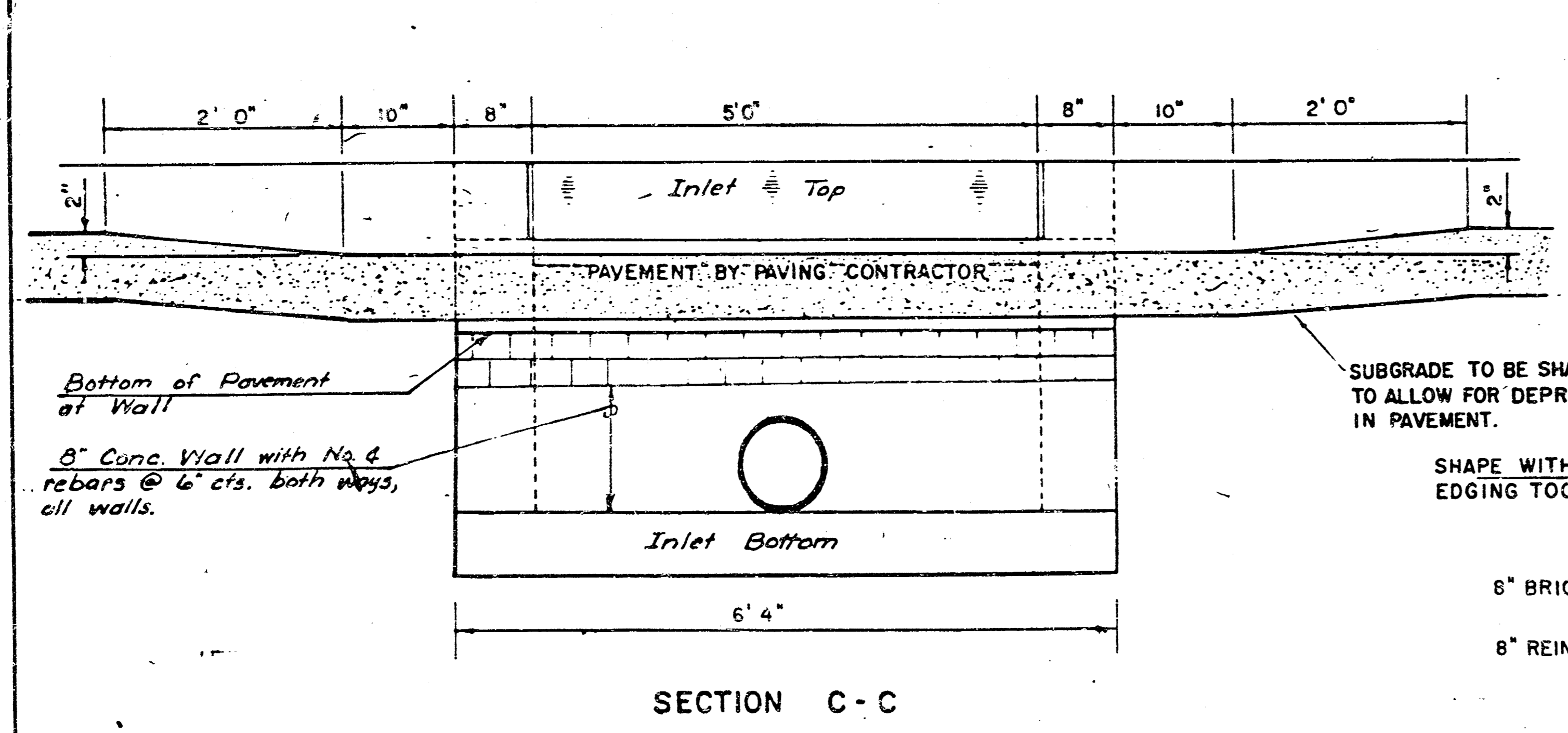
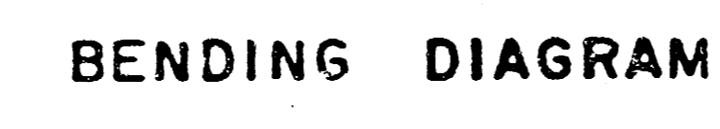
STEEL SCHEDULE

BAR	a ₁	a ₂	a ₃	b ₁	b ₂	b ₃	b ₄	WT. LBS.
NUMBER	4	4	2	1	3	5	7	9
SIZE	#4	#4	#4	#4	#4	#4	#4	#6
LENGTH	W=4'4"	5'7"	6'7"	4'0"	6'1"	-	-	-
	W=5'4"	7'7"	8'7"	5'0"	6'1"	-	-	-
	W=6'4"	9'7"	10'7"	6'0"	6'1"	-	-	-
	W=7'4"	11'7"	12'7"	7'0"	6'1"	-	-	-
	W=8'4"	13'7"	14'7"	8'0"	6'1"	-	-	-

* NOTE: a₃ BARS TO BE PLACED APPROX. 2" BELOW TOP OF INLET COVER

STANDARD CURB INLET PRECAST TOPS

W	PRE-CAST TOP SIZE	PIPE SIZE	CU. YD. CONC.
4' 4"	3' 8" x 6' 4" x 7 1/2"	21" Ø SMALLER	0.38 ±
5' 4"	4' 8" x 6' 4" x 7 1/2"	24" Ø 30"	0.51 ±
6' 4"	5' 8" x 6' 4" x 7 1/2"	36" Ø 42"	0.64 ±
7' 4"	6' 8" x 6' 4" x 7 1/2"	48" Ø 54"	0.77 ±
8' 4"	7' 8" x 6' 4" x 7 1/2"	60" Ø 66"	0.90 ±



REVISED 12-21-1984

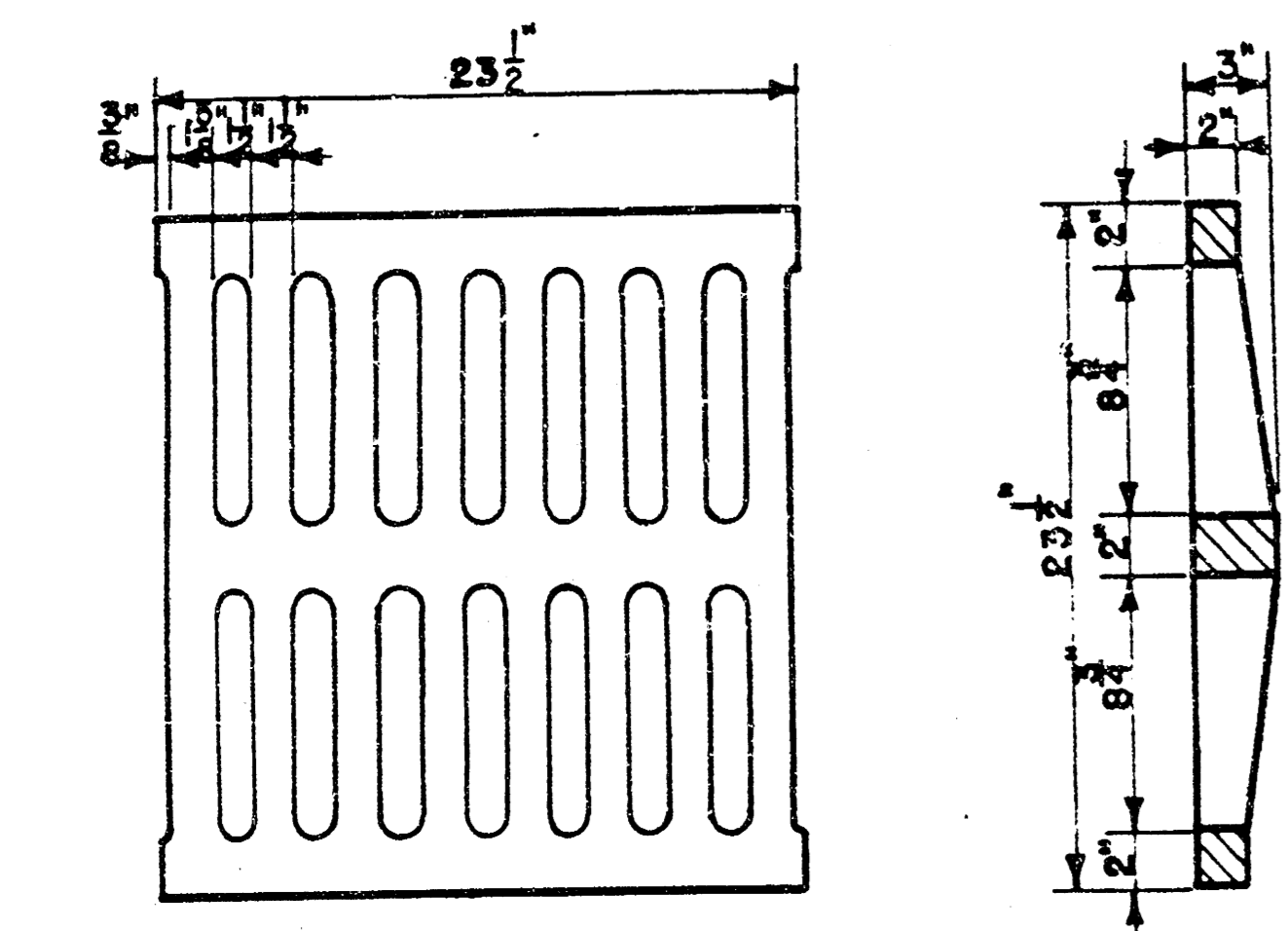
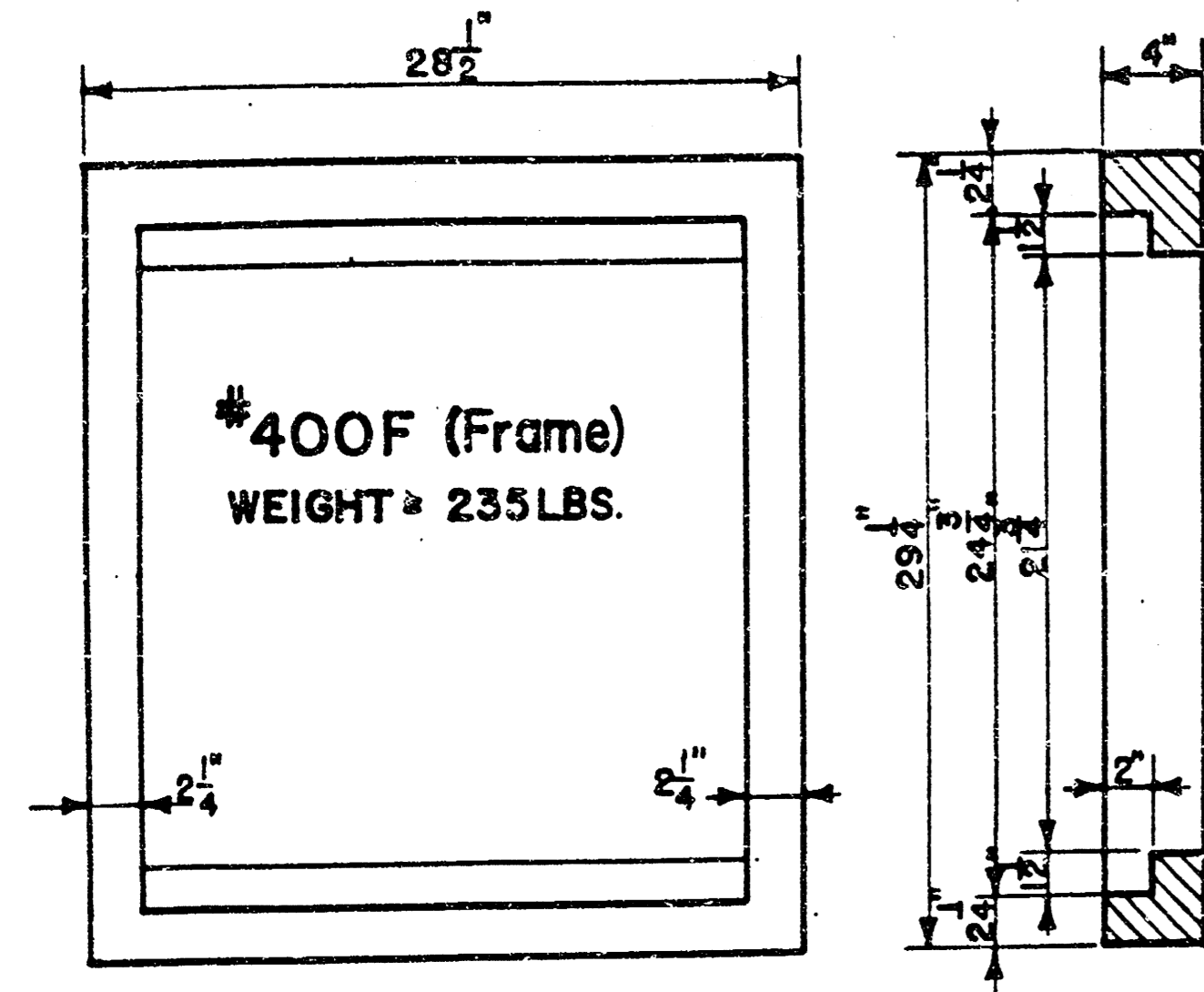
DETAIL STANDARD TYPE IA CURB INLET

CITY OF WICHITA, KANSAS

INLET OPENING = 6" x 5' 0"

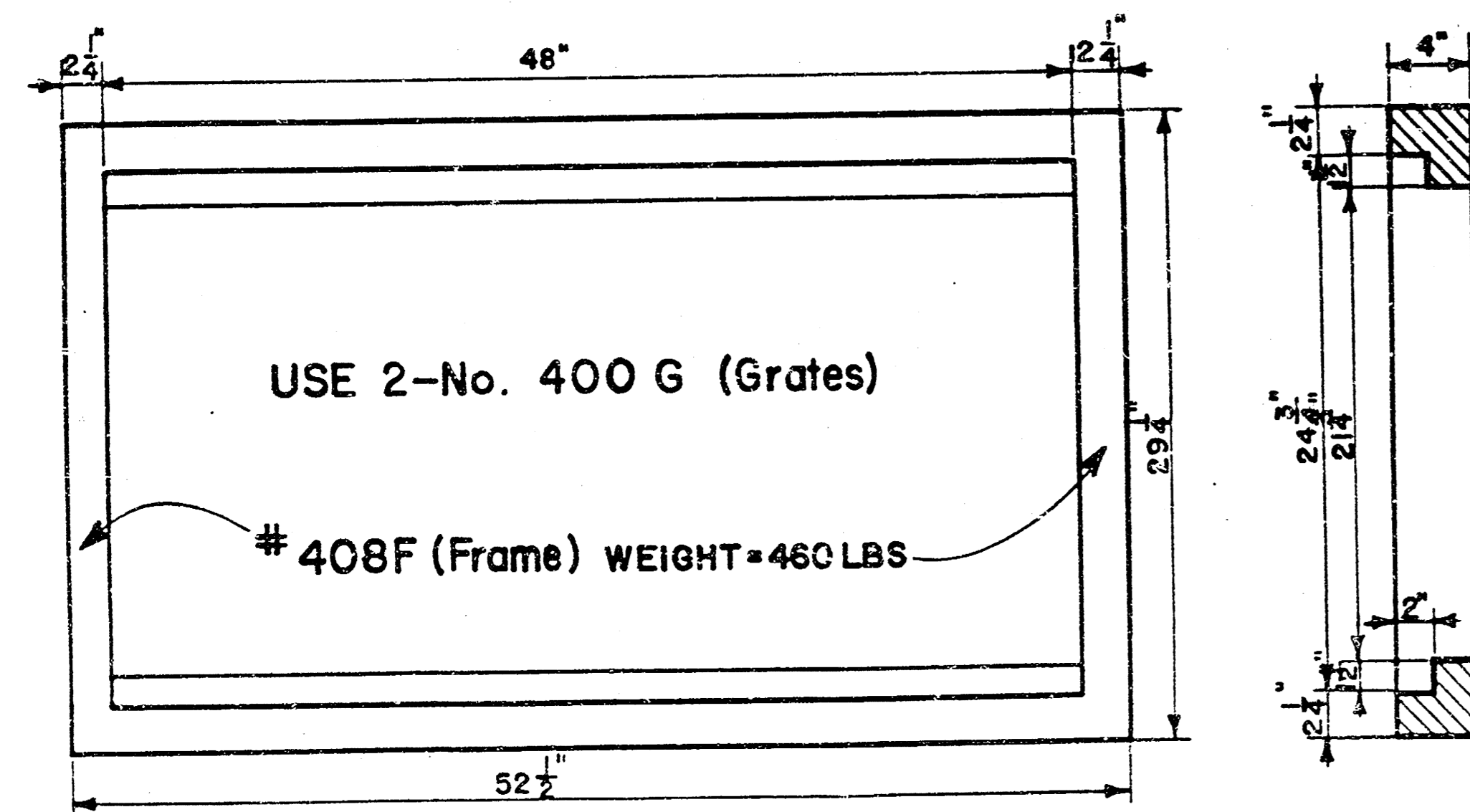
Proj. no. 472-76-245-81501-000-000-001

NOTE: Grates shall be imprinted on the top surface with "CITY OF WICHITA" using letters at least 1" in height. Other marking methods may be used only if approved by the engineer.

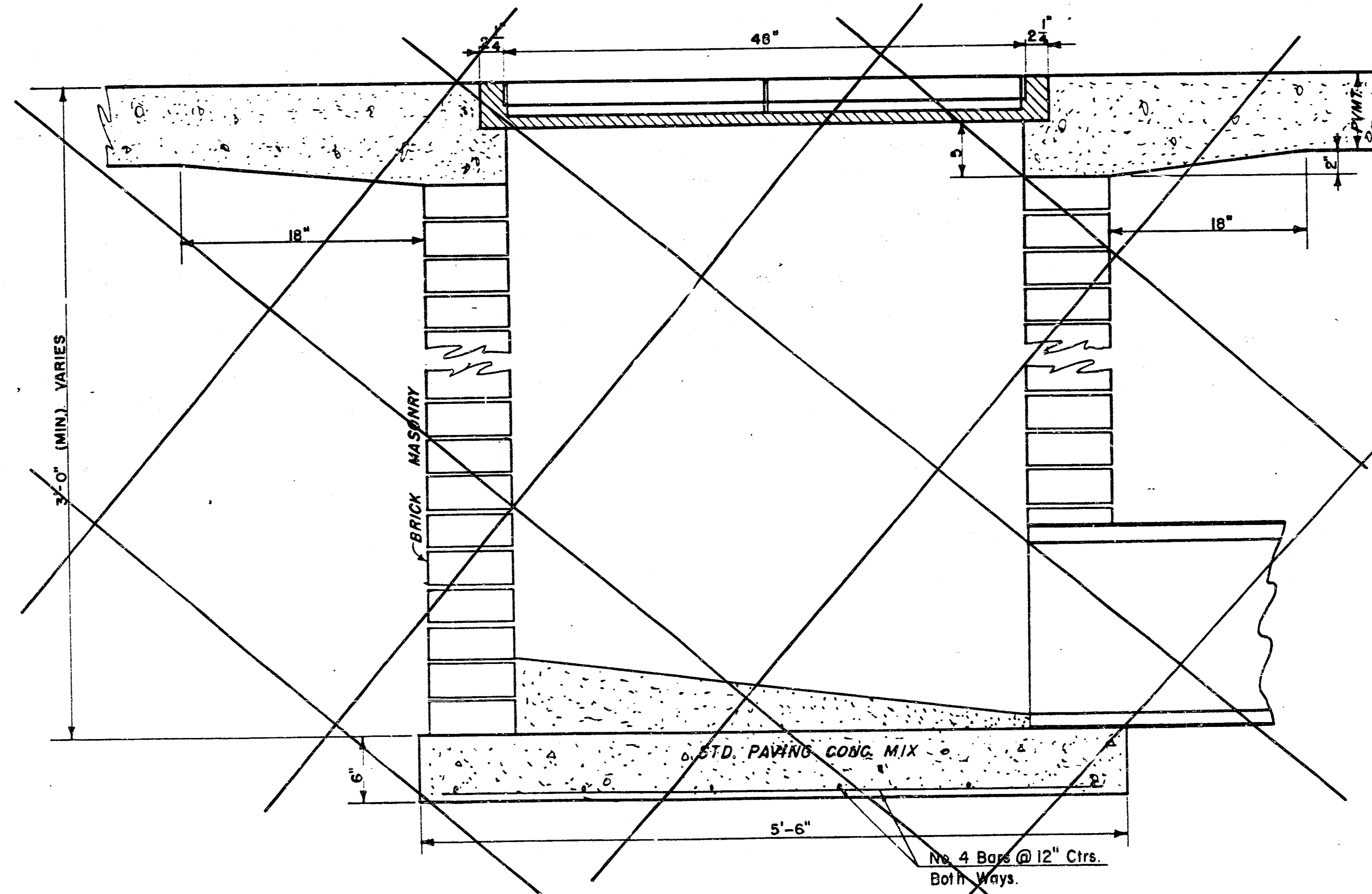
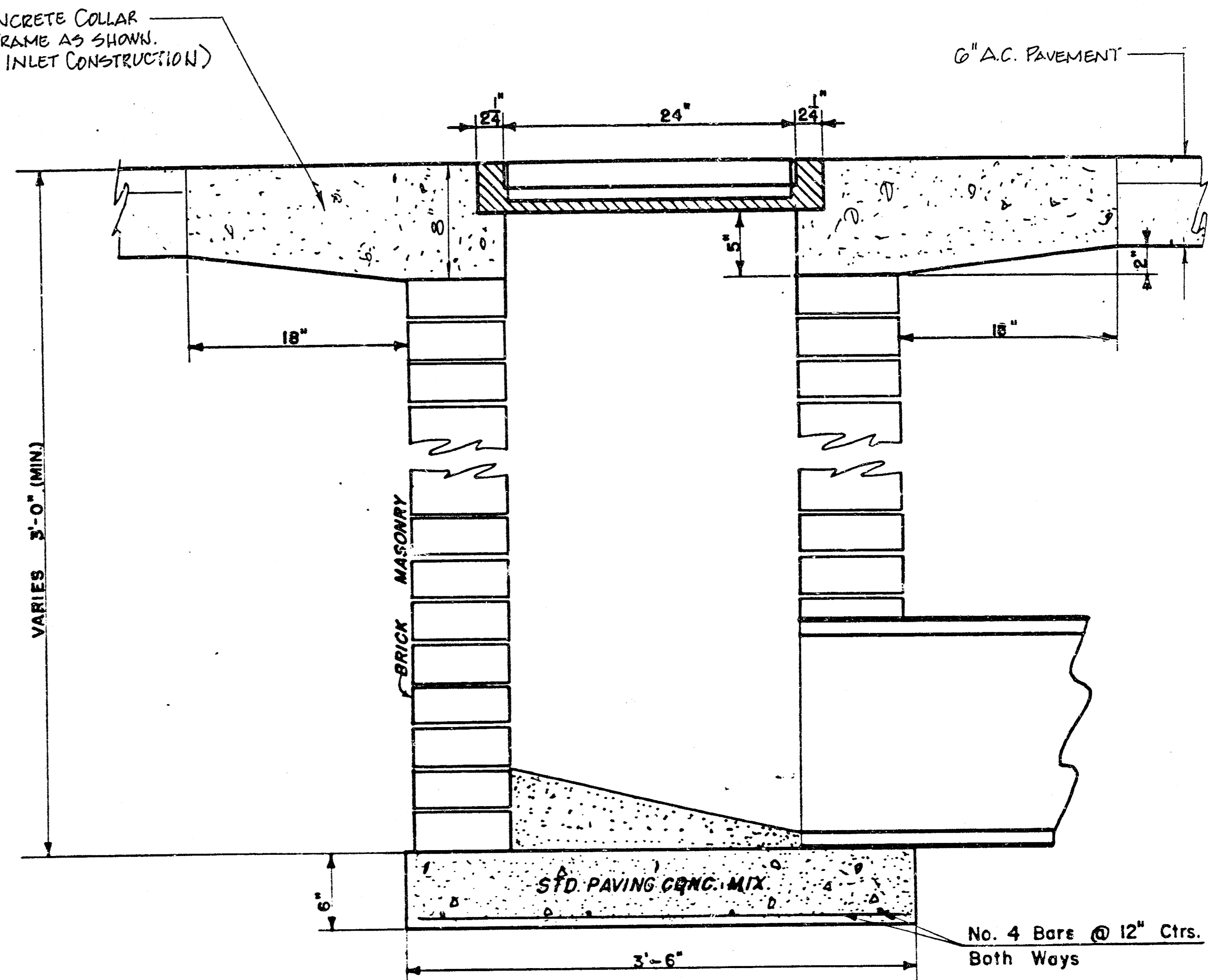
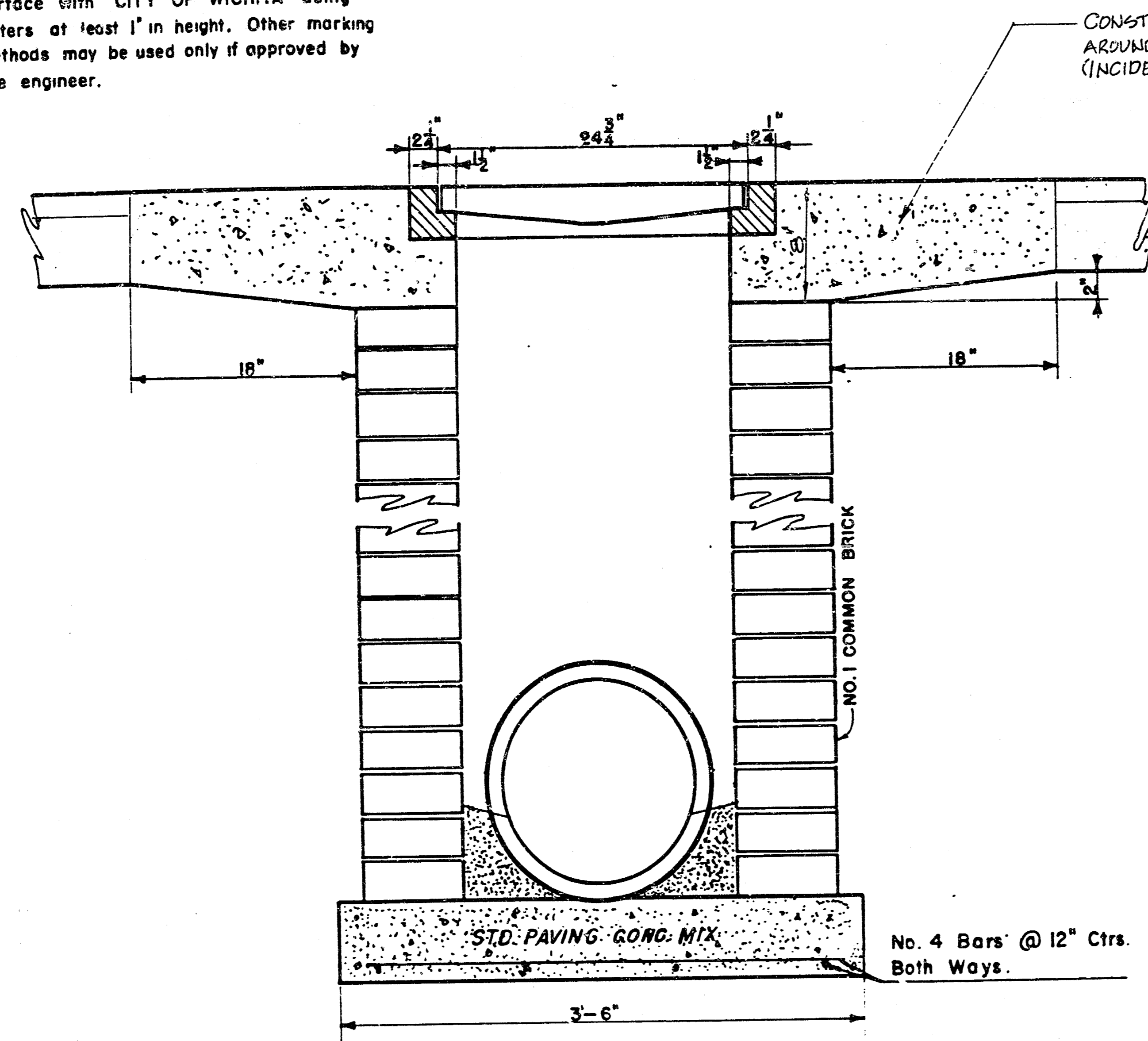


400G (Grate)
WEIGHT = 235 LBS

24"x24" Frame & Grate Detail



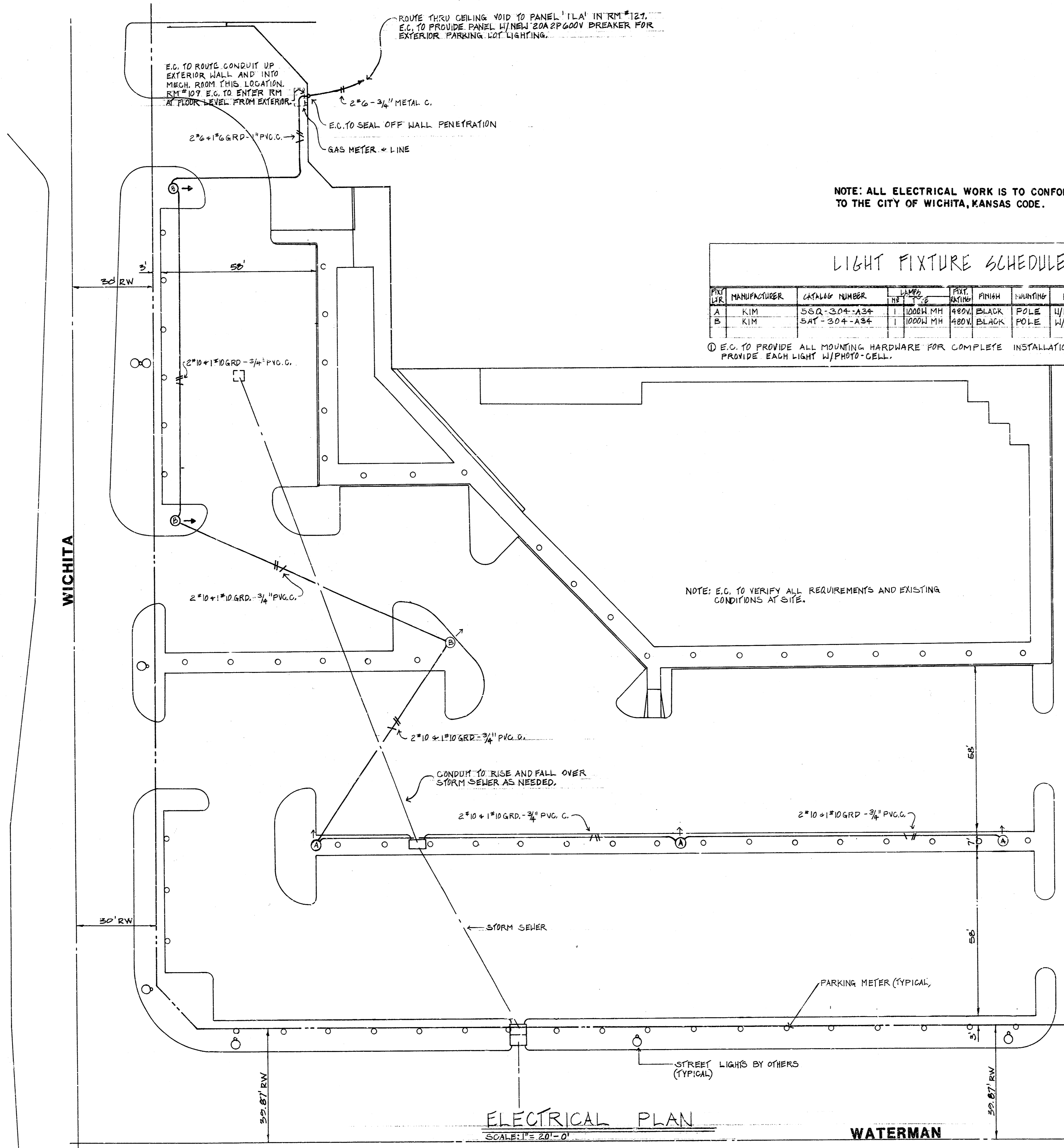
Double 24"x24" Frame Detail



DROP INLET DETAILS

M.E. Lindebak, City Engineer
 City of Wichita, Kansas
 Project # 472-76-245-81501-000-000-001
 Project
 Date:
 Scale: 1-1/2" = 1'-0"

6/9



NOTE: ALL ELECTRICAL WORK IS TO CONFORM TO THE CITY OF WICHITA, KANSAS CODE.

LIGHT FIXTURE SCHEDULE

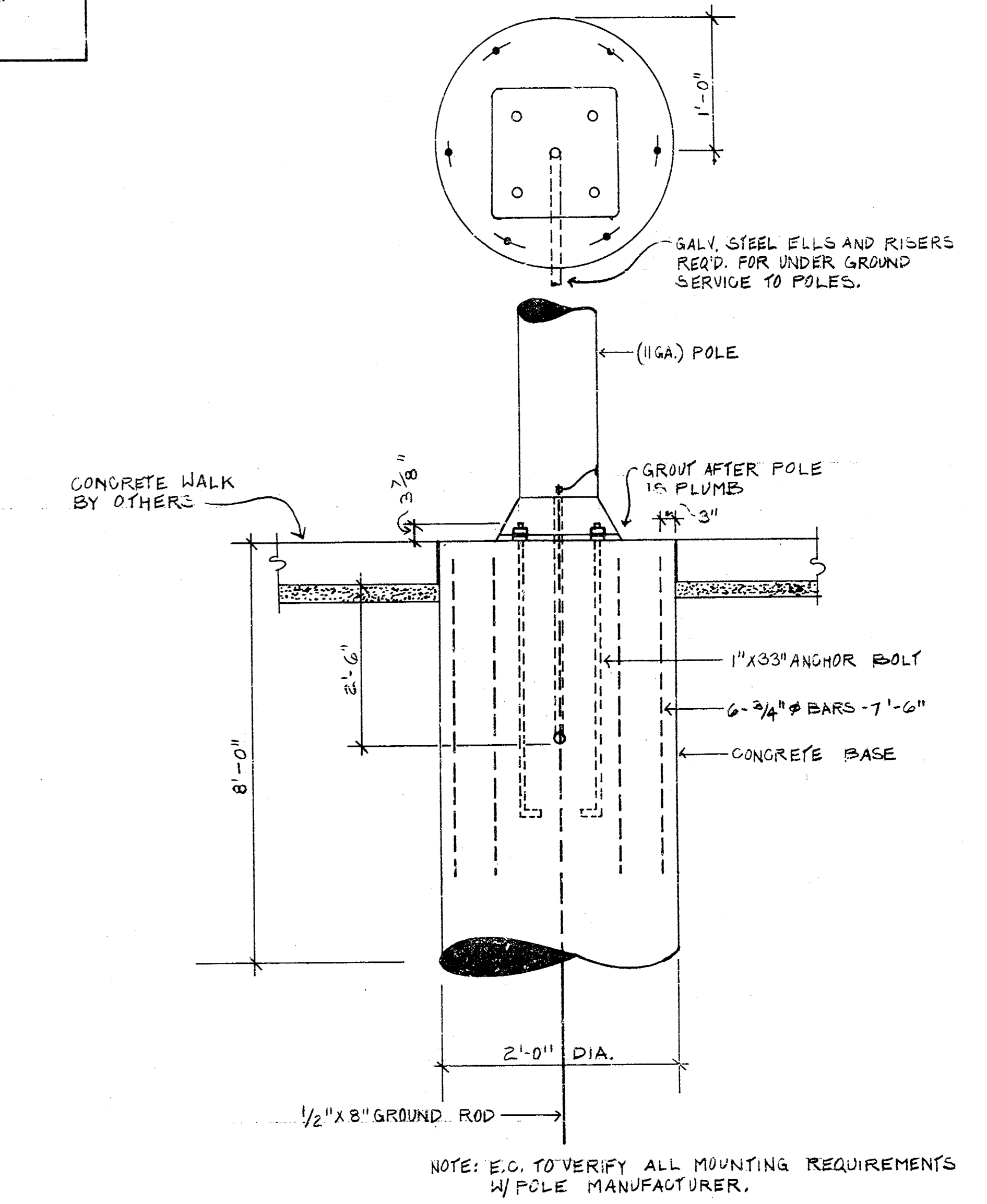
FIX. USE	MANUFACTURER	CATALOG NUMBER	LAMP	FIX. SIZE	FINISH	MOUNTING	REMARKS
A	KIM	SSQ-304-A34	1000W MH	480W	BLACK	POLE	W/PHQ30 POLE ①
B	KIM	SAT-304-A34	1000W MH	480W	BLACK	POLE	W/PHQ30 POLE ②

① E.G. TO PROVIDE ALL MOUNTING HARDWARE FOR COMPLETE INSTALLATION. USE CLEAR BULB. PROVIDE EACH LIGHT W/PHOTO-CELL.

NOTE: E.G. TO VERIFY ALL REQUIREMENTS AND EXISTING CONDITIONS AT SITE.

GENERAL NOTES:

1. ANCHOR BOLTS SHALL BE SET WITH TEMPLATE.
2. POLES SHALL BE PLUM ON THE VERTICAL PLANES 90° APART.
3. CONCRETE SHALL BE TAMPED.
4. E.G. TO PROVIDE GROUND ROD CLAMPS AND HARDWARE FOR PROPER POLE GROUNDING.
5. E.G. TO USE STEEL ELLS + RISERS ON ALL CONDUIT RUNS.
6. ALL CONDUIT TO BE RUN UNDERGROUND 2'-6" UNLESS NOTED OTHERWISE.
7. CONCRETE, REFERENCE STANDARD CITY CONCRETE SPEC.
8. ALL EXPOSED CONDUIT TO BE PAINTED TO MATCH SURROUNDINGS.

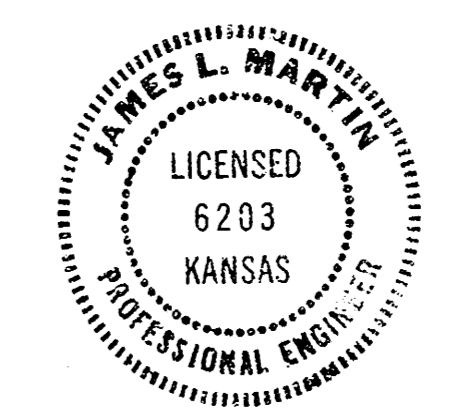


POLE MOUNTING DETAIL N.S.

ELECTRICAL PLAN

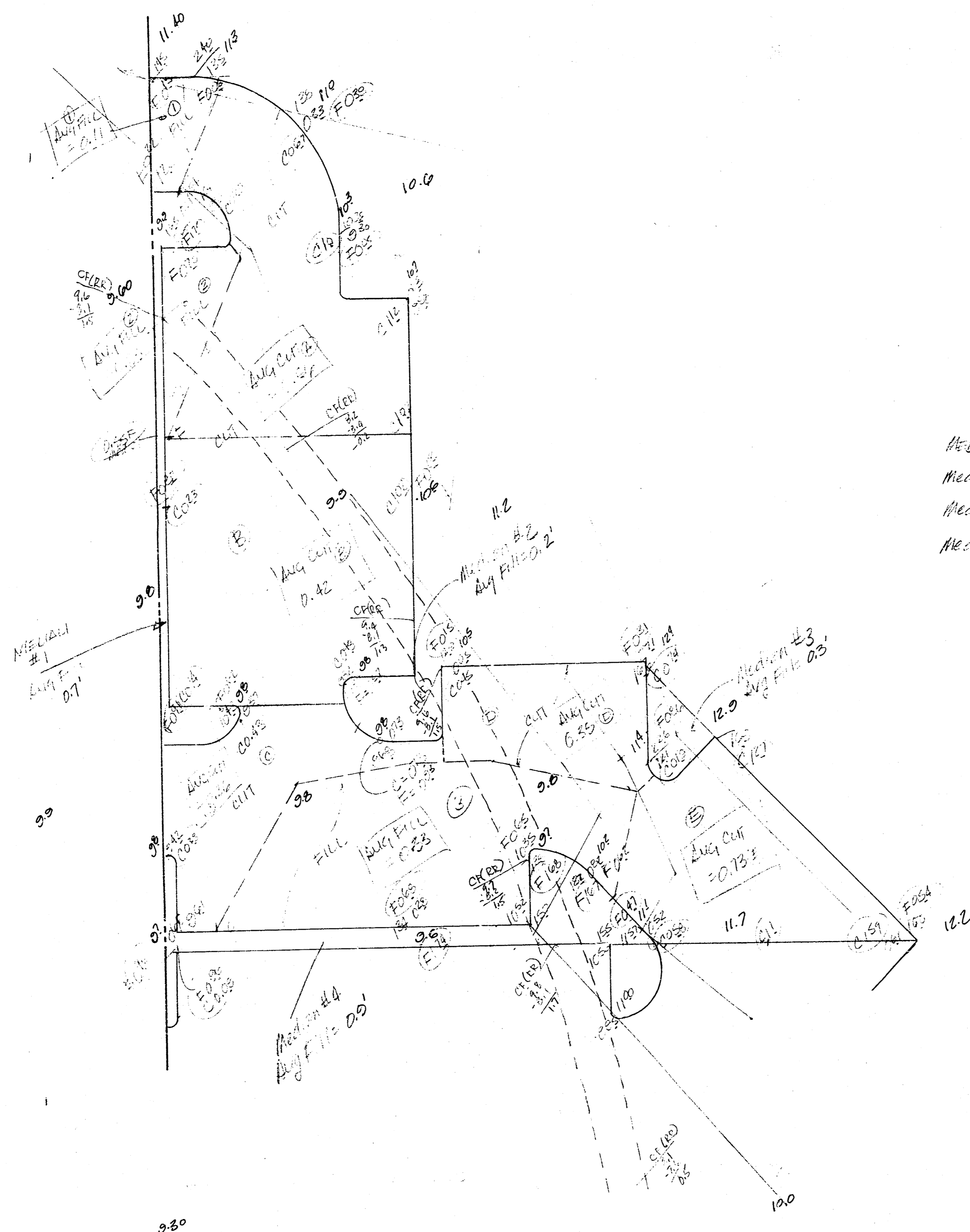
SCALE: 1" = 20'-0"

WATERMAN



PARKING LOT LIGHTING
CENTURY II EXHIBITION CENTER
CITY OF WICHITA, KS
 472-76-245-81501-000-000-001
BAUGHMAN COMPANY, P.A.
 SURVEYING & ENGINEERING
 316-262-7271 • 330 LAURA • WICHITA, KANSAS 67211

7/9



EXCAVATION

AREA A = 3016 ft^2 @ 0.50' Avg Cut = 1508.00 ft^3
 AREA B = 3999.6 ft^2 @ 0.42' Avg Cut = 1679.75 ft^3
 AREA C = 1560 ft^2 @ 0.26' Avg Cut = 405.60 ft^3
 AREA D = 1232 ft^2 @ 0.22' Avg Cut = 271.04 ft^3
 AREA E = 3104 ft^2 @ 0.18' Avg Cut = 558.72 ft^3

 TOTAL = 5772.25 ft^3
 = 214.01 cu yds.

SELECT MEDIUM FILL (90% STD DENSITY)

MEDIAN #1: Area = 570 ft^2 @ 0.17' Avg Fill = 96.90 ft^3
 Median #2: Area = 540 ft^2 @ 0.20' Avg Fill = 108 ft^3
 Median #3: Area = 300 ft^2 @ 0.3' Avg Fill = 90 ft^3
 Median #4: Area = 90 ft^2 @ 0.19' Avg Fill = 17.10 ft^3

 TOTAL = 1383.8 ft^3
 = 51.25 cu yds.

MANIPULATED FILL (95% STD DENSITY)

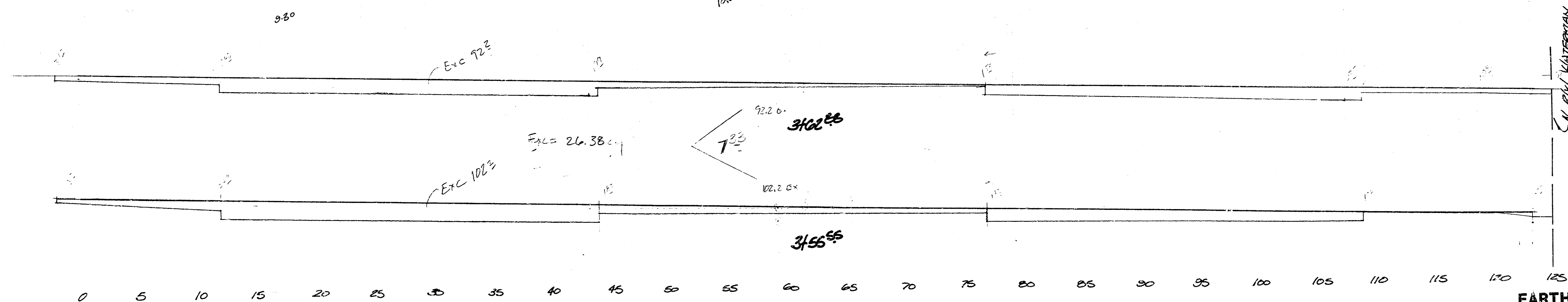
AREA 1 = 312 ft^2 @ 0.11' Avg Fill = 34.32 ft^3
 AREA 2 = 300 ft^2 @ 0.23' Avg Fill = 69.00 ft^3
 AREA 3 = 1200 ft^2 @ 0.22' Avg Fill = 264.00 ft^3

 TOTAL = 1100.25 ft^3
 = 40.15 cu yds.

COMPACTED FILL (90% IN E.R. EXCAVATION (TO BE EXCAVATED 1.5' BELOW EXISTING GROUND BY OTHERS))

305' x 10' x 1.1' Avg. FILL = 3655 cu = 124.2 C.Y.

11.2
11.0
11.5
11.0



EDGE TOTALS
 EXCAVATION: 240.45 cu
 FILL: 51.25 cu
 MANIP. FILL: 40.75
 COMPACT. FILL (90%): 124.25 cu

EARTHWORK
 CENTURY II EXHIBITION CENTER
 PARKING LOT IMPROVEMENTS
 Proj. no. 472-76-245-81501-000-000-001

3/9
9/9