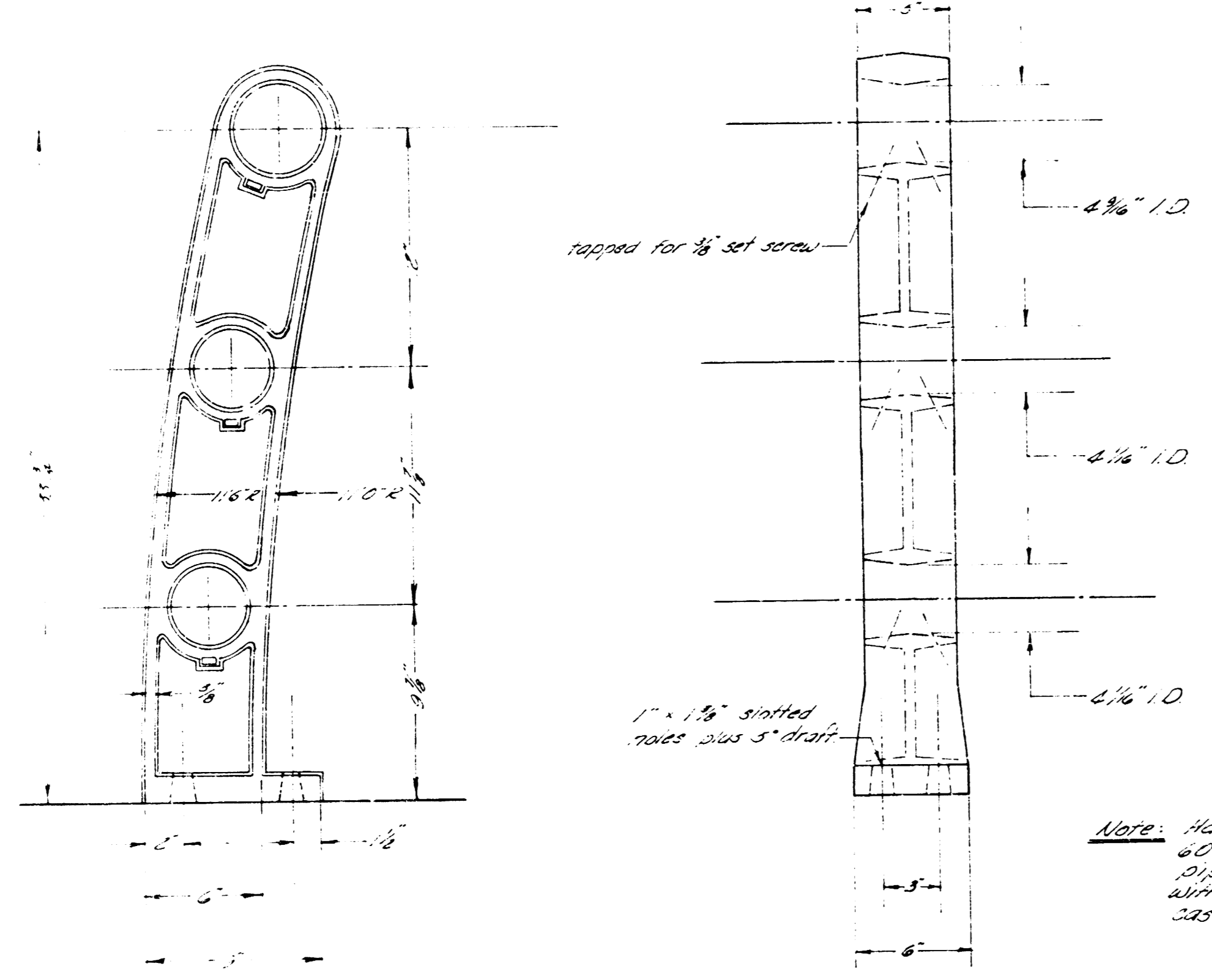


B.M. 103.92 "x" Cut top s cb. Alongside of Hillside
 B.M. 103.96 "x" in Mueller top ft. N.W. cor. Hillside of Glenn Oaks.
 B.M. 106.20 "x" Cut Const. March 1910 "26.39" Hillside.

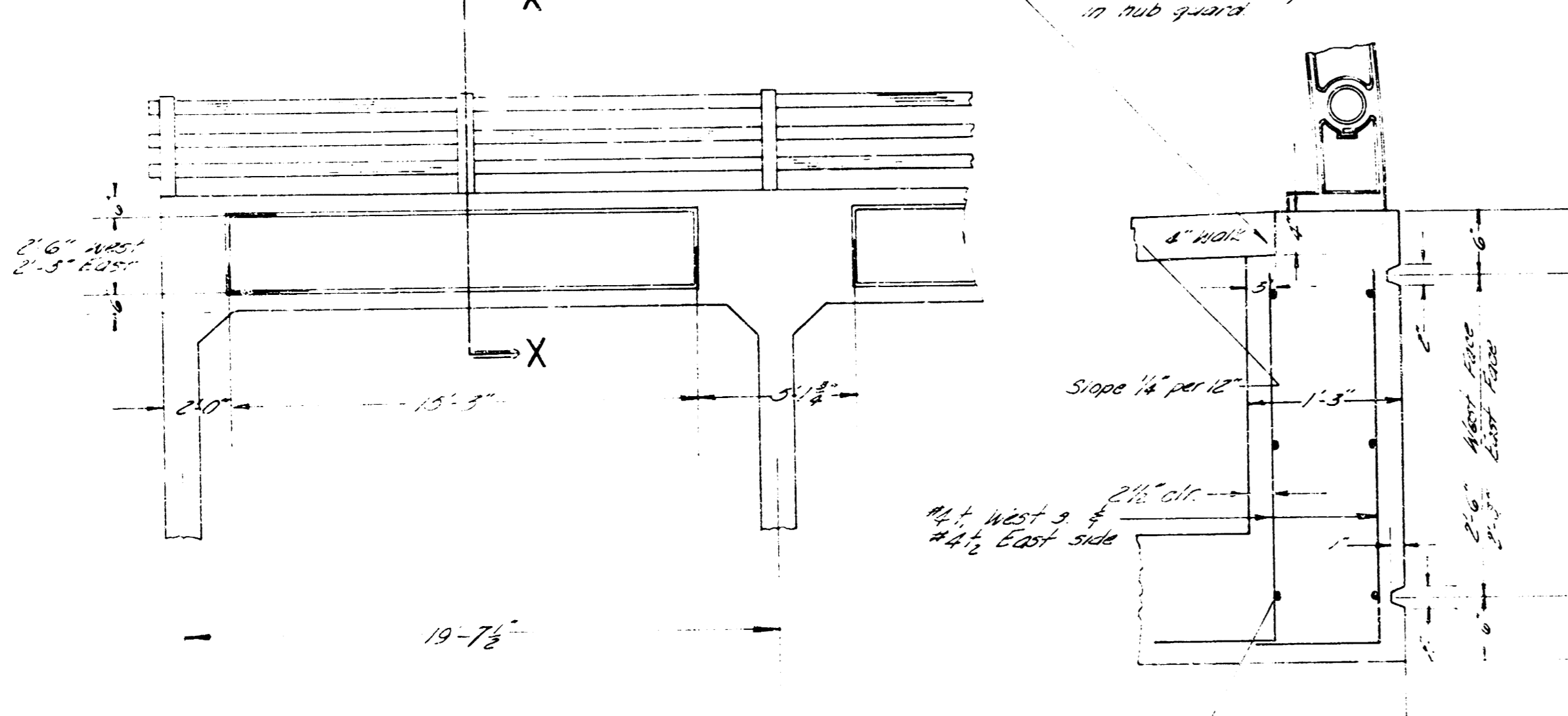
@ Culvert of Point

DRY CREEK BRIDGE PLAN HILLSIDE AVENUE WICHITA, KANSAS B.E. SMITH CITY ENGINEER DATE PROJ. NO. C19-B			
PLAN SCALE 1/8" = 1'-0"	DRAWN BY J. JONES	CHECKED BY	SHEET 1 OF 1

Method of Installation:
 The top of parapet wall shall include installation of aluminum corner parts of complete fabrication & union of parts & shall be secured by aluminum corner clips which be installed in outer parts of top rail shall be aluminum (shown in detail view).
 The parapet wall shall be finished with aluminum corner clips, manufactured by Midwest Pipe Manufacturing Co. or approved equal. Aluminum corner clips shall be painted, unless stated otherwise.



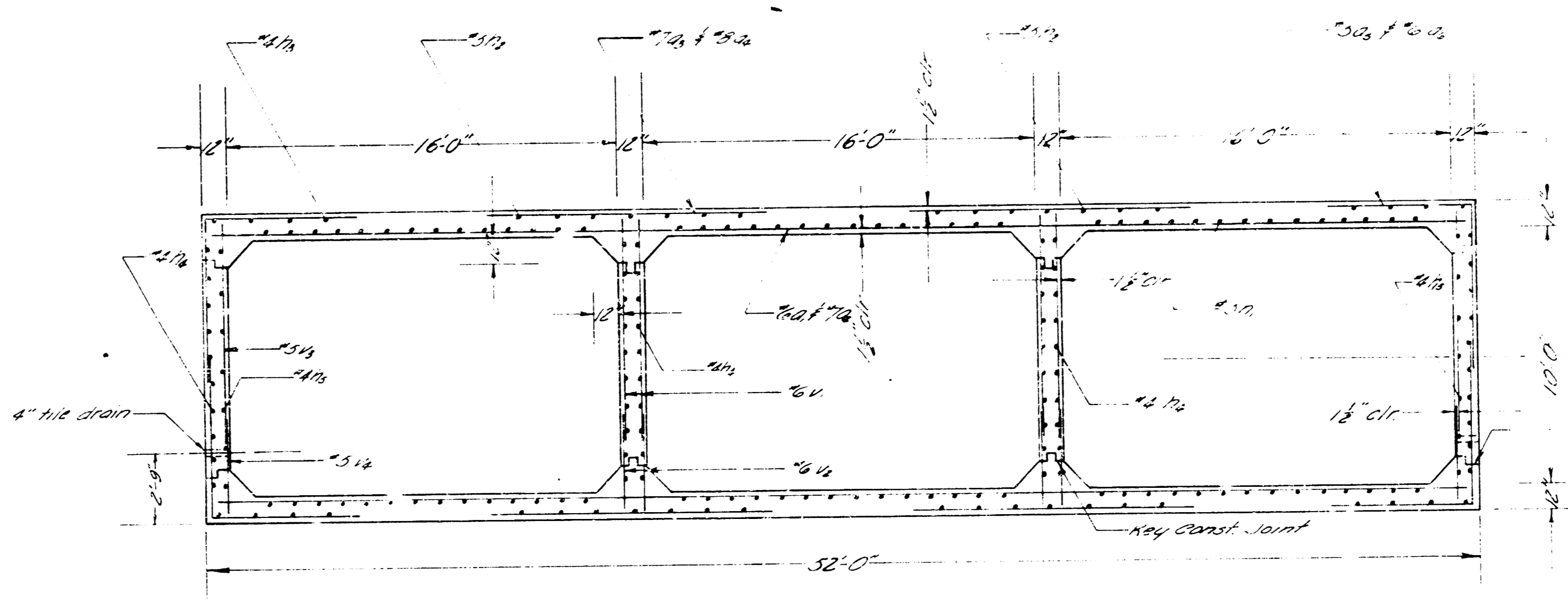
ALUMINUM HANDRAIL DETAIL
 SCALE: 1" = 6"



DESIGN OF PARAPET FACE
 SCALE: 1" = 4"

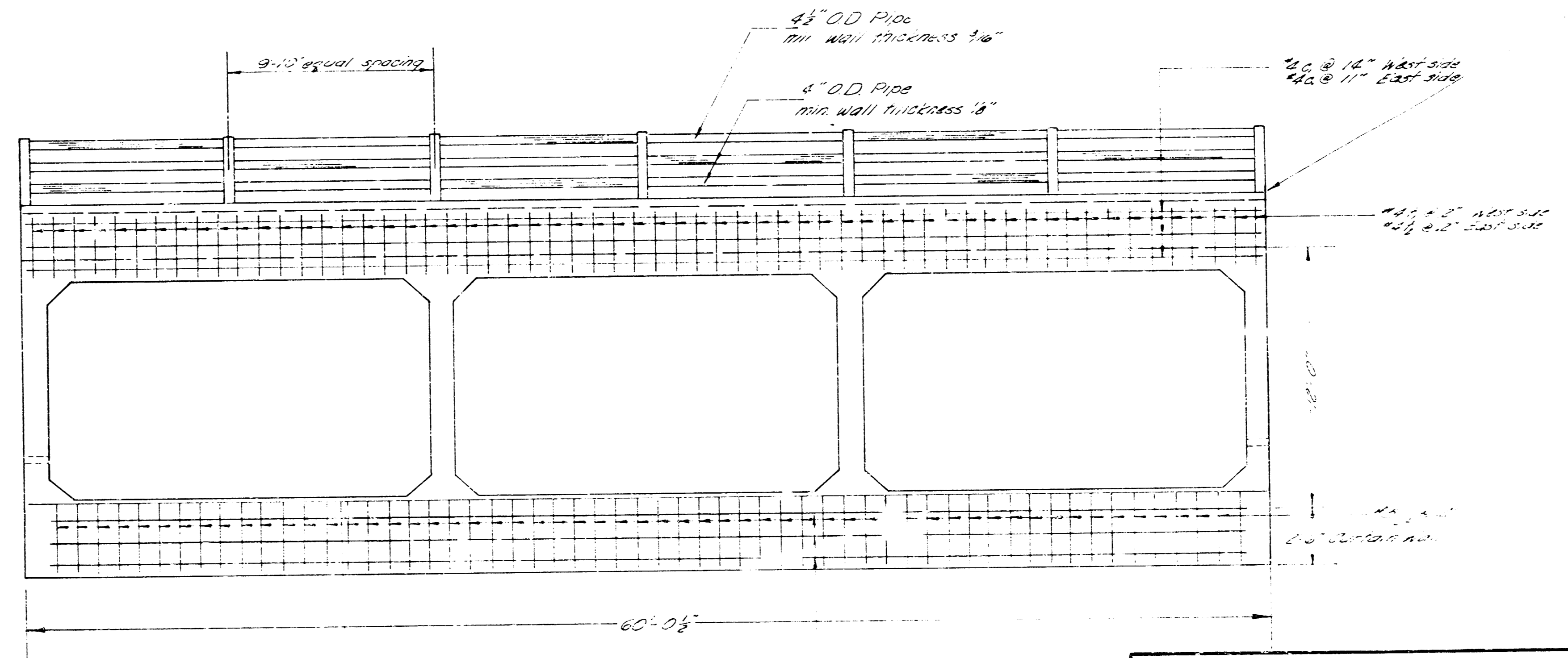
The top surface of the parapet wall shall be finished with aluminum corner clips, manufactured by Midwest Pipe Manufacturing Co. or approved equal. Aluminum corner clips shall be painted, unless stated otherwise.

Note: 4" sidewalk is not to be constructed as a part of this culvert project.



CROSS-SECTION OF BOX
 SECT. A-A
 SCALE: 1" = 4"

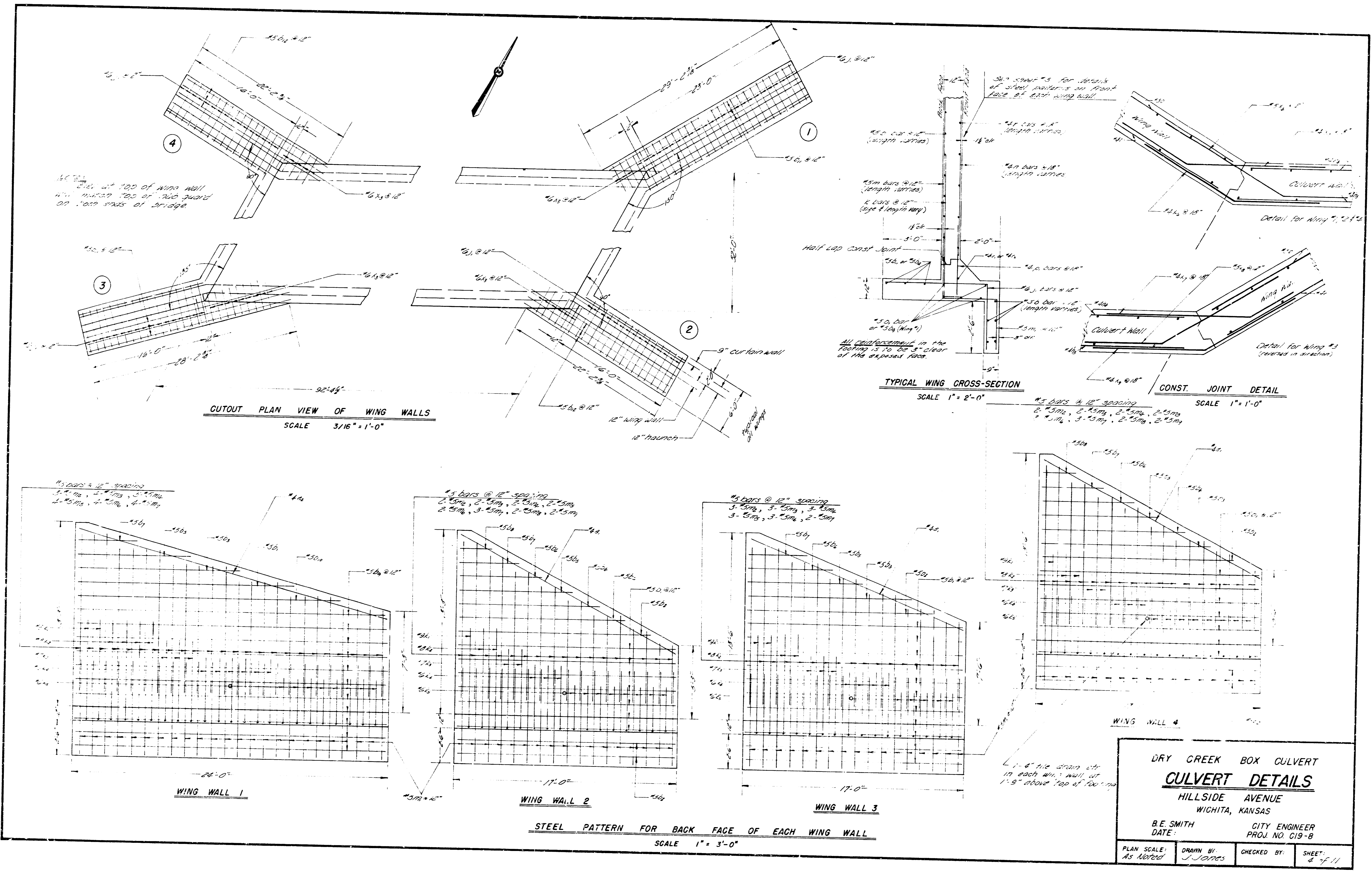
Note: Handrail pipes may be erected in full 40'-0" lengths or in 20'-0" sections. Each pipe is to be capped at the joint section with the manufacturer's std end caps for cast pipe.



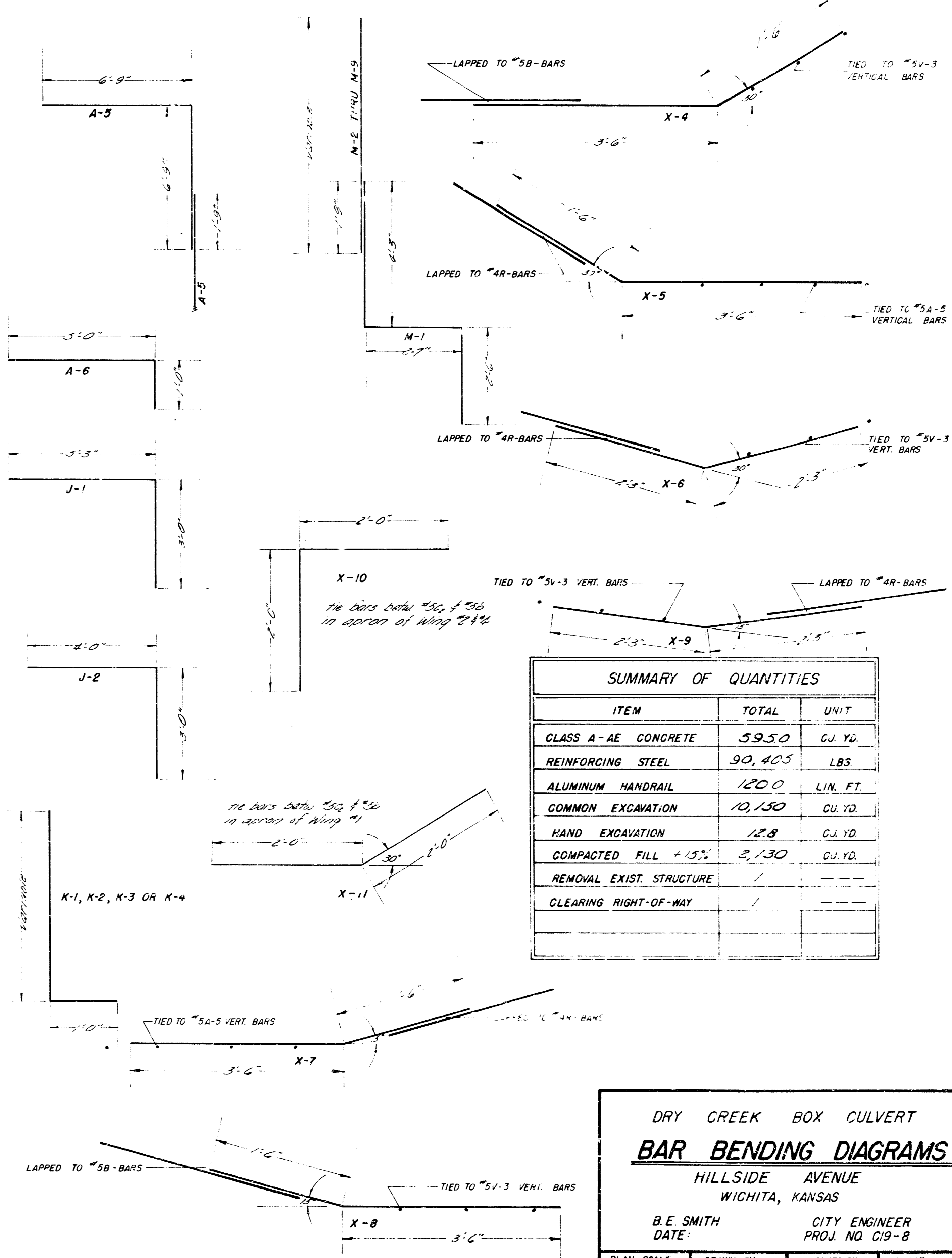
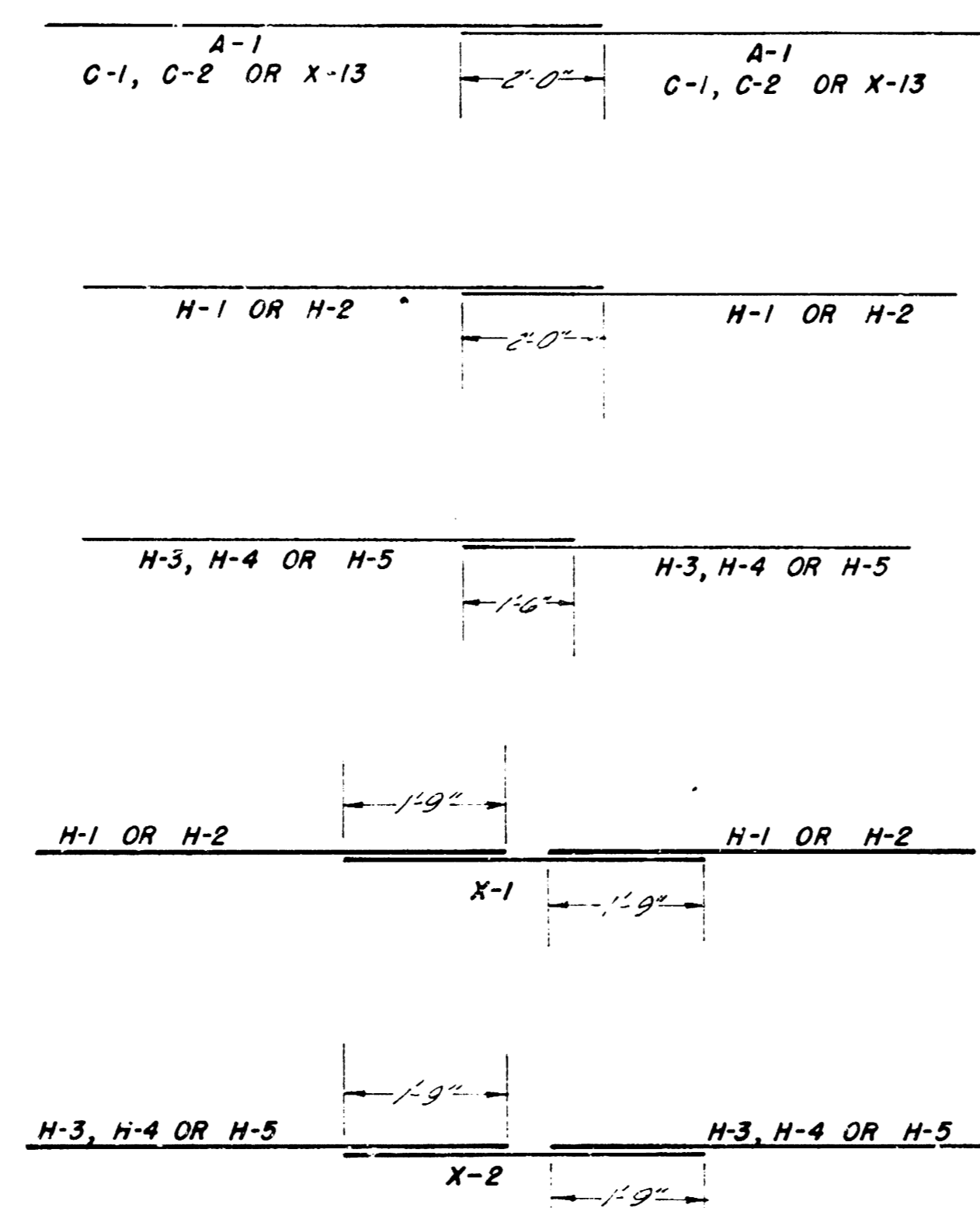
SECT. B-B
 SCALE: 1" = 4"

DRY CREEK BOX CULVERT
CULVERT DETAILS
 HILLSIDE AVENUE
 WICHITA, KANSAS
 B.E. SMITH CITY ENGINEER
 DATE: PROJ. NO. C19-8

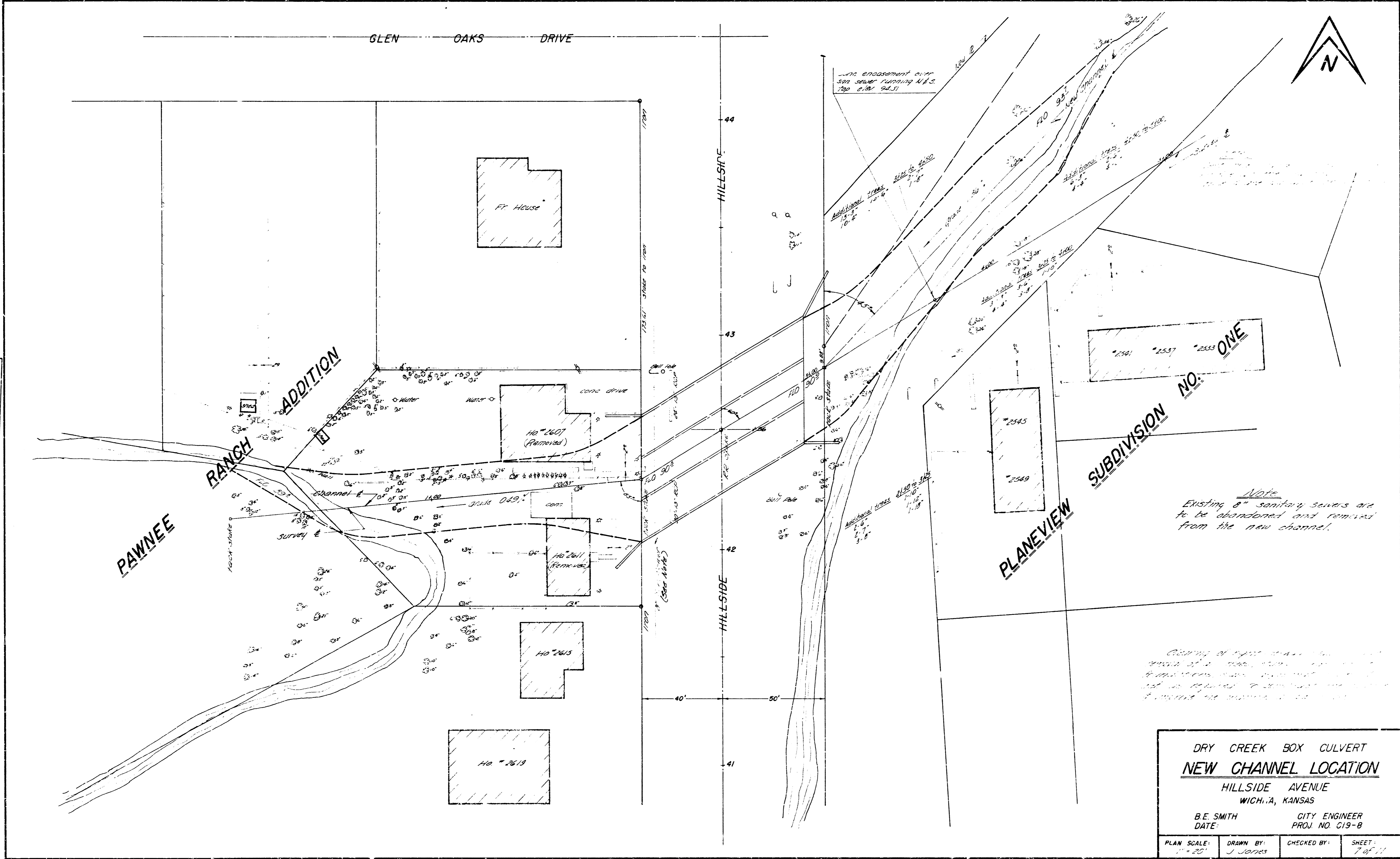
PLAN SCALE: As noted	DRAWN BY: J. Jones	CHECKED BY:	SHEET: 3 of 11
-------------------------	-----------------------	-------------	-------------------



BAR SCHEDULE							
BAR	SIZE	LOCATION	SPACING	LENGTH	NUMBER	WT	
A-1	#6	SLAB	12" CC	30'-0"	324	5,010	
A-2	#4	"	"	15'-0"	320	2,400	
A-3	#4	"	"	15'-0"	320	2,400	
A-4	#6	SLAB W. WALL	"	9'-0"	320	8,777	
A-5	#6	"	"	17'-0"	320	4,356	
A-6	#6	"	"	2'-0"	320	2,806	
B-1	#5	WING WALL	"	16'-6"	38	584	
B-2	#5	"	"	14'-9"	13	200	
B-3	#5	"	"	12'-6"	2	32	
B-4	#5	"	"	10'-9"	2	22	
B-5	#5	"	"	8'-6"	4	35	
B-6	#5	"	"	6'-9"	2	21	
B-7	#5	"	"	4'-5"	4	12	
B-8	#5	"	"	2'-9"	10	29	
B-9	#5	"	"	2'-6"	17	47	
B-10	#5	"	"	20'-0"	1	21	
B-11	#5	"	"	26'-0"	6	175	
B-12	#5	"	"	22'-0"	6	158	
C-1	#6	HUB GUARD	12" CC	30'-0"	24	494	
C-2	#6	CURTAIN WALL	12" CC	28'-6"	12	327	
E-1	#4	WING WALL	"	16'-0"	6	72	
E-2	#4	"	"	24'-0"	2	32	
N-1	#5	SLAB	12" CC	25'-11"	320	8,382	
N-2	#5	"	"	18'-0"	112	2,794	
N-3	#5	"	"	18'-0"	64	1,012	
N-4	#5	CULVERT WALL	12" CC	25'-8"	240	3,794	
N-5	#5	"	"	18'-0"	96	885	
J-1	#6	WING WALL	12" CC	8'-9"	73	925	
J-2	#6	CURTAIN WALL	12" CC	7'-0"	116	807	
K-1	#6	WING WALL	"	8'-0"	10	214	
K-2	#6	"	"	6'-9"	10	138	
K-3	#6	"	"	6'-9"	10	138	
K-4	#6	"	"	6'-9"	10	138	
K-5	#6	"	"	3'-3"	29	142	
M-1	#5	"	"	9'-4"	75	730	
M-2	#5	"	"	11'-6"	10	120	
M-3	#5	"	"	10'-6"	11	120	
M-4	#5	"	"	9'-3"	12	116	
M-5	#5	"	"	6'-3"	11	83	
M-6	#5	"	"	7'-3"	11	83	
M-7	#5	"	"	6'-3"	12	78	
M-8	#5	"	"	5'-1"	6	27	
M-9	#5	"	"	4'-3"	4	18	
N-1	#4	"	"	18' CC	11-3"	10	75
N-2	#4	"	"	"	11-3"	8	55
N-3	#4	"	"	"	9-3"	3	19
N-4	#4	"	"	"	8-0"	10	53
N-5	#4	"	"	"	7-0"	9	42
N-6	#4	"	"	"	5-3"	2	8
N-7	#4	"	"	"	5-6"	5	22
N-8	#4	"	"	"	4-0"	1	8
R-1	#4	"	"	"	3'-6"	52	127
R-1	#4	"	"	"	16'-6"	15	165
R-2	#4	"	"	"	23'-6"	5	78
R-3	#4	"	"	"	14'-6"	2	19
R-4	#4	"	"	"	11'-3"	2	15
R-5	#4	"	"	"	8'-0"	2	11
R-6	#4	"	"	"	5'-6"	2	7
R-7	#4	"	"	"	2'-6"	2	3
R-8	#4	"	"	"	18'-0"	1	8
R-9	#4	"	"	"	4'-6"	2	6
R-10	#4	"	"	"	2'-9"	1	15
V-1	#6	HUB GUARD	12" CC	30'-0"	180	3,711	
V-2	#6	"	"	28'-6"	120	2,944	
V-1	#6	CULVERT WALL	"	9'-3"	376	5,224	
V-2	#6	"	"	14'-3"	376	2,400	
V-3	#6	"	"	16' CC	9-3"	142	1,570
V-4	#6	"	"	2'-3"	142	629	
X-1	#5	SLAB	12" CC	4'-0"	112	487	
X-2	#5	SLAB W. WALL	12" CC	4'-0"	95	240	
X-3	#5	WING WALL	12" CC	3'-6"	23	121	
X-4	#5	"	"	2'-0"	39	203	
X-5	#5	"	"	18' CC	9-3"	27	90
X-6	#5	"	"	4'-6"	27	81	
X-7	#5	"	"	5'-0"	9	30	
X-8	#5	"	"	2'-0"	14	27	
X-9	#5	"	"	4'-0"	7	28	
X-10	#5	"	"	4'-0"	7	28	
X-11	#5	"	"	4'-0"	7	28	
X-12	#5	"	"	30'-10"	8	237	



DRY CREEK BOX CULVERT
BAR BENDING DIAGRAMS
 HILLSIDE AVENUE
 WICHITA, KANSAS
 B. E. SMITH CITY ENGINEER
 DATE: PROJ. NO. C19-B
 PLAN SCALE: 1/4" = 1'-0" DRAWN BY: J. L. G. CHECKED BY: SHEET: 6 of 11



Note
 Existing 8" sanitary sewers are to be abandoned and removed from the new channel.

Planning of right of way...

DRY CREEK BOX CULVERT NEW CHANNEL LOCATION HILLSIDE AVENUE WICH., KANSAS B.E. SMITH CITY ENGINEER DATE: PROJ. NO. G19-B			
PLAN SCALE: 1" = 20'	DRAWN BY: J. Jones	CHECKED BY:	SHEET: 7 of 11