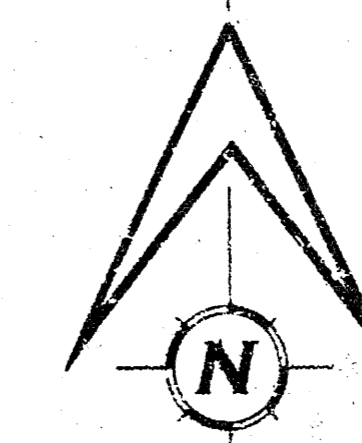
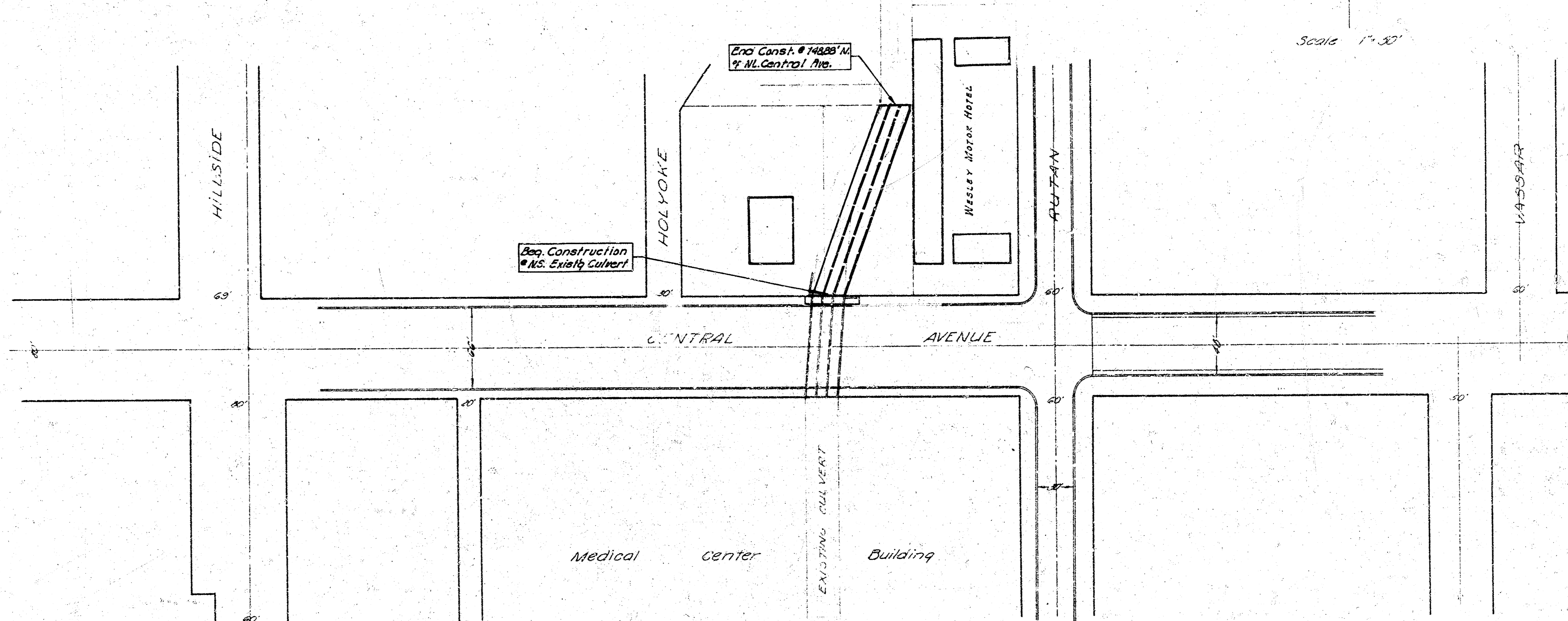


3-8'x5' R.C.B.

EXTENSION OF CULVERT BETWEEN HILLSIDE AND RUTAN ON NORTH SIDE OF CENTRAL AVENUE
RICHARD LINN - CITY ENGINEER
PROJ. NO. - AAKB502022



Scale 1"=30'



NOTE TO CONTRACTOR

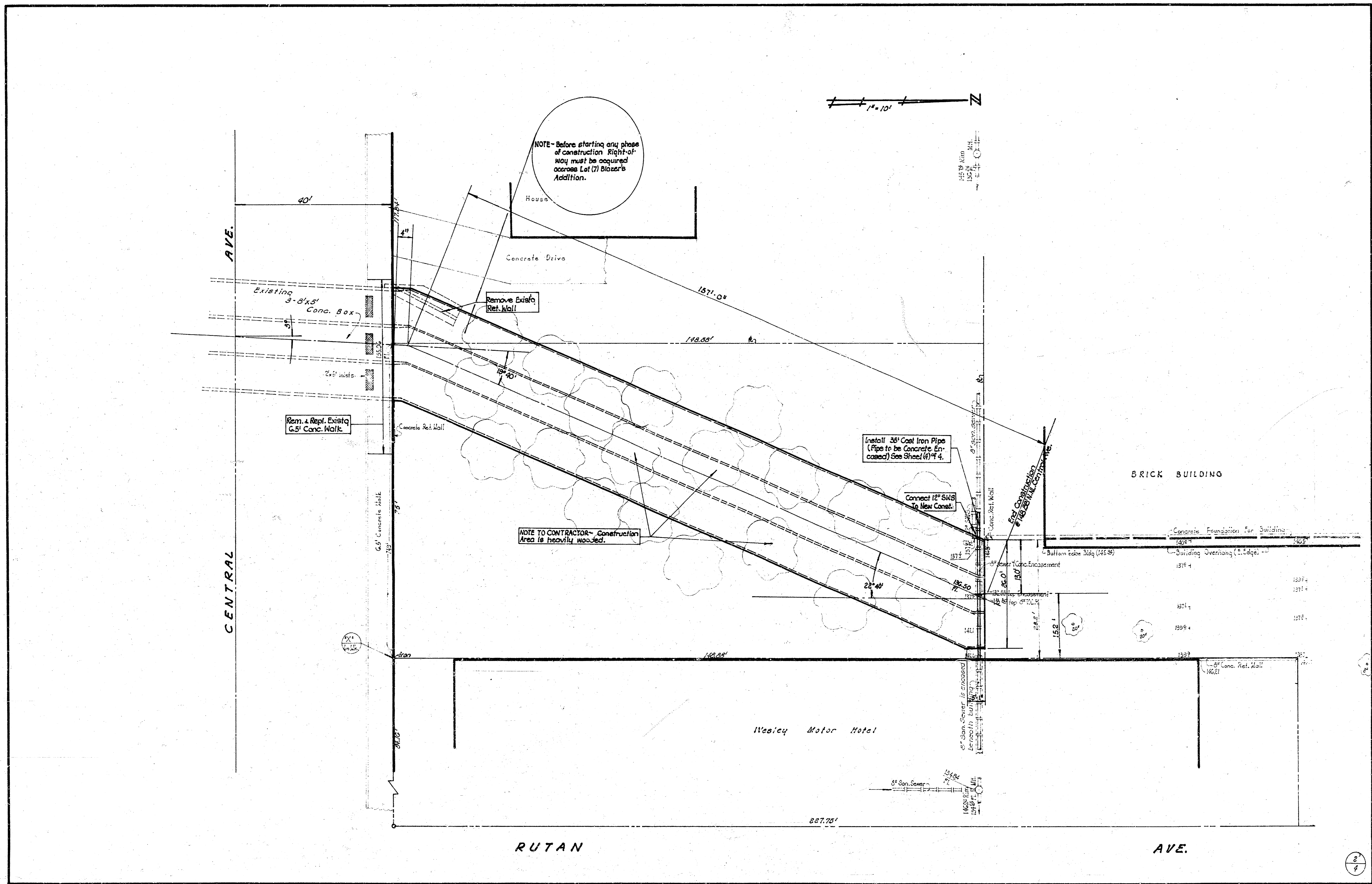
This project will be constructed under the supervision of the CITY ENGINEER and conforming to the SPECIFICATIONS of the CITY OF WICHITA. The CONTRACTOR will reimburse the City of Wichita for all cost of Engineering, Plans, and Inspection.

LOCATION MAP



ENGINEERING DIVISION
DEPARTMENT OF PUBLIC WORKS
CITY OF WICHITA

Don E. Schmeier
Professional Engineer
No. 6311
State of Kansas



NOTE - Before starting any phase of construction Right-of-way must be acquired across Lot (7) Blazer's Addition.

NOTE TO CONTRACTOR - Construction Area is heavily wooded.

Install 36\"/>

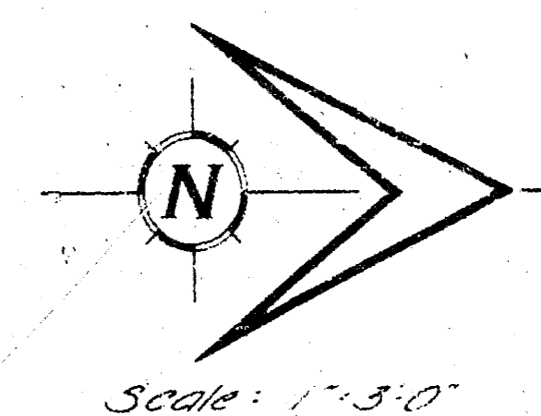
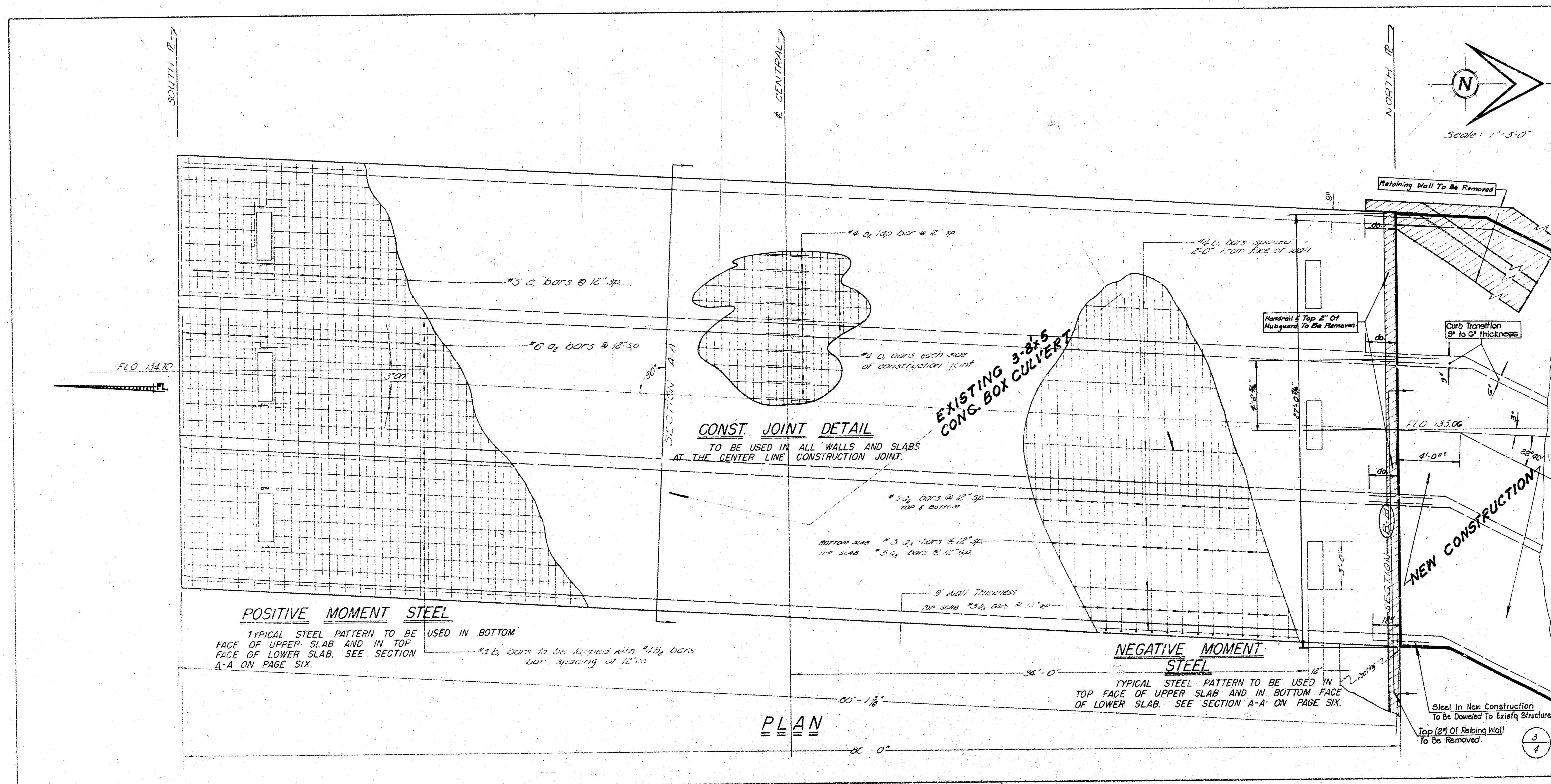
Connect (2\"/>

BRICK BUILDING

Wesley Motor Hotel

RUTAN

AVE.



CONST. JOINT DETAIL
 TO BE USED IN ALL WALLS AND SLABS
 AT THE CENTER LINE CONSTRUCTION JOINT.

POSITIVE MOMENT STEEL
 TYPICAL STEEL PATTERN TO BE USED IN BOTTOM
 FACE OF UPPER SLAB AND IN TOP
 FACE OF LOWER SLAB. SEE SECTION
 A-A ON PAGE SIX.

NEGATIVE MOMENT STEEL
 TYPICAL STEEL PATTERN TO BE USED IN
 TOP FACE OF UPPER SLAB AND IN BOTTOM FACE
 OF LOWER SLAB. SEE SECTION A-A ON PAGE SIX.

PLAN

NEW CONSTRUCTION

**EXISTING 3-8x5
 CONG. BOX CULVERT**

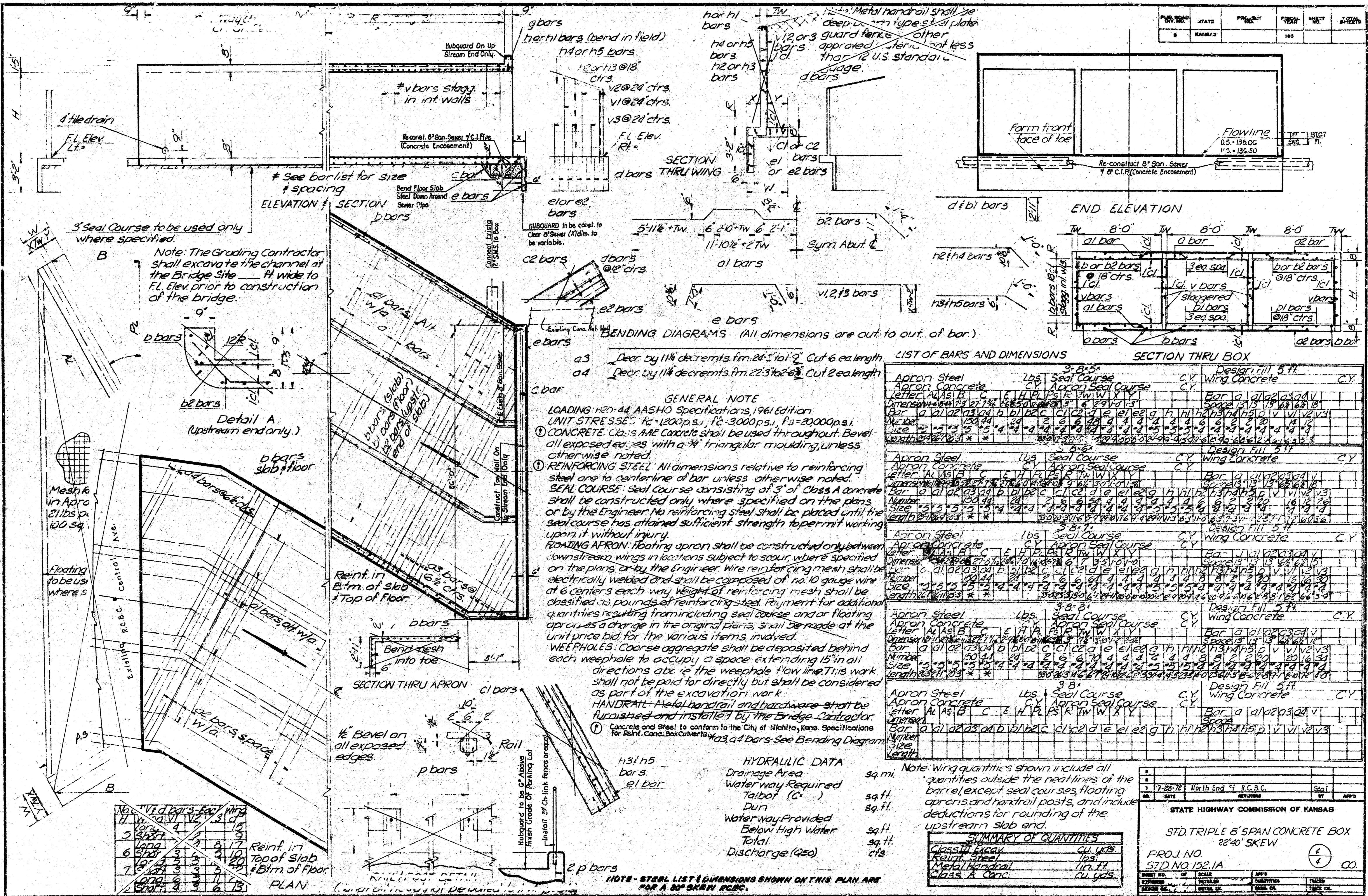
Retaining Wall To Be Removed

Handrail & Top 2" Of
 Hubguard To Be Removed

Curb Transition
 9" to 6" thickness

Steel In New Construction
 To Be Dowelled To Existing Structure.
 Top 2" Of Retaining Wall
 To Be Removed.

NO. 102	STATE	PROJECT	YEAR	NO.	DATE
102	KANSAS	102	1952	102	10/21/52



GENERAL NOTE
 LOADING: H-20-44 AASHTO Specifications, 1961 Edition
 UNIT STRESSES: $f_c = 1200 \text{ p.s.i.}$, $f_s = 30000 \text{ p.s.i.}$
 ① CONCRETE: Class A Concrete shall be used throughout. Bevel all exposed edges with a $\frac{1}{4}$ " triangular mounding, unless otherwise noted.
 ② REINFORCING STEEL: All dimensions relative to reinforcing steel are to centerline of bar unless otherwise noted.
 SEAL COURSE: Seal Course consisting of 3" of Class A concrete shall be constructed only where specified on the plans, or by the Engineer. No reinforcing steel shall be placed until the seal course has attained sufficient strength to permit working upon it without injury.
 FLOATING APRON: Floating apron shall be constructed only between downstream wings in locations subject to scour, where specified on the plans or by the Engineer. Wire reinforcing mesh shall be electrically welded and shall be composed of No. 10 gauge wire at 6 centers each way. Weight of reinforcing mesh shall be classified as pounds of reinforcing steel. Payment for additional quantities resulting from including seal course and/or floating aprons is a change in the original plans, shall be made at the unit price bid for the various items involved.
 WEEPHOLES: Coarse aggregate shall be deposited behind each weephole to occupy a space extending 15" in all directions above the weephole flow line. This work shall not be paid for directly, but shall be considered as part of the excavation work.
 HANDRAIL: Metal handrail and hardware shall be furnished and installed by the Bridge Contractor.
 ③ Concrete and Steel to conform to the City of Wichita, Kans. Specifications for Reinforcing Steel and Concrete.
 a3, a4 bars - See Bending Diagram

LIST OF BARS AND DIMENSIONS

Section	Bar	Qty	Designation	Notes
APRON	Apron Steel	144	3/8" x 3" x 3/8"	Seal Course
	Apron Concrete	144	3/8" x 3" x 3/8"	Seal Course
	Apron Seal Course	144	3/8" x 3" x 3/8"	Seal Course
	Apron Wing Concrete	144	3/8" x 3" x 3/8"	Seal Course
	Apron Wing Steel	144	3/8" x 3" x 3/8"	Seal Course
	Apron Wing Seal Course	144	3/8" x 3" x 3/8"	Seal Course
	Apron Wing Wing Concrete	144	3/8" x 3" x 3/8"	Seal Course
	Apron Wing Wing Steel	144	3/8" x 3" x 3/8"	Seal Course
	Apron Wing Wing Seal Course	144	3/8" x 3" x 3/8"	Seal Course
	Apron Wing Wing Wing Concrete	144	3/8" x 3" x 3/8"	Seal Course
	Apron Wing Wing Wing Steel	144	3/8" x 3" x 3/8"	Seal Course
	Apron Wing Wing Wing Seal Course	144	3/8" x 3" x 3/8"	Seal Course
WING	Wing Steel	144	3/8" x 3" x 3/8"	Seal Course
	Wing Concrete	144	3/8" x 3" x 3/8"	Seal Course
	Wing Seal Course	144	3/8" x 3" x 3/8"	Seal Course
	Wing Wing Concrete	144	3/8" x 3" x 3/8"	Seal Course
	Wing Wing Steel	144	3/8" x 3" x 3/8"	Seal Course
	Wing Wing Seal Course	144	3/8" x 3" x 3/8"	Seal Course
	Wing Wing Wing Concrete	144	3/8" x 3" x 3/8"	Seal Course
	Wing Wing Wing Steel	144	3/8" x 3" x 3/8"	Seal Course
	Wing Wing Wing Seal Course	144	3/8" x 3" x 3/8"	Seal Course
	Wing Wing Wing Wing Concrete	144	3/8" x 3" x 3/8"	Seal Course
	Wing Wing Wing Wing Steel	144	3/8" x 3" x 3/8"	Seal Course
	BOX	Box Steel	144	3/8" x 3" x 3/8"
Box Concrete		144	3/8" x 3" x 3/8"	Seal Course
Box Seal Course		144	3/8" x 3" x 3/8"	Seal Course
Box Wing Concrete		144	3/8" x 3" x 3/8"	Seal Course
Box Wing Steel		144	3/8" x 3" x 3/8"	Seal Course
Box Wing Seal Course		144	3/8" x 3" x 3/8"	Seal Course
Box Wing Wing Concrete		144	3/8" x 3" x 3/8"	Seal Course
Box Wing Wing Steel		144	3/8" x 3" x 3/8"	Seal Course
Box Wing Wing Seal Course		144	3/8" x 3" x 3/8"	Seal Course
Box Wing Wing Wing Concrete		144	3/8" x 3" x 3/8"	Seal Course
Box Wing Wing Wing Steel		144	3/8" x 3" x 3/8"	Seal Course

HYDRAULIC DATA

Drainage Area	sq. mi.
Waterway Required	sq. ft.
Talbot (C)	sq. ft.
Dun	sq. ft.
Waterway Provided	sq. ft.
Below High Water	sq. ft.
Total	sq. ft.
Discharge (Q50)	cfs.

SUMMARY OF QUANTITIES

Class A Conc.	cu. yds.
Reinforcing Steel	lbs.
Metal Handrail	lin. ft.
Class A Conc.	cu. yds.

STATE HIGHWAY COMMISSION OF KANSAS

STD TRIPLE 8' SPAN CONCRETE BOX
 22'0" SKEW

PROJ. NO. 102-1A
 STD NO. 102-1A

NO.	DATE	BY	APP.
1	10/21/52	North End 4' R.C.B.C.	

Reinforcing Steel List

Bar	Qty	Designation
a1	144	3/8" x 3" x 3/8"
a2	144	3/8" x 3" x 3/8"
a3	144	3/8" x 3" x 3/8"
a4	144	3/8" x 3" x 3/8"
a5	144	3/8" x 3" x 3/8"
a6	144	3/8" x 3" x 3/8"
a7	144	3/8" x 3" x 3/8"
a8	144	3/8" x 3" x 3/8"
a9	144	3/8" x 3" x 3/8"
a10	144	3/8" x 3" x 3/8"
a11	144	3/8" x 3" x 3/8"
a12	144	3/8" x 3" x 3/8"
a13	144	3/8" x 3" x 3/8"
a14	144	3/8" x 3" x 3/8"
a15	144	3/8" x 3" x 3/8"
a16	144	3/8" x 3" x 3/8"
a17	144	3/8" x 3" x 3/8"
a18	144	3/8" x 3" x 3/8"
a19	144	3/8" x 3" x 3/8"
a20	144	3/8" x 3" x 3/8"
a21	144	3/8" x 3" x 3/8"
a22	144	3/8" x 3" x 3/8"
a23	144	3/8" x 3" x 3/8"
a24	144	3/8" x 3" x 3/8"
a25	144	3/8" x 3" x 3/8"
a26	144	3/8" x 3" x 3/8"
a27	144	3/8" x 3" x 3/8"
a28	144	3/8" x 3" x 3/8"
a29	144	3/8" x 3" x 3/8"
a30	144	3/8" x 3" x 3/8"
a31	144	3/8" x 3" x 3/8"
a32	144	3/8" x 3" x 3/8"
a33	144	3/8" x 3" x 3/8"
a34	144	3/8" x 3" x 3/8"
a35	144	3/8" x 3" x 3/8"
a36	144	3/8" x 3" x 3/8"
a37	144	3/8" x 3" x 3/8"
a38	144	3/8" x 3" x 3/8"
a39	144	3/8" x 3" x 3/8"
a40	144	3/8" x 3" x 3/8"
a41	144	3/8" x 3" x 3/8"
a42	144	3/8" x 3" x 3/8"
a43	144	3/8" x 3" x 3/8"
a44	144	3/8" x 3" x 3/8"
a45	144	3/8" x 3" x 3/8"
a46	144	3/8" x 3" x 3/8"
a47	144	3/8" x 3" x 3/8"
a48	144	3/8" x 3" x 3/8"
a49	144	3/8" x 3" x 3/8"
a50	144	3/8" x 3" x 3/8"
a51	144	3/8" x 3" x 3/8"
a52	144	3/8" x 3" x 3/8"
a53	144	3/8" x 3" x 3/8"
a54	144	3/8" x 3" x 3/8"
a55	144	3/8" x 3" x 3/8"
a56	144	3/8" x 3" x 3/8"
a57	144	3/8" x 3" x 3/8"
a58	144	3/8" x 3" x 3/8"
a59	144	3/8" x 3" x 3/8"
a60	144	3/8" x 3" x 3/8"
a61	144	3/8" x 3" x 3/8"
a62	144	3/8" x 3" x 3/8"
a63	144	3/8" x 3" x 3/8"
a64	144	3/8" x 3" x 3/8"
a65	144	3/8" x 3" x 3/8"
a66	144	3/8" x 3" x 3/8"
a67	144	3/8" x 3" x 3/8"
a68	144	3/8" x 3" x 3/8"
a69	144	3/8" x 3" x 3/8"
a70	144	3/8" x 3" x 3/8"
a71	144	3/8" x 3" x 3/8"
a72	144	3/8" x 3" x 3/8"
a73	144	3/8" x 3" x 3/8"
a74	144	3/8" x 3" x 3/8"
a75	144	3/8" x 3" x 3/8"
a76	144	3/8" x 3" x 3/8"
a77	144	3/8" x 3" x 3/8"
a78	144	3/8" x 3" x 3/8"
a79	144	3/8" x 3" x 3/8"
a80	144	3/8" x 3" x 3/8"
a81	144	3/8" x 3" x 3/8"
a82	144	3/8" x 3" x 3/8"
a83	144	3/8" x 3" x 3/8"
a84	144	3/8" x 3" x 3/8"
a85	144	3/8" x 3" x 3/8"
a86	144	3/8" x 3" x 3/8"
a87	144	3/8" x 3" x 3/8"
a88	144	3/8" x 3" x 3/8"
a89	144	3/8" x 3" x 3/8"
a90	144	3/8" x 3" x 3/8"
a91	144	3/8" x 3" x 3/8"
a92	144	3/8" x 3" x 3/8"
a93	144	3/8" x 3" x 3/8"
a94	144	3/8" x 3" x 3/8"
a95	144	3/8" x 3" x 3/8"
a96	144	3/8" x 3" x 3/8"
a97	144	3/8" x 3" x 3/8"
a98	144	3/8" x 3" x 3/8"
a99	144	3/8" x 3" x 3/8"
a100	144	3/8" x 3" x 3/8"