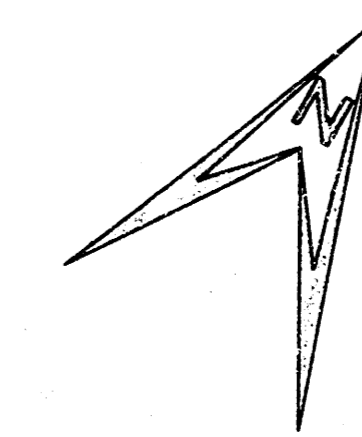


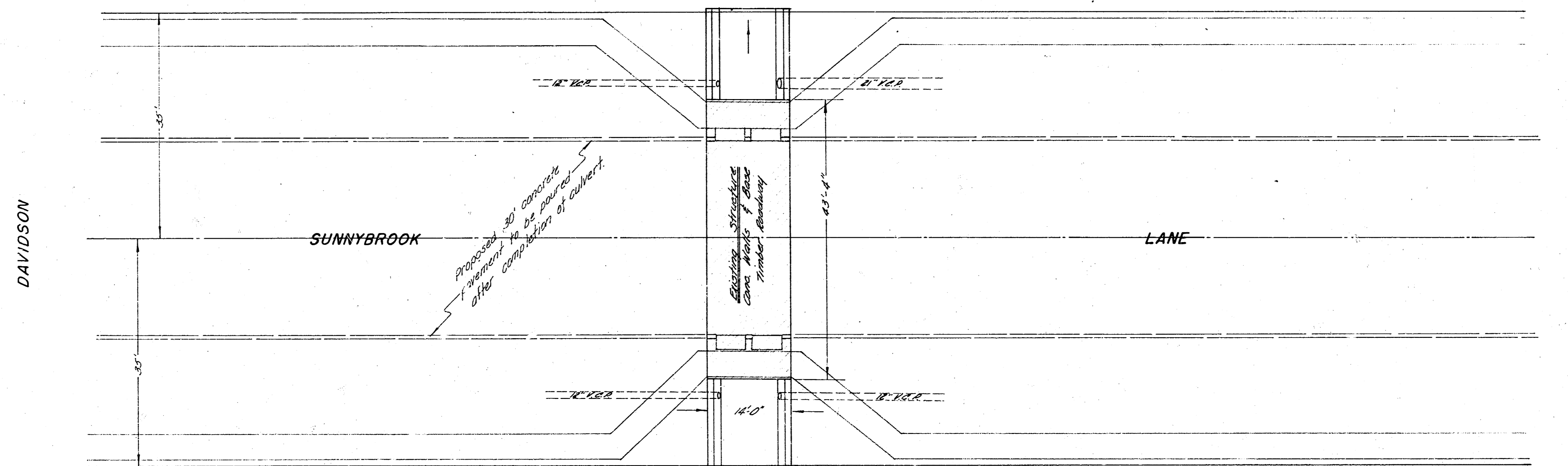
CULVERT IMPROVEMENT SUNNYBROOK LANE

WICHITA KANSAS
C 19 - 223

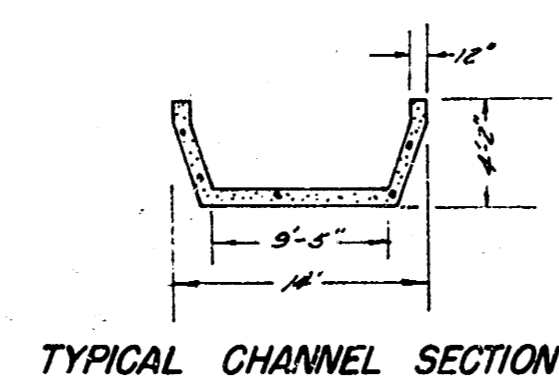


Note to Contractor:
 Plug (3) 12" K.P. at the culvert.
 Do not plug 8" pipe on the N.E.
 corner of existing structure.

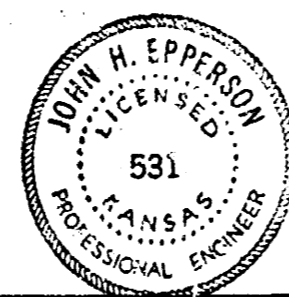
Note to Contractor:
 Remove concrete sidewalk at job
 site where necessary. Bid price to be
 included in structure removal item.
 New sidewalk outside of the 14' culvert
 to be const. by others.



B.M. 120.61 S.S.W. Flange Bolt on Fire Hydrant, N.E. cor. Davidson of Sunnybrook.
 B.M. 119.50 S.S.W. Flange Bolt on Fire Hydrant, N.E. cor. Roosevelt of Sunnybrook.



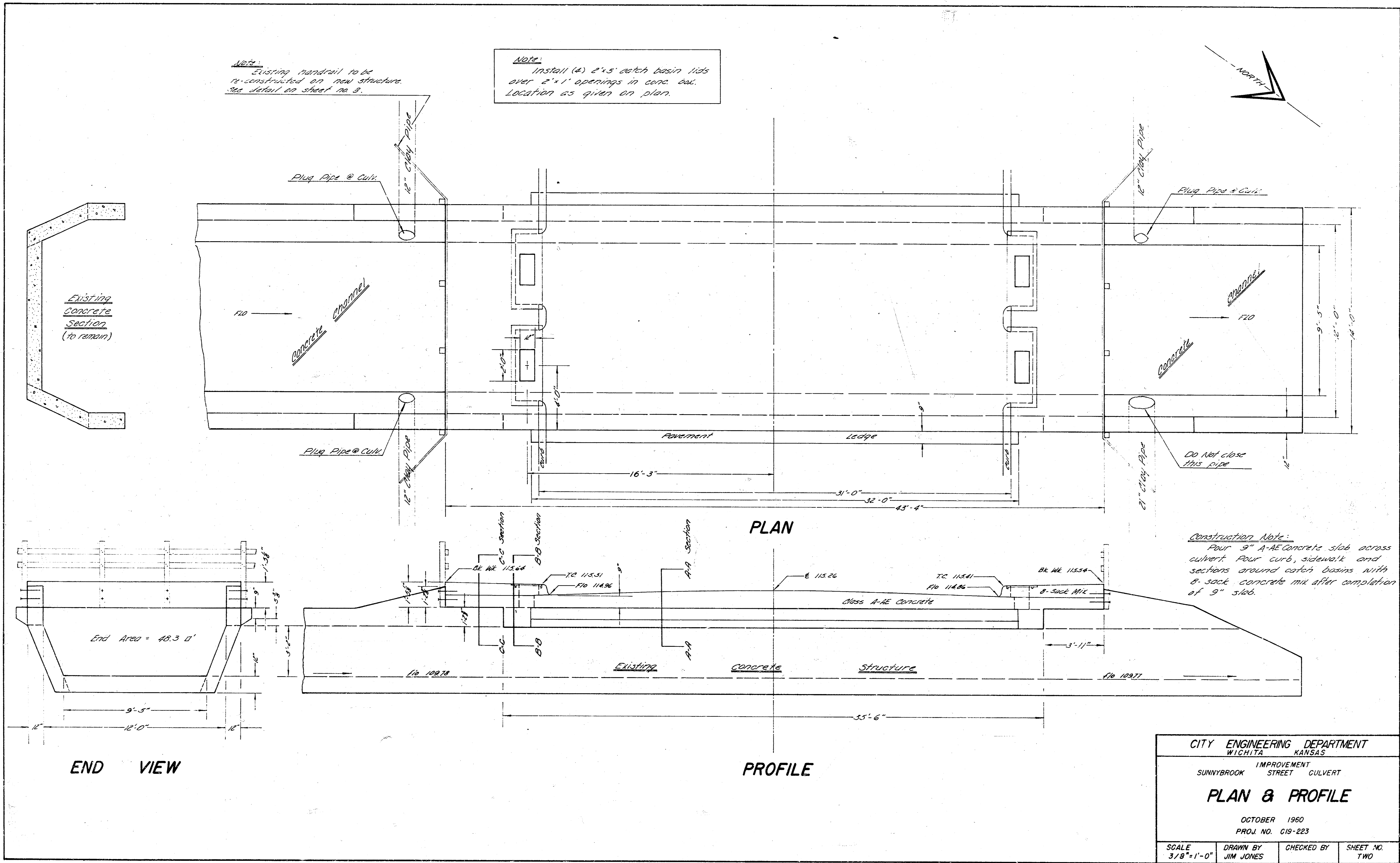
TYPICAL CHANNEL SECTION



Note to Contractor:
 This existing culvert has a roadway
 surface consisting of 5"x12"x36" timbers supported
 by (36) 4"x13"x14" timber stringers parallel to
 the street. An asphalt seal course approx. 3"
 thick provides the driving surface. Wooden
 sidewalks are supported on each end of culvert
 by (4) 4"x8"x14" timber stringers.
 Walls, base slabs of paved channels are
 12" concrete. All existing concrete to remain.
 The contractor shall remove the existing
 timber roadway & salvage all reusable material
 and store at the site as directed by the
 city supt. of street maintenance; all other
 material shall be removed from the site and
 disposed of.
 The existing wooden handrails shall be salvaged
 and used on the new structure. See sheet #3.

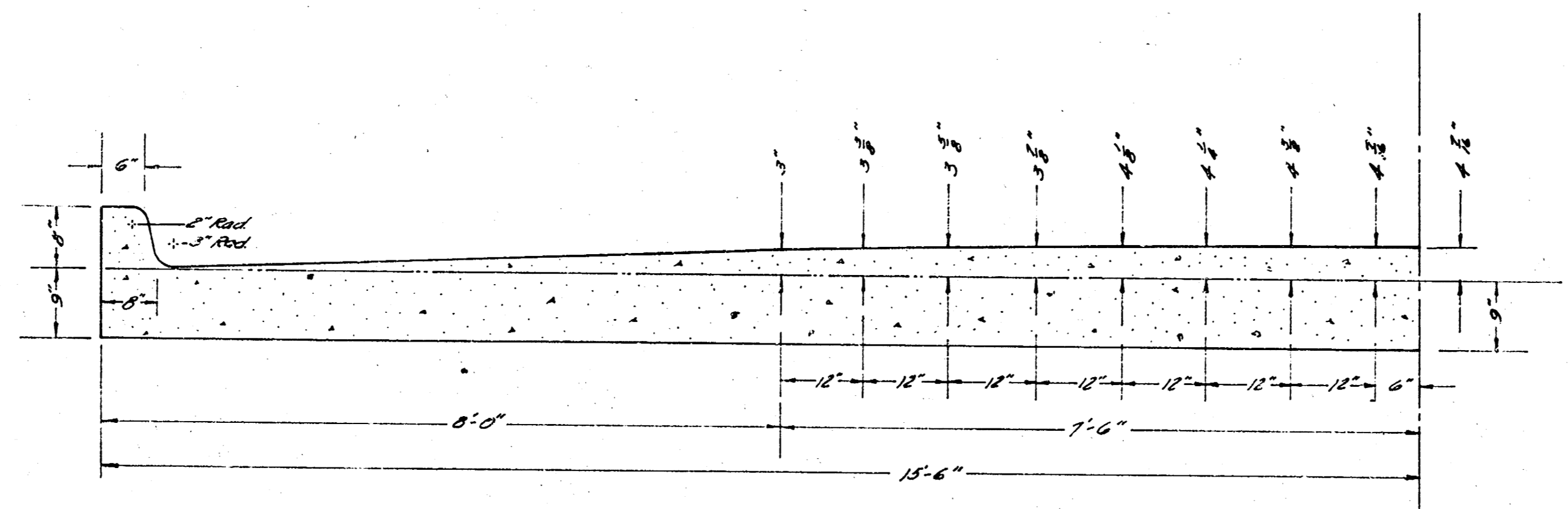
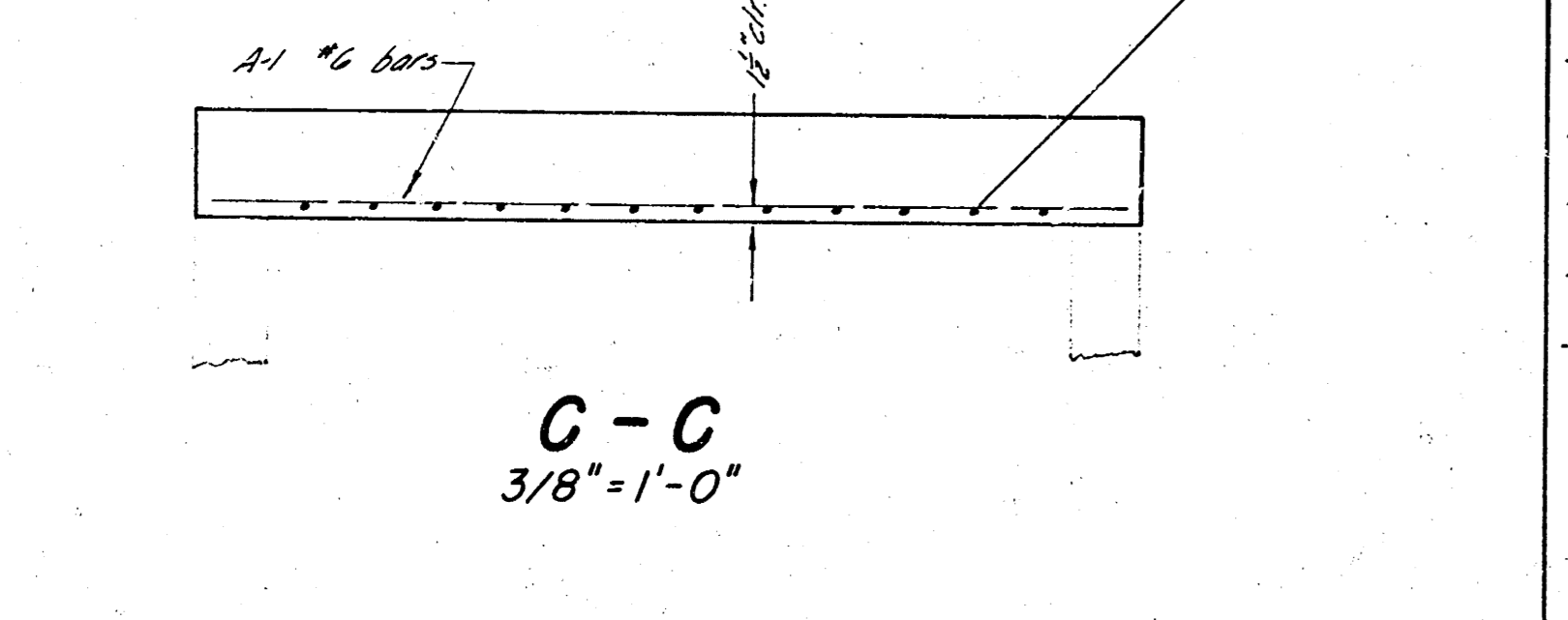
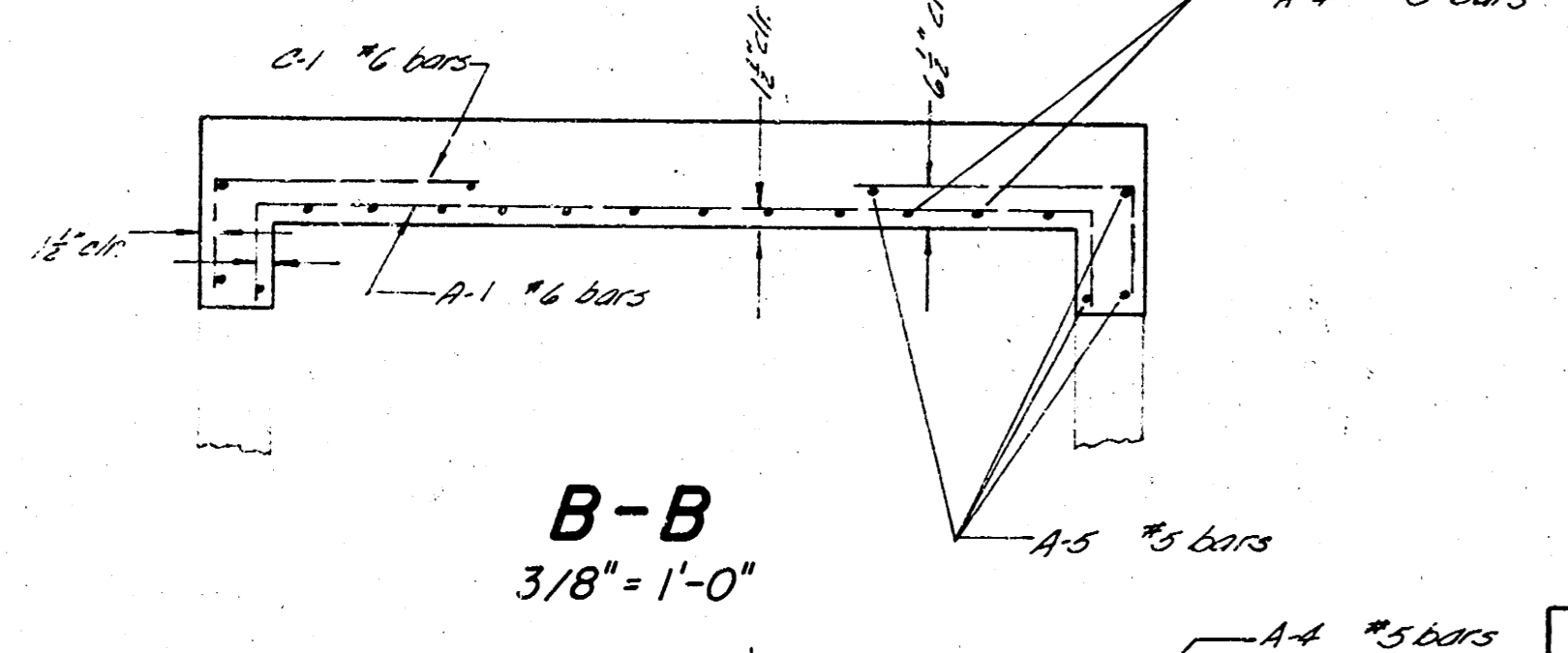
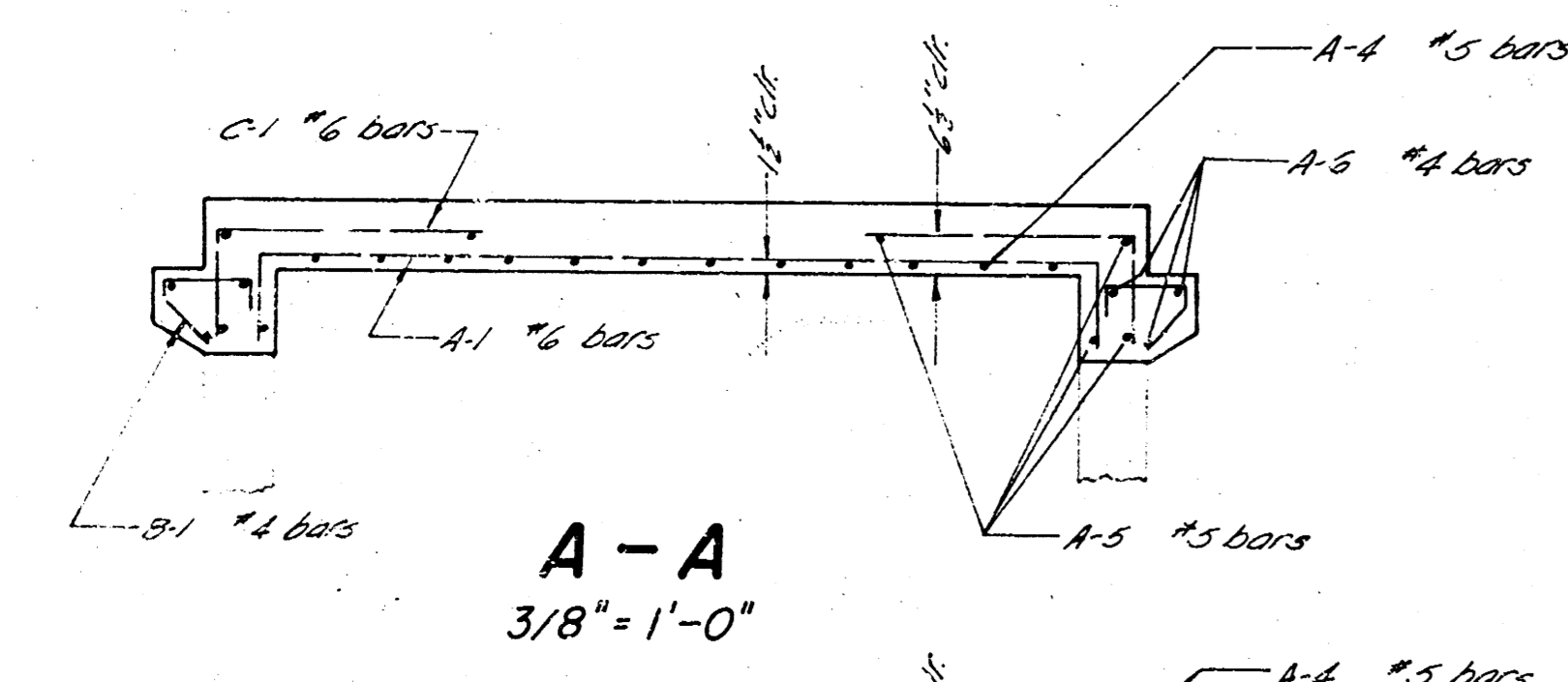
BILL OF MATERIAL		
Item	Quantity	Unit
Class A-AE Concrete	1,512	Cu Yd
8-Back Concrete	3.5	Cu Yd
Reinforcing Steel	3,220	Lbs
Catch Basin Lids	4	Each
Hand Excavation	17	Cu Yd
Timber Structure Rem.	1	Each

CITY ENGINEERING DEPARTMENT WICHITA KANSAS			
SUNNYBROOK IMPROVEMENT STREET STREET CULVERT			
LOCATION			
OCTOBER 1960 PROJ. NO. C19-223			
SCALE 1" = 10'	DRAWN BY JIM JONES	CHECKED BY	SHEET NO. ONE

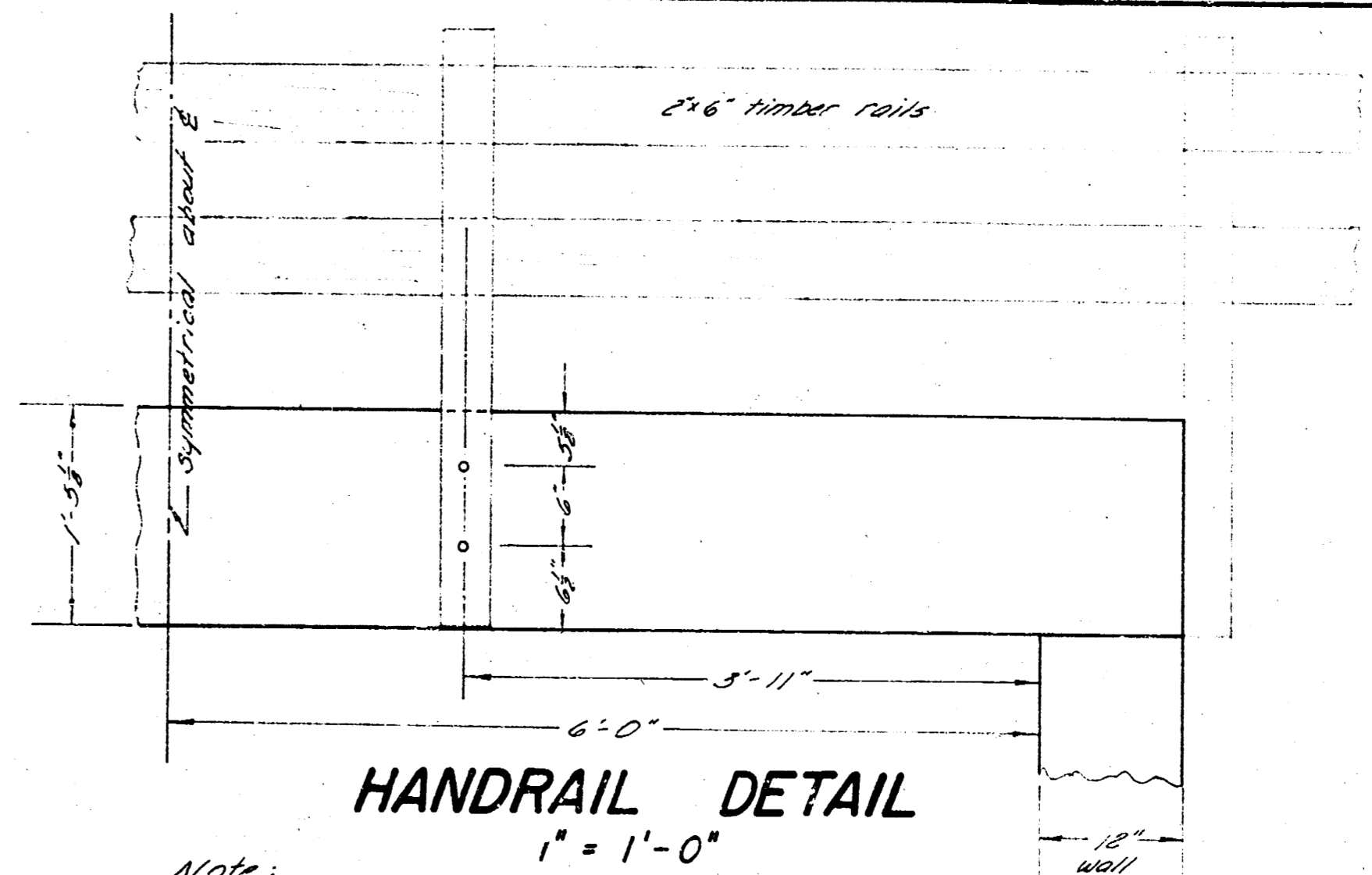


CITY ENGINEERING DEPARTMENT WICHITA, KANSAS			
IMPROVEMENT SUNNYBROOK STREET CULVERT			
PLAN & PROFILE			
OCTOBER 1960 PROJ. NO. C19-223			
SCALE 3/8" = 1'-0"	DRAWN BY JIM JONES	CHECKED BY	SHEET NO. TWO

All reinf steel to be 1/2" clear of exposed face

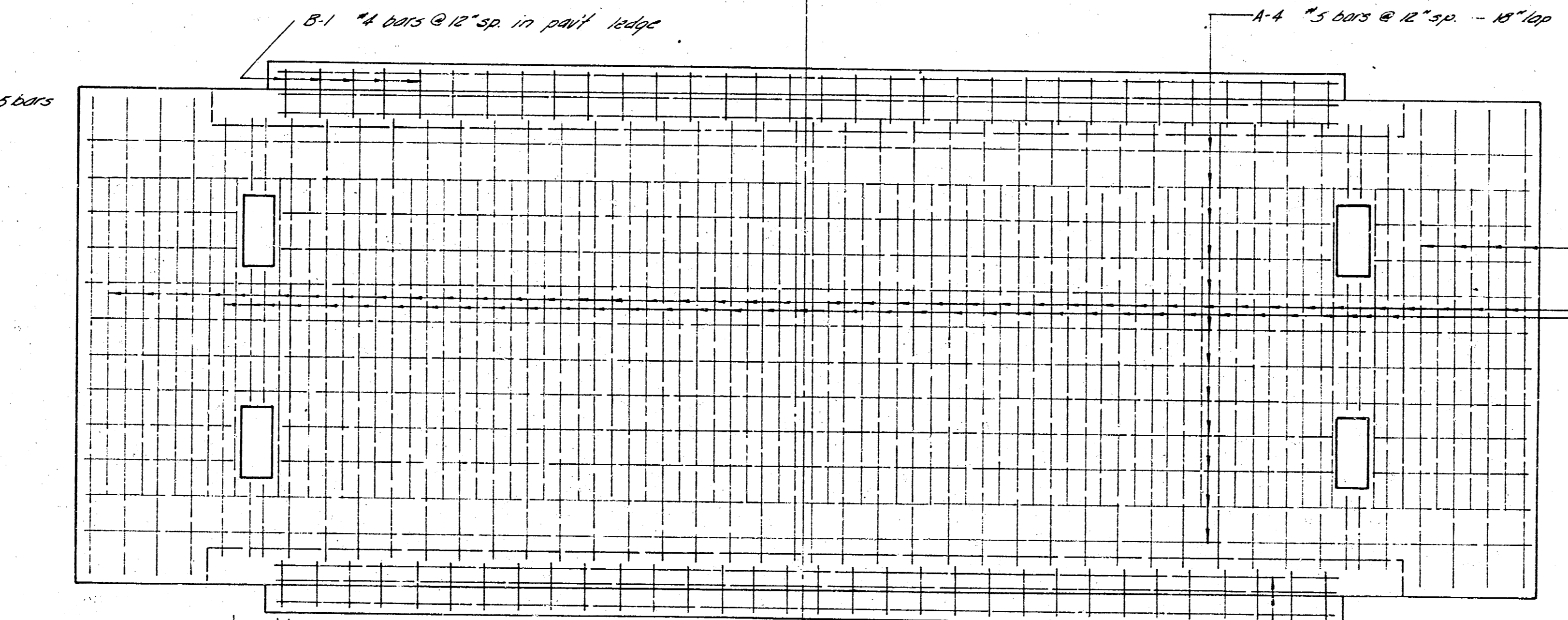


CROWN PROFILE
3/4" = 1'-0"



HANDRAIL DETAIL
1" = 1'-0"

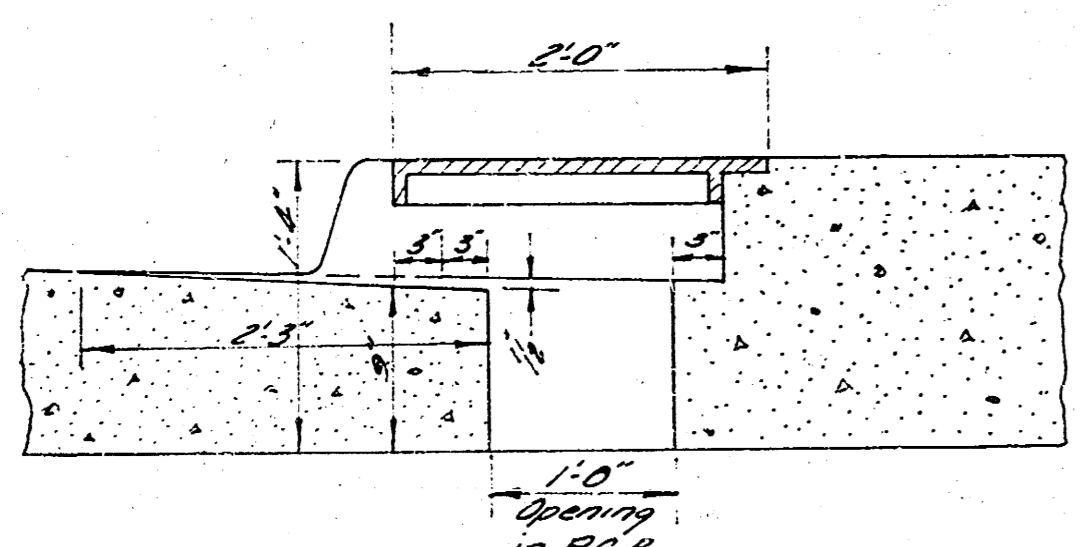
Note: Wooden handrails to be salvaged from old structure & re-constructed on new slab. Reverse existing 1/2" x 1 1/2" bolts & embed in concrete as shown in detail. The city field engr may authorize changes in procedure if necessary.



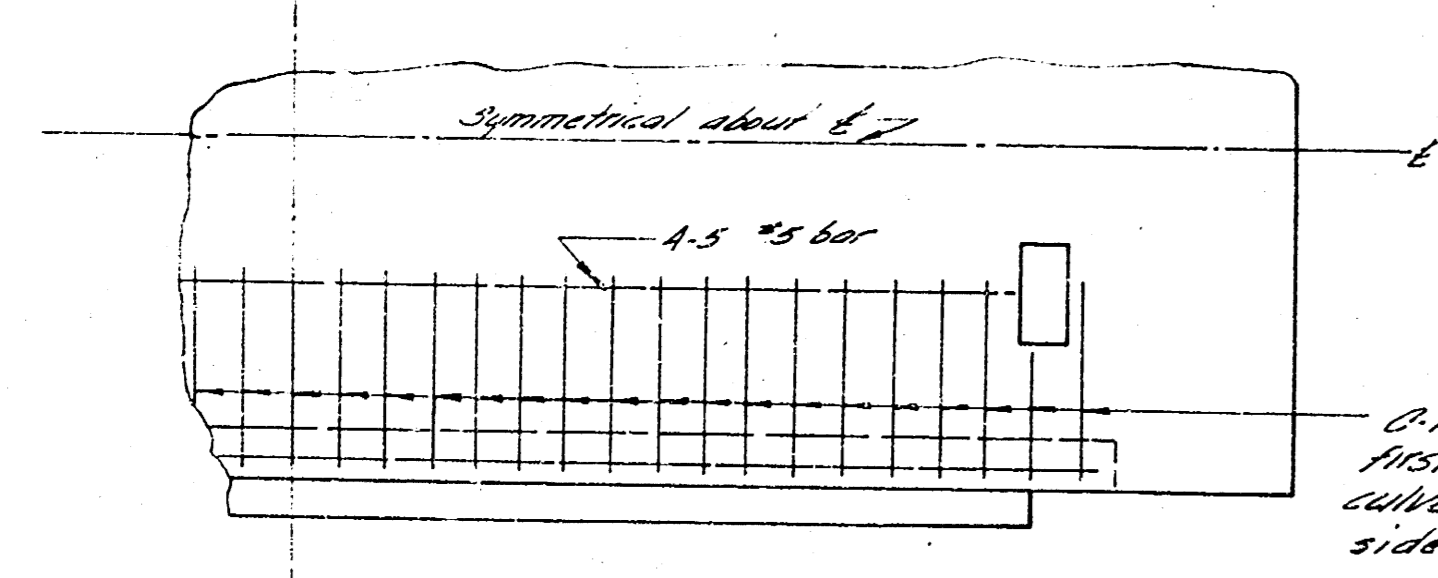
POSITIVE MOMENT STEEL IN SLAB
3/8" = 1'-0"

BAR SCHEDULE						
BAR	SIZE	LENGTH	SPAC.	NO.	SHAPE	WT.
A-1	#6	14'-9"	12"	38	□	946
A-2	#6	9'-0"	12"	42	□	568
A-3	#4	15'-6"	12"	8	□	162
A-4	#5	15'-8"	12"	36	□	576
A-5	#5	18'-3"	12"	16	□	324
A-6	#4	16'-8"	12"	12	□	181
B-1	#4	3'-0"	12"	64	□	128
C-1	#6	3'-6"	12"	70	□	578

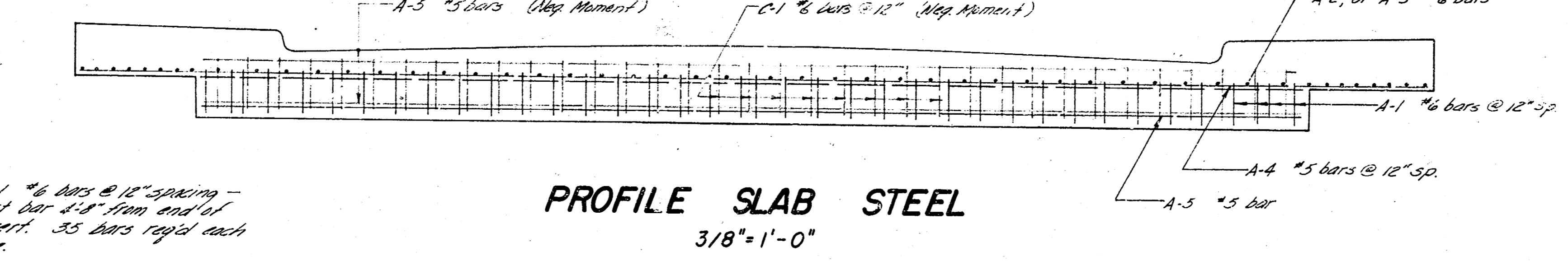
min lap for A-4 bars = 18"
min lap for A-5 bars = 15"
min lap for A-6 bars = 12"



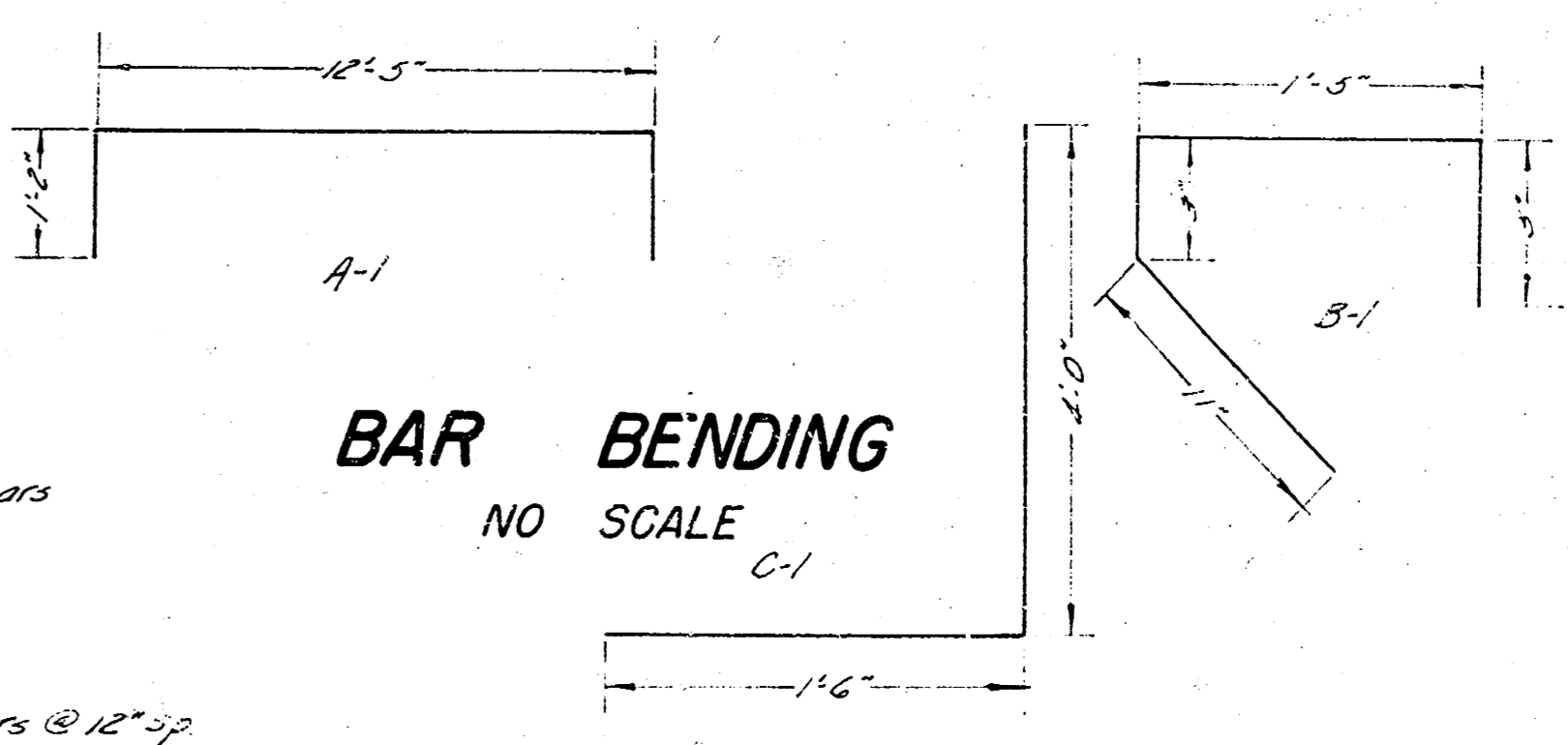
CATCH BASIN DETAIL
1" = 1'-0"



NEGATIVE MOMENT STEEL
1/4" = 1'-0"



PROFILE SLAB STEEL
3/8" = 1'-0"



BAR BENDING
NO SCALE

CITY ENGINEERING DEPARTMENT
WICHITA, KANSAS

SUNNYBROOK STREET CULVERT
IMPROVEMENT

STEEL DETAILS

OCTOBER 1960
PROJ. NO. C19-223

SCALE AS NOTED	DRAWN BY JIM JONES	CHECKED BY	SHEET NO. THREE
----------------	--------------------	------------	-----------------