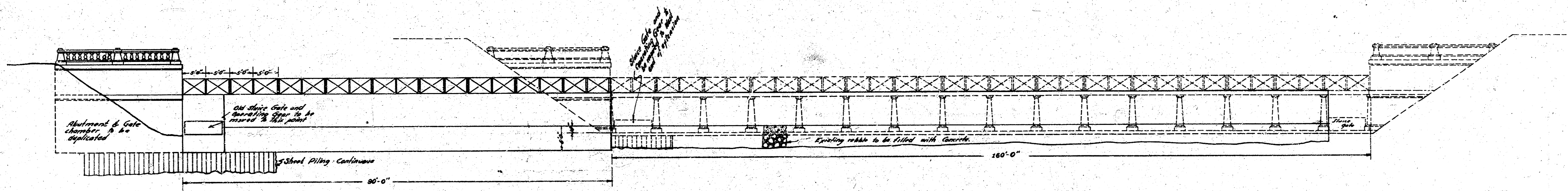


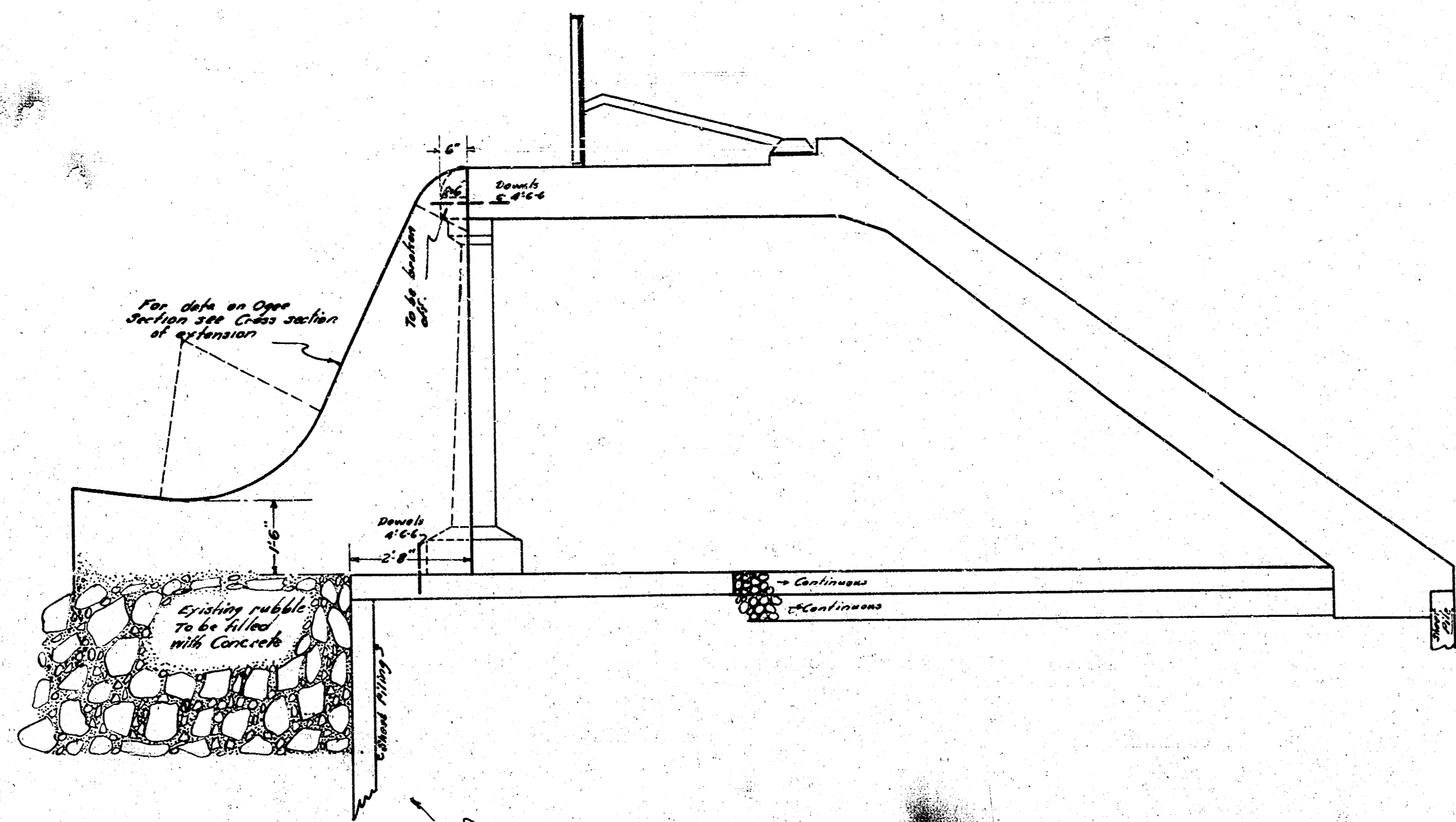
PLAN of CENTRAL AVE DAM  
SHOWING PROPOSED EXTENSION  
FOR RIVER PROTECTION



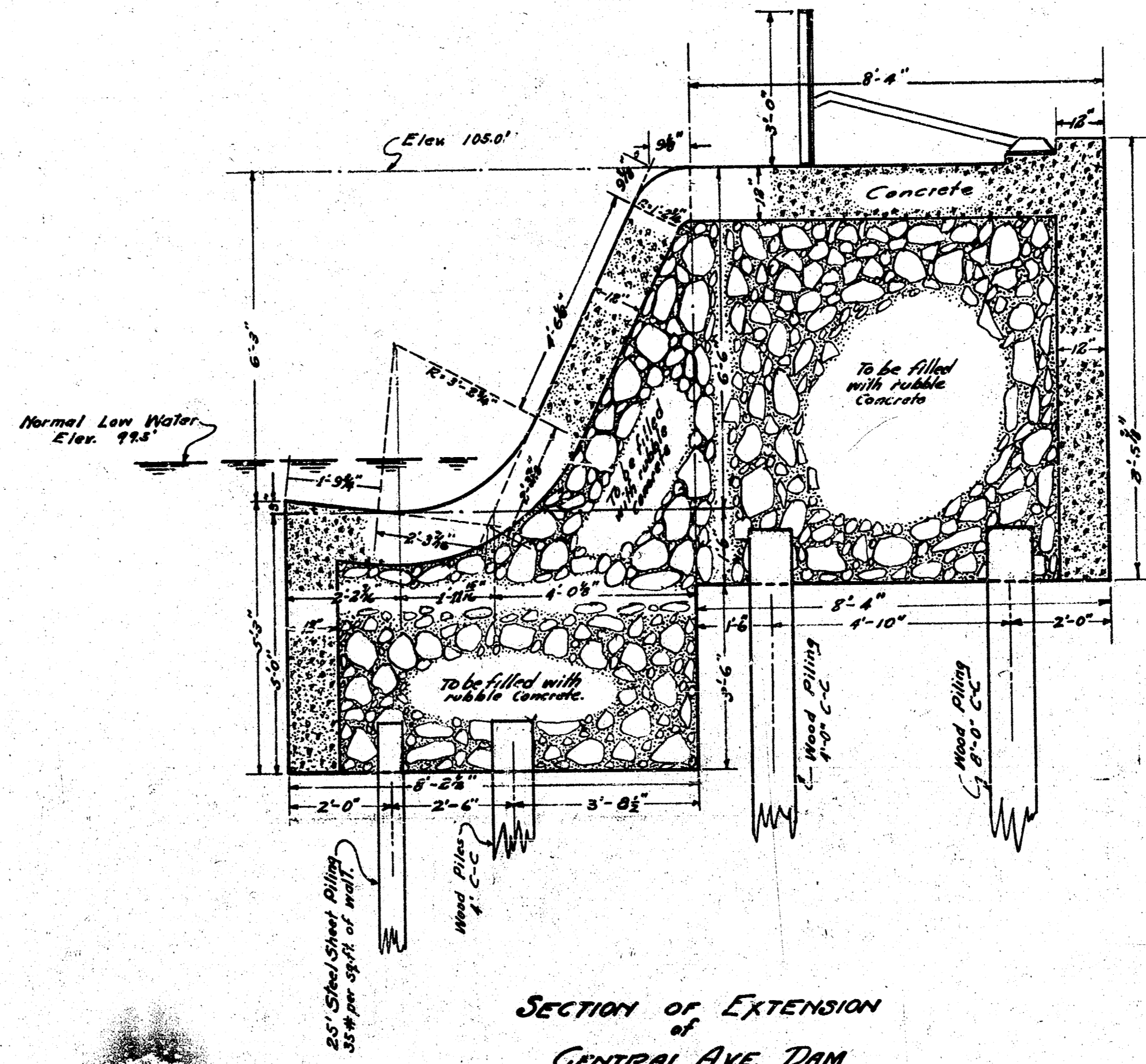
ELEVATION of CENTRAL AVE DAM  
SHOWING PROPOSED EXTENSION  
FOR RIVER PROTECTION  
Scale 1"=10'

PLAN AND ELEVATION OF  
CENTRAL AVE DAM, SHOWING  
EXTENSION FOR RIVER PROTECTION  
WICHITA KANSAS  
DESIGNED BY P. BROCKWAY  
DRAWN BY H. R. MULICK & H. A. SMART  
SEPTEMBER 1924.  
IN 4 SHEETS SHEET 1.

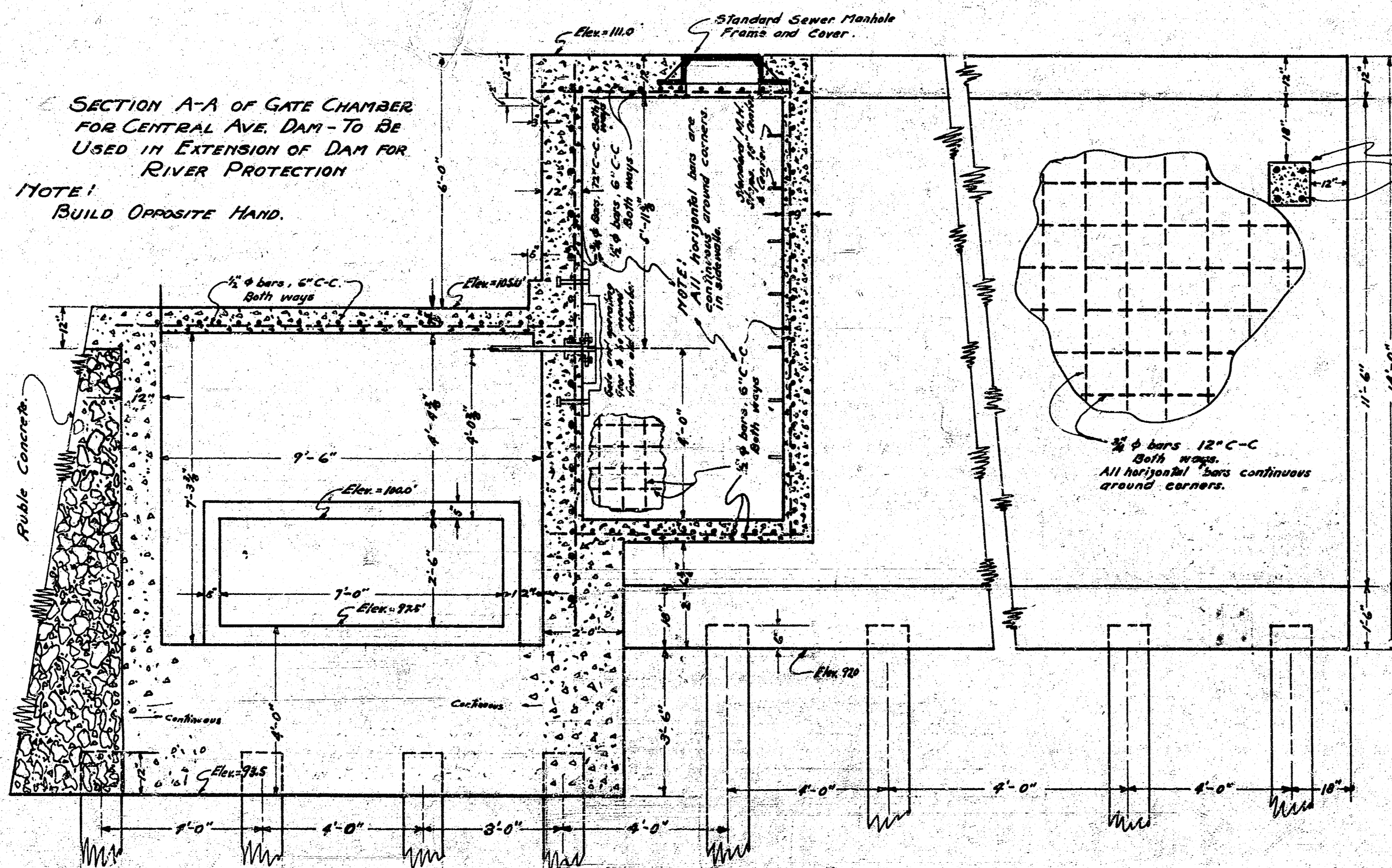
Central Ave  
&  
L. Ark. River  
Dam 4



SECTION OF CENTRAL AVE. DAM  
SHOWING PROPOSED ORGE SECTION

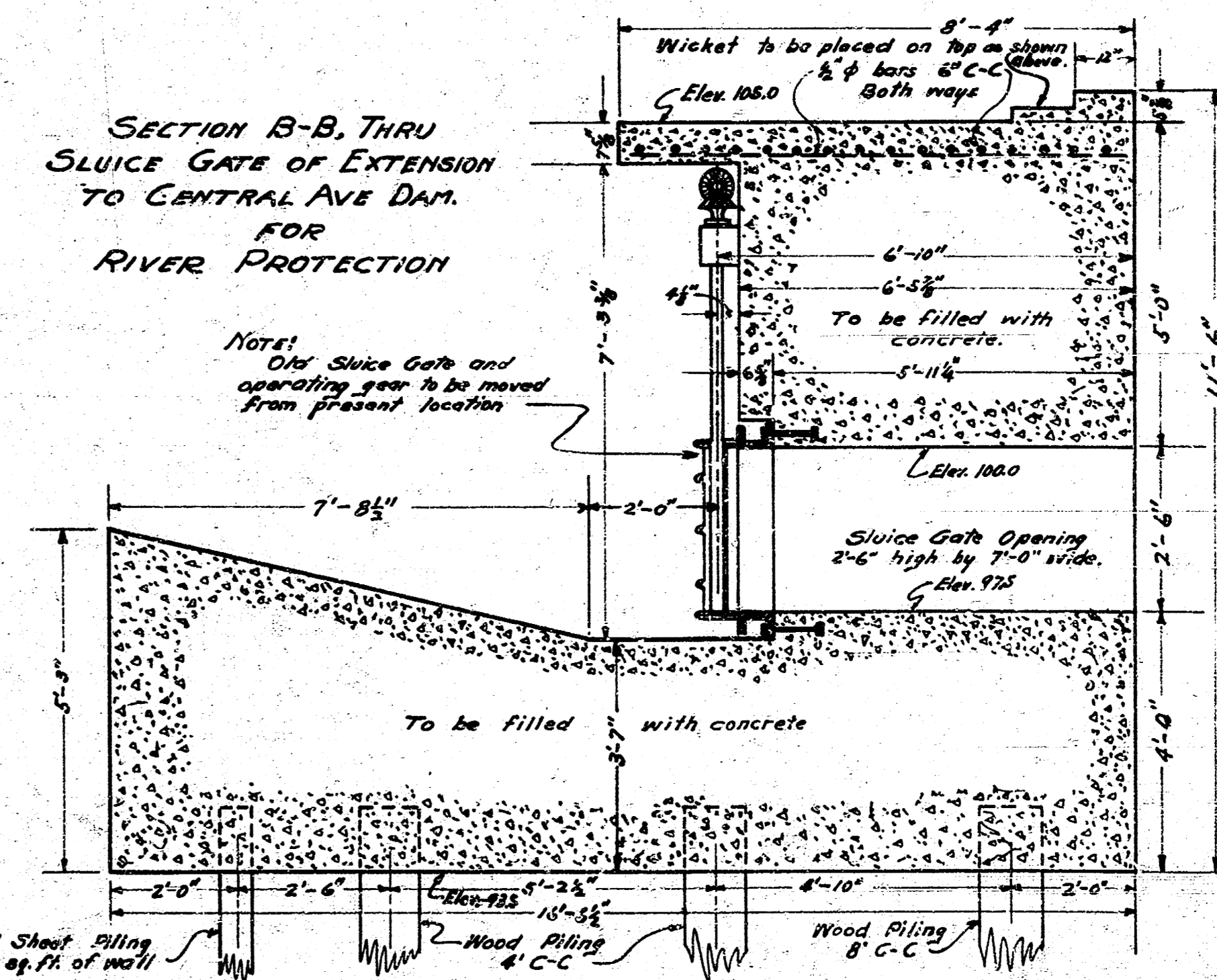


SECTION OF EXTENSION OF  
CENTRAL AVE. DAM  
FOR RIVER PROTECTION



SECTION A-A OF GATE CHAMBER  
FOR CENTRAL AVE. DAM - TO BE  
USED IN EXTENSION OF DAM FOR  
RIVER PROTECTION

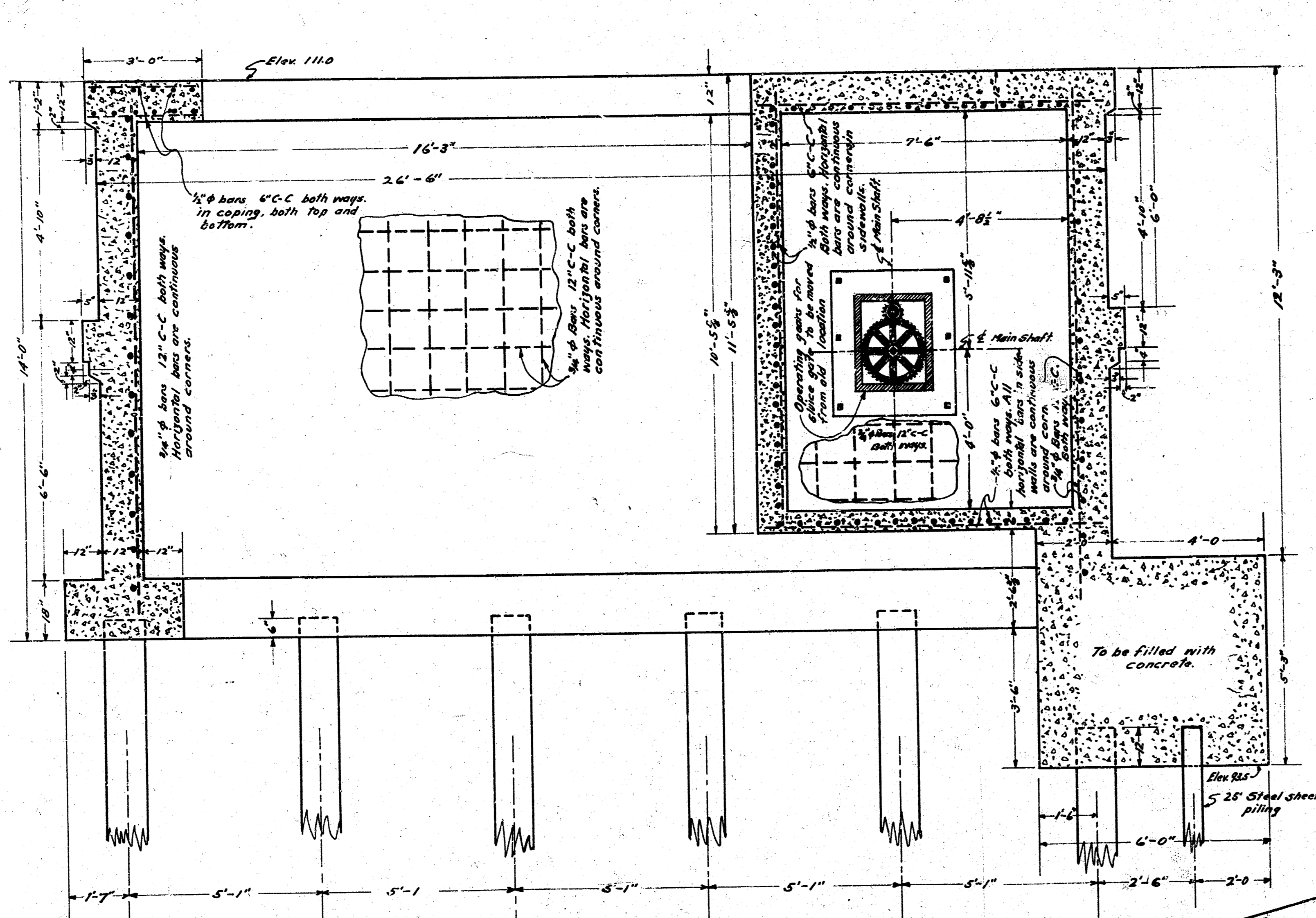
NOTE!  
BUILD OPPOSITE HAND.



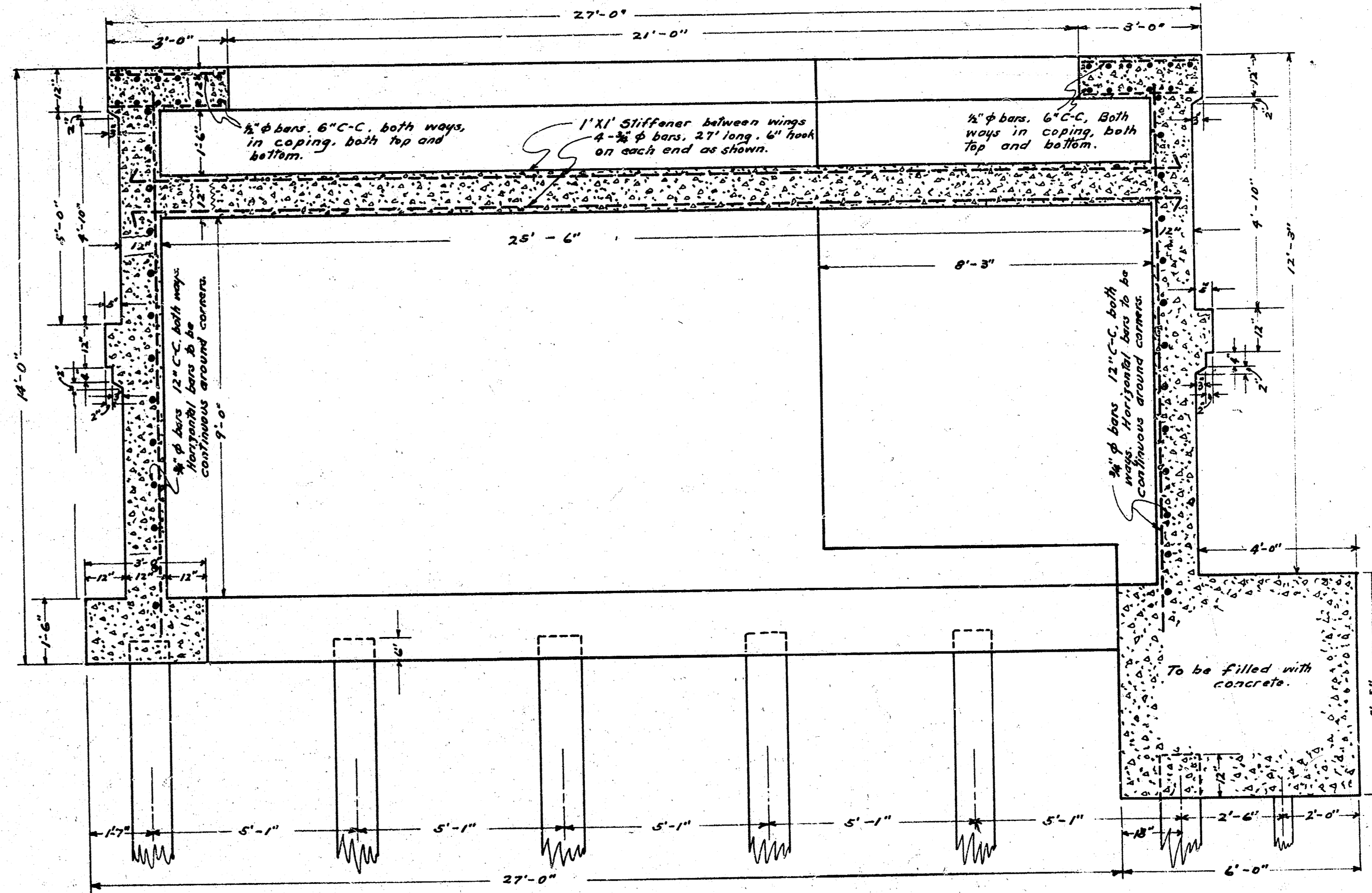
SECTION B-B, THRU  
SLUICE GATE OF EXTENSION  
TO CENTRAL AVE. DAM  
FOR RIVER PROTECTION

NOTE!  
Old Sluice Gate and  
operating gear to be moved  
from present location

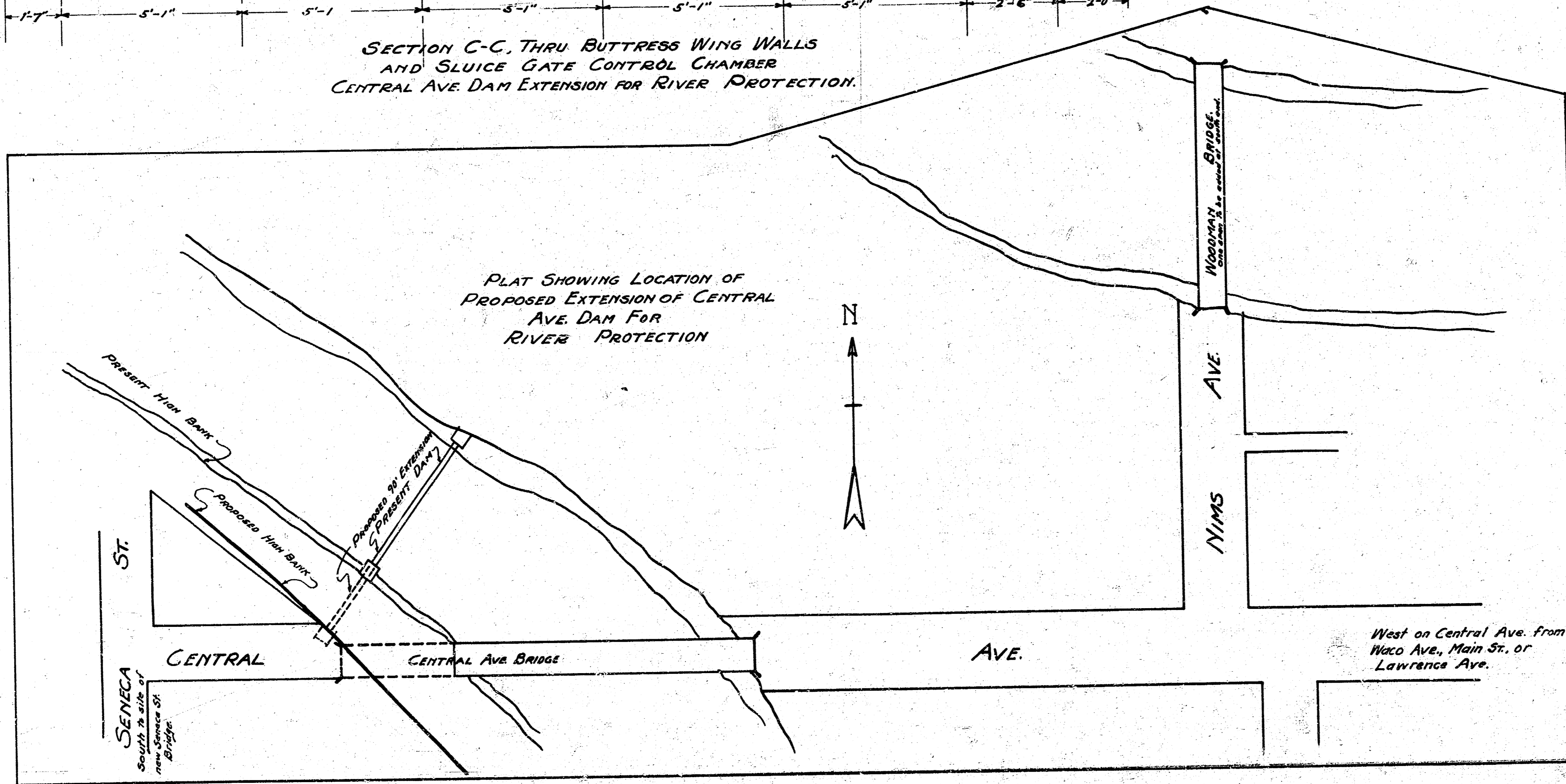
DETAILED SECTIONS OF EXTENSION  
OF  
CENTRAL AVE. DAM  
FOR  
RIVER PROTECTION  
WICHITA KANSAS  
DESIGNED BY P.L. BROCKWAY  
DRAWN BY H.P. MURKIN & H.A. SMART  
SEPTEMBER 1924.  
IN 4 SHEETS SHEET 2.  
Scale 1/2"=1'-0"



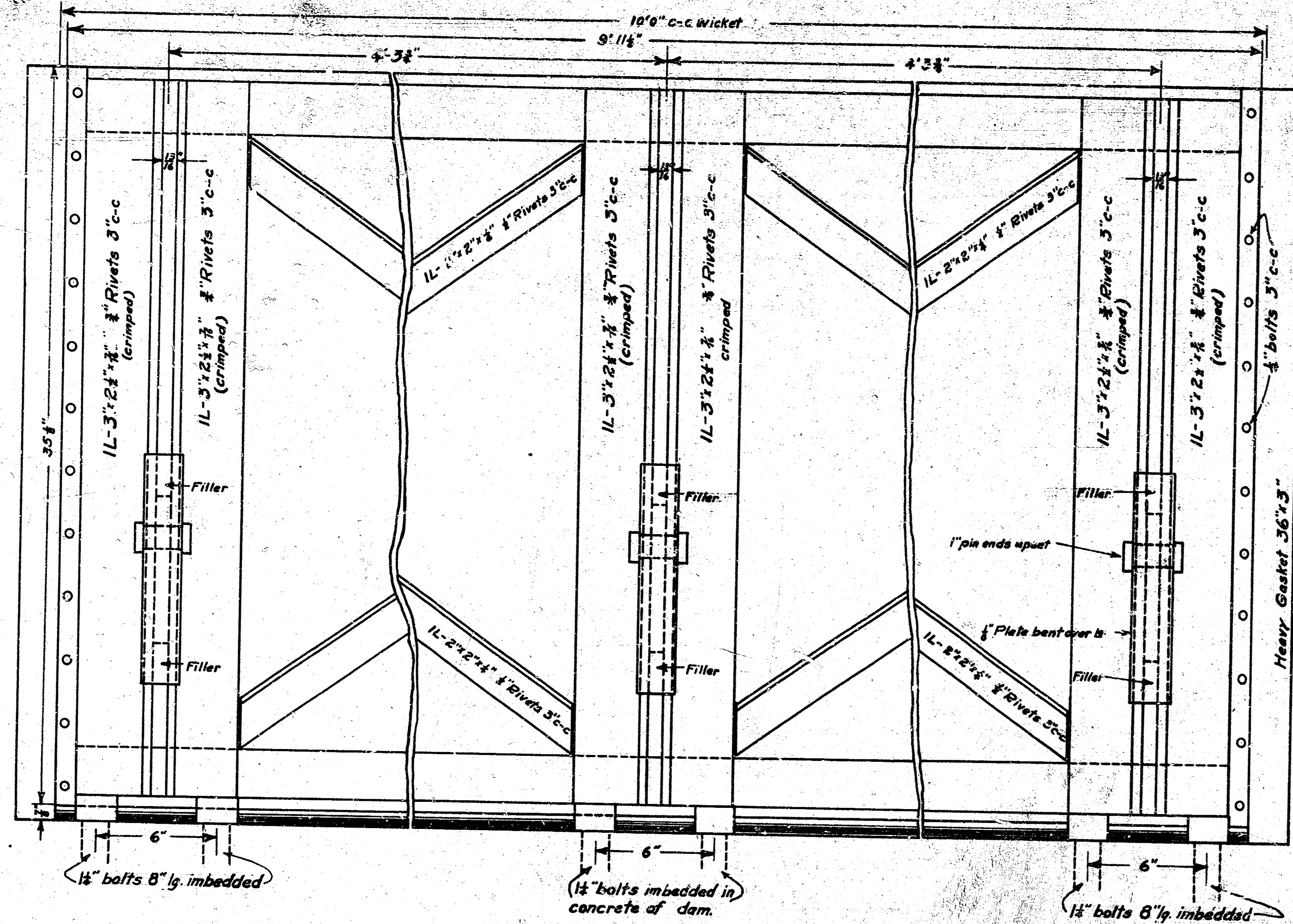
SECTION C-C THRU BUTTRESS WING WALLS AND SLUICE GATE CONTROL CHAMBER  
CENTRAL AVE DAM EXTENSION FOR RIVER PROTECTION.



SECTION D-D THRU BUTTRESS WING WALLS  
EXTENSION OF CENTRAL AVE DAM  
FOR RIVER PROTECTION.

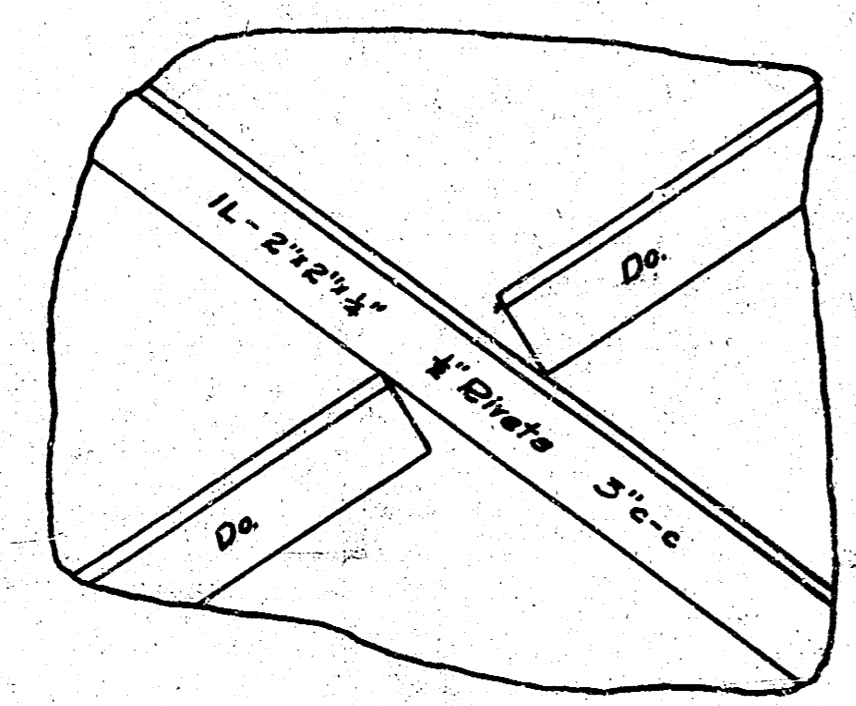


SECTIONS THRU BUTTRESS OF  
EXTENSION OF CENTRAL AVE DAM,  
FOR RIVER PROTECTION  
ALSO PLAT SHOWING LOCATION  
WICHITA KANSAS  
DESIGNED BY R.L. BROCKWAY  
DRAWN BY H.R. MUSICK  
SEPTEMBER 1924.  
IN 4 SHEETS. SHEET 3.  
Scale 1/2" = 1'-0"

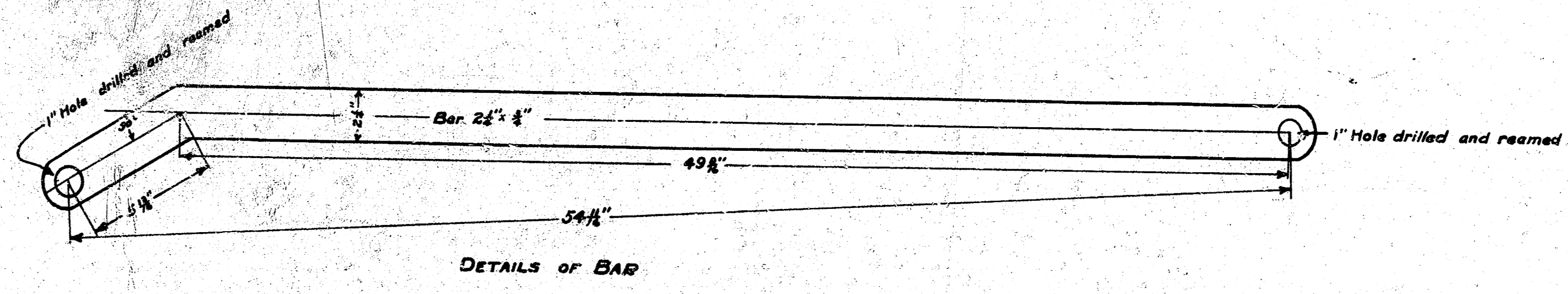


Notes: Wickets will be placed 10'-0" apart on centers. The heavy gasket shown will be provided on each second wicket to form a water-tight joint of the 1/4" between the edges of two adjoining wickets. Vertical angles are to be crimped over the horizontal angles and given an even trim.

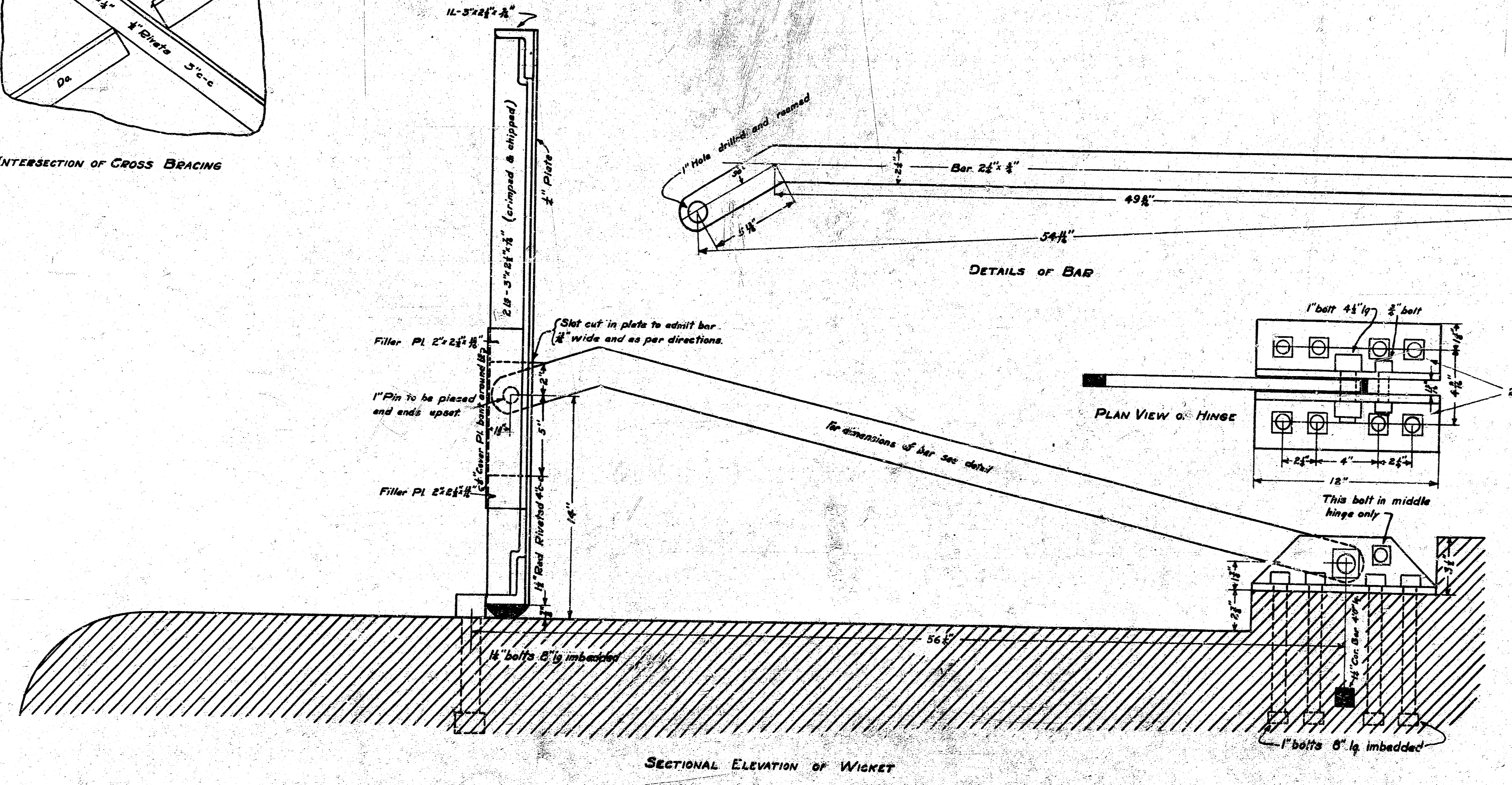
DOWN STREAM ELEVATION OF WICKET



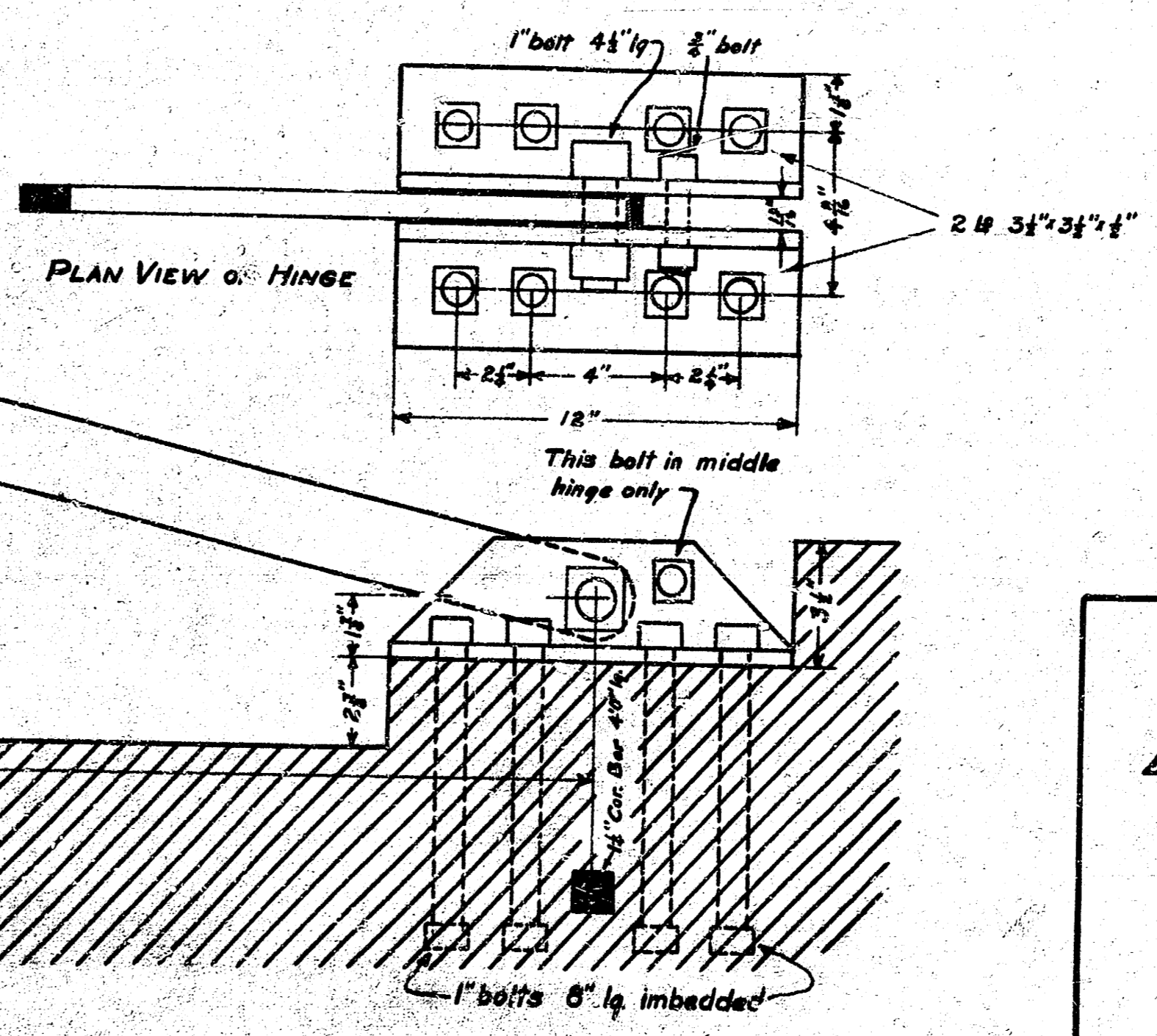
INTERSECTION OF CROSS BRACING



DETAILS OF BAR



SECTIONAL ELEVATION OF WICKET



PLAN VIEW OF HINGE

DETAILS OF WICKETS  
 CENTRAL AVE DAM,  
 EXTENSION FOR RIVER PROTECTION,  
 WICHITA KANSAS  
 DESIGNED BY P.L. BROCKWAY  
 DRAWN BY C.E. MURRAY  
 SEPTEMBER 1924.  
 IN 4 SHEETS SHEET 4  
 Scale 3/4" = 1'-0"