

CITY PLANNING COMMISSION

PREPARED BY WORKS PROGRESS ADMINISTRATION

DRAWN BY R.E. FRIZZELLE. CHECKED BY L.K. WHITE

SUPERVISED BY H.S. DENISON

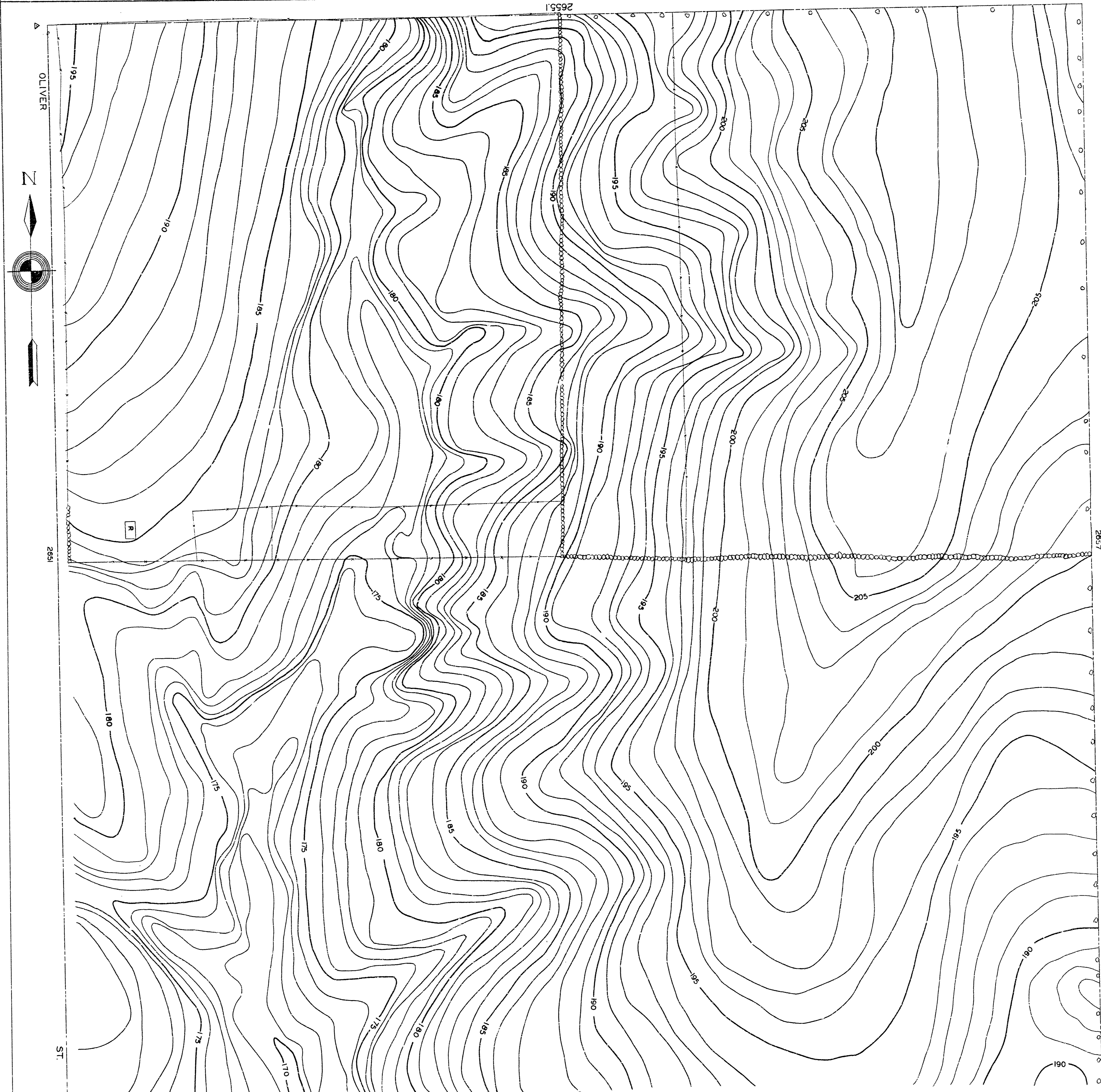
1936 INST. MAN R.D. WILLIAMS SCALE 1"=100 FEET

SW 1/4 SEC. 13 T. 27 R. 1E.

B.M.#3
X ON SOUTH CURB OF MURDOCK AND OLIVER. ELEV. 182.1

B.M.#4
X ON WEST END OF COPING OF CULVERT AT OLIVER AND CENTRAL
ELEV. 178.42

B.M.#5
P.L. PIPE ON SW. OF OLIVER AND 9TH ELEV. 196.7



CITY PLANNING COMMISSION

PREPARED BY WORKS PROGRESS ADMINISTRATION

DRAWN BY RE. FRIZZELLE CHECKED BY L.K. WHITE

SUPERVISED BY H.S. DENISON

1936 INST. MAN R.D. WILLIAMS SCALE 1"=100 FEET

SW 1/4 SEC. 13 T. 27 R. 1E.

B.M.#3
X ON SOUTH CURB OF MURDOCK AND OLIVER. ELEV. 182.1
B.M.#4
X ON WEST END OF COPING OF CULVERT AT OLIVER AND CENTRAL
ELEV. 178.42
B.M.#5
P.L. PIPE ON SW. OF OLIVER AND 9TH ELEV. 196.7

