

CITY PLANNING COMMISSION
PREPARED BY WORKS PROGRESS ADMINISTRATION

DRAWN BY RE. FRIZZELLE. CHECKED BY L.K. WHITE.

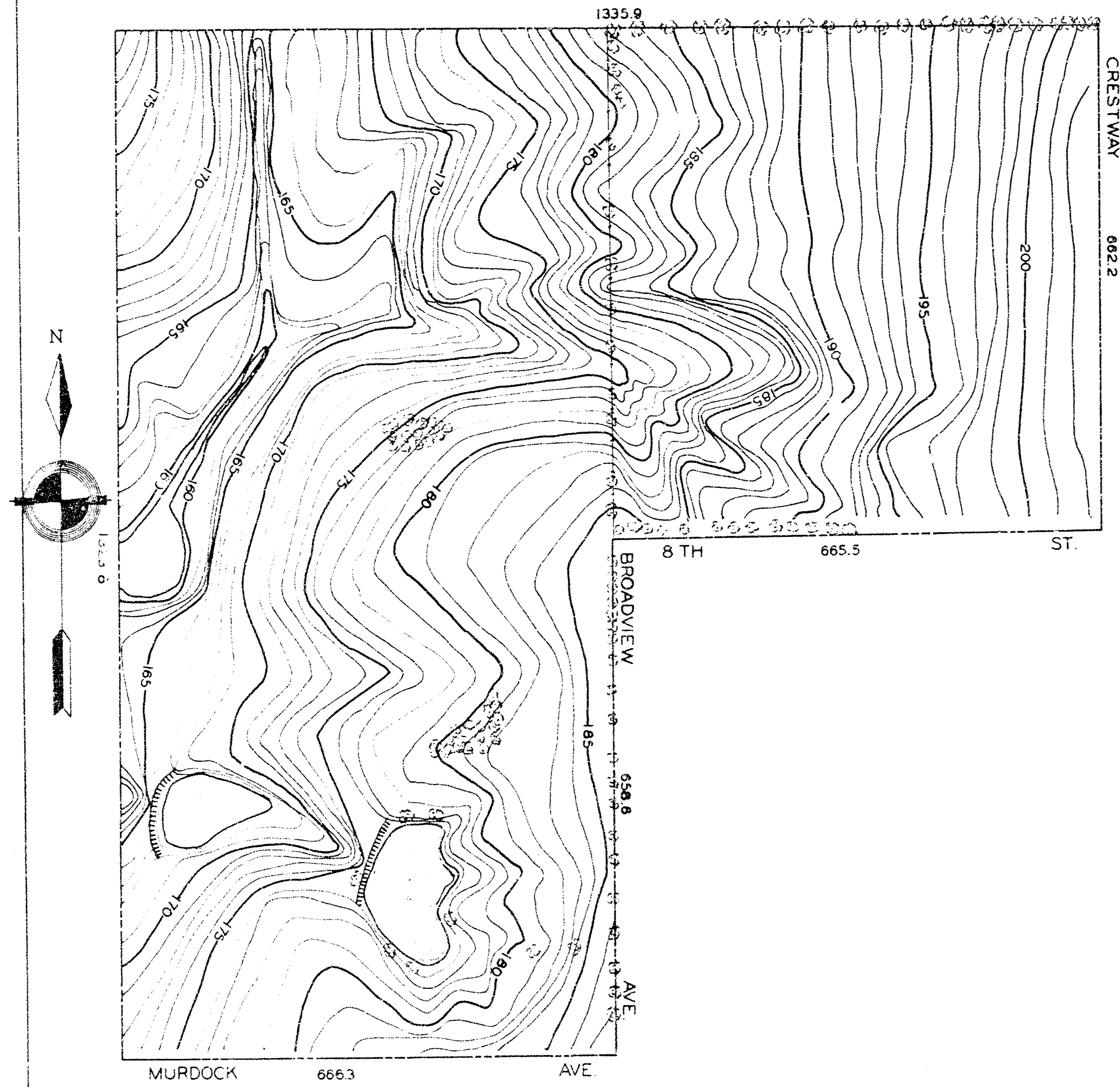
SUPERVISED BY H.S. DENISON.

1936 INST. MAN L. HANDLEY. SCALE 1"=100 FEET.

S.E. 1/4 SEC. 14 T. 27 S. R. 1 E.
City Eng. Dept. File

B.M.#4 IRON PIPE AT E. OF CRESTWAY AND 9TH ELEV. 201.67

B.M.#8 NAIL IN COTTONWOOD TREE NEAR MURDOCK AND
BROADVIEW ELEV. 180.79



CITY PLANNING COMMISSION

PREPARED BY WORKS PROGRESS ADMINISTRATION

DRAWN BY R.F. FRIZZELLE. CHECKED BY L.K. WHITE.

SUPERVISED BY H.S. DENISON.

1936 INST. MAN. L. HANDLEY. SCALE 1"=100 FEET.

SE. 1/4 SEC. 14 T. 27 S. R. 1 E.
City Eng. Dept. File

B.M.#4 IRON PIPE AT E. OF CRESTWAY AND 9TH. ELEV. 201.67

B.M.#8 NAIL IN COTTONWOOD TREE NEAR MURDOCK AND BROADVIEW. ELEV. 180.79

