

CITY PLANNING COMMISSION
PREPARED BY WORKS PROGRESS ADMINISTRATION

DRAWN BY R.E.FRIZZELLE. CHECKED BY L.K.WHITE.

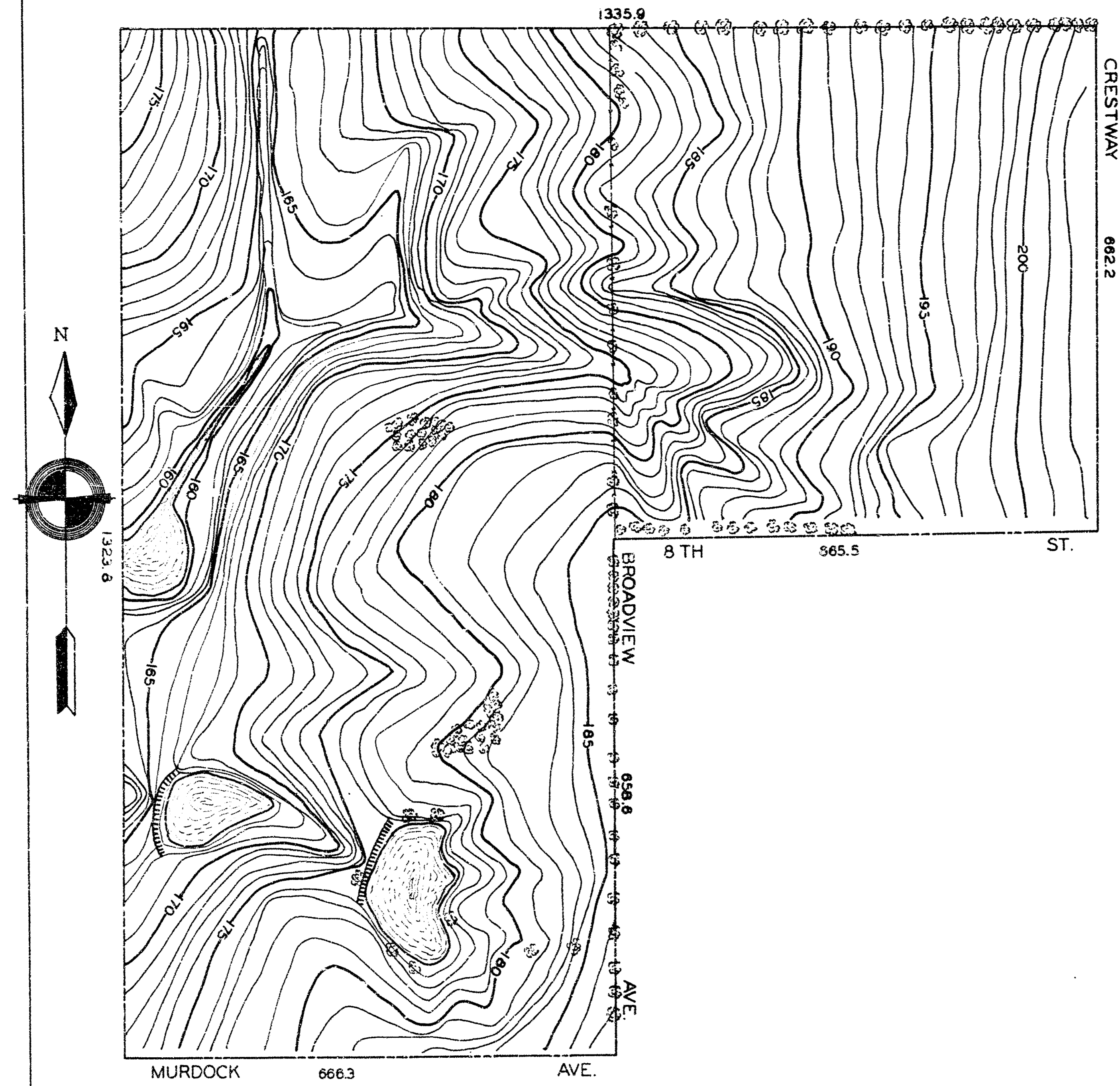
SUPERVISED BY H.S.DENISON.

1936 INST. MAN L. HANDLEY. SCALE 1"=100 FEET.

S.E. ¼ SEC. 14 T. 27 S. R. 1 E.

B.M.#4 IRON PIPE AT E. OF CRESTWAY AND 9TH ELEV. 201.67

B.M.#8 NAIL IN COTTONWOOD TREE NEAR MURDOCK AND
BROADVIEW ELEV. 180.79



CITY PLANNING COMMISSION
PREPARED BY WORKS PROGRESS ADMINISTRATION

DRAWN BY R.E. FRIZZELLE. CHECKED BY L.K. WHITE.

SUPERVISED BY H.S. DENISON.

1936 INST. MAN L. HANDLEY. SCALE 1"=100 FEET.

S.E. 1/4 SEC. 14 T. 27 S. R. 1 E.

B.M.#4 IRON PIPE AT E. OF CRESTWAY AND 9TH ELEV. 201.67

B.M.#8 NAIL IN COTTONWOOD TREE NEAR MURDOCK AND BROADVIEW ELEV. 180.79

