

CITY PLANNING COMMISSION
PREPARED BY WORKS PROGRESS ADMINISTRATION

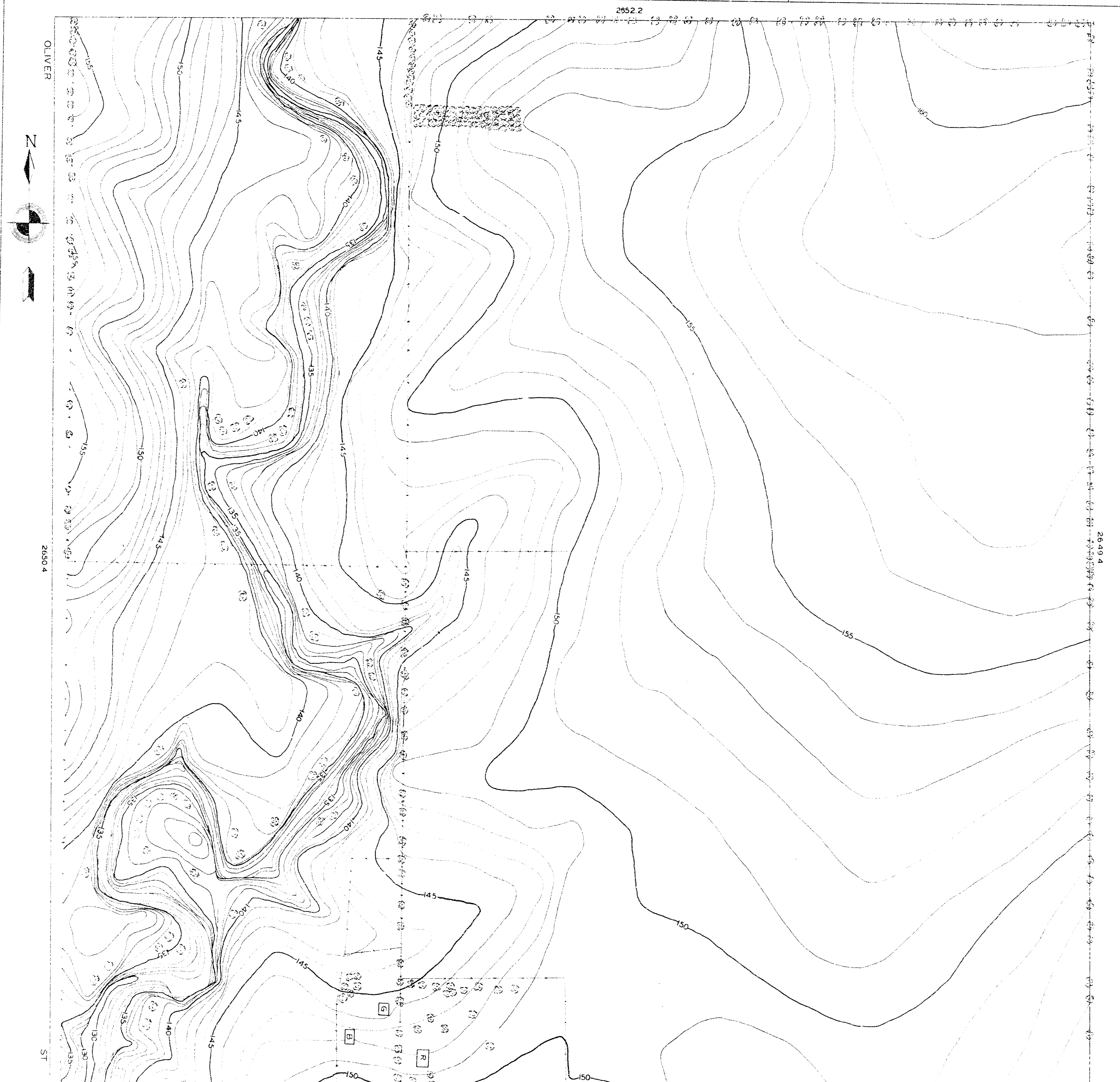
DRAWN BY R.E. FRIZZELLE. CHECKED BY L.K. WHITE.

SUPERVISED BY H.S. DENISON.

1937 INST. MAN L. HANDLEY. SCALE 1"=100 FEET.

SW. $\frac{1}{4}$ SEC. 25 T. 27 S. R. 1 E.
City Eng. Dept. File

B.M.#2 CROSS ON THE NORTH WEST CORNER OF THE FIRST
ROAD CULVERT EAST OF OLIVER ON HARRY ELEV 137.5



CITY PLANNING COMMISSION
PREPARED BY WORKS PROGRESS ADMINISTRATION

DRAWN BY R.E. FRIZZELLE. CHECKED BY L.K. WHITE.

SUPERVISED BY H.S. DENISON.

1937 INST. MAN L. HANDLEY. SCALE 1"=100 FEET.

SW $\frac{1}{4}$ SEC. 25 T. 27 S. R. 1 E.
City Eng. Dept. File

B.M.#2 CROSS ON THE NORTH WEST CORNER OF THE FIRST
ROAD CULVERT EAST OF OLIVER ON HARRY ELEV. 1375

