

CITY PLANNING COMMISSION

PREPARED BY WORKS PROGRESS ADMINISTRATION

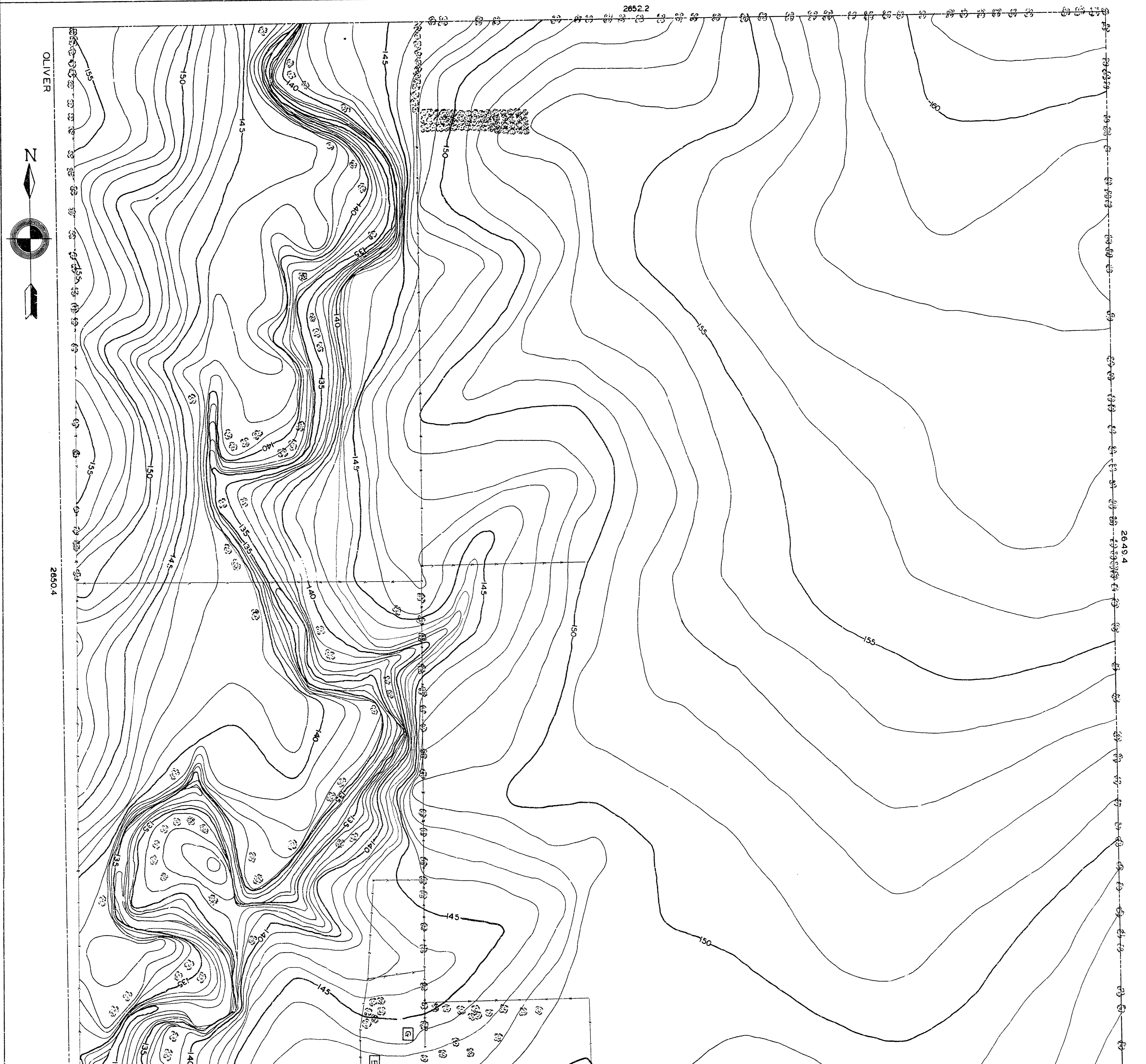
DRAWN BY R.E. FRIZZELLE. CHECKED BY L.K. WHITE.

SUPERVISED BY H.S. DENISON.

1937 INST. MAN L. HANDLEY. SCALE 1"=100 FEET.

S.W. 1/4 SEC. 25 T. 27 S. R. 1 E.

B.M.#2 CROSS ON THE NORTH WEST COPING OF THE FIRST ROAD CULVERT EAST OF OLIVER ON HARRY ELEV 137.5'



CITY PLANNING COMMISSION

PREPARED BY WORKS PROGRESS ADMINISTRATION

DRAWN BY R.E. FRIZZELLE CHECKED BY L.K. WHITE.

SUPERVISED BY H.S. DENISON.

1937 INST. MAN L. HANDLEY. SCALE 1"=100 FEET.

SW. 1/4 SEC. 25 T. 27 S. R. 1 E.

B.M.#2 CROSS ON THE NORTH WEST CORNER OF THE FIRST ROAD CULVERT EAST OF OLIVER ON HARRY ELEV. 1375

