

CITY PLANNING COMMISSION
PREPARED BY WORKS PROGRESS ADMINISTRATION

DRAWN BY R.E. FRIZZELLE. CHECKED BY L.K. WHITE

SUPERVISED BY H.S. DENISON

1936 INST. MAN. RD. WILLIAMS SCALE 1"=100 FEET.

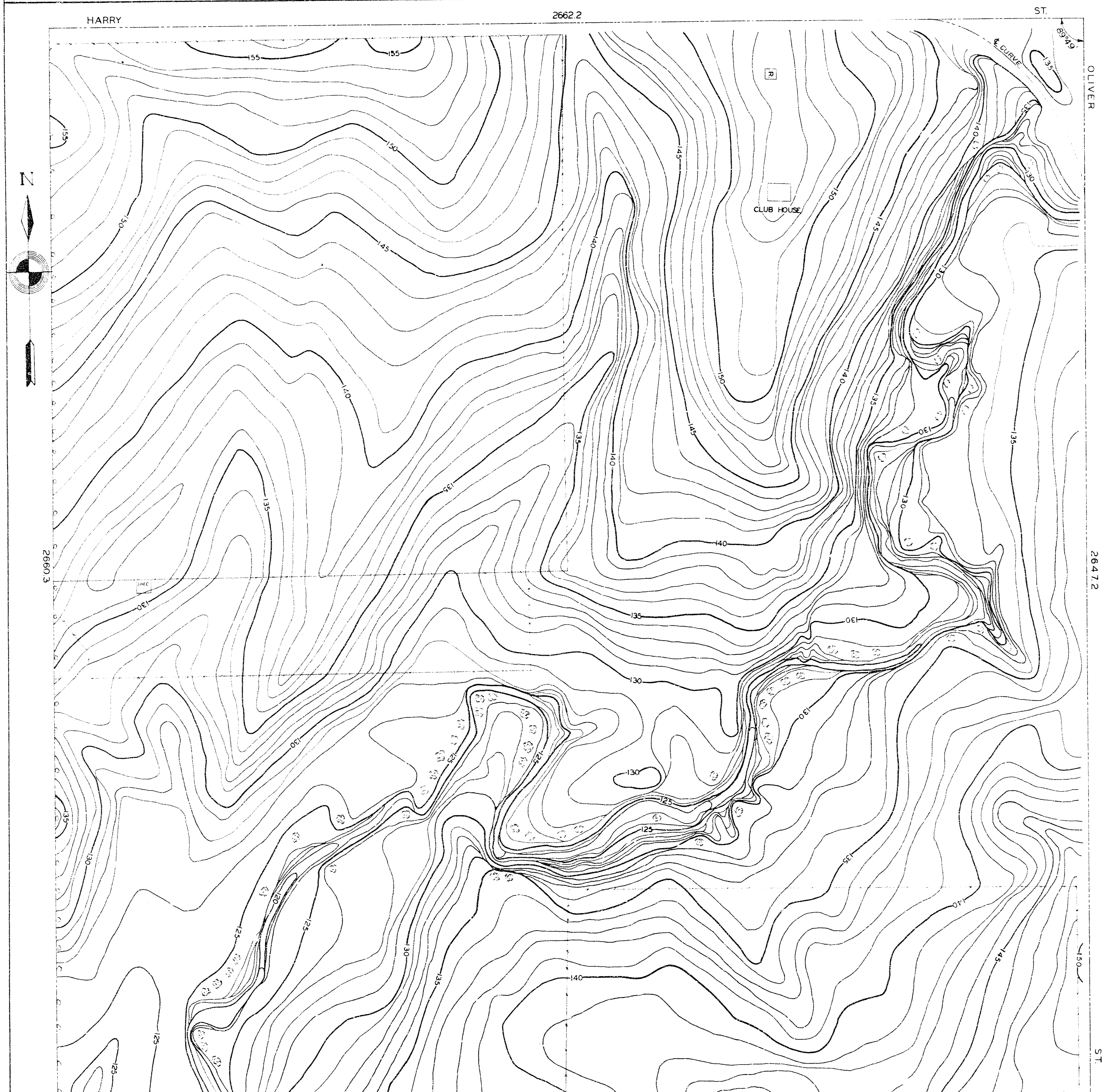
City Eng. Dept. File
N.E. 1/4 SEC 35 T. 27 S. R. 1 E.

WICHITA KANSAS

B.M.#6 X ON NORTH END OF WEST COPING OF 1ST CULVERT
SOUTH OF HARRY ON OLIVER. ELEV. 136.79

B.M.#7 IRON PLATE AT 1/4 CORNER EAST OF HILL SIDE ON
HARRY. ELEV. 154.16

B.M.#8 IRON THIMBLE IN PAVEMENT AT 1/4 CORNER SOUTH
OF HARRY ON OLIVER. ELEV. 148.7



CITY PLANNING COMMISSION
PREPARED BY WORKS PROGRESS ADMINISTRATION

DRAWN BY R.E. FRIZZELLE. CHECKED BY L.K. WHITE

SUPERVISED BY H.S. DENISON

1936 INST. MAN R.D. WILLIAMS SCALE 1"=100 FEET.

City Eng. Dept. File
NE. 1/4 SEC 35 T. 27 S. R. 1 E.

WICHITA KANSAS

B.M.#6 X ON NORTH END OF WEST COPING OF 1ST CULVERT
SOUTH OF HARRY ON OLIVER. ELEV. 136.79

B.M.#7 IRON PLATE AT 1/4 CORNER EAST OF HILLSIDE ON
HARRY. ELEV. 154.16

B.M.#8 IRON THIMBLE IN PAVEMENT AT 1/4 CORNER SOUTH
OF HARRY ON OLIVER. ELEV. 148.7

