

CITY PLANNING COMMISSION  
PREPARED BY WORKS PROGRESS ADMINISTRATION

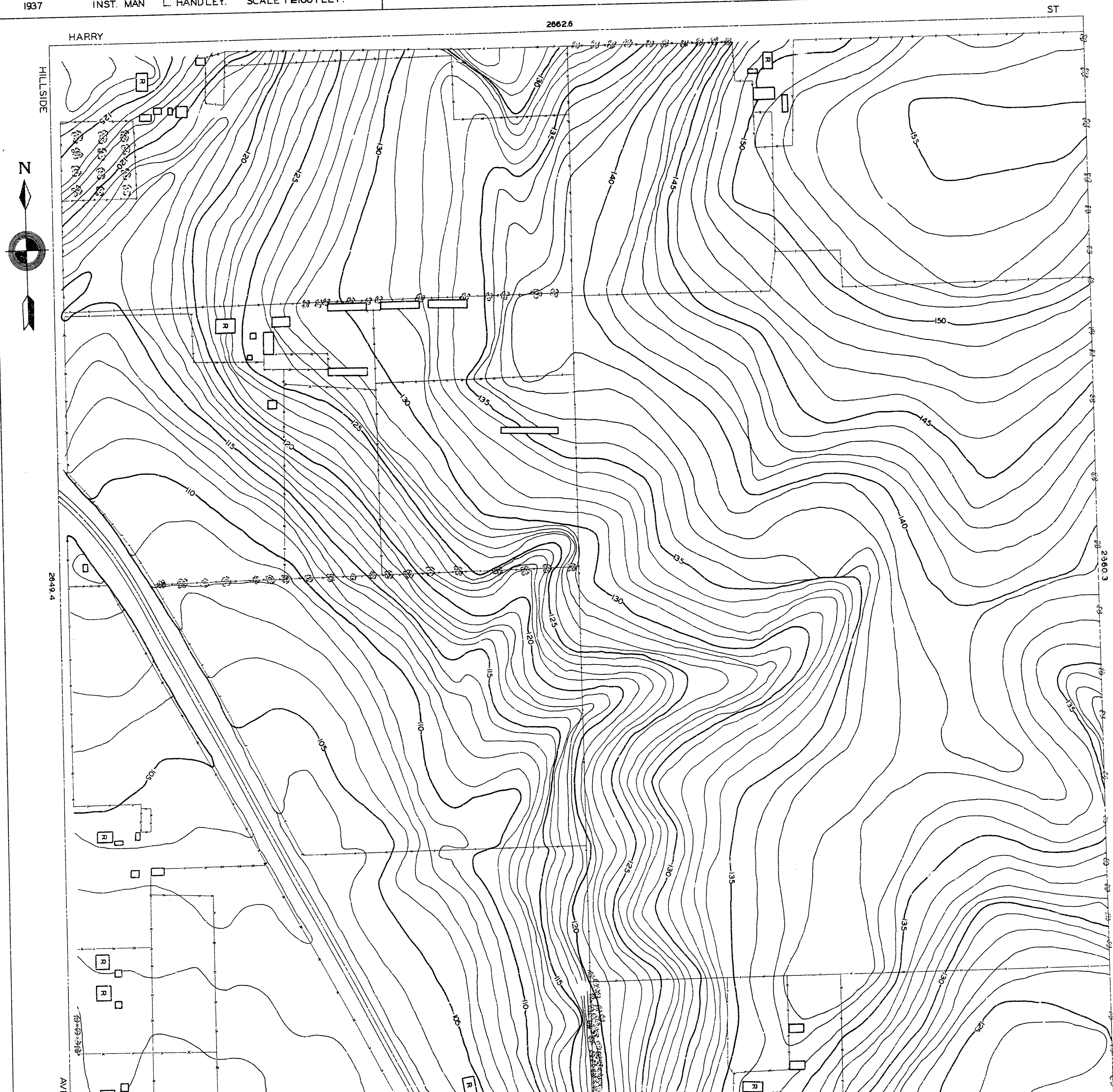
DRAWN BY RE. FRIZZELLE. CHECKED BY L.K. WHITE.

SUPERVISED BY H.S. DENISON.

1937 INST. MAN L. HANDLEY. SCALE 1"=100 FEET.

N.W.  $\frac{1}{4}$  SEC 35 T. 27 S. R. 1 E.

B.M.#7 IRON PLATE AT  $\frac{1}{4}$  CORNER EAST OF HILLSIDE ON  
HARRY. ELEV. 154.16



CITY PLANNING COMMISSION  
PREPARED BY WORKS PROGRESS ADMINISTRATION

DRAWN BY R.E. FRIZZELLE. CHECKED BY L.K. WHITE.

SUPERVISED BY H.S. DENISON.

1937 INST. MAN L. HANDLEY. SCALE 1"=100 FEET.

N.W. 1/4 SEC 35 T. 27 S. R. 1 E.

B.M.#7 IRON PLATE AT CORNER EAST OF HILLSIDE ON HARRY. ELEV. 154.16.

