

CITY PLANNING COMMISSION
PREPARED BY WORKS PROGRESS ADMINISTRATION

DRAWN BY R.E. FRIZZELLE. CHECKED BY L.K. WHITE.

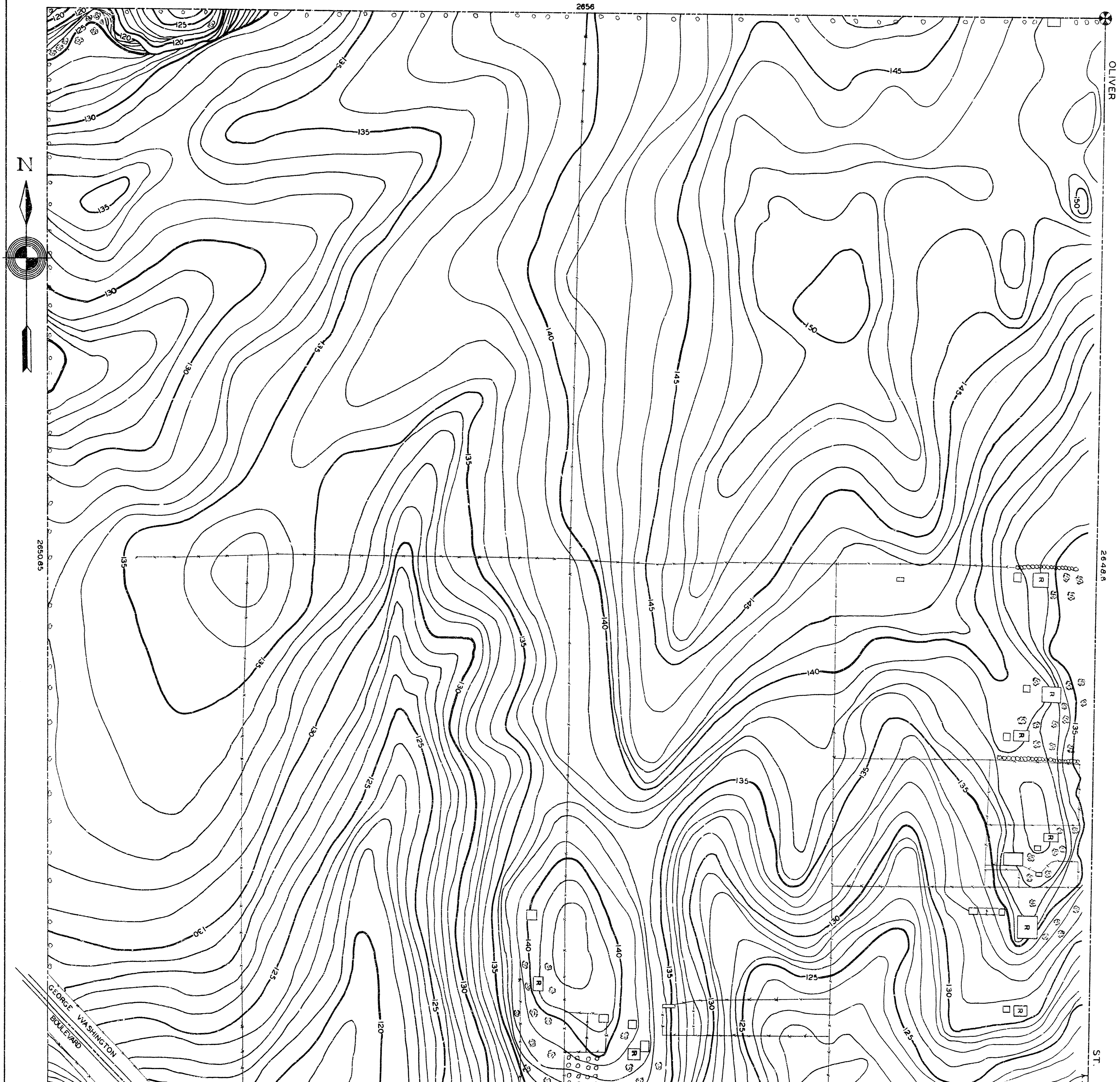
SUPERVISED BY H.S. DENISON

1936 INST. MAN R.D. WILLIAMS SCALE 1"=100 FEET

SE. 1/4 SEC. 35 T. 27 S. R. 1 E.

B.M.# 5 X ON NORTH EDGE OF 1ST WOOD BOX CULVERT
WEST OF OLIVER ON PAWNEE. ELEV. 122.1

B.M.# 8 IRON-1/4 CORNER SOUTH OF HARRY ON OLIVER
— ELEV. 148.71 —



CITY PLANNING COMMISSION
PREPARED BY WORKS PROGRESS ADMINISTRATION

DRAWN BY R.E. FRIZZELLE. CHECKED BY L.K. WHITE.

SUPERVISED BY H.S. DENISON

1936 INST. MAN R.D. WILLIAMS SCALE 1"=100 FEET

S.E. 1/4 SEC. 35 T. 27 S. R. 1 E.

B.M.# 5 X ON NORTH EDGE OF 1ST WOOD BOX CULVERT
WEST OF OLIVER ON PAWNEE. ELEV. 122.1

B.M.# 8 IRON-1/4 CORNER SOUTH OF HARRY ON OLIVER
— ELEV. 148.71—

