

LEGEND

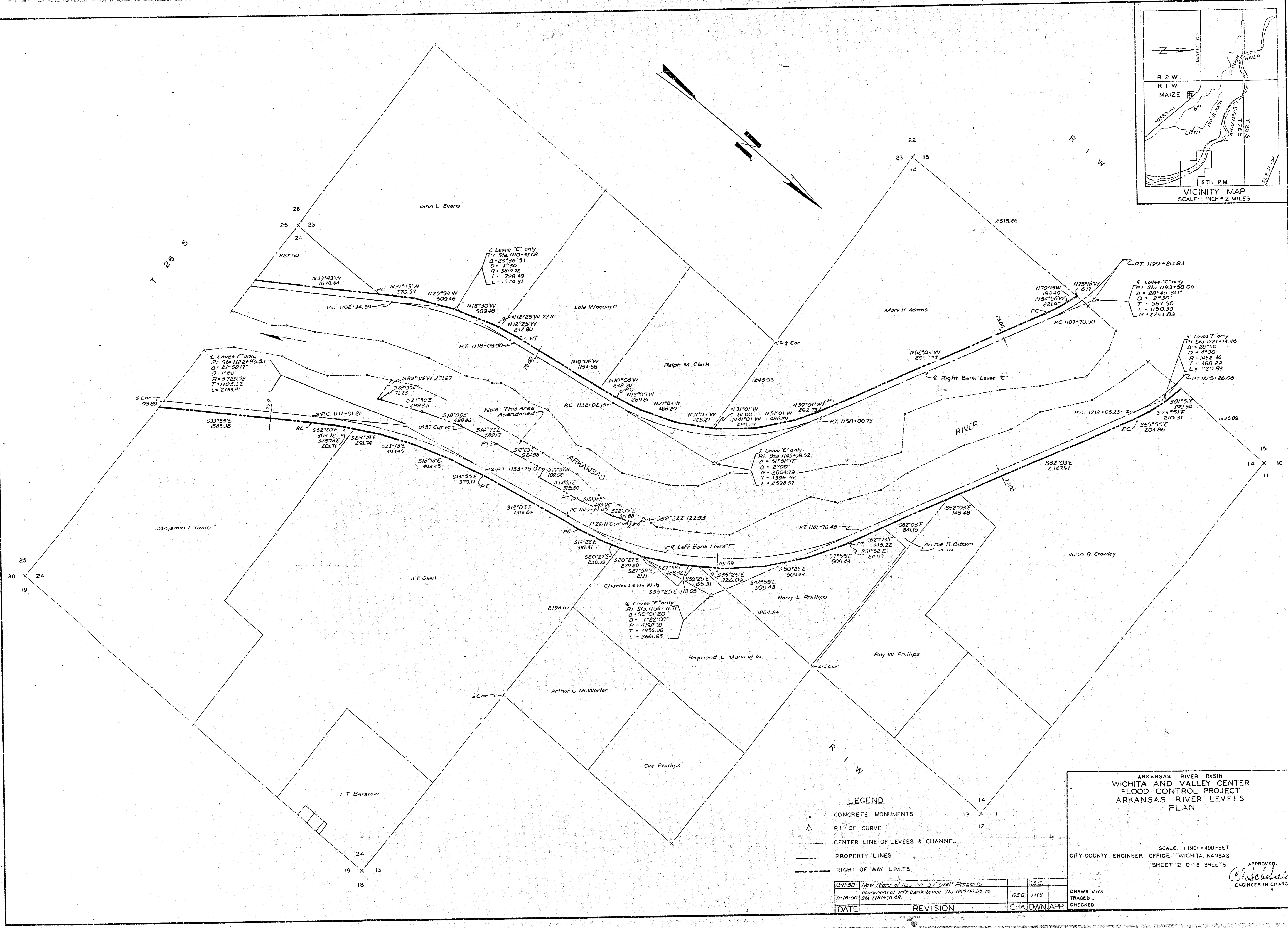
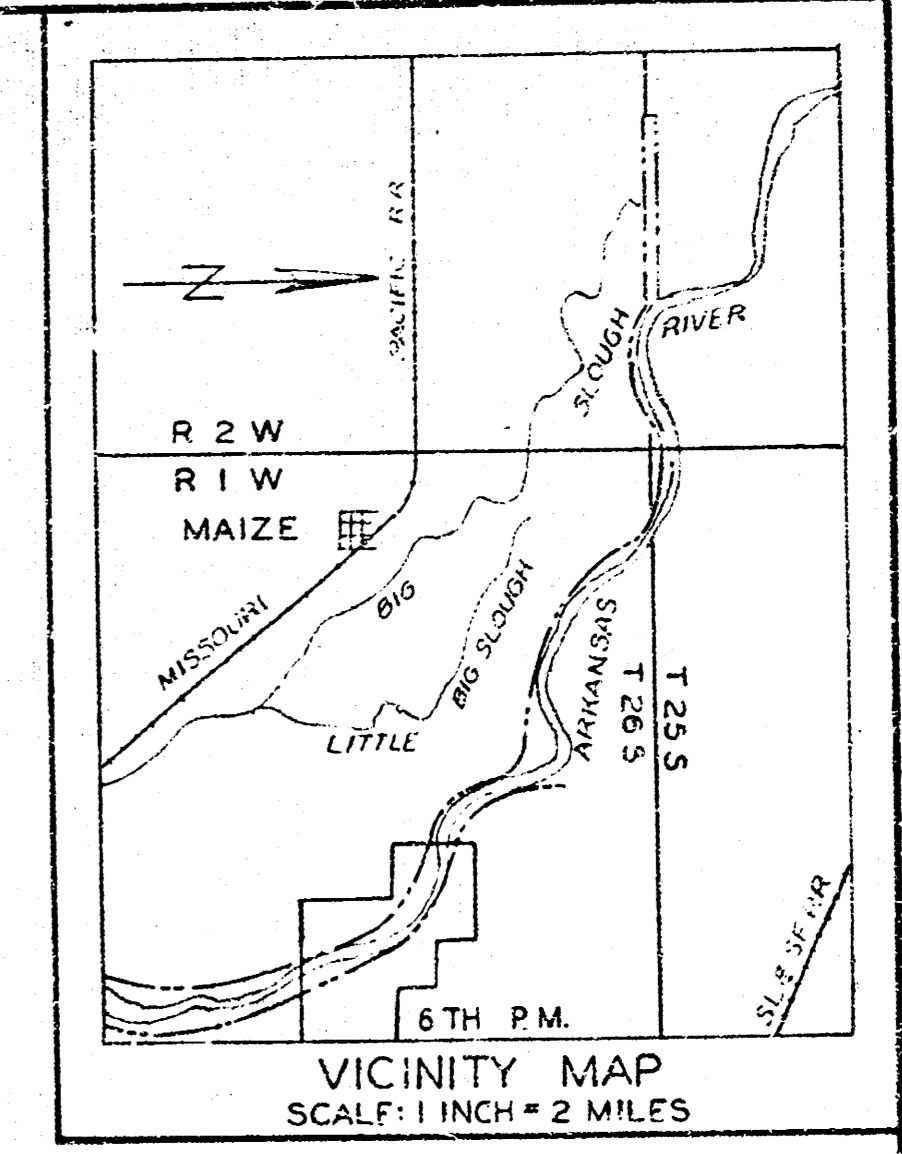
- CONCRETE MONUMENTS
- △ P.I. OF CURVE
- CENTER LINE OF LEVEES & CHANNEL
- PROPERTY LINES
- RIGHT OF WAY LIMITS

ARKANSAS RIVER BASIN
 WICHITA AND VALLEY CENTER
 FLOOD CONTROL PROJECT
 ARKANSAS RIVER LEVEES
 PLAN

SCALE 1 INCH = 400 FEET
 CITY-COUNTY ENGINEER OFFICE, WICHITA, KANSAS
 SHEET 1 OF 6 SHEETS

APPROVED
[Signature]
 ENGINEER IN CHARGE

DRAWN J.R.S.
 TRACED
 CHECKED



LEGEND

- CONCRETE MONUMENTS
- △ P.I. OF CURVE
- CENTER LINE OF LEVEES & CHANNEL
- PROPERTY LINES
- RIGHT OF WAY LIMITS

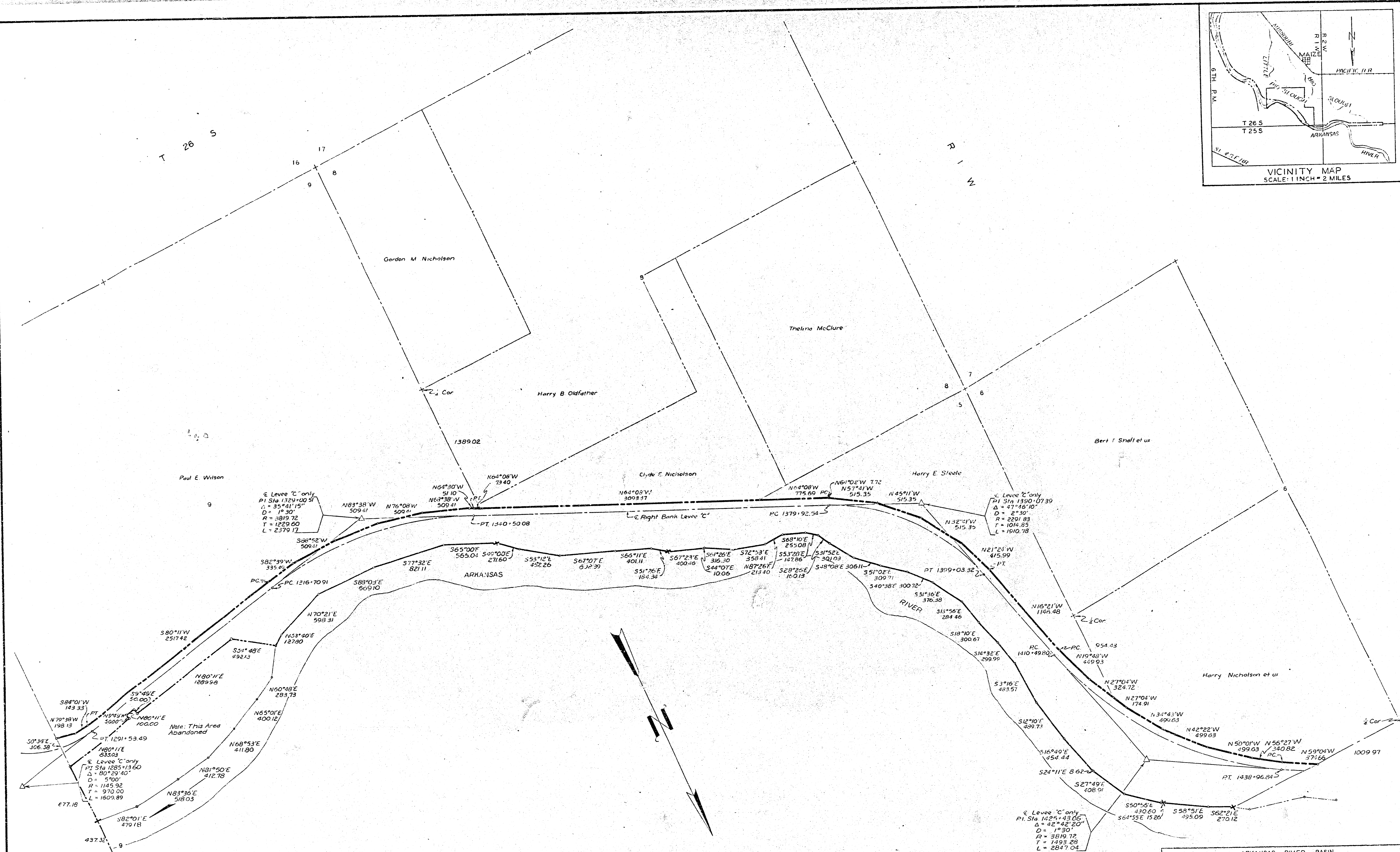
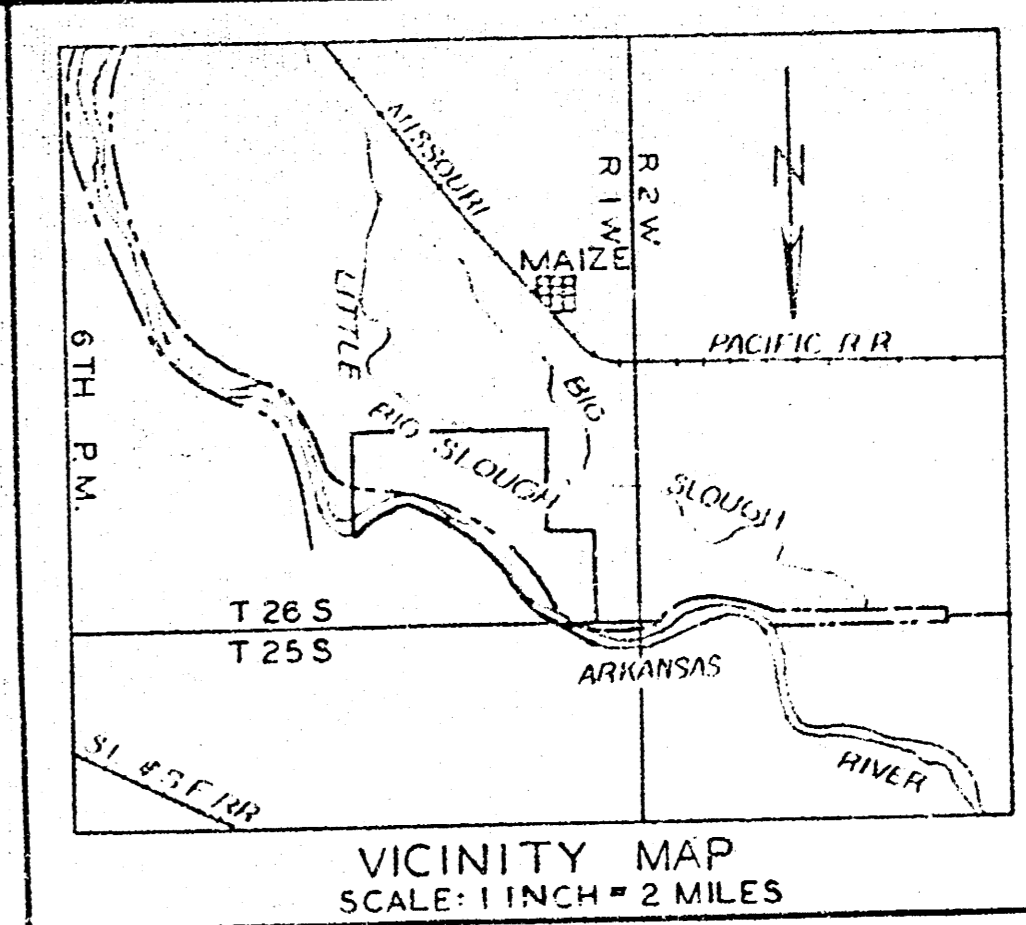
DATE	REVISION	CHK	DWN	APP.
12-11-50	New Right of Way on J. F. Osell Property			
11-16-50	Alignment of Left Bank Levee Sta 1185+14.25 to Sta 1181+76.48	GSG	JRS	

ARKANSAS RIVER BASIN
 WICHITA AND VALLEY CENTER
 FLOOD CONTROL PROJECT
 ARKANSAS RIVER LEVEES
 PLAN

SCALE: 1 INCH=400 FEET
 CITY-COUNTY ENGINEER OFFICE, WICHITA, KANSAS
 SHEET 2 OF 6 SHEETS

APPROVED: *[Signature]*
 ENGINEER IN CHARGE

DRAWN JRS:
 TRACED
 CHECKED



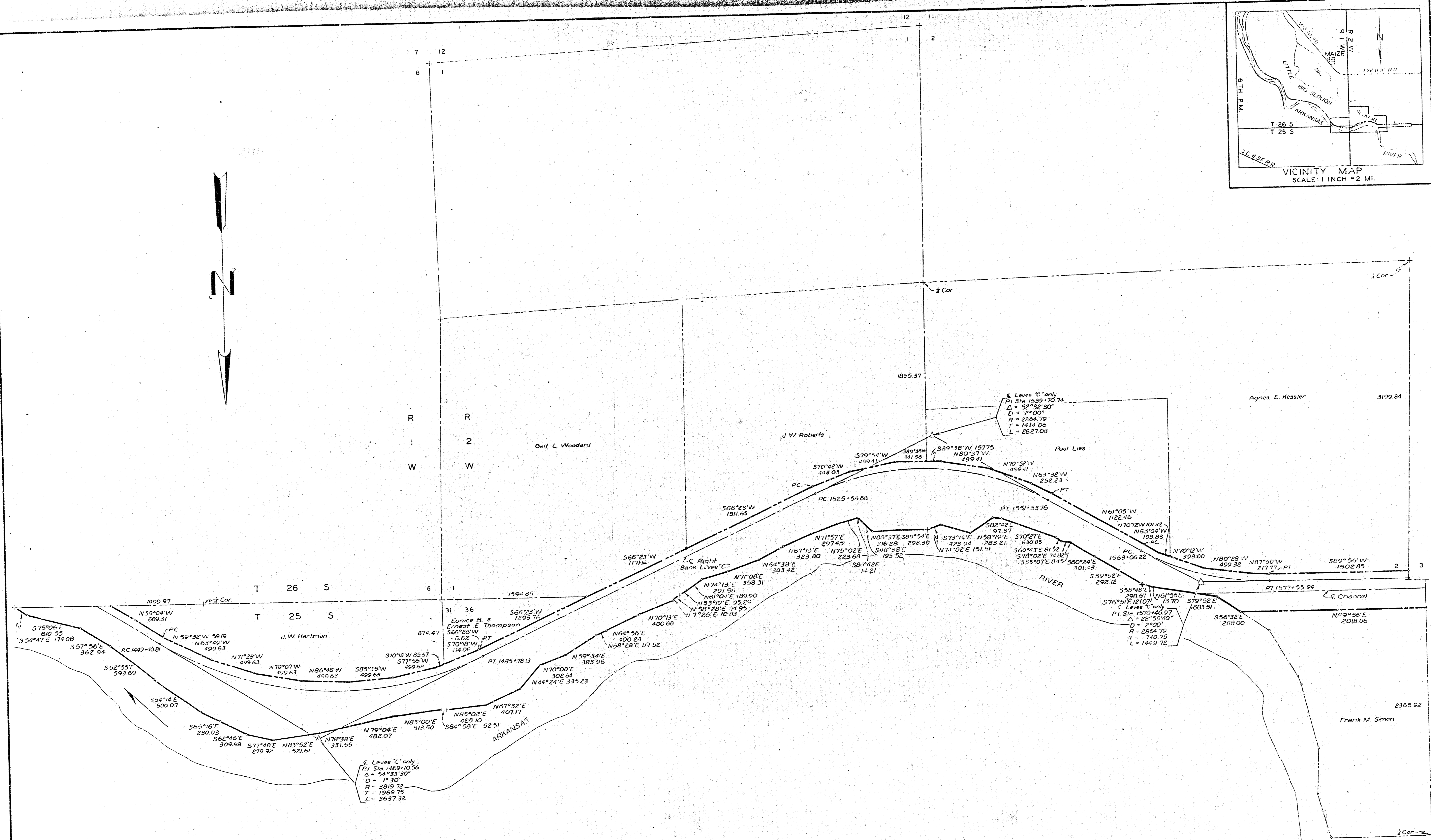
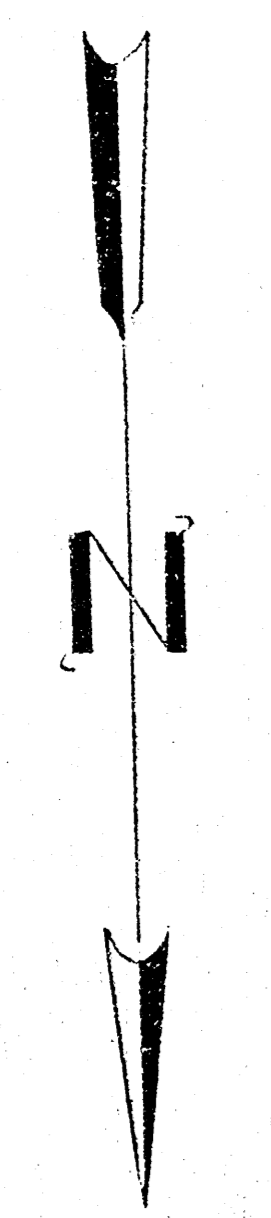
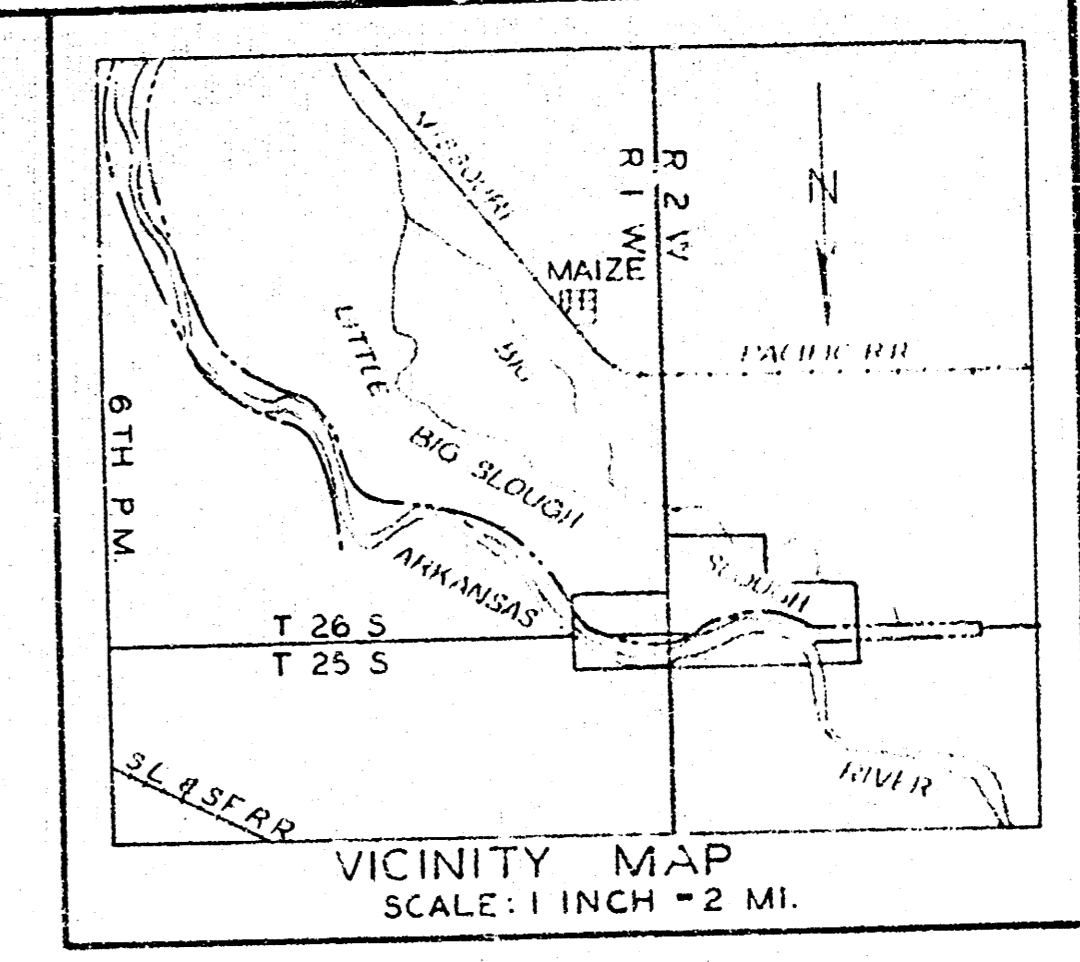
- LEGEND**
- CONCRETE MONUMENTS
 - △ P.I. OF CURVES
 - CENTER LINE OF LEVEES & CHANNEL
 - PROPERTY LINES
 - RIGHT OF WAY LIMITS

ARKANSAS RIVER BASIN
 WICHITA AND VALLEY CENTER
 FLOOD CONTROL PROJECT
 ARKANSAS RIVER LEVEES
 PLAN

SCALE: 1 INCH = 400 FEET
 CITY-COUNTY ENGINEER OFFICE, WICHITA, KANSAS
 SHEET 4 OF 6 SHEETS

APPROVED
W. Scholfield
 ENGINEER-IN-CHARGE

DATE	12/1/50	REVISION	New Right of Way on Paul E. Wilson Property	CHK	G.S.G.	DWN	T.L.H.	APP	TRACED	DRAWN	J.R.S.
									CHECKED		



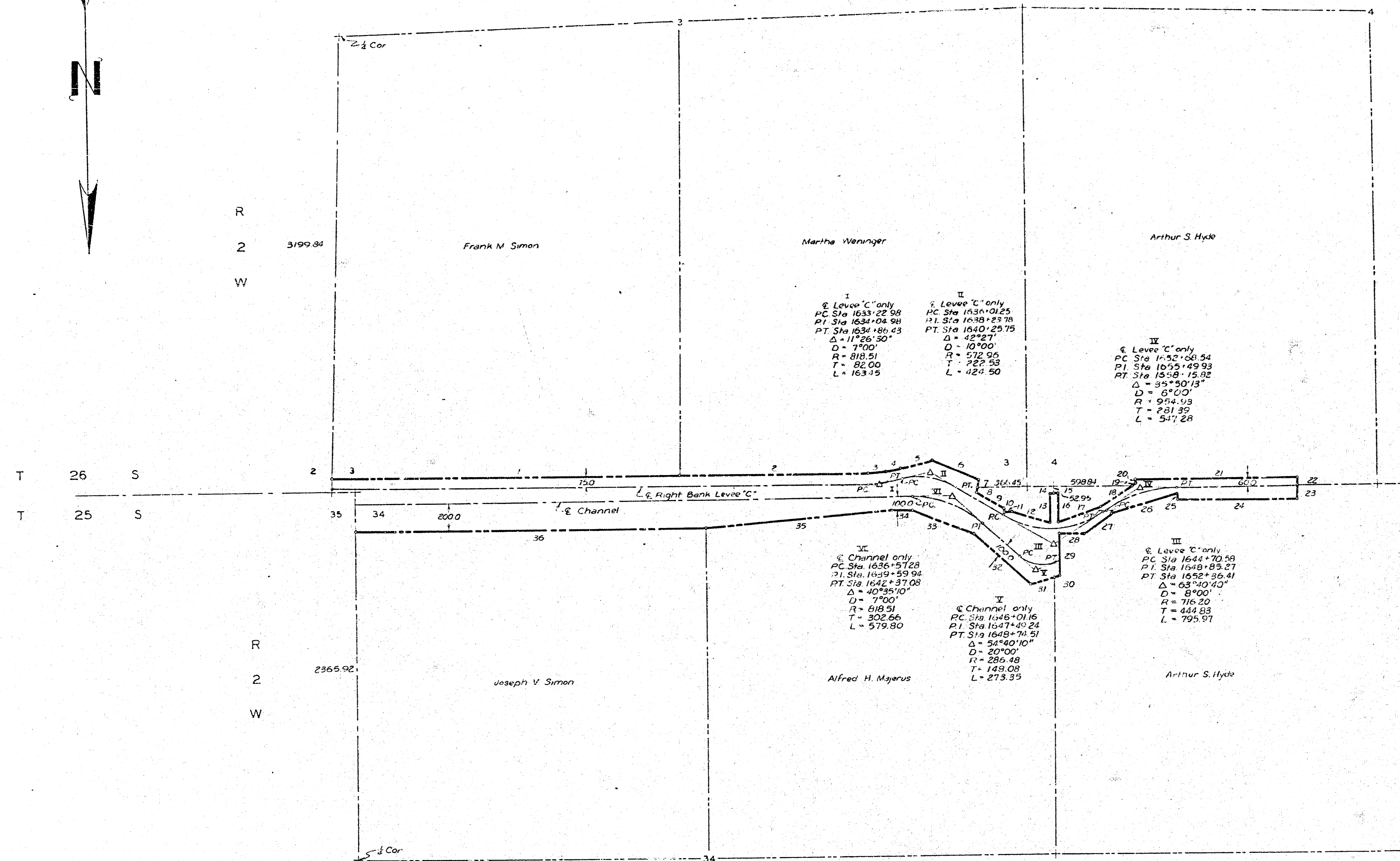
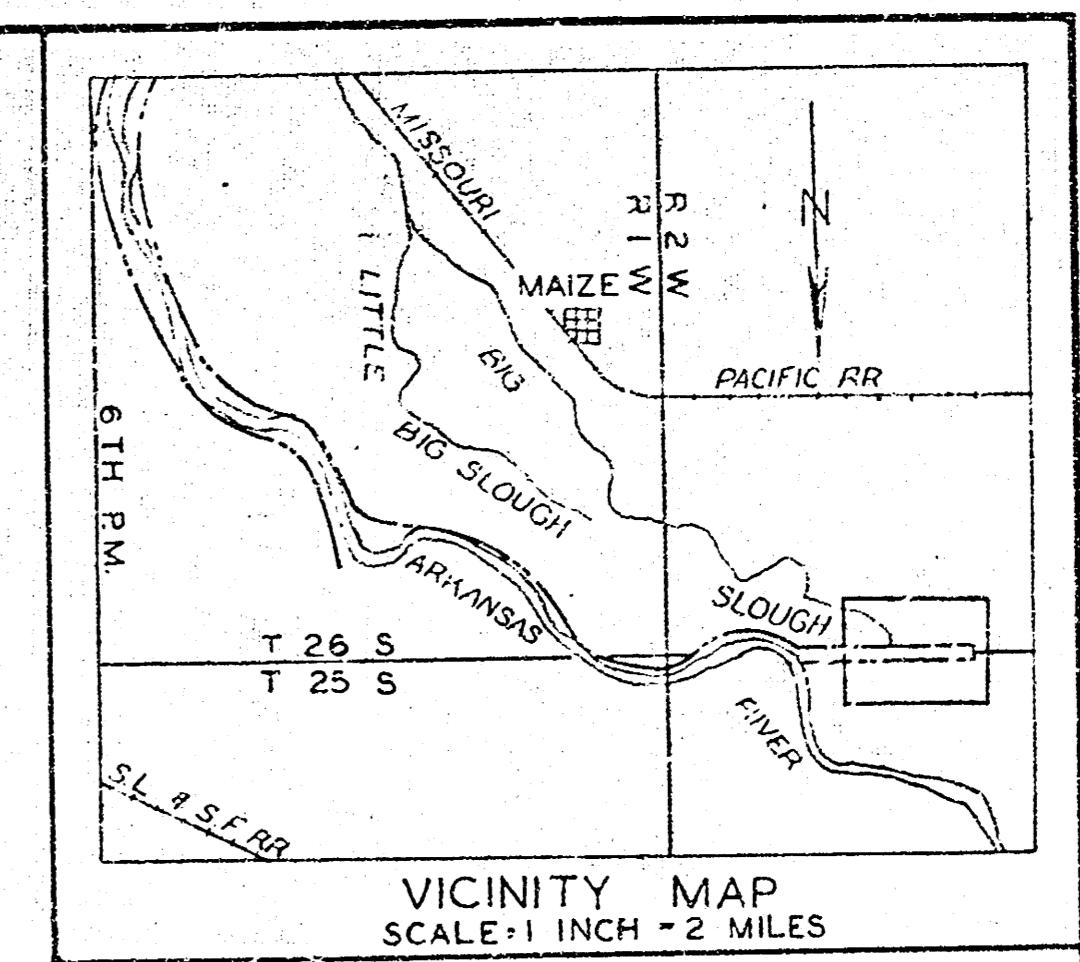
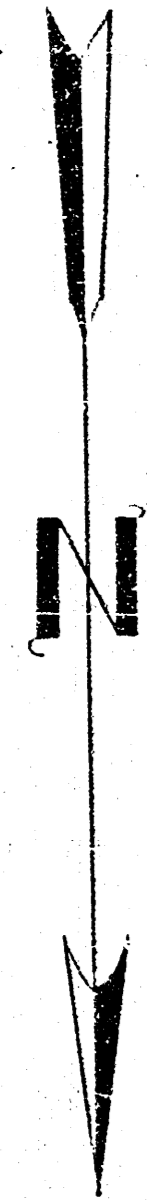
- LEGEND**
- CONCRETE MONUMENTS
 - △ P.I. OF CURVES
 - CENTER LINE OF LEVEES & CHANNEL
 - PROPERTY LINES
 - RIGHT OF WAY LIMITS

ARKANSAS RIVER BASIN
WICHITA AND VALLEY CENTER
FLOOD CONTROL PROJECT
ARKANSAS RIVER LEVEES
PLAN

SCALE: 1 INCH = 400 FEET
CITY-COUNTY ENGINEER OFFICE, WICHITA, KANSAS
SHEET 5 OF 6 SHEETS

APPROVED:
[Signature]
ENGINEER IN CHARGE

DRAWN J.R.S.
TRACED
CHECKED



Course	Bearing	Distance
1	S89°56'W	2682.05
2	S89°56'W	1432.15
3	S84°12'W	145.23
4	S78°25'W	114.52
5	S78°25'W	251.65
6	N68°10'W	373.48
7	N 9°14'E	51.80
8	N 9°44'E	38.20
9	N 59°04'W	242.81
10	N 0°06'W	21.38
11	S 89°56'W	56.90
12	N 73°41'W	201.75
13	S 0°13'W	208.80
14	N 80°32'W	30.00
15	N 89°32'W	30.00
16	N 0°28'E	207.95
17	S 72°23'W	347.56
18	S 57°15'W	285.03
19	S 57°15'W	32.15
20	S 0°06'W	24.40
21	N 80°32'W	1217.07
22	N 0°06'E	43.04
23	N 0°06'E	105.59
24	S 89°56'E	977.07
25	S 0°06'W	40.00
26	N 73°41'E	511.43
27	N 57°15'E	256.99
28	S 89°32'E	191.52
29	N 0°13'E	302.72
30	N 75°51'E	31.00
31	N 75°51'E	183.76
32	S 49°20'E	563.56
33	S 69°47'E	458.39
34	N 85°55'E	152.30
35	N 85°55'E	1425.47
36	N 89°56'E	2649.52

- LEGEND**
- CONCRETE MONUMENTS
 - △ P.I. OF CURVE
 - CENTER LINE OF LEVEES & CHANNEL
 - PROPERTY LINES
 - RIGHT OF WAY LIMITS

ARKANSAS RIVER BASIN
WICHITA AND VALLEY CENTER
FLOOD CONTROL PROJECT
ARKANSAS RIVER LEVEES
PLAN

SCALE: 1 INCH = 400 FEET
CITY-COUNTY ENGINEER OFFICE, WICHITA, KANSAS
SHEET 6 OF 6 SHEETS

APPROVED
[Signature]
ENGINEER IN CHARGE

DRAWN J.R.S.
CHECKED