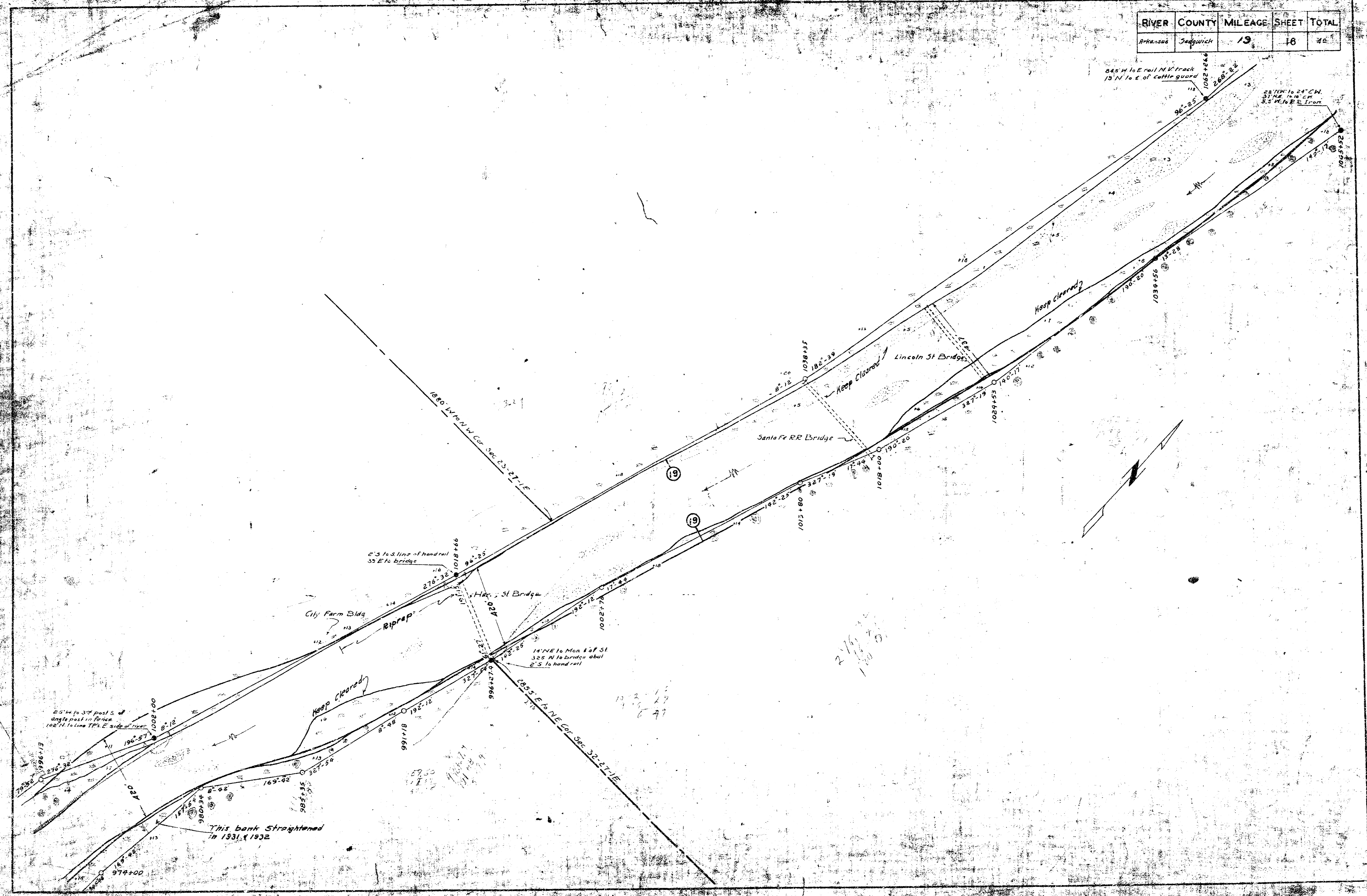


RIVER COUNTY	MILEAGE	SHEET	TOTAL	
Arkansas	Jedburgh	19	16	26



2 1/4 to 3 1/4 post S of
angle post in fence
100' N to line TP's E side of river

This bank Straightened
in 1931 & 1932

City Farm Bldg

Biprap

Lincoln St Bridge

Santa Fe RR Bridge

Lincoln St Bridge

Keep Cleared

Keep Cleared

Keep Cleared



250' N to E rail of track
15' N to E of cattle guard

25' N to 24' CM
31' N to 1' CM
S 1/4 Sec 34 T 12 N R 10 E

2 1/4 to 3 1/4
100' N to line TP's E side of river

14' N to Mon E of St
3' E of bridge about
E.S. to hand rail

2057 E 1/4 Sec 32 T 12 N R 10 E

1002+00

1008+00

1018+00

1022+00

1027+00

1034+50

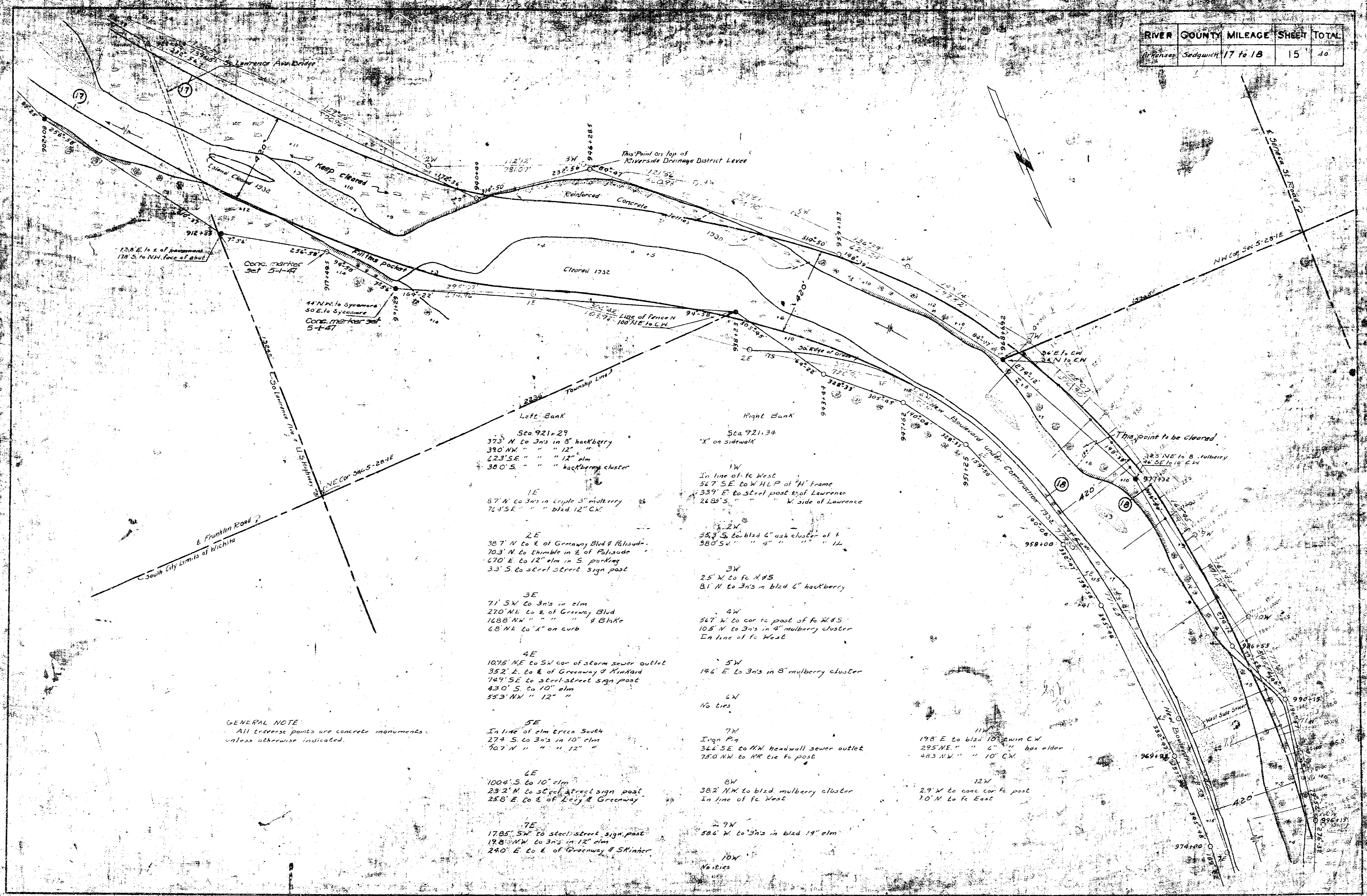
1037+00

1042+00

1047+00

1052+00

RIVER	COUNTY	MILEAGE	SHEET	TOTAL
Wichita	Sedgewick	17 to 18	15	40



GENERAL NOTE
 All traverse points are concrete monuments, unless otherwise indicated.

- Sta. 921+29
 373° N to 3 1/2 in 8" hackberry
 390 NW " " " 12" elm
 223° SE " " " 12" elm
 380° S " " " hackberry cluster
- 1E
 87° N to 3 1/2 in triple 5" mulberry
 76° SE " " " bld. 12" CW
- 2E
 38° N to E of Greenway Blvd & Palisade
 70° N to double in E of Palisade
 67° E to 12" elm in S parking
 33° S to steel street sign post
- 3E
 71° SW to 3 1/2 in elm
 270° NE to E of Greenway Blvd
 148° NW " " " 4 Blk's
 68° N to " " on curb
- 4E
 109° NE to SW cor of storm sewer outlet
 33° E to E of Greenway & Kirkland
 74° SE to steel street sign post
 43° S to 10" elm
 55° NW " 12" "
- 5E
 In line of elm across South
 274° S to 3 1/2 in 10" elm
 70° N " " " 12" "
- 6E
 1004° S to 10" elm
 23° N to steel street sign post
 258° E to S of Leary & Greenway
- 7E
 178° SW to steel street sign post
 198° NW to 3 1/2 in 12" elm
 240° E to E of Greenway & Skinner

- Sta. 921+34
 " " on sidewalk
- 1W
 In line of Fe West
 54° SE to W.H.P. of "H" frame
 133° E to steel post top of Laurence
 248° S " " " W side of Laurence
- 2W
 34° S to bld. 6" oak cluster of F
 380° S " " " " " 12"
- 3W
 25° W to Fe N#5
 81° N to 3 1/2 in bld. 6" hackberry
- 4W
 54° W to cor to post of Fe W#5
 105° N to 3 1/2 in 4" mulberry cluster
 In line of Fe West
- 5W
 196° E to 3 1/2 in 8" mulberry cluster
- 6W
 No ties
- 7W
 In line of
 346° SE to NW headwall sewer outlet
 750° NW to NW tie Fe post
- 8W
 382° NW to bld. mulberry cluster
 In line of Fe West
- 9W
 286° W to 3 1/2 in bld. 19" elm
- 10W
 No ties

- 11W
 198° E to bld. 10" elm CW
 295° NE " " " 6" " box elder
 483° NW " " 10" CW
- 12W
 29° N to cons. car Fe post
 10° N to Fe East