

GENERAL NOTE:
 All traverse points above Douglas Ave. are 1948 traverse points. Points indicated thus * are points on original (1932) traverse. Dashed line traverse indicates original traverse. All 1948 traverse points are marked by iron pins unless otherwise indicated.
 1948 traverse is balanced and adjusted with closure lines as shown. Azimuths and coordinates are from assumed data. Bank lines below Douglas Ave. are as traced from original tracing. Bank lines above Douglas Ave. are from topography, June, 1948.

RIGHT BANK

- Sta. 1131+15.36
 N-9,746.73 E-7210.18
 "X" on E. sidewalk S. end Seneca St. Bri.
 7.4' E. to handrail post.
 0.25' S. to end of bridge.
- Sta. 1125+14.01
 N-9,932.24 E-8,201.40
 9.5' S. to edge of N curb McLean Blvd.
 9.4' S.W. to Handley & McLean Blvd. Marker
 45.6' N. to St. Light conc. post.
- Sta. 1119+78.68
 N-9,918.79 E-8,740.55
 9.6' S. to base of light post.
 9.7' S. to U.S. Engrs. B.M. TSB-89-1947
- Sta. 1112+58.24
 N-9,258.24 E-9,386.35
 U.S. Engrs. B.M. TSB-90-1947
- Sta. 1108+08.88
 N-8,968.02 E-9,738.38
 "X" on N. curb of N end 2nd St. Bri.
 5.25' E. to N.W. handrail.
- Sta. 1103+07.48
 N-8,516.02 E-9,449.01
 Concrete Monument, pipe in center
 19.3' N. to E. curb McLean Blvd.
- Sta. 1098+99.9
 N-8,114.70 E-10,056.25
 10.3' S. to N. rail Mo. Pac. R.R.
 16.0' S.E. to N. N. cor. Mo. Pac. Bri. Abbut.
 11.6' S.W. to Western Union T.P.
 14.8' N.W. to base of light pole - 425-10
- Sta. 1094+75.5
 N-7,704.87 E-10,144.67
 "X" on S. sidewalk of N end Douglas Ave. Bri.
 2.5' S. to handrail abbut.
 3.7' N. to N. end of bridge.

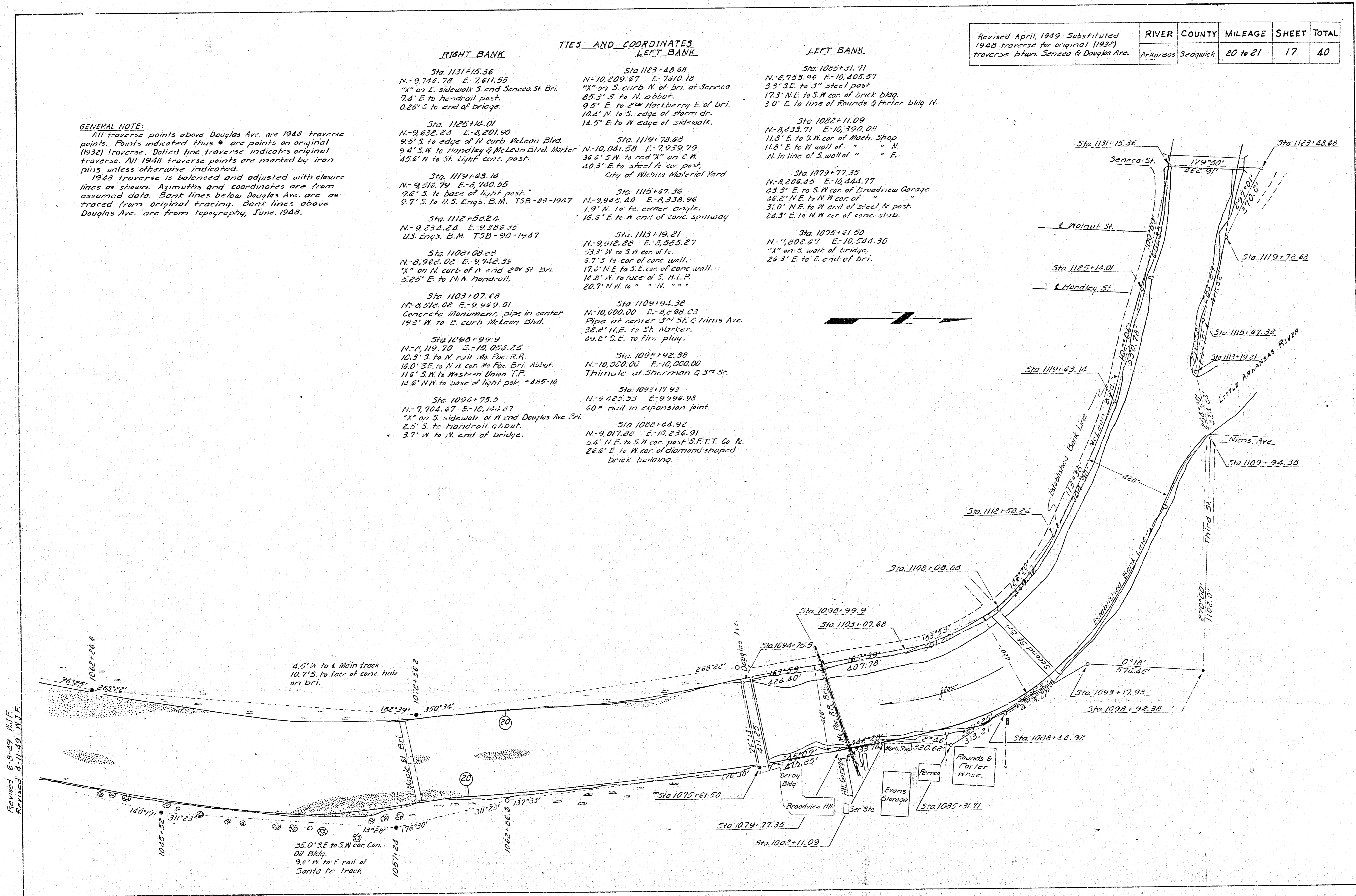
**TIES AND COORDINATES
 LEFT BANK**

- Sta. 1123+48.68
 N-10,209.87 E-7210.18
 "X" on S. curb N. of bri. at Seneca
 85.3' S. to N. abbut.
 9.5' E. to 2nd Hackberry E. of Bri.
 10.4' N. to S. edge of storm dr.
 14.5' E. to W. edge of sidewalk.
- Sta. 1119+78.68
 N-10,041.58 E-7,939.79
 36.6' S.W. to red "X" on C.W.
 40.3' E. to steel ft. cor. post.
 City of Wichita Material Yard
- Sta. 1115+67.36
 N-9,942.40 E-8,338.96
 1.9' N. to ft. corner angle.
 16.5' E. to N. end of conc. spillway
- Sta. 1113+19.21
 N-9,912.28 E-8,365.27
 53.3' W. to S.W. cor. of ft.
 67.3' to cor. of conc. wall.
 17.6' N.E. to S.E. cor. of conc. wall.
 14.8' W. to face of S. H.L.P.
 20.7' N.W. to "N. " " "
- Sta. 1109+94.38
 N-10,000.00 E-8,996.03
 Pipe at center 3rd St. G. Nims Ave.
 38.2' N.E. to St. Marker.
 44.2' S.E. to fire plug.
- Sta. 1092+92.38
 N-10,000.00 E-10,000.00
 Trimeter at intersection 3rd St.
- Sta. 1093+17.93
 N-9,425.53 E-9,996.98
 50' rail in expansion joint.
- Sta. 1088+44.92
 N-9,017.88 E-10,236.91
 5.6' N.E. to S.W. cor. post S.F.T.T. Co. ft.
 26.6' E. to W. cor. of diamond shaped
 brick building.

LEFT BANK

- Sta. 1085+31.71
 N-8,755.96 E-10,405.57
 3.3' S.E. to 3" steel post
 17.3' N.E. to S.W. cor. of brick bldg.
 3.0' E. to line of Rounds & Porter bldg N.
- Sta. 1082+11.09
 N-8,433.71 E-10,390.08
 11.8' E. to S.W. cor. of Mach. Shop
 11.8' E. to W. wall of " " N.
 N. In line of S. wall of " " E.
- Sta. 1079+77.35
 N-8,204.45 E-10,444.77
 43.3' E. to S.W. cor. of Broadview Garage
 36.2' N.E. to N.W. cor. of "
 31.0' N.E. to W. end of steel ft. post.
 28.3' E. to N.W. cor. of conc. slab.
- Sta. 1075+21.50
 N-7,802.67 E-10,544.30
 "X" on S. walk of bridge.
 26.3' E. to E. end of bri.

Revised April, 1949 Substituted 1948 traverse for original (1932) traverse btwn. Seneca & Douglas Ave.	RIVER	COUNTY	MILEAGE	SHEET	TOTAL
	Arkansas	Sedgwick	20 to 21	17	40



Revised 6-9-49 M.I.F.
 Revised 8-11-49 M.I.F.

TIES TO BIG
 RIVER BANK
 SURVEY from
 Little River Smith
 5-4-35