

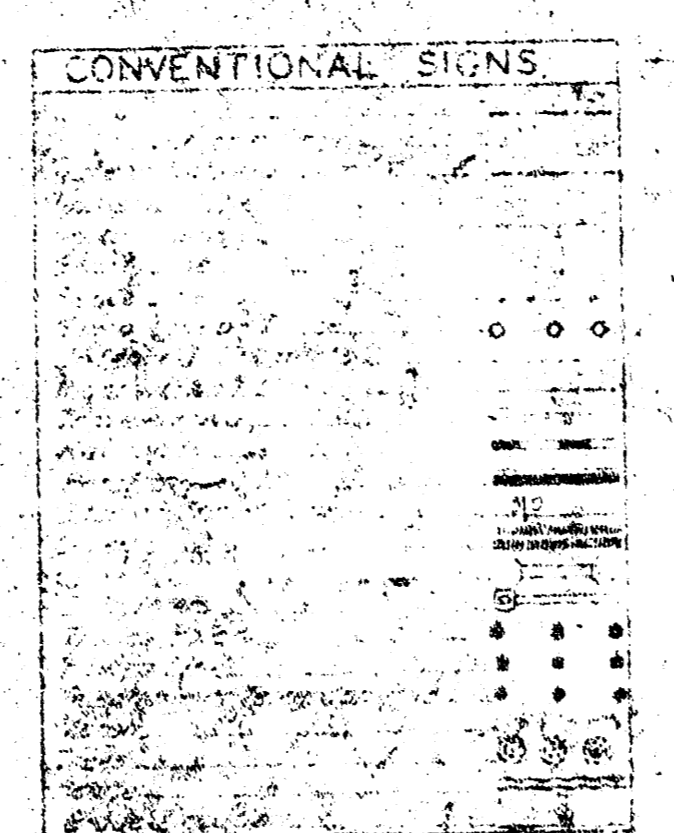
SEDGWICK COUNTY ENGINEERING



DEPARTMENT

PLAN & PROFILE OF PROPOSED

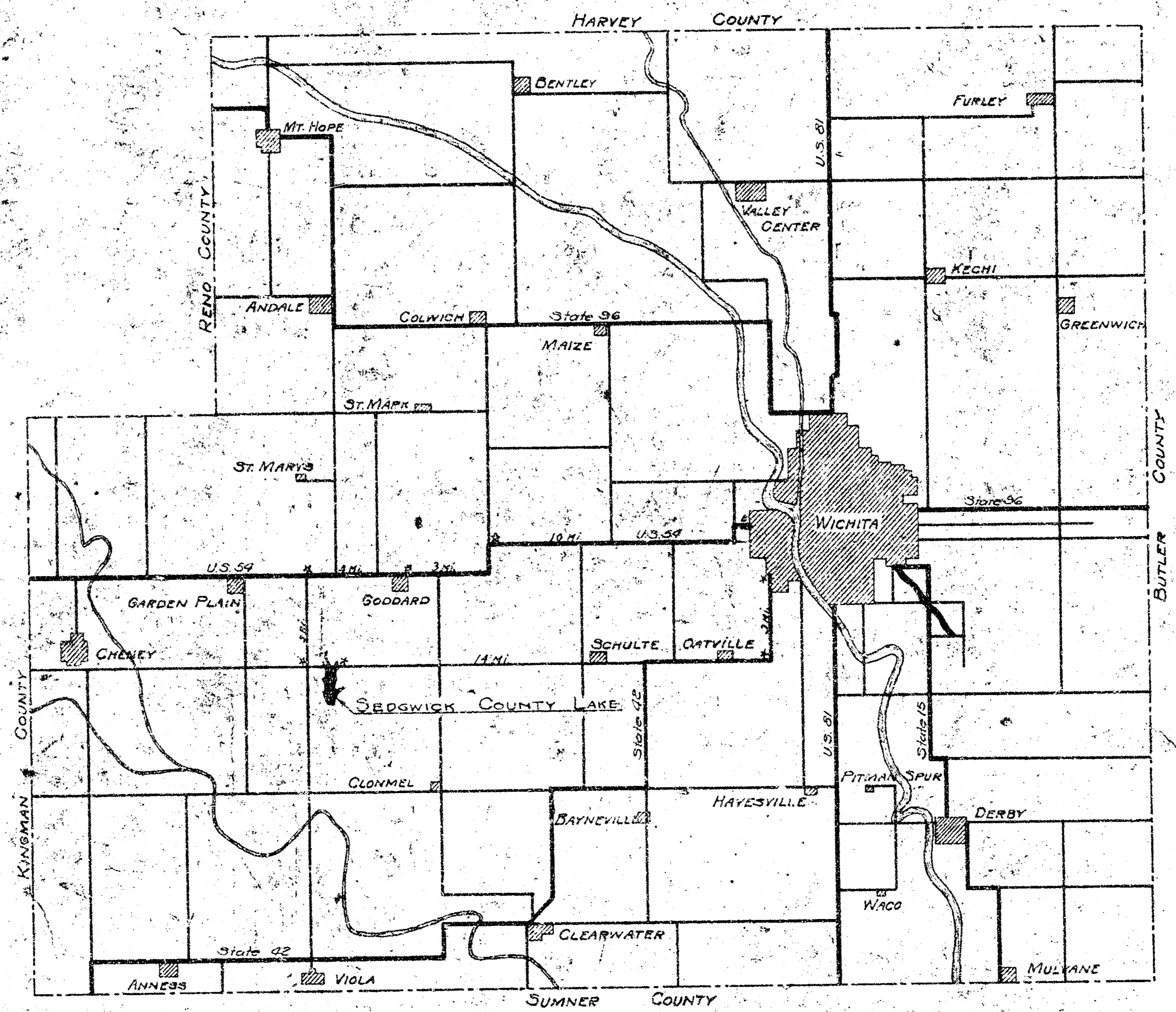
W. P. A. PROJECT SEDGWICK COUNTY LAKE



| DIST. | STATE | PROJ. | SHEET NO. | TOTAL SHEETS |
|-------|-------|-------|-----------|--------------|
| 4 | KANS. | 1 | 1 | 1 |

| No. | INDEX TO SHEETS |
|------|---|
| 1 | Title Sheet |
| 2 | Survey Control |
| 3 | Topography of Lake Site |
| 4 | Typical Sections & Quantities |
| 5 | Plan View of Dam |
| 6 | Profiles - E of Dam |
| 6a | Location of Filler Trench Drain |
| 7-7a | Intake Tower - Outlet Conduit |
| 7b | Detail of Outlet End Conduit |
| 8 | Cross Sections of Dam |
| 9 | Spillway Location |
| 10 | Spillway Profiles - Showing Top of ground & Shale |
| 11 | Spillway Cross Sections |
| 12 | Spillway Channel Control Section |
| 13 | Spillway Construction Elevation & Section of Spillway |
| 14 | Sec. A' Spillway Retaining Wall |
| 15 | Sec. B' Spillway Retaining Wall |
| 16 | Additional Basin Slab Between Sec. B' Wall & Basin Slab |
| 17 | Sec. C' Spillway Retaining Wall |
| 18 | Sec. D' Spillway Retaining Wall |
| 19 | Sec. E' Spillway Retaining Wall |
| 20 | Plan of Ogwa Section |
| 21 | Spillway Gate Detail |
| 22 | Spillway Deck Slab Detail |
| 23 | Reinforcement in Spillway |
| 24 | Reinforcement Schedule |
| 25 | Spillway Channel Control Sec. |
| 26 | Spilling Basin Detail & Misc. |

NOTE
PLANS UNDER DATE OF DECEMBER 5, 1939, ARE REVISED FINAL DRAWINGS OF PLANS TITLED, "PLAN AND PROFILE OF PROPOSED W.P.A. PROJECT SEDGWICK COUNTY LAKE", AND INCLUDE FINAL RECOMMENDATION OF U. S. ENGINEER'S OFFICE, TULSA, OKLAHOMA, AND THE STATE DIVISION OF WATER RESOURCES, TOPEKA, KANSAS. SHEETS NO. 9, 10, 11, AND 12 OF THE ORIGINAL PLANS HAVE BEEN ELIMINATED FROM THESE PLANS AND INCLUDED AS PART OF PLANS TITLED, "PLAN OF SPILLWAY FOR PROPOSED SEDGWICK COUNTY LAKE", DATED DECEMBER 5, 1939.



| DATE | REVISION | APPROVED |
|------|----------|----------|
| | | |
| | | |
| | | |
| | | |

O. C. CARLSON - ENGINEER
REVISED MAY 10, 1939 DEC 5 1939