

STATE OF KANSAS

STATE HIGHWAY COMMISSION

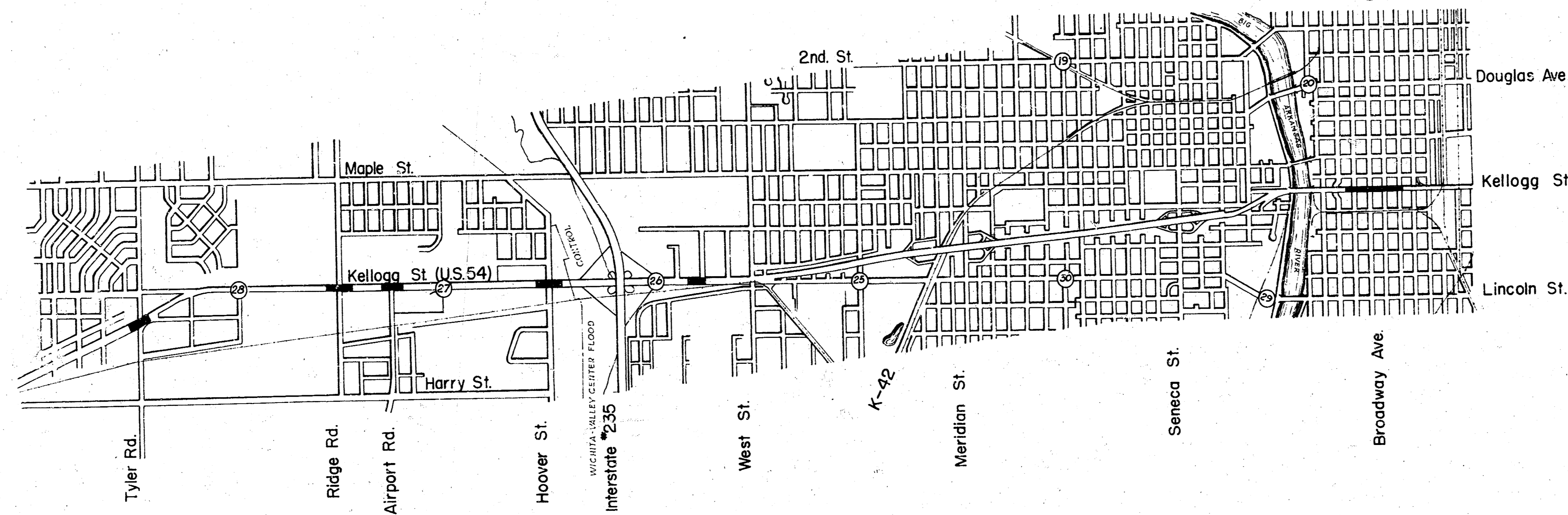


PLANS FOR IMPROVE AND RE-IMPROVING CERTAIN PORTIONS OF KELLOGG ST. (U.S.54)

SEDGWICK COUNTY  
CITY OF WICHITA

PUB. ROAD DIV. NO.	STATE	PROJECT NO.	FISCAL YEAR	SHEET NO.	TOTAL SHEETS
	KANSAS	54-87-K-526(2)	1963	1	12

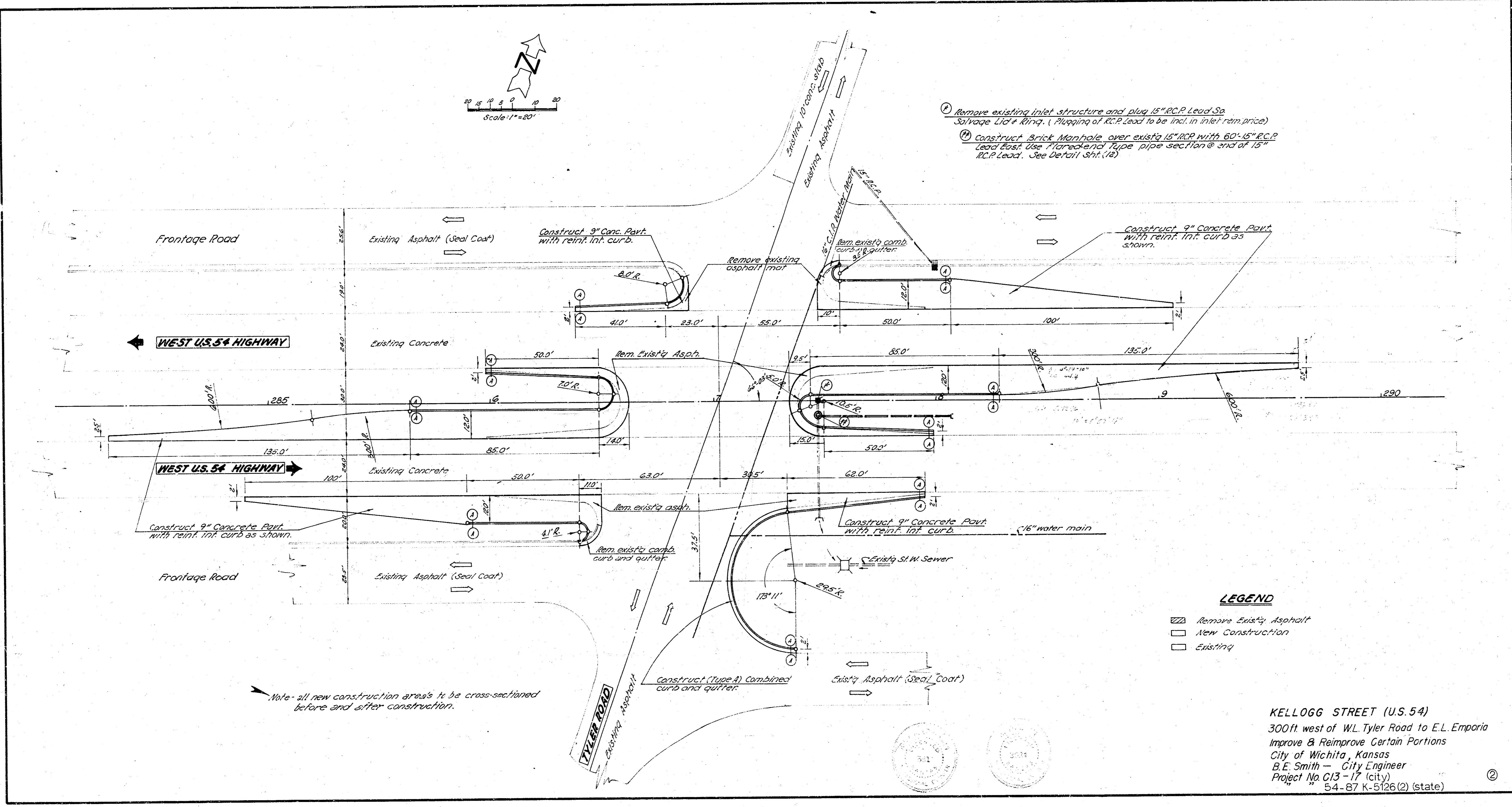
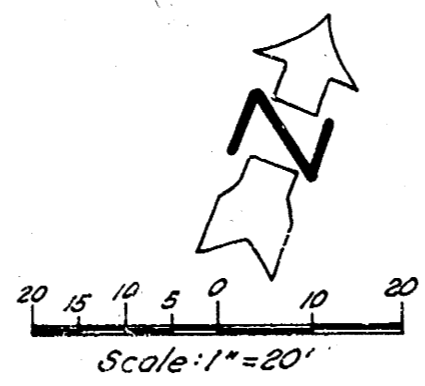
STATE PROJ. NO. 54-87-K-526(2)  
CITY PROJ. NO. C13-17



TRAFFIC SHALL BE CARRIED THROUGH CONSTRUCTION ON ENTIRE PROJECT.

APPROVED: *Walter Johnson*  
DATE: \_\_\_\_\_  
STATE HIGHWAY ENGINEER  
STATE HIGHWAY COMMISSION OF KANSAS

APPROVED: \_\_\_\_\_  
DATE: \_\_\_\_\_  
CITY ENGINEER  
DEPARTMENT OF PUBLIC WORKS  
CITY OF WICHITA, KANSAS



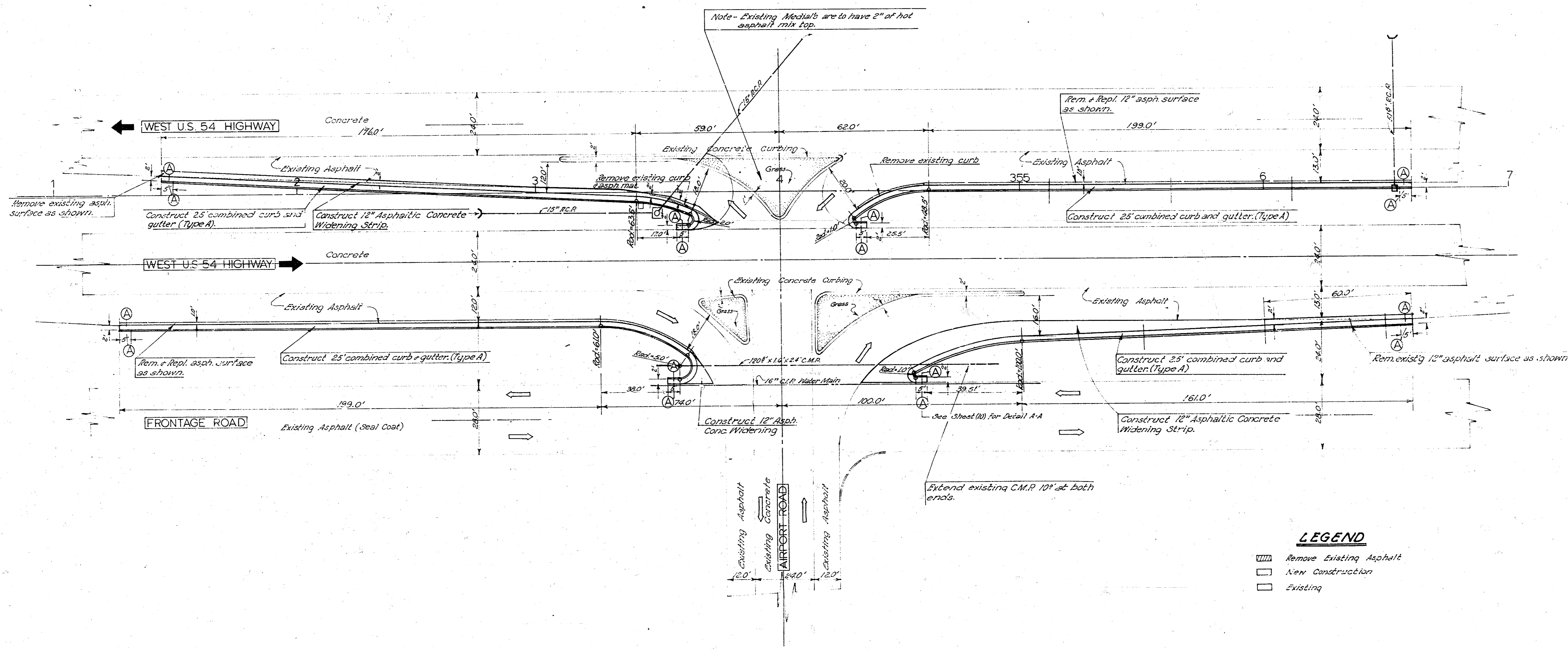
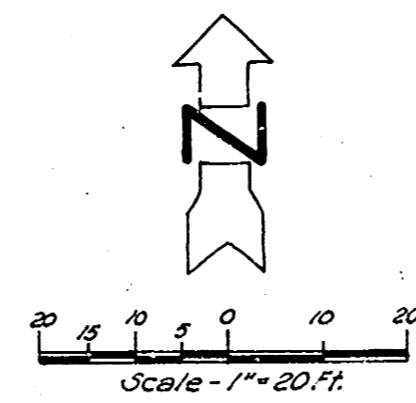
- ① Remove existing inlet structure and plug 15" RCP Lead Sp. Salvage Lid # 01111. (Plugging of RCP Lead to be incl. in inlet reinforcement)
- ② Construct Brick Manhole over existing 15" RCP with 60" 15" RCP Lead East. Use Parabolic Type pipe section @ end of 15" RCP Lead. See Detail Sht. (18)

**LEGEND**

- ▨ Remove Existing Asphalt
- New Construction
- Existing

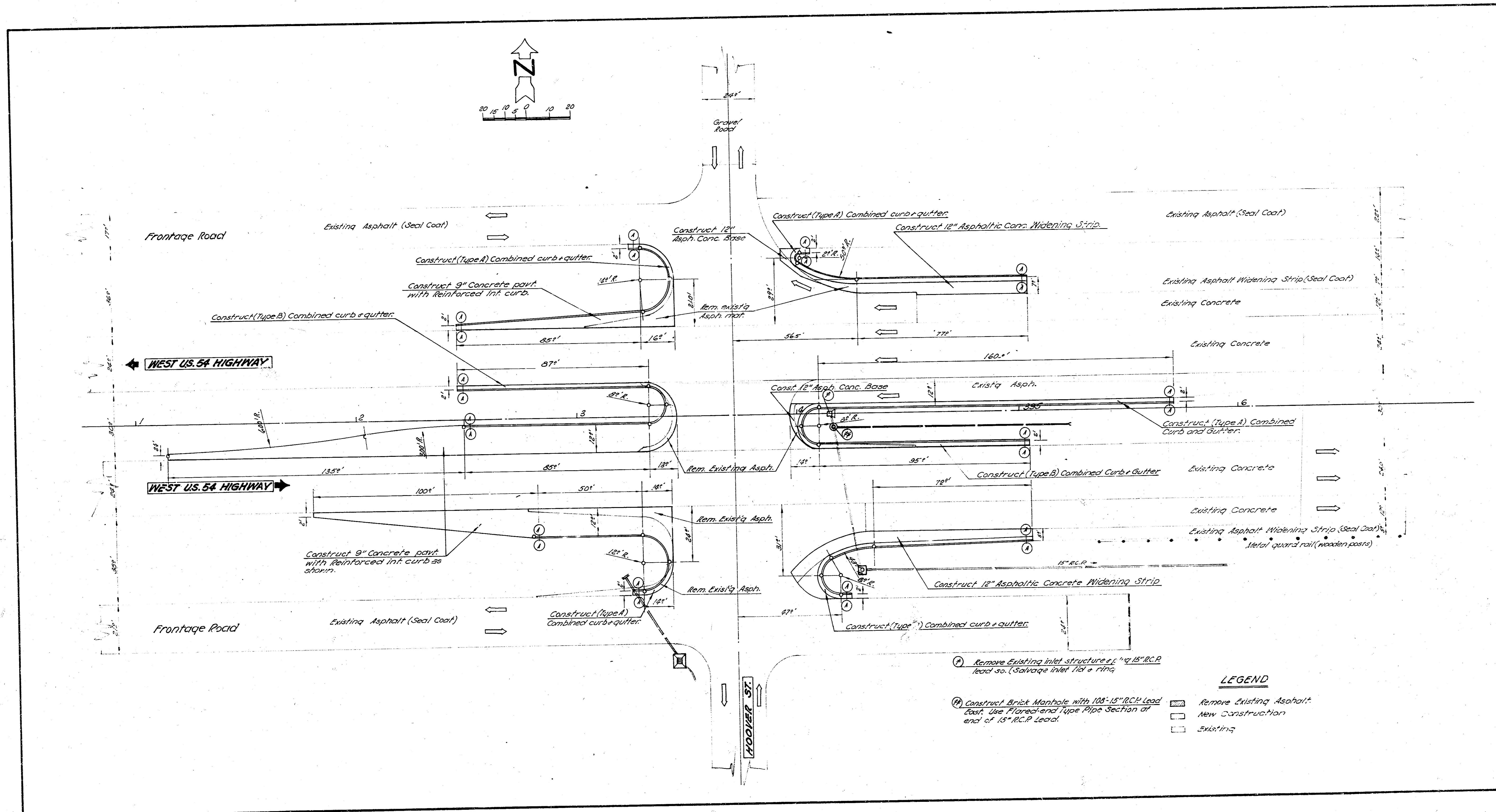
KELLOGG STREET (U.S. 54)  
 300ft west of W.L. Tyler Road to E.L. Emporia  
 Improve & Reimprove Certain Portions  
 City of Wichita, Kansas  
 B.E. Smith - City Engineer  
 Project No. C13-17 (city)  
 S-4-87 K-5126(2) (state) ②

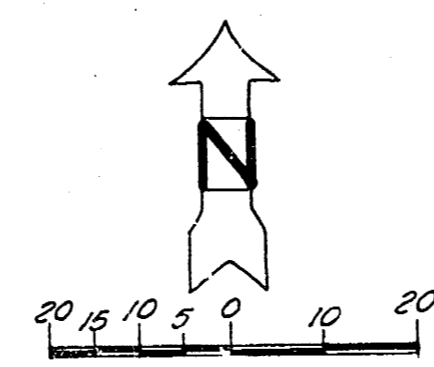




**LEGEND**

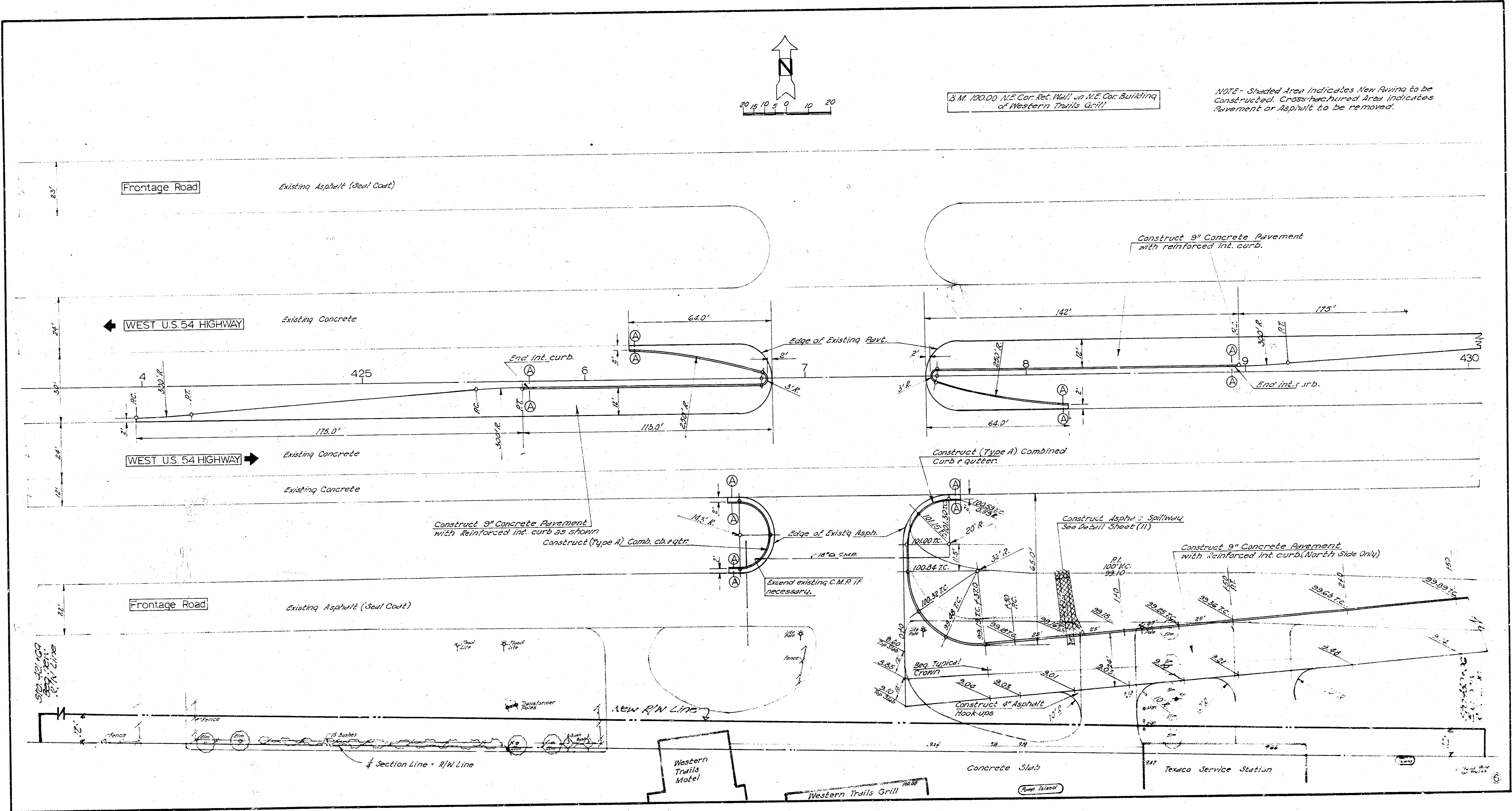
- Remove Existing Asphalt
- New Construction
- Existing



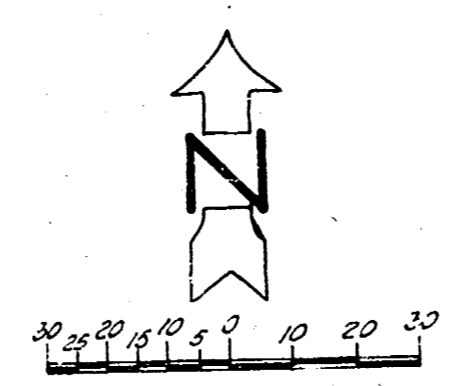


3 M. 100.00 N.E. Cor. Ret. Wall in N.E. Cor. Building of Western Trails Grill

NOTE - Shaded Area Indicates New Pavement to be Constructed. Cross-hatched Area Indicates Pavement or Asphalt to be removed.

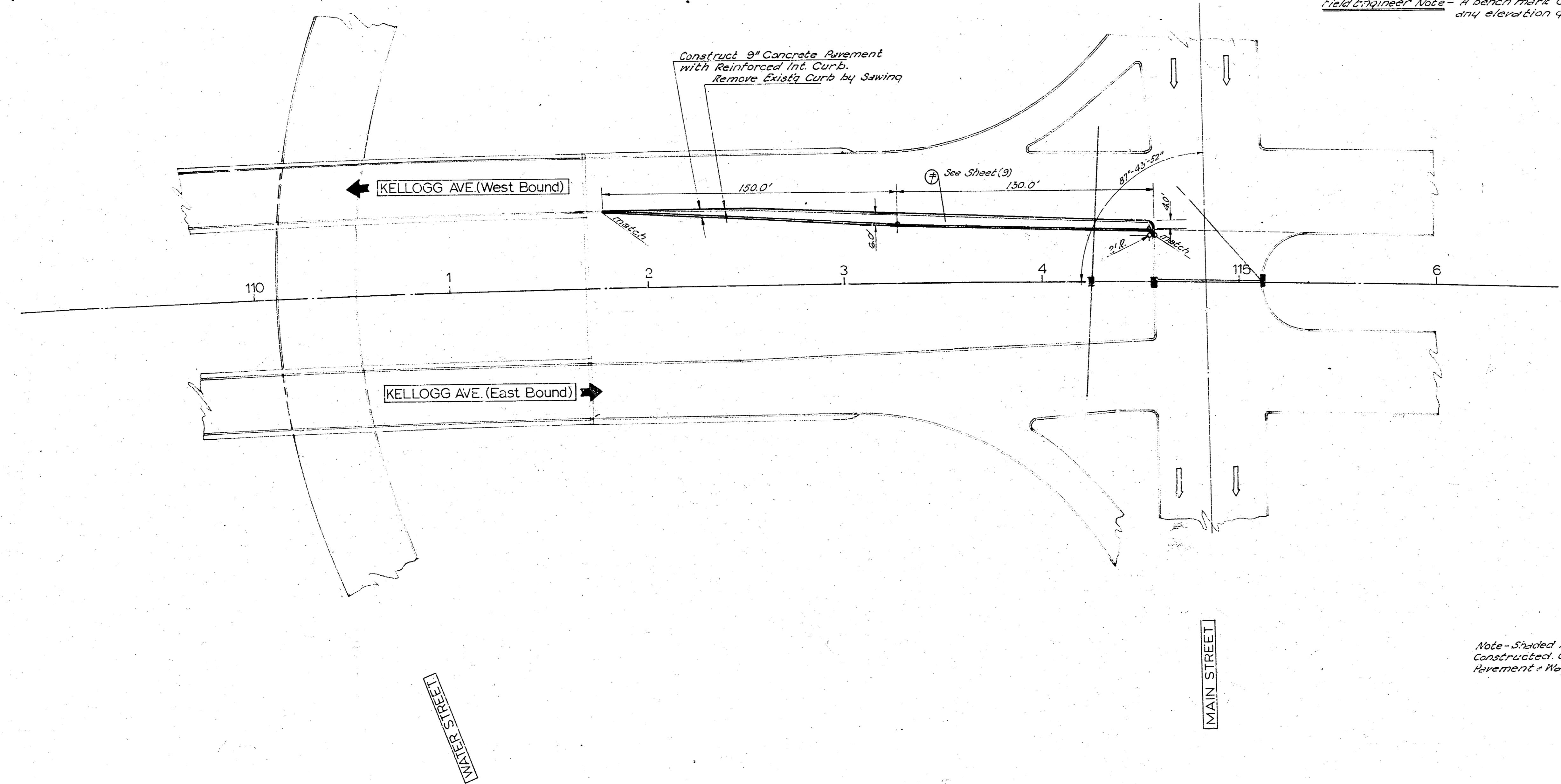






B.M. - 106.92' 2" Cut on curb, North Side Kellogg, 335' N. of Kellogg @ Michizis St. (State Hwy)  
B.M. - 111.83' 2" Bolt on top fire hydrant N.W. Cor. Kellogg & Main. (State Hwy)  
B.M. - 109.06' 3.32' Bolt top fire hydrant S.W. Cor. Kellogg & Poplar. (State Hwy)  
B.M. - 107.45' 1" 2" on line of Road with Trench, S.E. Corner, (C.A.W.)  
B.M. - 110.01' S.W. Cor. bottom conc. step Has # 708 So. Market. (C.A.W.)

Field Engineer Note - A bench mark Check should be run before any elevation grade stakes are set.



Note - Shaded Area indicates New Paving to be Constructed Cross-hatched Area indicates Pavement to be removed.







