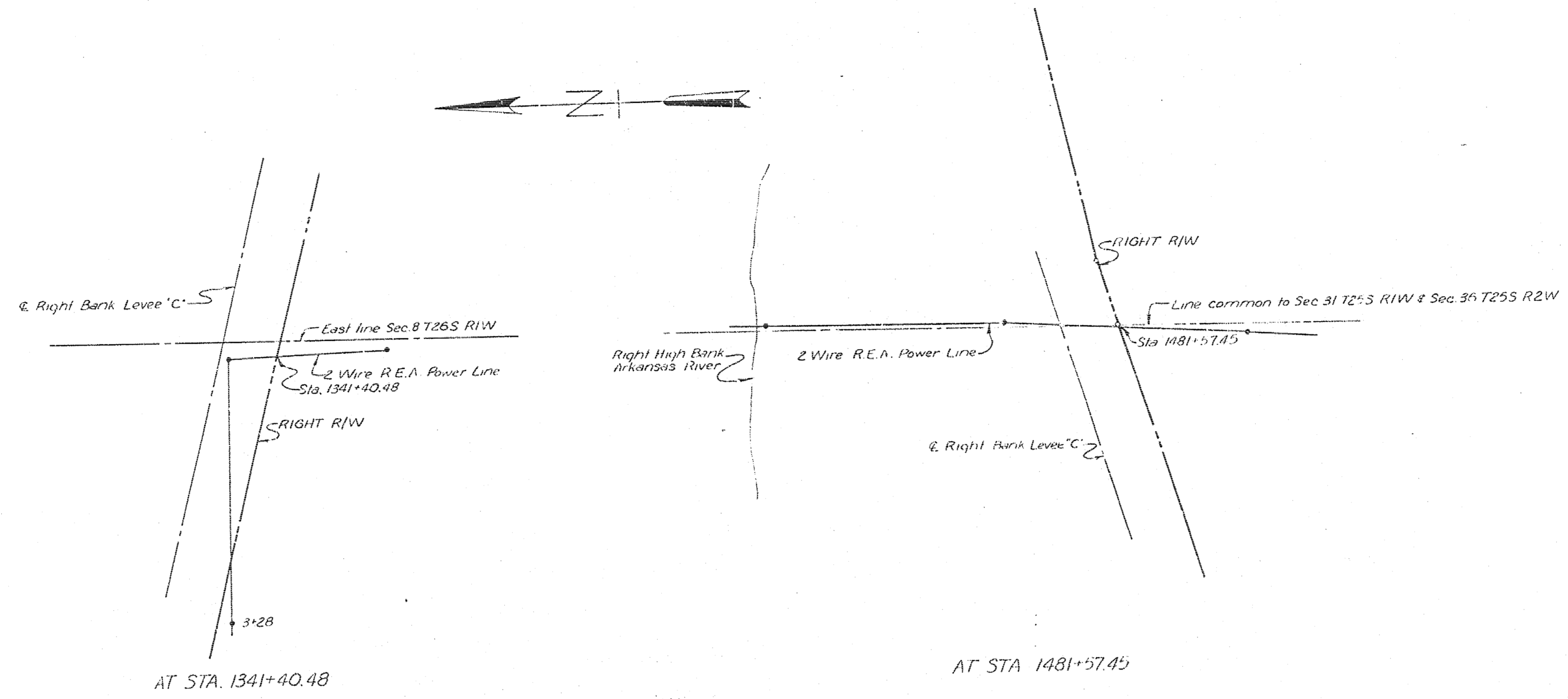
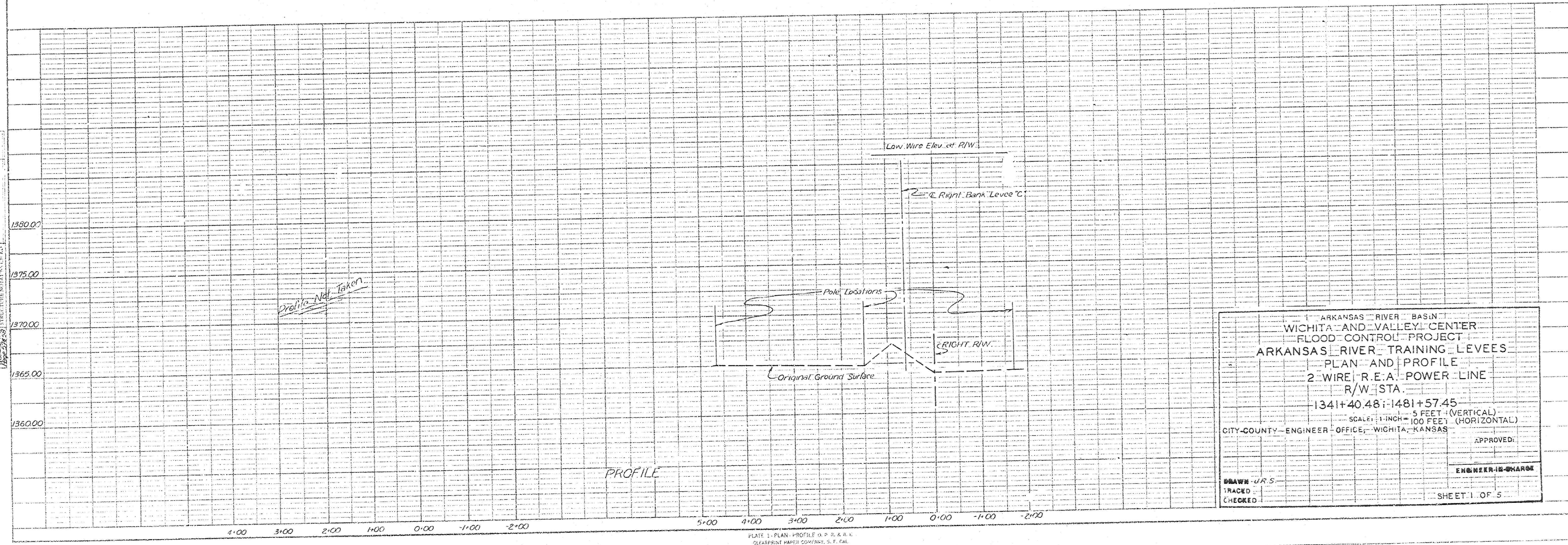


PLAN
 DATE: 9/28/54
 DRAWN BY: J. S. [unclear]
 CHECKED BY: [unclear]
 PROJECT: [unclear]



PLAN

PROFILE
 DATE: 9/28/54
 DRAWN BY: J. S. [unclear]
 CHECKED BY: [unclear]
 PROJECT: [unclear]



PROFILE

ARKANSAS RIVER BASIN
 WICHITA AND VALLEY CENTER
 FLOOD CONTROL PROJECT
 ARKANSAS RIVER TRAINING LEVEES
 PLAN AND PROFILE
 2 WIRE R.E.A. POWER LINE
 R/W STA.
 1341+40.48; 1481+57.45
 SCALE: 1" = 100 FEET (VERTICAL)
 1" = 100 FEET (HORIZONTAL)
 CITY-COUNTY ENGINEER OFFICE, WICHITA, KANSAS

APPROVED: _____
 ENGINEER-IN-CHARGE

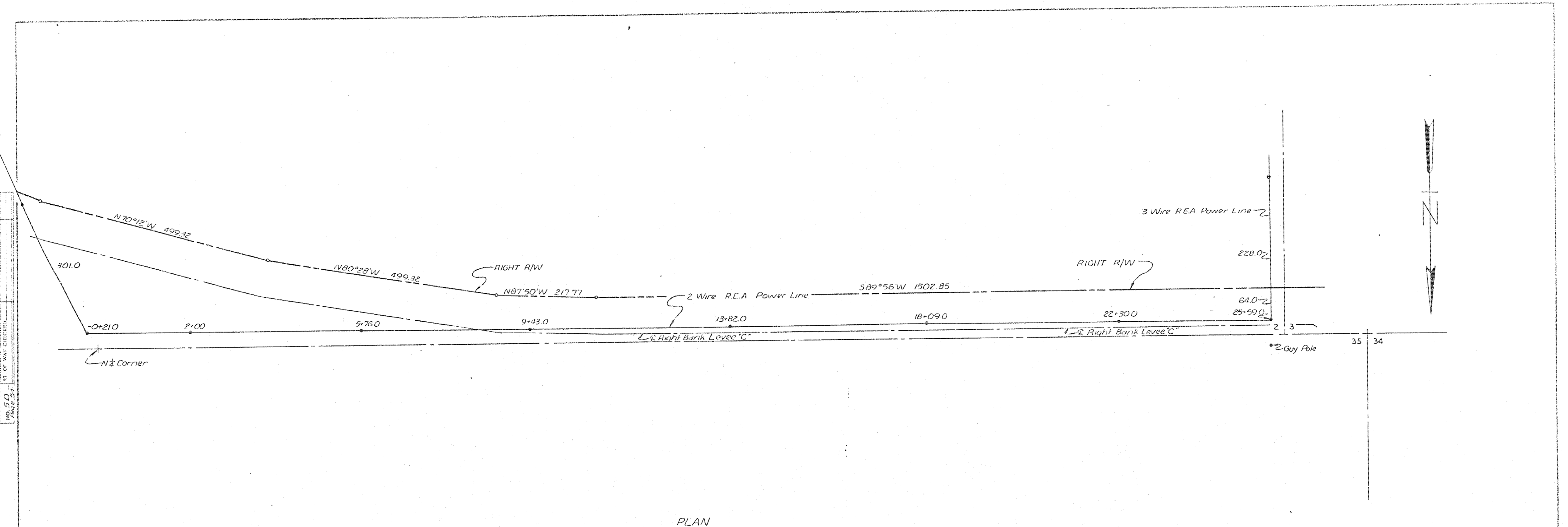
DRAWN: J. S. [unclear]
 TRACED: _____
 CHECKED: _____

SHEET 1 OF 5

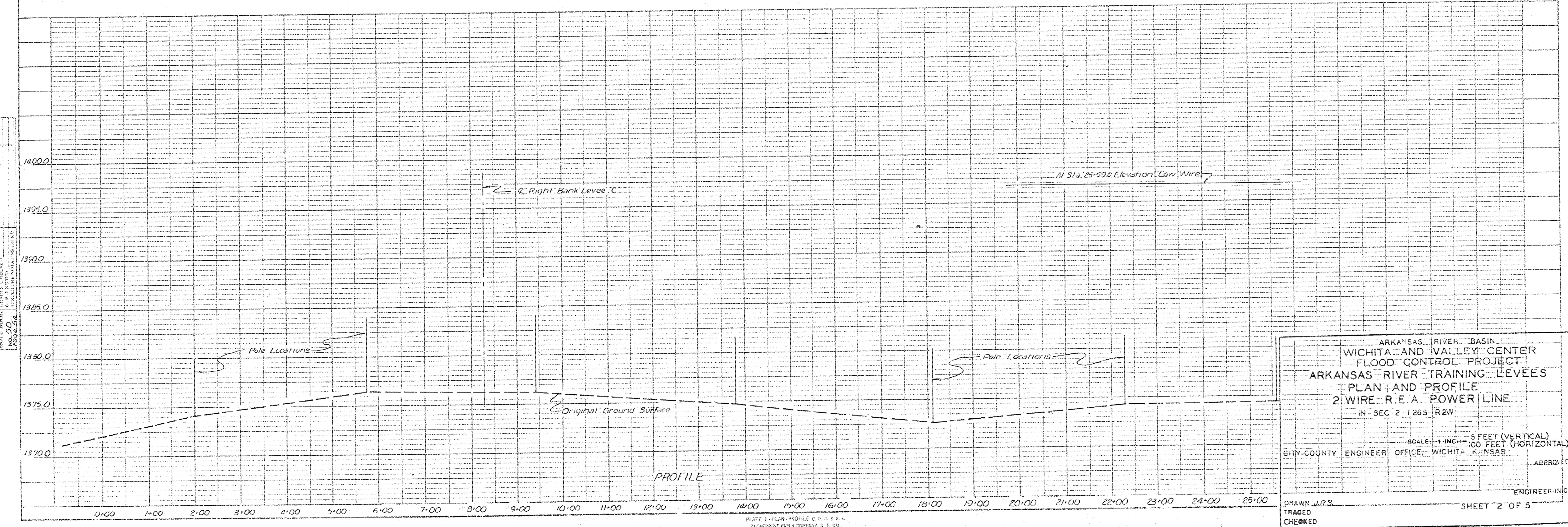
PLATE 1: PLAN AND PROFILE R.O.P.A.A.C.
 CLEARPRINT PAPER COMPANY, S.F. CALIF.
 NO. 14081

DATE: 5/28/23
 DRAWN BY: JRS
 CHECKED BY: JRS
 PROJECT: ARKANSAS RIVER BASIN WICHITA AND VALLEY CENTER FLOOD CONTROL PROJECT
 SHEET: 2 OF 5
 PLAN

DATE: 5/28/23
 DRAWN BY: JRS
 CHECKED BY: JRS
 PROJECT: ARKANSAS RIVER BASIN WICHITA AND VALLEY CENTER FLOOD CONTROL PROJECT
 SHEET: 2 OF 5
 PROFILE



PLAN



PROFILE

ARKANSAS RIVER BASIN
 WICHITA AND VALLEY CENTER
 FLOOD CONTROL PROJECT
 ARKANSAS RIVER TRAINING LEVEES
 PLAN AND PROFILE
 2 WIRE R.E.A. POWER LINE
 IN SEC 2 T26S R2W

SCALE: 1" = 100 FEET (HORIZONTAL)
 5 FEET (VERTICAL)

CITY-COUNTY ENGINEER OFFICE, WICHITA, KANSAS

ENGINEER: INGHAM

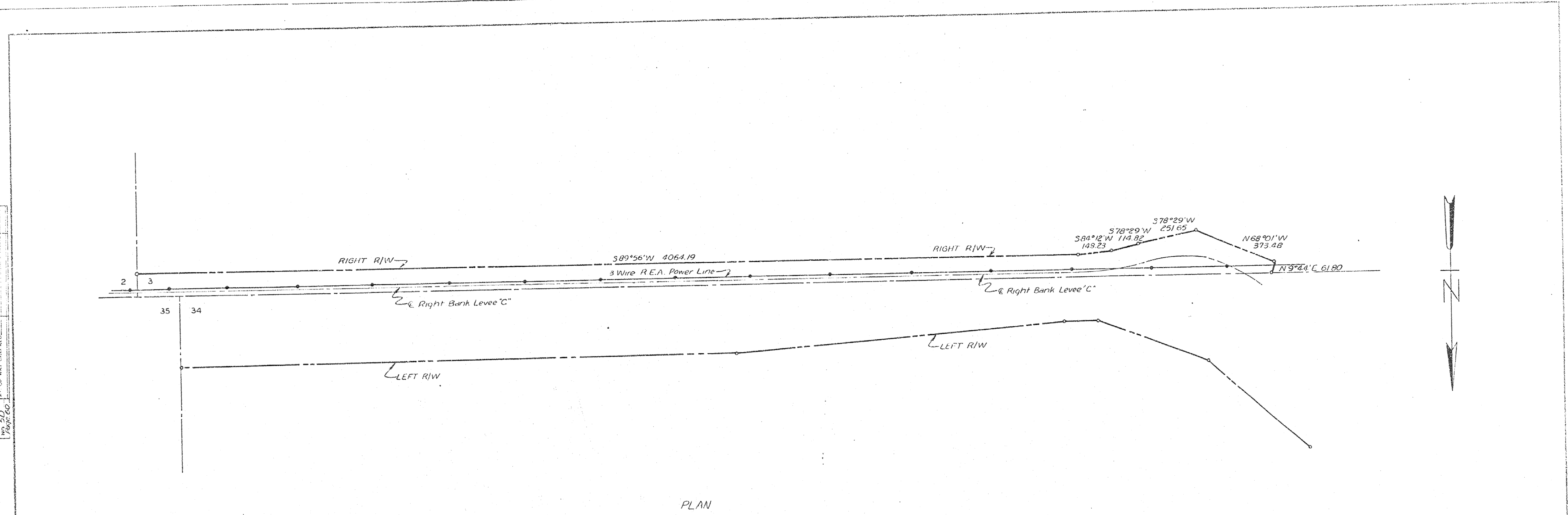
DRAWN: JRS
 TRACED
 CHECKED

SHEET 2 OF 5

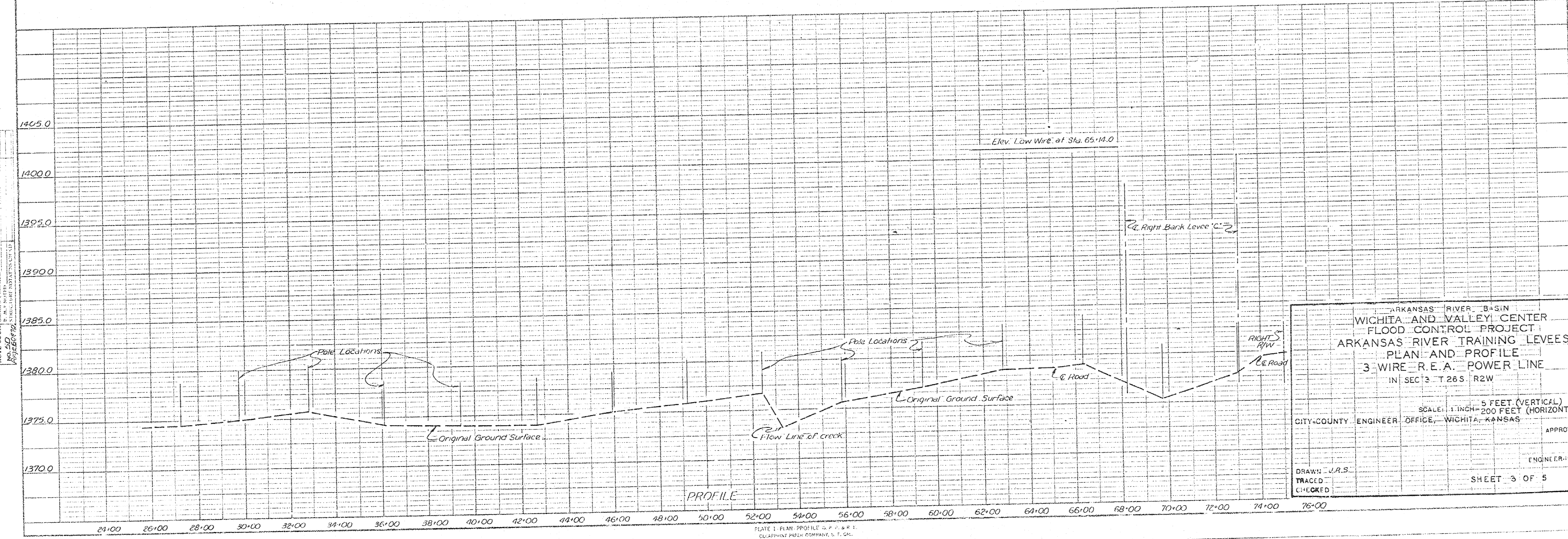
PLATE 1 - PLAN PROFILE 0. P. R. S. P. L.
 CLEARPRINT PAPER COMPANY, S. I. CH.
 No. 100013

PLAN
 DATE: 5/19/58
 DRAWN BY: J.R.S.
 CHECKED BY: J.R.S.
 TRACED BY: J.R.S.
 CITY-COUNTY ENGINEER OFFICE, WICHITA, KANSAS

PROFILE
 DATE: 5/19/58
 DRAWN BY: J.R.S.
 CHECKED BY: J.R.S.
 TRACED BY: J.R.S.
 CITY-COUNTY ENGINEER OFFICE, WICHITA, KANSAS



PLAN



PROFILE

ARKANSAS RIVER BASIN
 WICHITA AND VALLEY CENTER
 FLOOD CONTROL TRAINING LEVEES
 PLAN AND PROFILE
 3 WIRE R.E.A. POWER LINE
 IN SEC 3 T 26 S R 2W

SCALE: 1 INCH = 5 FEET (VERTICAL)
 1 INCH = 200 FEET (HORIZONTAL)

CITY-COUNTY ENGINEER OFFICE, WICHITA, KANSAS

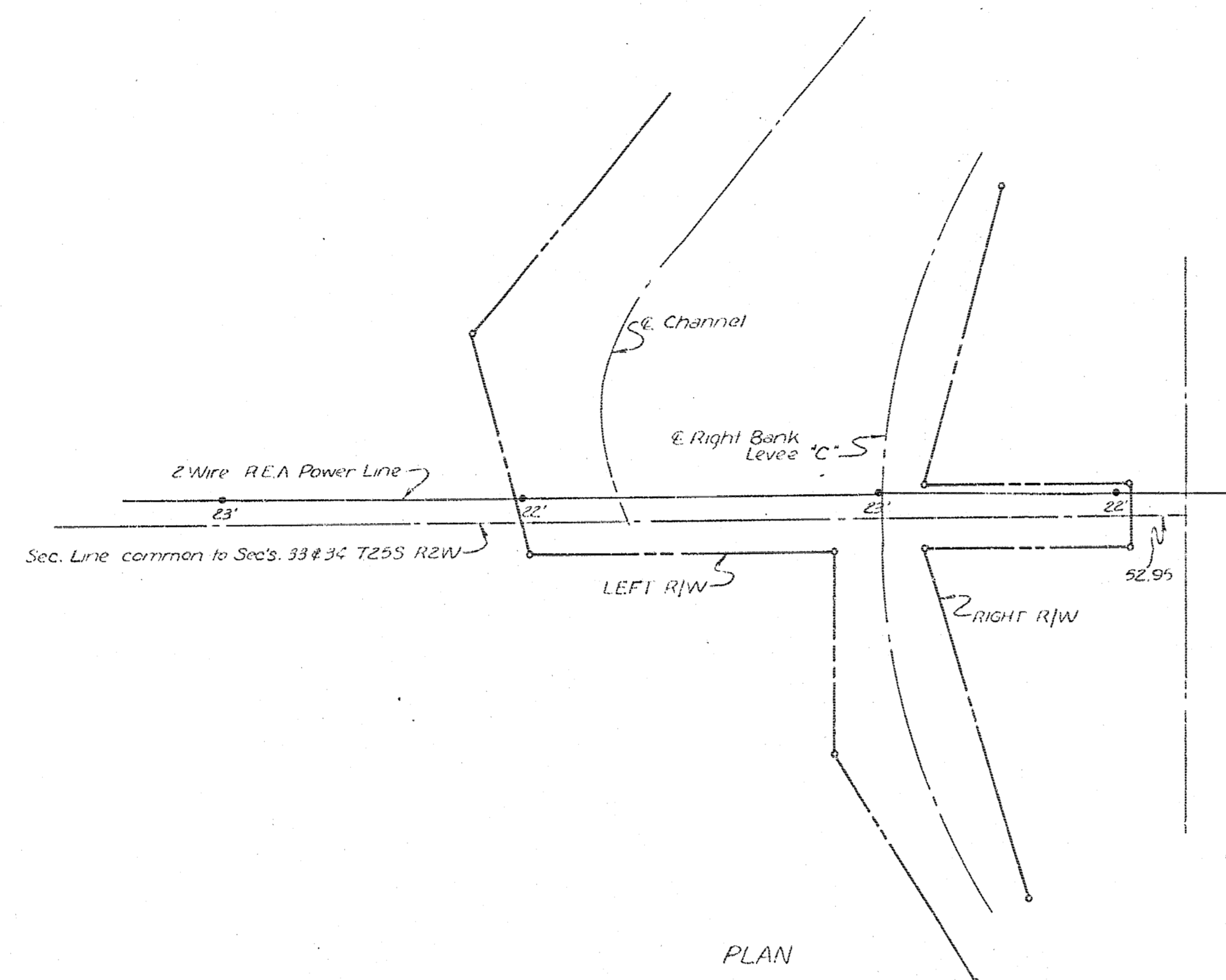
APPROVED: _____
 ENGINEER-IN-CHARGE

DRAWN: J.R.S.
 TRACED: J.R.S.
 CHECKED: J.R.S.

SHEET 3 OF 5

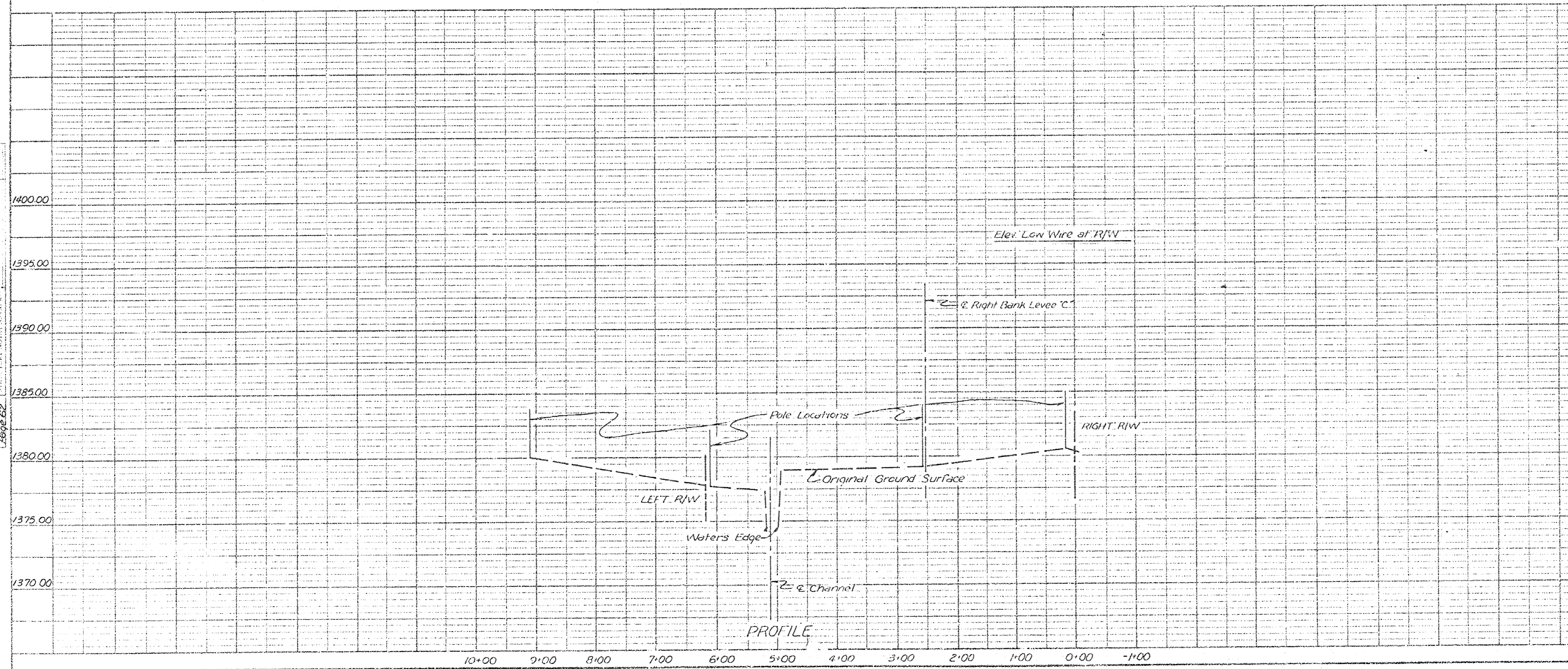
PLATE 1. PLAN, PROFILE, & P. & E. 1.
 CLEARPRINT PAPER, FORM NO. 1, T. 54.
 REV. 10/26/57

PLAN
 DATE: 5/26/20
 DRAWN BY: JPS
 CHECKED BY: JPS



PLAN

PROFILE
 DATE: 5/26/20
 DRAWN BY: JPS
 CHECKED BY: JPS

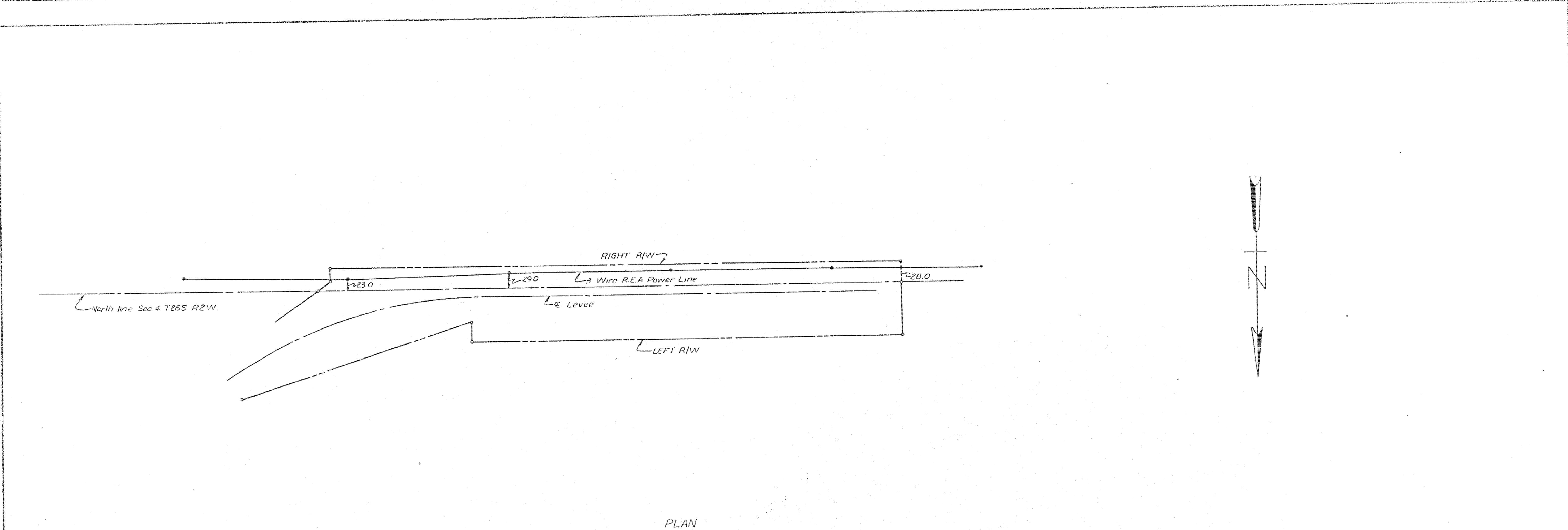


PROFILE

ARKANSAS RIVER BASIN
 WICHITA AND VALLEY CENTER
 FLOOD CONTROL PROJECT
 ARKANSAS RIVER TRAINING LEVEES
 PLAN AND PROFILE
 2 WIRE R.E.A. POWER LINE
 IN SEC. 34 T2S5 R2W
 SCALE: 1" = 100 FEET (HORIZONTAL)
 CITY-COUNTY ENGINEER OFFICE, WICHITA, KANSAS
 APPROVED: _____
 ENGINEER-IN-CHARGE
 DRAWN: JPS
 TRACED: _____
 CHECKED: _____
 SHEET 4 OF 5

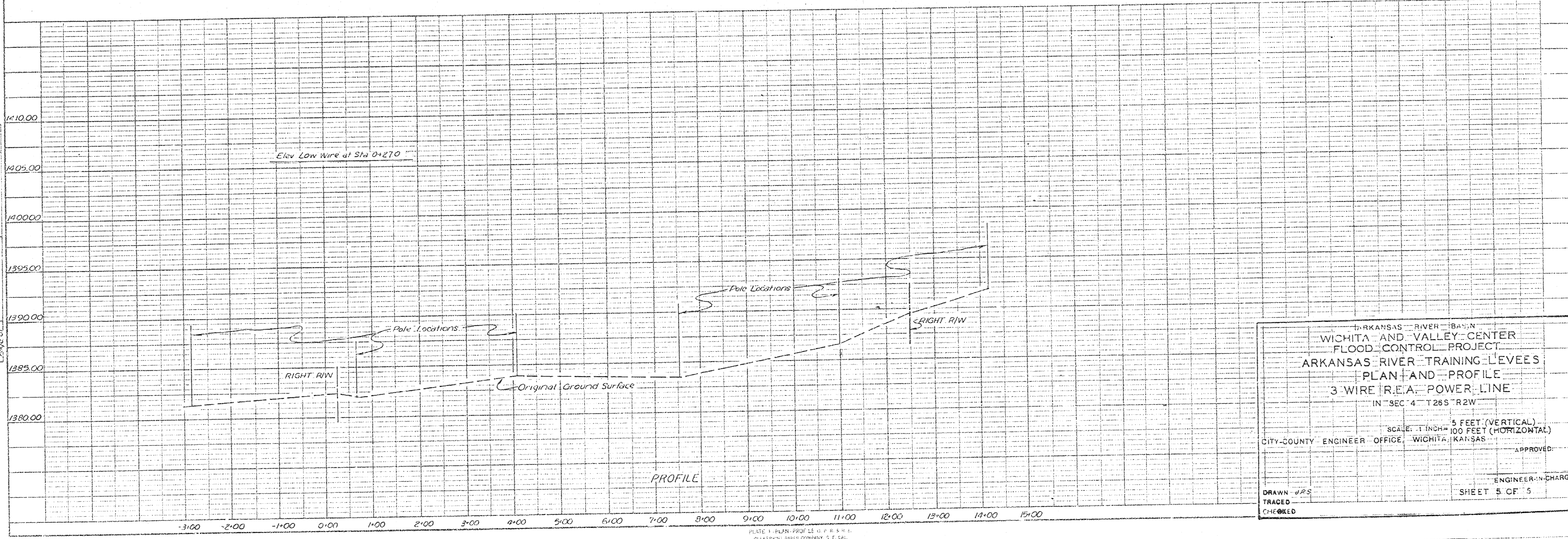
PLATE 1 - PLAN, PROFILE 11" x 17" x 1/8" C.
 REPRODUCED FROM DRAWING NO. 110001-1

DATE: 5/28/28
 DRAWN BY: [Signature]
 CHECKED BY: [Signature]
 PROJECT: [Signature]
 SHEET: 5 OF 5



PLAN

DATE: 5/28/28
 DRAWN BY: [Signature]
 CHECKED BY: [Signature]
 PROJECT: [Signature]
 SHEET: 5 OF 5



PROFILE

ARKANSAS RIVER BASIN
 WICHITA AND VALLEY CENTER
 FLOOD CONTROL PROJECT
 ARKANSAS RIVER TRAINING LEVEES
 PLAN AND PROFILE
 3 WIRE R.E.A. POWER LINE
 IN SEC 4 T26S R2W

SCALE: 1/4" = 100 FEET (HORIZONTAL)
 3 FEET (VERTICAL)

CITY-COUNTY ENGINEER OFFICE, WICHITA, KANSAS

APPROVED: [Signature]
 ENGINEER-IN-CHARGE

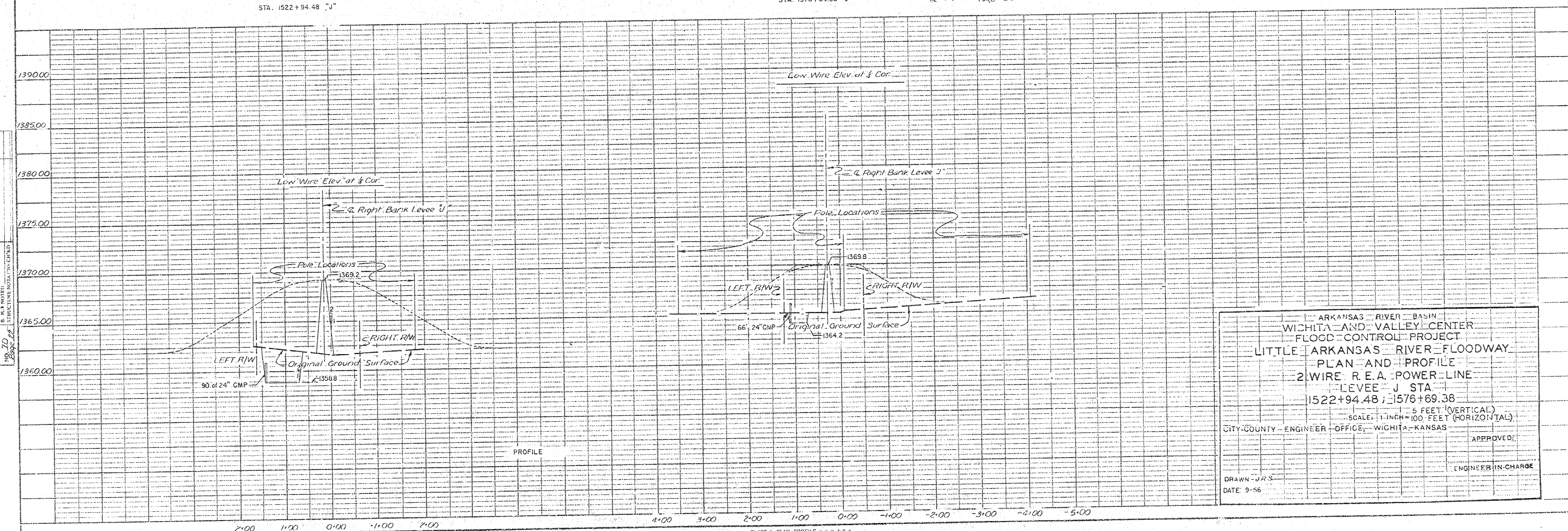
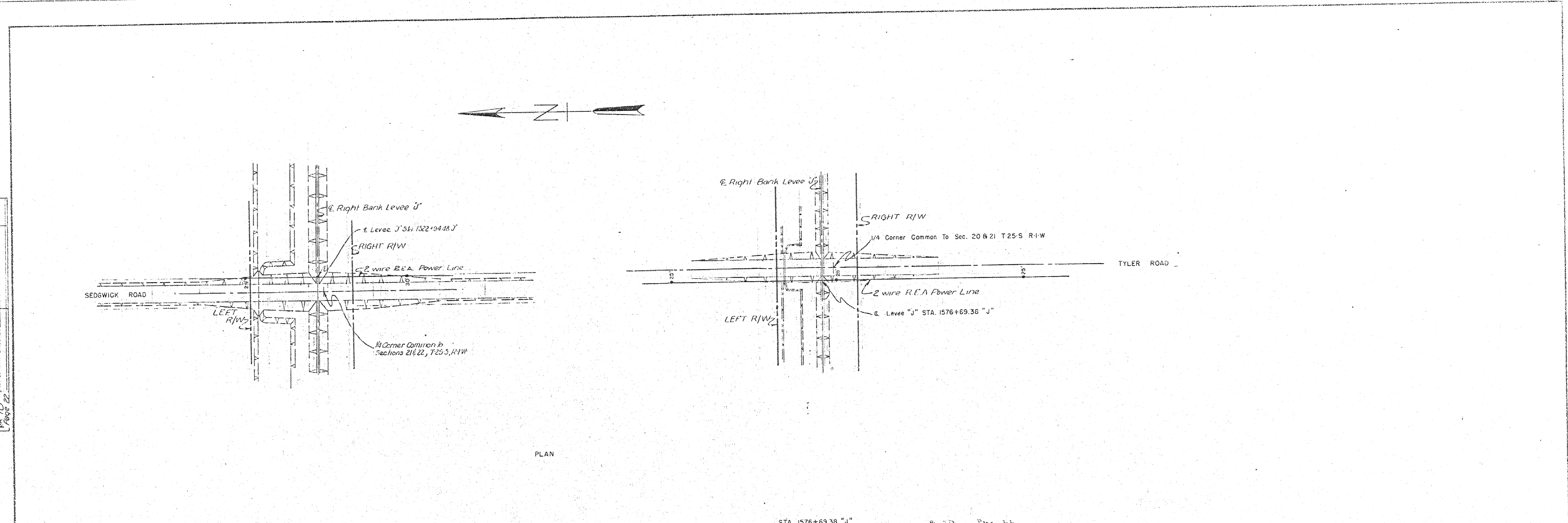
DRAWN: J.P.S.
 TRACED: [Signature]
 CHECKED: [Signature]

SHEET 5 OF 5

PLATE 1, PLAN, 1928, U.S. GEOLOGICAL SURVEY, WASHINGTON, D.C.

DATE 9-28-56
 DRAWN BY J.M.S.
 CHECKED BY J.M.S.
 APPROVED BY J.M.S.
 PROJECT NO. 1576-69.38
 SHEET NO. 22

PROFILE
 DRAWN BY J.M.S.
 CHECKED BY J.M.S.
 APPROVED BY J.M.S.
 PROJECT NO. 1576-69.38
 SHEET NO. 22



ARKANSAS RIVER BASIN
 WICHITA AND VALLEY CENTER
 FLOOD CONTROL PROJECT
 LITTLE ARKANSAS RIVER FLOODWAY
 PLAN AND PROFILE
 2 WIRE R.E.A. POWER LINE
 LEVEE - J STA.
 1522+94.48 ; 1576+69.38
 SCALE: 1 INCH = 5 FEET (VERTICAL)
 1 INCH = 100 FEET (HORIZONTAL)
 CITY-COUNTY ENGINEER OFFICE, WICHITA, KANSAS
 APPROVED: _____
 ENGINEER IN CHARGE
 DRAWN - J.M.S.
 DATE 9-56