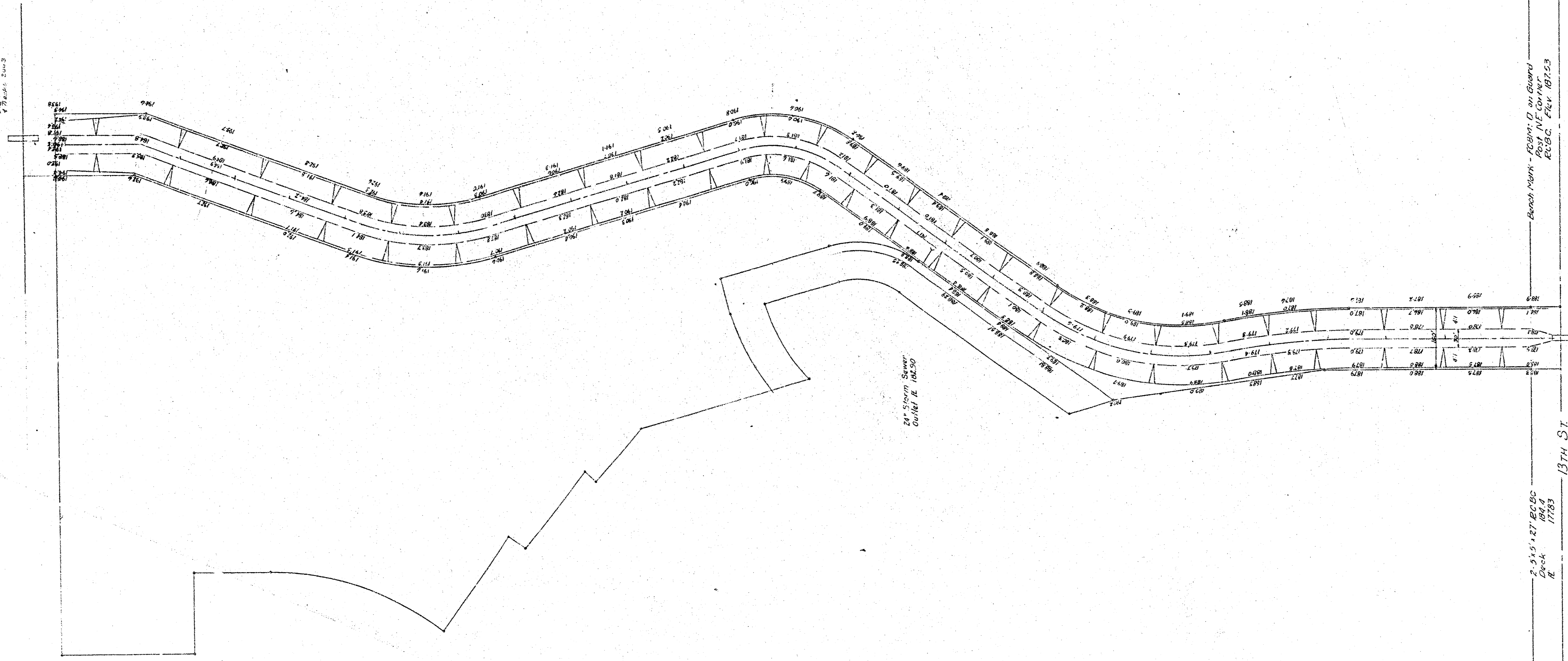


2.511.127 82505
2.511.127 82505
2.511.127 82505



2.511.127 82505
2.511.127 82505

CROSS SECTIONS - AS BUILT
McLEWEN 9TH ADDITION DRAINAGE
Scale 1"=100'
Sheet 1 of 2

Branch Point - Point D on drawing
Elev. 11.12
Elev. 11.12

2.511.127 82505
2.511.127 82505
13TH ST

WEST BRANCH
GYP CREEK