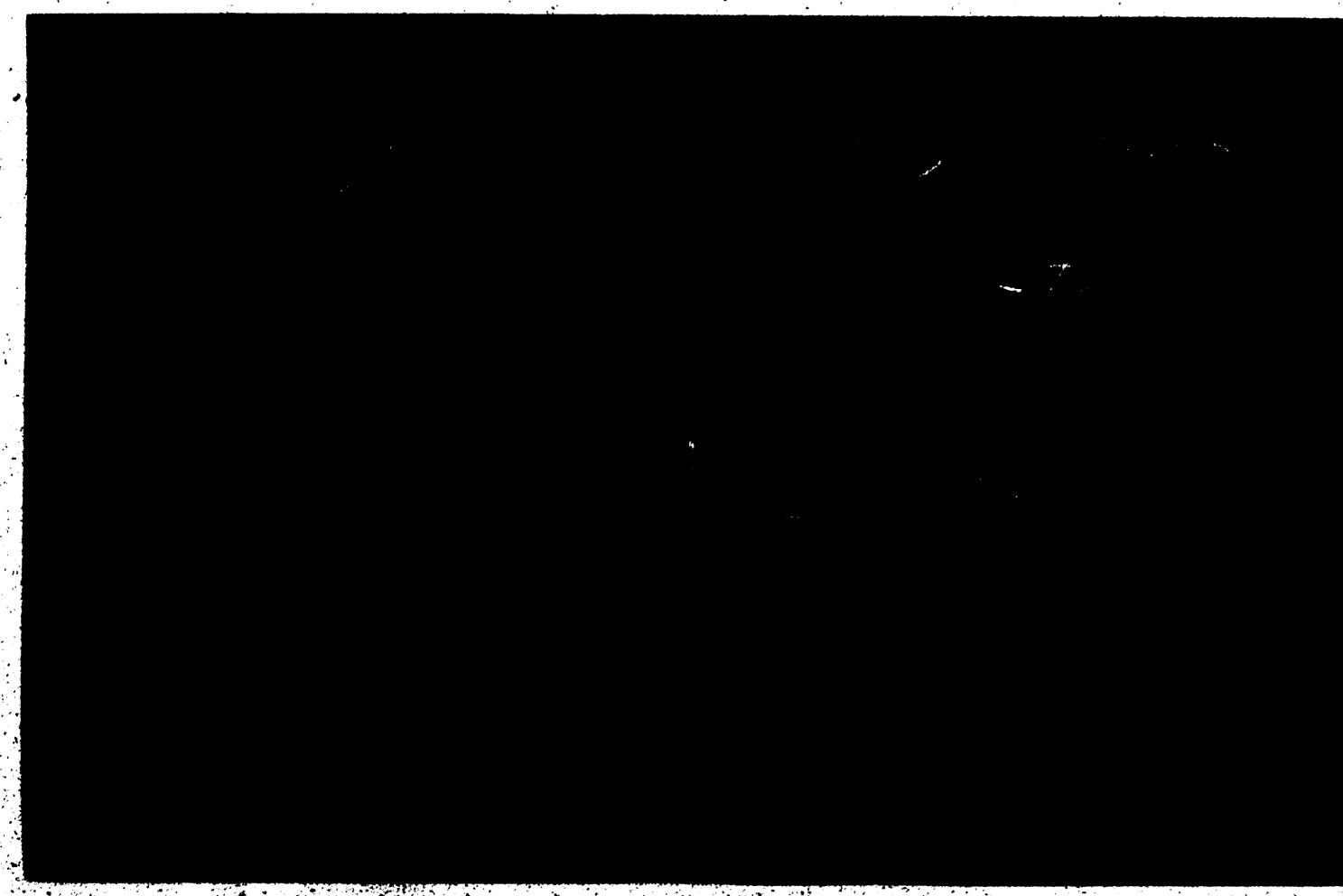
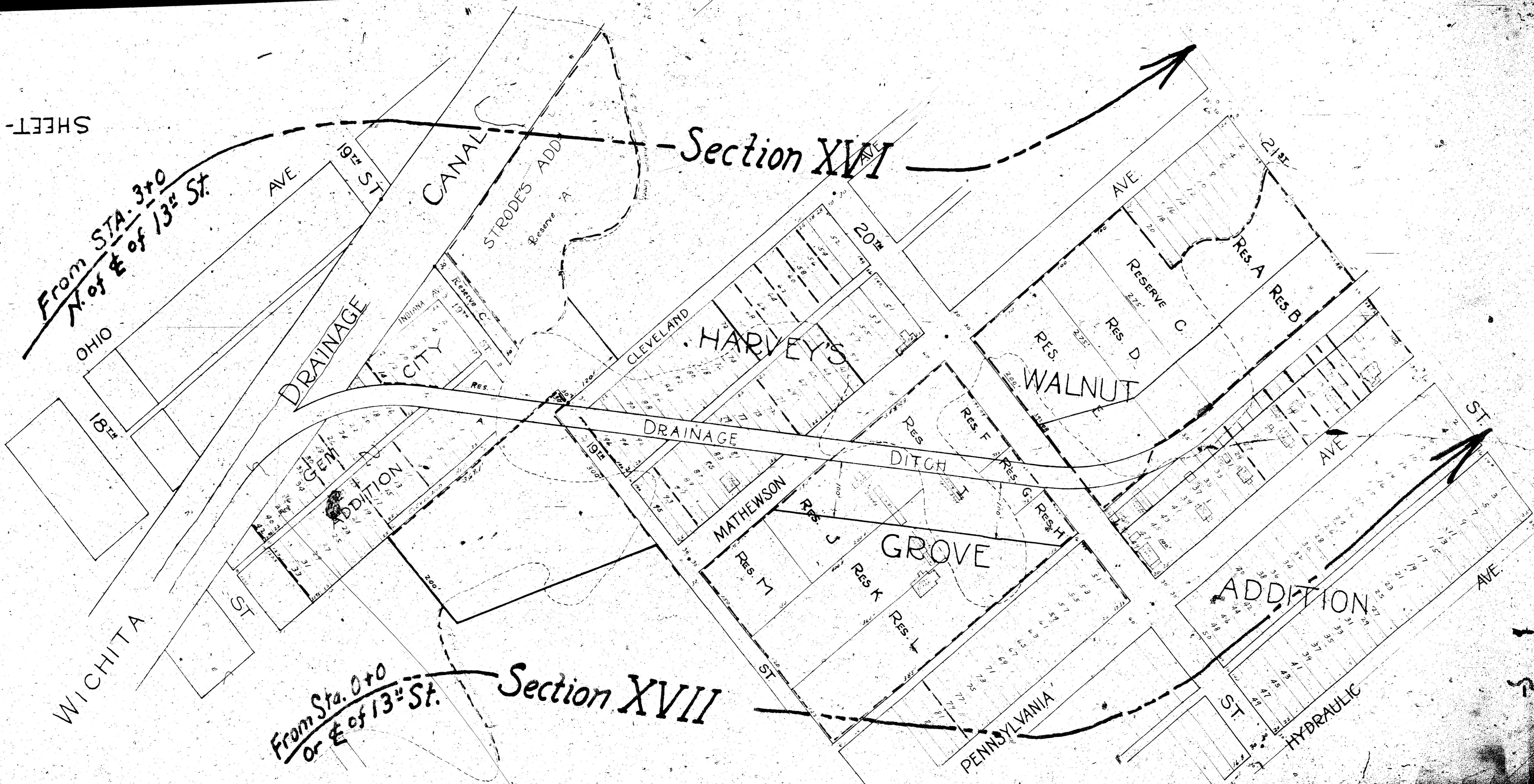
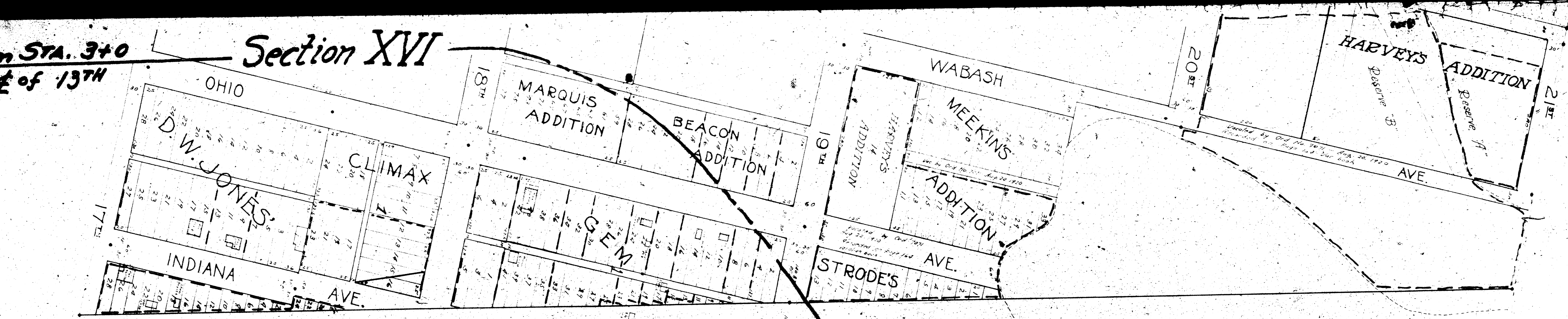


SHEET-1



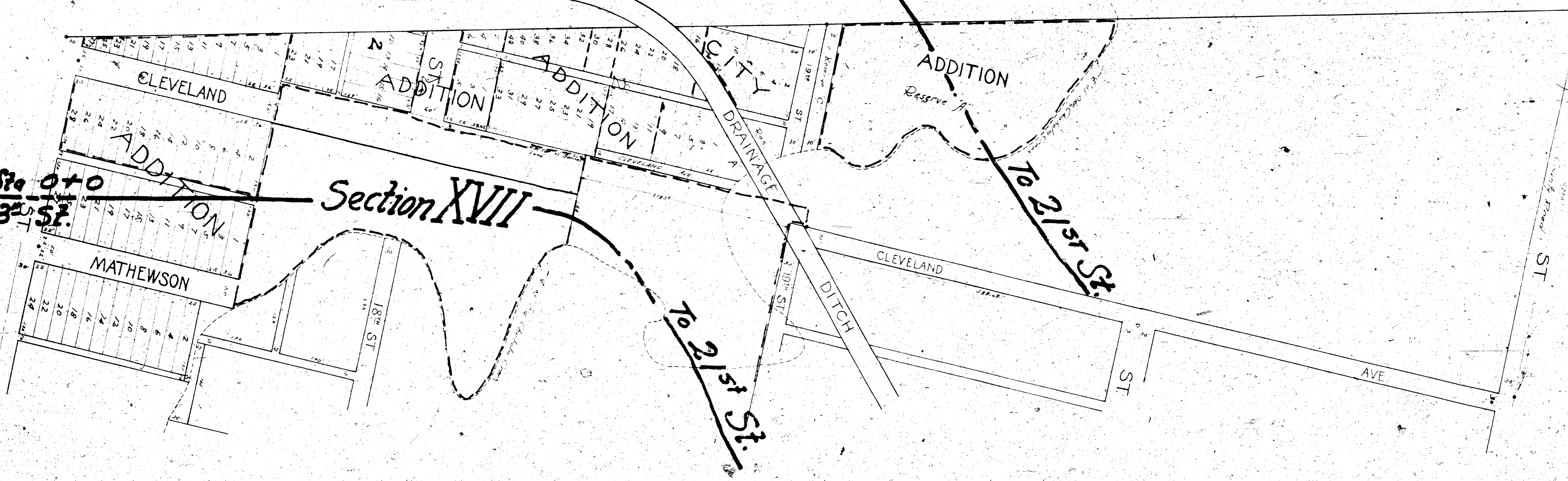
From STA. 3+0
N. of E of 13TH
SHEET-2

Section XVI



From Sta 0+0
or E 13th St.

Section XVII



From Sta 62+75
N. of N.L. of Douglas.

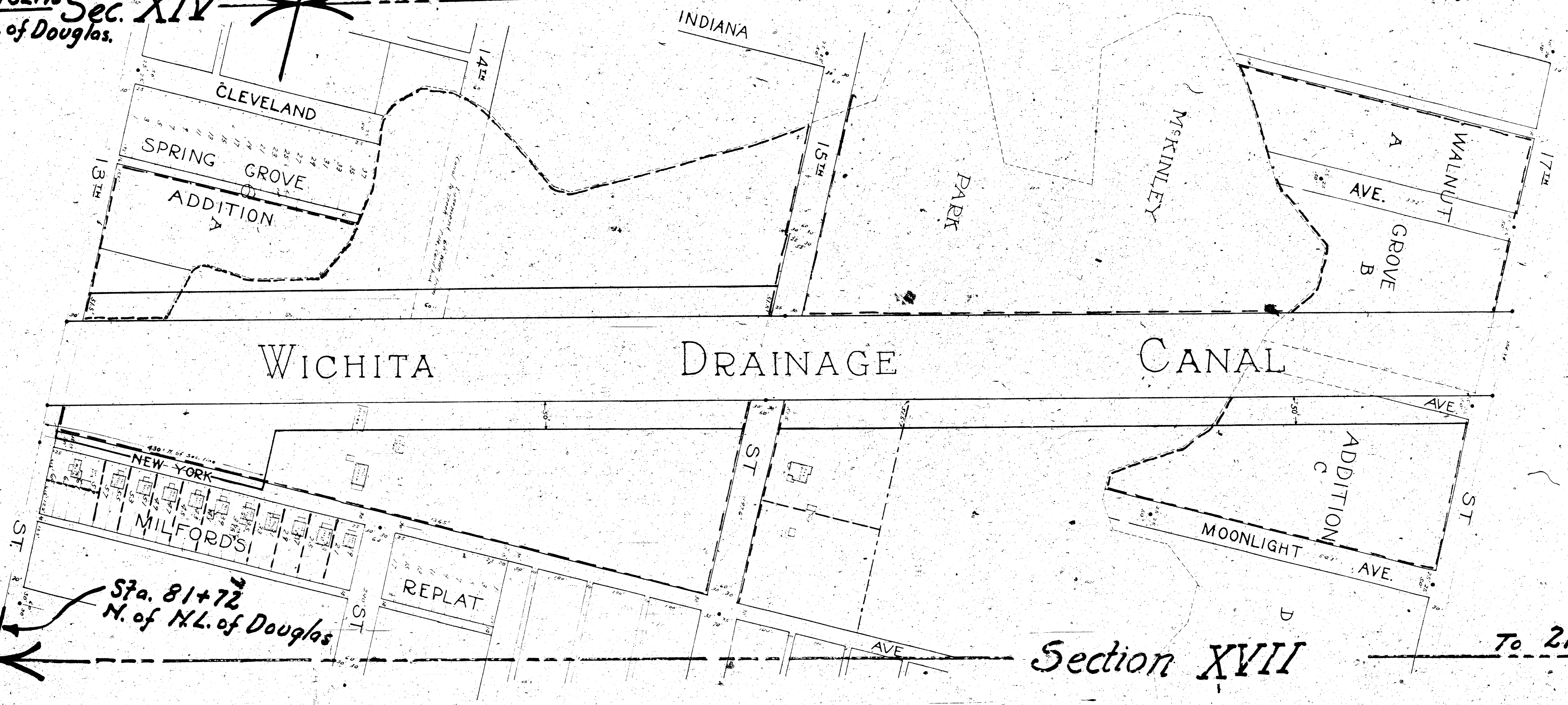
Sec. XIV

Sta. 3+0
N. of E of 13th St.

Section XVI

To 21st St.

SHEET-3



WICHITA

DRAINAGE

CANAL

Sta. 81+72
N. of N.L. of Douglas

Section XVII

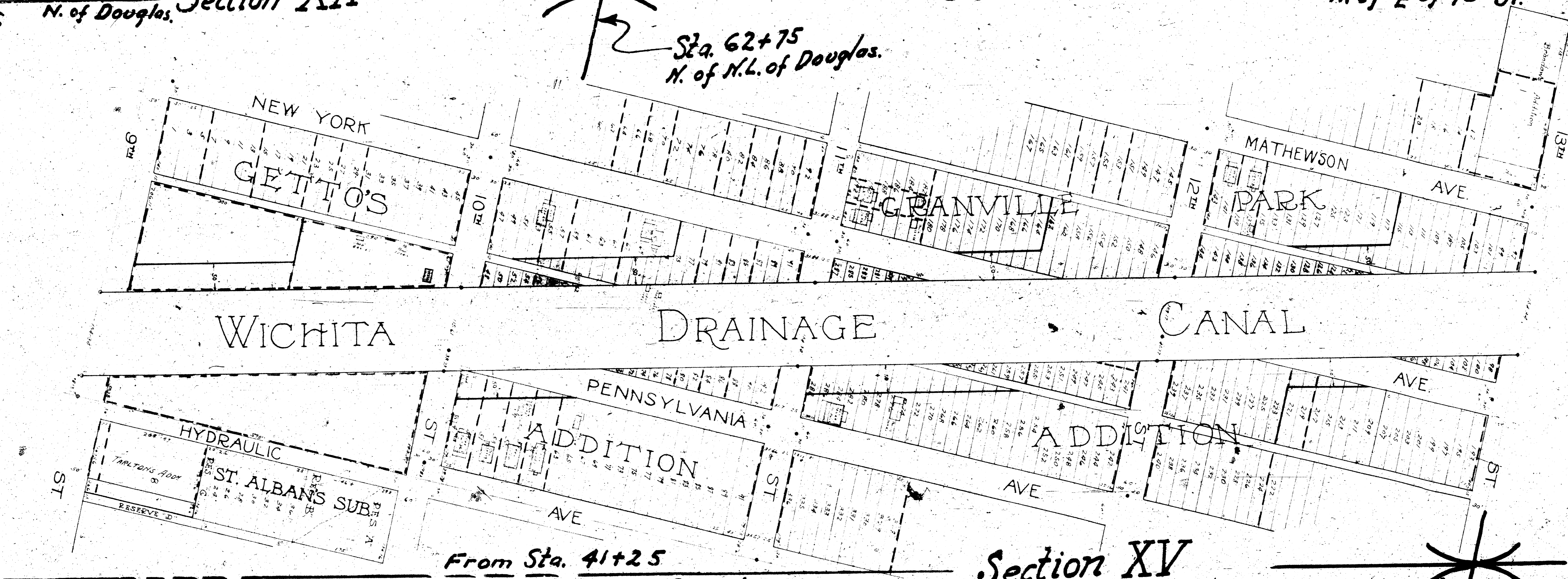
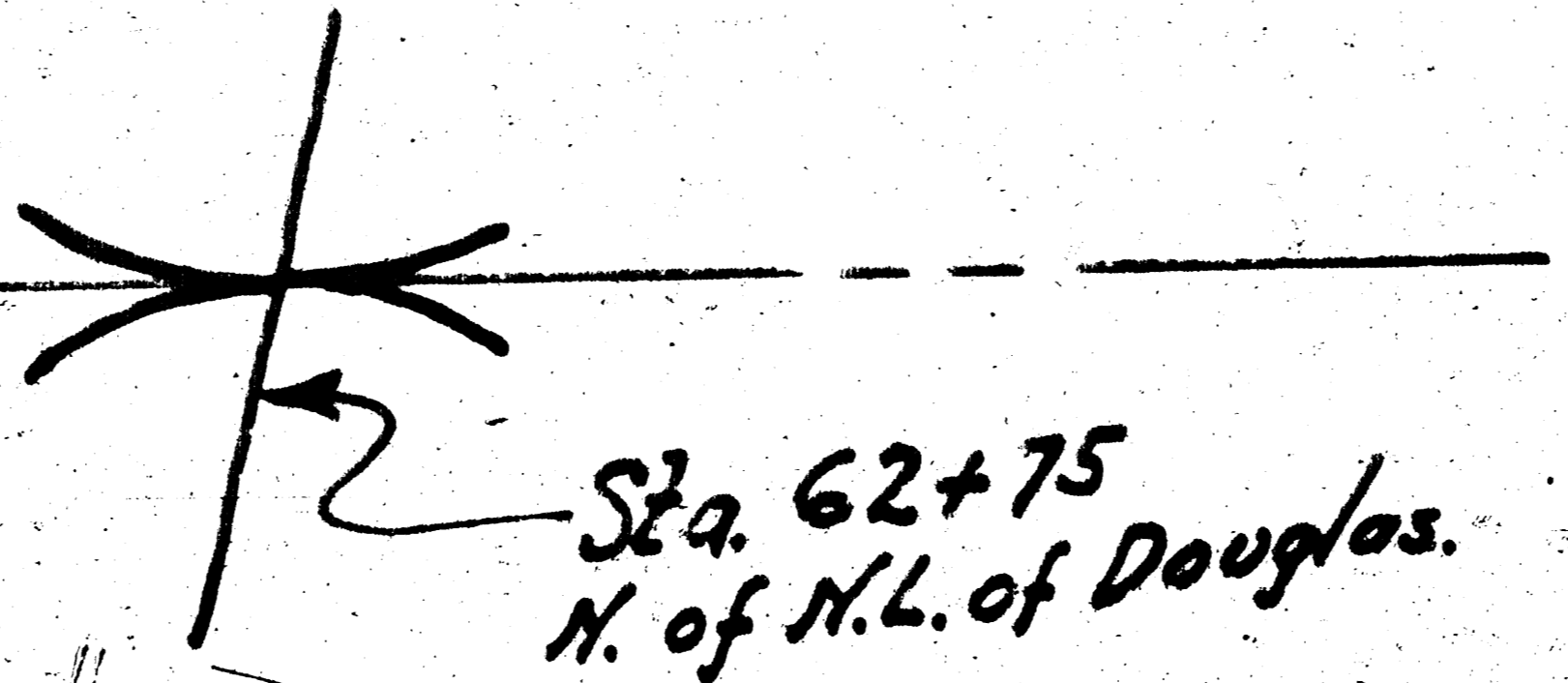
To 21st St.

SHEET-4

From Sta. 35+0
N. of Douglas. Section XII

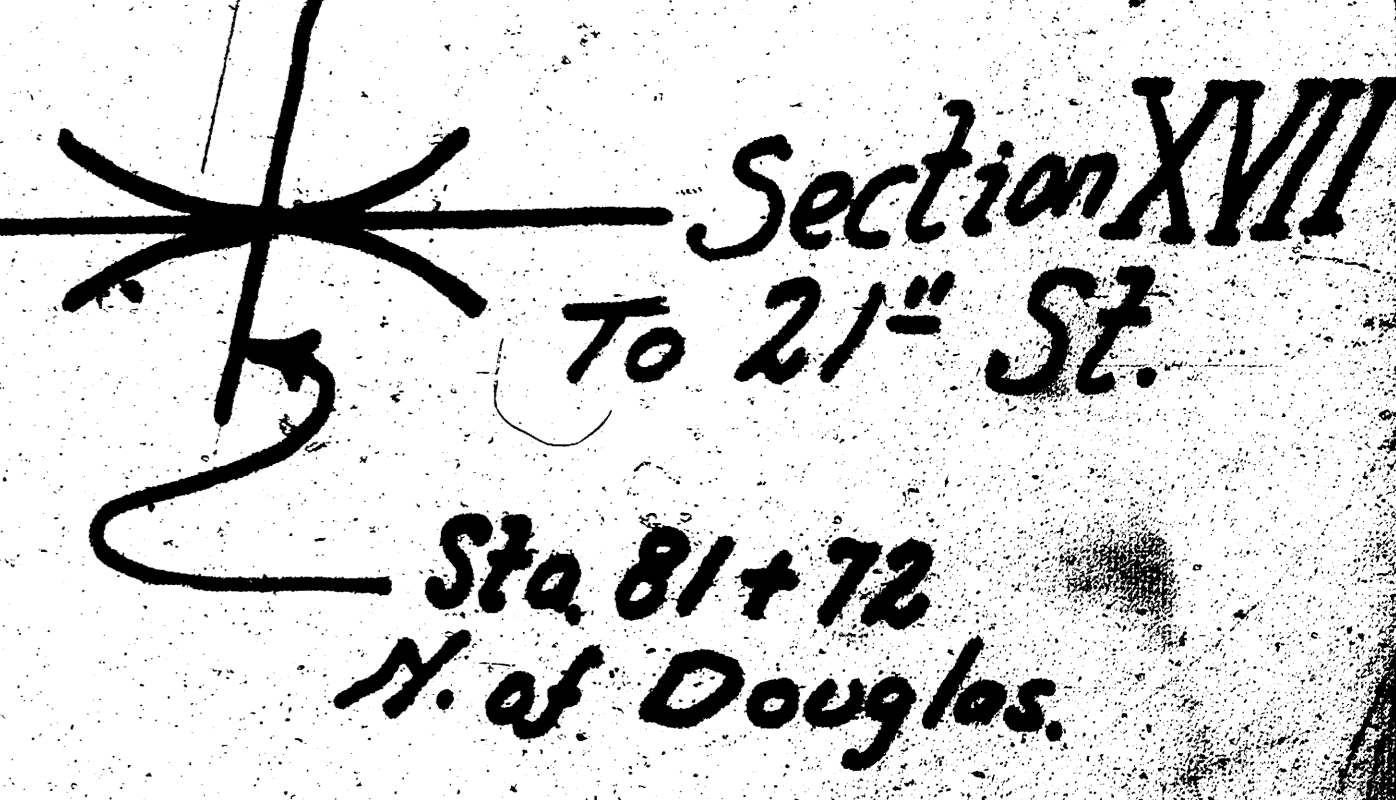
Section XIV

To Sta. 3+0
N. of $\frac{1}{2}$ of 13th St.



From Sta. 41+25
N. of N.L. of Douglas

Section XV



Section XVII
To 21st St.

From N.L. of
Douglas

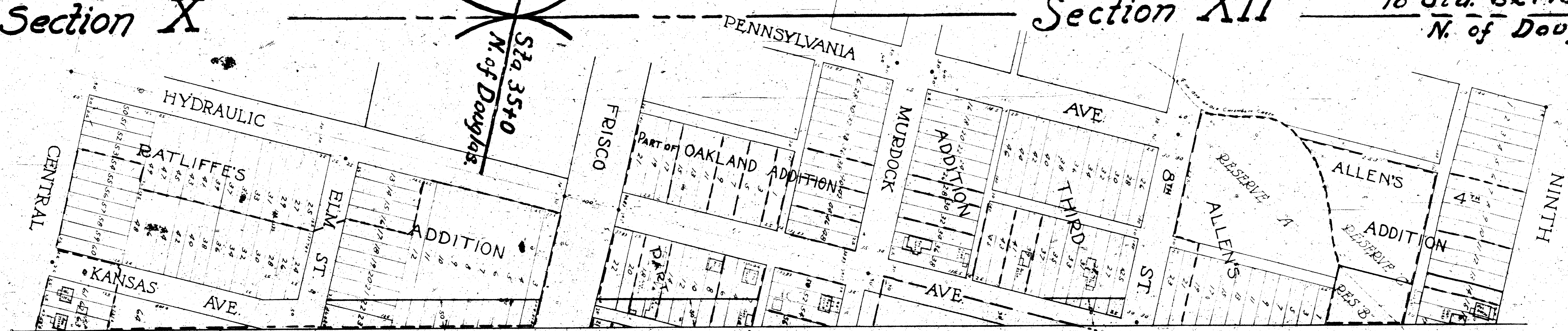
Section X

SHEET-5

Sta. 35+0
N. of Douglas

Section XII

To Sta. 62+75
N. of Douglas



WICHITA DRAINAGE CANAL

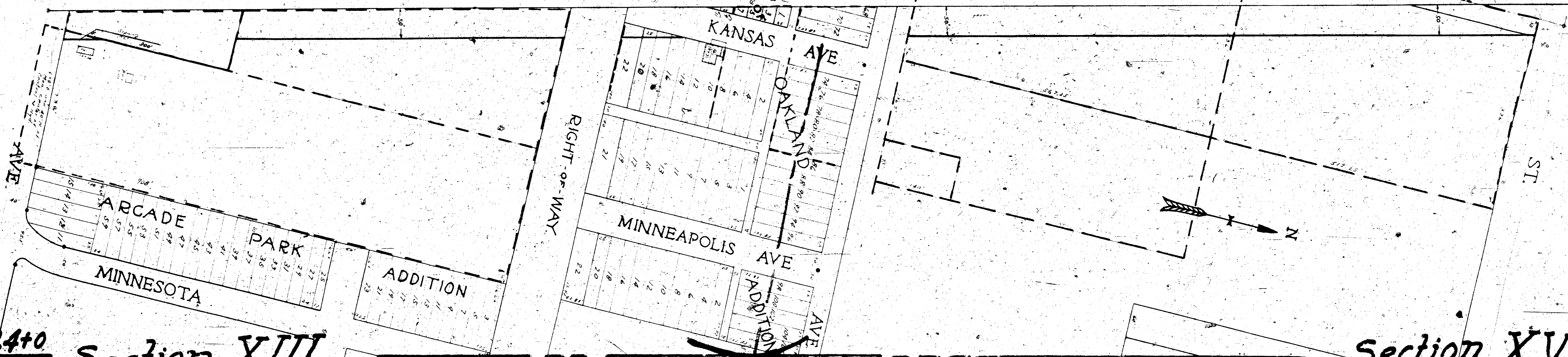
From Sta. 24+0
N. of Douglas

Section XIII

Sta. 41+25 N. of Douglas

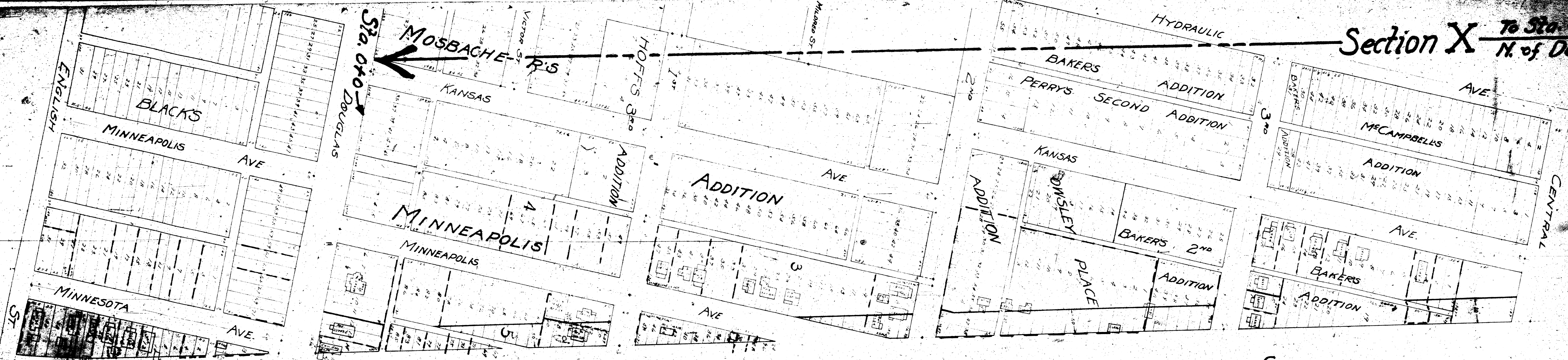
Section XV

To Sta. 81+72
N. of N.L. of Douglas



SHEET-

Section X To Sta. 3570 N. of Douglas

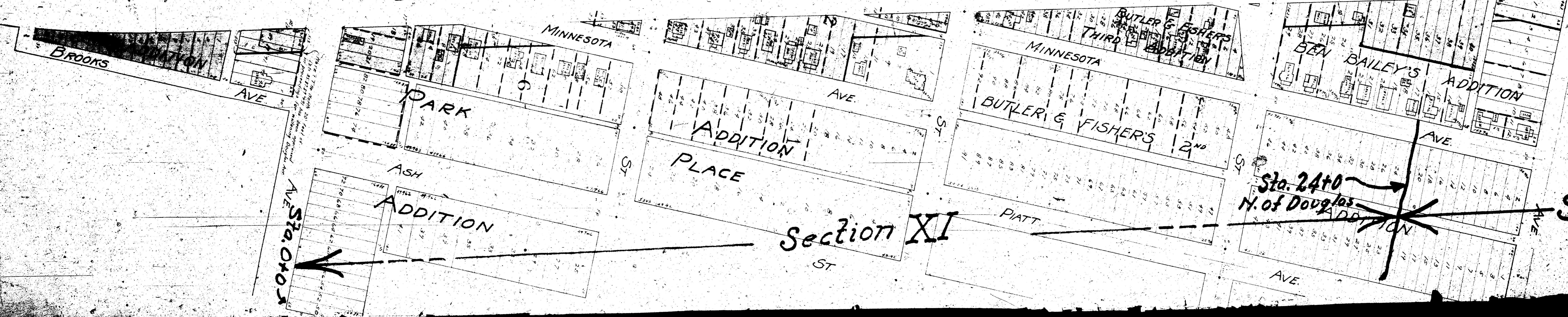


DRAINAGE

CANAL

Section XI

Sec. XII To Sta. 4125 N. of Douglas



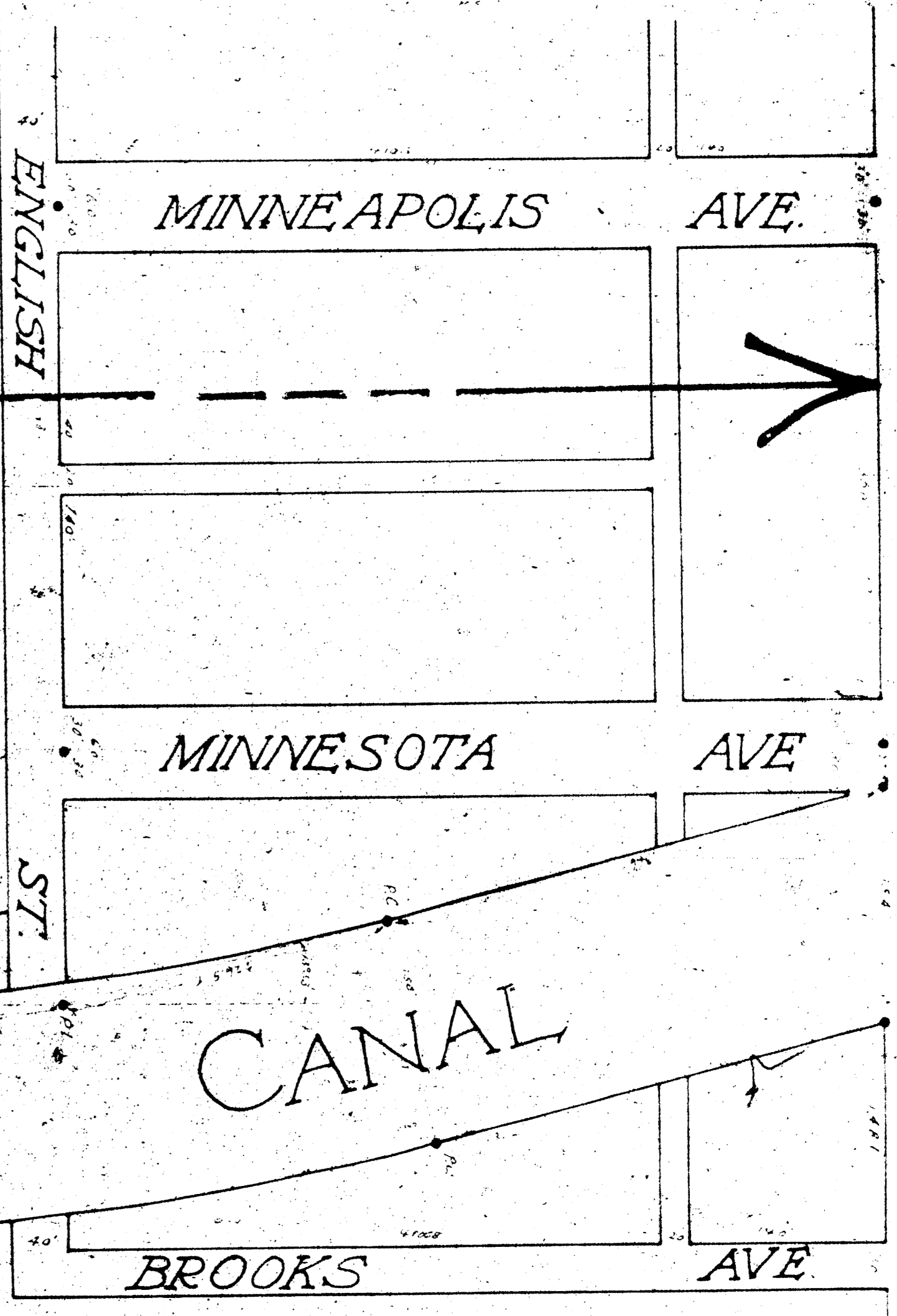
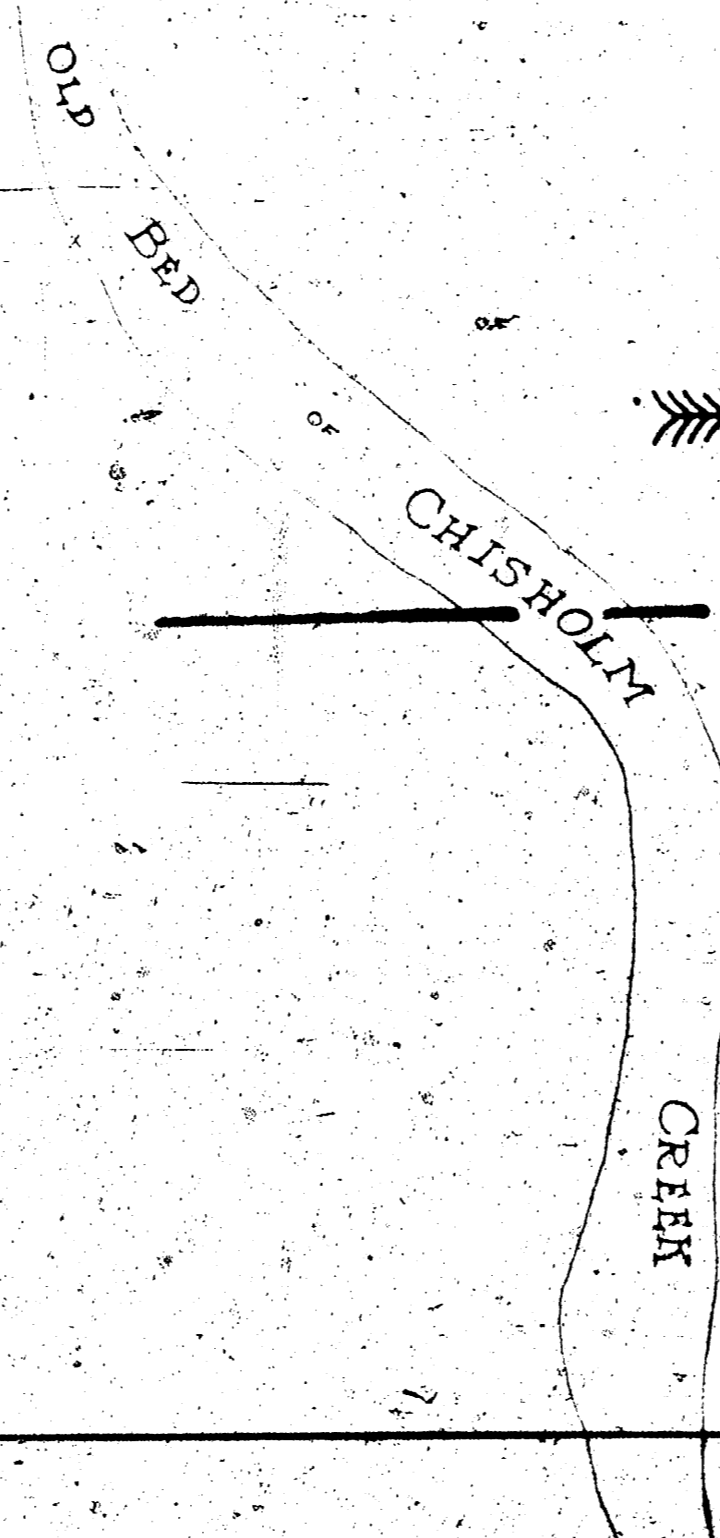
Sta. 24+0 N. of Douglas

SHEET-7

To Sta. 1+60
S. of E of Kellogg

Section II

KELLOGG ST



DOUGLAS AVE

WICHITA

DRAINAGE

CANAL

Section I

ST

Sta. 25+82.2
S. of Douglas

ROOSEVELT

SCHOOL

AVE

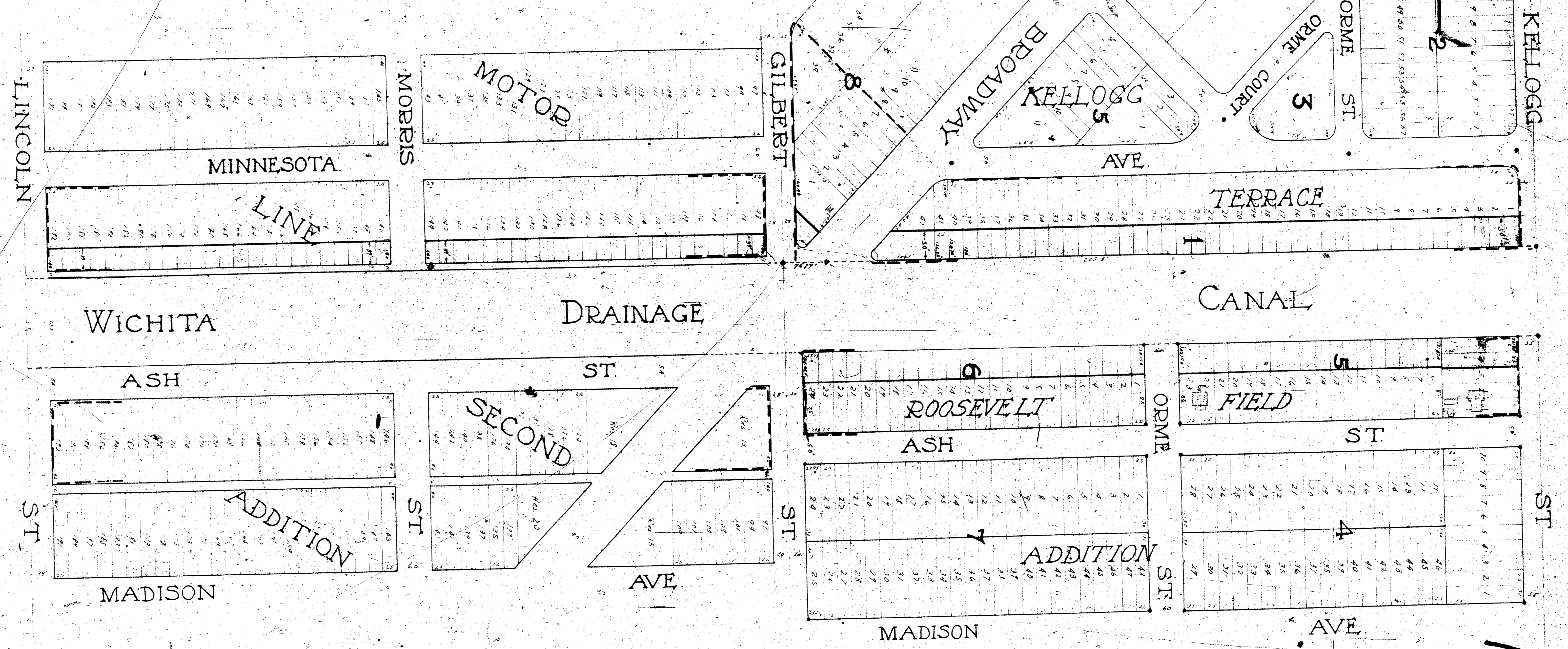
SHEET-8

To Sta. 48+0
S. of Kellogg

Section IV

Sta. 1+60
S. of Kellogg

Section I
From S.E. of
Douglas



To Sta. 30+50
S. of $\frac{1}{2}$ of Kellogg

Section III

