

TEST HOLE LOG

At Crossing No. 1 - Little Arkansas River

Test Hole	Station	Depth to Sand	Depth to Static Water Level
1	11+30	6.5	11.7
2	7+50	6.0	12.5
3	0+20	7.0	12.0

At Crossing No. 2 - Chisholm Creek

1	14+50	6.0	30'
2	12+00	5.0	35'
3	7+40	3.0	70.0'
4	4+25	5.0	11.0'
5	2+60	5.0	11.5'

Note: Test holes were drilled approximately 40 feet west of the centerline of the existing 48" pipe. Static water was measured from the ground surface at each location. Soil above sand was mainly clay and top soil. This information was the best obtainable and static water level conditions are applicable to October 1, 1955. However, each Contractor shall determine soil and ground water conditions to his own satisfaction.

CONTRACT 30

**WATERWORKS IMPROVEMENTS
WICHITA, KANSAS**

**48" WATER TRANSMISSION LINE RELOCATION
LOCATION MAP**

BLACK & VEATCH
CONSULTING ENGINEERS, KANSAS CITY, MO.

DESIGNED BY: W.W. [Signature] CHECKED BY: P.H. [Signature]
 DETAILED BY: C.L. [Signature] APPROVED BY: [Signature]
 TRACED BY: [Signature] DATE: 4-25-55

SHEET
1 OF 4

0-6-55	Added Test Hole Log	W.W. WRC
DATE	REVISION	BY CHD.

By
Date

PLAN CROSSING NO. 1

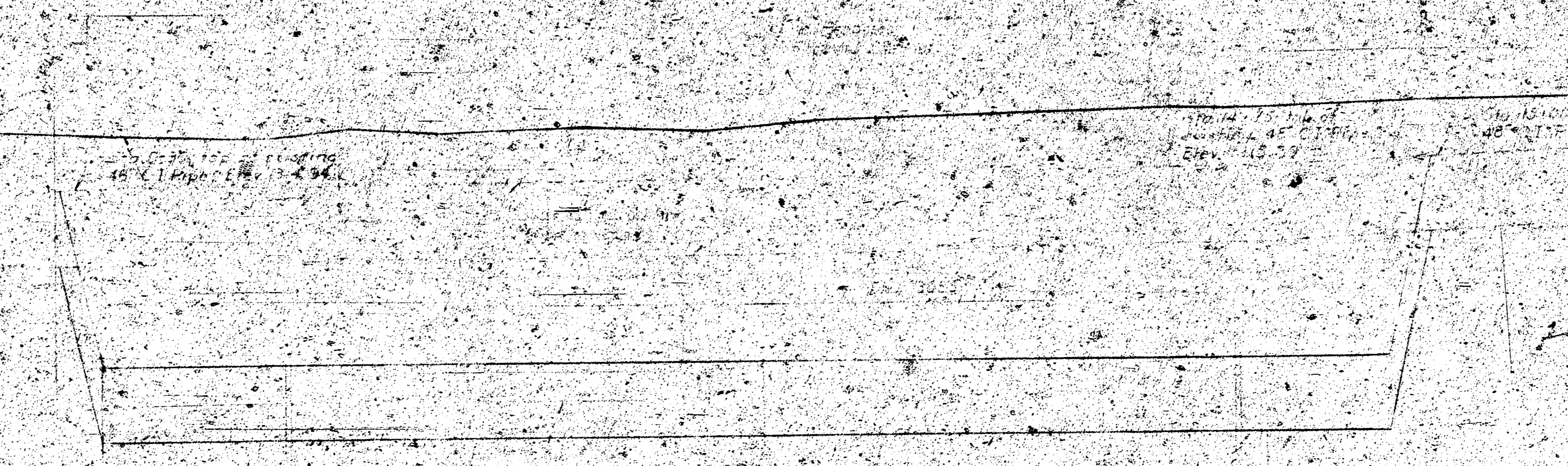
PROFILE CROSSING NO. 1

LITTLE ARKANSAS RIVER FLOODWAY CROSSING

Log
No. 1
Date
Sheet 3 of 4

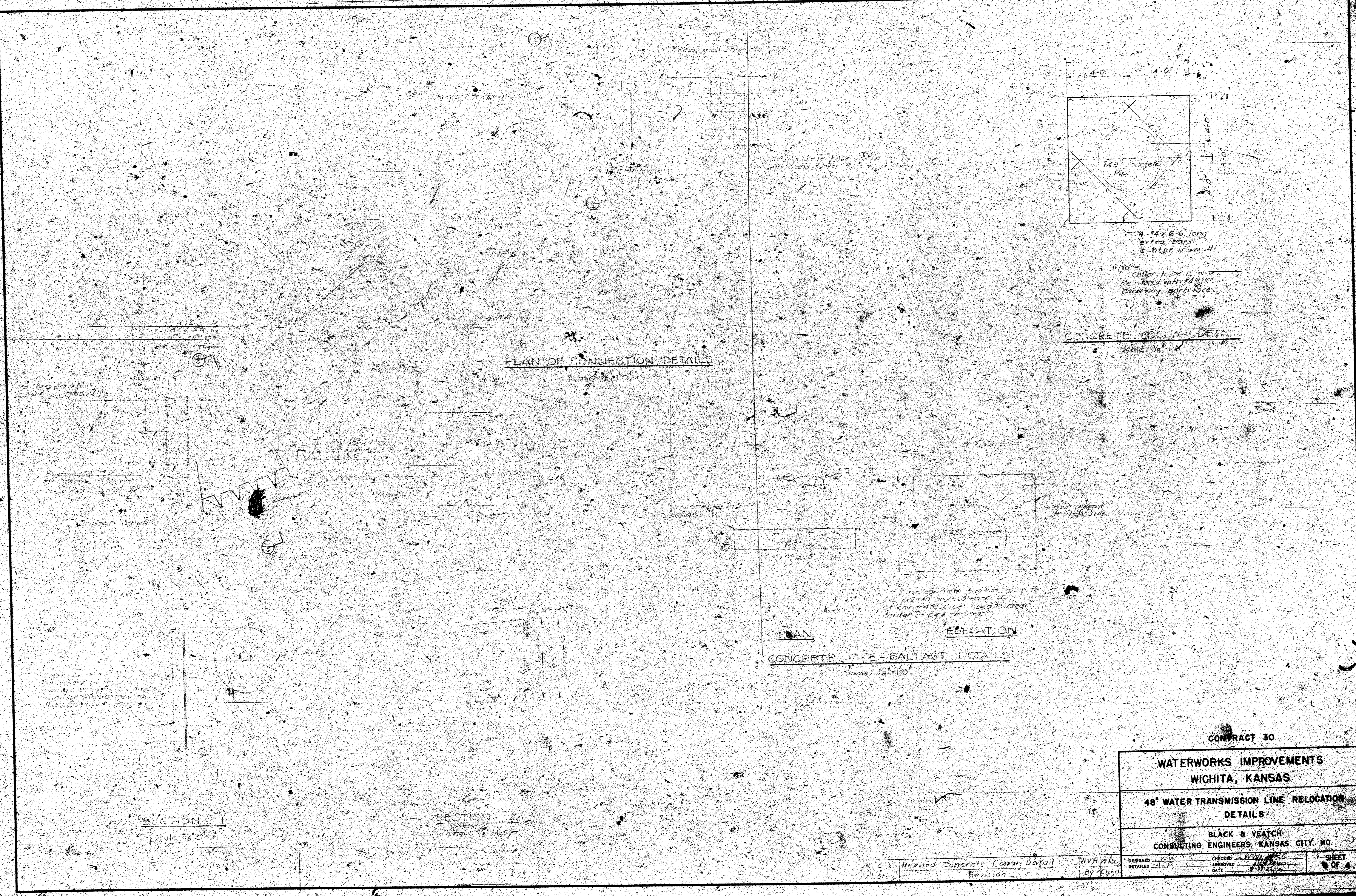


PLAN - CROSSING NO. 1



PROFILE - CROSSING NO. 1

CHISHOLM CREEK DIVERSION CROSSING



CONTRACT 30	
WATERWORKS IMPROVEMENTS WICHITA, KANSAS	
48" WATER TRANSMISSION LINE RELOCATION DETAILS	
BLACK & VEATCH CONSULTING ENGINEERS, KANSAS CITY, MO.	
DESIGNED BY: <i>[Signature]</i>	CHECKED BY: <i>[Signature]</i>
DATE: <i>[Date]</i>	DATE: <i>[Date]</i>
BY: <i>[Signature]</i>	DATE: <i>[Date]</i>
SHEET OF 6	