

LAKE CONTROL & OUTLET WORKS

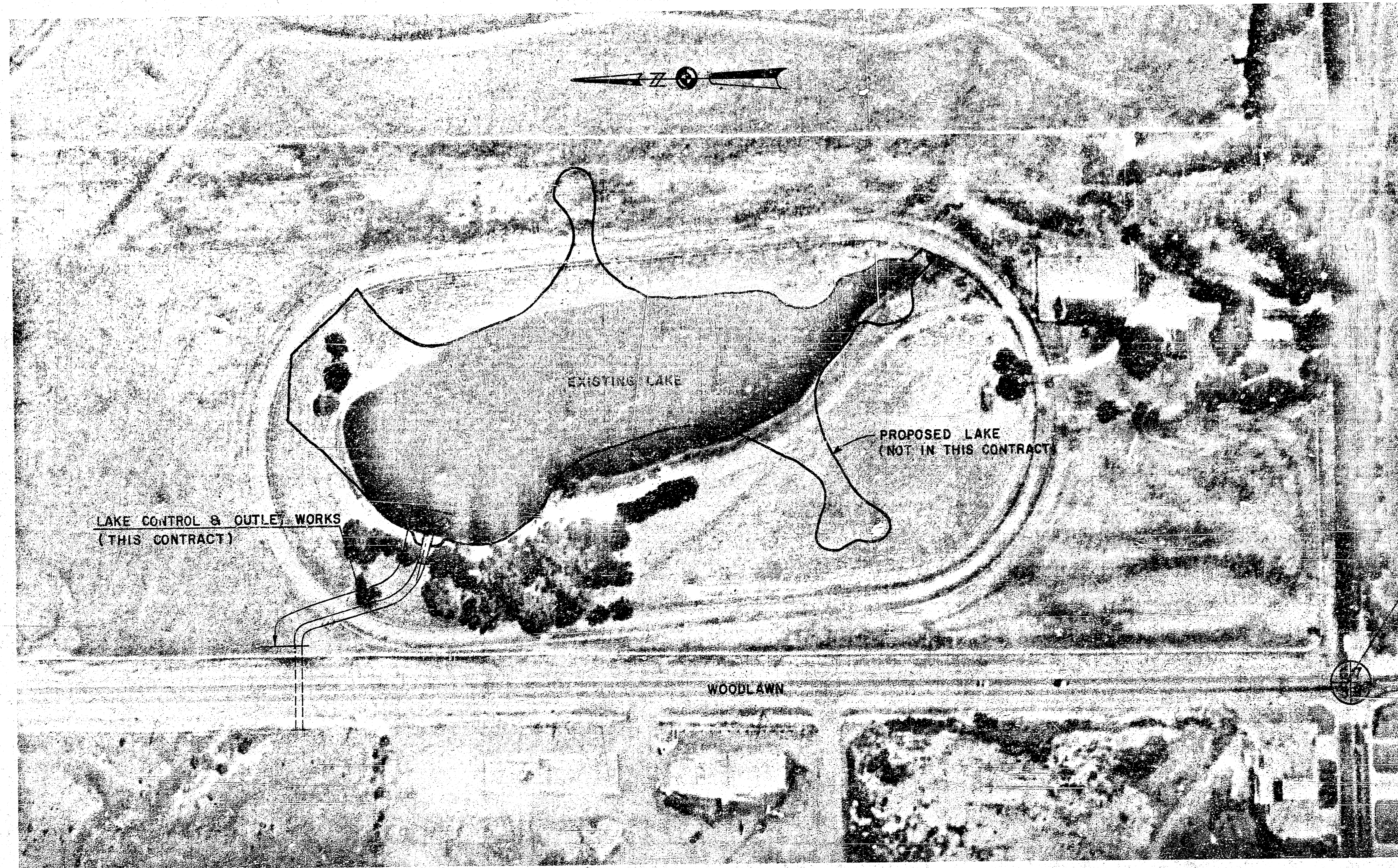
COMOTARA FIRST ADDITION

Wichita, Kansas

Jack P. DeBoer Associates, Inc. - Owner

240 North Rock Road

Wichita, Kansas

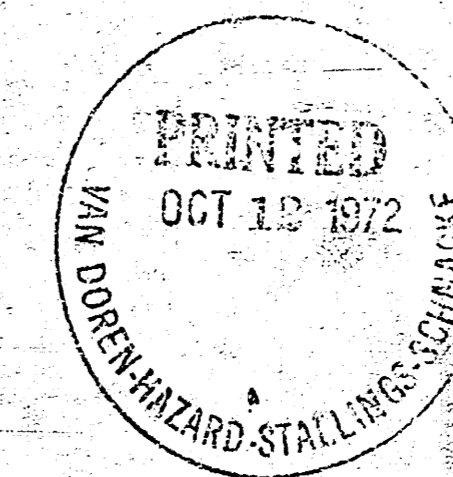


AERIAL LOCATION MAP

INDEX TO DRAWINGS

SHEET NO.	DESCRIPTION
1	TITLE SHEET
2	DRAINAGE AREA INFORMATION
3	SITE PLAN
4	PROFILE AND CROSS SECTIONS
5-6	STRUCTURAL DETAILS

SW. COR. SEC. 6 T27S R2E



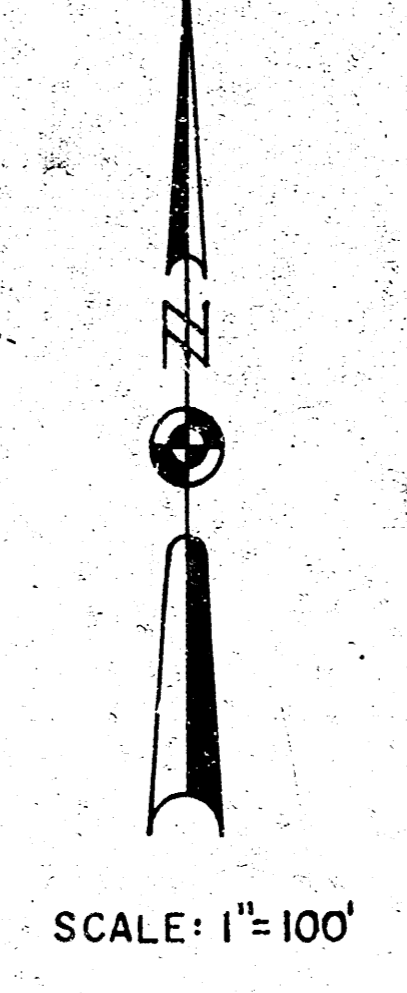
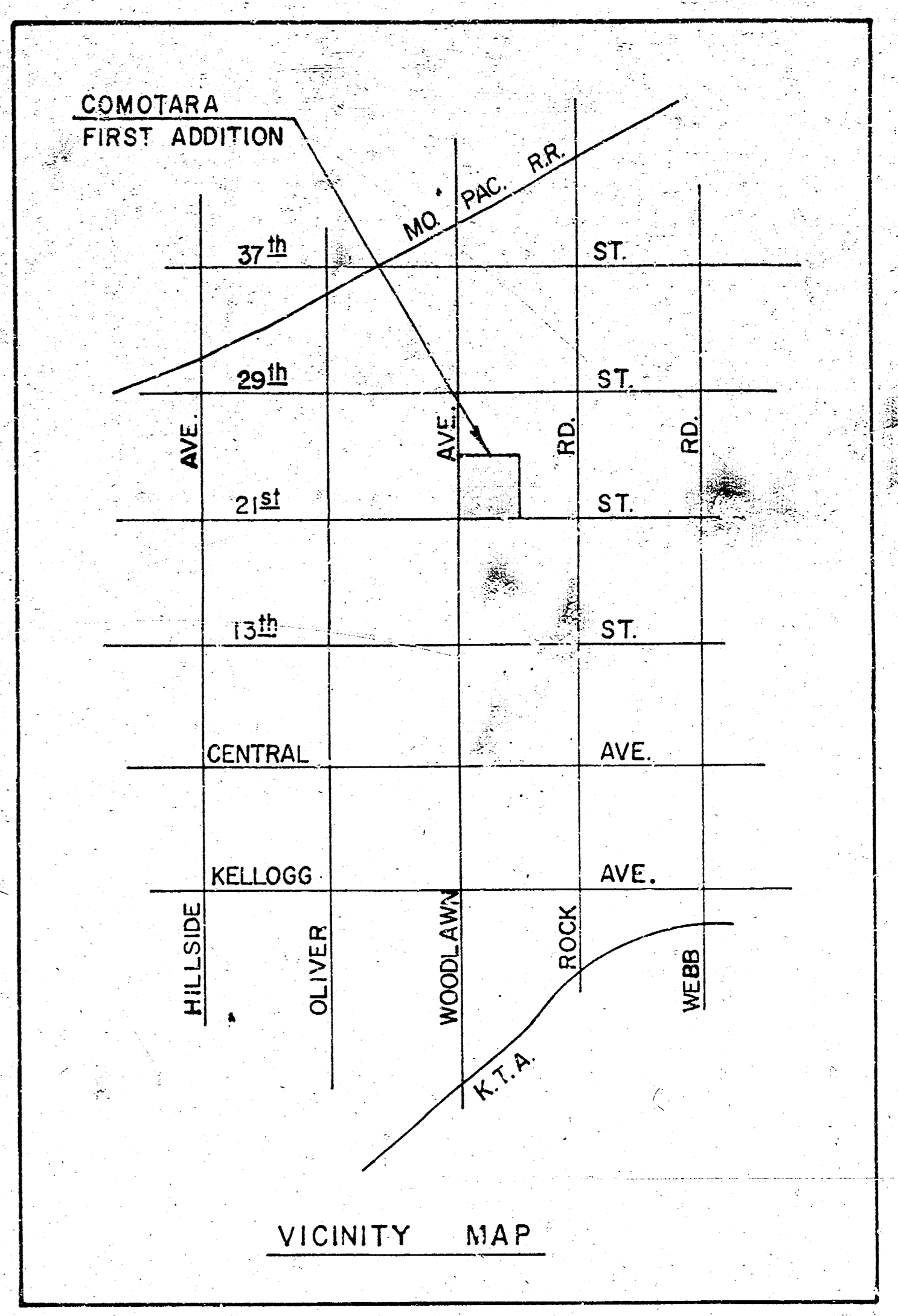
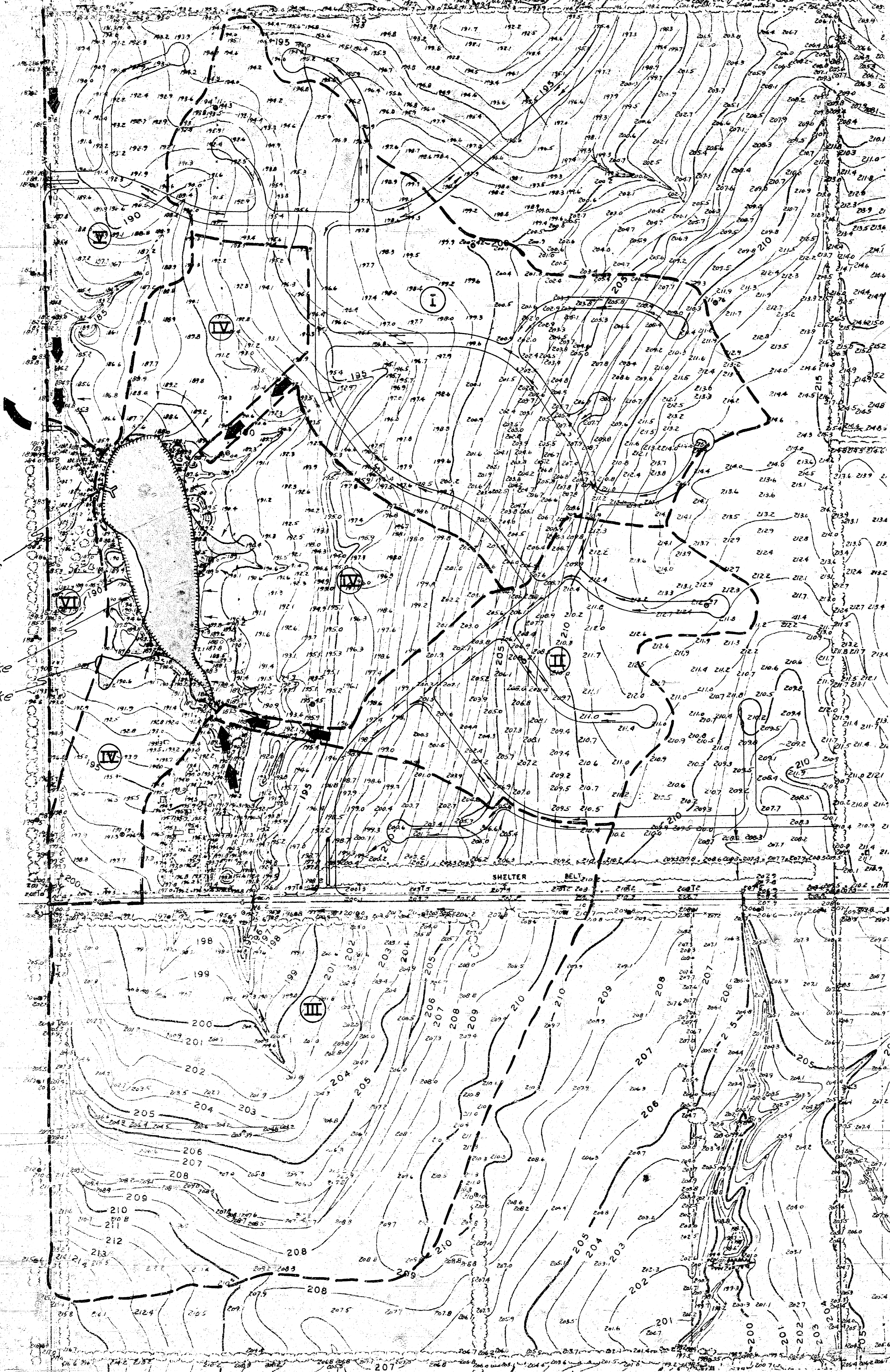
REVISED 10-12-72



VAN DOREN-HAZARD-STALLINGS-SCHNACKE
ENGINEERS-ARCHITECTS · WICHITA, KANSAS

SHEET
1
OF 6

5 Acres add. drainage



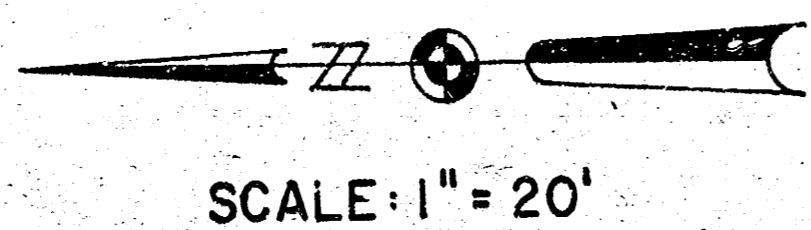
Drainage Area Characteristics, Summarized in Table I, are based on:

1. Future development in accordance with Community Unit Plan, Comotara, Phase I (First Addition).
2. Future commercial development in subdrainage Area III.
3. Lake Surface Area included in subdrainage Area IV.
 - a. Existing 3 Acres
 - b. Proposed 4 Acres

TABLE I

AREA	ROOF & PAVED	GRASS	TOTAL AREA	TIME OF CONCENTRATION (EFFECTIVE)	RUNOFF COEF. "P"
I	7.29 Ac.	23.38 Ac.	30.67 Ac.		
II	3.74 Ac.	11.50 Ac.	15.24 Ac.		
III	33.07 Ac.	17.74 Ac.	50.81 Ac.		
IV	16.00 Ac. (Incl. Lake)	14.74 Ac.	30.74 Ac.		
TOTAL INTO LAKE	60.10 Ac.	67.36 Ac.	127.46 Ac.	30 Min.	0.63
V	5.59 Ac.	10.88 Ac.	16.47 Ac.	30 Min.	0.66
VI	0	3.38 Ac.	3.38 Ac.	10 Min.	0.40

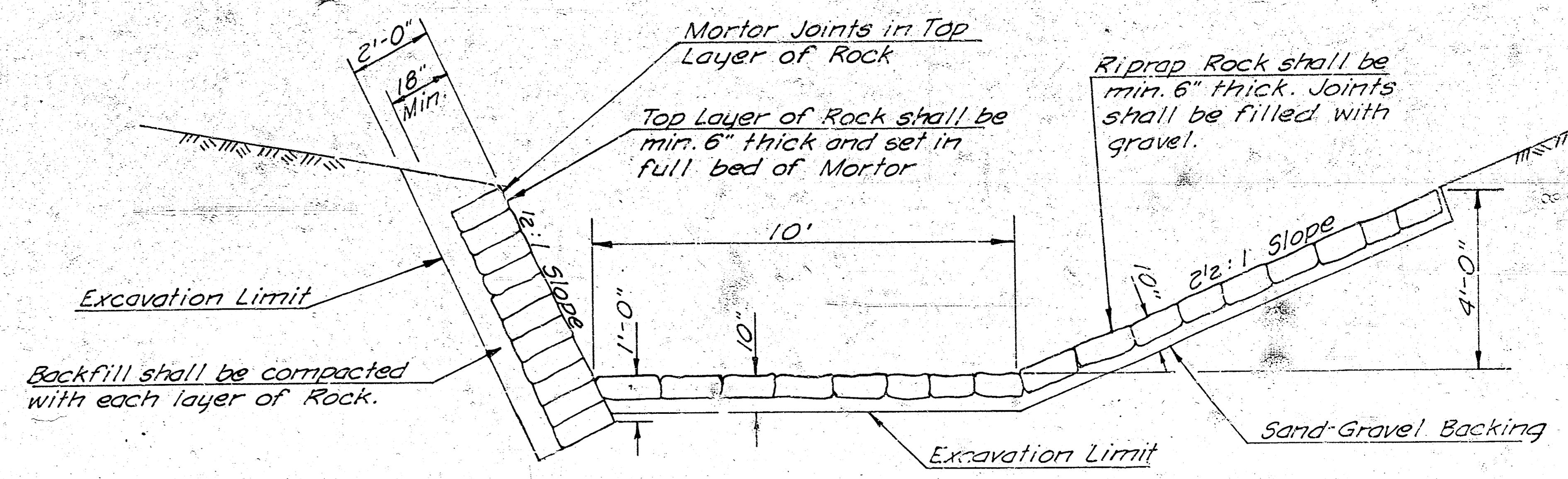
DESIGN	DRAINAGE AREA INFORMATION LAKE CONTROL & OUTLET WORKS COMOTARA 1st ADDN.
DR. BY	
CK. BY	
DATE	
JOB NO.	
VAN DOREN-HAZARD-STALLINGS-SCHNACKE ENGINEERS-ARCHITECTS • WICHITA, KANSAS	
SHEET 2 OF 6	



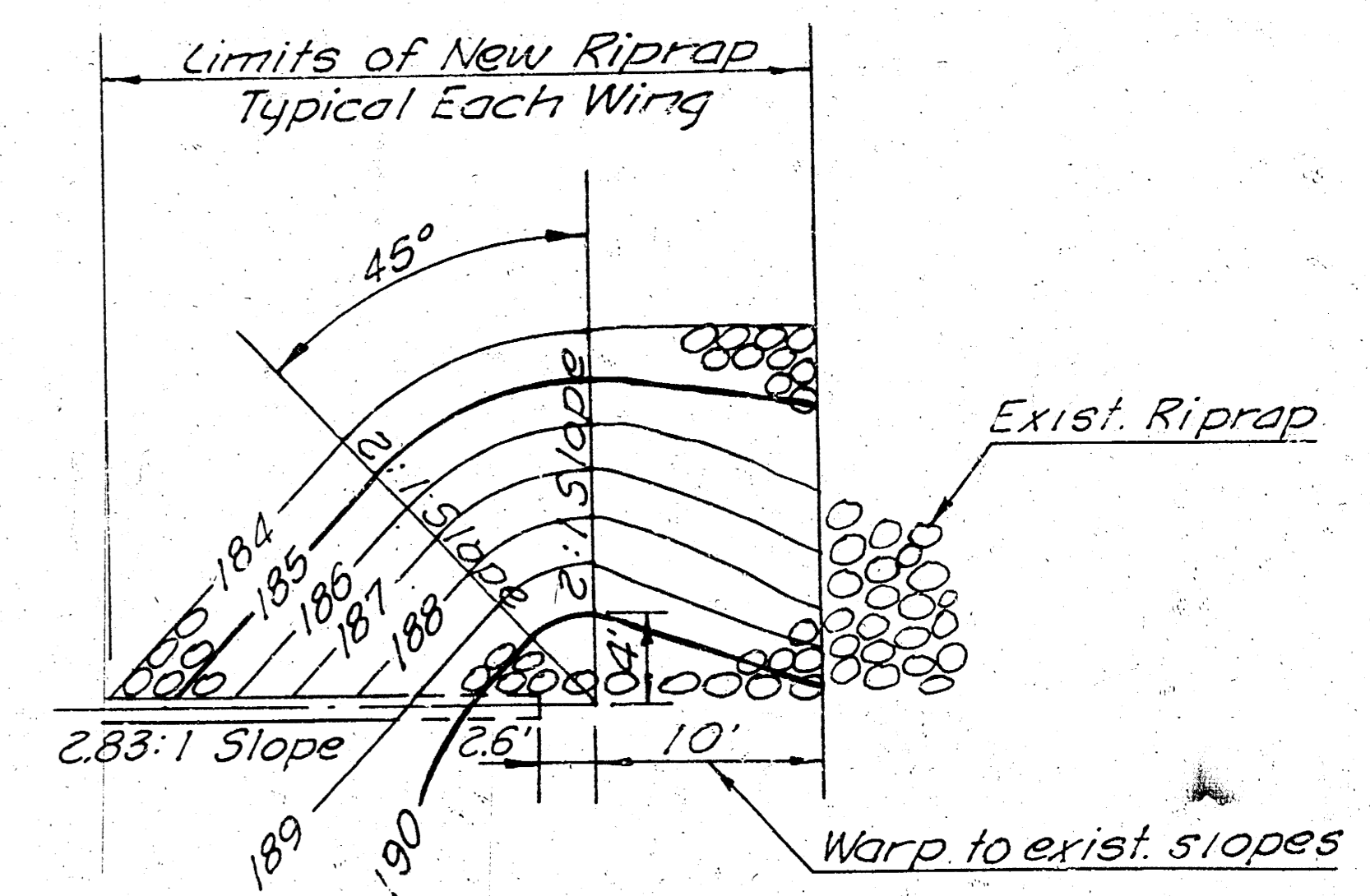
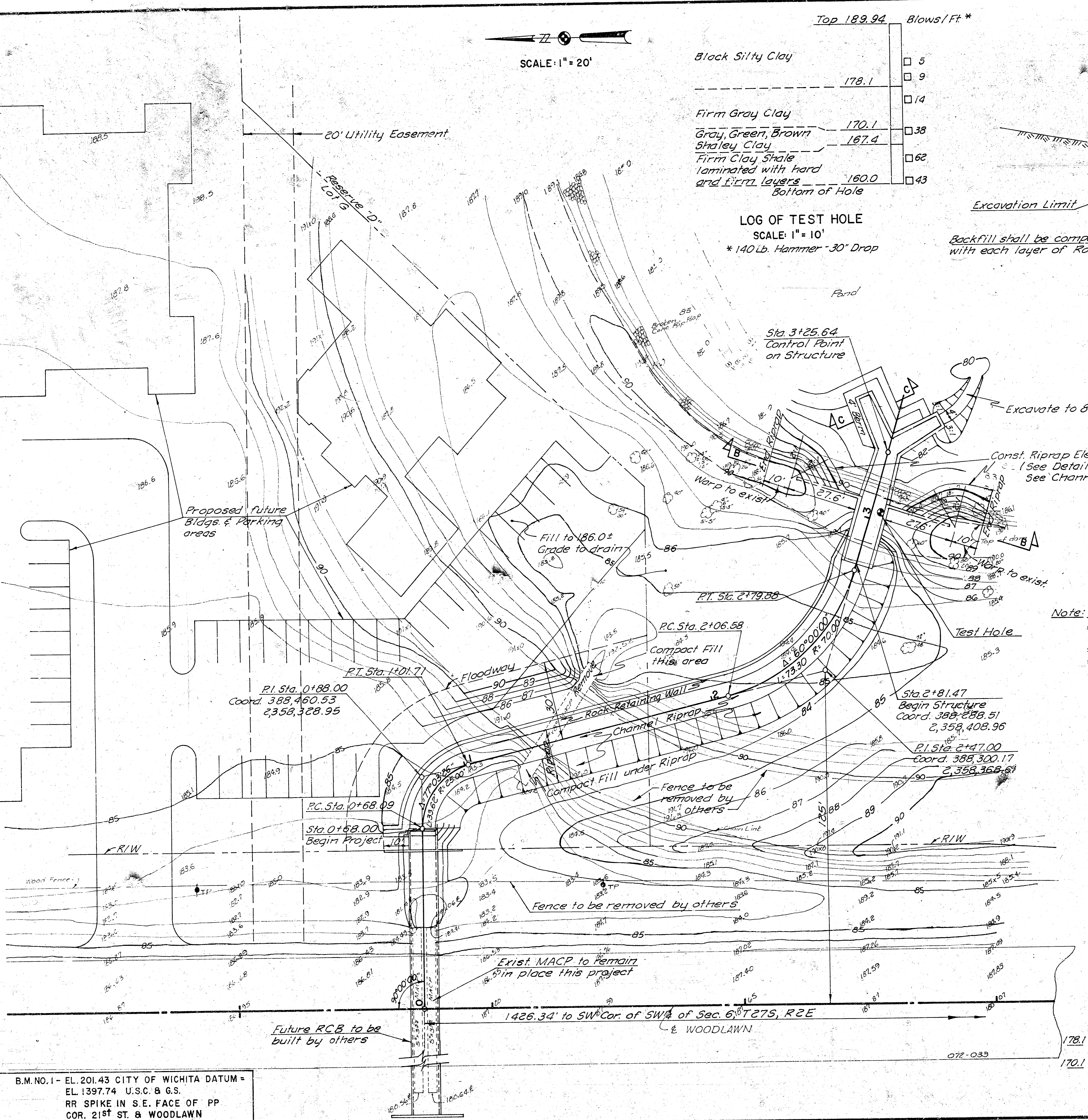
Top 189.94 Blows/Ft *

Black Silty Clay	5
	9
	14
Firm Gray Clay	38
Gray, Green, Brown Shaley Clay	62
Firm Clay Shale laminated with hard and firm layers	43
Bottom of Hole	

LOG OF TEST HOLE
SCALE: 1" = 10"
* 140 Lb. Hammer - 30" Drop

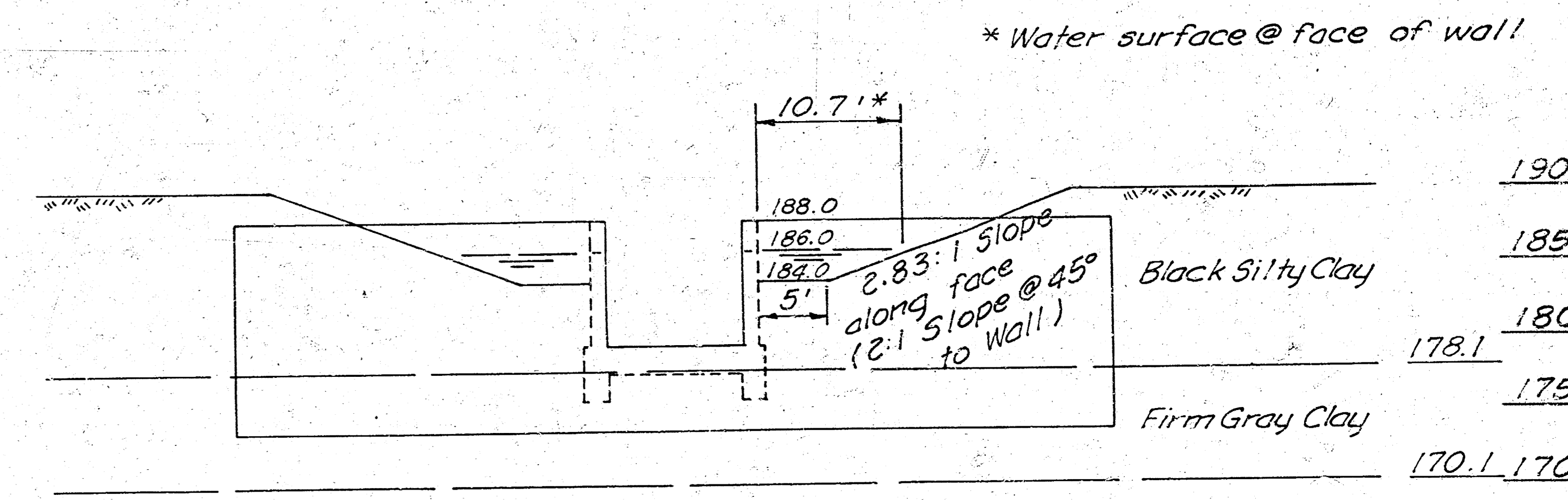


ROCK RETAINING WALL & CHANNEL RIPRAP
SCALE: 3/8" = 1'-0"

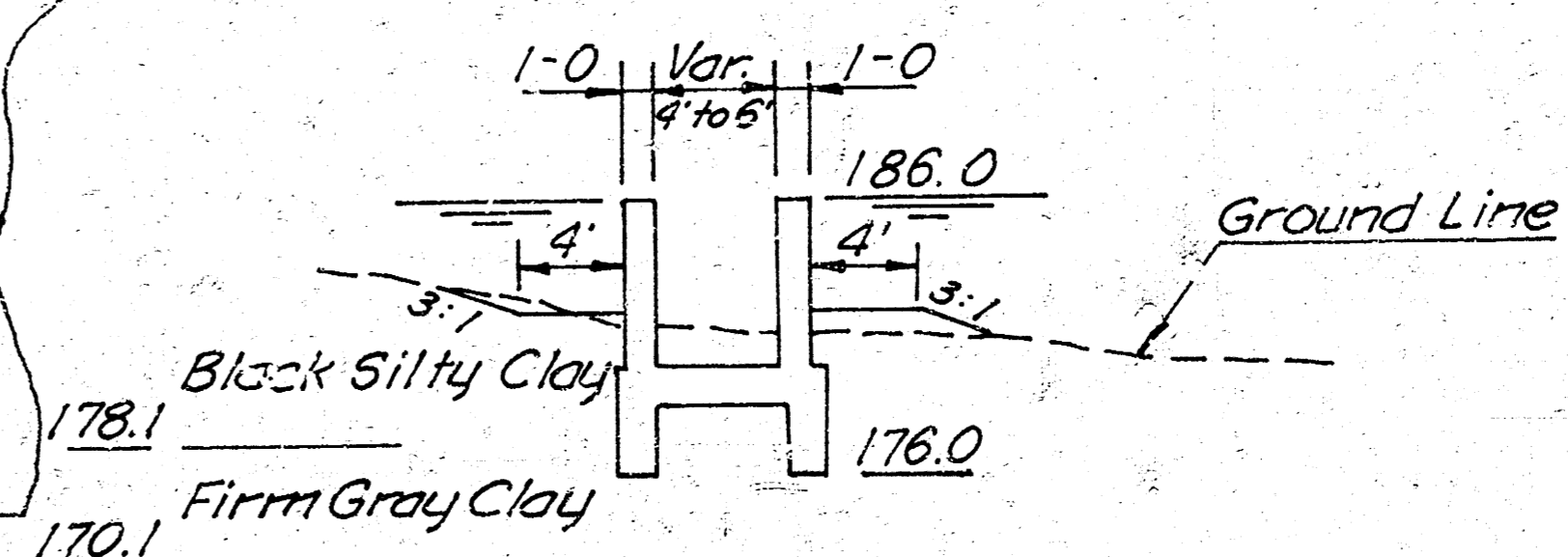


DETAIL "A"
SCALE: 1" = 10"

Note: Sta. 0+68± to Sta. 2+81.47
Pay limits for excavation
Sta. 2+81.47 to end of weir
Lump sum (incl. excavation, backfill, dam riprap, structure & misc.)



SECTION B-B
SCALE: 1" = 10"



SECTION C-C
SCALE: 1" = 10"

DESIGN	
DR. BY	
CK. BY	
DATE	
JOB NO.	

SITE PLAN

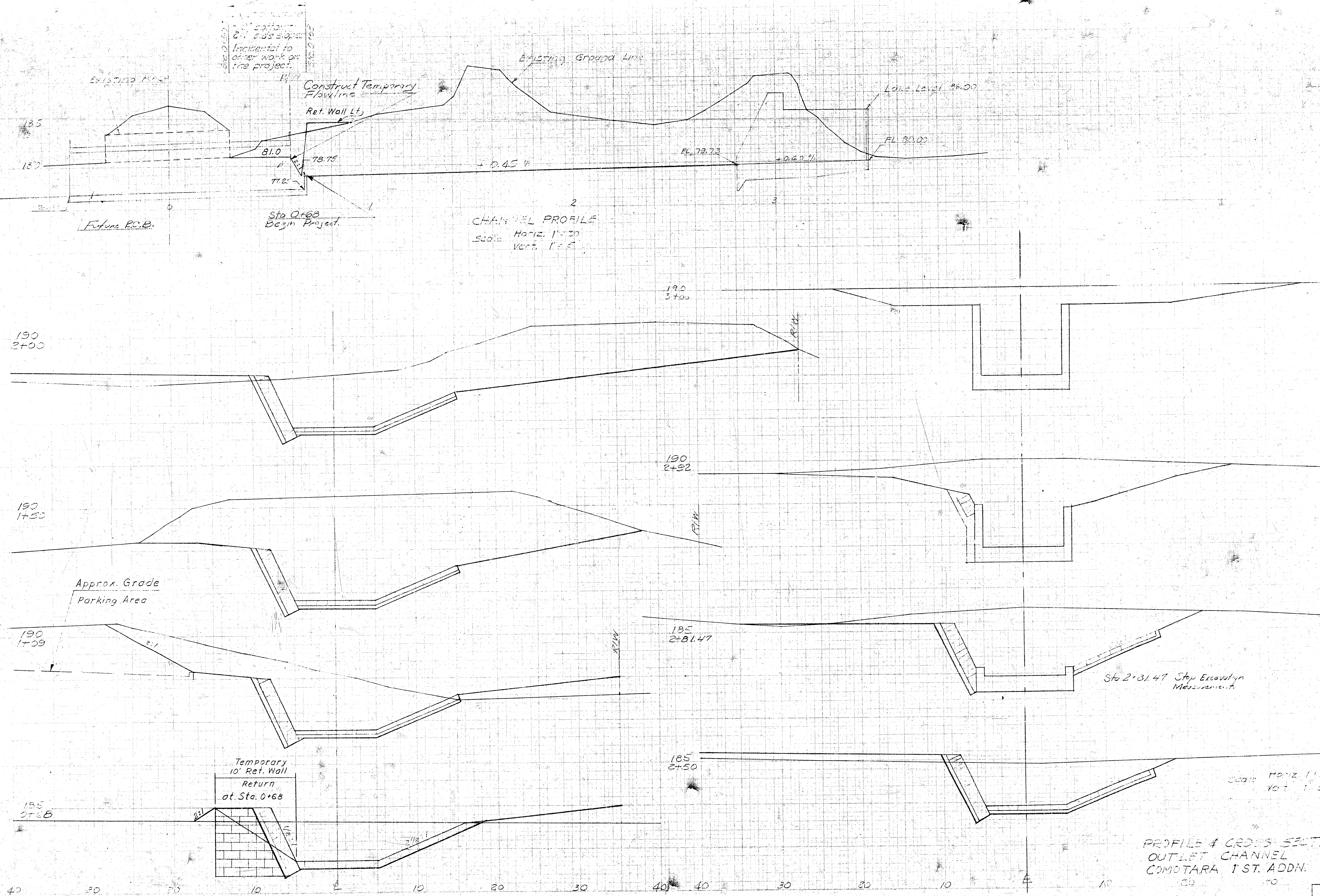
LAKE CONTROL & OUTLET WORKS

COMOTARA 1ST ADDN.

VAN DOREN-HAZARD-STALLINGS-SCHNACKE
ENGINEERS-ARCHITECTS · WICHITA, KANSAS

B.M. NO. 1 - EL. 201.43 CITY OF WICHITA DATUM =
EL. 1397.74 U.S.C. & G.S.
RR SPIKE IN S.E. FACE OF PP
COR. 21ST ST. & WOODLAWN

Incidental to other work on the project.

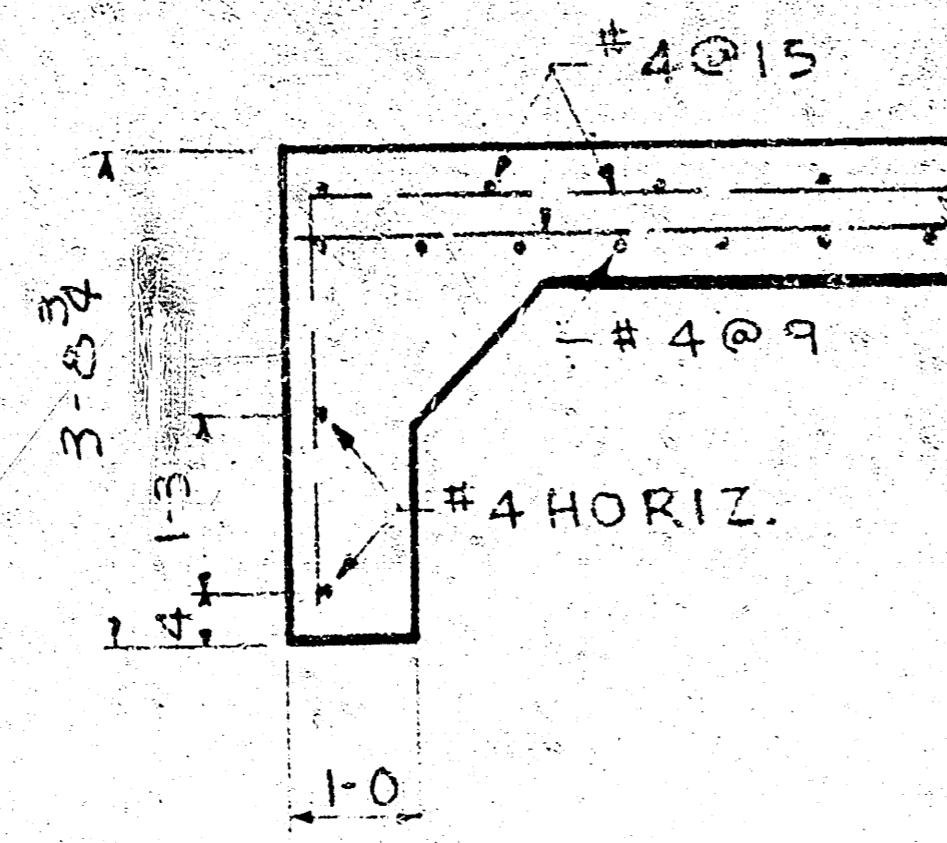
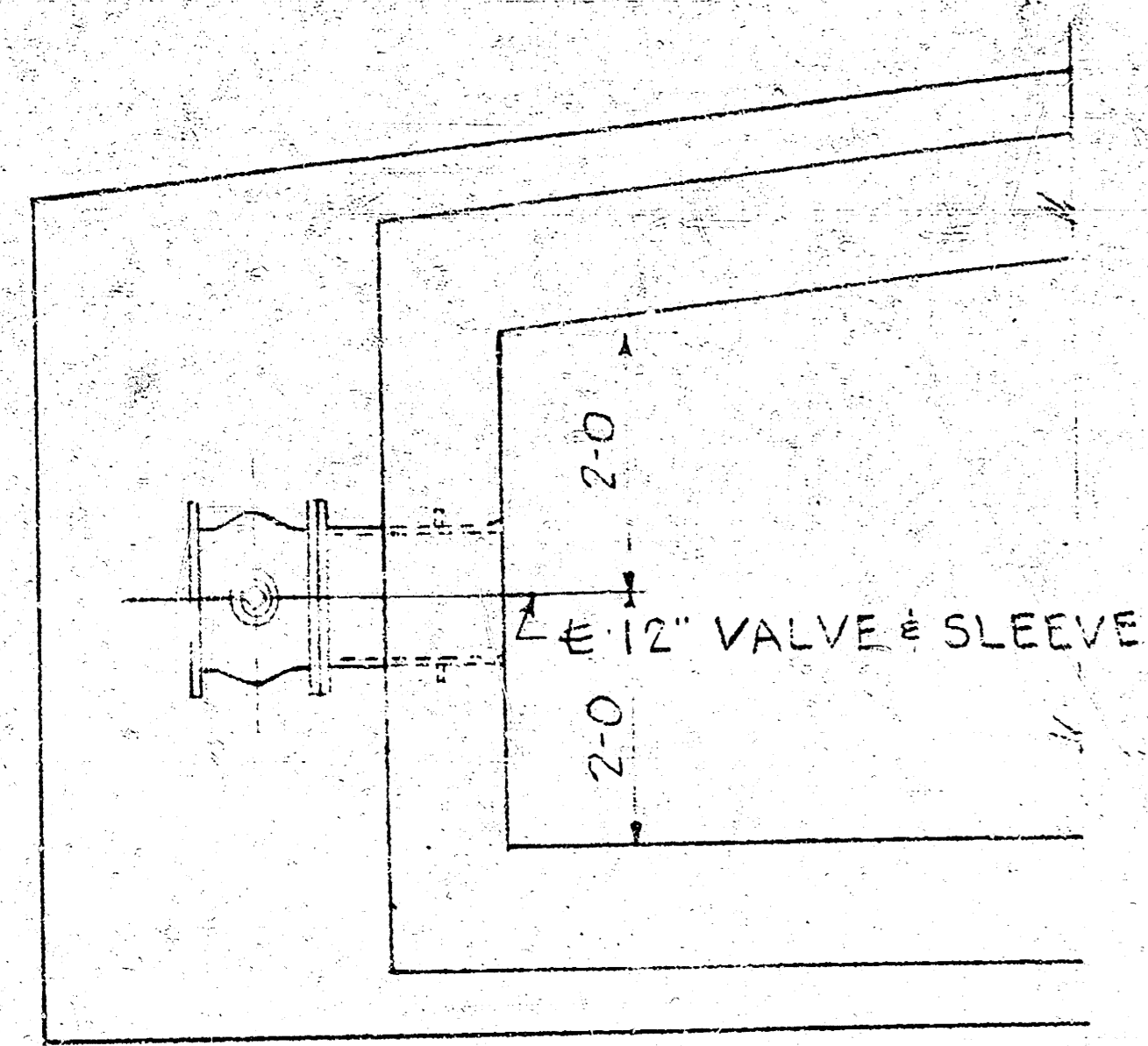


CHANNEL PROFILE
Scale Horiz. 1"=30'
Vert. 1"=5'

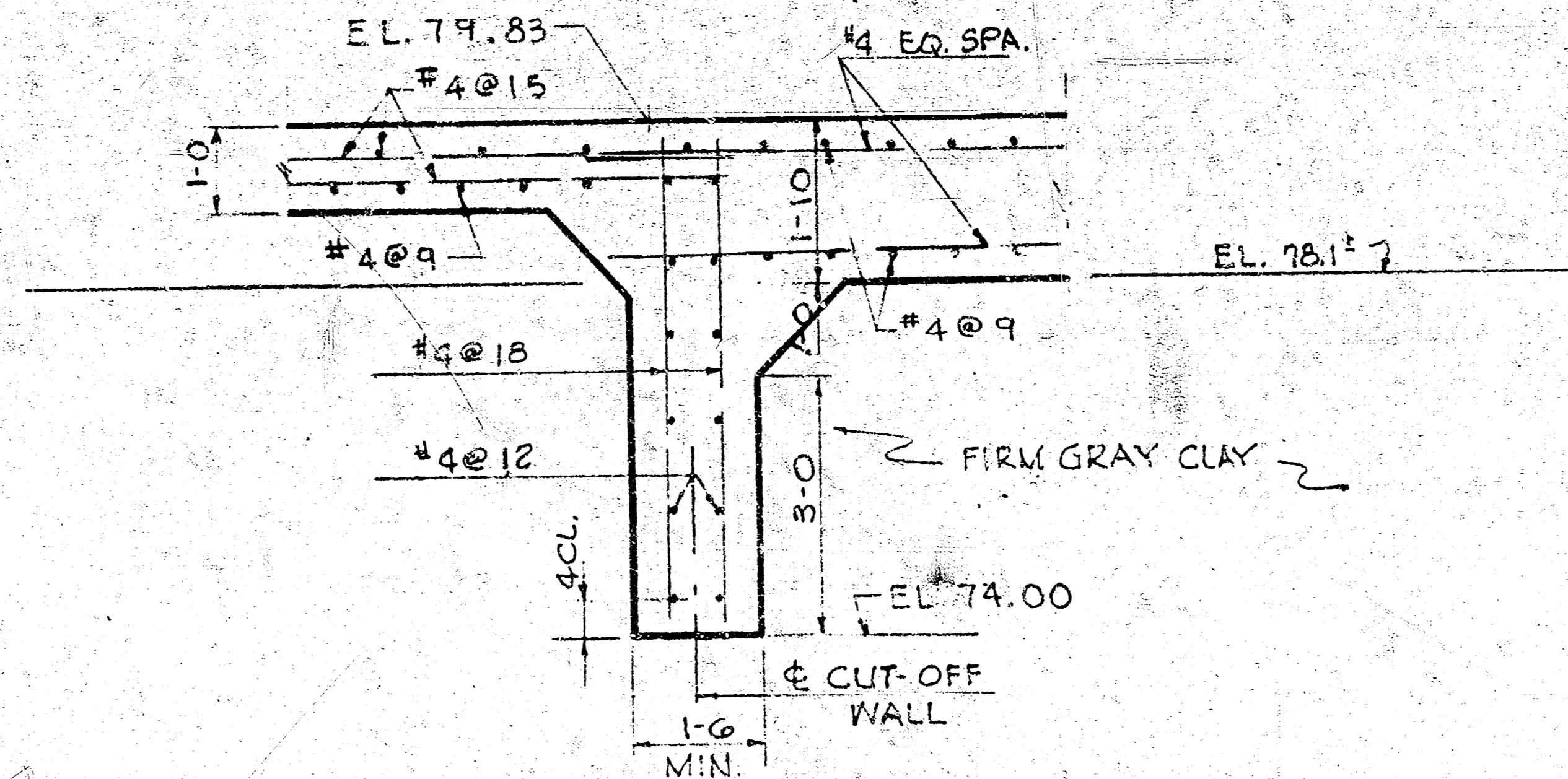
PROFILE & CROSS SECTION
OUTLET CHANNEL
COMOTARA 1 ST. ADDN.

GENERAL NOTES

1. UNIT STRESSES: $f_c = 4,000$ psi; $f_s = 20,000$ psi.
2. CONCRETE: BEVEL ALL EXPOSED EDGES WITH A $\frac{3}{8}$ " TRIANGULAR MOLDING UNLESS OTHERWISE NOTED.
3. REINFORCING STEEL: ALL DIMENSIONS RELATIVE TO REINFORCING STEEL ARE TO CENTERLINE OF BAR UNLESS OTHERWISE NOTED.
4. FORMS: FORMS SHALL BE REQUIRED ABOVE THE BOTTOM OF THE SLAB OR AS NOTED ON THE PLANS. WHERE FORMS ARE OPTIONAL AND CONCRETE IS PLACED DIRECTLY AGAINST UNDISTURBED EARTH, THE EXCAVATION SHALL BE CUT TO NEAT LINES CONFORMING TO THE DIMENSIONS AS SHOWN ON THE DRAWING.

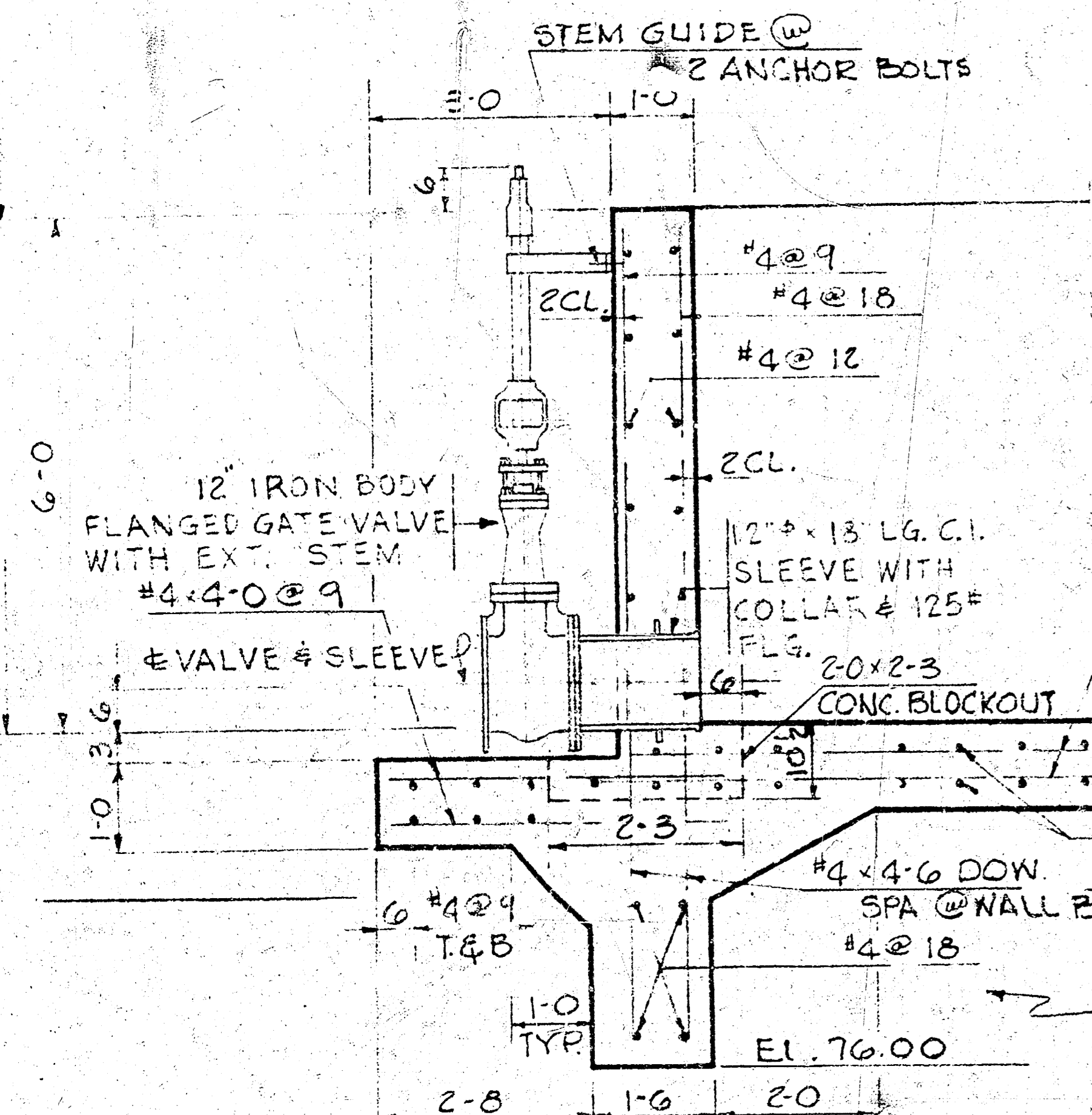


SECTION D-D
SCALE: $\frac{1}{2}$ " = 1'-0"

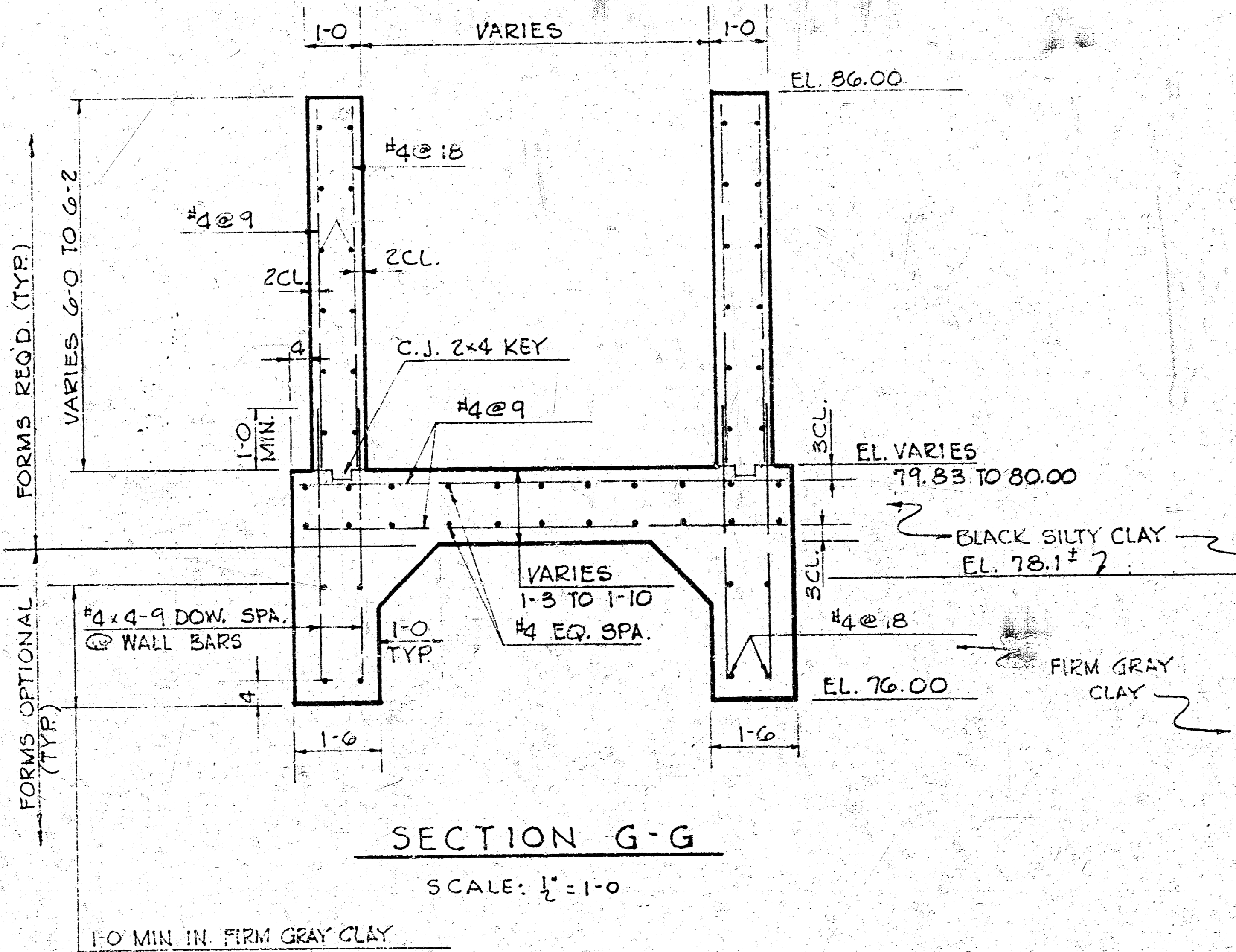


SECTION E-E
SCALE: $\frac{1}{2}$ " = 1'-0"

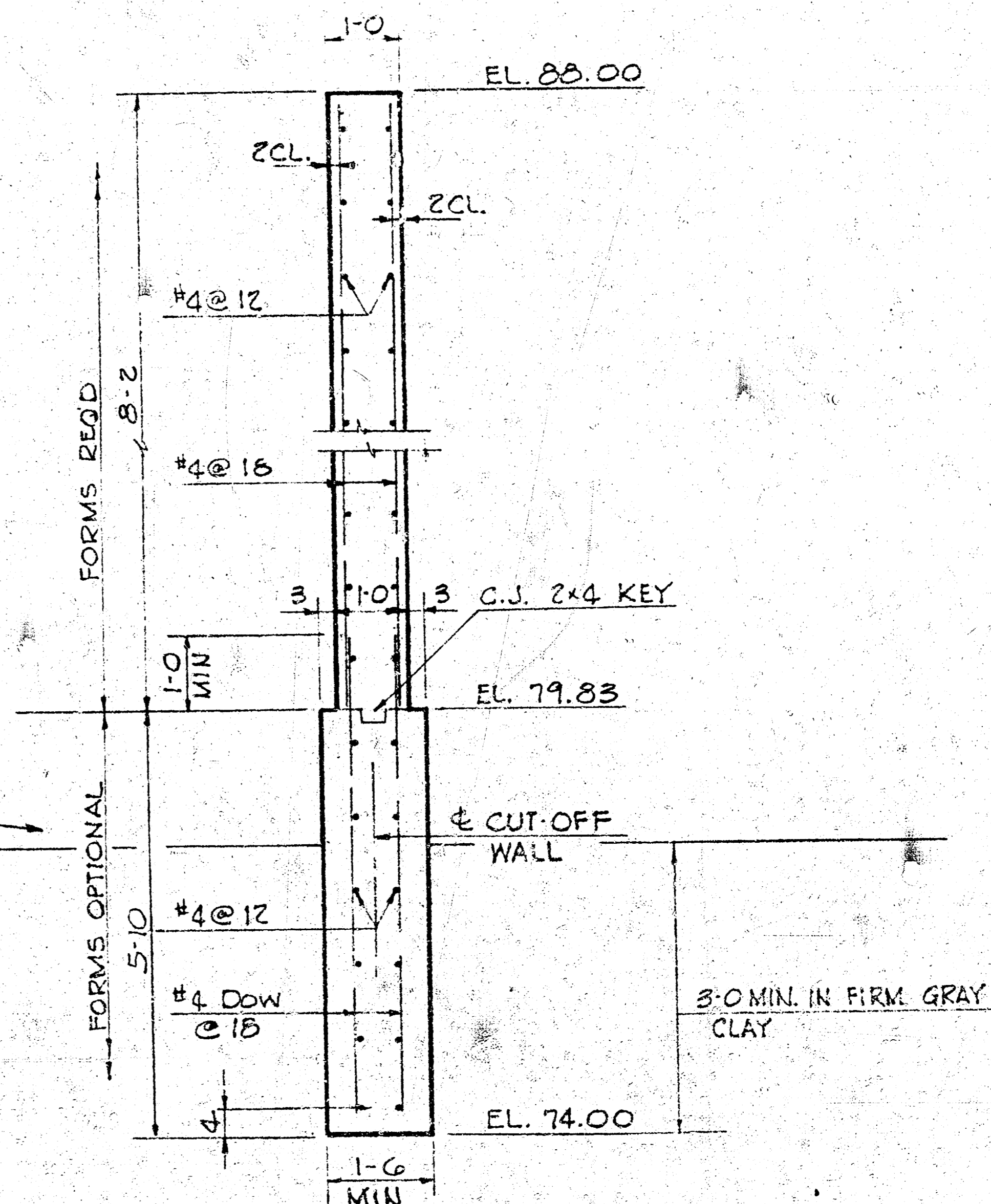
PLAN



ELEVATION SECTION
DRAINAGE VALVE DETAIL
SCALE: $\frac{1}{2}$ " = 1'-0"



SECTION G-G
SCALE: $\frac{1}{2}$ " = 1'-0"



SECTION F-F
SCALE: $\frac{1}{2}$ " = 1'-0"

DESIGN
JRM
DR. BY
JRM
CK. BY
DATE
9-27-70
JOB NO.

STRUCTURAL DETAILS
LAKE CONTROL & OUTLET WORKS
COMOTARA 1ST ADDN.

VAN DOREN-HAZARD-STALLINGS-SCHNACKE
ENGINEERS-ARCHITECTS - WICHITA, KANSAS

SHEET
6
OF