

RECONSTRUCTION OF STORM WATER SEWER

AT

ELIZABETH AND BURTON

Project No.

468-76-245-82082-000-000-001

Index Code

132225

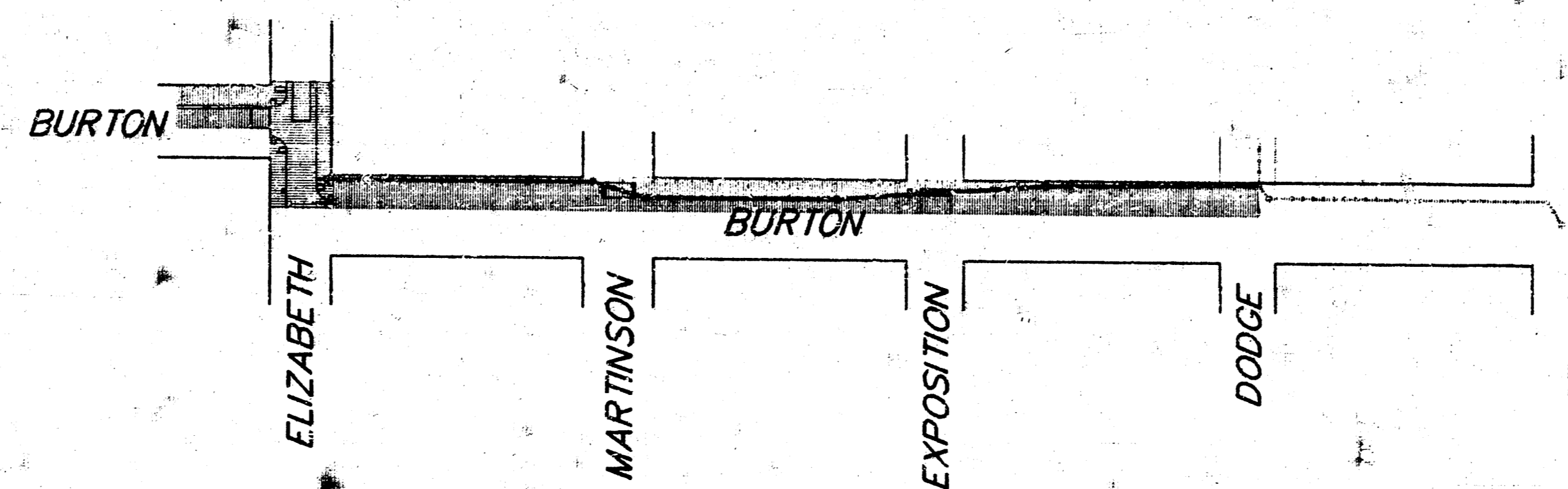
182667

GENERAL NOTES

1. Interurban traffic generated outside the project area and local business or apartment traffic generated within the project area are to be carried through construction as further promulgated by project special provisions.
2. Underground utility service lines and overhead utility pole lines are to be adjusted as necessary by others prior to construction unless the plans specifically call for their adjustment by the Contractor or unless the plans specifically identify a utility to be adjusted by its owner during construction. Existing utilities and their location, as shown on the plans, represent the best information obtainable for design. Location information has been obtained from the various utility companies and is either from company record drawings or company provided field locations. The Contractor will be required to work around existing utilities within the right-of-way which do not conflict with proposed construction.
3. A saw cut of at least one-half the depth of existing surface courses or one-fourth the depth of the existing total pavement thickness shall be provided at locations where proposed construction abuts an existing surface course or pavement for which partial removal of that surface or pavement is required, except when such saw cuts are within three (3) feet of an existing joint the removal shall be extended to the existing joint. Such saw cuts will not be paid for directly and this cost shall be considered as subsidiary to the removal of the surface or pavement.
4. Rubble from the removal of miscellaneous structures and excess excavation which is to be wasted shall be disposed of on sites to be provided by the Contractor. These sites shall be approved by the Engineer as to suitability, appearance and site location. Locations that, in the opinion of the Engineer, will leave an unsightly appearance will not be approved.
5. Trees and shrubs in public right-of-way which are in direct conflict with proposed new construction shall be removed by the Contractor with the Engineer's approval. Trees and shrubs which are not in direct conflict with proposed new construction shall be saved and protected from damage.
6. The Contractor shall give all property owners and/or tenants of developed property directly abutting the construction of this project a minimum of ten (10) days advance notice prior to start of construction.
7. The Contractor shall be responsible for preserving property irons. The Contractor will be required to re-establish any property irons which are damaged or destroyed by his construction operations. Such irons shall be re-established by a licensed land surveyor in accordance with state law.

CITY OF WICHITA, KANSAS

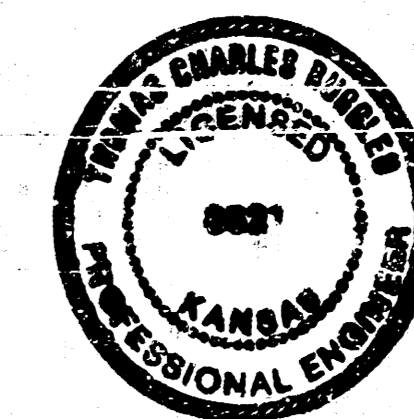
Michael E. Lindebak City Engineer



Project Area

SHEET INDEX

- 1 TITLE SHEET
- 2-3 PLAN AND PROFILE
- 4 PAVEMENT REPLACEMENT PLAN
- 5 SHALLOW MANHOLE DETAILS
- 6 VALLEY GUTTER DETAILS

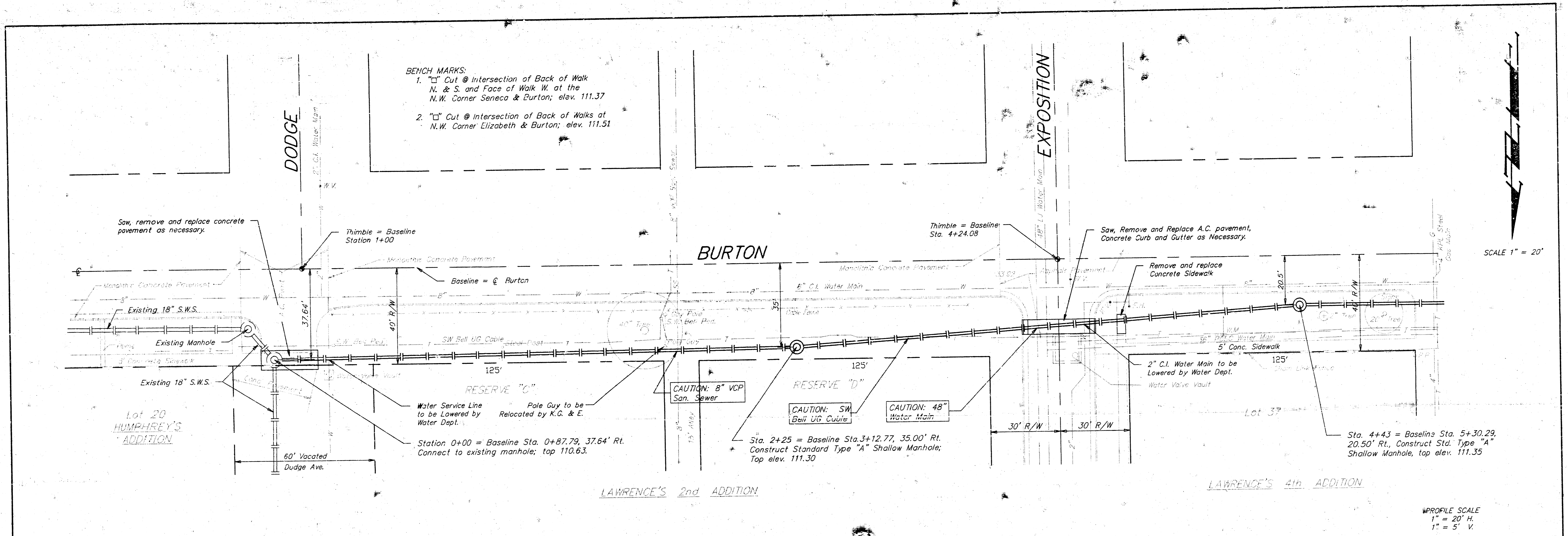


Booked
12/91
MCG

B BAUGHMAN COMPANY P. A.
ENGINEERING & SURVEYING

10-15-90

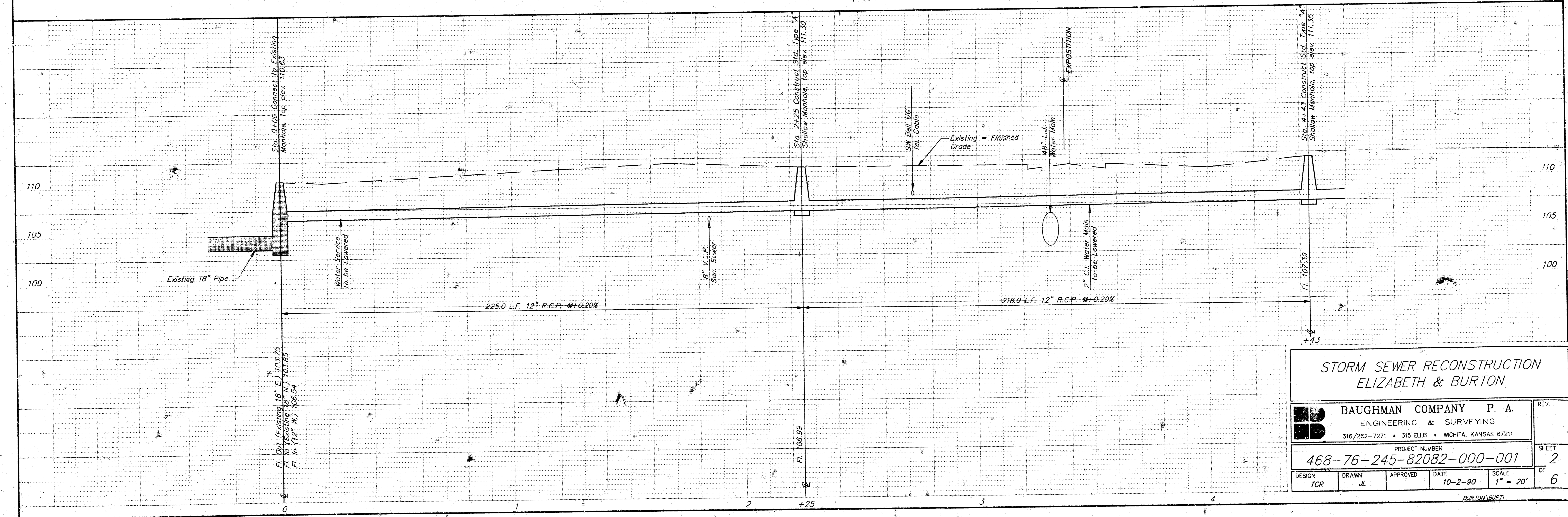
316/262-7271 • 315 ELLIS • WICHITA, KANSAS 67211



- BENCH MARKS:**
1. "□" Cut @ Intersection of Back of Walk N. & S. and Face of Walk W. at the N.W. Corner Seneca & Burton; elev. 111.37
 2. "□" Cut @ Intersection of Back of Walks at N.W. Corner Elizabeth & Burton; elev. 111.51

SCALE 1" = 20'

PROFILE SCALE
1" = 20' H.
1" = 5' V.



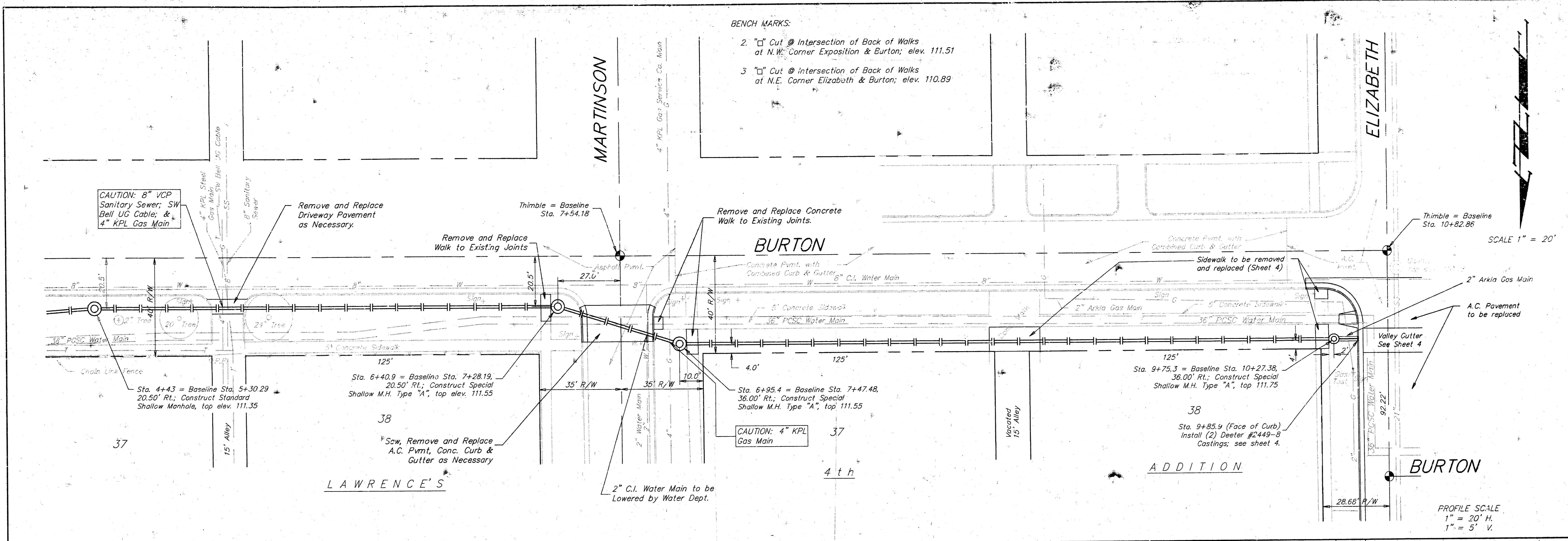
**STORM SEWER RECONSTRUCTION
ELIZABETH & BURTON**

BAUGHMAN COMPANY P. A.
ENGINEERING & SURVEYING
316/262-7271 • 315 ELLIS • WICHITA, KANSAS 67211

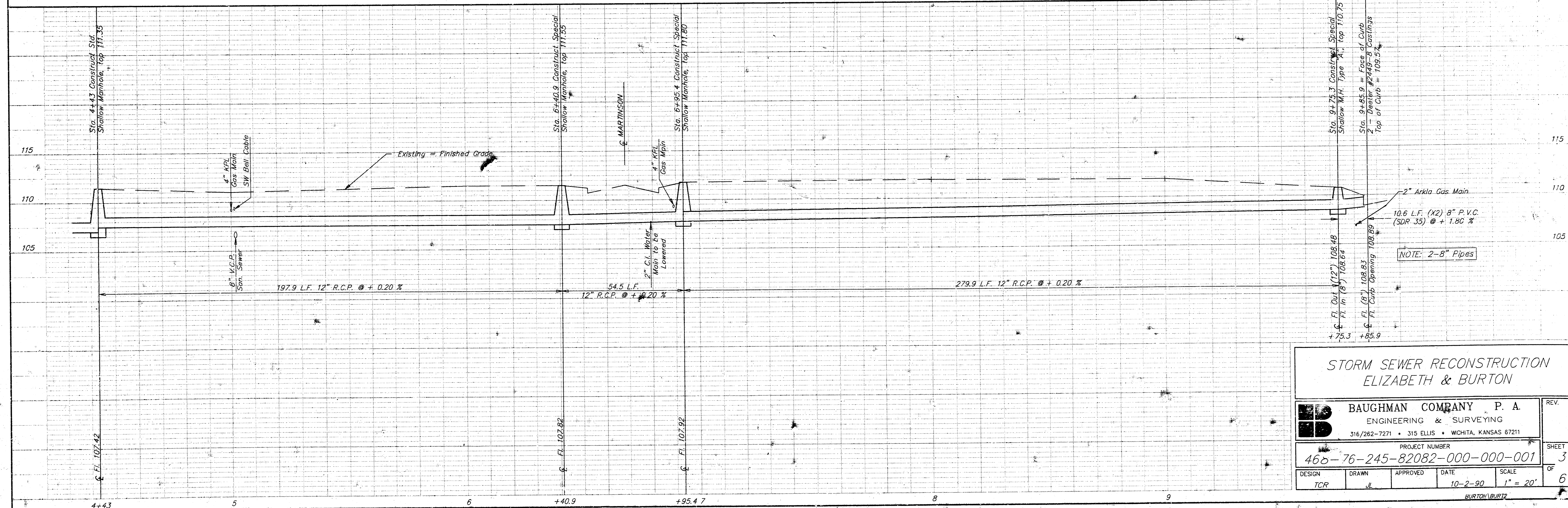
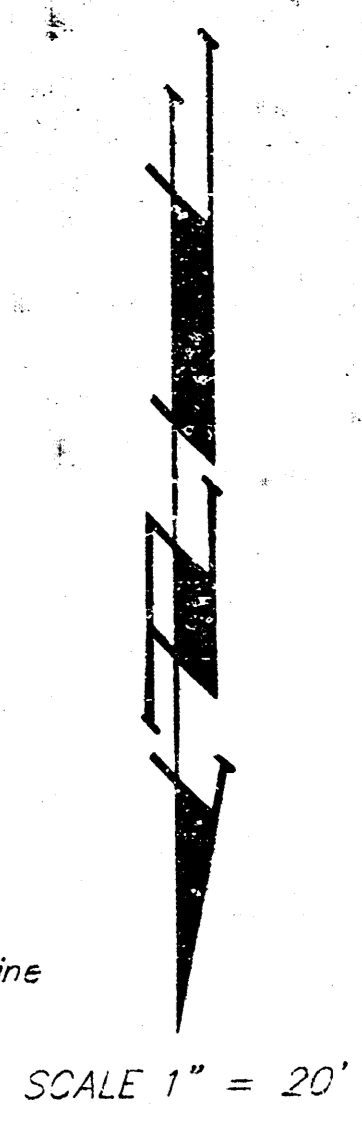
PROJECT NUMBER
468-76-245-82082-000-001

DESIGN TCR	DRAWN JL	APPROVED	DATE 10-2-90
		SCALE 1" = 20'	SHEET 2 OF 6

BURTON/BURTT



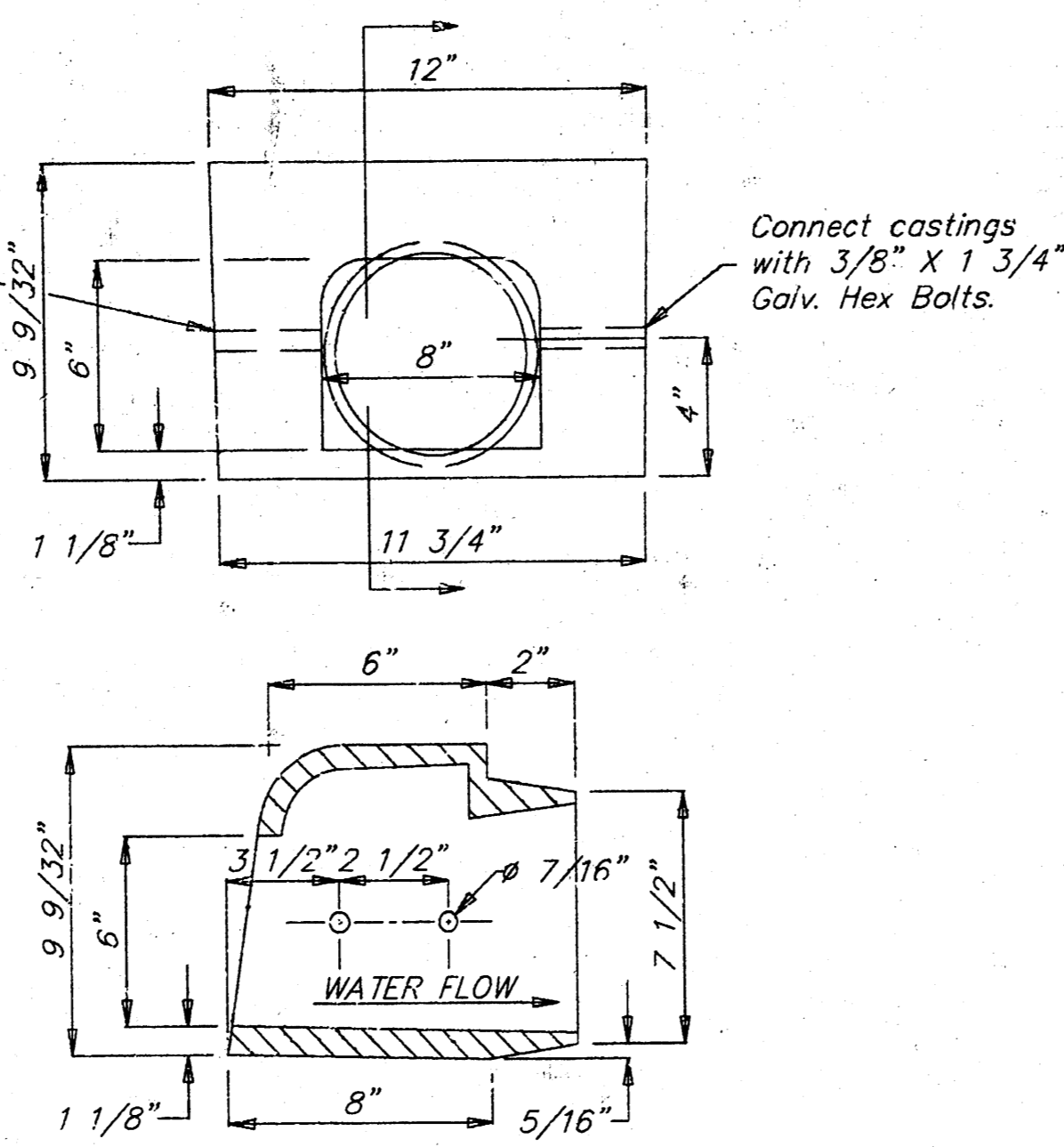
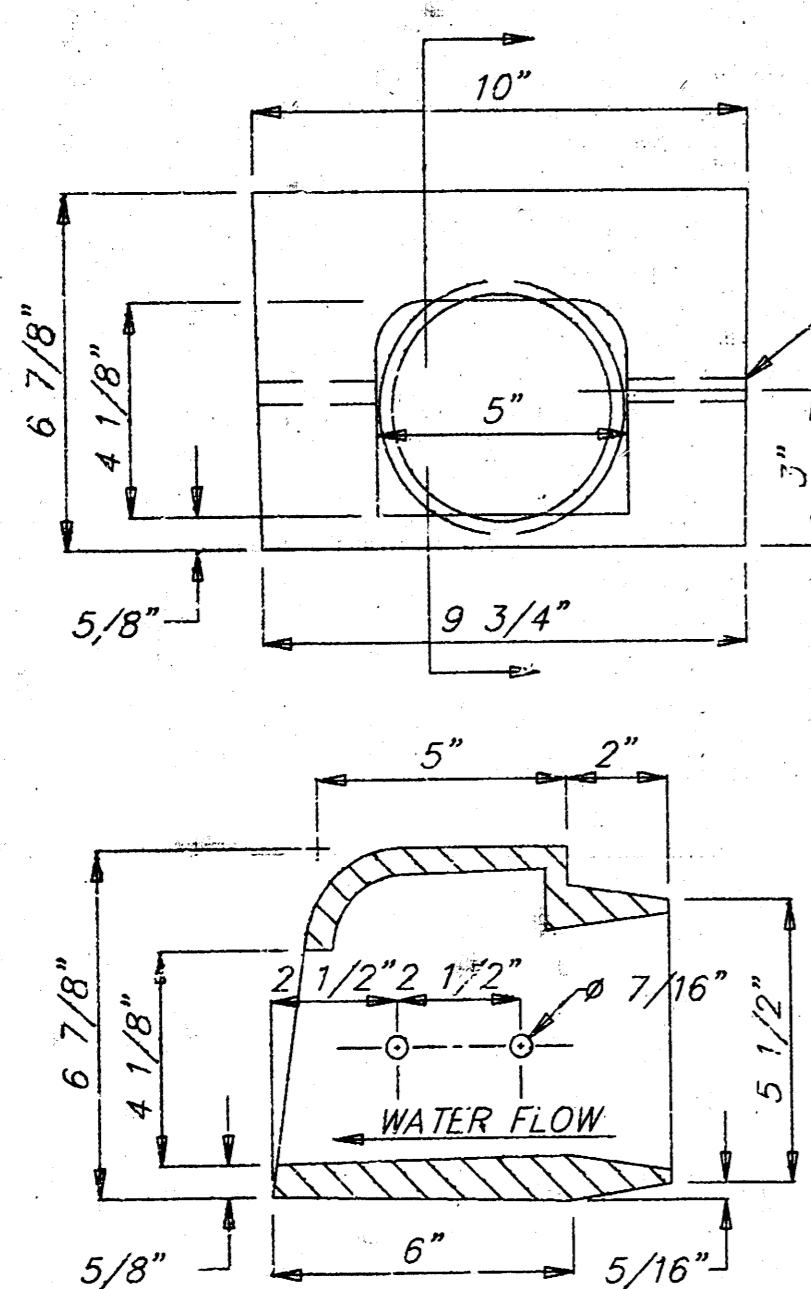
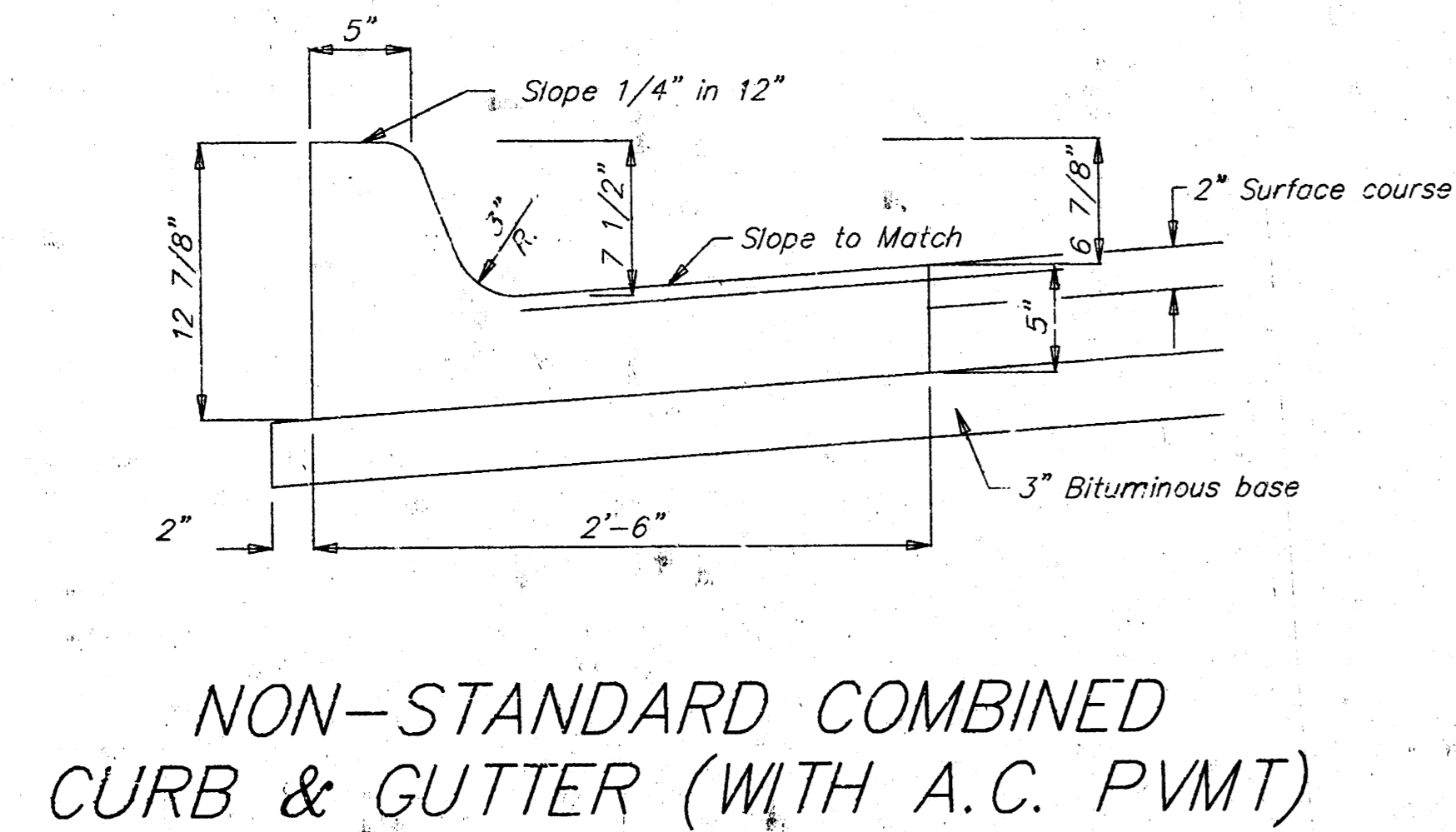
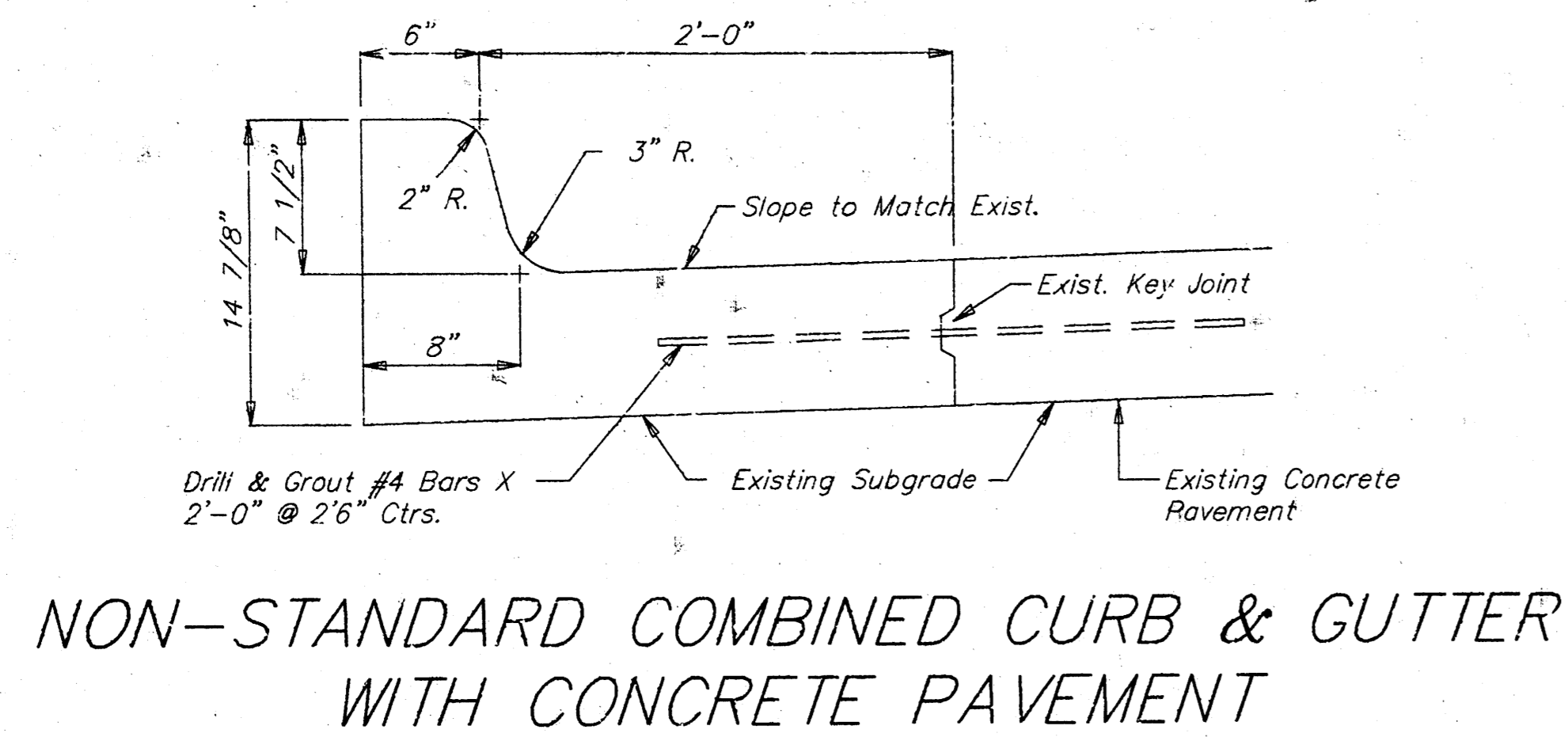
- BENCH MARKS:
2. "C" Cut @ Intersection of Back of Walks at N.W. Corner Exposition & Burton; elev. 111.51
 3. "C" Cut @ Intersection of Back of Walks at N.E. Corner Elizabeth & Burton; elev. 110.89



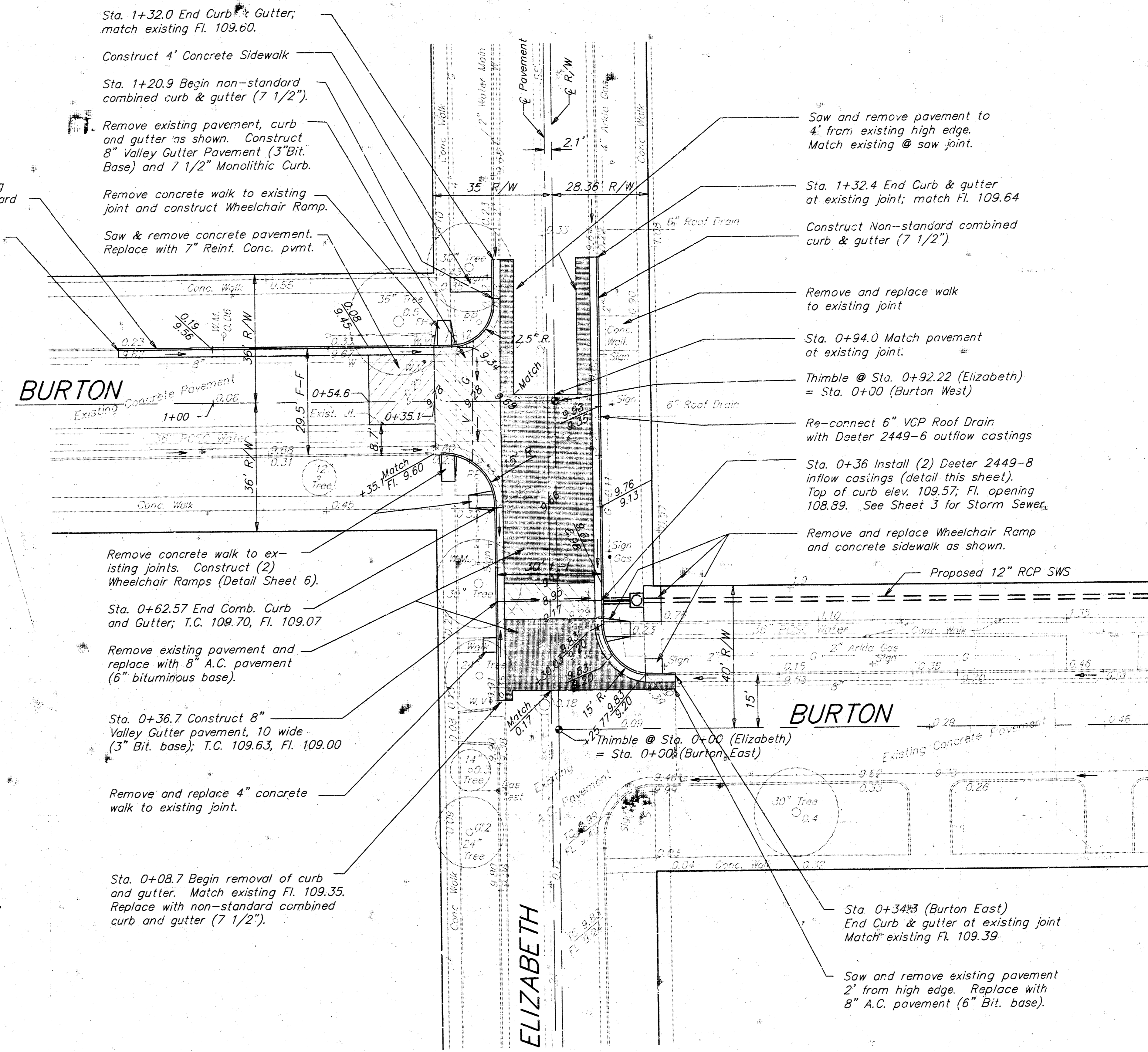
**STORM SEWER RECONSTRUCTION
ELIZABETH & BURTON**

BAUGHMAN COMPANY P. A. ENGINEERING & SURVEYING 316/262-7271 • 315 ELLIS • WICHITA, KANSAS 67211		REV.
		SHEET 3
PROJECT NUMBER 468-76-245-82082-000-000-001		OF 6
DESIGN TCR	DRAWN JL	APPROVED DATE 10-2-90
SCALE 1" = 20'		DATE 10-2-90

BURTON/BUR2



NOTE: Exposed parts of castings are to be painted gray color to match concrete curb, using primer/topcoat system suitable for cast iron, per mfr. recommendations.

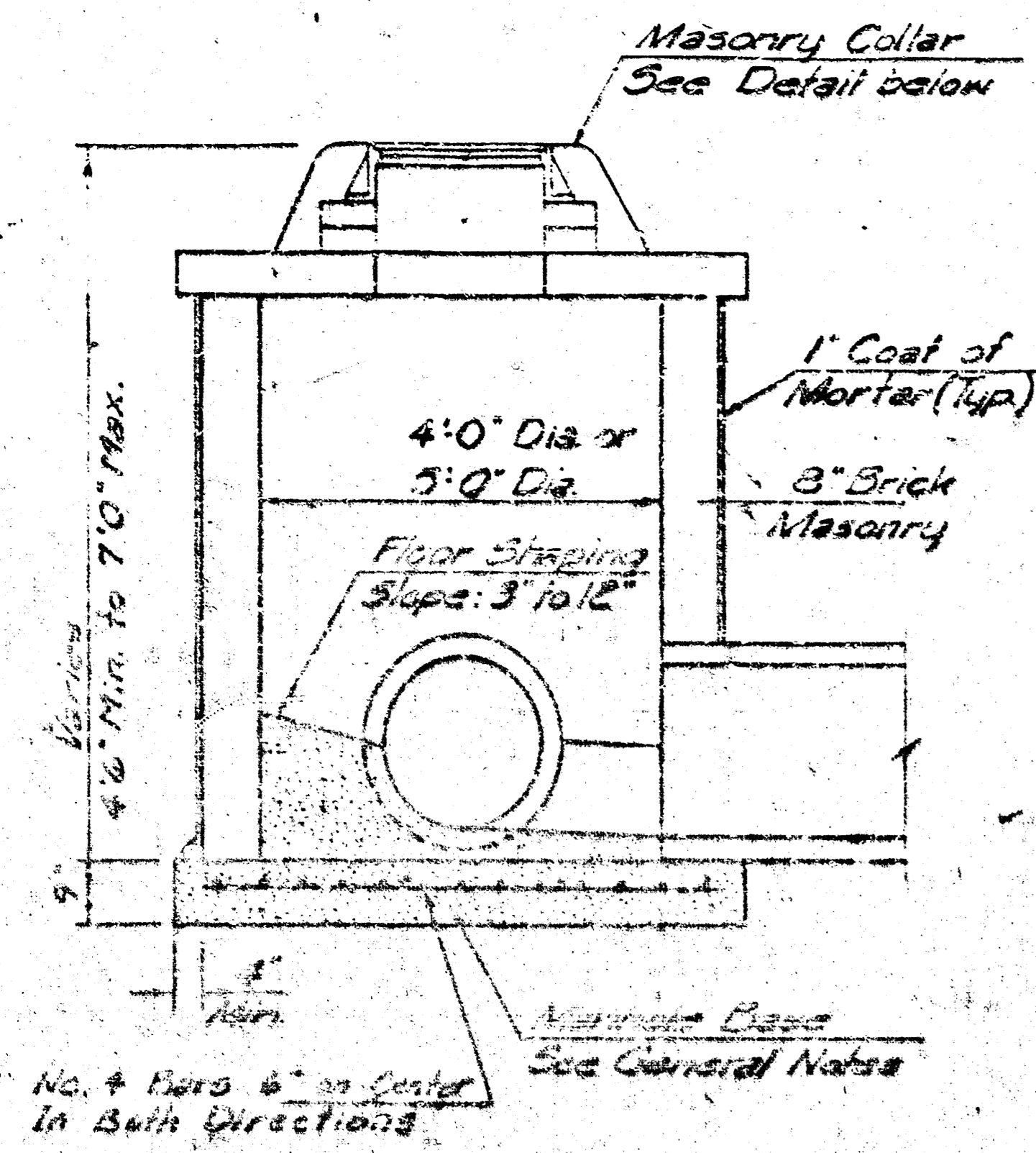


NOTE: See Sheet 6 for Valley Gutter Details and Joint Plan

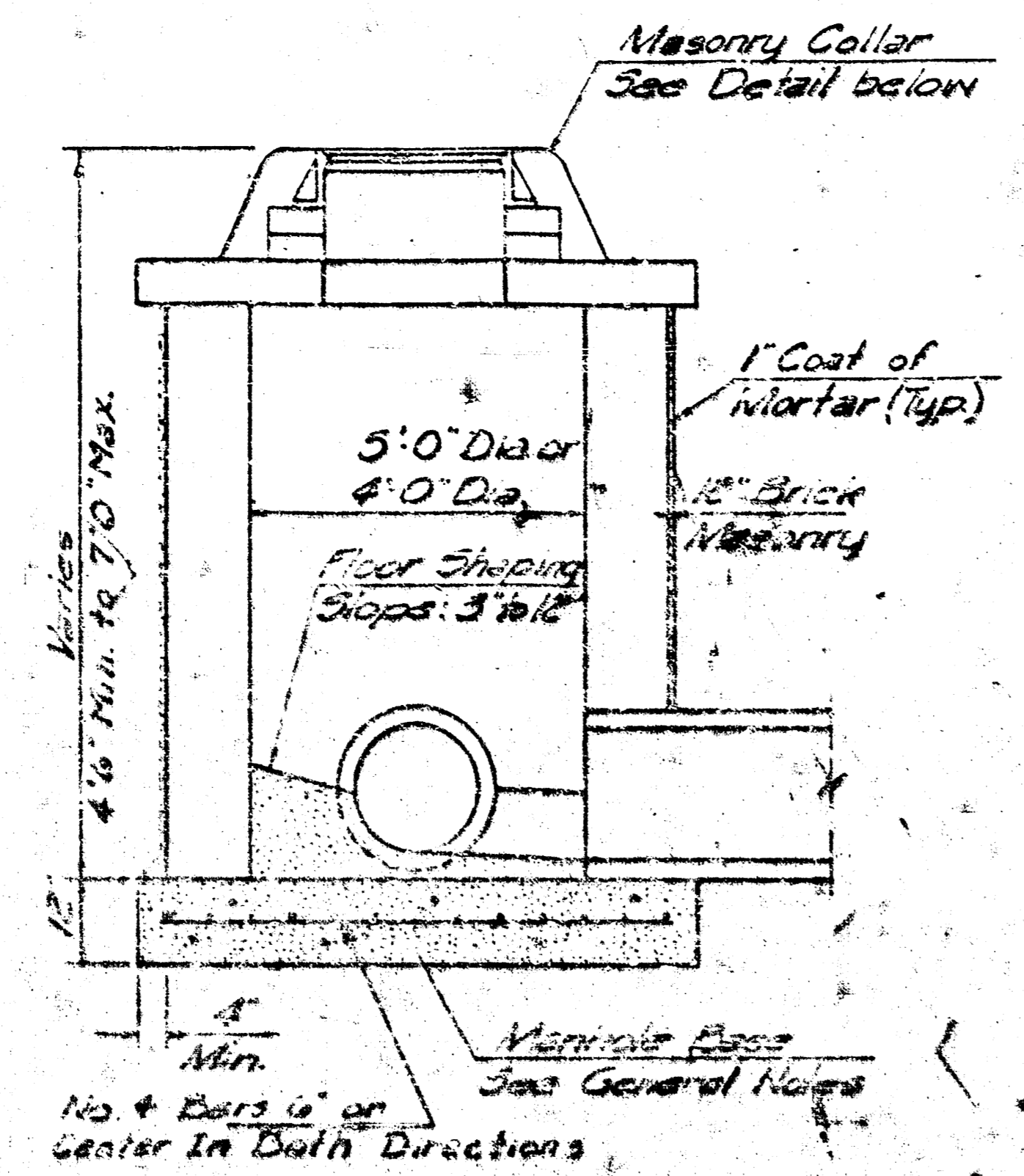
- LEGEND**
- 8" Asphaltic Concrete (6" Bituminous Base)
 - 7" Reinforced Concrete Pavement
 - 8" Valley Cutter Pavement (5" Reinforced Concrete with 3" Bituminous Base)

PAVEMENT REPLACEMENT			
BAUGHMAN COMPANY P. A. SURVEYING & ENGINEERING 316/262-7271 • 315 ELLIS • WICHITA, KANSAS 67211			REV.:
PROJECT NUMBER 163-76-245-82082-000-001			SHEET 4
DESIGN TCR	DRAWN TCR	APPROVED	DATE 9-27-90
		SCALE 1" = 20'	OF 6

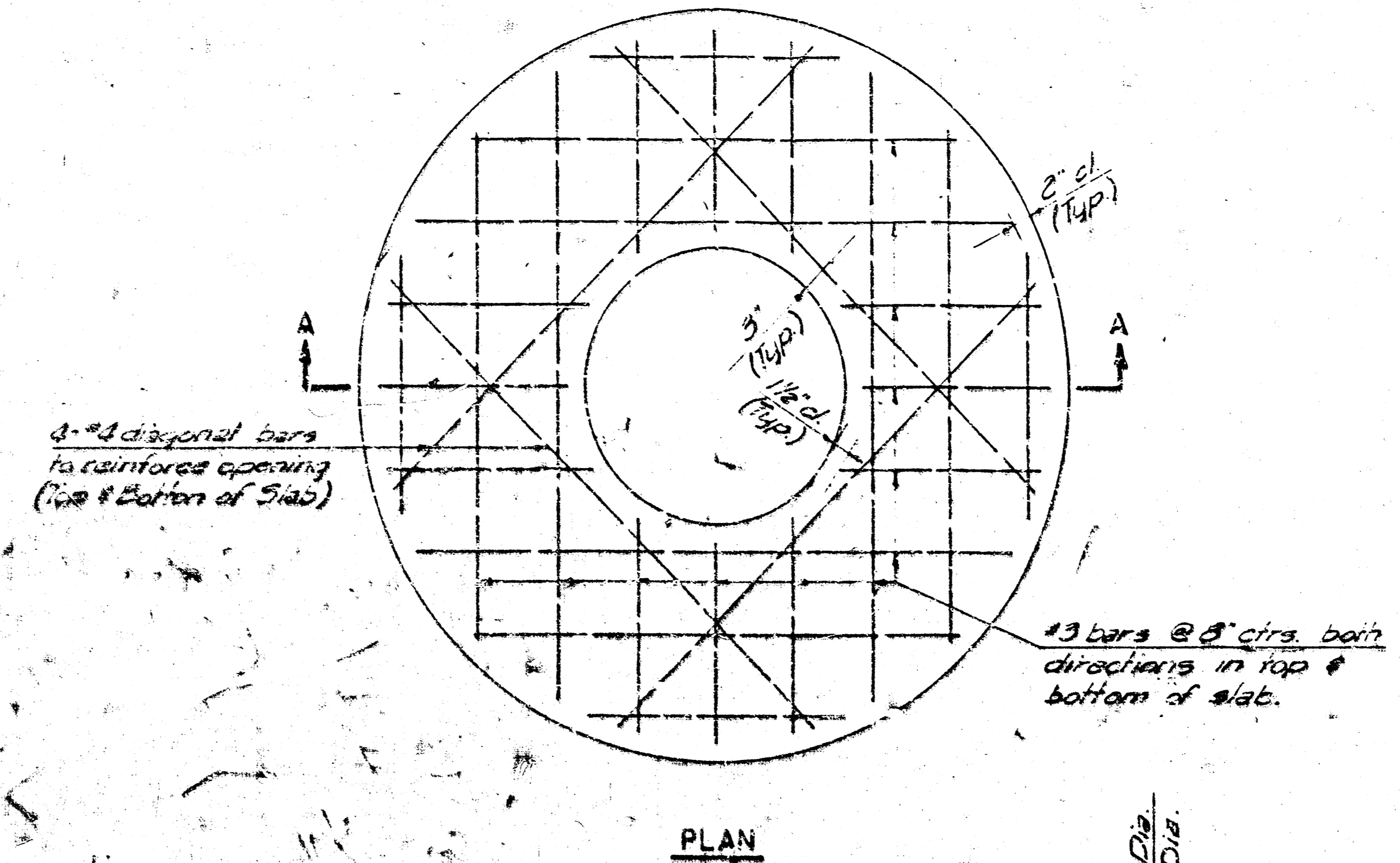
ACAD10\BURTON\EL.BURT



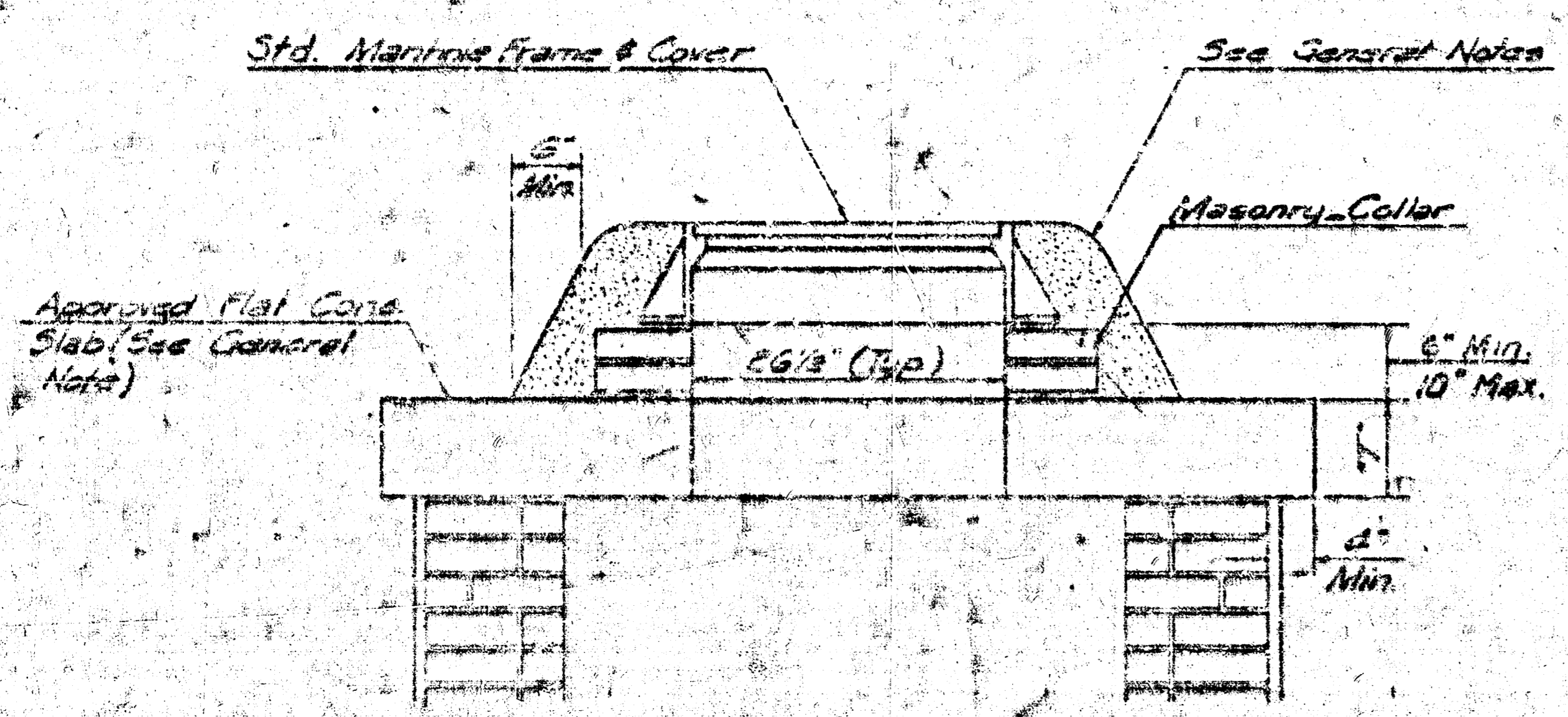
SHALLOW TYPE "A" MANHOLE



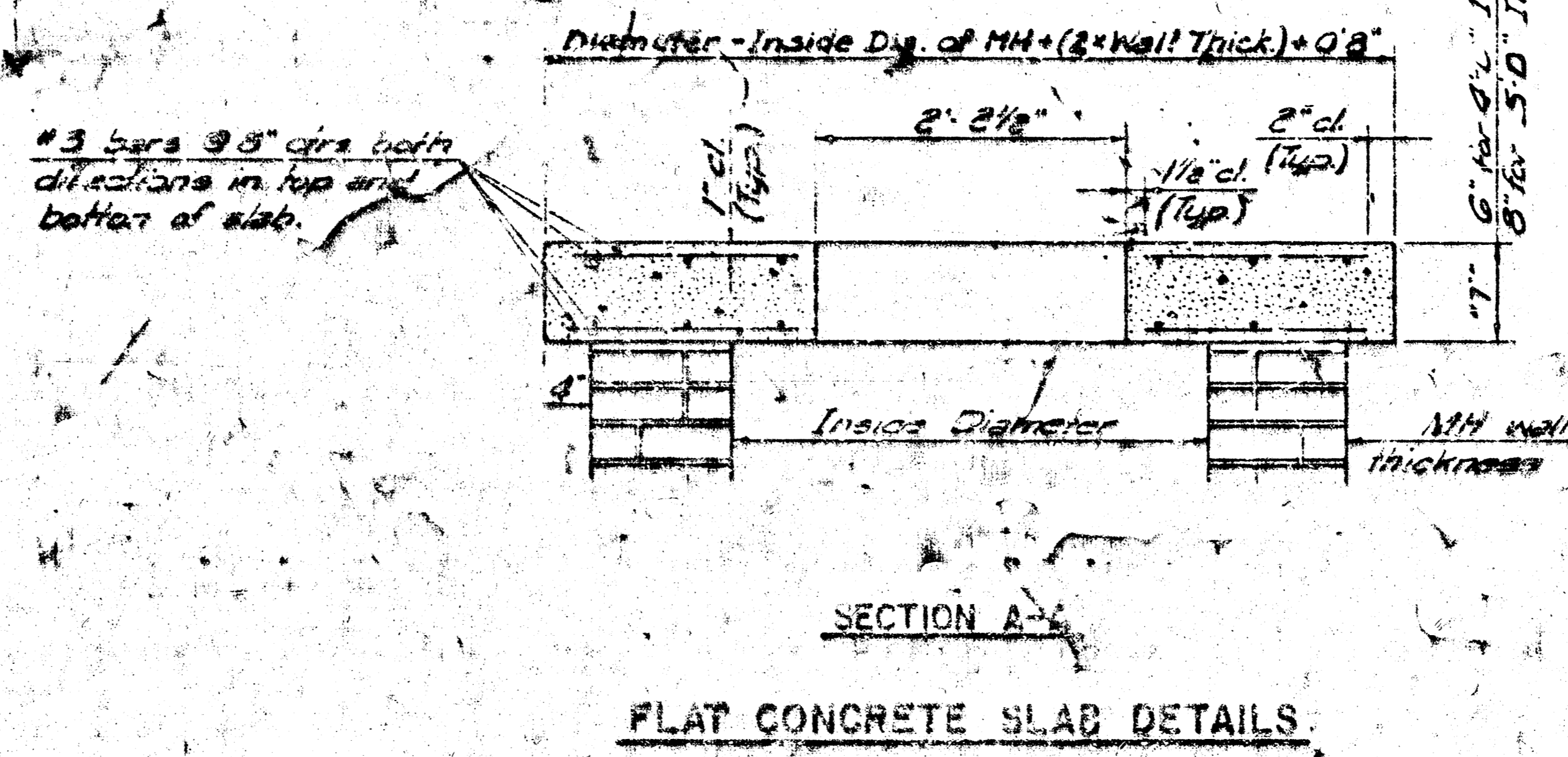
SHALLOW TYPE "B" MANHOLE



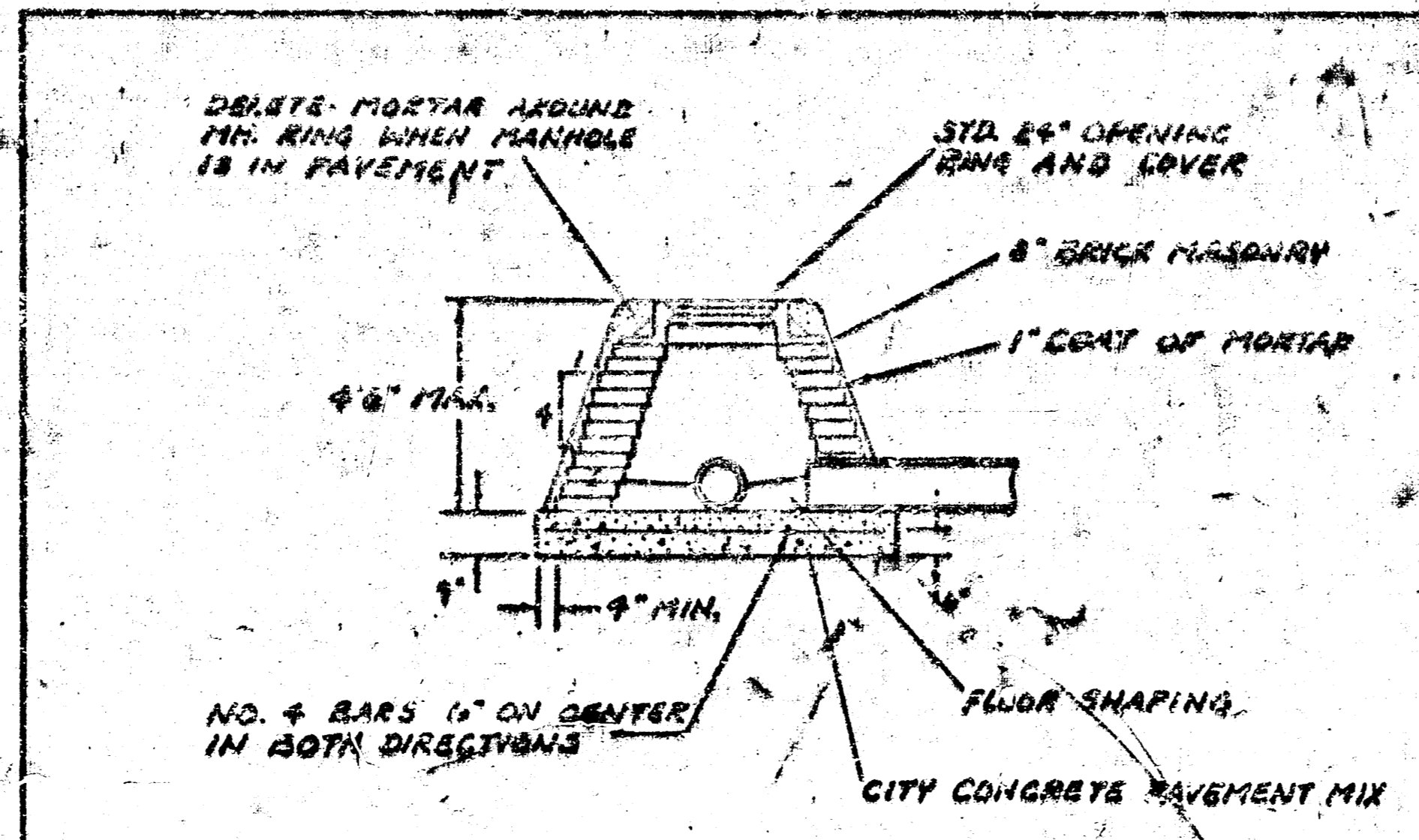
PLAN



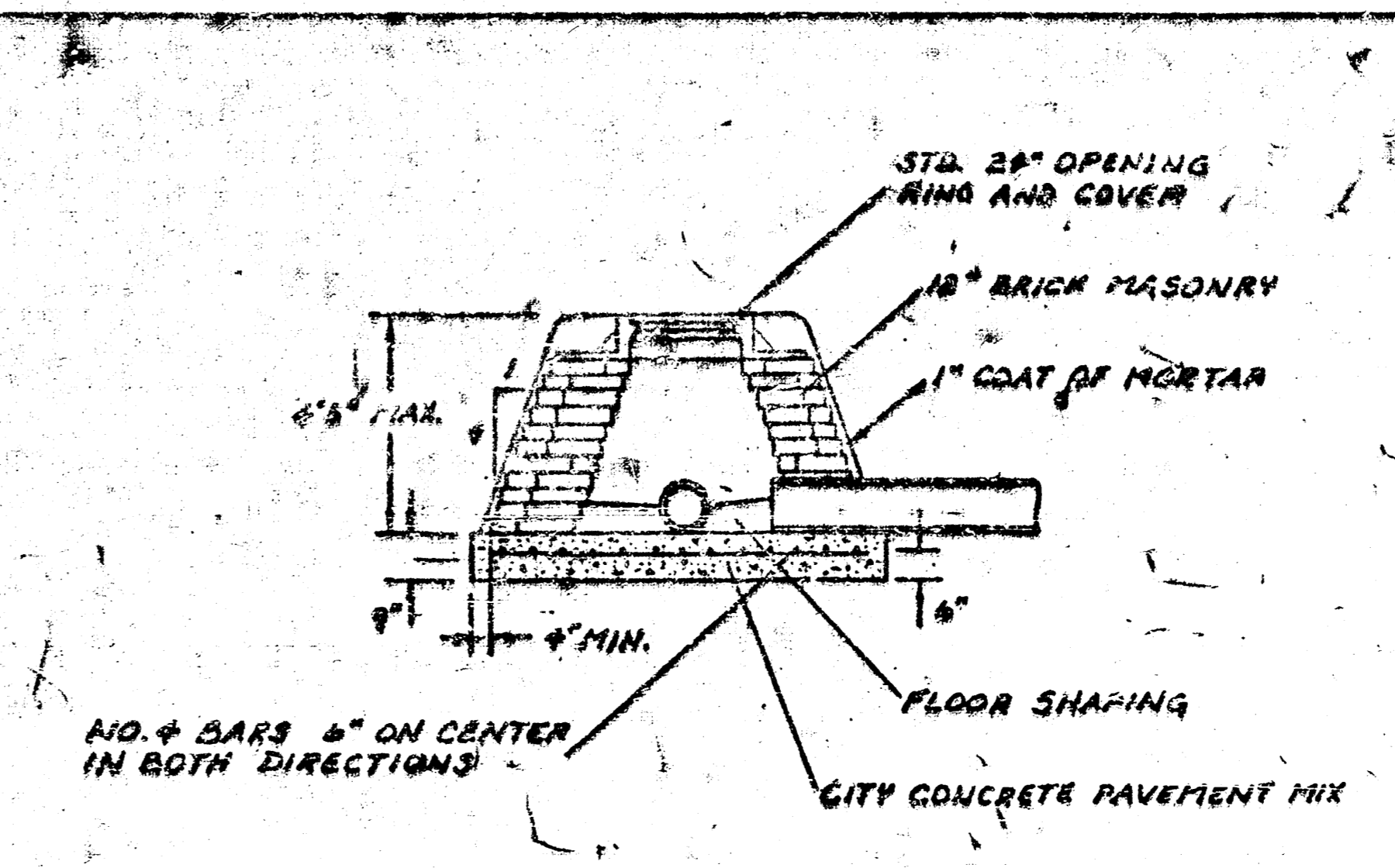
MASONRY COLLAR DETAIL



SECTION A-A
FLAT CONCRETE SLAB DETAILS



SPECIAL SHALLOW TYPE 'A' MANHOLE



SPECIAL SHALLOW TYPE 'B' MANHOLE

GENERAL NOTES

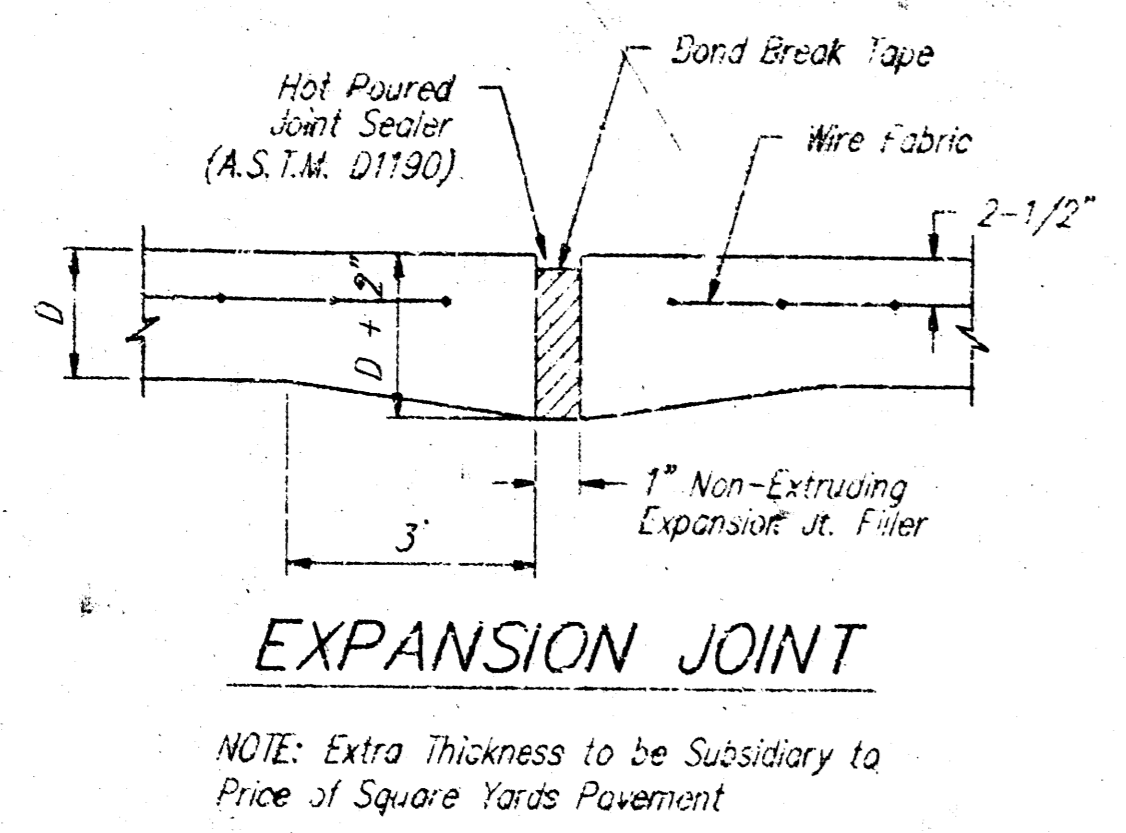
- MORTAR USED IN MASONRY CONSTRUCTION SHALL CONTAIN 8 BAGS OF CEMENT PER CUBIC YARD. CONCRETE USED IN MANHOLE BASES SHALL CONFORM TO THE REQUIREMENTS OF CONCRETE FOR CONCRETE PAVEMENT CONSTRUCTION AS SPECIFIED IN THE CITY STANDARD PAVING SPECIFICATIONS USING CITY CONCRETE CEMENT MIX WITHOUT AIR ENTRAINING ADMIXTURE. MORTAR SHALL BE PLACED AROUND THE MANHOLE RING AS SHOWN ON THE DRAWINGS WHEN MANHOLES ARE CONSTRUCTED IN UNPAVED AREAS. TYPE "A" SHALLOW MANHOLES CAN BE USED ON SEWERS WHEN THE MANHOLE IS NOT LOCATED WITHIN PUBLIC STREET PAVEMENT. MANHOLES CONSTRUCTED WHERE PIPE SIZES ARE SMALLER THAN 24" SHALL HAVE AN INSIDE DIAMETER OF 4". MANHOLES CONSTRUCTED WHERE PIPE SIZES ARE 24" OR LARGER SHALL HAVE AN INSIDE DIAMETER OF 5". COMPLETED MANHOLE SHALL BE WITHOUT LEAKS AND WATER TIGHT.
- REINFORCING STEEL SHALL BE INSTALLED IN THE MANHOLE BASES AND SHALL CONSIST OF NO. 4 BARS PLACED ON 6" CENTERS IN BOTH DIRECTIONS. THE MANHOLE BASE REINFORCEMENT SHALL BE PLACED 6" ABOVE THE BOTTOM OF THE MANHOLE BASE. ALL COSTS FOR FURNISHING AND INSTALLING REINFORCING STEEL SHALL BE INCLUDED IN THE UNIT PRICE BID FOR THE MANHOLE.
- THE FLOORS OF ALL MANHOLES SHALL BE SHAPED WITH FLOW CHANNELS SUCH THAT THE MANHOLES WILL BE SELF-CLEANING AND FREE OF AREAS WHERE SOLIDS COULD BE DEPOSITED AS SEWAGE FLOWS THROUGH THE MANHOLE FROM ALL INLET PIPES TO THE OUTLET PIPE. FLOW CHANNELS SHALL BE FORMED TO MATCH THE BOTTOM HALVES OF THE INFLOWING PIPES AND THE OUTFLOWING PIPE AS SHOWN BY THE DRAWINGS. MANHOLE FLOORS SHALL HAVE SLOPES OF 3 INCHES PER FOOT IN THE AREAS OUTSIDE OF THE FLOW CHANNELS SLOPED TOWARD THE FLOW CHANNELS. PIPES LAID THROUGH MANHOLES SHALL BE THE TOP HALF REMOVED TO MEET LINES FOR THE FULL INSIDE DIAMETER OF THE MANHOLE. MANHOLE FLOORS SHALL THEN BE SHAPED AROUND THE BOTTOM HALF OF THE PIPE WHICH FORMS THE FLOW CHANNEL.
- PIPES INSTALLED WITHIN THE EXCAVATION MADE FOR THE MANHOLE SHALL BE CRADLED WITH CONCRETE TO THE LIMITS OF THE MANHOLE EXCAVATION. WHEN CLAY PIPE IS USED, THE CRADLE SHALL EXTEND TO THE FIRST JOINT OUTSIDE THE MANHOLE. THE CRADLE SHALL BE TERMINATED AT THE CLAY PIPE JOINT IN A MANNER WHICH WILL MAINTAIN THE FLEXIBILITY OF THE JOINT. COST OF CRADLE WITHIN MANHOLE EXCAVATION OR TO CLAY PIPE JOINTS ADJACENT TO MANHOLE SHALL BE INCLUDED IN THE UNIT PRICE BID FOR THE MANHOLE.
- MANHOLE COVER CASTINGS AND MANHOLE FRAME CASTINGS SHALL CONFORM TO THE REQUIREMENTS AS INDICATED IN THE STANDARD SPECIFICATIONS AND AS SHOWN IN THE STANDARD DETAIL DRAWINGS.
- THE CROWNS OF INFLOWING PIPES SHALL NEVER BE SET LOWER THAN THE CROWN OF THE OUTFLOWING PIPE.
- STANDARD SHALLOW MANHOLES TYPE "A" AND "B" SHALL BE PAID FOR AT THE UNIT PRICE BID PER EACH FOR THE TYPE AND DIAMETER INDICATED. STANDARD SPECIAL SHALLOW MANHOLES TYPE "A" AND "B" SHALL BE PAID FOR AT THE UNIT PRICE BID PER EACH FOR THE TYPE INDICATED. ALL STANDARD SHALLOW MANHOLE DIAMETERS WILL BE 4' UNLESS INDICATED OTHERWISE.

CITY OF WICHITA, KANSAS
STANDARD SHALLOW MANHOLES
TYPE 'A' AND TYPE 'B'

5
6

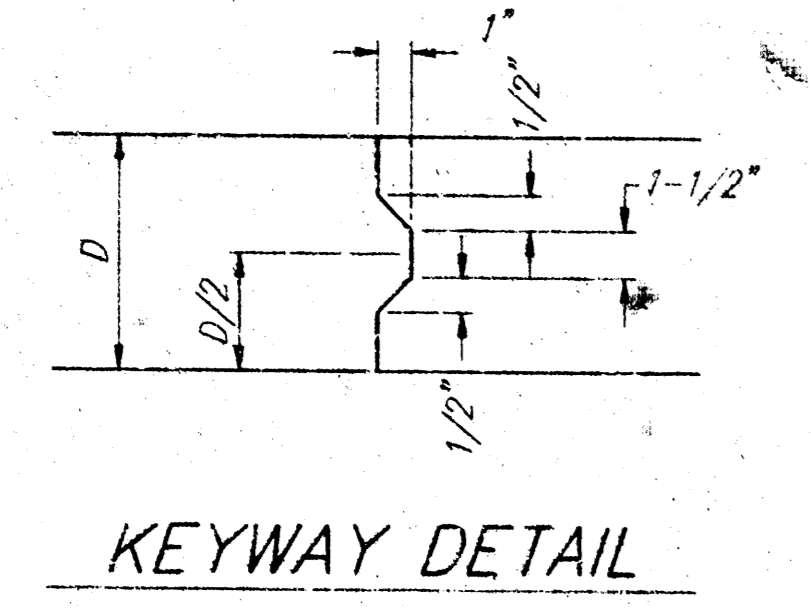
480-76-245-92082-000-000-001

Designed by	Checked by
Drawn by	Date
	Job No.

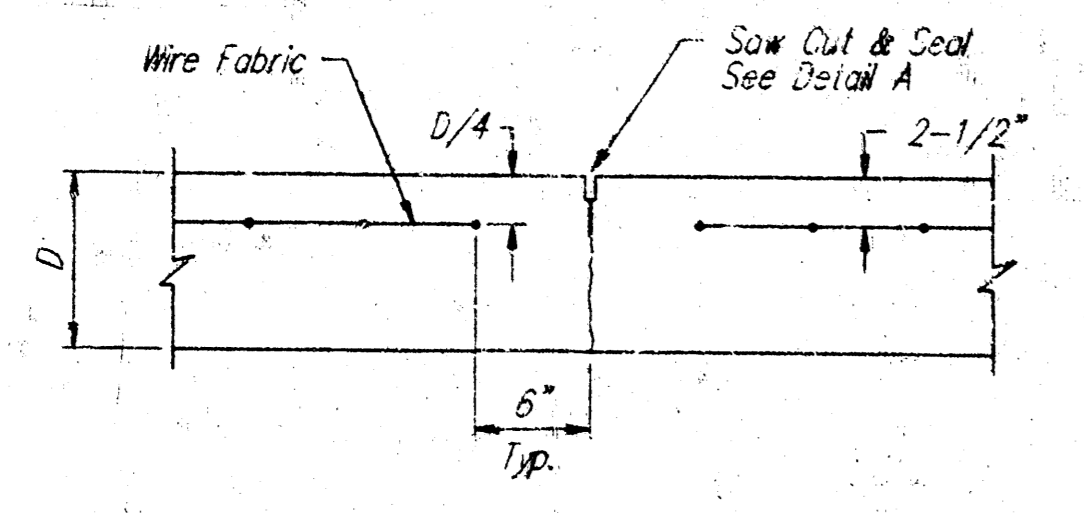


EXPANSION JOINT

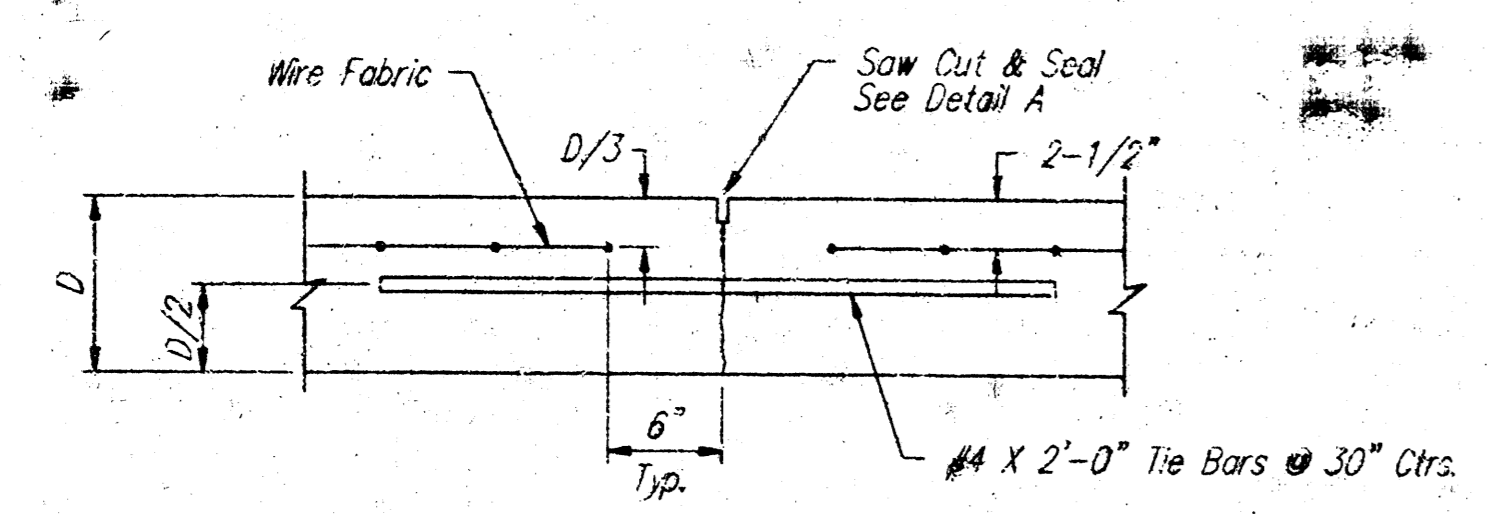
NOTE: Extra Thickness to be Subsidiary to Price of Square Yards Pavement



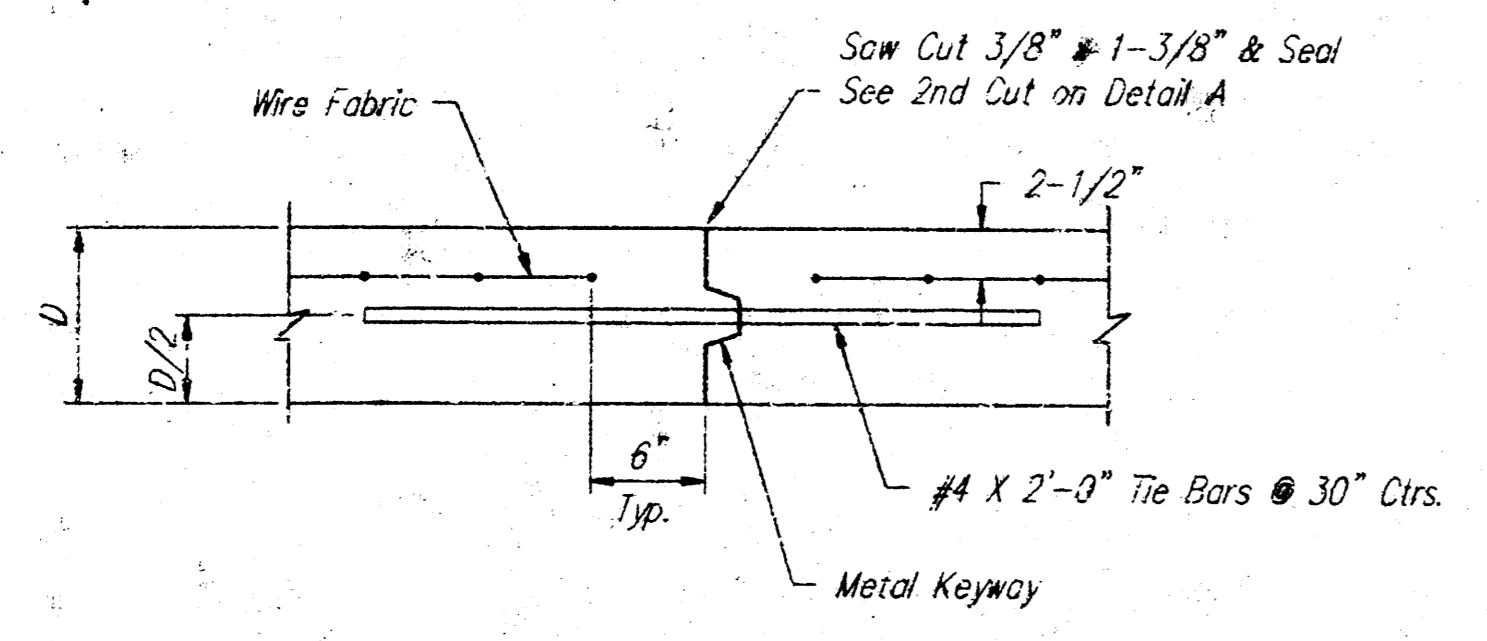
KEYWAY DETAIL



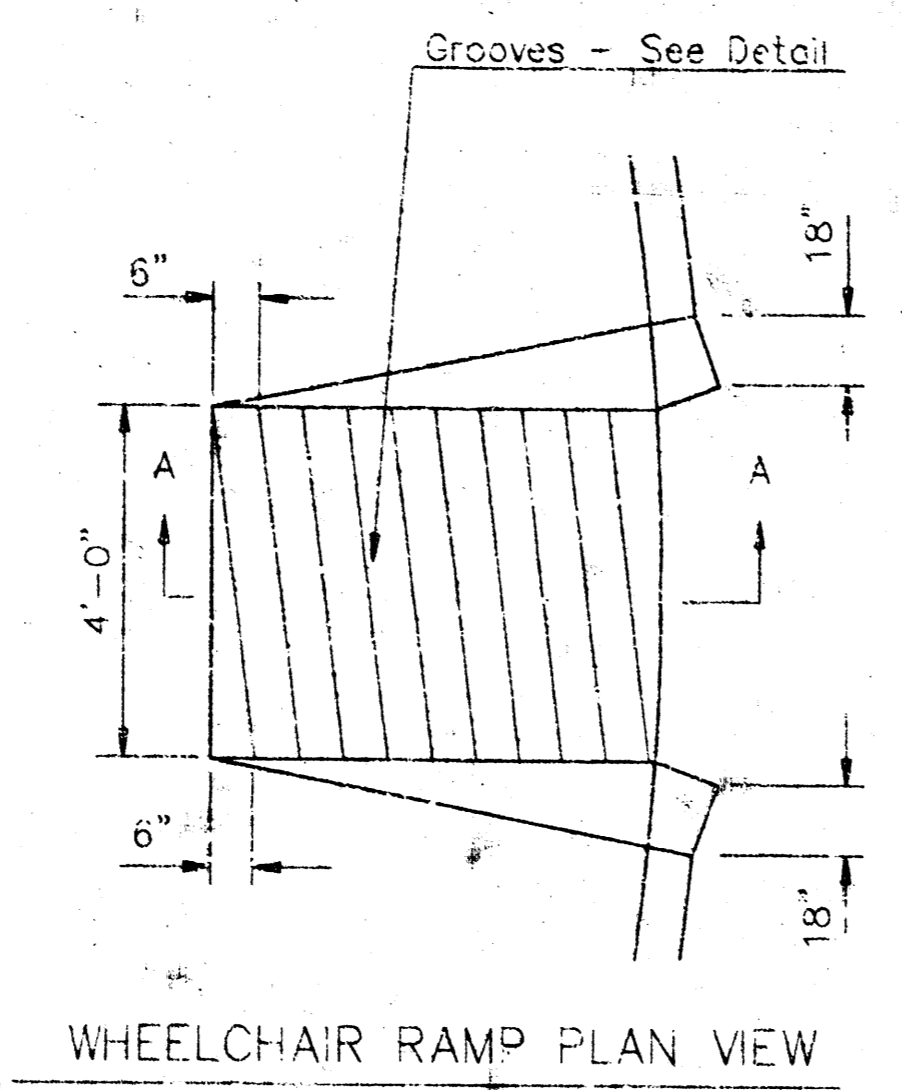
CONTRACTION JOINT DETAIL (C.J.)



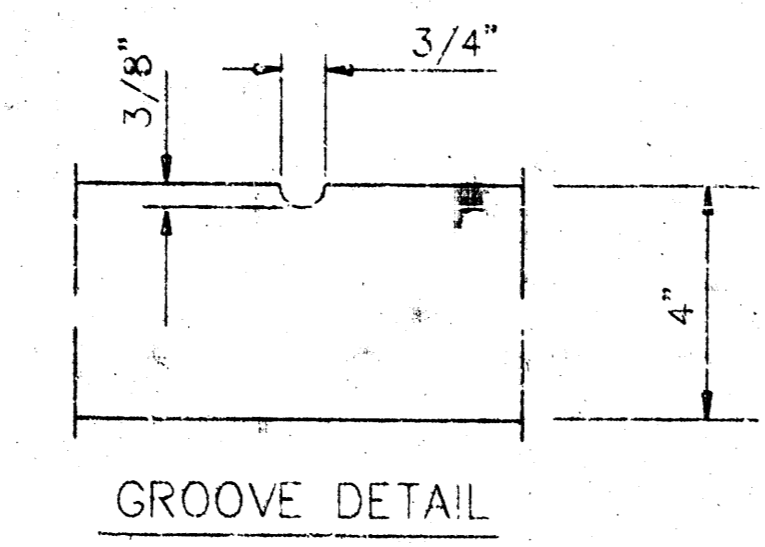
LONGITUDINAL JOINT DETAIL (L.J.)



LONGITUDINAL JOINT DETAIL (L.J.)

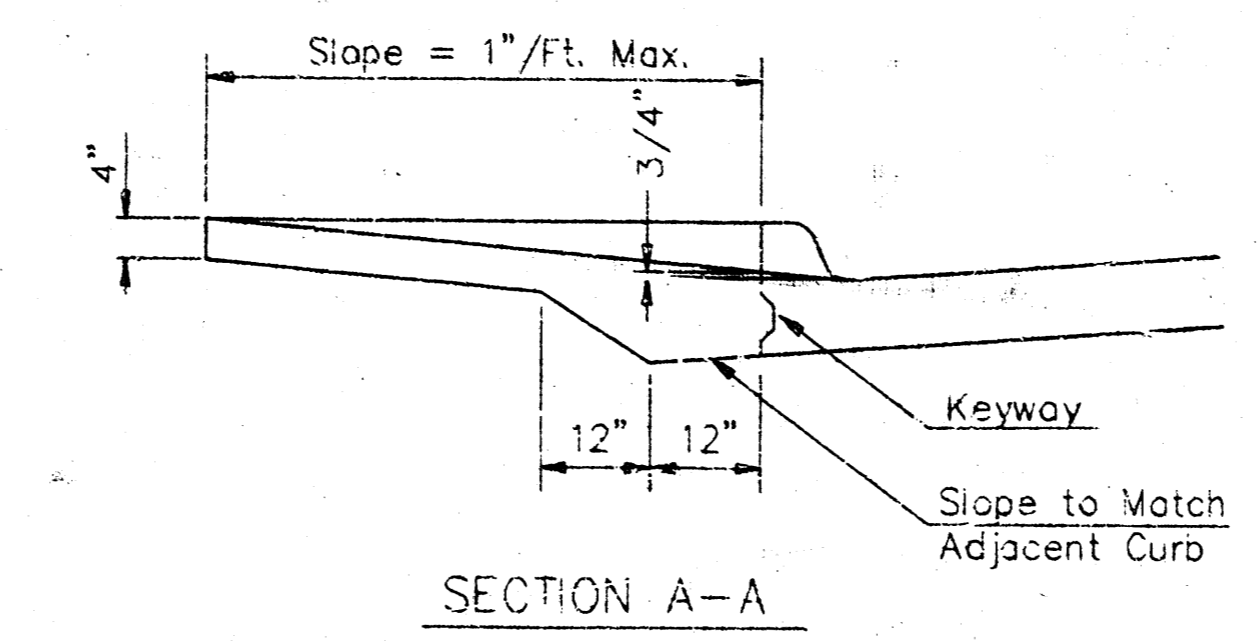


WHEELCHAIR RAMP PLAN VIEW

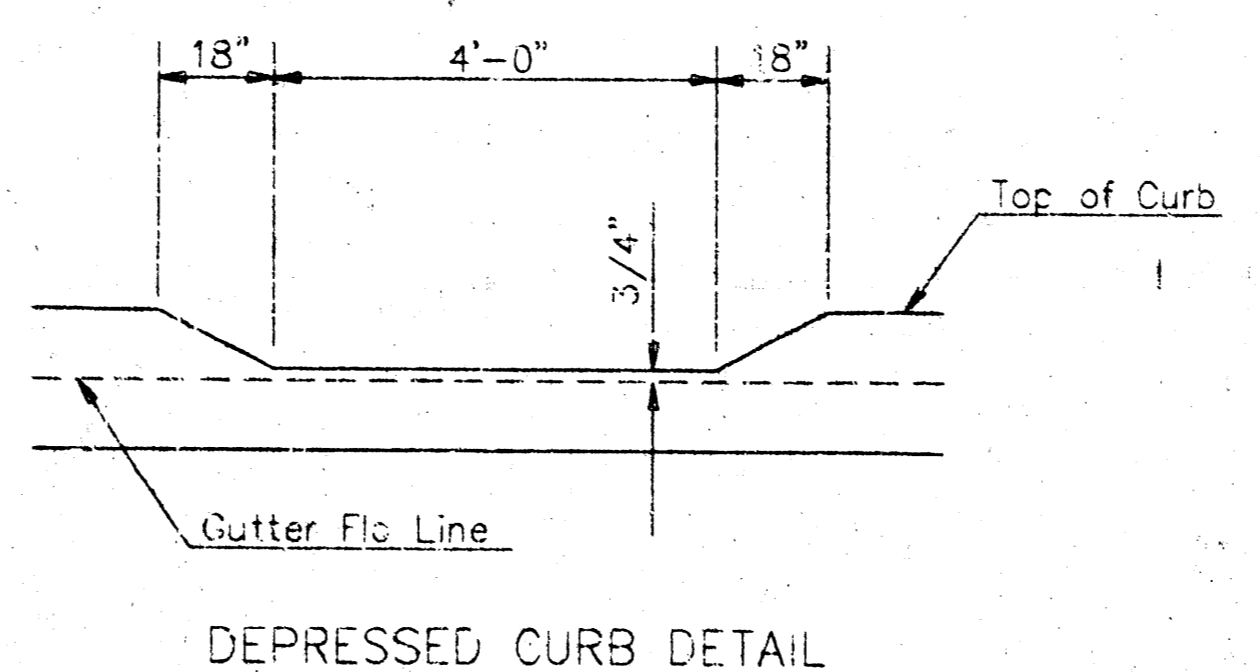


GROOVE DETAIL

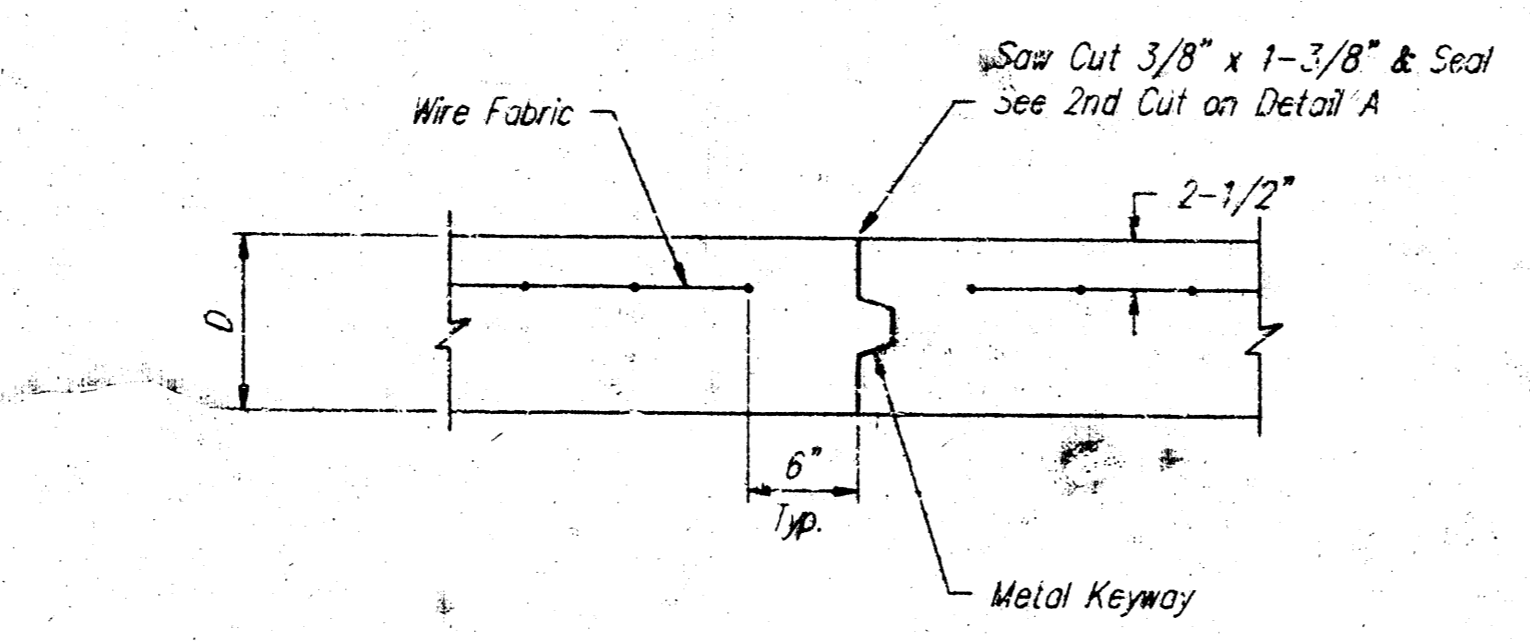
WHEELCHAIR RAMP DETAIL



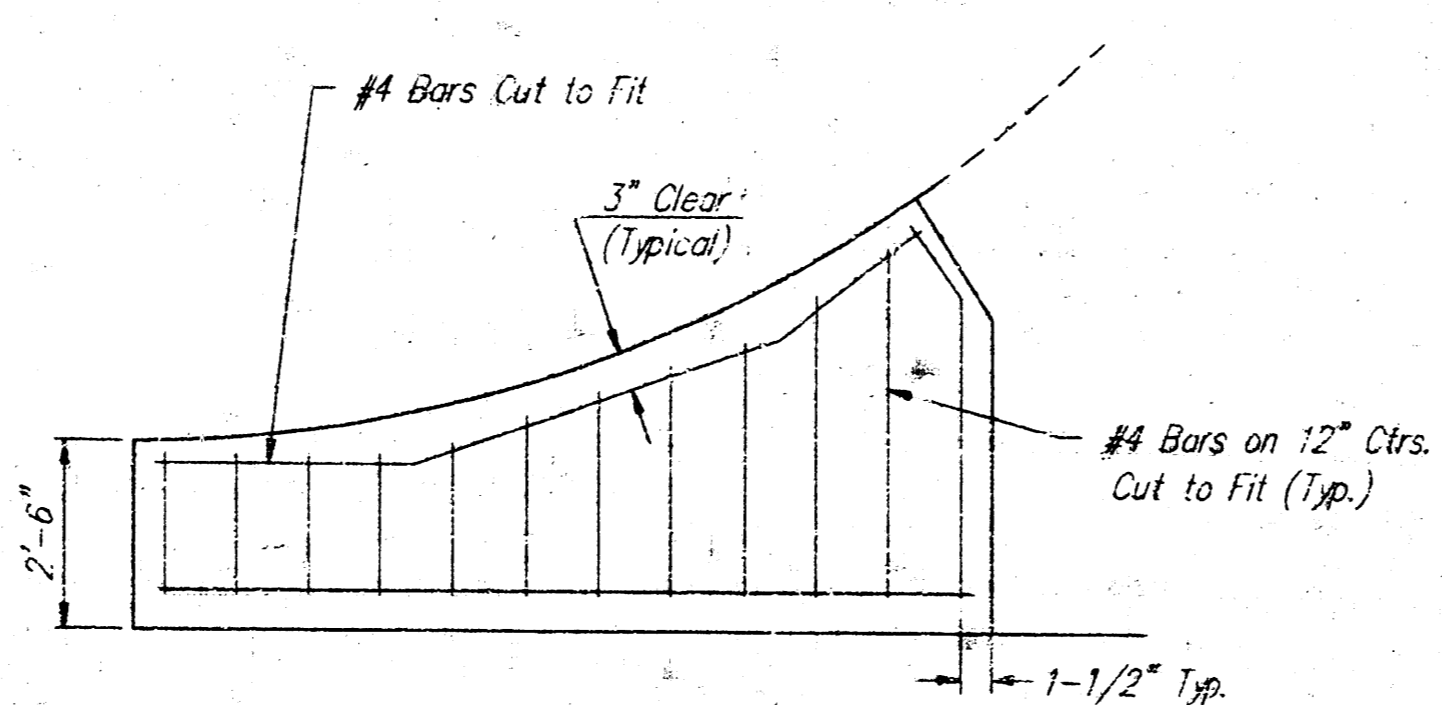
SECTION A-A



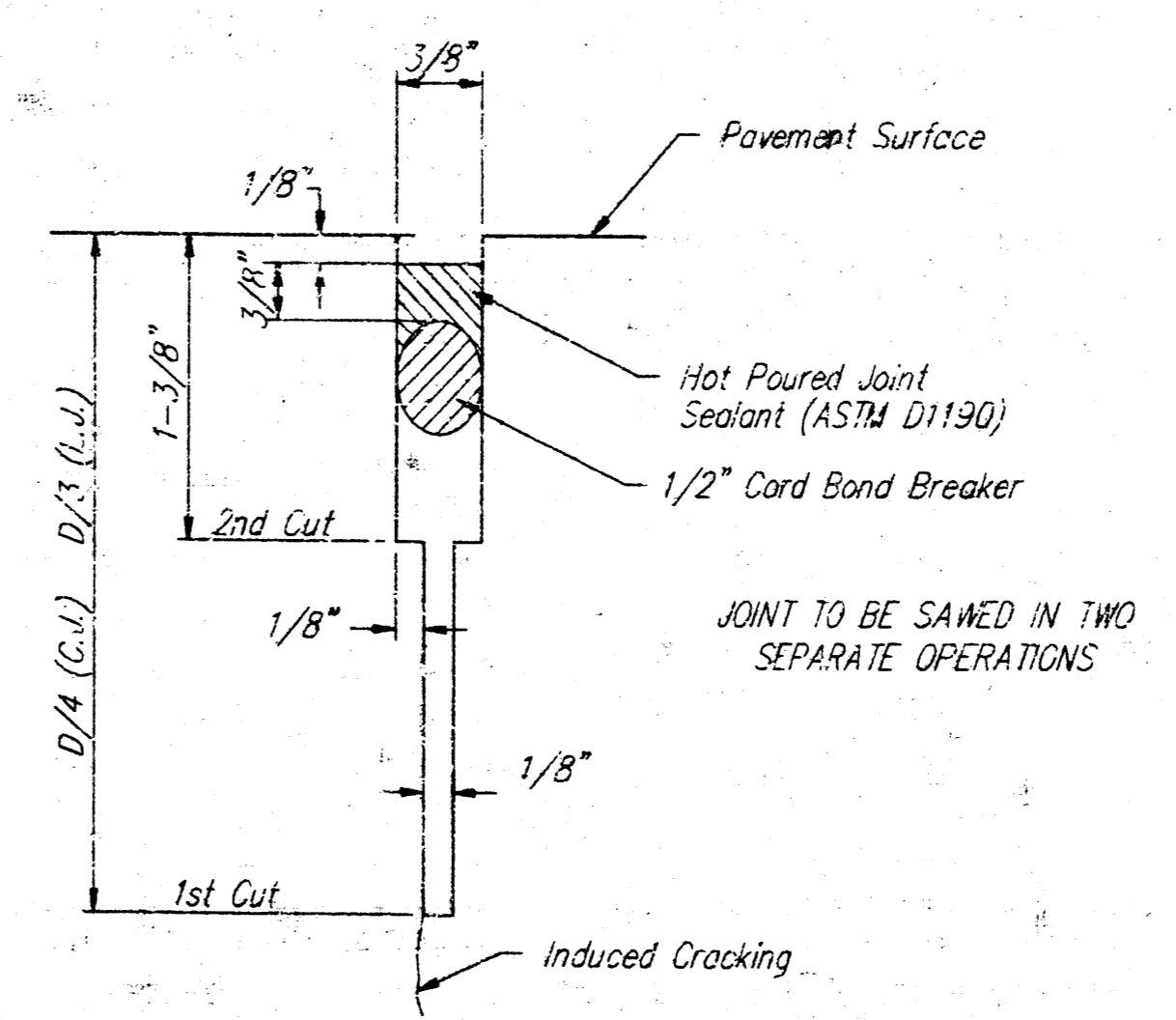
DEPRESSED CURB DETAIL



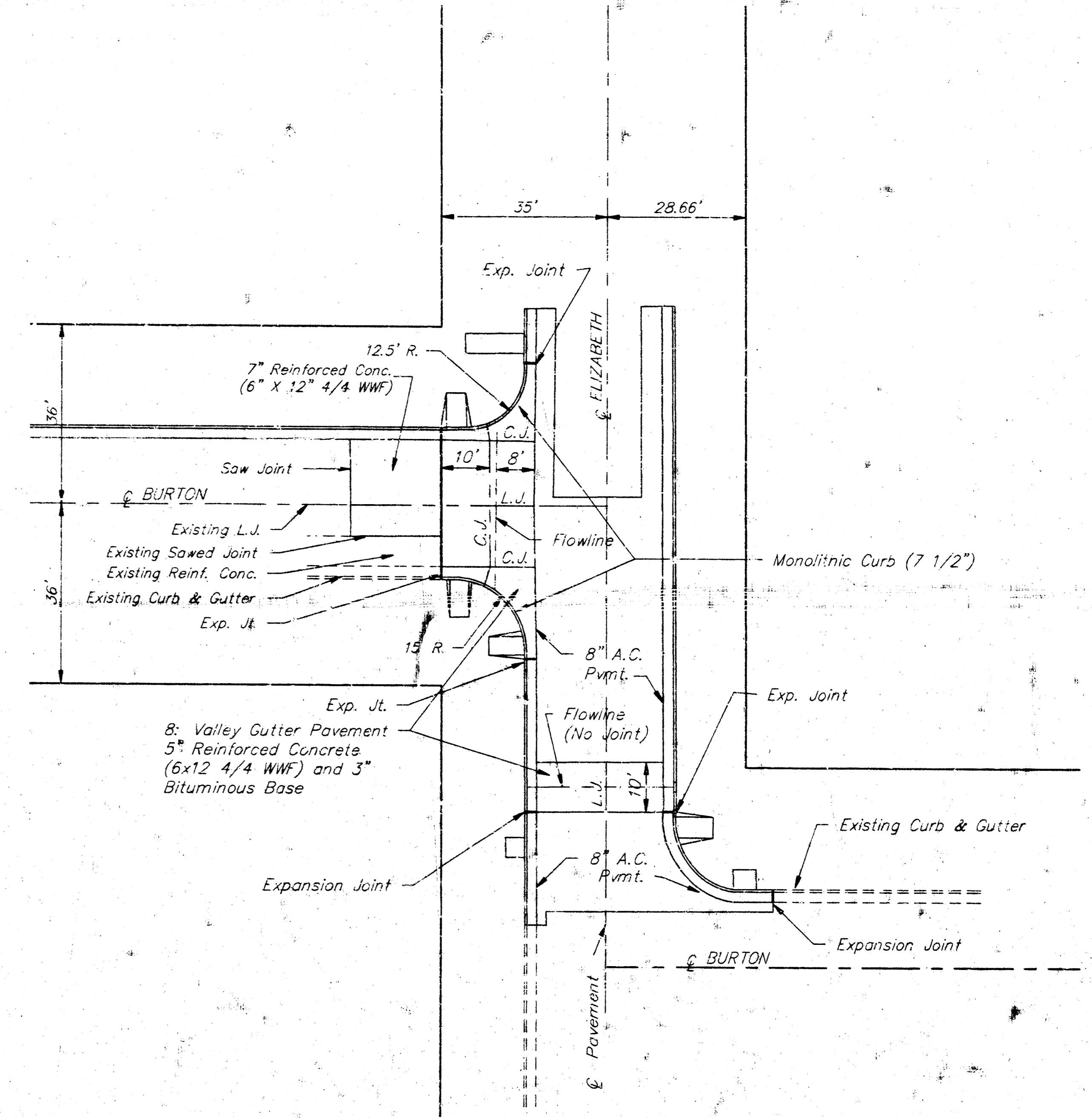
OPTIONAL CONTRACTION CONST. JOINT (C.J.) (ALTERNATE C.J.)



WING REINFORCING DETAIL



SAW JOINT DETAIL



VALLEY GUTTER JOINT PLAN
1" = 20'

VALLEY GUTTER DETAILS					
BAUGHMAN COMPANY, P. A. SURVEYING & ENGINEERING <small>316/262-7271 • 315 ELLIS • WICHITA, KANSAS 67211</small>					
10 <small>488-76 85-82082-00-000-00</small>		10 <small>PROJECT NUMBER</small>		SHEET 6 <small>OF 6</small>	
DESIGN:	DRAWN:	APPROVED:	DATE:	SCALE:	REV:
CMB/TCR	CMB/JL		10-4-90	1" = 20"	

BURTON\WDETAL